

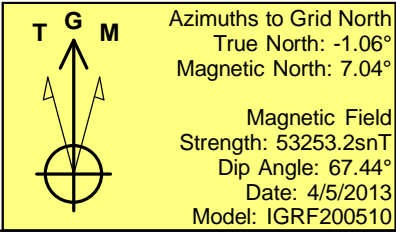
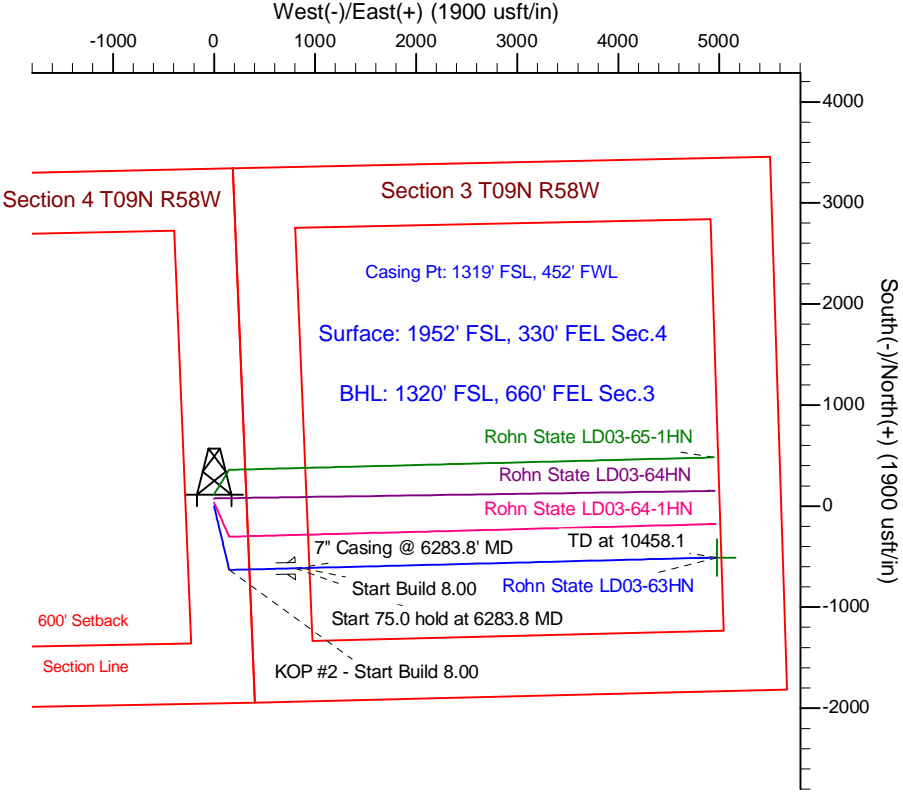
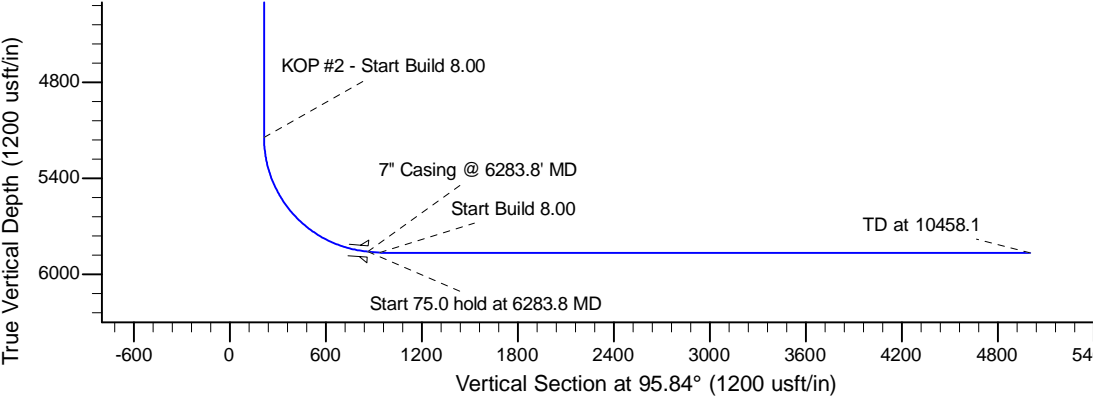
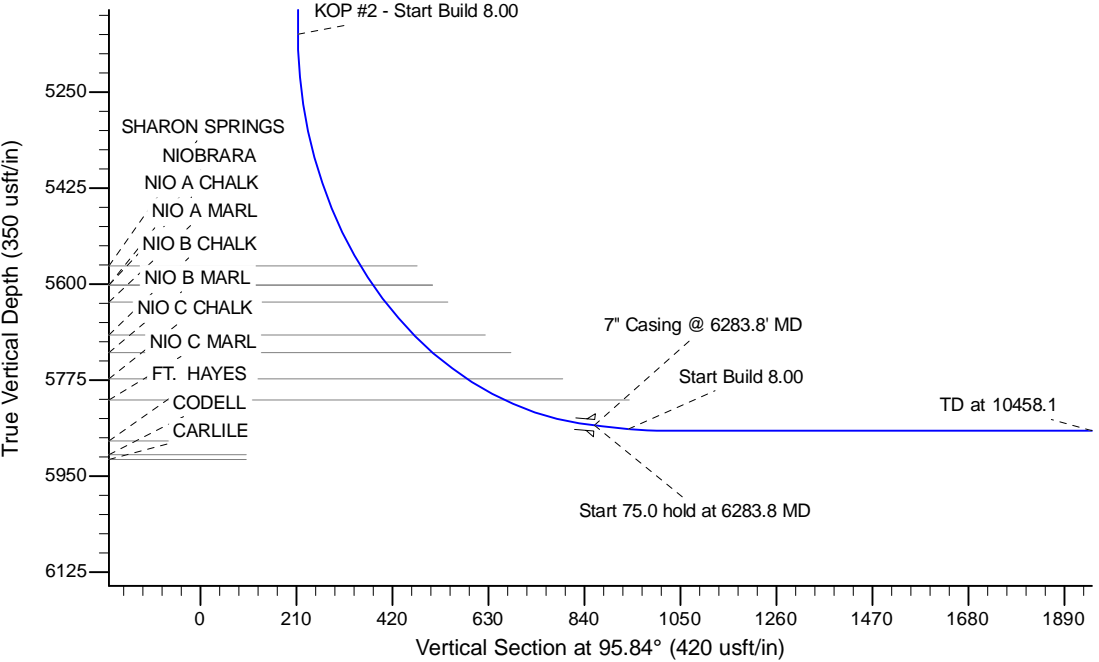
Project: Wattenberg Field  
Site: LD (Sec.4-T09N-R58W) Weld County, CO  
Well: Rohn State LD03-63HN  
Wellbore: Original Drilling  
Design: APD - Rev 0

# Northern Region Drilling

Geodetic System: US State Plane 1983  
Datum: North American Datum 1983  
Ellipsoid: GRS 1980  
Zone: Colorado Northern Zone  
System Datum: Mean Sea Level

## SECTION DETAILS

Sec	MD	Inc	Azi	TVD	+N/-S	+E/-W	Dleg	TFace	VSec	Target
1	0.0	0.00	0.00	0.0	0.0	0.0	0.00	0.00	0.0	
2	1200.0	0.00	0.00	1200.0	0.0	0.0	0.00	0.00	0.0	
3	1951.5	15.03	166.65	1942.9	-95.3	22.6	2.00	166.65	32.2	
4	3700.5	15.03	166.65	3632.1	-536.7	127.4	0.00	0.00	181.3	
5	4452.0	0.00	0.00	4375.0	-632.0	150.0	2.00	180.00	213.5	
6	5221.3	0.00	0.00	5144.3	-632.0	150.0	0.00	0.00	213.5	
7	6283.8	85.00	88.54	5857.7	-615.3	803.6	8.00	88.54	862.0	
8	6358.8	85.00	88.54	5864.3	-613.4	878.3	0.00	0.00	936.1	
9	6421.3	90.00	88.54	5867.0	-611.8	940.7	8.00	0.00	998.0	
10	10458.1	90.00	88.54	5867.0	-508.8	4976.2	0.00	0.00	5002.1	Rohn State LD03-63HN BHL 1320'FSL, 660'FEL



WELL DETAILS: Rohn State LD03-63HN				
Ground Level: 4705.0				
0.0	0.0	Northing	Easting	Latitude
		1530650.26	3453806.93	40.778510
				Longitude
				-103.861350
Plan: APD - Rev 0 (Rohn State LD03-63HN/Original Drilling)				
Created By: Shailey Jewell		Date: 11:05, April 10 2013		
Checked: _____		Date: _____		
Reviewed: _____		Date: _____		
Approved: _____		Date: _____		