

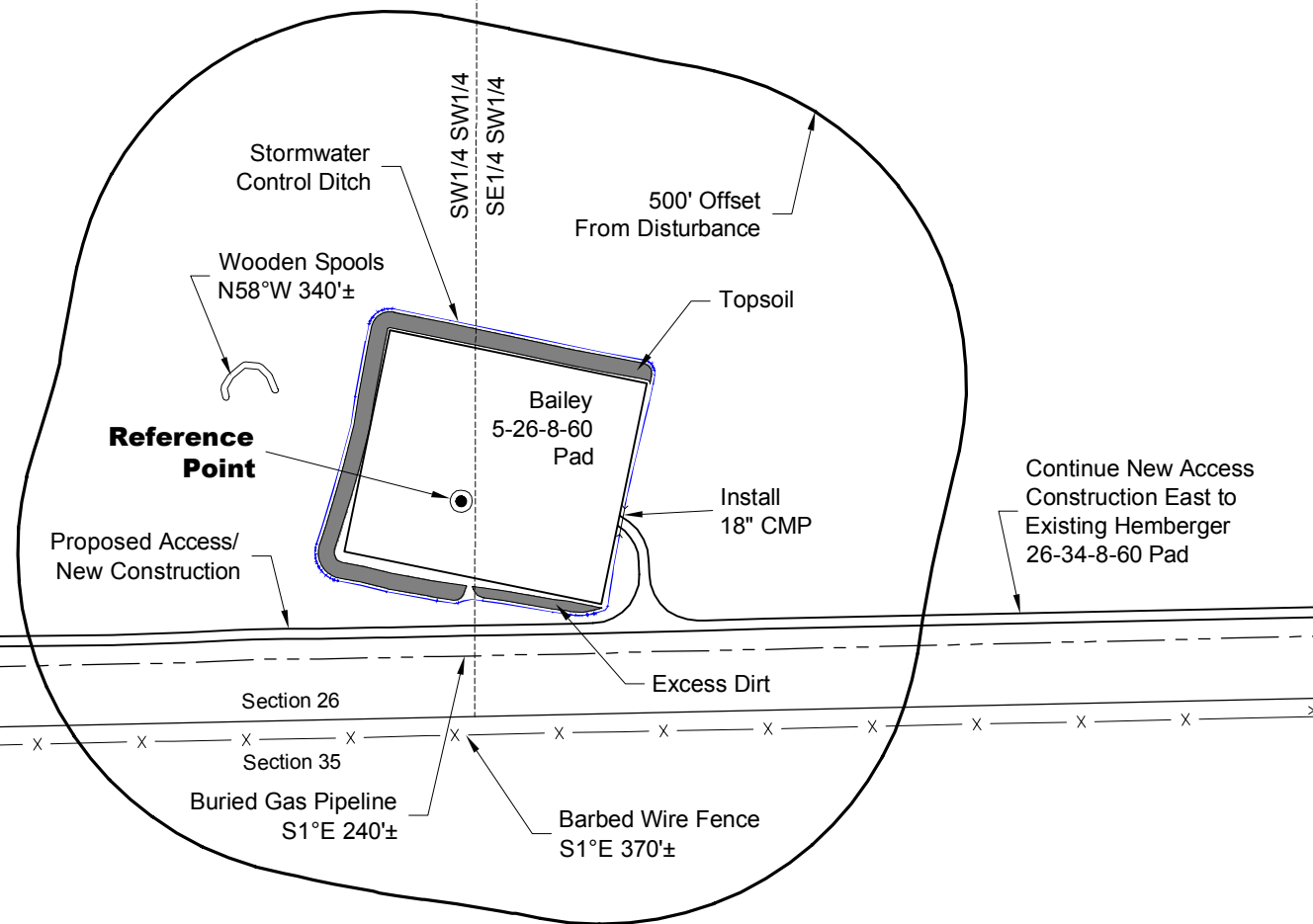
LOCATION DRAWING

VEGETATION:
GRASSLAND PASTURE

SURFACE USE:
GRAZING

REFERENCE POINT

LATITUDE: 40.62703
LONGITUDE: -104.06380
FOOTAGE: 340 FSL 1304 FWL
GROUND ELEVATION: 4875.6
PDOP: 2.2 DATE: 2/28/2013
INSTRUMENT OPERATOR: MARC WOODARD



NOTE-DISTANCE TO NEAREST:

Property Line - S 340'
Public Road - WCR 105 - E 1290'±
Building - S 10° W 1.6 Miles ±
Railroad - UPRR S 5° E 26 Miles ±
Powerline - W 1330'±

NOTE:

ALL PRODUCTION FACILITIES WILL BE ON PAD.

DISTURBANCE ACREAGE:
4.8± DRILLING OPERATIONS

4/19/13



North

0 300 600

Graphic Scale in Feet
1" = 300'



LAND SURVEYING AND MAPPING
LAFAYETTE - WINTER PARK
Ph 303 666 0379 Fx 303 665 6320

CARRIZO NIOBRARA LLC
BAILEY 5-26-8-60 PAD

SW1/4 SW1/4 SECTION 26 T8N R60W
6th PM WELD COUNTY COLORADO