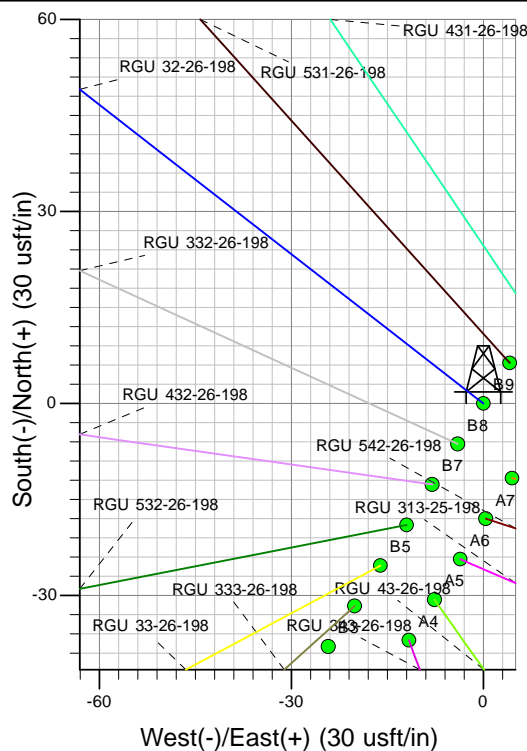
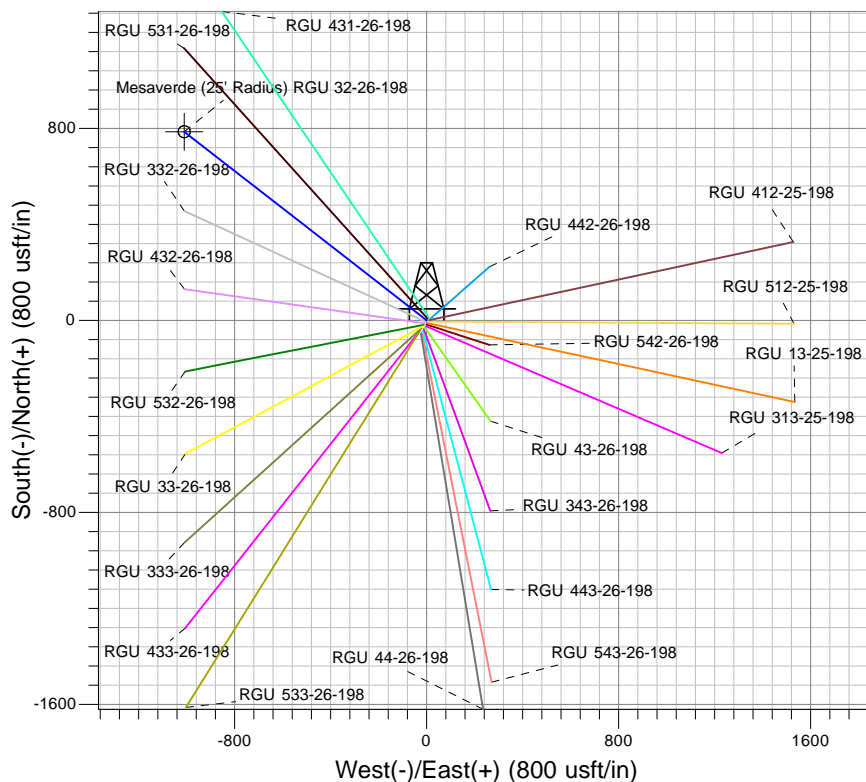
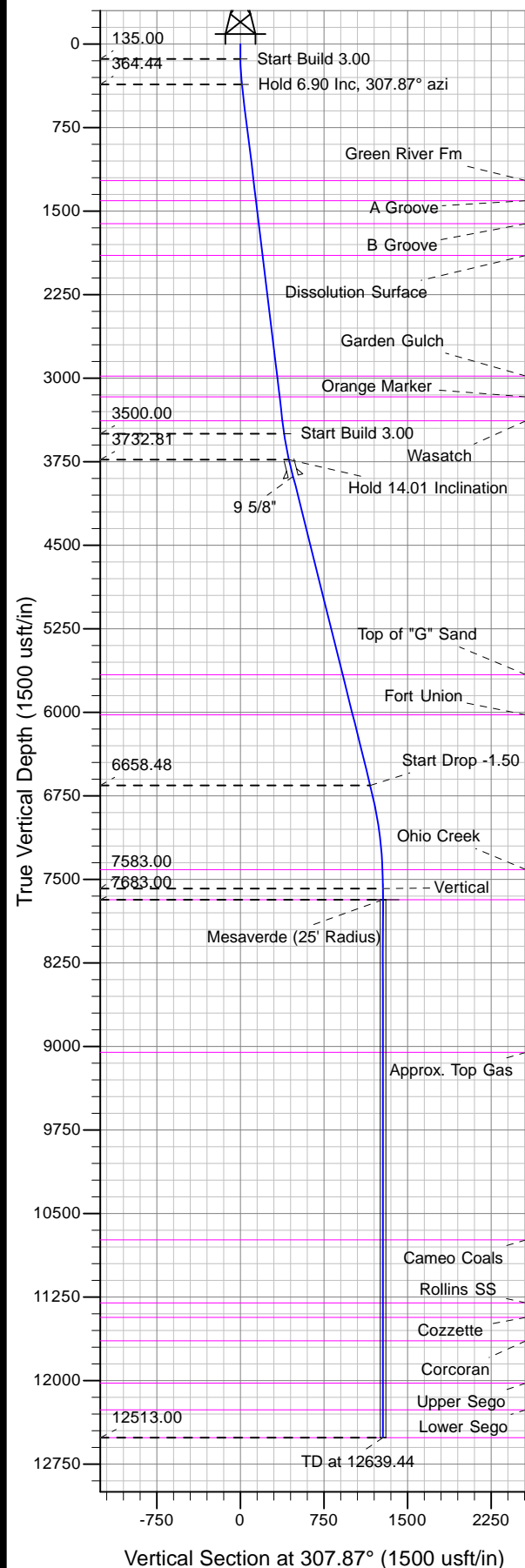




Well Name: RGU 32-26-198
Surface Location: RGU 42-26-198
North American Datum 1983 , US State Plane 1983 , Colorado Central Zone
Ground Elevation: 6622.00
+N/-S 0.00 +E/-W 0.00 Northing 1778109.50 Easting 2199607.20 Latitude 39.93520 Longitude -108.35454 Slot B9
KELLY BUSHING @ 6643.00usft (Cyclone 29 (21' RKB) kjs)



Project: RG 26-01S-098W
Site: RGU 42-26-198
Well: RGU 32-26-198
Design #1 24Jan13 kjs



Azimuths to True North
Magnetic North: 10.36°
Magnetic Field
Strength: 52273.7nT
Dip Angle: 65.99°
Date: 1/24/2013
Model: IGRF2010

ANNOTATIONS

MD	Inc	Azi	TVD	+N/-S	+E/-W	Vsect	Departure	Annotation
135.00	0.00	0.00	135.00	0.00	0.00	0.00	0.00	Start Build 3.00
365.00	6.90	307.87	364.44	8.49	-10.92	13.83	13.83	Hold 6.90 Inc, 307.87° azi
3523.43	6.90	307.87	3500.00	241.42	-310.45	393.28	393.28	Start Build 3.00
3760.33	14.01	307.87	3732.81	267.79	-344.36	436.23	436.23	Hold 14.01 Inclination
6775.65	14.01	307.87	6658.48	715.84	-920.46	1166.05	1166.05	Start Drop -1.50
7709.44	0.00	0.00	7583.00	785.56	-1010.12	1279.62	1279.62	Vertical
7809.44	0.00	0.00	7683.00	785.56	-1010.12	1279.62	1279.62	Mesaverde
12639.44	0.00	0.00	12513.00	785.56	-1010.12	1279.62	1279.62	TD at 12639.44