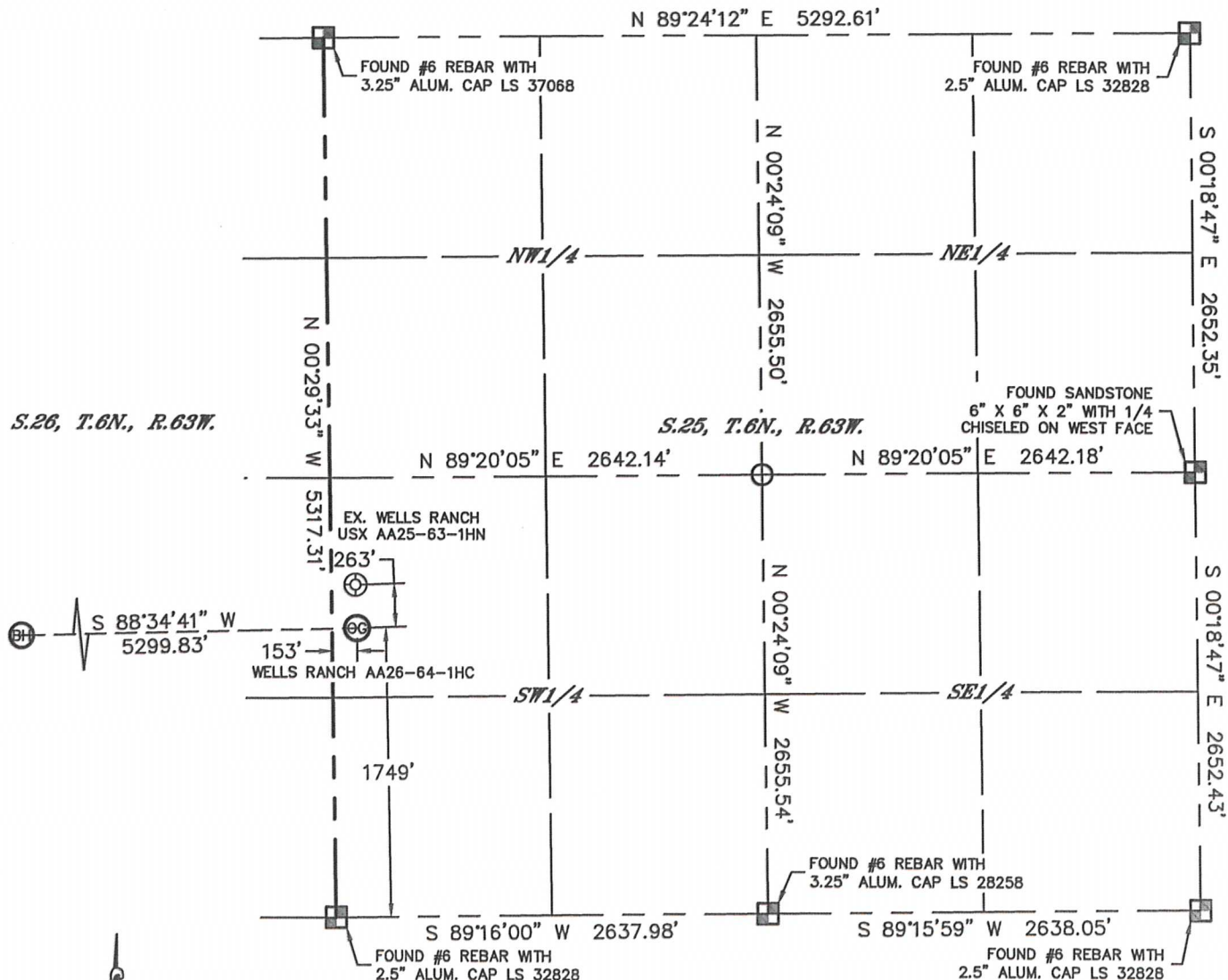


WELL LOCATION CERTIFICATE

THIS MAP DOES NOT REPRESENT A BOUNDARY SURVEY

SECTION: 25
TOWNSHIP: 6N
RANGE: 63W



In accordance with a request from Matt Verbit with Noble Energy Inc., Lat40°, Inc. has determined the surface location of the WELLS RANCH AA26-64-1HC to be 1749' from the SOUTH line and 153' from the WEST line as measured at right angles from the section lines of Section 25, Township 6 North, Range 63 West and the bottom hole to be 1650' from the SOUTH line and 150' from the WEST line as measured at right angles from the section lines of Section 26, Township 6 North, Range 63 West of the Sixth Principal Meridian, County of Weld, State of Colorado.

I hereby state that this Well Location Certificate was prepared by me, or under my direct supervision, that the fieldwork was completed on 10/30/12, for and on behalf of Noble Energy Inc.. That this is not a Land Survey Plat or an Improvement Survey Plat, and that it is not to be relied upon for establishment of fence, building, or other future improvement lines.

NOTE:

- 1) Bearings shown are Grid Bearings of the Colorado State Plane Coordinate System, North Zone, North American Datum 1983/2007. The lineal dimensions as contained herein are based upon the "U.S. Survey Foot."
- 2) Ground elevations are based on an observed GPS elevation (NAVD 1988 DATUM).
- 3) NEAREST EXISTING WELL: WELLS RANCH USX AA25-63-1HN, 263'
- 4) IMPROVEMENTS: See LOCATION DRAWING for all visible improvements within 400' of disturbed area.
- 5) SURFACE USE: RANGELAND / EX. WELL PAD
- 6) INSTRUMENT OPERATOR: WYATT HALL

NOTE

According to Colorado law, you must commence any legal action based upon any defect in this W.L.C. within three years after you discover such defect. In no event, may any action based upon any defect in this survey be commenced more than ten years after the date of the certificate shown hereon. (13-80-105 C.R.S.)

LEGEND

- = ALIQUOT MONUMENT AS DESCRIBED
- = CALCULATED POSITION

SURFACE LOCATION

LAT: 40.45495°N
LONG: 104.39410°W
PDOP: 2.5
ELEV: 4790'
1/4,1/4: NW1/4SW1/4
NEAREST PROPERTY LINE: 153' W

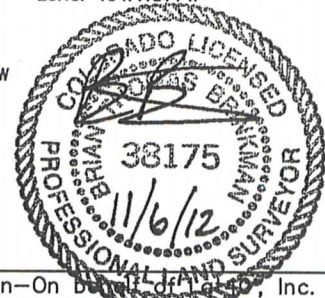
BOTTOM HOLE

LAT: 40.45477°N
LONG: 104.41314°W

SHEET 1 OF 2

Brian T. Brinkman—On behalf of Lat40°, Inc.
Colorado Licensed Professional
Land Surveyor No. 38175

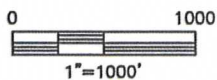
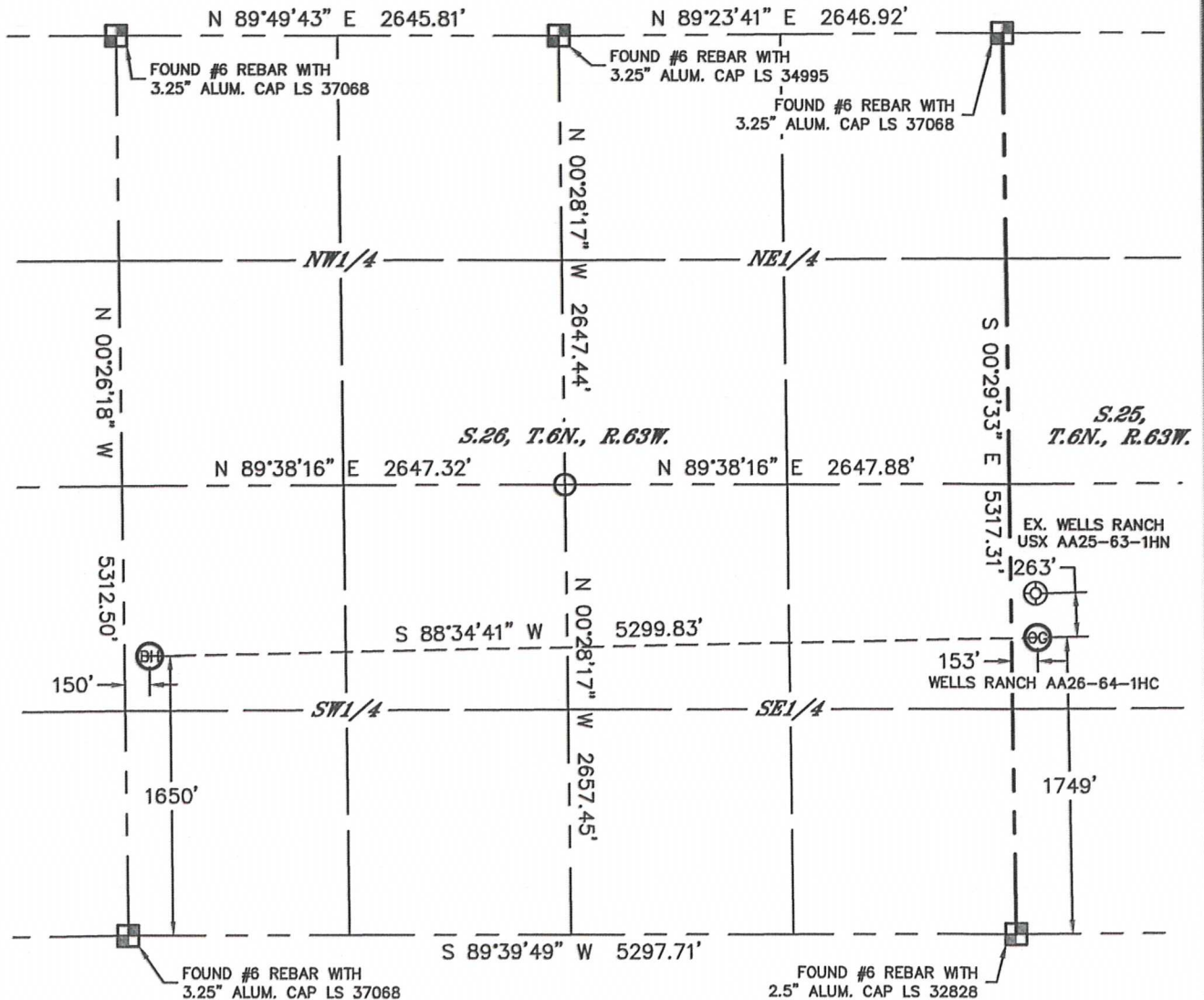
DATE: rev11/06/2012
PROJECT#: 2012141



WELL LOCATION CERTIFICATE

THIS MAP DOES NOT REPRESENT A BOUNDARY SURVEY

SECTION: 25
TOWNSHIP: 6N
RANGE: 63W



NOTE

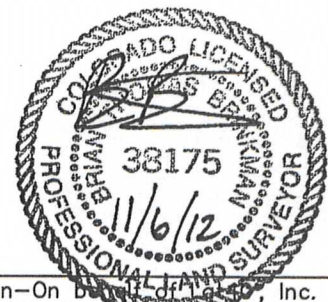
According to Colorado law, you must commence any legal action based upon any defect in this W.L.C. within three years after you discover such defect. In no event, may any action based upon any defect in this survey be commenced more than ten years after the date of the certificate shown hereon. (13-80-105 C.R.S.)

LEGEND

- = ALIQUOT MONUMENT AS DESCRIBED
- = CALCULATED POSITION

SHEET 2 OF 2

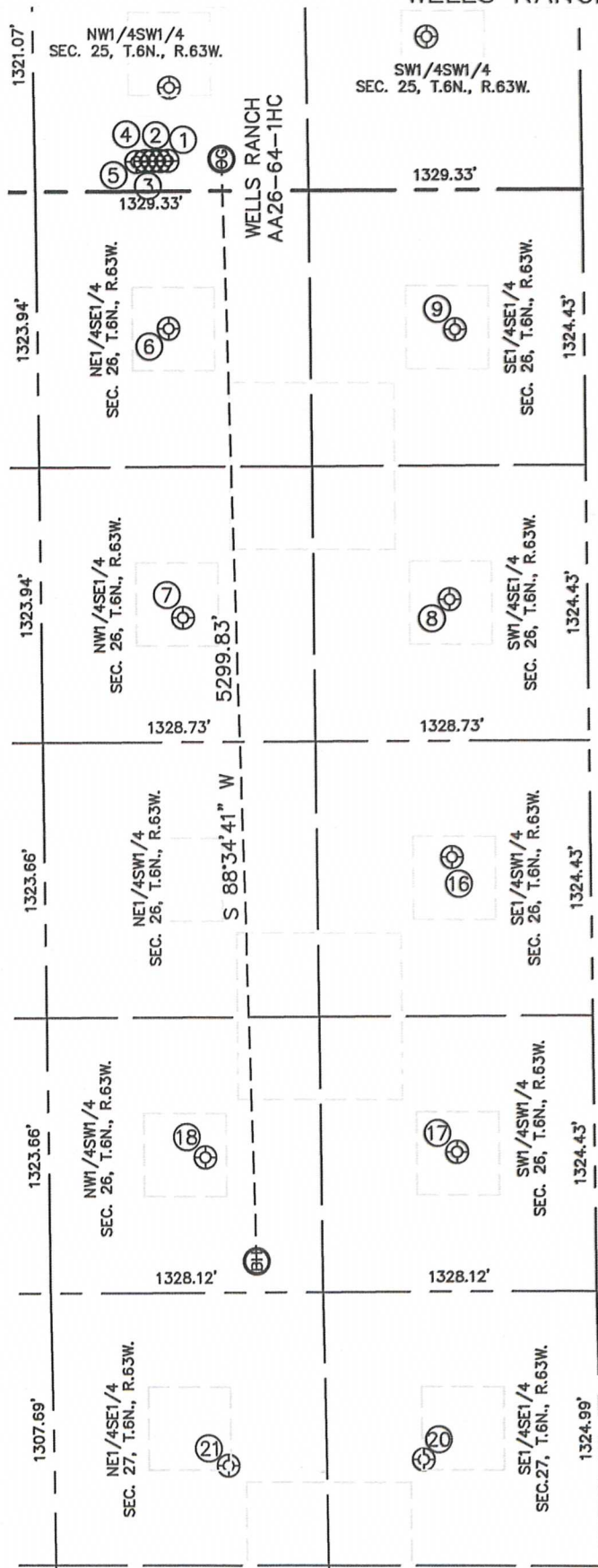
Brian T. Brinkman-On Demand Land Survey, Inc.
Colorado Licensed Professional Land Surveyor No. 38175
DATE: rev11/06/2012
PROJECT#: 2012141



SITE SKETCH

WELLS RANCH AA26-64-1HC

SECTION: 25
TOWNSHIP: 6N
RANGE: 63W



- | | | |
|--|--|--|
| <p>①
WELLS RANCH USX
AA25-63-1HN
NW1/4SW1/4
2012' FSL
146' FWL
LAT-40.45567°N
LONG-104.39412°W
PDOP: 5.3
ELEV: 4791'</p> | <p>②
WELLS RANCH USX
AA25-64-1HN
NW1/4SW1/4
2049' FSL
145' FWL
LAT-40.45577°N
LONG-104.39412°W
PDOP: 1.7
ELEV: 4792'</p> | <p>③
WELLS RANCH USX
AA25-65-1HN
NW1/4SW1/4
2086' FSL
146' FWL
LAT-40.45587°N
LONG-104.39412°W
PDOP: 1.8
ELEV: 4792'</p> |
| <p>④
WELLS RANCH USX
AA25-65HN
NW1/4SW1/4
2123' FSL
145' FWL
LAT-40.45598°N
LONG-104.39412°W
PDOP: 2.5
ELEV: 4791'</p> | <p>⑤
WELLS RANCH USX
AA25-66-1HN
NW1/4SW1/4
2164' FSL
142' FWL
LAT-40.45609°N
LONG-104.39413°W
PDOP: 2.3
ELEV: 4791'</p> | <p>⑥
WELLS RANCH AA26-09
NE1/4SE1/4
2020' FSL
660' FEL
LAT-40.45570°N
LONG-104.39701°W
PDOP: 2.8
ELEV: 4819'</p> |
| <p>⑦
WELLS RANCH AA26-10
NW1/4SE1/4
1967' FSL
2049' FEL
LAT-40.45558°N
LONG-104.40201°W
PDOP: 2.0
ELEV: 4854'</p> | <p>⑧
WELLS RANCH AA26-15
SW1/4SE1/4
669' FSL
1968' FEL
LAT-40.45202°N
LONG-104.40173°W
PDOP: 2.0
ELEV: 4822'</p> | <p>⑨
WELLS RANCH AA26-16
SE1/4SE1/4
626' FSL
672' FEL
LAT-40.45188°N
LONG-104.39708°W
PDOP: 1.4
ELEV: 4818'</p> |
| <p>⑬
WELLS RANCH AA26-14
SE1/4SW1/4
674' FSL
2087' FWL
LAT-40.45206°N
LONG-104.40619°W
PDOP: 1.3
ELEV: 4812'</p> | <p>⑰
WELLS RANCH AA26-13X
SW1/4SW1/4
667' FSL
671' FWL
LAT-40.45206°N
LONG-104.41128°W
PDOP: 1.3
ELEV: 4821'</p> | <p>⑱
WELLS RANCH AA26-12
NW1/4SW1/4
1894' FSL
650' FWL
LAT-40.45543°N
LONG-104.41134°W
PDOP: 1.3
ELEV: 4839'</p> |
| <p>⑳
WELLS RANCH 44-27
SE1/4SE1/4
857' FSL
808' FEL
LAT-40.45259°N
LONG-104.41659°W
PDOP: 1.6
ELEV: 4846'</p> | <p>㉑
WELLS RANCH 43-27
NE1/4SE1/4
1809' FSL
833' FEL
LAT-40.45520°N
LONG-104.41667°W
PDOP: 1.6
ELEV: 4838'</p> | |

