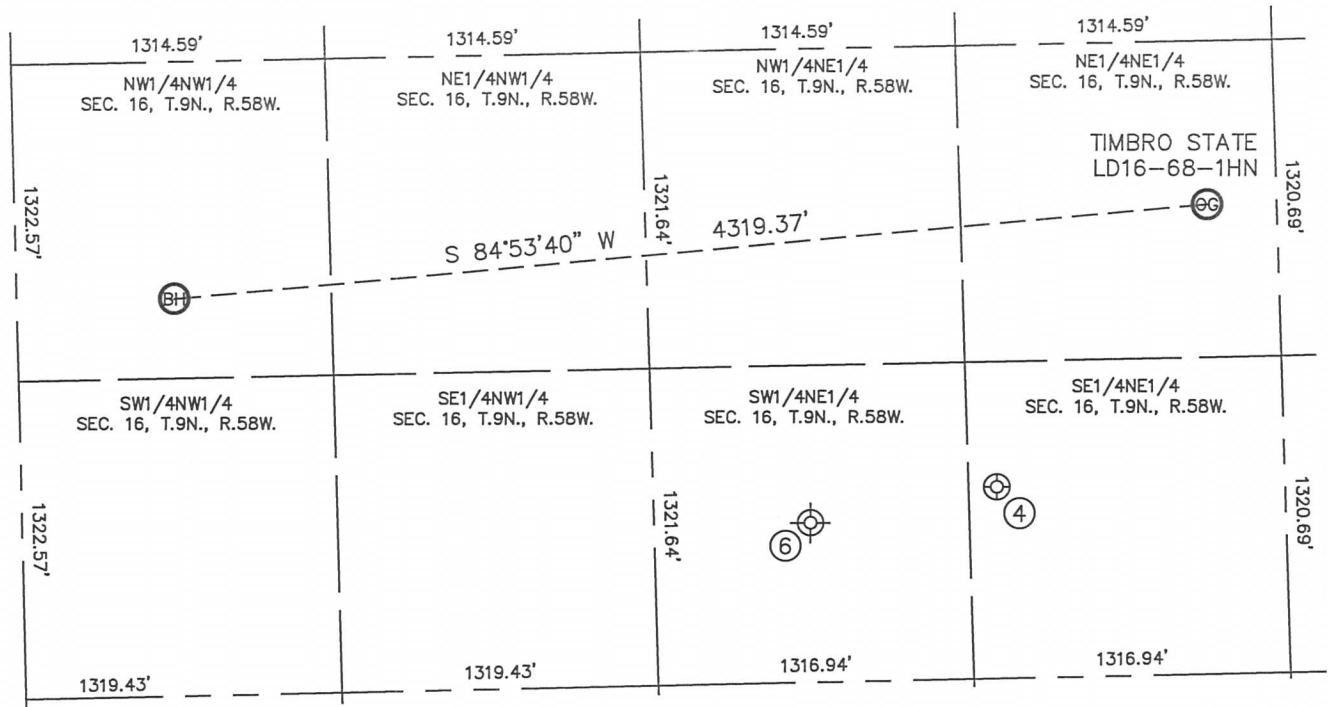


SITE SKETCH

TIMBRO STATE LD16-68-1HN

SECTION: 16
TOWNSHIP: 9N
RANGE: 58W



④

TIMBRO PC LD16-17
SE1/4NE1/4
1846' FNL
1200' FEL
LAT-40.75352N
LONG-103.86408W
PDOP:1.7
ELEV: 4776'

⑥

BIBO STATE 1
(Drilled & Abandoned)
SW1/4NE1/4
1980' FNL (COGCC)
1980' FEL (COGCC)
LAT-40.75306N (COGCC)
LONG-103.86690W (COGCC)
PDOP:N/A
ELEV: 4794' (COGCC)

