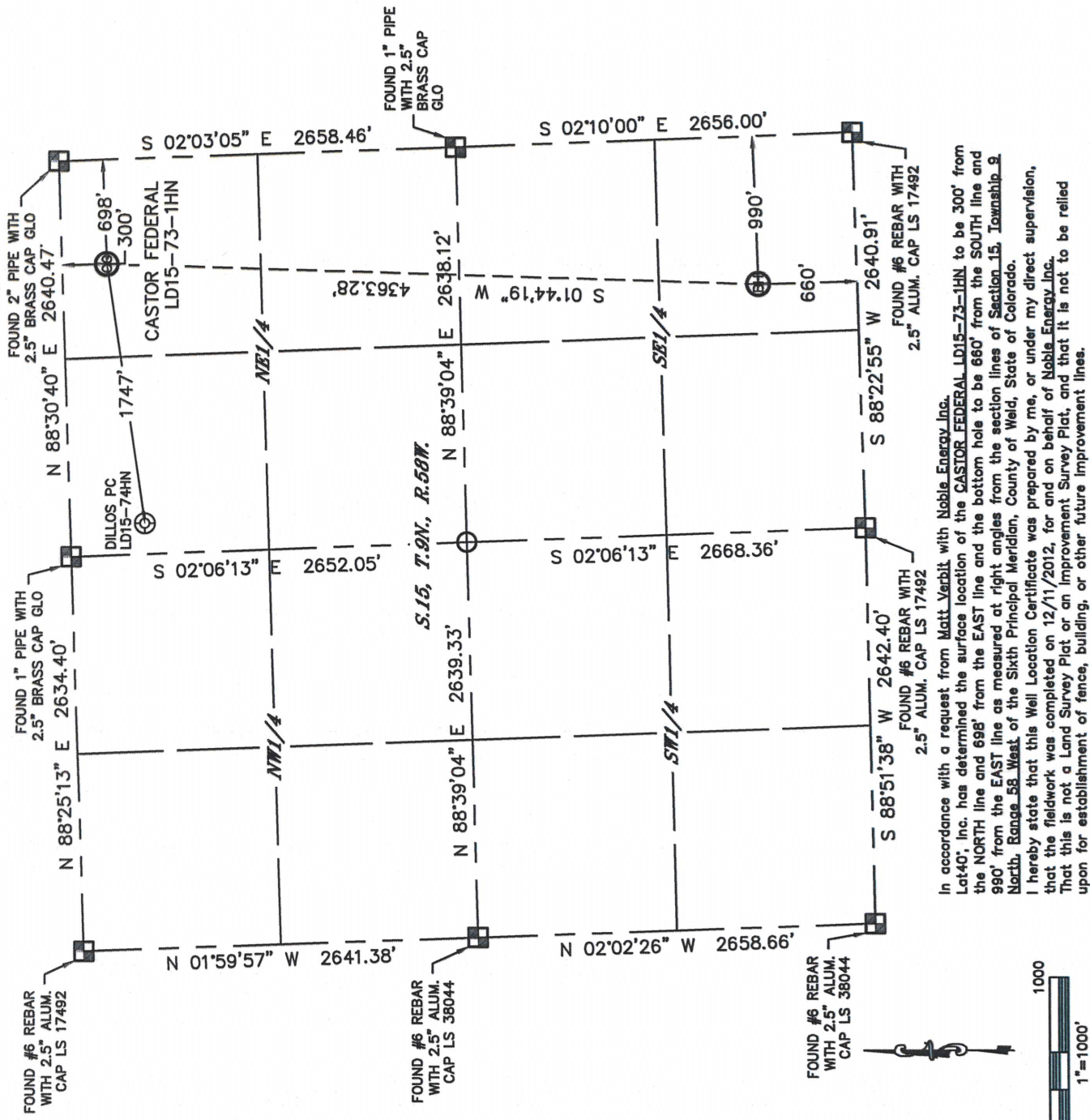


Lat40°, Inc. 1635 Foxtrail Drive, Suite 325 Loveland, CO 970-776-3321

WELL LOCATION CERTIFICATE

SECTION: 15
TOWNSHIP: 9N
RANGE: 58W

THIS MAP DOES NOT REPRESENT A BOUNDARY SURVEY



NOTE:

- 1) Bearings shown are Grid Bearings of the Colorado State Plane Coordinate System, North Zone, North American Datum 1983/2007. The lined dimensions as contained herein are based upon the "U.S. Survey Foot." (NAVD 1988 DATUM).
- 2) Ground elevations are based on an observed GPS elevation
- 3) NEAREST EXISTING WELL: DILLOS PC LD15-74HN, 1747'
- 4) IMPROVEMENTS: See LOCATION DRAWING for all viable improvements within 400' of disturbed area.
- 5) SURFACE USE: RANGELAND
- 6) INSTRUMENT OPERATOR: BRIAN ROTTINGHAUS

SURFACE LOCATION

LAT: 40.75786°N
LONG: 103.84332°W
PDOP: 1.5
ELEV: 4708'

BOTTOM HOLE
LAT: 40.74580°N
LONG: 103.84409°W

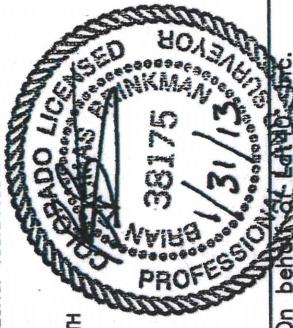
1/4, 1/4: NE1/NE1/4
NEAREST PROPERTY LINE: 300' NORTH

NOTE

According to Colorado law, you must commence any legal action based upon any defect in this W.L.C. within three years after you discover such defect. In no event, may any action based upon any defect in this survey be commenced more than ten years after the date of the certificate shown hereon. (13-80-105 C.R.S.)

LEGEND

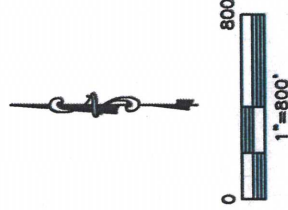
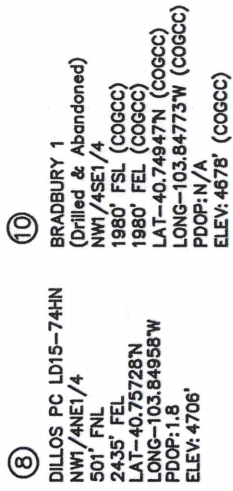
- = ALIQUOT MONUMENT AS DESCRIBED
○ = CALCULATED POSITION



Brian T. Brinkman—On behalf of Lat40°, Inc.
Colorado Licensed Professional
Land Surveyor No. 38175
DATE: 1/31/2013
PROJECT#: 2012159

SITE SKETCH

CASTOR FEDERAL LD15-73-1HN



DATE: 1/31/2013
PROJECT#: 2012159