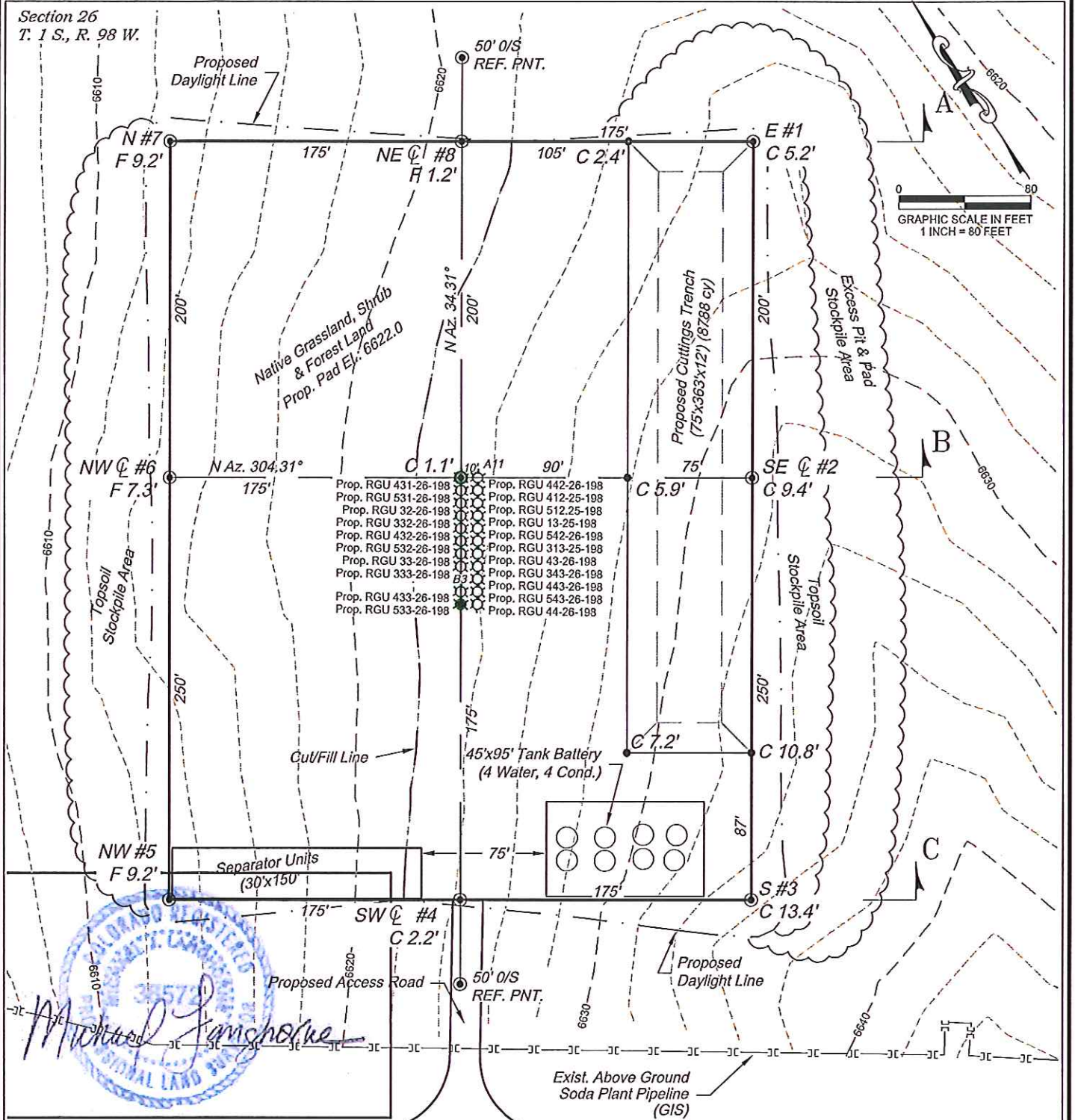


Section 26
T. 1 S., R. 98 W.



ESTIMATED EARTHWORK QUANTITIES (cy)

ITEM	CUT	FILL	TOPSOIL	EXCESS
PAD	18401	11499	6510	392
PIT	9660			9660
TOTALS	28061	11499	6510	10052

Exist. County Road

*NOTE:

- 1.) 10% SWELL FACTOR APPLIED TO CUT VOLUME.
- 2.) TOPSOIL VOLUME BASED ON 12" SOIL DEPTH.
- 3.) TOTAL DISTURBED AREA = 6.78 ac.

REVISED: 3/18/13

Construction Plan Prepared for:



WPX Energy Rocky Mountain, LLC

RGU 42-26-198 Drill Pad - Plat 2
CONSTRUCTION LAYOUT

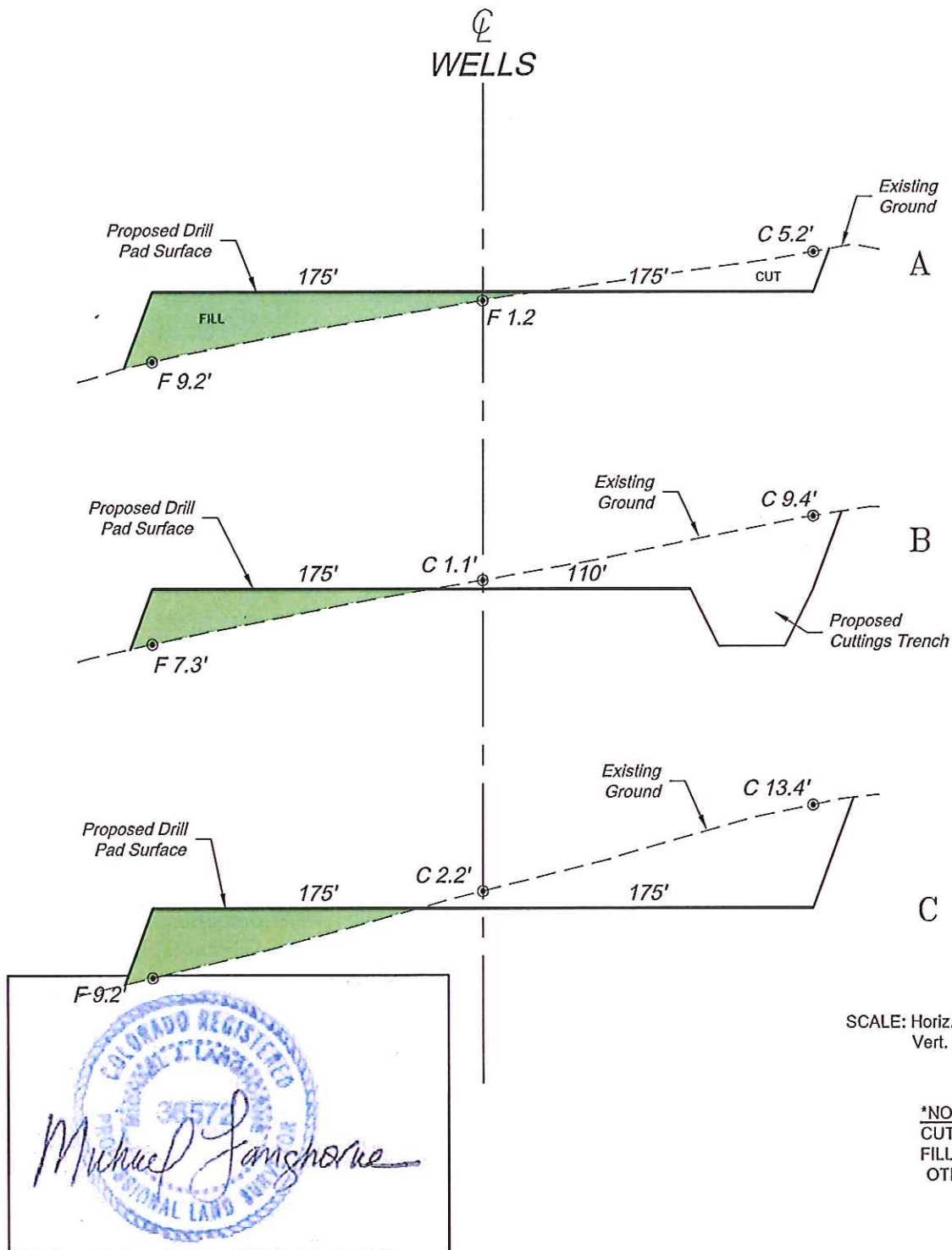
136 East Third Street
Rifle, Colorado 81650
Ph. (970) 625-2720
Fax (970) 625-2773



BOOKCLIFF
Survey Services, Inc.

SCALE: 1" = 80'
DATE: 2/21/13
PLAT: 2 of 7
PROJECT: Highlands
DFT: cws

Section 26
T. 1 S., R. 98 W.



SCALE: Horiz.: 1" = 80'
Vert.: 1" = 20'

*NOTE:
CUT SLOPE: 1.5:1
FILL SLOPE: 1.5:1,
OTHERWISE NOTED.



REVISED: 3/18/13

Construction Plan Prepared for:



WPX Energy Rocky Mountain, LLC

RGU 42-26-198 Drill Pad - Plat 3
CONSTRUCTION LAYOUT
CROSS SECTIONS

136 East Third Street
Rifle, Colorado 81650
Ph. (970) 625-2720
Fax (970) 625-2773



BOOKCLIFF
Survey Services, Inc.

SCALE: As Noted
DATE: 2/21/13
PLAT: 3 of 7
PROJECT: Highlands
DFT: CWS