



CEMENT BOND
LOG

Company		ENCANA OIL & GAS INC. (USA)					
Well		RANCHERO #1					
Field		WATTENBURG					
County		WELD					
State		COLORADO					
Location:		API # : 005123085760000					
SEC: 34 TWP: 2N RGE: 66W		1650' FSL & 990' FWL					
Permanent Datum		GROUND LEVEL					
Log Measured From		KELLY BUSHING					
Drilling Measured From		KELLY BUSHING					
Elevation		5010'					
Other Services		NONE					
Date		MAR-28-2011					
Run Number		ONE					
Depth Driller		8084'					
Depth Logger		7555'					
Bottom Logged Interval		7555'					
Top Log Interval		40'					
Open Hole Size		7.875"					
Type Fluid		WATER					
Density / Viscosity		~8.3#					
Max. Recorded Temp.		N/A					
Estimated Cement Top		7050'					
Time Well Ready		N/A					
Time Logger on Bottom		N/A					
Equipment Number		W061/PR008					
Location		AULT					
Recorded By		C.PACE					
Witnessed By		G.CUMMINGS					
Borehole Record		Tubing Record					
Run Number	Bit	From	To	Size	Weight	From	To
ONE	12.25"	0'	211'				
TWO	7.875"	0'	8084'				
Casing Record		Size		Wgt/Ft		Top	
Surface String		8.625"		24#		0'	
Prot. String							
Production String		4.5"		11.60#		0'	
Liner						8084'	

<<< Fold Here >>>

All interpretations are opinions based on inferences from electrical or other measurements and we cannot and do not guarantee the accuracy or correctness of any interpretation, and we shall not, except in the case of gross or willful negligence on our part, be liable or responsible for any loss, costs, damages, or expenses incurred or sustained by anyone resulting from any interpretation made by any of our officers, agents or employees. These interpretations are also subject to our general terms and conditions set out in our current Price Schedule.

Comments

LOG CORRELATED TO SCHLUMBERGER FORMATION DENSITY LOG DATED DEC-27-1975

WE APPRECIATE YOUR BUSINESS, MESA WIRELINE LLC, AULT, CO. (970) 834-2495



MAIN LOG UPPER PASS

5"=100'

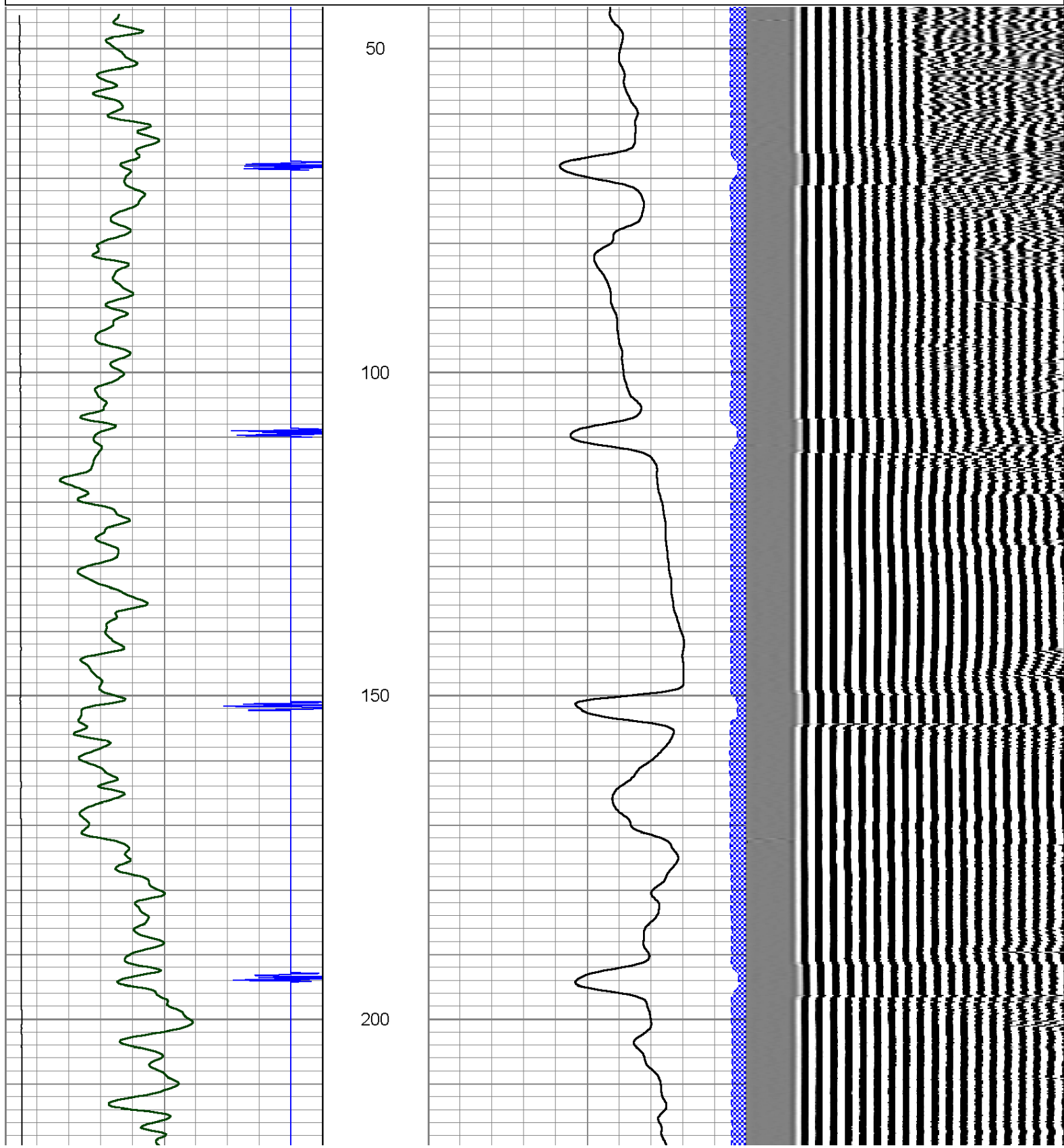
Mesa Wireline

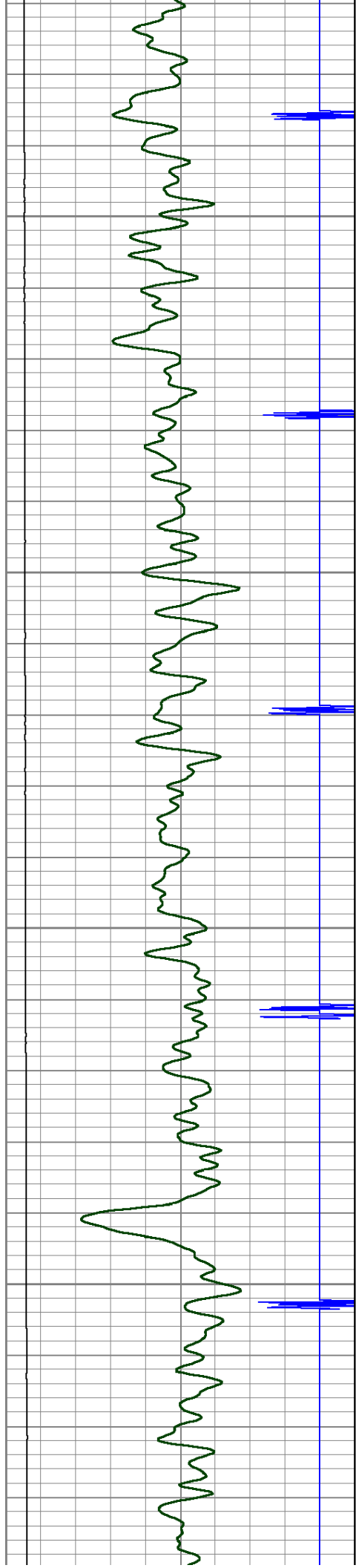
Database File: rancho1.db
Dataset Pathname: pass10
Presentation Format: cbl01
Dataset Creation: Mon Mar 28 13:43:17 2011 by Log SCH 110223
Charted by: Depth in Feet scaled 1:240

9	Collar Locator	-1
0	Gamma Ray (GAPI)	150
0	LTEN (lb)	4000

0	Amplified Amplitude (mV)	10
0	Amplitude (mV)	100
0	Travel Time (usec)	270

200 Variable Density 1200



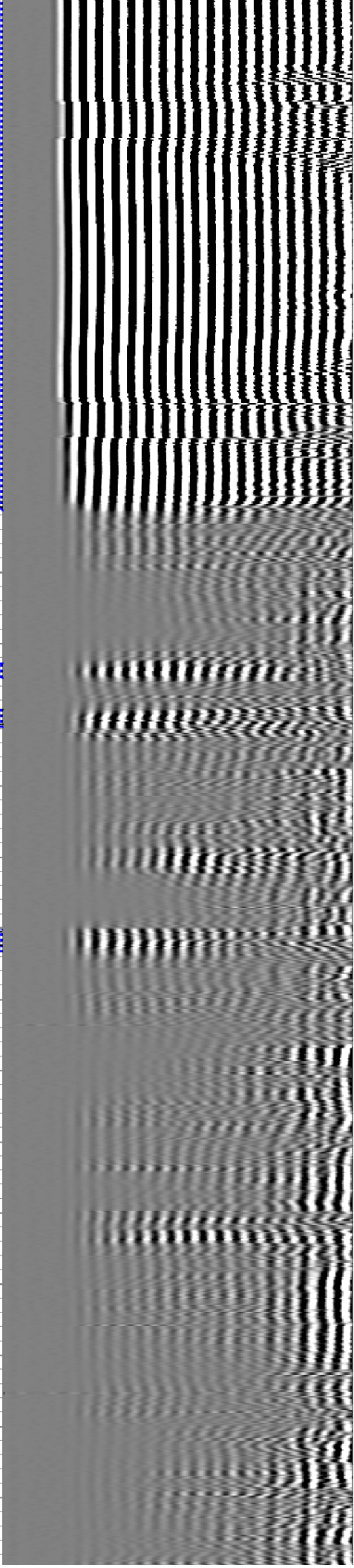
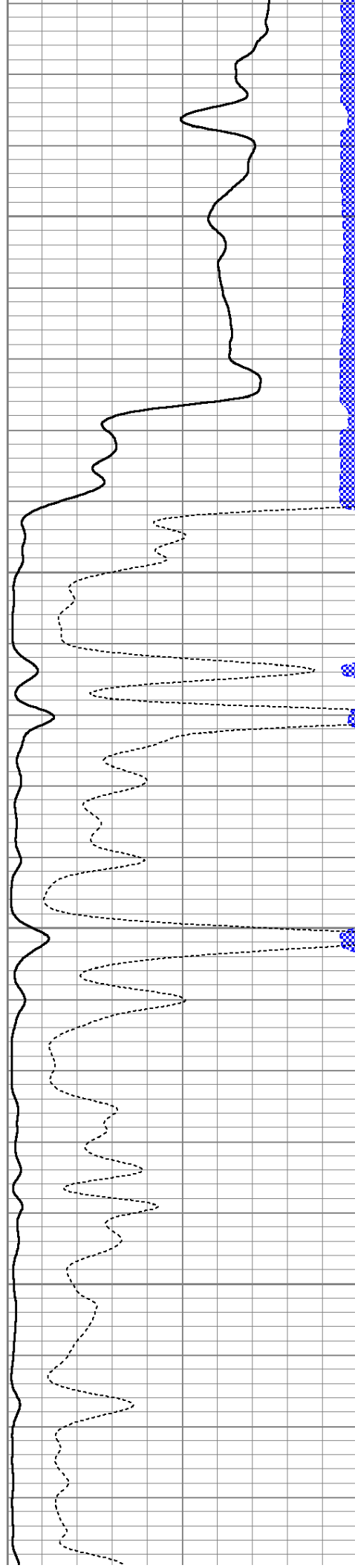


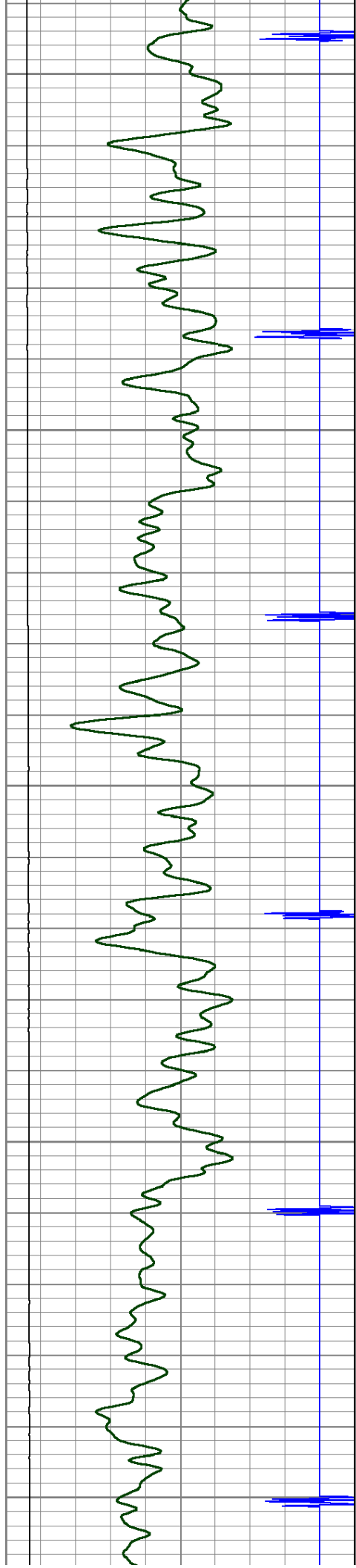
250

300

350

400





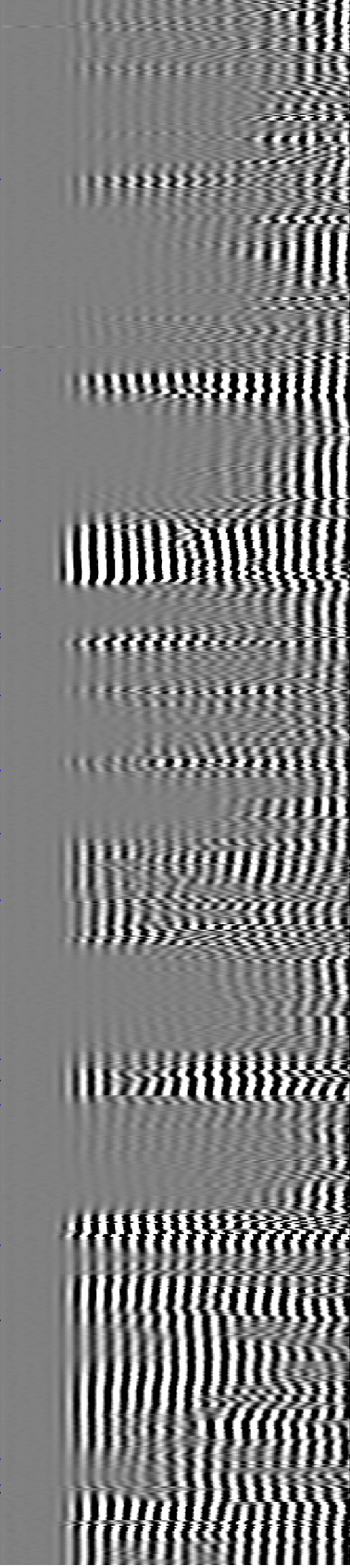
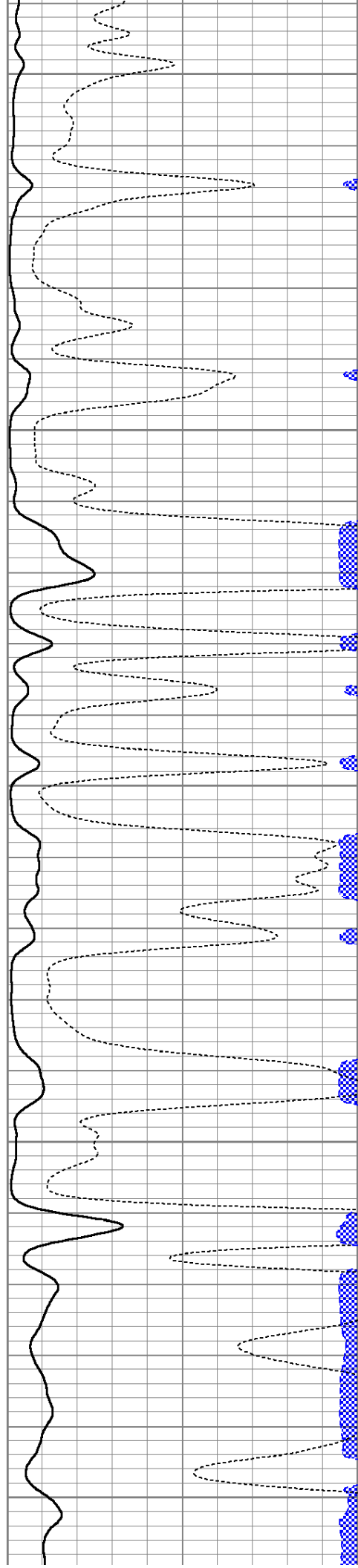
450

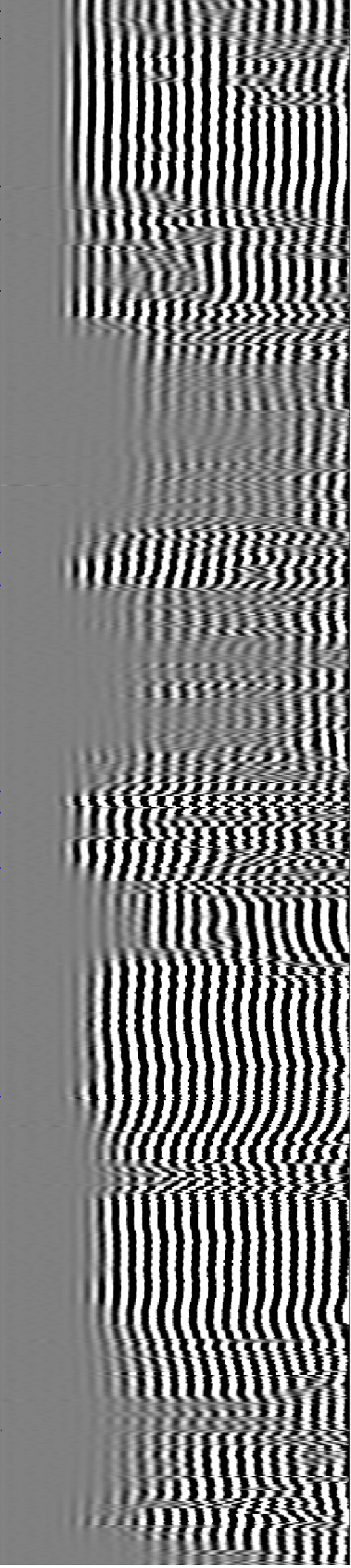
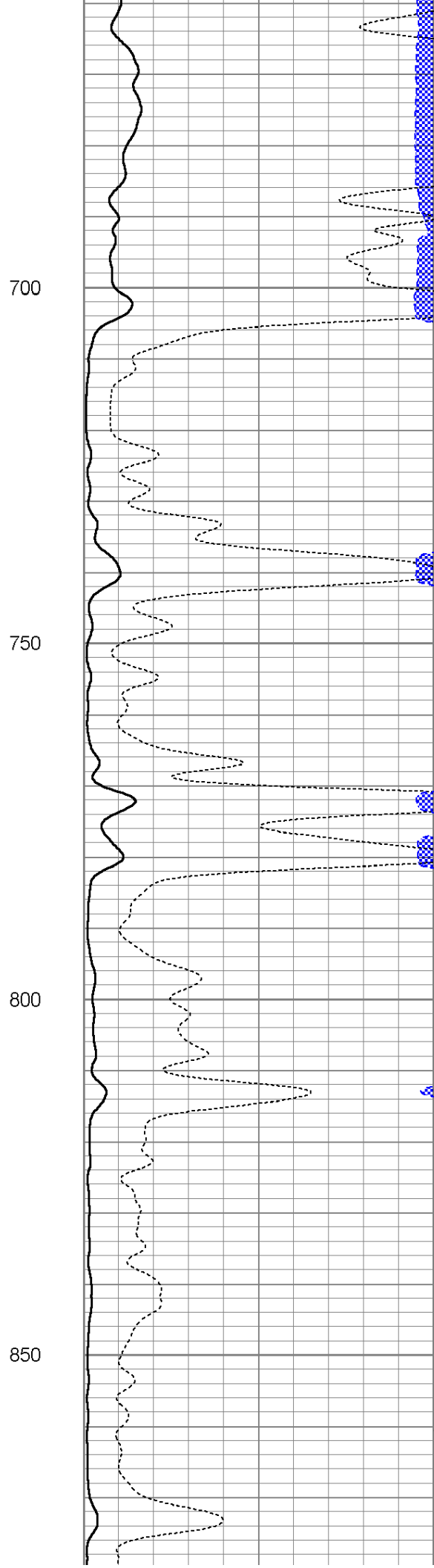
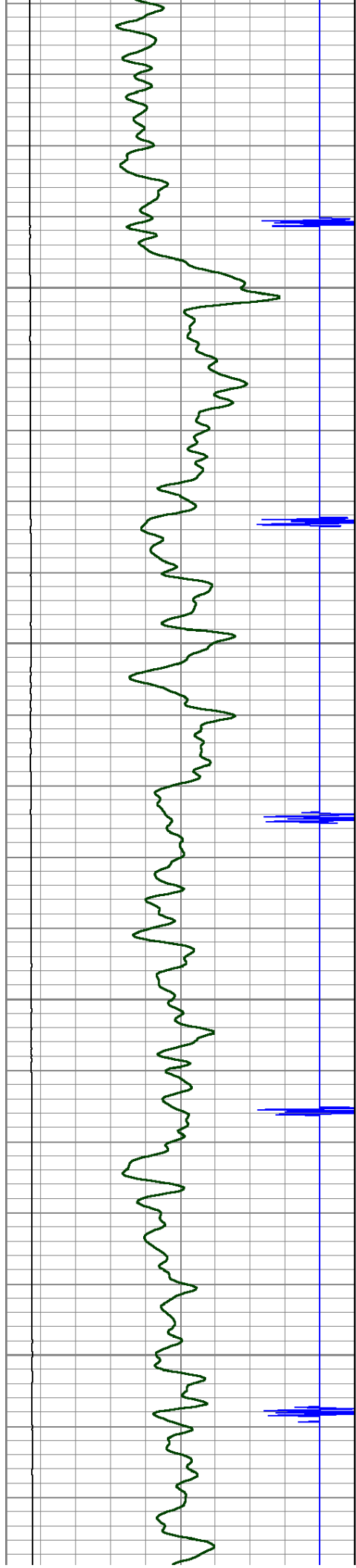
500

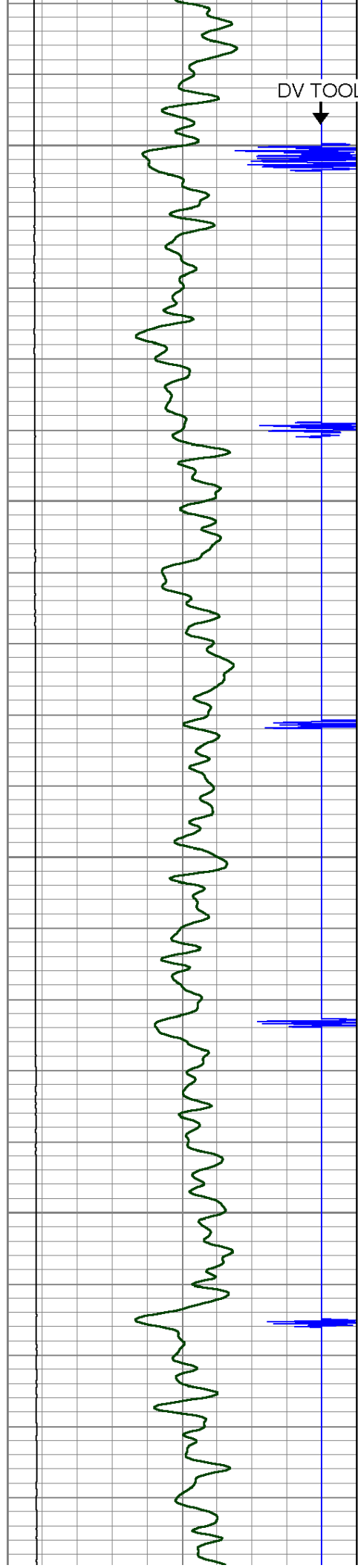
550

600

650







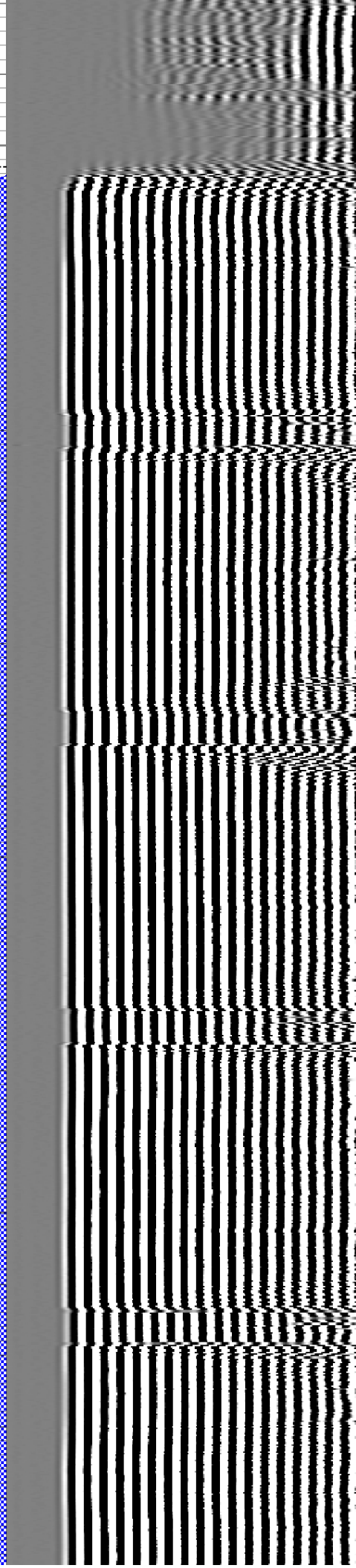
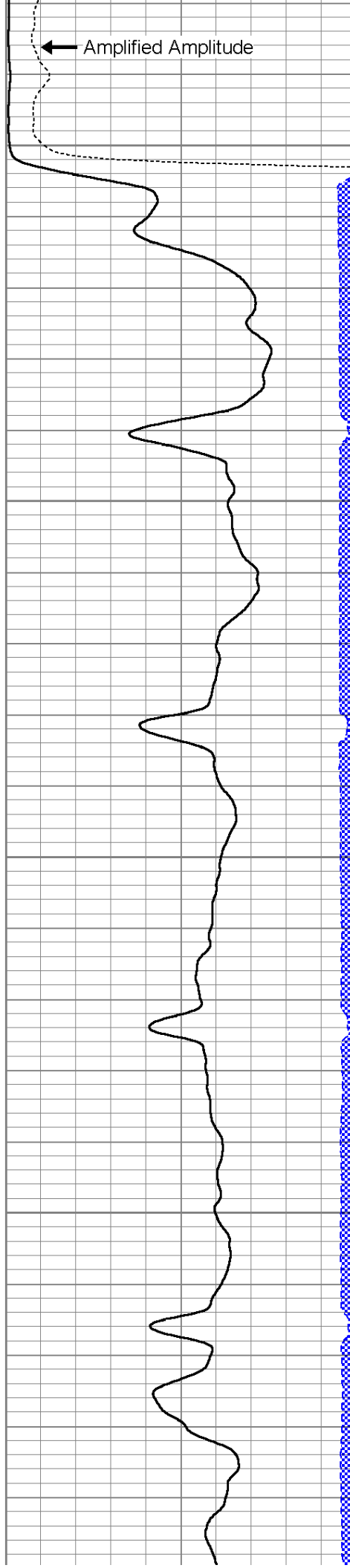
900

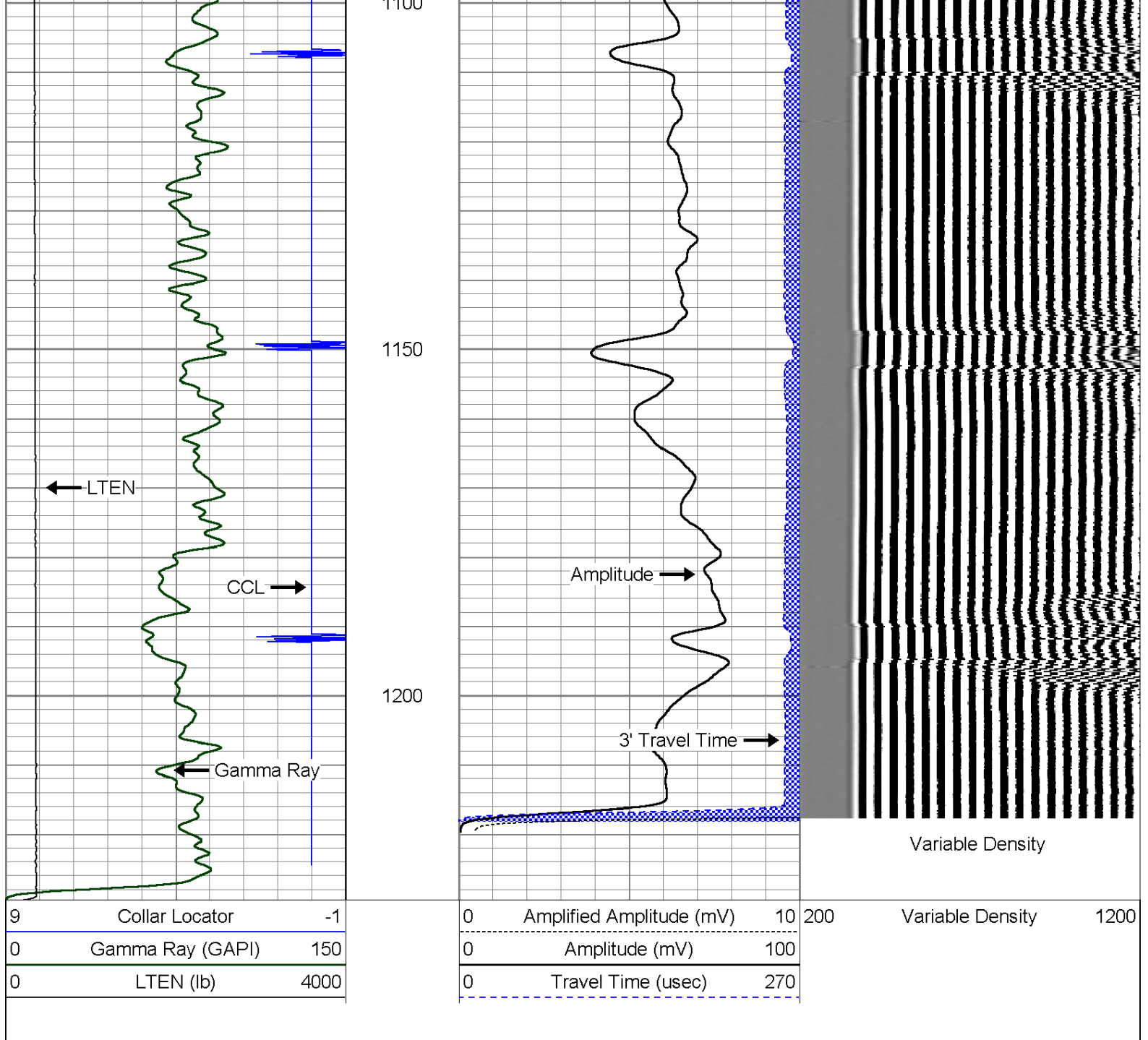
950

1000

1050

1100



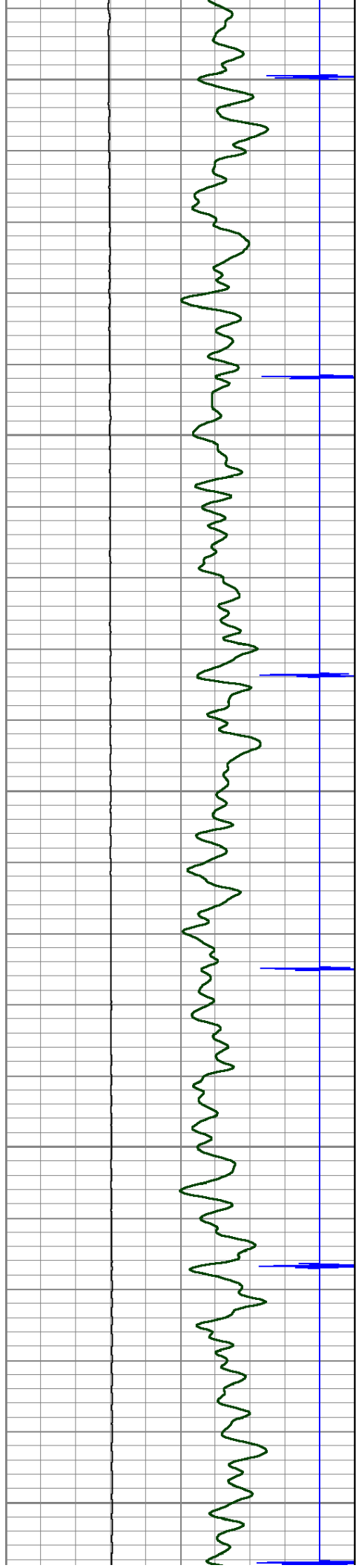


MAIN LOG LOWER PASS

5"=100'

Database File: ranchero1.db
 Dataset Pathname: pass8
 Presentation Format: cbl01
 Dataset Creation: Mon Mar 28 13:02:00 2011 by Log SCH 110223
 Charted by: Depth in Feet scaled 1:240

9	Collar Locator	-1	0	Amplified Amplitude (mV)	10	200	Variable Density	1200
0	Gamma Ray (GAPI)	150	0	Amplitude (mV)	100			
0	LTEN (lb)	4000	0	Travel Time (uSec)	270			



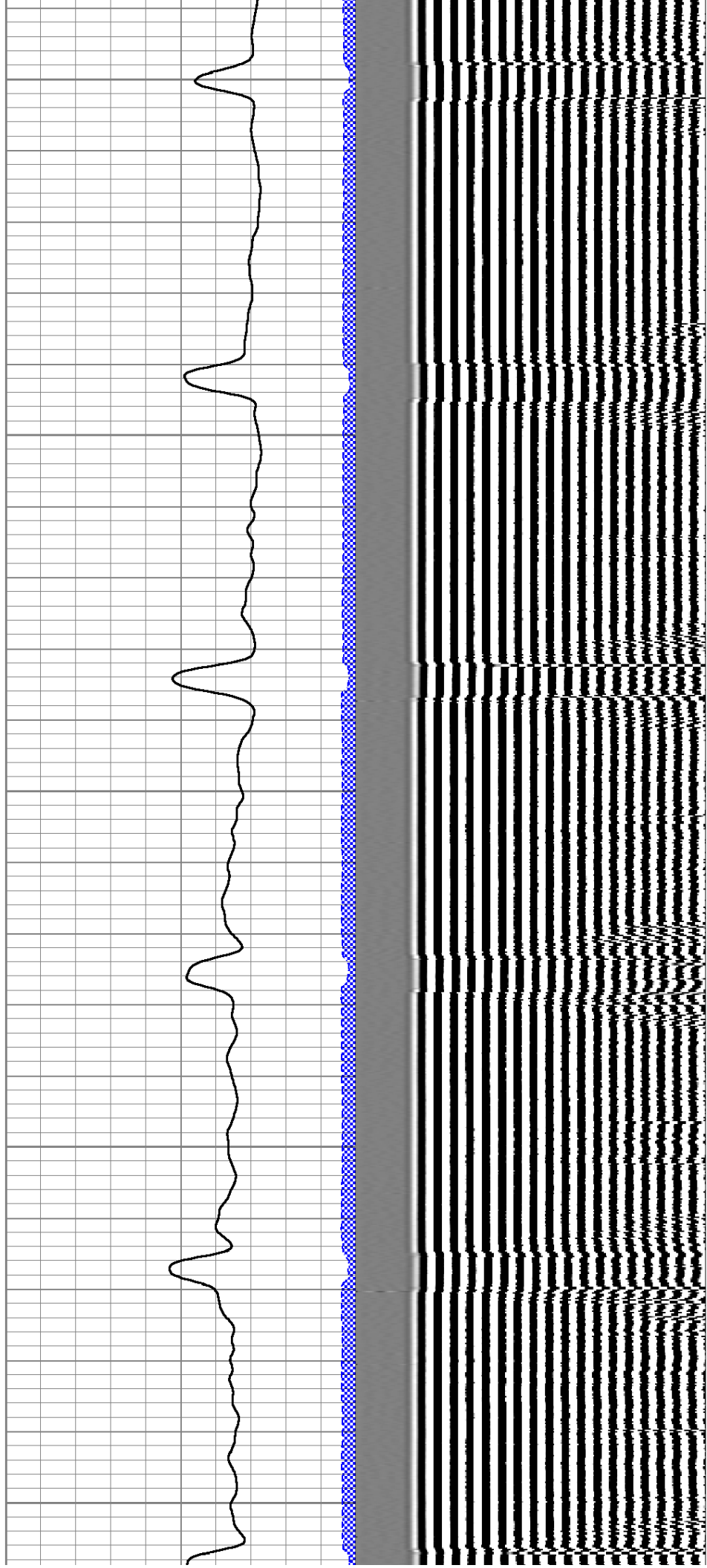
6800

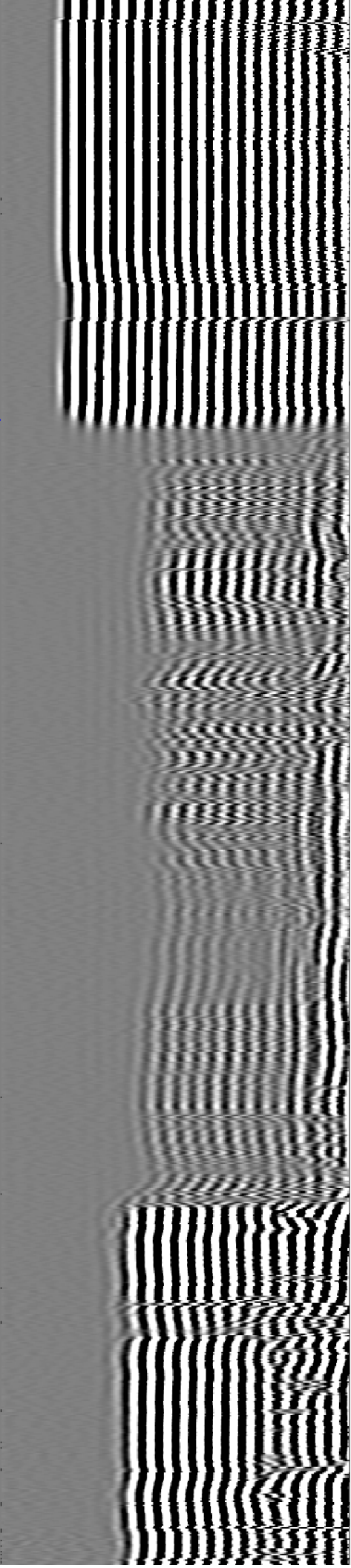
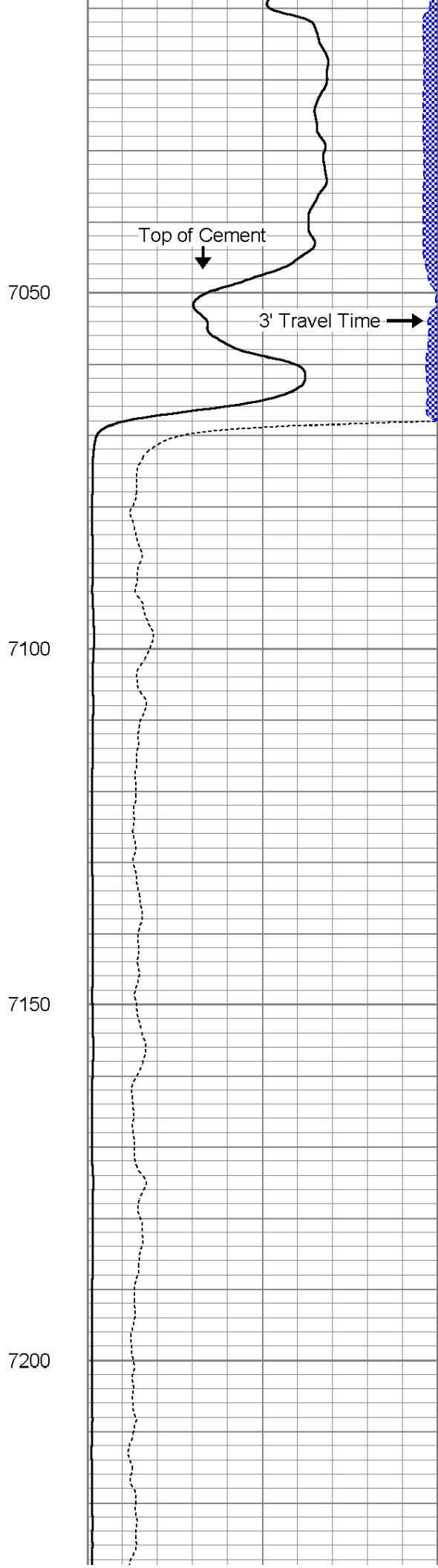
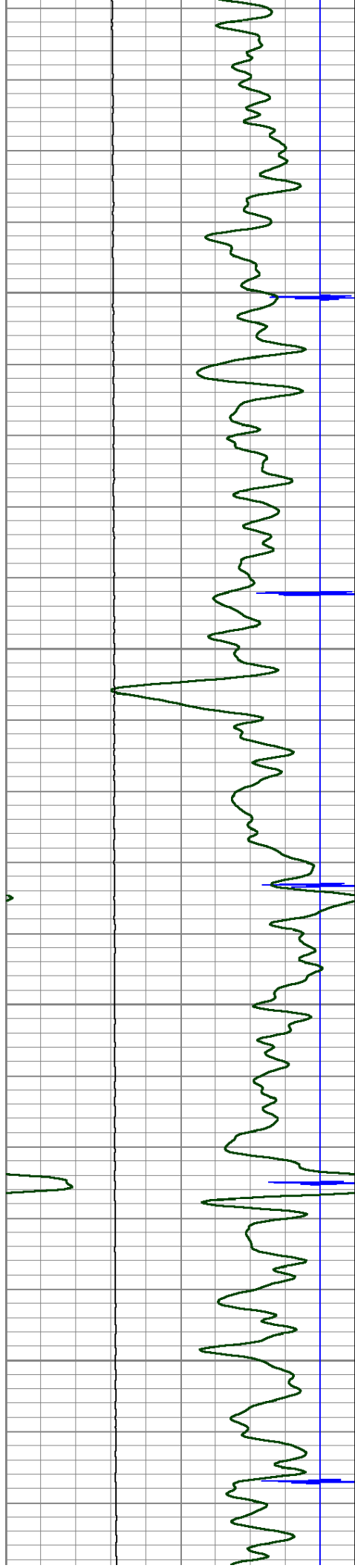
6850

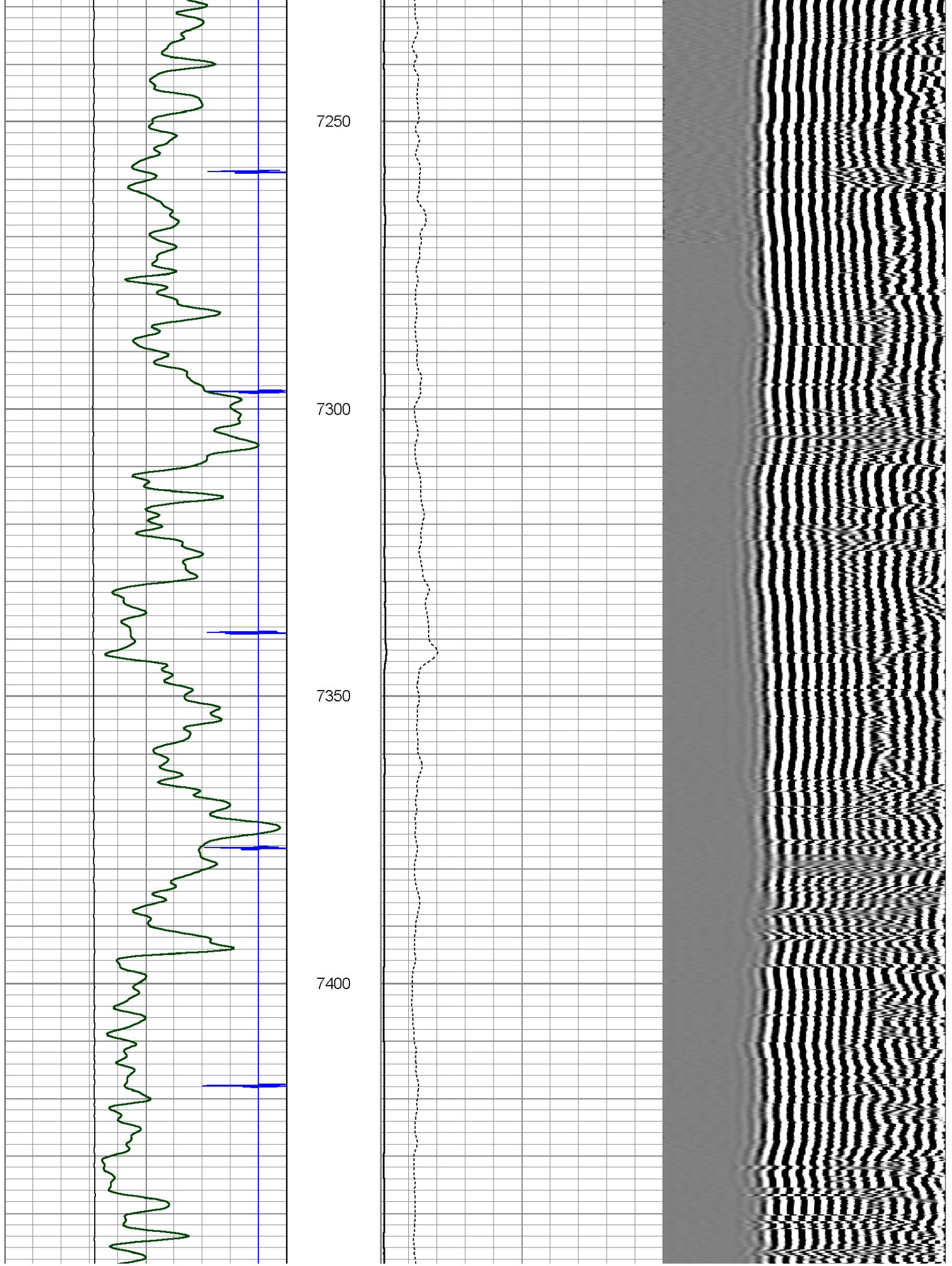
6900

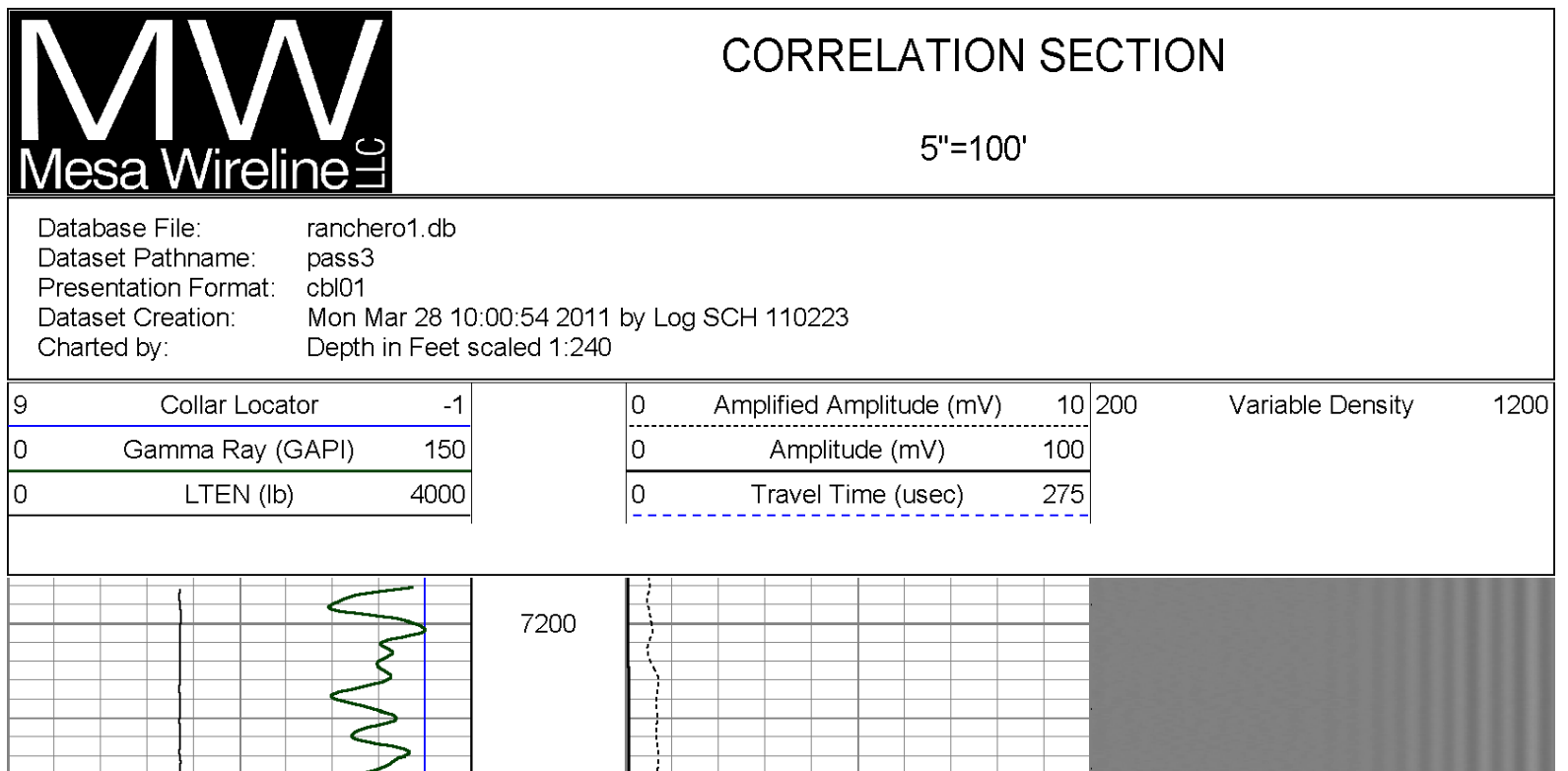
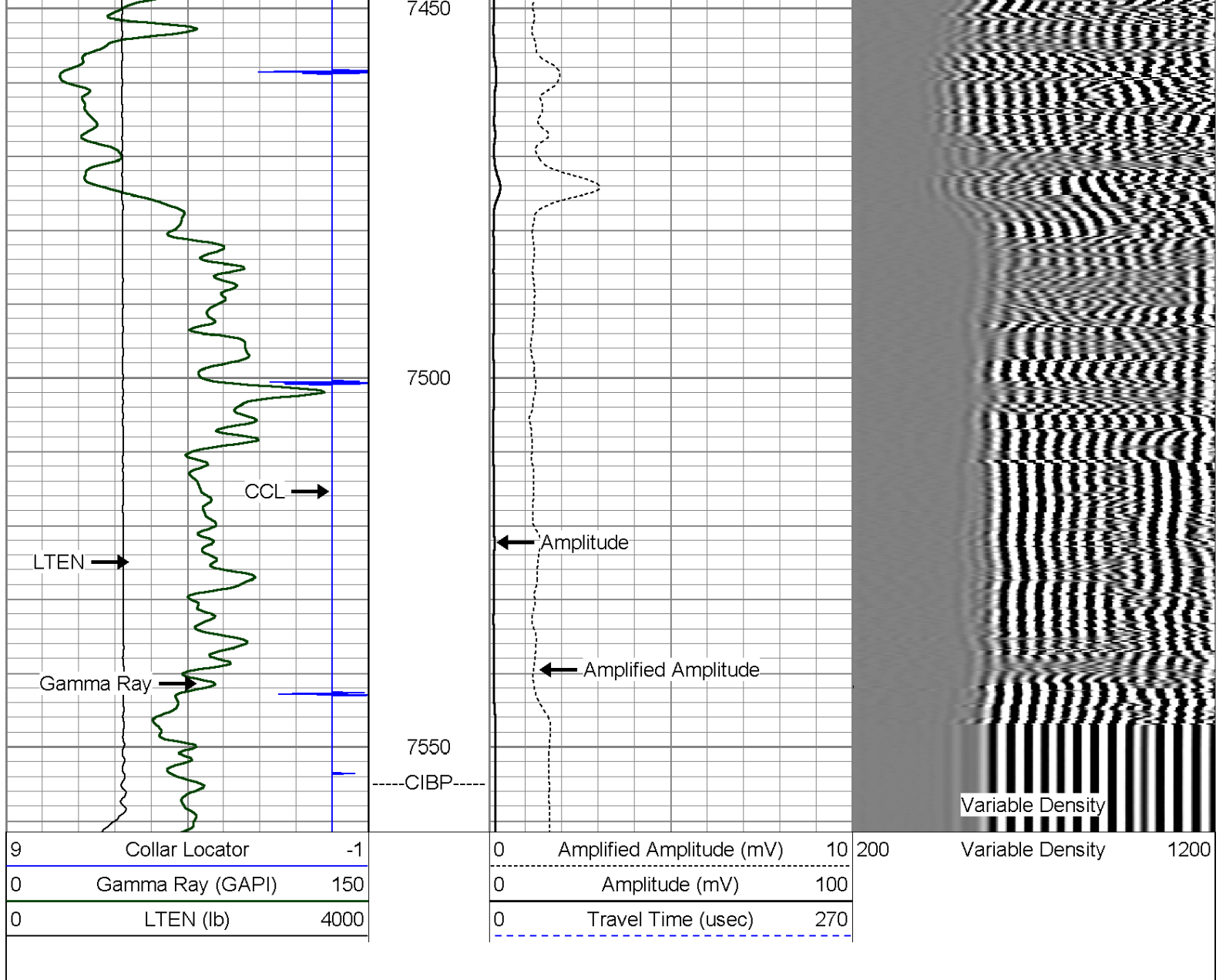
6950

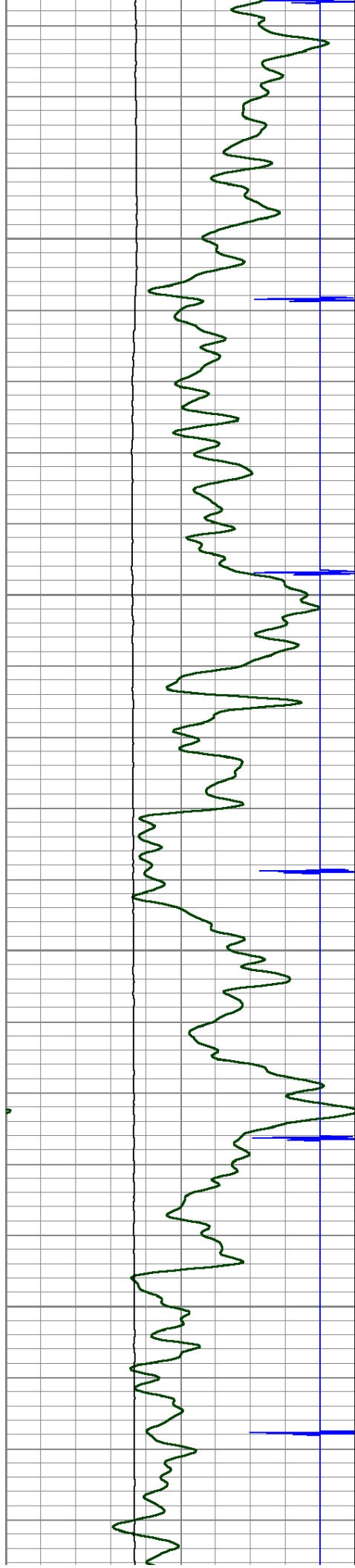
7000











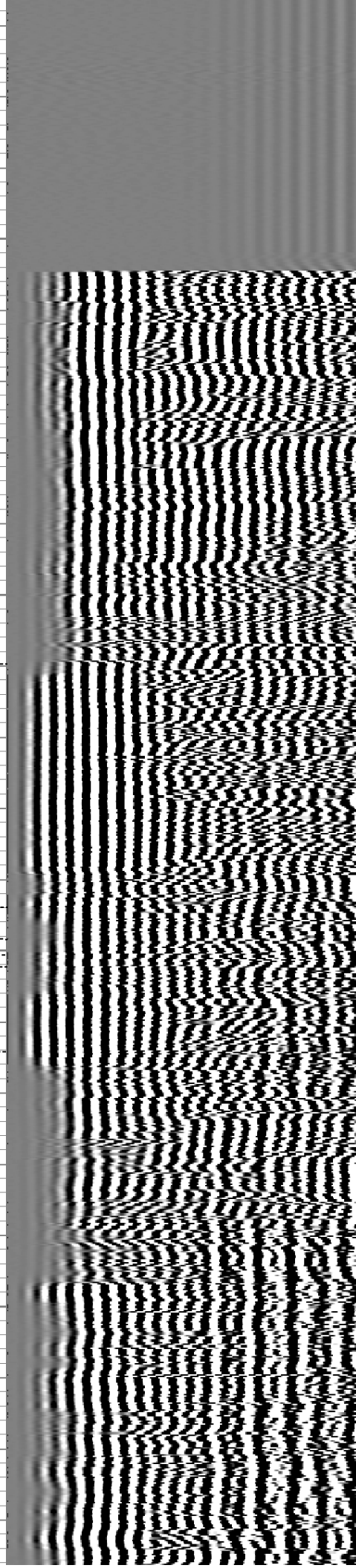
7250

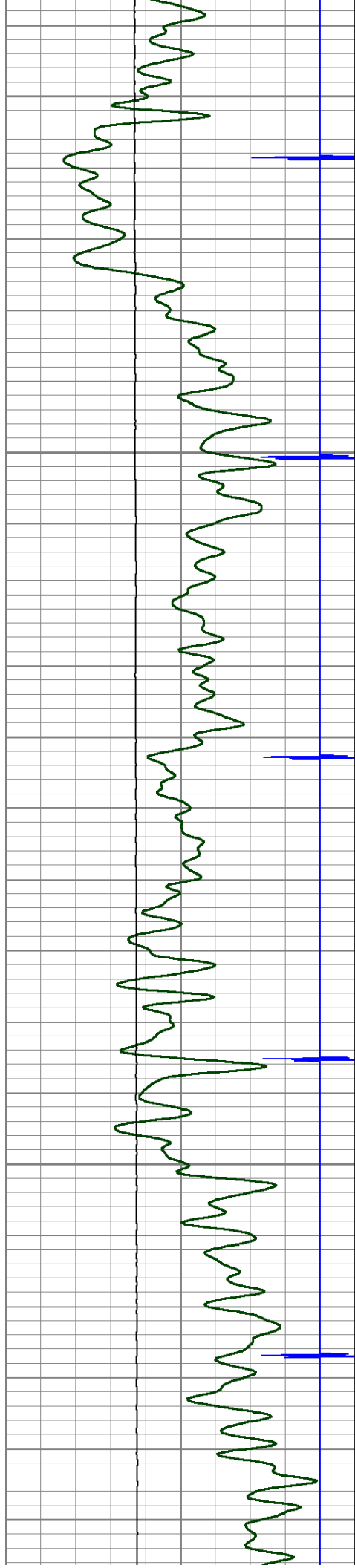
Fluid Level →

7300

7350

7400





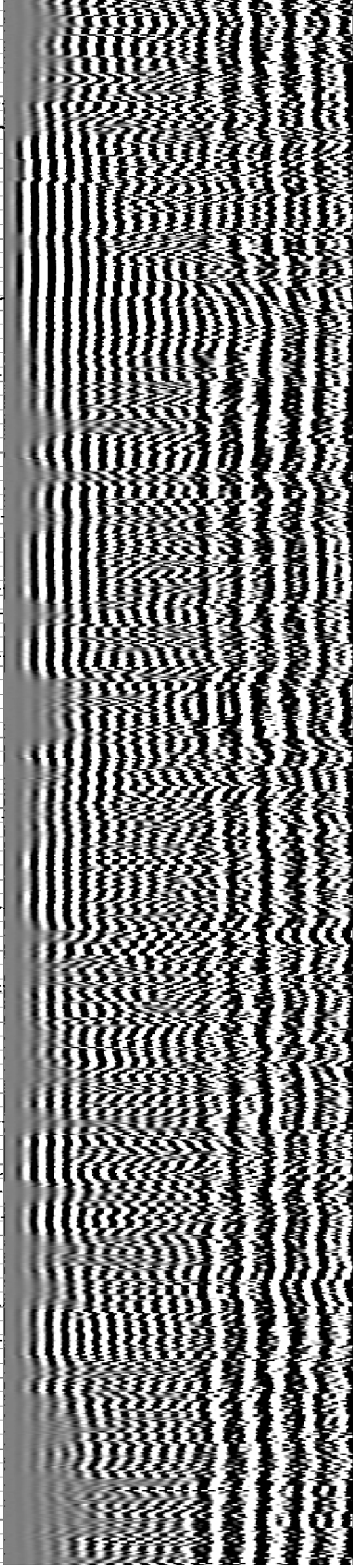
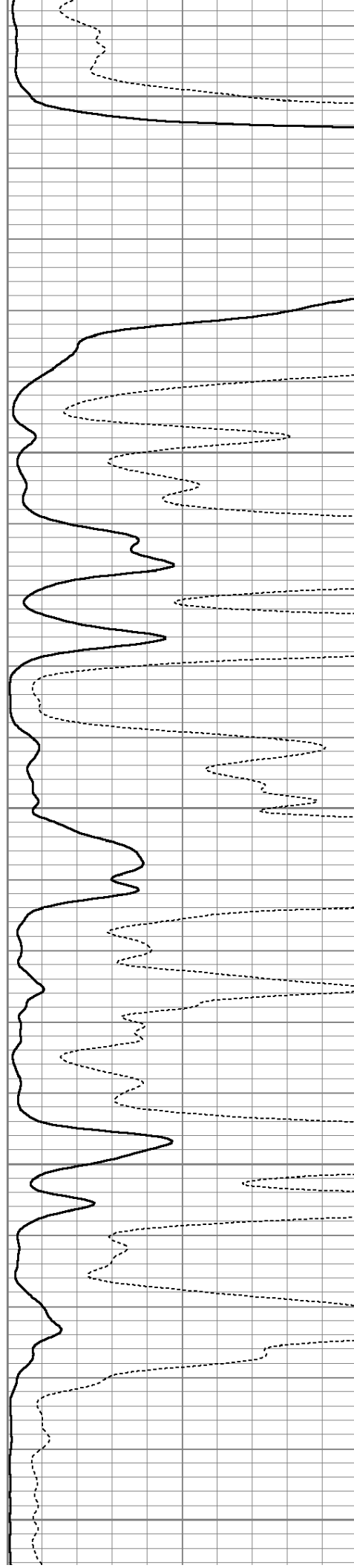
7450

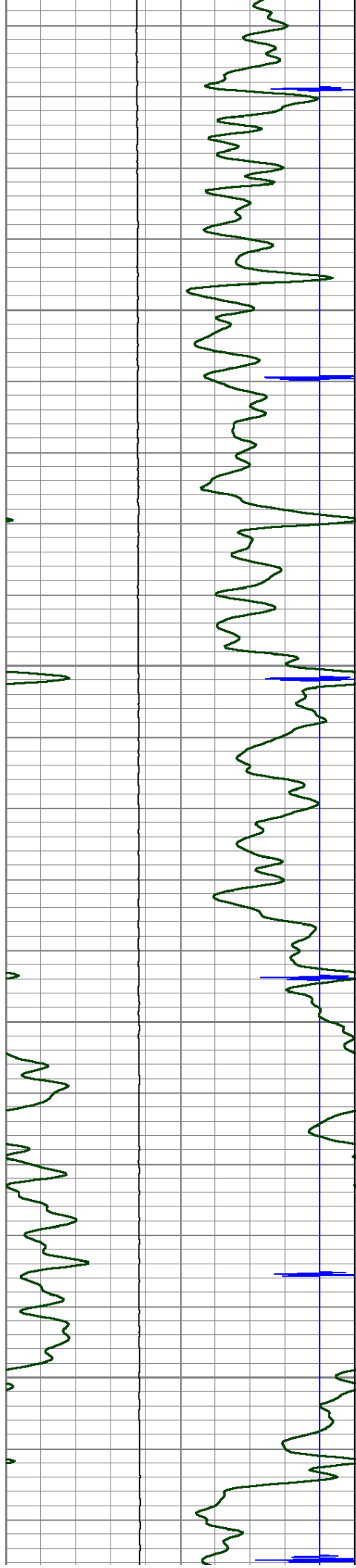
7500

7550

7600

7650



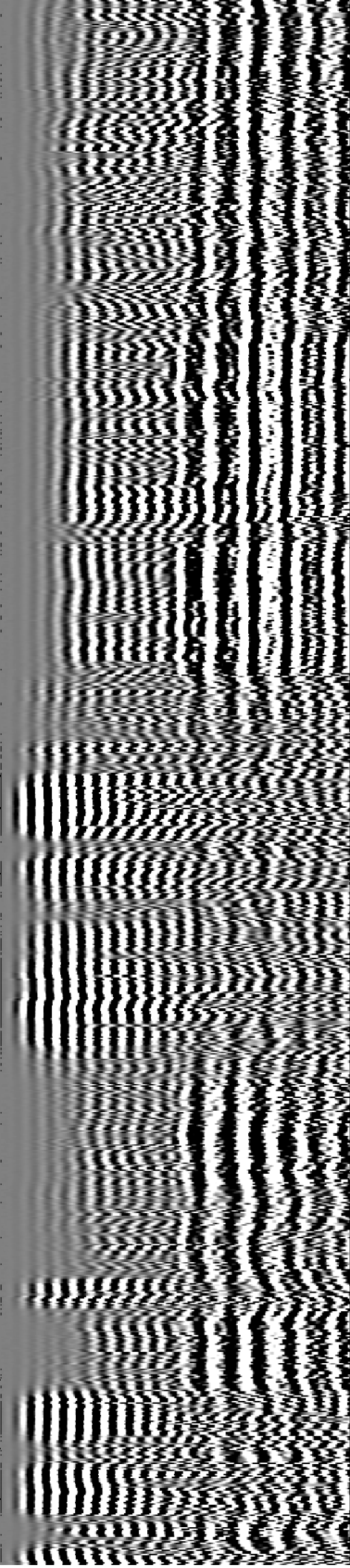
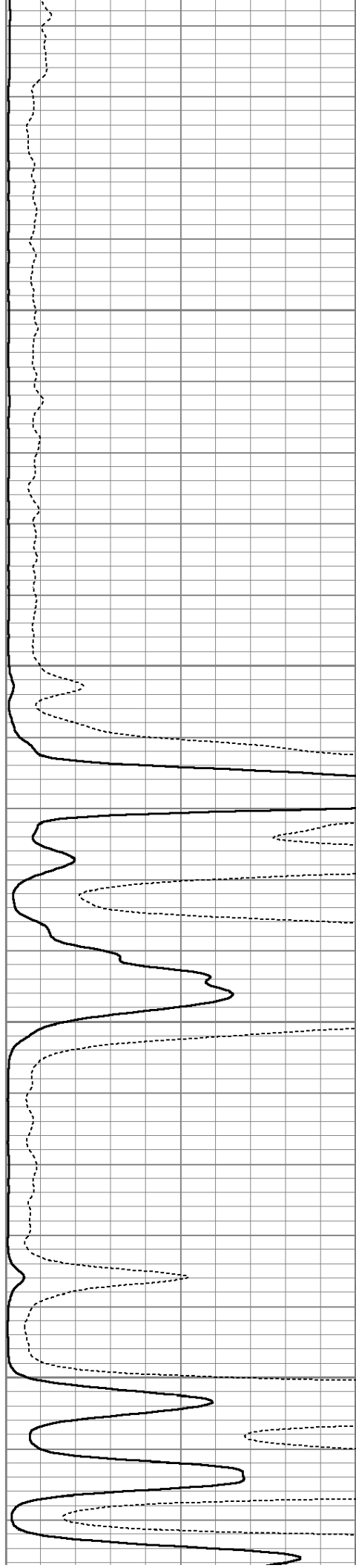


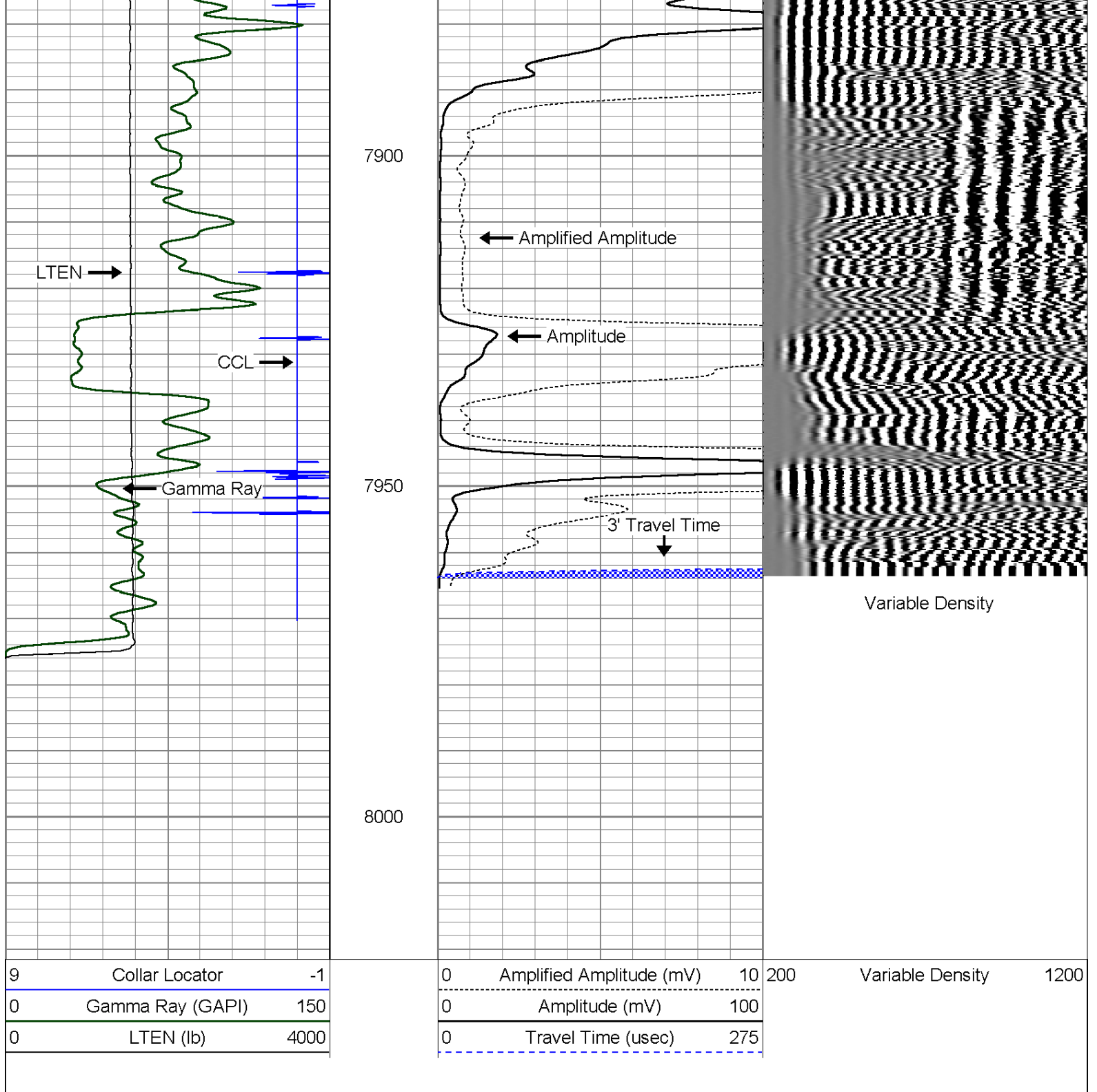
7700

7750

7800

7850





<div>Mesa Wireline LLC</div>	Company	ENCANA OIL & GAS INC. (USA)
	Well	RANCHERO #1
	Field	WATTENBURG
	County	WELD
	State	COLORADO