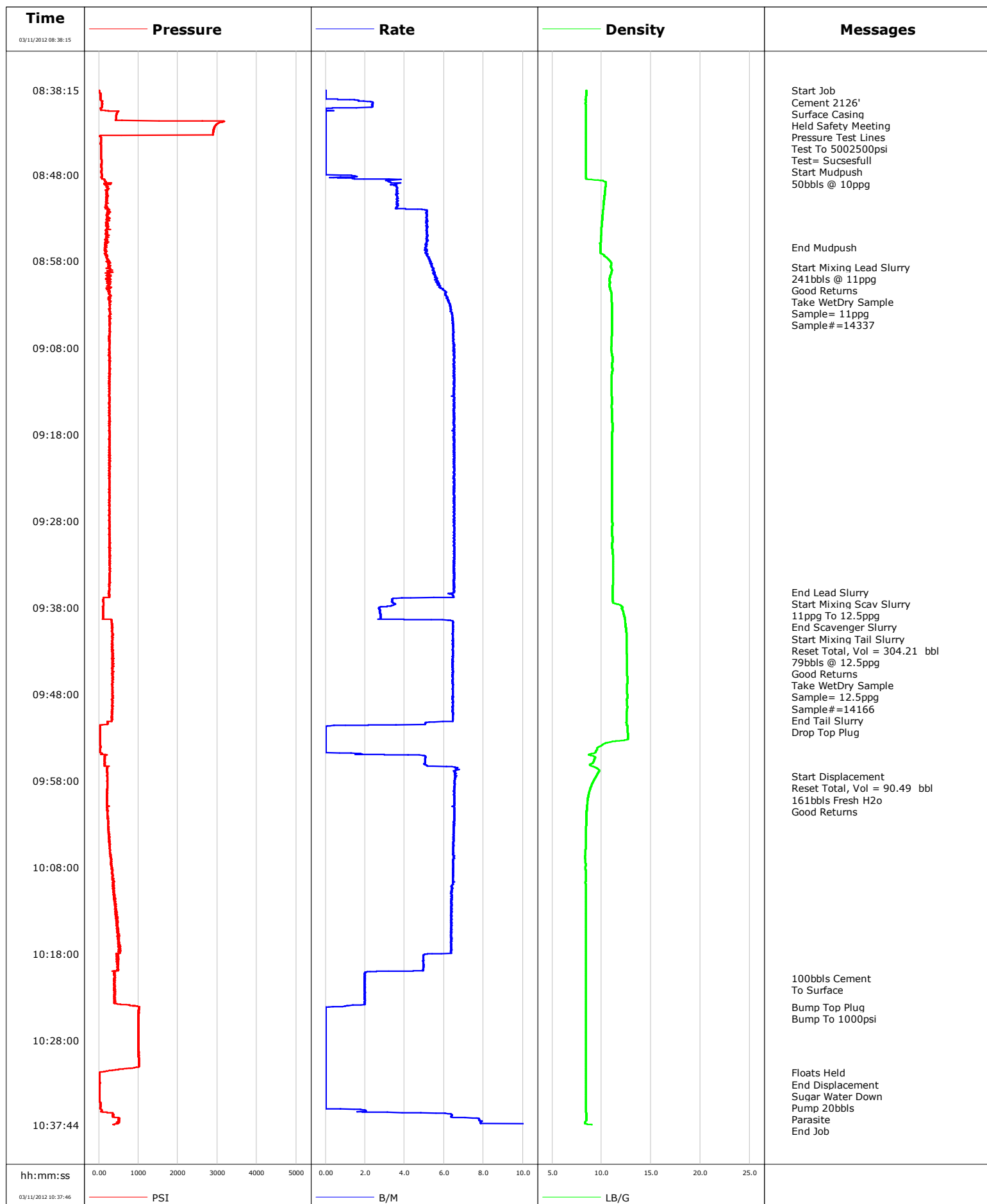


Well	SGU 8511E-22	Client	ENCANA
Field	STORY GULCH	SIR No.	BTXI-00300
Engineer		Job Type	SURFACE
Country	United States	Job Date	03-11-2012

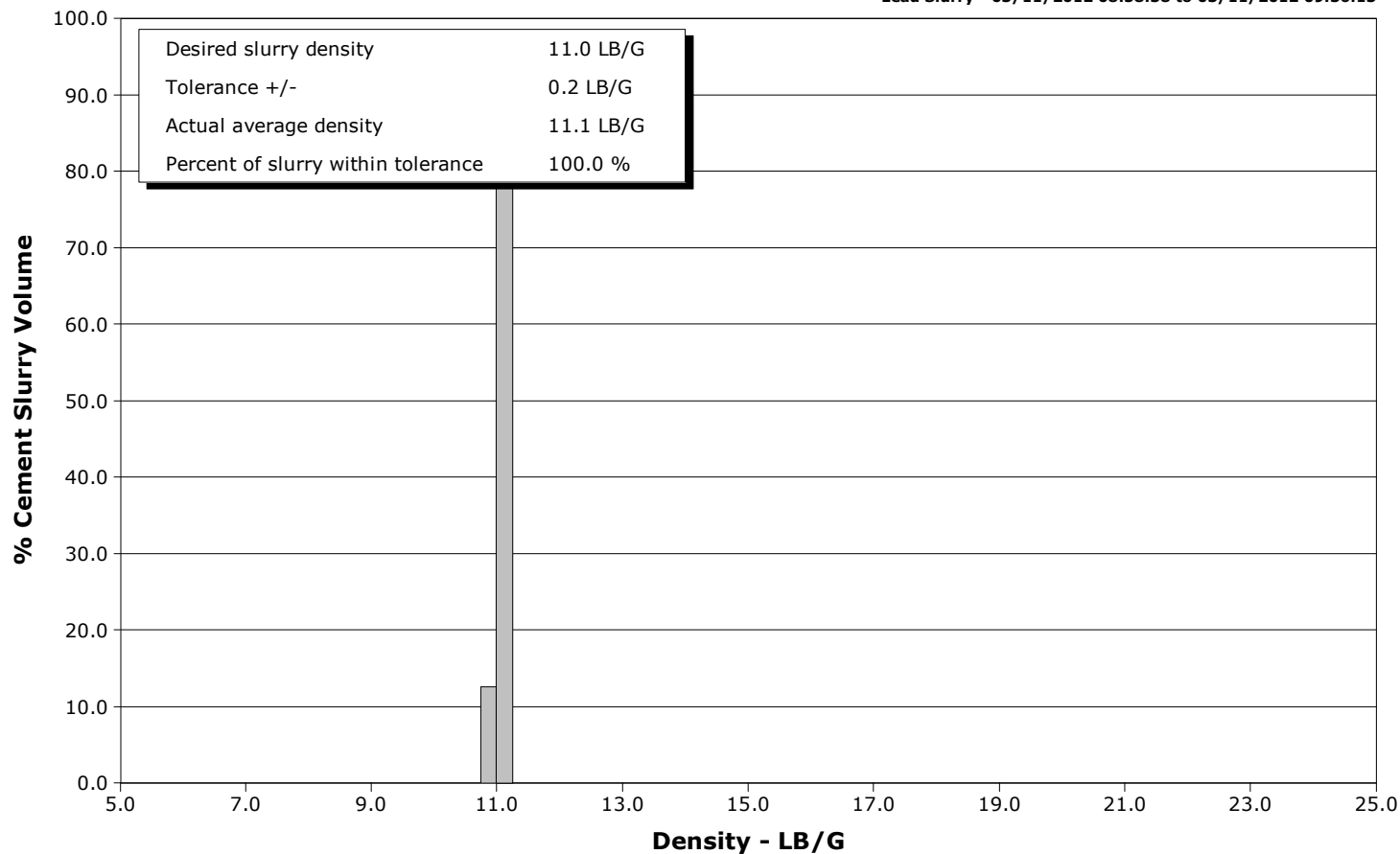


Schlumberger Cementing Qa/Qc Density Report

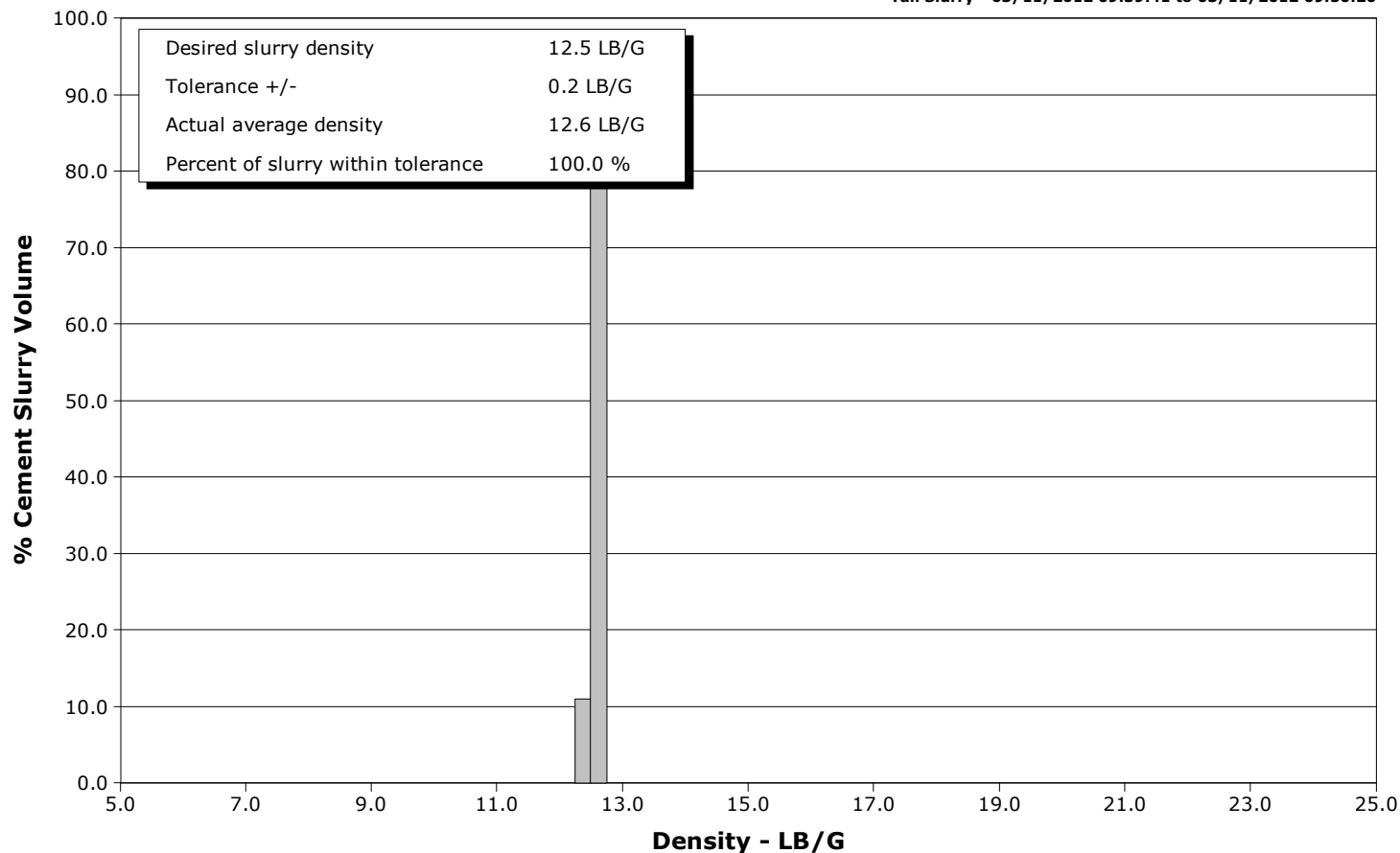
Well SGU 8511E-22
Field STORY GULCH
Engineer
Country United States

Client ENCANA
SIR No. BTXI-00300
Job Type SURFACE
Job Date 03-11-2012

Lead Slurry - 03/11/2012 08:58:38 to 03/11/2012 09:36:13



Tail Slurry - 03/11/2012 09:39:41 to 03/11/2012 09:50:20





Cementing Service Report

				Customer ENCANA			Job Number BTXI-00300								
Well SGU 8511E-22			Location (legal) PAREACHUTE			Schlumberger Location GCO			Job Start Mar/11/2012						
Field STORY GULCH		Formation Name/Type			Deviation		Bit Size 14.8 in		Well MD		Well TVD				
County GARFILED		State/Province Colorado			BHP		BHST		BHCT		Pore Press. Gradient				
Well Master 0631310465		API/UWI													
Rig Name PATTERSON 306		Drilled For Gas		Service Via Land		Casing/Liner									
Offshore Zone		Well Class New		Well Type Development		Depth, ft		Size, in		Weight, lb/ft		Grade		Thread	
						2126.0		9.630		36.0		J55		8RD	
Drilling Fluid Type		Max. Density		Plastic Viscosity		0.0		0.000		0.0					
Service Line Cementing		Job Type SURFACE				Tubing/Drill Pipe									
Max. Allowed Tub. Press		Max. Allowed Ann. Press		WH Connection Single Cement head		Depth,		Size,		Weight,		Grade		Thread	
Service Instructions 50bbls MP @ 10ppg 471sks 11ppg lead 2.87 ft3/sk 246sks 12.5ppg tail 1.81 ft3/sk WATER TEST = GOOD						Perforations/Open Hole									
						Top,		Bottom,				No. of Shots		Total Interval	
						Treat Down Casing		Displacement 161.0 bbl		Packer Type		Packer Depth			
						Tubing Vol.		Casing Vol. 164.0 bbl		Annular Vol. 258.0 bbl		Openhole Vol. 422.0 bbl			
Casing/Tubing Secured <input checked="" type="checkbox"/>		1 Hole Vol. Circulated prior to Cement <input checked="" type="checkbox"/>		Casing Tools				Squeeze Job							
Lift Pressure 1052 psi				Shoe Type Guide				Squeeze Type							
Pipe Rotated <input type="checkbox"/>		Pipe Reciprocated <input type="checkbox"/>		Shoe Depth 2126.0 ft				Tool Type							
No. Centralizers		Top Plugs 1		Bottom Plugs		Stage Tool Type				Tool Depth					
Cement Head Type Single				Stage Tool Depth				Tail Pipe Size							
Job Scheduled For Mar/11/2012		Arrived on Location Mar/11/2012		Leave Location Mar/11/2012		Collar Type Diff-Fill				Tail Pipe Depth					
						Collar Depth 2081.0 ft				Sqz. Total Vol.					
Date	Time 24-hr clock	Treating Pressure PSI	Flow Rate B/M	Density LB/G	Volume BBL	Message									
03/11/2012	08:02:20					Started Acquisition									
03/11/2012	08:38:15					Start Job									
03/11/2012	08:38:15	7	0.0	8.44	0.0										
03/11/2012	08:38:16					Cement 2126'									
03/11/2012	08:38:16					Surface Casing									
03/11/2012	08:38:16					Held Safety Meeting									
03/11/2012	08:38:16	7	0.0	8.44	0.0										
03/11/2012	08:38:20	7	0.0	8.44	0.0										
03/11/2012	08:38:31					Pressure Test Lines									
03/11/2012	08:38:31	5	0.0	8.44	0.0										
03/11/2012	08:38:33					Test To 5002500psi									
03/11/2012	08:38:33					Test= Succesfull									
03/11/2012	08:38:33	5	0.0	8.44	0.0										
03/11/2012	08:40:20	59	0.4	8.42	2.1										
03/11/2012	08:42:20	2951	0.0	8.42	2.2										
03/11/2012	08:44:20	49	0.0	8.42	2.2										
03/11/2012	08:45:35					Start Mudpush									
03/11/2012	08:45:35	57	0.0	8.42	2.2										
03/11/2012	08:45:45					50bbls @ 10ppg									
03/11/2012	08:45:45	57	0.0	8.42	2.2										
03/11/2012	08:46:20	62	0.0	8.42	2.2										

Well			Field		Job Start	Customer	Job Number
SGU 8511E-22			STORY GULCH		Mar/11/2012	ENCANA	BTXI-00300
Date	Time 24-hr clock	Treating Pressure PSI	Flow Rate B/M	Density LB/G	Volume BBL	Message	
03/11/2012	08:50:20	197	3.6	10.30	9.1		
03/11/2012	08:52:20	290	5.1	10.13	16.8		
03/11/2012	08:54:20	290	5.1	9.99	27.1		
03/11/2012	08:56:20	177	5.1	9.88	37.3		
03/11/2012	08:56:26					End Mudpush	
03/11/2012	08:56:26	186	5.1	9.88	37.8		
03/11/2012	08:58:20	243	5.4	10.96	47.7		
03/11/2012	08:58:38					Start Mixing Lead Slurry	
03/11/2012	08:58:38	250	5.4	10.93	49.3		
03/11/2012	08:58:40					241bbls @ 11ppg	
03/11/2012	08:58:40					Good Returns	
03/11/2012	08:58:40					Take WetDry Sample	
03/11/2012	08:58:40					Sample= 11ppg	
03/11/2012	08:58:40					Sample#=14337	
03/11/2012	08:58:40	233	5.4	10.93	49.5		
03/11/2012	09:00:20	206	5.7	10.83	58.7		
03/11/2012	09:02:20	256	6.2	11.00	70.5		
03/11/2012	09:04:20	272	6.4	11.05	83.2		
03/11/2012	09:06:20	280	6.5	11.06	96.1		
03/11/2012	09:08:20	273	6.5	10.98	109.0		
03/11/2012	09:10:20	275	6.5	11.08	122.0		
03/11/2012	09:12:20	264	6.5	11.00	135.0		
03/11/2012	09:14:20	255	6.5	11.03	148.0		
03/11/2012	09:16:20	265	6.5	11.07	161.0		
03/11/2012	09:18:20	264	6.5	11.07	174.0		
03/11/2012	09:20:20	264	6.5	11.07	186.9		
03/11/2012	09:22:20	264	6.5	11.05	199.9		
03/11/2012	09:24:20	277	6.5	11.06	212.9		
03/11/2012	09:26:20	268	6.5	11.07	225.9		
03/11/2012	09:28:20	266	6.5	11.09	238.9		
03/11/2012	09:30:20	268	6.5	11.09	251.9		
03/11/2012	09:32:20	282	6.5	11.15	264.9		
03/11/2012	09:34:20	263	6.5	11.13	277.9		
03/11/2012	09:36:13					End Lead Slurry	
03/11/2012	09:36:13	255	6.5	11.12	290.1		
03/11/2012	09:36:17					Start Mixing Scav Slurry	
03/11/2012	09:36:17	252	6.5	11.12	290.6		
03/11/2012	09:36:18					11ppg To 12.5ppg	
03/11/2012	09:36:18	263	6.5	11.12	290.7		
03/11/2012	09:36:20	278	6.5	11.11	290.9		
03/11/2012	09:38:20	105	2.8	12.12	299.0		
03/11/2012	09:39:38					End Scavenger Slurry	
03/11/2012	09:39:38	330	6.4	12.37	303.5		
03/11/2012	09:39:41					Start Mixing Tail Slurry	
03/11/2012	09:39:41	328	6.5	12.38	303.8		
03/11/2012	09:39:45					Reset Total, Vol = 304.21 bbl	
03/11/2012	09:39:45					79bbls @ 12.5ppg	
03/11/2012	09:39:45	329	6.5	12.39	304.2		
03/11/2012	09:39:46					Good Returns	
03/11/2012	09:39:46					Take WetDry Sample	
03/11/2012	09:39:46					Sample= 12.5ppg	
03/11/2012	09:39:46					Sample#=14166	
03/11/2012	09:39:46	329	6.5	12.39	304.3		
03/11/2012	09:40:20	330	6.4	12.46	308.0		

Well			Field		Job Start		Customer		Job Number	
SGU 8511E-22			STORY GULCH		Mar/11/2012		ENCANA		BTXI-00300	
Date	Time 24-hr clock	Treating Pressure PSI	Flow Rate B/M	Density LB/G	Volume BBL	Message				
03/11/2012	09:44:20	338	6.4	12.59	333.7					
03/11/2012	09:46:20	369	6.4	12.64	346.6					
03/11/2012	09:48:20	346	6.5	12.63	359.5					
03/11/2012	09:50:20					End Tail Slurry				
03/11/2012	09:50:20	335	6.4	12.51	372.3					
03/11/2012	09:50:35					Drop Top Plug				
03/11/2012	09:50:35	326	6.4	12.52	373.9					
03/11/2012	09:52:20	30	0.0	12.60	379.9					
03/11/2012	09:54:20	35	0.0	9.53	379.9					
03/11/2012	09:56:20	146	5.2	9.02	386.9					
03/11/2012	09:57:30					Start Displacement				
03/11/2012	09:57:30	221	6.6	9.45	394.5					
03/11/2012	09:57:32					Reset Total, Vol = 90.49 bbl				
03/11/2012	09:57:32	213	6.6	9.44	394.7					
03/11/2012	09:57:33					161bbls Fresh H2o				
03/11/2012	09:57:33					Good Returns				
03/11/2012	09:57:33	226	6.6	9.42	394.8					
03/11/2012	09:58:20	212	6.5	9.06	399.9					
03/11/2012	10:00:20	208	6.5	8.58	413.0					
03/11/2012	10:02:20	218	6.5	8.45	426.0					
03/11/2012	10:04:20	248	6.5	8.41	438.9					
03/11/2012	10:06:20	302	6.5	8.38	451.9					
03/11/2012	10:08:20	337	6.4	8.38	464.8					
03/11/2012	10:10:20	364	6.4	8.41	477.7					
03/11/2012	10:12:20	416	6.4	8.41	490.4					
03/11/2012	10:14:20	462	6.4	8.41	503.2					
03/11/2012	10:16:20	518	6.4	8.41	515.9					
03/11/2012	10:18:20	492	5.0	8.41	528.1					
03/11/2012	10:20:20	397	2.0	8.41	537.1					
03/11/2012	10:20:48					100bbls Cement				
03/11/2012	10:20:48					To Surface				
03/11/2012	10:20:48	391	2.0	8.41	538.0					
03/11/2012	10:22:20	389	2.0	8.41	541.0					
03/11/2012	10:24:07					Bump Top Plug				
03/11/2012	10:24:07	1022	0.4	8.41	544.4					
03/11/2012	10:24:09					Bump To 1000psi				
03/11/2012	10:24:09	1021	0.2	8.41	544.4					
03/11/2012	10:24:20	1011	0.0	8.41	544.4					
03/11/2012	10:26:20	1003	0.0	8.41	544.4					
03/11/2012	10:28:20	1004	0.0	8.41	544.4					
03/11/2012	10:30:20	1006	0.0	8.41	544.4					
03/11/2012	10:31:42					Floats Held				
03/11/2012	10:31:42	23	0.0	8.41	544.4					
03/11/2012	10:32:02					End Displacement				
03/11/2012	10:32:02	22	0.0	8.42	544.4					
03/11/2012	10:32:20	22	0.0	8.42	544.4					
03/11/2012	10:34:20	23	0.0	8.42	544.4					
03/11/2012	10:36:20	210	3.1	8.43	545.2					
03/11/2012	11:14:02					Sugar Water Down				
03/11/2012	11:14:03					Pump 20bbls				
03/11/2012	11:14:04					Parasite				

Well SGU 8511E-22	Field STORY GULCH	Job Start Mar/11/2012	Customer ENCANA	Job Number BTXI-00300
-----------------------------	-----------------------------	---------------------------------	---------------------------	---------------------------------

Post Job Summary

Average Pump Rates, bbl/min					Volume of Fluid Injected, bbl			
Slurry 5.8	N2	Mud 0.0	Maximum Rate 7.9	Total Slurry 553.9	Mud 0.0	Spacer 49.3	N2	
Treating Pressure Summary, psi					Breakdown Fluid			
Maximum 3178	Final 490	Average 341	Bump Plug to 1000	Breakdown	Type	Volume	Density	
Avg. N2 Percent		Designed Slurry Volume 422.0 bbl	Displacement 170.5 bbl	Mix Water Temp 58 degF	Cement Circulated to Surface? <input checked="" type="checkbox"/>	Volume 100.0 bbl		
					Washed Thru Perfs <input type="checkbox"/>	To		
Customer or Authorized Representative Robert Escojeda			Schlumberger Supervisor JASON CRICK			Circulation Lost <input type="checkbox"/>	Job Completed <input checked="" type="checkbox"/>	
					-		-	