



WELL INFORMATION					
MWD Run Number	100				
Date run completed	20-Jul-12				
Rig Bit Number	2				
Bit Size (in)	8.750				
Tool Nominal OD (in)	6.750				
Log Start Depth (TVD, ft)	702.00				
Log End Depth (TVD, ft)	6,719.34				
Drill or Wipe	Drill				
Drill/Wipe Start Date and Time	17-Jul-12 13:45				
Drill/Wipe End Date and Time	20-Jul-12 00:45				
Min Inc (deg) @ Depth (TVD, ft)	.22 @ 5,788.22				
Max Inc (deg) @ Depth (TVD, ft)	85.93 @ 6,716.15				
Bit TFA(in2) / Bit Type	.86 / PDC				
Flow Rate (gpm)	550.00				
Max AV (fpm) / CV (fpm) @ MWD	396.0 / NA				
Fluid Type	Fresh Water Gel				
Density (ppg) / Viscosity (spqt)	10.00 / 38.00				
Filtrate CL (ppm)	2,400.00				
pH / Fluid Loss (mptm)	9.40 / 74				
PV (cP) / YP (lhf2)	12 / 16.00				
% Solids / % Sand	8.90 / 0.30				
% Oil / Oil:Water Ratio	0 / 0:95				
Rm @ Measured Temp (degF)	NA @ NA				
Rmf @ Measured Temp (degF)	NA @ NA				
Rmc @ Measured Temp (degF)	NA @ NA				
Max Tool Temp (deg F) / S	107.07 / PDC				

Max Tool Temp (degF) / Source	167.97 / PCM				
Rm @ Max Tool Temp (degF)	NA @ NA				
Lead MWD Engineer	Brett Vandergon				
Customer Representative	Matt Settles				

## SENSOR INFORMATION

### Downhole Processor Information

Tool Type	PCM				
Software Version	5.76				
Sub Serial Number	11254819				
Insert Serial Number	10997265				
Date and Time Initialized	16-Jul-12 17:13				
Date and Time Read	20-Jul-12 09:34				
ECMB SW Version	N/A				

### Directional Sensor Information

Tool Type	PCDC				
Distance From Bit (ft)	54.00				
Software Version	6.21				
Sub Serial Number	11254819				
Sonde Serial Number	11062113				
Sensor ID Number	N/A				
Toolface Offset (deg)	236.25				

### Gamma Ray Sensor Information

Tool Type	PCG				
Distance From Bit (ft)	46.51				
Recorded Sample Period (sec)	10				
Software Version	8.15				
Sub Serial Number	11254819				
Insert/Sonde Serial Number	11121362				

## REMARKS

1. All depths are true vertical bit depths, referenced to the Driller's pipe tally and are measured from the Drill Floor, unless otherwise specified.
2. No depth corrections have been made for pipe stretch or compression.
3. Critical annual velocities are calculated using the "Power Law" model for water based fluids and the "Bingham Plastic" model for oil and synthetic based fluids.
4. All data presented is recorded data unless otherwise specified.
5. The following smoothing parameters have been applied to the data:  
PGRC (Corrected Gamma Ray):  
Interval Resolution: 0.5 ft  
Interval Distance: 0.6 ft  
Gap Fill: 3.0 ft  
ROPA (Average Rate of Penetration)  
Interval Resolution: 0.5 ft  
Interval Distance: 1.2 ft  
Gap Fill: 3.0 ft
6. INSITE version 7.3.40

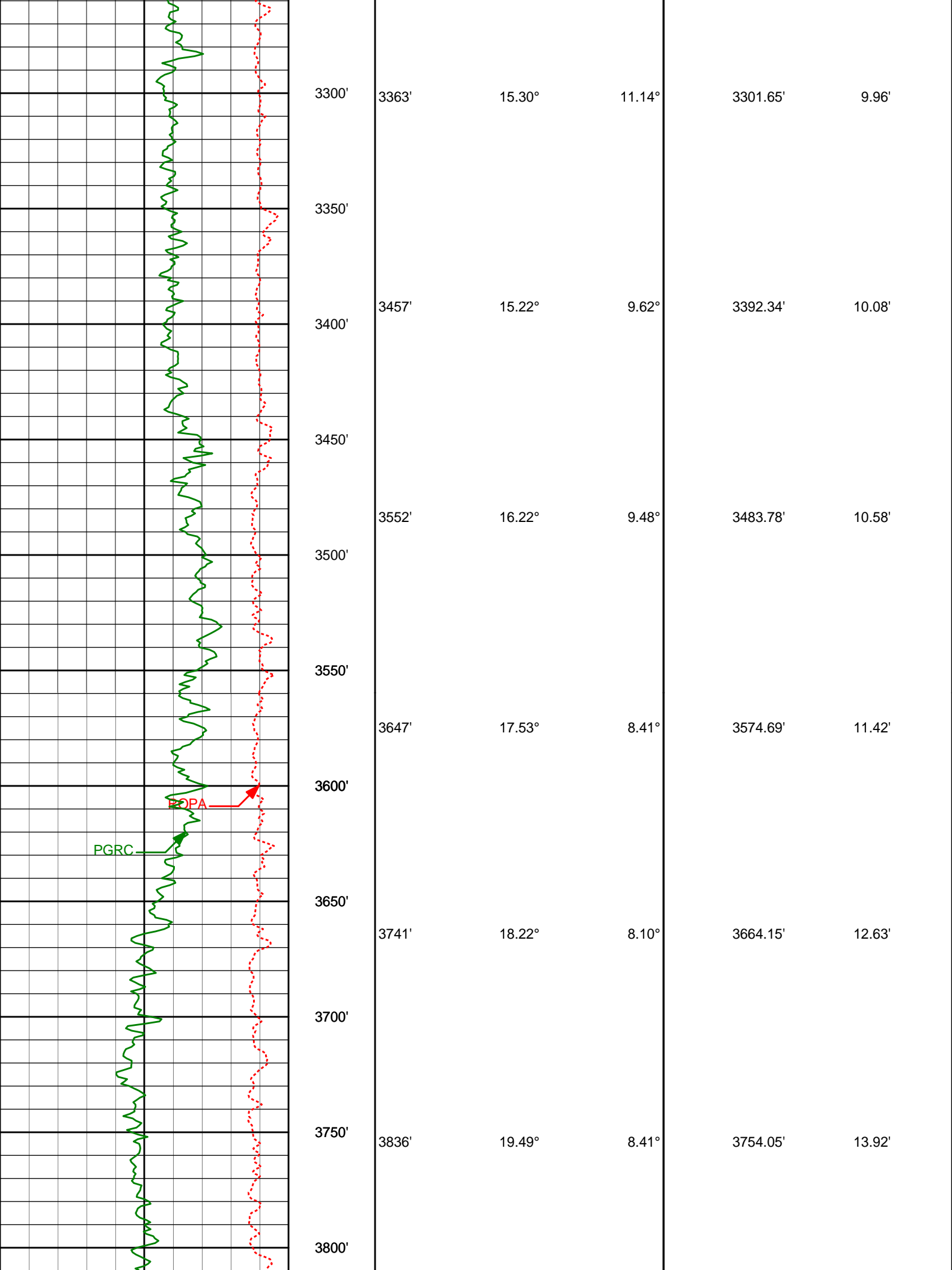
WARRANTY

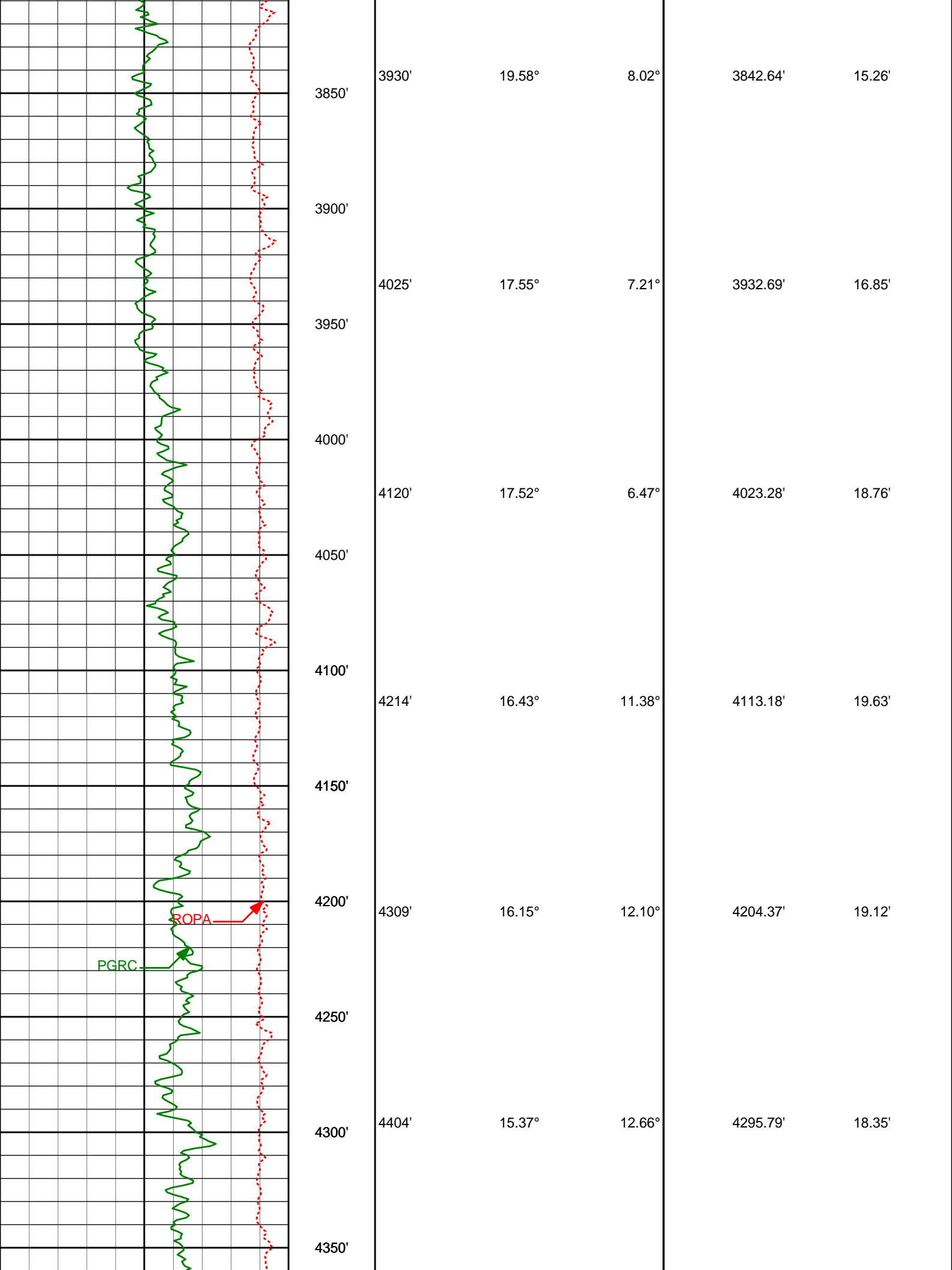
HALLIBURTON WILL USE ITS BEST EFFORTS TO FURNISH CUSTOMERS WITH ACCURATE INFORMATION AND INTERPRETATIONS THAT ARE PART OF, AND INCIDENT TO, THE SERVICES PROVIDED. HOWEVER, HALLIBURTON CANNOT AND DOES NOT WARRANT THE ACCURACY OR CORRECTNESS OF SUCH INFORMATION AND INTERPRETATIONS. UNDER NO CIRCUMSTANCES SHOULD ANY SUCH INFORMATION OR INTERPRETATION BE RELIED UPON AS THE SOLE BASIS FOR ANY DRILLING, COMPLETION, PRODUCTION, OR FINANCIAL DECISION OR ANY PROCEDURE INVOLVING ANY RISK TO THE SAFETY OF ANY DRILLING VENTURE, DRILLING RIG OR ITS CREW OR ANY OTHER THIRD PARTY. THE CUSTOMER HAS FULL RESPONSIBILITY FOR ALL DRILLING, COMPLETION AND PRODUCTION OPERATION. HALLIBURTON MAKES NO REPRESENTATIONS OR WARRANTIES, EITHER EXPRESSED OR IMPLIED, INCLUDING, BUT NOT LIMITED TO, THE IMPLIED WARRANTIES OF MERCHANTABILITY OR FITNESS FOR A PARTICULAR PURPOSE, WITH RESPECT TO THE SERVICES RENDERED. IN NO EVENT WILL HALLIBURTON BE LIABLE FOR FAILURE TO OBTAIN ANY PARTICULAR RESULTS OR FOR ANY DAMAGES, INCLUDING, BUT NOT LIMITED TO, INDIRECT, SPECIAL OR CONSEQUENTIAL DAMAGES, RESULTING FROM THE USE OF ANY INFORMATION OR INTERPRETATION PROVIDED BY HALLIBURTON.

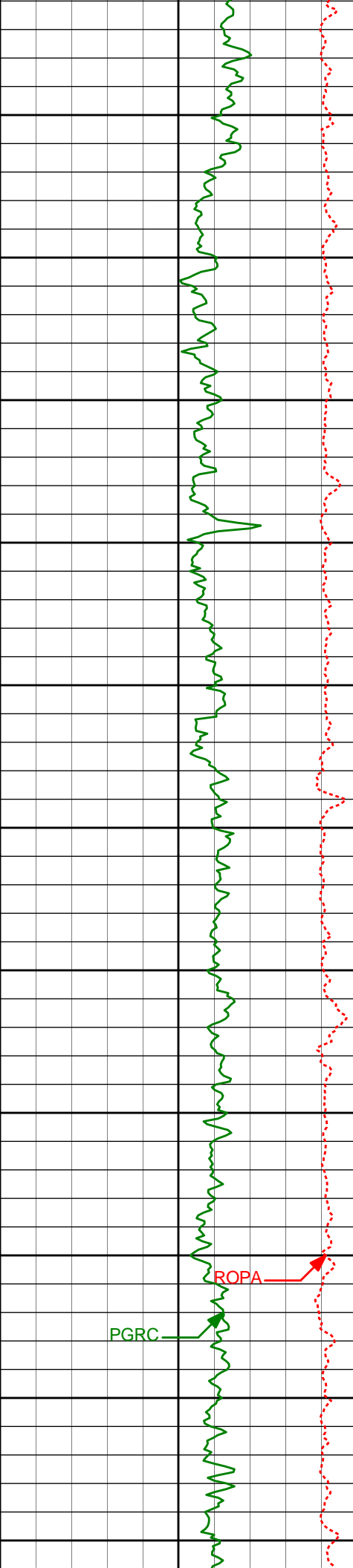
HALLIBURTON

TVD Main Log 1:600

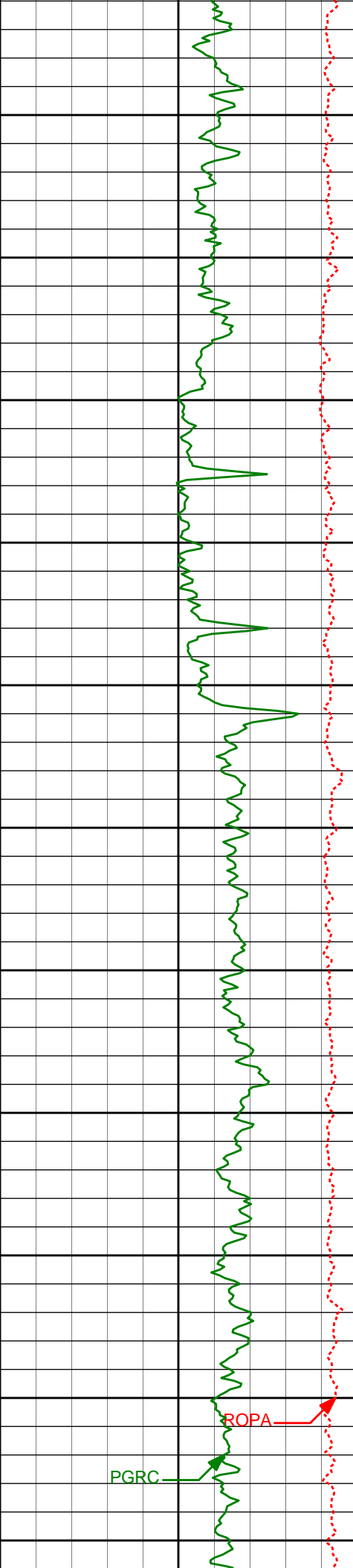
Average Rate of Penetration ROPA						
1K0						
feet per hr						
Gamma Ray PGRC		True Vertical Depth (ft)	Depth	Inc	Azi.	TVDV.S.
0200api		1:600				
		3000				
		3079'	16.66°	12.35°	3029.13'	12.20'
		3050'				
		3100'				
		3174'	17.18°	13.27°	3120.02'	11.17'
		3150'				
		3200'				
		3268'	15.85°	11.69°	3210.14'	10.30'
		3250'				







4400'	4498'	16.62°	11.22°	4386.15'	17.79'
4450'					
4500'	4593'	16.80°	11.32°	4477.14'	17.50'
4550'					
4600'	4688'	16.98°	10.79°	4568.04'	17.31'
4650'					
4700'	4782'	14.31°	5.56°	4658.55'	18.31'
4750'	4877'	12.41°	9.14°	4750.98'	19.62'
4800'					
4850'	4972'	8.09°	7.23°	4844.44'	20.29'
4900'					



4950'

5000'

5050'

5100'

5150'

5200'

5250'

5300'

5350'

5400'

5450'

5067'

5162'

5256'

5350'

5445'

5540'

7.13°

6.85°

4.32°

2.17°

1.08°

0.43°

4.69°

6.86°

9.78°

2.86°

55.09°

14.79°

4938.60'

5032.90'

5126.44'

5220.29'

5315.25'

5410.24'

21.31'

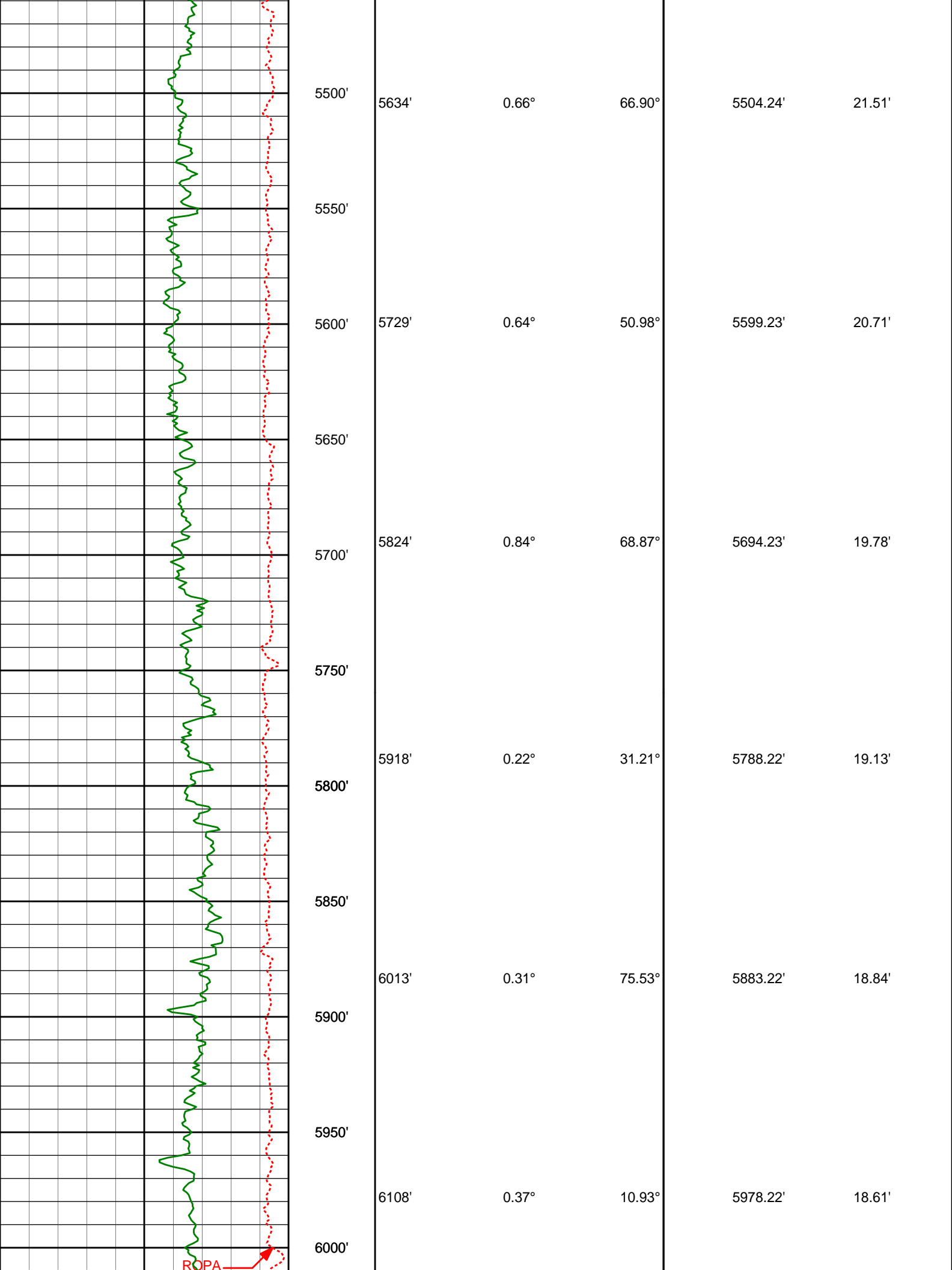
22.30'

22.72'

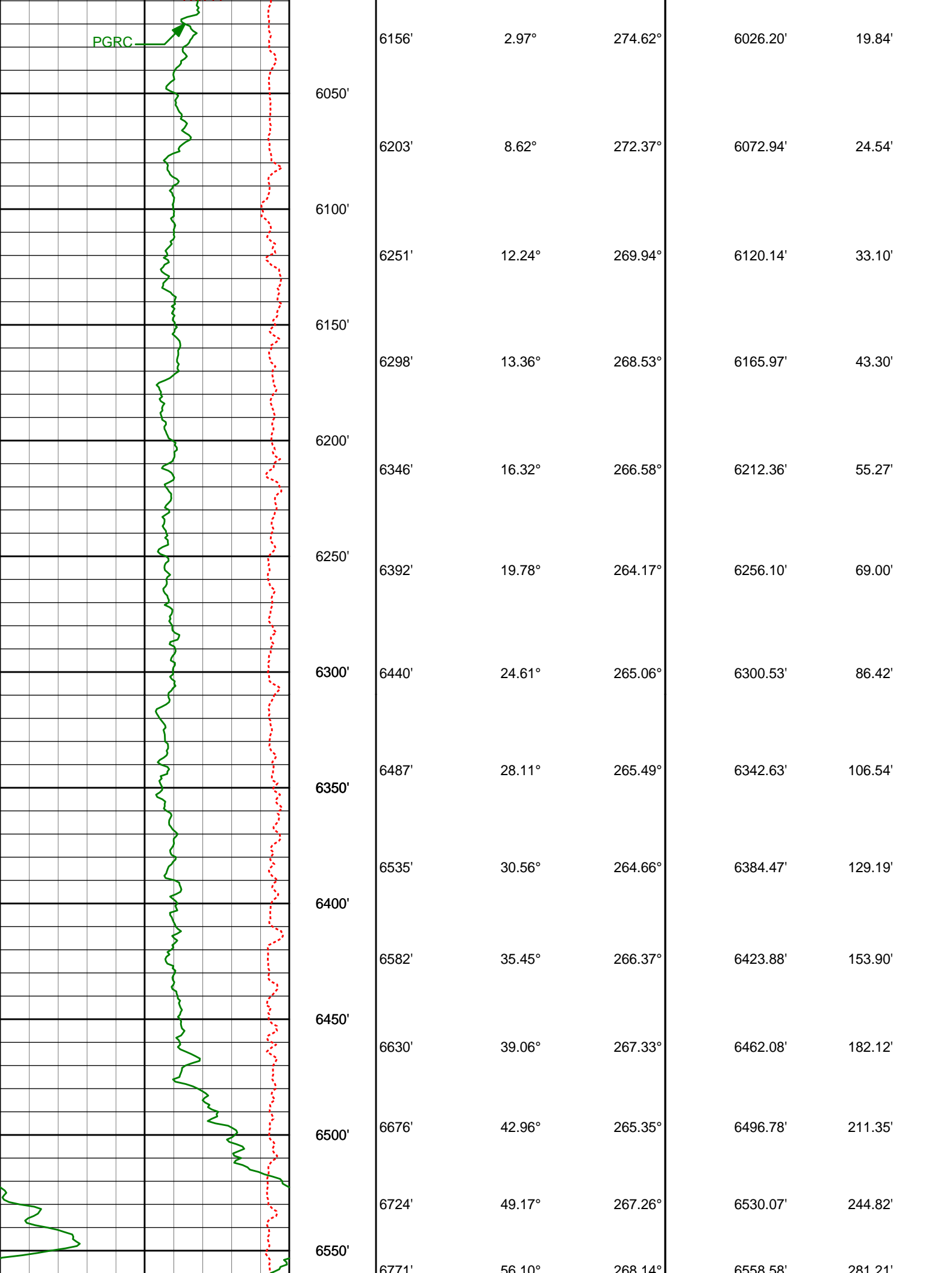
23.02'

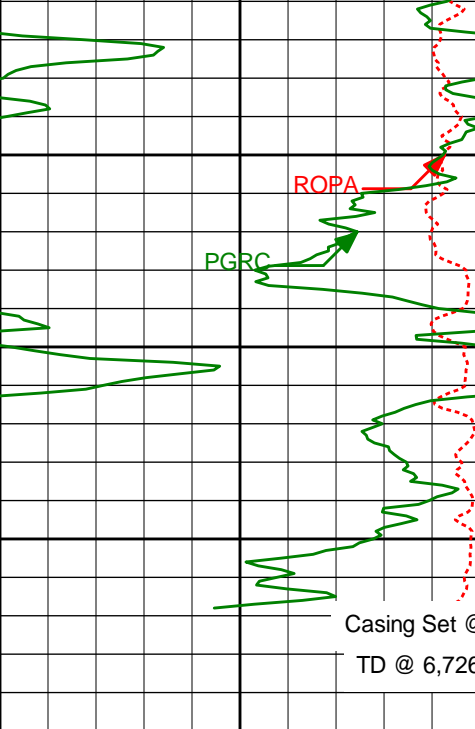
22.64'

21.99'









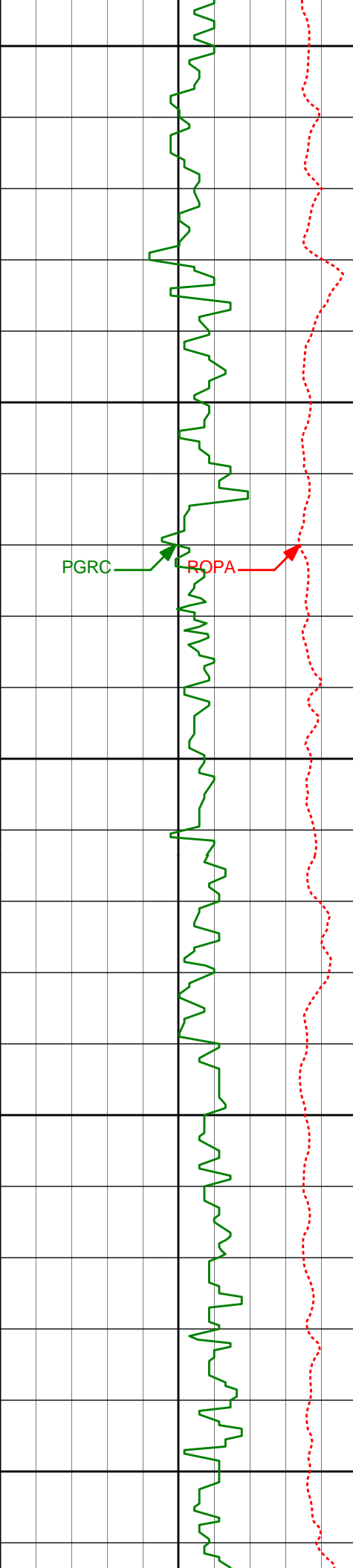
6777'	6819'	6865'	6913'	6960'	7008'	7055'	7103'	7149'	7197'
68.16°	61.52°	62.87°	63.67°	65.49°	68.19°	71.52°	74.24°	78.58°	83.82°
268.11°	269.59°	268.71°	268.41°	268.92°	269.15°	268.96°	269.10°	268.79°	268.82°
6583.43'	6583.43'	6604.89'	6626.49'	6646.66'	6665.54'	6681.72'	6695.85'	6706.66'	6714.00'
321.39'	321.39'	361.25'	403.17'	444.69'	487.91'	531.13'	576.06'	619.83'	666.23'

Gamma Ray PGRC 0 200 api	True Vertical Depth (ft) 1:600	Depth	Inc	Azi.	TVD	V.S.
Average Rate of Penetration ROPA 1K 0 feet per hr						

# HALLIBURTON

## TVD Main Log 1:240

Average Rate of Penetration ROPA 1K 0 feet per hr						
Gamma Ray PGRC 0 200 api	True Vertical Depth (ft) 1:240	Depth	Inc	Azi.	TVD	V.S.
		3079'	16.66°	12.35°	3029.13'	12.20'



3050'

3100'

3150'

3200'

3250'

PGRC

ROPA

3174'

17.18°

13.27°

3120.02'

11.17'

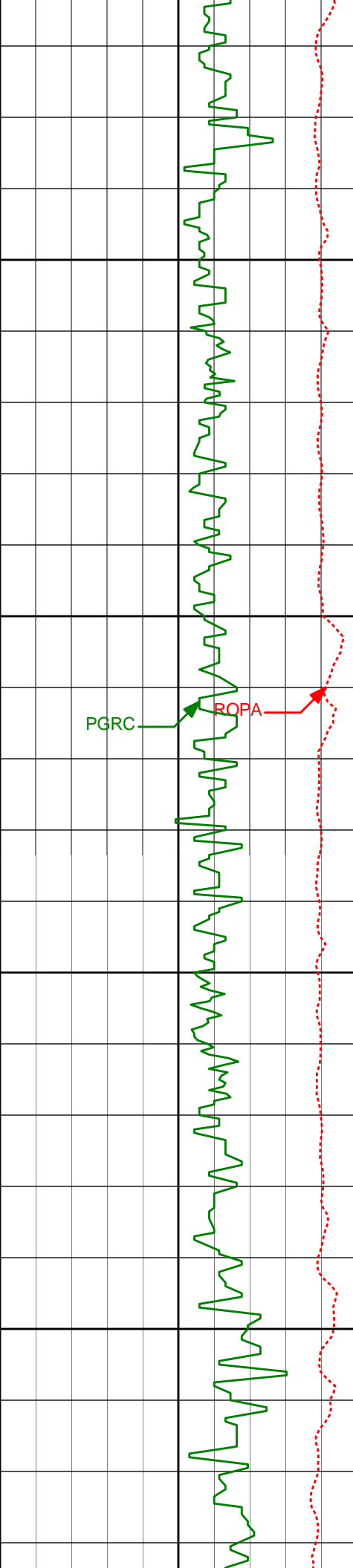
3268'

15.85°

11.69°

3210.14'

10.30'



3300'

3363'

15.30°

11.14°

3301.65'

9.96'

3350'

PGRC

ROPA

3400'

3457'

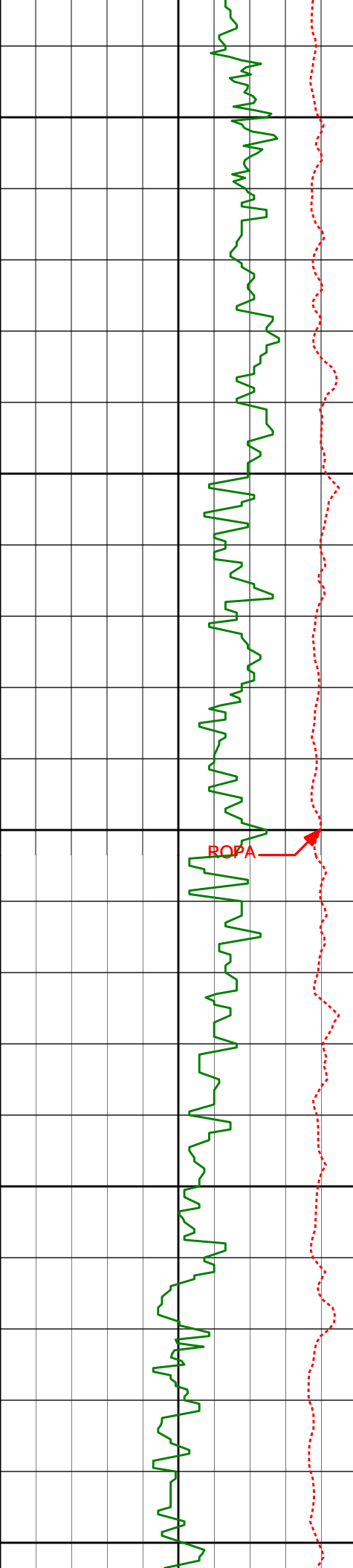
15.22°

9.62°

3392.34'

10.08'

3450'



3500'

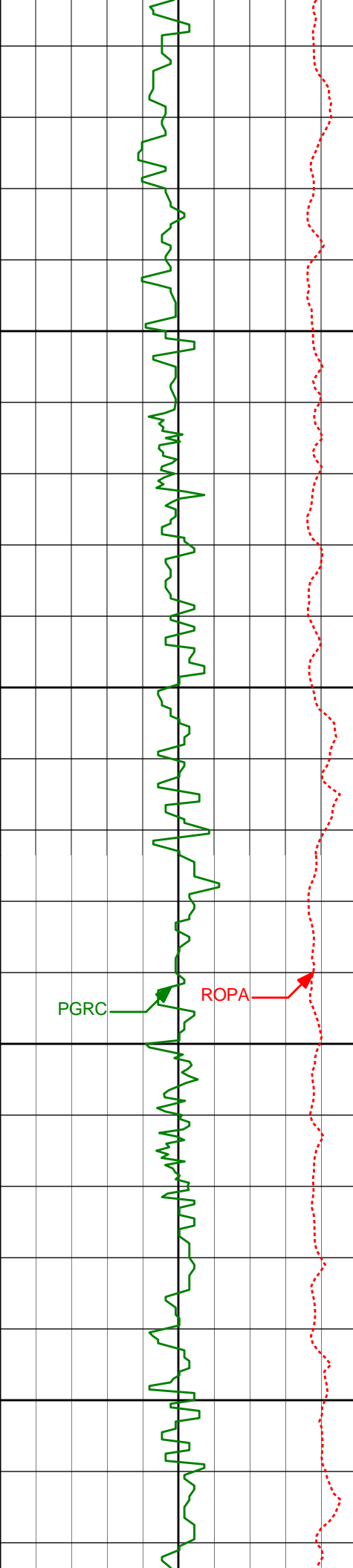
3550'

3600'

3650'

3700'

3552'	16.22°	9.48°	3463.78'	10.38'
3647'	17.53°	8.41°	3574.69'	11.42'
3741'	18.22°	8.10°	3664.15'	12.63'



3750'

3836'

19.49°

8.41°

3754.05'

13.92'

3800'

3850'

3900'

PGRC

ROPA

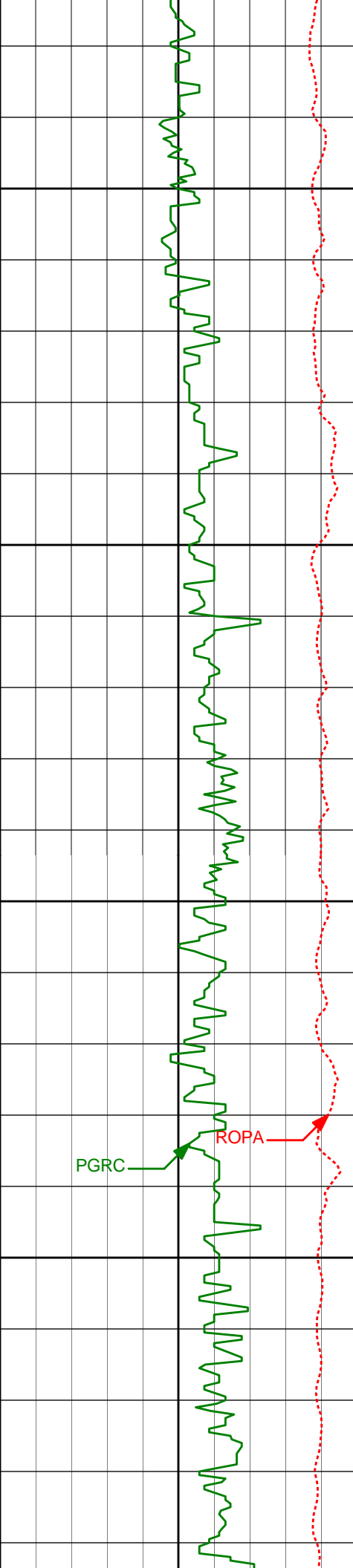
3930'

19.58°

8.02°

3842.64'

15.26'



3950'

4000'

4050'

4100'

4025'

17.55°

7.21°

3932.69'

16.85'

4120'

17.52°

6.47°

4023.28'

18.76'

PGRC

ROPA

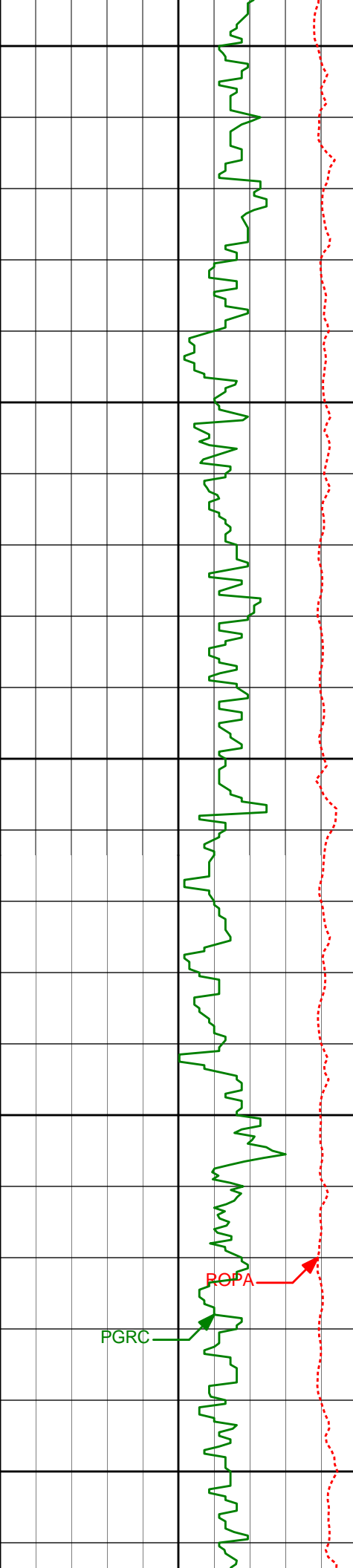
4214'

16.43°

11.38°

4113.18'

19.63'



4150'

4200'

4250'

4300'

4350'

4309'

16.15°

12.10°

4204.37'

19.12'

4404'

15.37°

12.66°

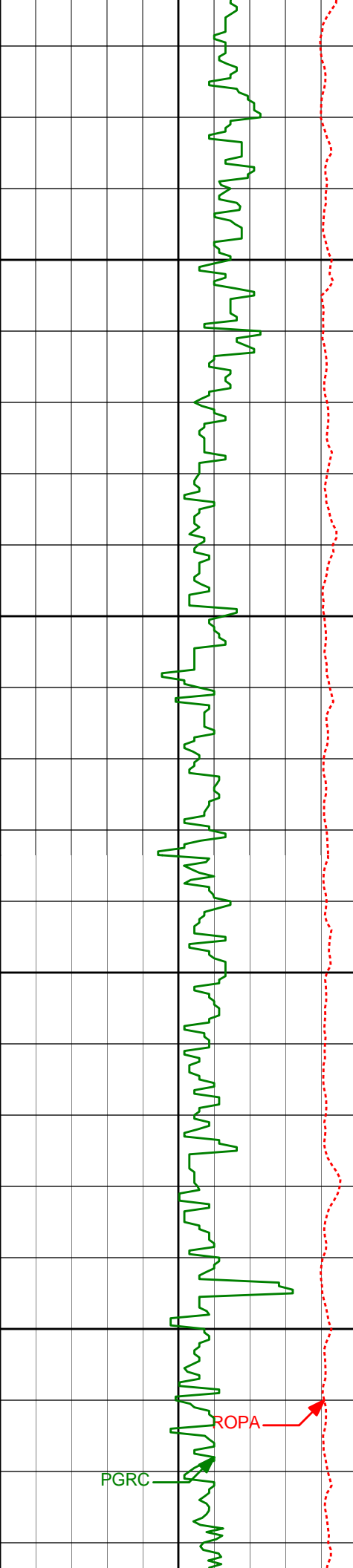
4295.79'

18.35'

POPA

PGRC





4400'

4450'

4500'

4550'

4498'

16.62°

11.22°

4386.15'

17.79'

4593'

16.80°

11.32°

4477.14'

17.50'

4688'

16.98°

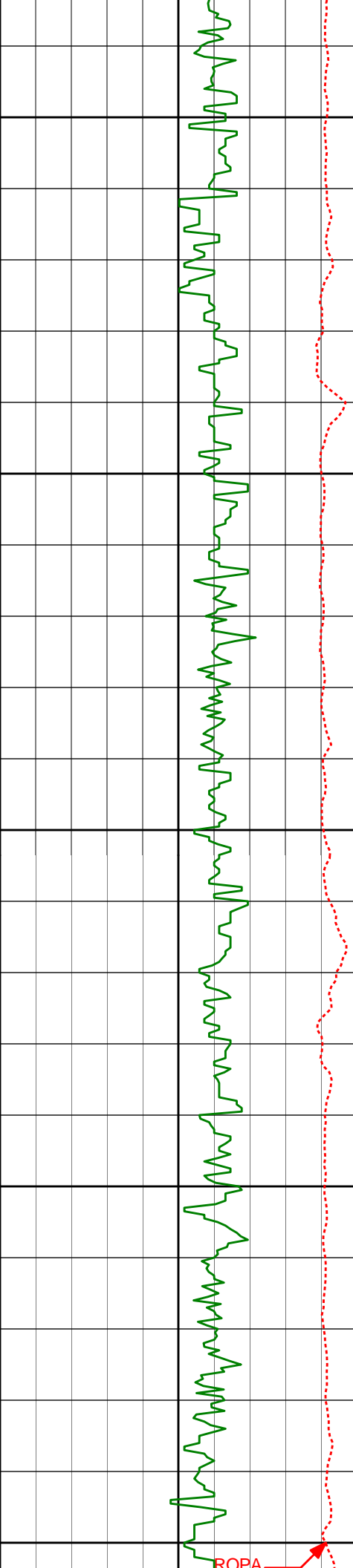
10.79°

4568.04'

17.31'

PGRC

ROPA



4600'

4650'

4700'

4750'

4800'

4782'

14.31°

5.56°

4658.55'

18.31'

4877'

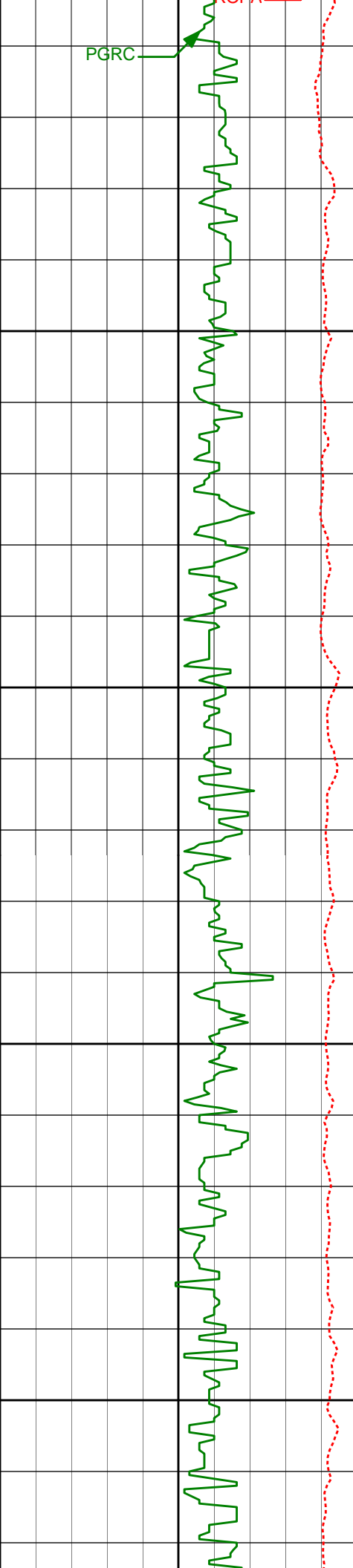
12.41°

9.14°

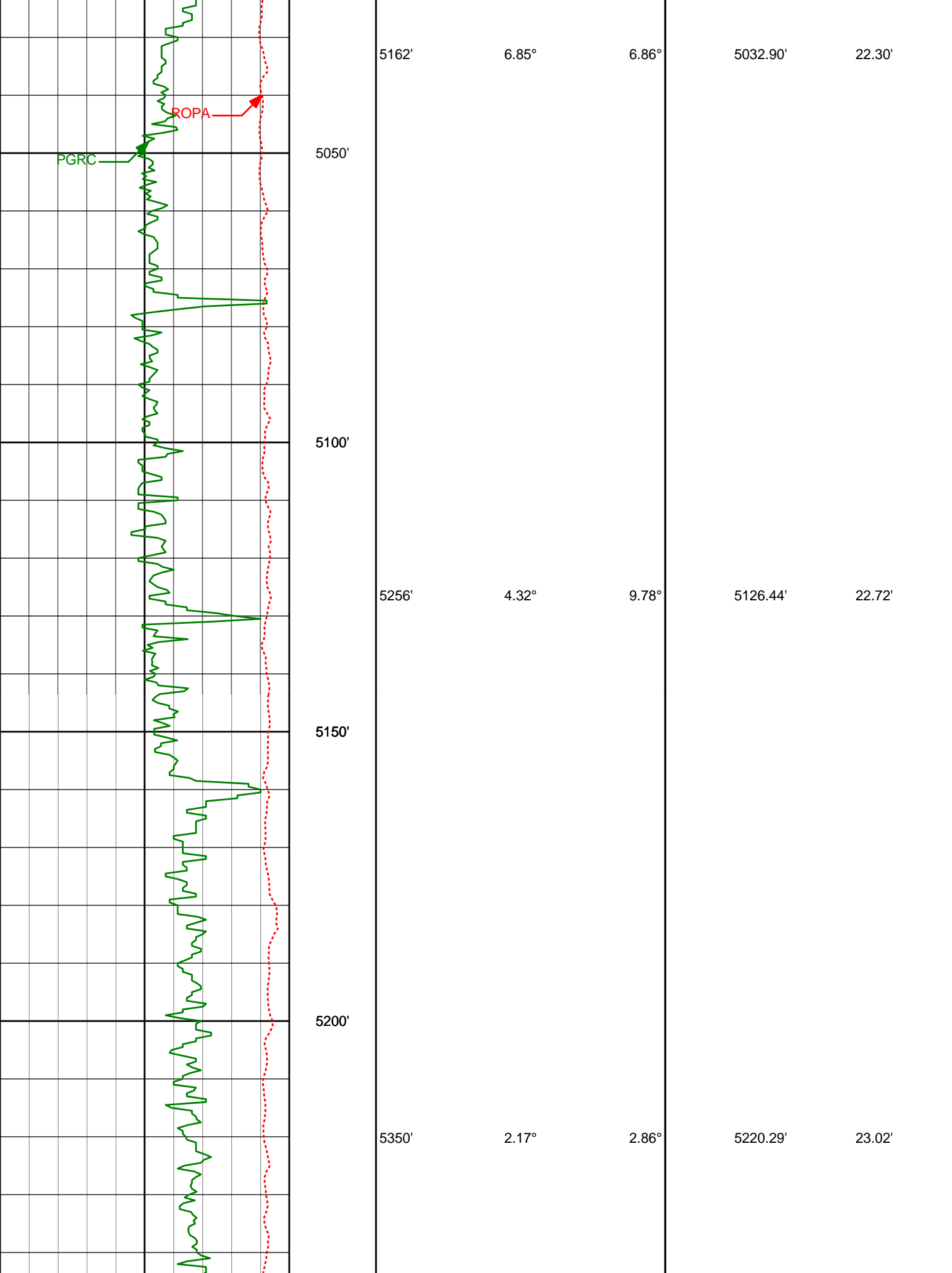
4750.98'

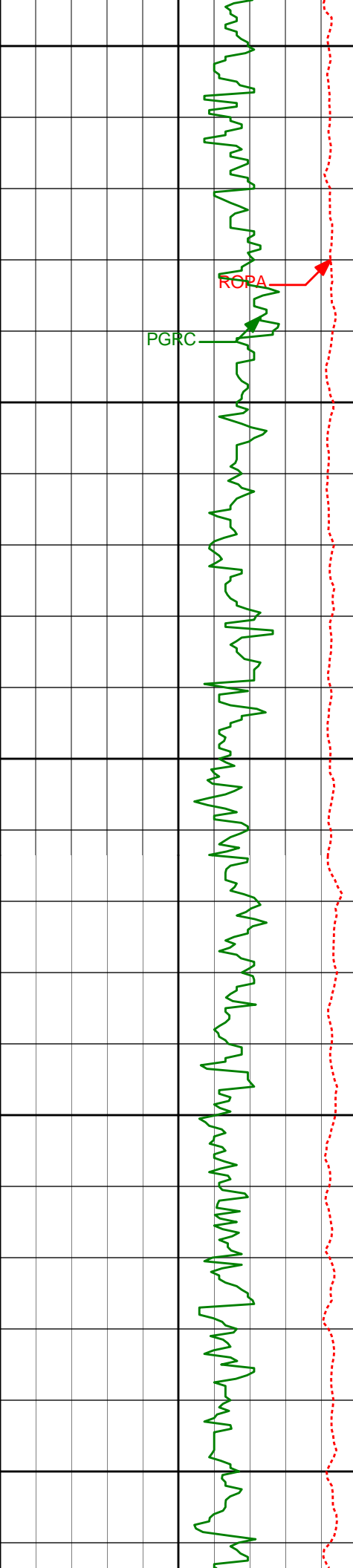
19.62'

ROPA



4972'	8.09°	7.23°	4844.44'	20.29'
5067'	7.13°	4.69°	4938.60'	21.31'





5250'

5300'

5350'

5400'

5450'

5445'

1.08°

55.09°

5315.25'

22.64'

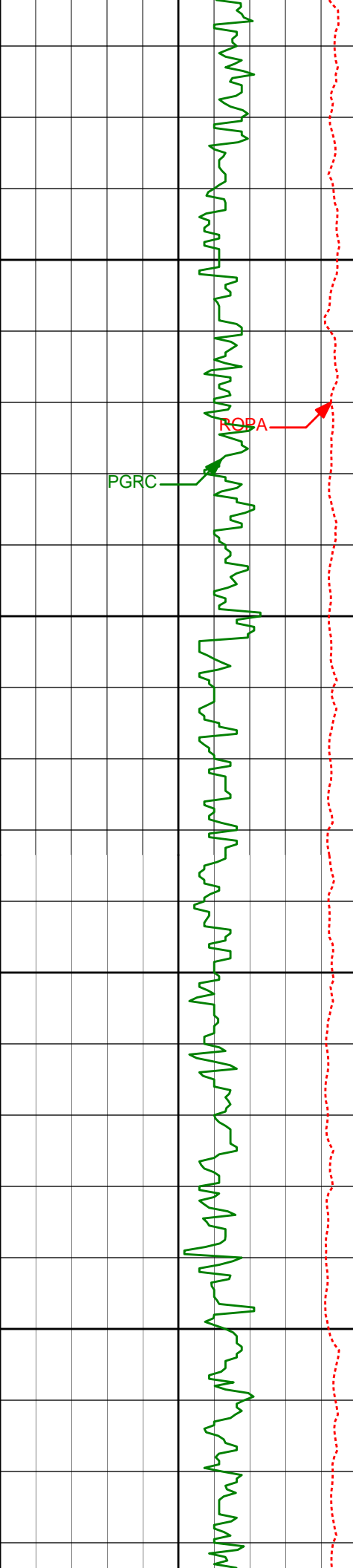
5540'

0.43°

14.79°

5410.24'

21.99'



5500'

5634'

0.66°

66.90°

5504.24'

21.51'

POPA

PGRC

5550'

5600'

5729'

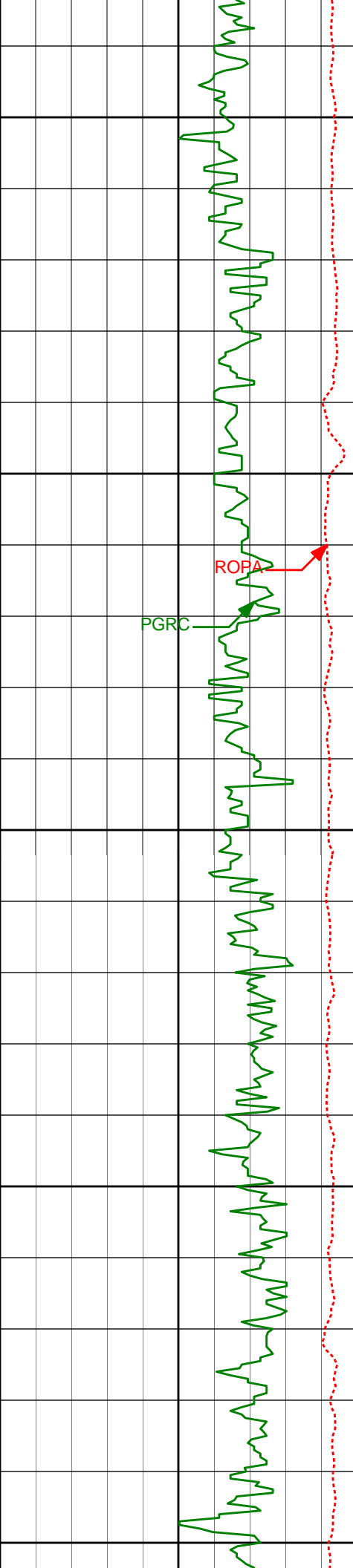
0.64°

50.98°

5599.23'

20.71'

5650'



5700'

5750'

5800'

5850'

5900'

PGRC

ROPA

5824'

0.84°

68.87°

5694.23'

19.78'

5918'

0.22°

31.21°

5788.22'

19.13'

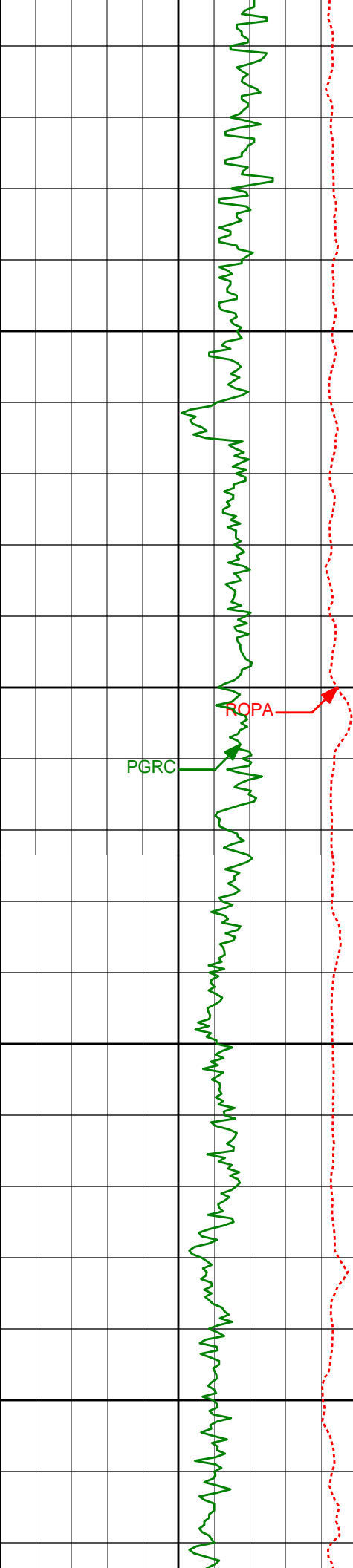
6013'

0.31°

75.53°

5883.22'

18.84'



5950'

6108'

0.37°

10.93°

5978.22'

18.61'

6000'

PGRC

ROPA

6156'

2.97°

274.62°

6026.20'

19.84'

6050'

6203'

8.62°

272.37°

6072.94'

24.54'

6100'

6251'

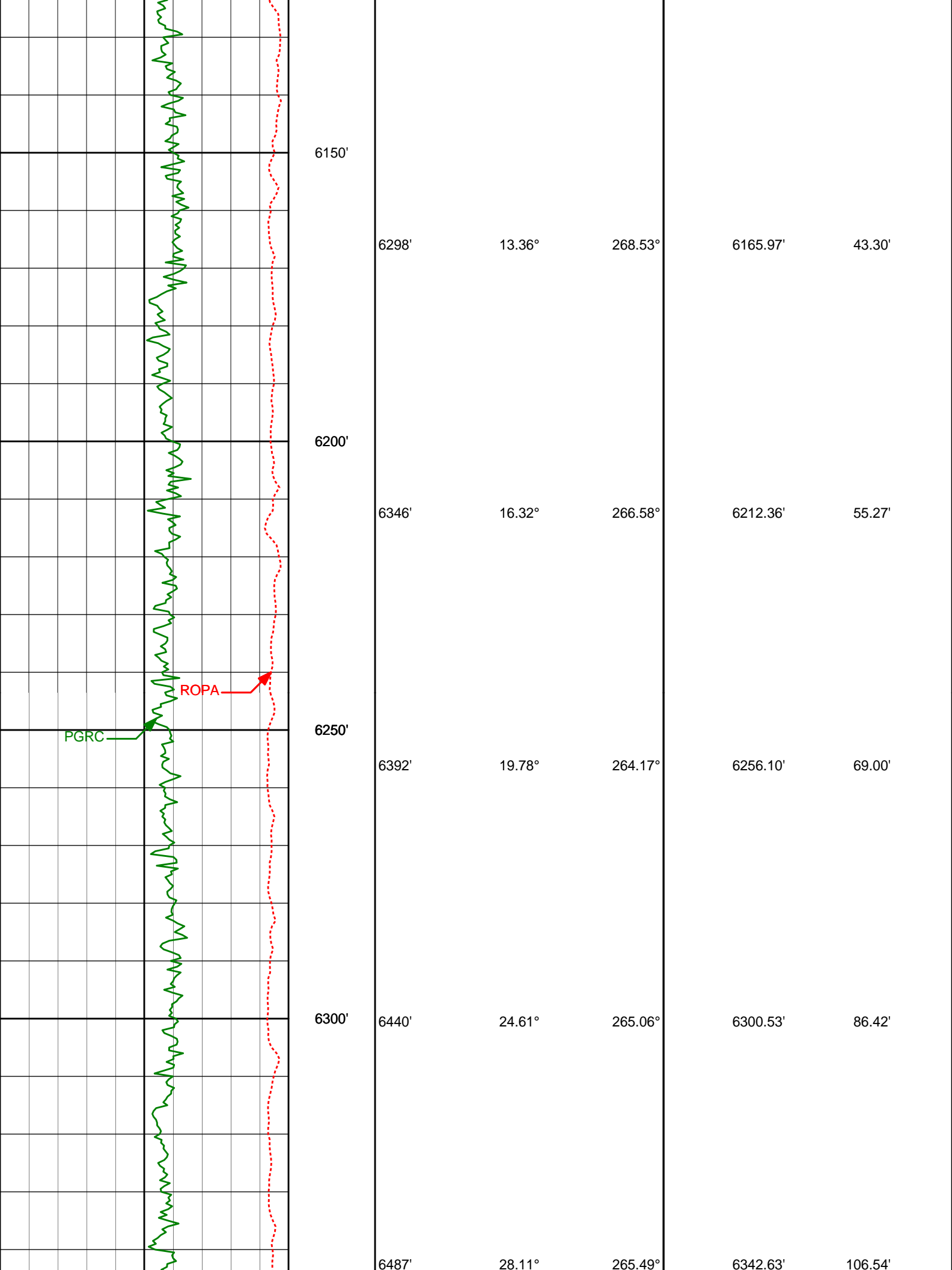
12.24°

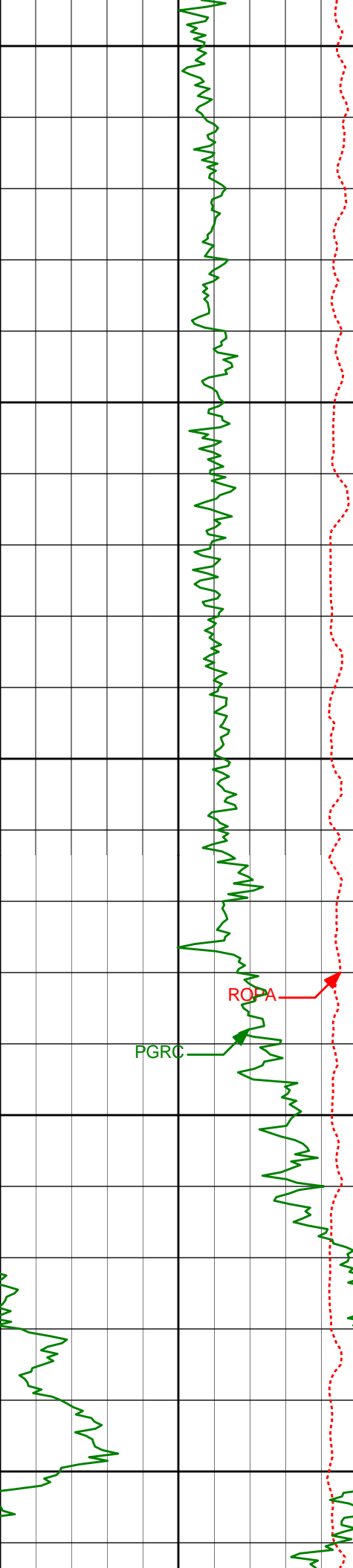
269.94°

6120.14'

33.10'







6350'

6535'

30.56°

264.66°

6384.47'

129.19'

6400'

6582'

35.45°

266.37°

6423.88'

153.90'

6450'

6630'

39.06°

267.33°

6462.08'

182.12'

ROPA

PGRC

6500'

6676'

42.96°

265.35°

6496.78'

211.35'

6724'

49.17°

267.26°

6530.07'

244.82'

6550'

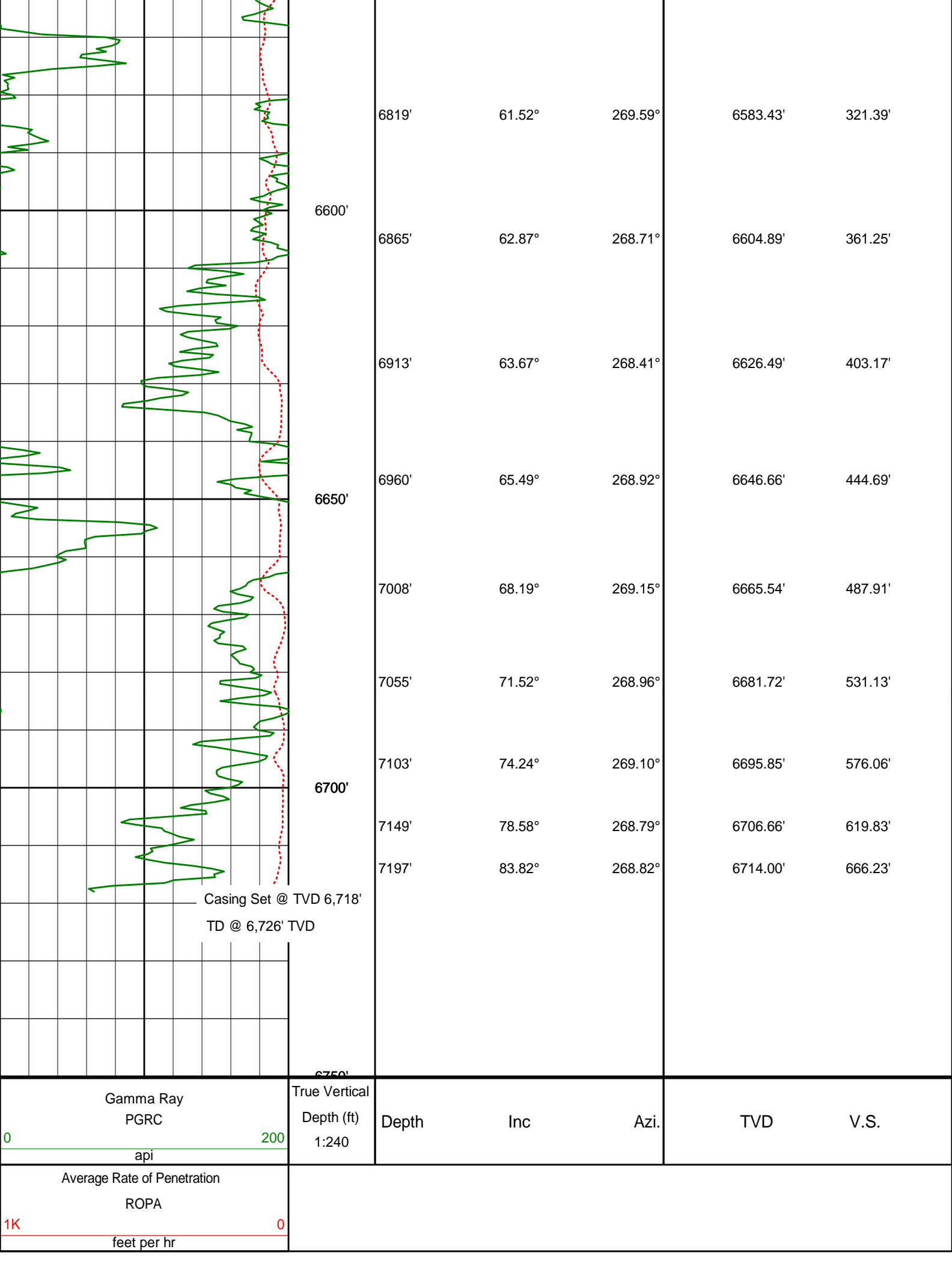
6771'

56.10°

268.14°

6558.58'

281.21'





# HALLIBURTON

## DIRECTIONAL SURVEY REPORT

Noble Energy  
Wells Ranch AE06-69-1HN  
Wattenburg  
Weld Colorado  
U.S.A.  
CA-XX-0009518814

<i>Measured Depth (feet)</i>	<i>Inclination (degrees)</i>	<i>Direction (degrees)</i>	<i>Vertical Depth (feet)</i>	<i>Latitude (feet)</i>	<i>Departure (feet)</i>	<i>Vertical Section (feet)</i>	<i>Dogleg (deg/100ft)</i>
0.00	0.00	0.00	0.00	0.00 N	0.00 E	0.00	TIE-IN
692.00	0.00	0.00	692.00	0.00 N	0.00 E	0.00	0.00
733.00	1.12	329.34	733.00	0.34 N	0.20 W	0.26	2.72
828.00	0.62	3.78	827.99	1.65 N	0.64 W	0.94	0.74
923.00	1.43	320.99	922.97	3.09 N	1.35 W	1.90	1.11
1112.00	1.34	312.27	1111.92	6.40 N	4.46 W	5.57	0.12
1205.00	1.69	325.88	1204.88	8.26 N	6.04 W	7.46	0.54
1297.00	1.96	334.30	1296.84	10.81 N	7.48 W	9.35	0.42
1482.00	2.43	12.82	1481.71	17.49 N	7.98 W	11.08	0.82
1666.00	3.61	19.12	1665.45	26.78 N	5.22 W	10.08	0.67
1758.00	5.00	12.28	1757.19	33.43 N	3.42 W	9.54	1.61
1850.00	6.33	12.98	1848.74	42.30 N	1.42 W	9.22	1.45
1942.00	7.16	14.28	1940.10	52.80 N	1.13 E	8.66	0.91
2034.00	8.75	13.47	2031.21	65.16 N	4.17 E	7.95	1.73
2133.00	11.39	6.94	2128.68	82.19 N	7.11 E	8.22	2.91
2228.00	14.98	9.12	2221.16	103.63 N	10.19 E	9.16	3.81
2322.00	18.12	8.96	2311.26	130.07 N	14.39 E	9.91	3.34
2416.00	19.04	8.44	2400.36	159.68 N	18.92 E	10.94	0.99
2511.00	19.27	6.94	2490.10	190.56 N	23.09 E	12.56	0.57
2606.00	18.87	8.20	2579.89	221.33 N	27.18 E	14.23	0.60
2701.00	18.89	12.56	2669.78	251.55 N	32.71 E	14.38	1.48
2795.00	19.10	12.42	2758.66	281.43 N	39.33 E	13.41	0.23
2890.00	17.49	11.18	2848.85	310.62 N	45.44 E	12.80	1.74
2984.00	17.87	10.79	2938.41	338.64 N	50.88 E	12.64	0.42
3079.00	16.66	12.35	3029.13	366.26 N	56.52 E	12.20	1.37
3174.00	17.18	13.27	3120.02	393.22 N	62.65 E	11.17	0.62
3268.00	15.85	11.69	3210.14	419.30 N	68.44 E	10.30	1.50
3363.00	15.30	11.14	3301.65	444.30 N	73.49 E	9.96	0.60
3457.00	15.22	9.62	3392.34	468.63 N	77.95 E	10.08	0.43
3552.00	16.22	9.48	3483.78	494.02 N	82.22 E	10.58	1.05
3647.00	17.53	8.41	3574.69	521.26 N	86.50 E	11.42	1.41
3741.00	18.22	8.10	3664.15	549.82 N	90.64 E	12.63	0.74
3836.00	19.49	8.41	3754.05	580.21 N	95.05 E	13.92	1.34
3930.00	19.58	8.02	3842.64	611.32 N	99.54 E	15.26	0.17
4025.00	17.55	7.21	3932.69	641.29 N	103.56 E	16.85	2.16
4120.00	17.52	6.47	4023.28	669.71 N	106.97 E	18.76	0.23
4214.00	16.43	11.38	4113.18	696.81 N	111.19 E	19.63	1.91
4309.00	16.15	12.10	4204.37	722.90 N	116.61 E	19.12	0.36
4404.00	15.37	12.66	4295.79	748.11 N	122.14 E	18.35	0.84
4498.00	16.62	11.22	4386.15	773.46 N	127.49 E	17.79	1.40
4593.00	16.80	11.32	4477.14	800.25 N	132.83 E	17.50	0.19
4688.00	16.98	10.79	4568.04	827.35 N	138.12 E	17.31	0.25
4782.00	14.31	5.56	4658.55	852.40 N	141.82 E	18.31	3.21
4877.00	12.41	9.14	4750.98	874.17 N	144.58 E	19.62	2.18
4972.00	8.09	7.23	4844.44	890.89 N	147.04 E	20.29	4.56
5067.00	7.13	4.69	4938.60	903.40 N	148.36 E	21.31	1.07
5162.00	6.85	6.86	5032.90	914.90 N	149.52 E	22.30	0.41
5256.00	4.32	9.78	5126.44	923.95 N	150.79 E	22.72	2.70
5350.00	2.17	2.86	5220.29	929.22 N	151.48 E	23.02	2.32
5445.00	1.08	55.09	5315.25	931.53 N	152.30 E	22.64	1.83
5540.00	0.43	14.79	5410.24	932.38 N	153.13 E	21.99	0.84
5634.00	0.66	66.90	5504.24	932.94 N	153.72 E	21.51	0.56
5729.00	0.64	50.98	5599.23	933.49 N	154.63 E	20.71	0.19
5824.00	0.84	68.87	5694.23	934.07 N	155.69 E	19.78	0.32
5918.00	0.22	31.21	5788.22	934.47 N	156.43 E	19.13	0.72

6013.00	0.31	75.53	5883.22	934.69 N	156.77 E	18.84	0.22
6108.00	0.37	10.93	5978.22	935.06 N	157.07 E	18.61	0.38
6156.00	2.97	274.62	6026.20	935.31 N	155.86 E	19.84	6.31
6203.00	8.62	272.37	6072.94	935.56 N	151.13 E	24.54	12.03
6251.00	12.24	269.94	6120.14	935.70 N	142.44 E	33.10	7.59
6298.00	13.36	268.53	6165.97	935.56 N	132.04 E	43.30	2.48
6346.00	16.32	266.58	6212.36	935.01 N	119.76 E	55.27	6.26
6392.00	19.78	264.17	6256.10	933.83 N	105.56 E	69.00	7.69
6440.00	24.61	265.06	6300.53	932.15 N	87.51 E	86.42	10.09
6487.00	28.11	265.49	6342.63	930.43 N	66.72 E	106.54	7.47
6535.00	30.56	264.66	6384.47	928.41 N	43.29 E	129.19	5.16
6582.00	35.45	266.37	6423.88	926.43 N	17.78 E	153.90	10.60
6630.00	39.06	267.33	6462.08	924.85 N	11.23 W	182.12	7.62
6676.00	42.96	265.35	6496.78	922.90 N	41.35 W	211.35	8.94
6724.00	49.17	267.26	6530.07	920.70 N	75.82 W	244.82	13.24
6771.00	56.10	268.14	6558.58	919.21 N	113.12 W	281.21	14.82
6819.00	61.52	269.59	6583.43	918.42 N	154.16 W	321.39	11.58
6865.00	62.87	268.71	6604.89	917.81 N	194.84 W	361.25	3.38
6913.00	63.67	268.41	6626.49	916.73 N	237.69 W	403.17	1.77
6960.00	65.49	268.92	6646.66	915.75 N	280.13 W	444.69	4.00
7008.00	68.19	269.15	6665.54	915.01 N	324.25 W	487.91	5.63
7055.00	71.52	268.96	6681.72	914.28 N	368.36 W	531.13	7.10
7103.00	74.24	269.10	6695.85	913.50 N	414.23 W	576.06	5.67
7149.00	78.58	268.79	6706.66	912.68 N	458.92 W	619.83	9.46
7197.00	83.82	268.82	6714.00	911.70 N	506.33 W	666.23	10.92
7221.00	85.93	268.47	6716.15	911.13 N	530.22 W	689.61	8.92
7335.00	88.80	268.08	6721.39	907.71 N	644.04 W	800.83	2.54
7382.00	89.04	267.49	6722.28	905.90 N	690.99 W	846.64	1.36
7477.00	87.56	267.97	6725.09	902.13 N	785.88 W	939.19	1.64
7572.00	87.66	267.73	6729.05	898.57 N	880.73 W	1031.74	0.27
7667.00	90.43	269.41	6730.63	896.20 N	975.67 W	1124.61	3.42
7762.00	90.56	272.85	6729.81	898.07 N	1070.63 W	1218.28	3.62
7856.00	91.29	276.74	6728.30	905.93 N	1164.27 W	1311.76	4.22
7951.00	88.86	273.78	6728.17	914.64 N	1258.86 W	1406.32	4.04
8046.00	88.64	272.35	6730.24	919.72 N	1353.70 W	1500.46	1.53
8141.00	89.88	274.35	6731.47	925.26 N	1448.52 W	1594.68	2.48
8236.00	90.06	276.02	6731.52	933.85 N	1543.13 W	1689.24	1.77
8331.00	90.06	276.56	6731.42	944.25 N	1637.55 W	1783.96	0.57
8426.00	90.68	278.57	6730.81	956.76 N	1731.72 W	1878.82	2.22
8521.00	90.52	275.97	6729.81	968.79 N	1825.94 W	1973.64	2.74
8616.00	89.85	272.55	6729.50	975.85 N	1920.66 W	2068.03	3.67
8712.00	90.31	269.64	6729.38	977.68 N	2016.64 W	2162.69	3.07
8807.00	90.28	267.97	6728.89	975.70 N	2111.61 W	2255.65	1.76
8902.00	88.67	267.44	6729.76	971.89 N	2206.53 W	2348.23	1.78
8997.00	87.69	266.49	6732.77	966.86 N	2301.34 W	2440.48	1.44
9090.00	87.68	266.65	6736.52	961.30 N	2394.10 W	2530.61	0.18
9185.00	90.00	267.18	6738.44	956.19 N	2488.94 W	2622.86	2.50
9280.00	89.63	266.45	6738.75	950.92 N	2583.79 W	2715.10	0.86
9375.00	89.44	265.12	6739.52	943.94 N	2678.53 W	2806.91	1.41
9470.00	90.52	264.00	6739.55	934.94 N	2773.10 W	2898.18	1.64
9565.00	90.03	263.14	6739.09	924.30 N	2867.50 W	2988.99	1.04
9660.00	88.83	262.12	6740.03	912.12 N	2961.71 W	3079.32	1.66
9755.00	89.54	261.33	6741.39	898.44 N	3055.70 W	3169.16	1.12
9850.00	89.05	262.51	6742.56	885.09 N	3149.75 W	3259.12	1.35
9945.00	88.77	264.30	6744.37	874.18 N	3244.10 W	3349.82	1.91
10039.00	91.76	266.84	6743.95	866.93 N	3337.80 W	3440.56	4.17
10134.00	92.81	266.16	6740.16	861.13 N	3432.55 W	3532.60	1.32
10229.00	92.87	265.91	6735.46	854.57 N	3527.20 W	3624.41	0.27
10324.00	87.13	265.68	6735.46	847.61 N	3621.91 W	3716.20	6.04
10419.00	88.24	265.05	6739.30	839.94 N	3716.52 W	3807.75	1.35
10514.00	88.83	263.59	6741.73	830.54 N	3811.02 W	3898.88	1.65
10608.00	91.48	263.21	6741.47	819.75 N	3904.39 W	3988.64	2.85
10703.00	89.81	264.12	6740.40	809.27 N	3998.80 W	4079.49	2.00
10798.00	90.62	270.05	6740.04	804.44 N	4093.63 W	4171.79	6.30
10893.00	92.68	273.80	6737.31	807.63 N	4188.52 W	4265.63	4.50
10987.00	92.31	272.26	6733.21	812.59 N	4282.29 W	4358.70	1.68
11083.00	91.32	271.05	6730.17	815.37 N	4378.20 W	4453.47	1.63
11140.00	91.98	270.35	6728.53	816.06 N	4435.17 W	4509.59	1.67
11200.00	91.98	270.35	6726.46	816.43 N	4495.14 W	4568.58	0.01

CALCULATION BASED ON MINIMUM CURVATURE METHOD

SURVEY COORDINATES RELATIVE TO WELL SYSTEM REFERENCE POINT

TVD VALUES GIVEN RELATIVE TO DRILLING MEASUREMENT POINT

VD VALUES GIVEN RELATIVE TO DRILLING MEASUREMENT POINT

VERTICAL SECTION RELATIVE TO WELL HEAD  
VERTICAL SECTION IS COMPUTED ALONG A DIRECTION OF 280.66 DEGREES (GRID)  
A TOTAL CORRECTION OF 7.76 DEG FROM MAGNETIC NORTH TO GRID NORTH HAS BEEN APPLIED

HORIZONTAL DISPLACEMENT IS RELATIVE TO THE WELL HEAD.  
HORIZONTAL DISPLACEMENT(CLOSURE) AT 11200.00 FEET  
IS 4568.68 FEET ALONG 280.29 DEGREES (GRID)

Date Printed:23 July 2012