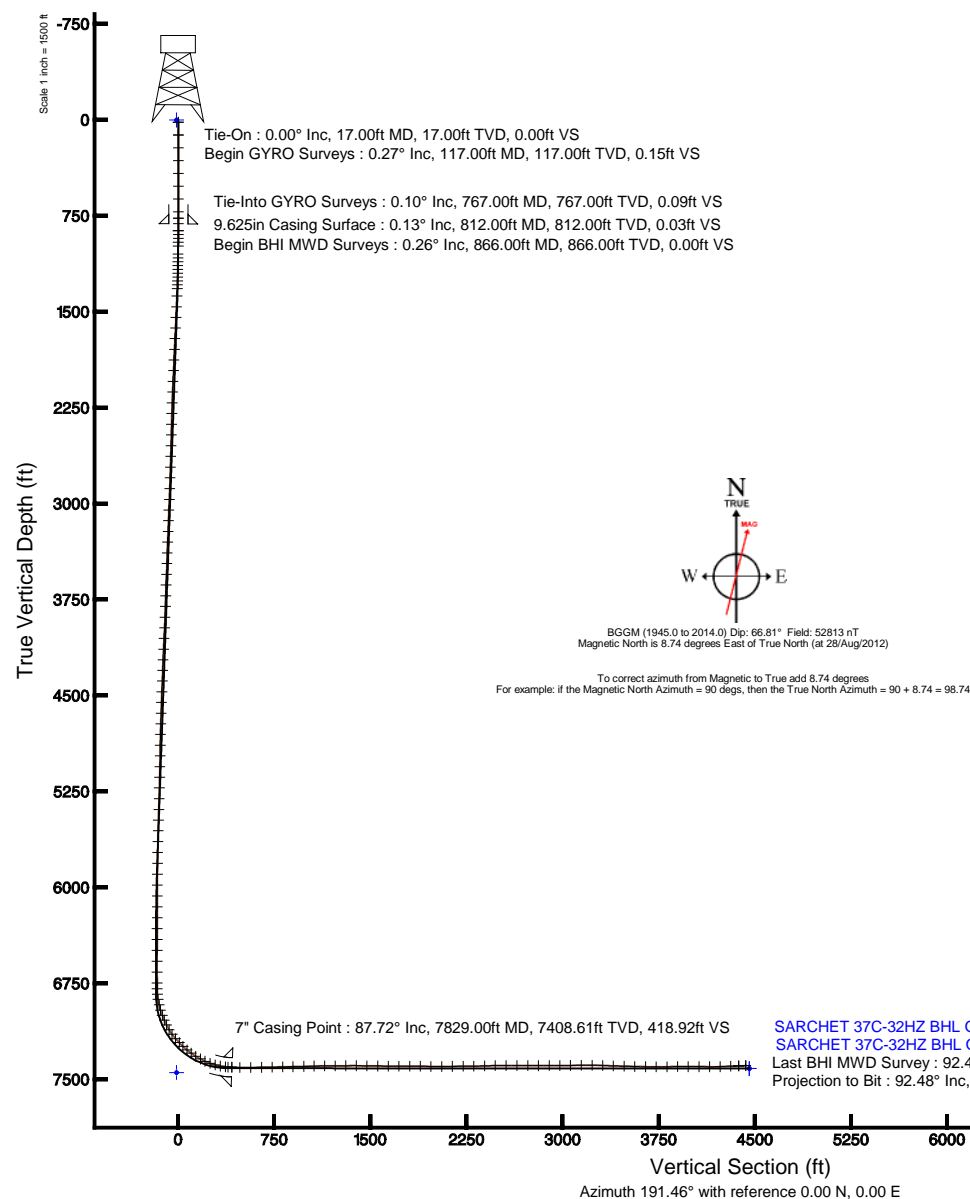


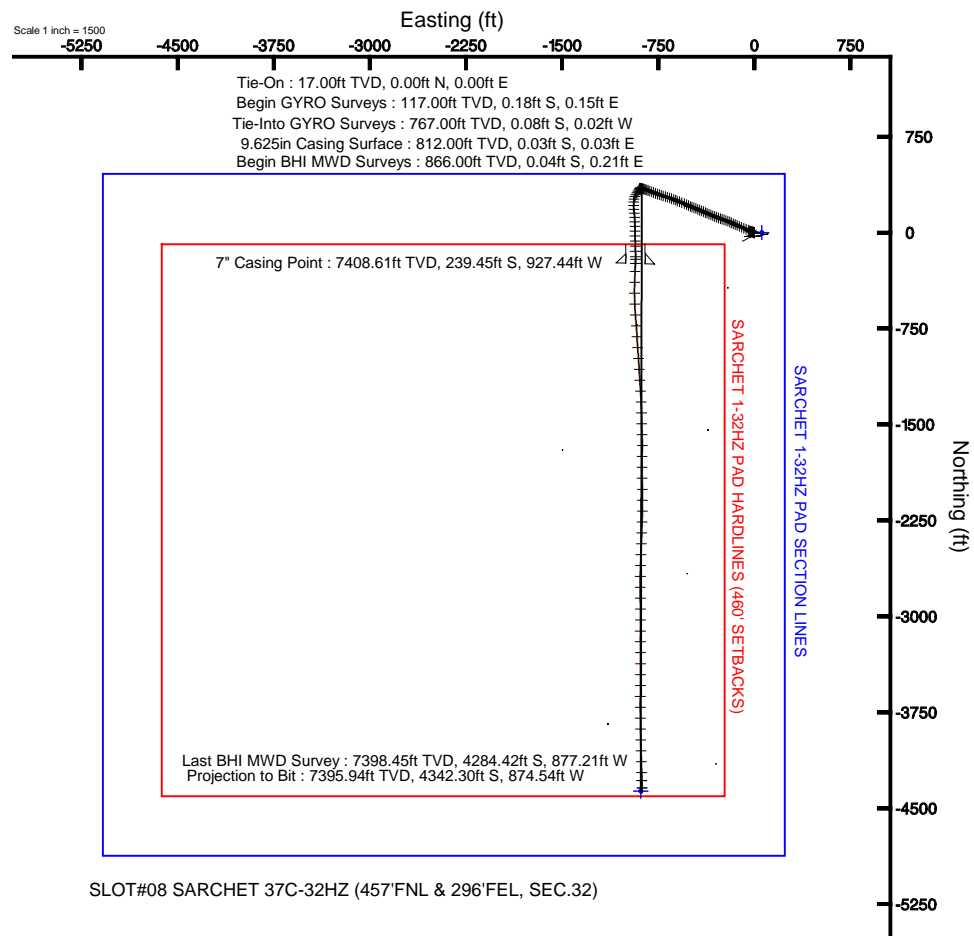
# KERR-MCGEE OIL & GAS ONSHORE LP

Location: COLORADO Slot: SLOT#08 SARCHET 37C-32HZ (457'FNL & 296'FEL, SEC.32)  
Field: WELD COUNTY (KERR MCGEE) Well: SARCHET 37C-32HZ  
Facility: SEC.32-T3N-R66W Wellbore: SARCHET 37C-32HZ PWP



Plot reference wellpath is SARCHET 37C-32HZ (REV-B.0) PWP

True vertical depths are referenced to XTREME 8 (RKB)	Grid System: NAD83 / Lambert Colorado SP, Northern Zone (501), US feet
Measured depths are referenced to XTREME 8 (RKB)	North Reference: True north
XTREME 8 (RKB) to Mean Sea Level: 4941 feet	Scale: True distance
Mean Sea Level to Mud line (At Slot: SLOT#08 SARCHET 37C-32HZ (457'FNL & 296'FEL, SEC.32)): 0 feet	Depths are in feet
Coordinates are in feet referenced to Slot	Created by: augunora on 13/Sep/2012





# Actual Wellpath Report

SARCHET 37C-32HZ AWP

Page 1 of 7



## REFERENCE WELLPATH IDENTIFICATION

Operator	KERR-MCGEE OIL & GAS ONSHORE LP	Slot	SLOT#08 SARCHET 37C-32HZ (457'FNL & 296'FEL, SEC.32)
Area	COLORADO	Well	SARCHET 37C-32HZ
Field	WELD COUNTY (KERR MCGEE)	Wellbore	SARCHET 37C-32HZ AWB
Facility	SEC.32-T3N-R66W		

## REPORT SETUP INFORMATION

Projection System	NAD83 / Lambert Colorado SP, Northern Zone (501), US feet	Software System	WellArchitect@ 3.0.0
North Reference	True	User	Augunora
Scale	0.999957	Report Generated	14/Sep/2012 at 08:21
Convergence at slot	0.46° East	Database/Source file	WA_ANADARKO/SARCHET_37C-32HZ_AWB.xml

## WELLPATH LOCATION

	Local coordinates		Grid coordinates		Geographic coordinates	
	North[ft]	East[ft]	Easting[US ft]	Northing[US ft]	Latitude	Longitude
Slot Location	4636.63	1090.34	3197615.26	1311901.77	40°11'14.651"N	104°47'33.601"W
Facility Reference Pt			3196561.77	1307256.85	40°10'28.832"N	104°47'47.650"W
Field Reference Pt			3197771.84	1268891.29	40°04'09.600"N	104°47'36.000"W

## WELLPATH DATUM

Calculation method	Minimum curvature	XTREME 8 (RKB) to Facility Vertical Datum	4941.00ft
Horizontal Reference Pt	Slot	XTREME 8 (RKB) to Mean Sea Level	4941.00ft
Vertical Reference Pt	XTREME 8 (RKB)	XTREME 8 (RKB) to Mud Line at Slot (SLOT#08 SARCHET 37C-32HZ (457'FNL & 296'FEL, SEC.32))	4941.00ft
MD Reference Pt	XTREME 8 (RKB)	Section Origin	N 0.00, E 0.00 ft
Field Vertical Reference	Mean Sea Level	Section Azimuth	191.39°



# Actual Wellpath Report

SARCHET 37C-32HZ AWP

Page 2 of 7



## REFERENCE WELLPATH IDENTIFICATION

Operator	KERR-MCGEE OIL & GAS ONSHORE LP	Slot	SLOT#08 SARCHET 37C-32HZ (457'FNL & 296'FEL, SEC.32)
Area	COLORADO	Well	SARCHET 37C-32HZ
Field	WELD COUNTY (KERR MCGEE)	Wellbore	SARCHET 37C-32HZ AWB
Facility	SEC.32-T3N-R66W		

## WELLPATH DATA (163 stations) † = interpolated/extrapolated station

MD [ft]	Inclination [°]	Azimuth [°]	TVD [ft]	Vert Sect [ft]	North [ft]	East [ft]	Latitude	Longitude	DLS [°/100ft]	Comments
0.00†	0.000	141.050	0.00	0.00	0.00	0.00	40°11'14.651"N	104°47'33.601"W	0.00	
17.00	0.000	141.050	17.00	0.00	0.00	0.00	40°11'14.651"N	104°47'33.601"W	0.00	Tie-On
117.00	0.270	141.050	117.00	0.15	-0.18	0.15	40°11'14.649"N	104°47'33.599"W	0.27	Begin GYRO Surveys
217.00	0.150	332.140	217.00	0.20	-0.25	0.24	40°11'14.649"N	104°47'33.598"W	0.42	
317.00	0.060	210.550	317.00	0.15	-0.18	0.15	40°11'14.649"N	104°47'33.599"W	0.19	
417.00	0.160	341.840	417.00	0.08	-0.09	0.08	40°11'14.650"N	104°47'33.600"W	0.20	
517.00	0.080	166.320	517.00	0.02	-0.03	0.05	40°11'14.651"N	104°47'33.600"W	0.24	
617.00	0.130	318.770	617.00	0.01	-0.01	-0.01	40°11'14.651"N	104°47'33.601"W	0.20	
717.00	0.160	165.760	717.00	0.07	-0.06	-0.05	40°11'14.650"N	104°47'33.602"W	0.28	
767.00	0.100	10.200	767.00	0.09	-0.08	-0.02	40°11'14.650"N	104°47'33.601"W	0.51	Tie-Into GYRO Surveys
866.00	0.260	100.980	866.00	0.00	-0.04	0.21	40°11'14.651"N	104°47'33.598"W	0.28	Begin BHI MWD Surveys
896.00	0.220	123.330	896.00	0.02	-0.09	0.33	40°11'14.650"N	104°47'33.597"W	0.34	
927.00	0.070	264.590	927.00	0.05	-0.12	0.36	40°11'14.650"N	104°47'33.596"W	0.90	
957.00	0.890	323.780	957.00	-0.10	0.06	0.20	40°11'14.652"N	104°47'33.598"W	2.85	
987.00	2.270	306.810	986.98	-0.52	0.61	-0.41	40°11'14.657"N	104°47'33.606"W	4.81	
1048.00	3.230	300.040	1047.91	-1.58	2.19	-2.87	40°11'14.673"N	104°47'33.638"W	1.66	
1078.00	3.360	299.440	1077.86	-2.13	3.05	-4.36	40°11'14.681"N	104°47'33.657"W	0.45	
1108.00	4.590	295.740	1107.79	-2.70	4.00	-6.21	40°11'14.691"N	104°47'33.681"W	4.19	
1139.00	5.930	291.620	1138.66	-3.29	5.13	-8.82	40°11'14.702"N	104°47'33.715"W	4.49	
1169.00	6.840	289.800	1168.47	-3.82	6.31	-11.94	40°11'14.713"N	104°47'33.755"W	3.11	
1199.00	7.740	289.500	1198.23	-4.37	7.59	-15.52	40°11'14.726"N	104°47'33.801"W	3.00	
1229.00	8.640	289.630	1227.93	-4.98	9.02	-19.55	40°11'14.740"N	104°47'33.853"W	3.00	
1260.00	9.890	288.700	1258.52	-5.65	10.65	-24.27	40°11'14.756"N	104°47'33.914"W	4.06	
1290.00	10.590	291.820	1288.04	-6.48	12.50	-29.26	40°11'14.775"N	104°47'33.978"W	2.98	
1321.00	11.450	295.070	1318.47	-7.72	14.87	-34.70	40°11'14.798"N	104°47'34.048"W	3.42	
1381.00	11.810	295.860	1377.24	-10.67	20.07	-45.62	40°11'14.849"N	104°47'34.189"W	0.66	
1466.00	12.790	291.840	1460.29	-14.55	27.36	-62.18	40°11'14.921"N	104°47'34.402"W	1.53	
1552.00	13.210	292.250	1544.08	-18.13	34.62	-80.11	40°11'14.993"N	104°47'34.633"W	0.50	
1637.00	12.790	293.410	1626.91	-21.92	42.04	-97.73	40°11'15.066"N	104°47'34.860"W	0.58	
1722.00	12.980	294.060	1709.76	-25.97	49.67	-115.08	40°11'15.142"N	104°47'35.084"W	0.28	
1808.00	12.850	293.430	1793.59	-30.09	57.41	-132.68	40°11'15.218"N	104°47'35.311"W	0.22	
1893.00	11.250	292.060	1876.71	-33.59	64.28	-149.03	40°11'15.286"N	104°47'35.521"W	1.91	
1978.00	10.680	295.350	1960.16	-37.03	70.77	-163.84	40°11'15.350"N	104°47'35.712"W	1.00	
2063.00	10.560	295.820	2043.71	-40.87	77.53	-177.97	40°11'15.417"N	104°47'35.894"W	0.17	
2149.00	10.180	296.320	2128.30	-44.79	84.34	-191.87	40°11'15.484"N	104°47'36.073"W	0.45	
2234.00	10.560	290.740	2211.92	-48.00	90.42	-205.89	40°11'15.545"N	104°47'36.254"W	1.26	
2319.00	11.010	290.050	2295.41	-50.48	95.97	-220.80	40°11'15.599"N	104°47'36.446"W	0.55	
2405.00	10.420	289.270	2379.91	-52.79	101.35	-235.85	40°11'15.653"N	104°47'36.640"W	0.71	
2490.00	9.580	288.130	2463.62	-54.67	106.09	-249.83	40°11'15.699"N	104°47'36.820"W	1.02	
2575.00	9.870	291.330	2547.40	-56.76	110.94	-263.34	40°11'15.747"N	104°47'36.994"W	0.72	
2660.00	10.700	289.450	2631.03	-59.12	116.21	-277.57	40°11'15.799"N	104°47'37.177"W	1.05	
2746.00	10.260	289.350	2715.60	-61.31	121.41	-292.32	40°11'15.851"N	104°47'37.368"W	0.51	
2831.00	11.180	291.670	2799.12	-63.83	126.96	-307.12	40°11'15.906"N	104°47'37.558"W	1.20	
2916.00	10.960	293.200	2882.53	-66.95	133.19	-322.21	40°11'15.967"N	104°47'37.753"W	0.43	
3002.00	10.880	293.210	2966.98	-70.29	139.61	-337.18	40°11'16.031"N	104°47'37.946"W	0.09	



# Actual Wellpath Report

SARCHET 37C-32HZ AWP

Page 3 of 7



## REFERENCE WELLPATH IDENTIFICATION

Operator	KERR-MCGEE OIL & GAS ONSHORE LP	Slot	SLOT#08 SARCHET 37C-32HZ (457'FNL & 296'FEL, SEC.32)
Area	COLORADO	Well	SARCHET 37C-32HZ
Field	WELD COUNTY (KERR MCGEE)	Wellbore	SARCHET 37C-32HZ AWB
Facility	SEC.32-T3N-R66W		

## WELLPATH DATA (163 stations)

MD [ft]	Inclination [°]	Azimuth [°]	TVD [ft]	Vert Sect [ft]	North [ft]	East [ft]	Latitude	Longitude	DLS [°/100ft]	Comments
3087.00	11.640	293.440	3050.34	-73.72	146.18	-352.42	40°11'16.096"N	104°47'38.142"W	0.90	
3172.00	10.310	291.190	3133.78	-76.81	152.34	-367.38	40°11'16.156"N	104°47'38.335"W	1.64	
3257.00	10.880	293.440	3217.34	-79.78	158.28	-381.83	40°11'16.215"N	104°47'38.521"W	0.83	
3343.00	11.070	294.230	3301.76	-83.31	164.90	-396.81	40°11'16.280"N	104°47'38.714"W	0.28	
3428.00	10.420	291.950	3385.27	-86.53	171.12	-411.38	40°11'16.342"N	104°47'38.902"W	0.91	
3513.00	10.110	290.990	3468.91	-89.18	176.67	-425.47	40°11'16.397"N	104°47'39.083"W	0.42	
3599.00	11.380	296.430	3553.40	-92.65	183.15	-440.12	40°11'16.461"N	104°47'39.272"W	1.89	
3684.00	11.260	290.470	3636.75	-96.13	189.78	-455.40	40°11'16.526"N	104°47'39.469"W	1.38	
3769.00	11.150	289.760	3720.13	-98.64	195.46	-470.91	40°11'16.583"N	104°47'39.669"W	0.21	
3855.00	10.040	289.940	3804.67	-100.97	200.83	-485.79	40°11'16.636"N	104°47'39.860"W	1.29	
3940.00	9.810	295.190	3888.40	-103.79	206.44	-499.31	40°11'16.691"N	104°47'40.035"W	1.10	
4025.00	11.150	294.970	3971.98	-107.45	212.99	-513.31	40°11'16.756"N	104°47'40.215"W	1.58	
4110.00	12.350	293.950	4055.19	-111.36	220.15	-529.07	40°11'16.826"N	104°47'40.418"W	1.43	
4196.00	13.560	292.100	4139.00	-115.23	227.68	-546.81	40°11'16.901"N	104°47'40.647"W	1.49	
4281.00	13.690	292.060	4221.61	-118.95	235.20	-565.37	40°11'16.975"N	104°47'40.886"W	0.15	
4366.00	12.860	289.840	4304.34	-122.20	242.19	-583.59	40°11'17.044"N	104°47'41.121"W	1.15	
4451.00	10.860	294.590	4387.52	-125.42	248.74	-599.77	40°11'17.109"N	104°47'41.329"W	2.62	
4537.00	10.130	292.150	4472.08	-128.69	254.96	-614.14	40°11'17.170"N	104°47'41.514"W	0.99	
4622.00	11.260	290.720	4555.61	-131.43	260.71	-628.83	40°11'17.227"N	104°47'41.703"W	1.37	
4707.00	11.890	292.550	4638.88	-134.47	267.01	-644.68	40°11'17.289"N	104°47'41.908"W	0.86	
4792.00	11.920	289.990	4722.05	-137.48	273.37	-661.01	40°11'17.352"N	104°47'42.118"W	0.62	
4878.00	11.660	287.560	4806.24	-139.74	279.02	-677.65	40°11'17.408"N	104°47'42.333"W	0.65	
4963.00	11.670	285.820	4889.48	-141.33	283.96	-694.11	40°11'17.457"N	104°47'42.545"W	0.41	
5048.00	10.990	286.120	4972.82	-142.66	288.55	-710.16	40°11'17.502"N	104°47'42.751"W	0.80	
5134.00	10.760	288.490	5057.28	-144.33	293.37	-725.65	40°11'17.550"N	104°47'42.951"W	0.58	
5219.00	11.280	289.370	5140.71	-146.47	298.65	-741.02	40°11'17.602"N	104°47'43.149"W	0.64	
5304.00	10.590	288.410	5224.17	-148.58	303.87	-756.27	40°11'17.654"N	104°47'43.346"W	0.84	
5389.00	10.390	290.500	5307.75	-150.74	309.02	-770.86	40°11'17.705"N	104°47'43.534"W	0.51	
5475.00	10.740	291.540	5392.29	-153.39	314.68	-785.58	40°11'17.761"N	104°47'43.723"W	0.46	
5560.00	11.190	290.620	5475.74	-156.10	320.49	-800.66	40°11'17.818"N	104°47'43.918"W	0.57	
5645.00	9.520	288.820	5559.35	-158.34	325.67	-815.04	40°11'17.869"N	104°47'44.103"W	2.00	
5731.00	8.000	290.620	5644.34	-160.22	330.07	-827.37	40°11'17.913"N	104°47'44.262"W	1.80	
5816.00	6.440	290.500	5728.67	-161.92	333.82	-837.37	40°11'17.950"N	104°47'44.391"W	1.84	
5901.00	5.580	287.880	5813.20	-163.14	336.76	-845.77	40°11'17.979"N	104°47'44.499"W	1.06	
5987.00	4.890	286.230	5898.84	-163.93	339.07	-853.27	40°11'18.002"N	104°47'44.595"W	0.82	
6072.00	4.290	284.200	5983.57	-164.39	340.86	-859.83	40°11'18.019"N	104°47'44.680"W	0.73	
6157.00	3.730	288.340	6068.36	-164.88	342.51	-865.54	40°11'18.036"N	104°47'44.754"W	0.74	
6242.00	3.230	286.930	6153.20	-165.45	344.08	-870.45	40°11'18.051"N	104°47'44.817"W	0.60	
6328.00	2.640	288.710	6239.09	-165.93	345.42	-874.65	40°11'18.064"N	104°47'44.871"W	0.69	
6413.00	2.480	283.240	6324.01	-166.24	346.47	-878.29	40°11'18.075"N	104°47'44.918"W	0.34	
6498.00	2.060	278.620	6408.94	-166.23	347.12	-881.59	40°11'18.081"N	104°47'44.960"W	0.54	
6584.00	1.630	290.000	6494.89	-166.34	347.77	-884.27	40°11'18.087"N	104°47'44.995"W	0.65	
6669.00	1.400	280.950	6579.86	-166.51	348.38	-886.42	40°11'18.094"N	104°47'45.023"W	0.39	
6754.00	1.320	276.470	6664.84	-166.42	348.68	-888.42	40°11'18.097"N	104°47'45.048"W	0.16	
6840.00	1.140	277.030	6750.82	-166.27	348.90	-890.25	40°11'18.099"N	104°47'45.072"W	0.21	



# Actual Wellpath Report

SARCHET 37C-32HZ AWP

Page 4 of 7



## REFERENCE WELLPATH IDENTIFICATION

Operator	KERR-MCGEE OIL & GAS ONSHORE LP	Slot	SLOT#08 SARCHET 37C-32HZ (457'FNL & 296'FEL, SEC.32)
Area	COLORADO	Well	SARCHET 37C-32HZ
Field	WELD COUNTY (KERR MCGEE)	Wellbore	SARCHET 37C-32HZ AWB
Facility	SEC.32-T3N-R66W		

## WELLPATH DATA (163 stations) † = interpolated/extrapolated station

MD [ft]	Inclination [°]	Azimuth [°]	TVD [ft]	Vert Sect [ft]	North [ft]	East [ft]	Latitude	Longitude	DLS [°/100ft]	Comments
6883.00	0.860	250.740	6793.81	-166.07	348.85	-890.98	40°11'18.098"N	104°47'45.081"W	1.23	
6926.00	5.170	211.940	6836.75	-164.09	347.10	-892.31	40°11'18.081"N	104°47'45.098"W	10.54	
6968.00	9.950	213.150	6878.37	-158.95	342.45	-895.30	40°11'18.035"N	104°47'45.137"W	11.39	
7011.00	14.010	218.650	6920.43	-150.86	335.27	-900.58	40°11'17.964"N	104°47'45.205"W	9.80	
7054.00	17.790	208.870	6961.78	-139.97	325.45	-907.01	40°11'17.867"N	104°47'45.288"W	10.75	
7096.00	22.150	210.780	7001.25	-126.37	313.02	-914.16	40°11'17.744"N	104°47'45.380"W	10.50	
7138.00	24.460	211.710	7039.82	-110.75	298.82	-922.78	40°11'17.604"N	104°47'45.491"W	5.57	
7181.00	27.560	203.310	7078.47	-92.66	282.10	-931.40	40°11'17.439"N	104°47'45.602"W	11.18	
7224.00	30.350	191.960	7116.12	-72.04	262.32	-937.60	40°11'17.243"N	104°47'45.682"W	14.31	
7266.00	36.090	184.000	7151.26	-49.13	239.57	-940.66	40°11'17.018"N	104°47'45.721"W	17.14	
7309.00	42.090	180.390	7184.62	-22.40	212.49	-941.65	40°11'16.751"N	104°47'45.734"W	14.92	
7352.00	44.670	171.860	7215.90	6.02	183.09	-939.60	40°11'16.460"N	104°47'45.708"W	14.88	
7395.00	48.220	174.900	7245.53	35.66	152.14	-936.03	40°11'16.154"N	104°47'45.662"W	9.71	
7437.00	51.090	176.610	7272.72	66.48	120.23	-933.68	40°11'15.839"N	104°47'45.631"W	7.50	
7480.00	54.370	177.870	7298.75	99.66	86.05	-932.04	40°11'15.501"N	104°47'45.610"W	7.98	
7523.00	57.990	178.920	7322.68	134.46	50.35	-931.04	40°11'15.148"N	104°47'45.597"W	8.66	
7566.00	63.310	178.700	7343.75	171.03	12.89	-930.26	40°11'14.778"N	104°47'45.587"W	12.38	
7608.00	66.330	179.380	7361.62	208.16	-25.11	-929.63	40°11'14.403"N	104°47'45.579"W	7.34	
7651.00	69.860	177.770	7377.66	247.05	-64.98	-928.63	40°11'14.009"N	104°47'45.566"W	8.91	
7693.00	75.340	179.060	7390.21	286.09	-105.03	-927.53	40°11'13.613"N	104°47'45.552"W	13.37	
7735.00	79.760	179.070	7399.27	326.15	-146.03	-926.86	40°11'13.208"N	104°47'45.543"W	10.52	
7778.00	83.710	179.670	7405.45	367.76	-188.57	-926.39	40°11'12.787"N	104°47'45.537"W	9.29	
7798.00	86.740	181.330	7407.11	387.33	-208.50	-926.57	40°11'12.590"N	104°47'45.540"W	17.26	
7829.00†	87.723	181.891	7408.61	417.84	-239.45	-927.44	40°11'12.285"N	104°47'45.551"W	3.65	7" Casing Point
7892.00	89.720	183.030	7410.02	480.06	-302.37	-930.14	40°11'11.663"N	104°47'45.586"W	3.65	
7977.00	90.150	181.420	7410.11	563.97	-387.30	-933.44	40°11'10.824"N	104°47'45.628"W	1.96	
8063.00	91.510	179.570	7408.87	648.41	-473.28	-934.19	40°11'09.974"N	104°47'45.638"W	2.67	
8148.00	90.860	177.450	7407.11	731.25	-558.23	-931.98	40°11'09.134"N	104°47'45.609"W	2.61	
8233.00	91.040	175.550	7405.70	813.38	-643.06	-926.79	40°11'08.296"N	104°47'45.542"W	2.24	
8318.00	91.170	175.360	7404.06	895.10	-727.77	-920.05	40°11'07.459"N	104°47'45.455"W	0.27	
8404.00	91.830	177.240	7401.81	978.10	-813.56	-914.50	40°11'06.611"N	104°47'45.384"W	2.32	
8489.00	91.440	175.980	7399.38	1060.26	-898.38	-909.48	40°11'05.773"N	104°47'45.319"W	1.55	
8574.00	90.150	176.000	7398.20	1142.20	-983.16	-903.54	40°11'04.935"N	104°47'45.243"W	1.52	
8660.00	90.430	176.500	7397.77	1225.21	-1068.97	-897.91	40°11'04.087"N	104°47'45.170"W	0.67	
8745.00	90.860	176.760	7396.81	1307.40	-1153.82	-892.92	40°11'03.249"N	104°47'45.106"W	0.59	
8830.00	89.510	176.370	7396.54	1389.57	-1238.67	-887.82	40°11'02.410"N	104°47'45.040"W	1.65	
8915.00	89.040	176.970	7397.61	1471.78	-1323.51	-882.89	40°11'01.572"N	104°47'44.976"W	0.90	
9001.00	89.260	178.280	7398.89	1555.30	-1409.43	-879.32	40°11'00.723"N	104°47'44.930"W	1.54	
9086.00	89.750	178.990	7399.62	1638.19	-1494.40	-877.30	40°10'59.883"N	104°47'44.904"W	1.01	
9171.00	90.060	177.890	7399.76	1721.03	-1579.37	-874.98	40°10'59.044"N	104°47'44.874"W	1.34	
9257.00	90.330	180.470	7399.47	1805.08	-1665.35	-873.75	40°10'58.194"N	104°47'44.859"W	3.02	
9342.00	88.650	180.520	7400.23	1888.54	-1750.34	-874.49	40°10'57.354"N	104°47'44.868"W	1.98	
9427.00	88.640	180.550	7402.24	1972.00	-1835.31	-875.28	40°10'56.514"N	104°47'44.878"W	0.04	
9512.00	90.400	178.580	7402.95	2055.19	-1920.30	-874.64	40°10'55.674"N	104°47'44.870"W	3.11	
9598.00	91.200	179.460	7401.75	2139.18	-2006.28	-873.17	40°10'54.825"N	104°47'44.851"W	1.38	



# Actual Wellpath Report

SARCHET 37C-32HZ AWP

Page 5 of 7



## REFERENCE WELLPATH IDENTIFICATION

Operator	KERR-MCGEE OIL & GAS ONSHORE LP	Slot	SLOT#08 SARCHET 37C-32HZ (457'FNL & 296'FEL, SEC.32)
Area	COLORADO	Well	SARCHET 37C-32HZ
Field	WELD COUNTY (KERR MCGEE)	Wellbore	SARCHET 37C-32HZ AWB
Facility	SEC.32-T3N-R66W		

## WELLPATH DATA (163 stations)

MD [ft]	Inclination [°]	Azimuth [°]	TVD [ft]	Vert Sect [ft]	North [ft]	East [ft]	Latitude	Longitude	DLS [°/100ft]	Comments
9683.00	90.370	179.500	7400.58	2222.34	-2091.27	-872.39	40°10'53.985"N	104°47'44.841"W	0.98	
9768.00	90.430	181.050	7399.99	2305.75	-2176.26	-872.80	40°10'53.145"N	104°47'44.846"W	1.82	
9854.00	91.940	182.110	7398.21	2390.47	-2262.21	-875.17	40°10'52.296"N	104°47'44.877"W	2.15	
9939.00	90.980	182.030	7396.05	2474.32	-2347.12	-878.24	40°10'51.457"N	104°47'44.916"W	1.13	
10024.00	89.820	181.910	7395.45	2558.17	-2432.07	-881.16	40°10'50.617"N	104°47'44.954"W	1.37	
10110.00	90.030	182.150	7395.57	2643.02	-2518.01	-884.21	40°10'49.768"N	104°47'44.993"W	0.37	
10195.00	89.350	181.990	7396.03	2726.90	-2602.96	-887.28	40°10'48.928"N	104°47'45.032"W	0.82	
10280.00	89.960	180.720	7396.54	2810.60	-2687.93	-889.29	40°10'48.089"N	104°47'45.058"W	1.66	
10366.00	90.700	179.740	7396.04	2894.97	-2773.93	-889.64	40°10'47.239"N	104°47'45.063"W	1.43	
10451.00	90.670	179.600	7395.03	2978.19	-2858.92	-889.15	40°10'46.399"N	104°47'45.056"W	0.17	
10536.00	90.550	179.720	7394.12	3061.41	-2943.91	-888.64	40°10'45.559"N	104°47'45.050"W	0.20	
10621.00	90.890	180.150	7393.05	3144.71	-3028.90	-888.55	40°10'44.719"N	104°47'45.048"W	0.64	
10707.00	89.450	180.370	7392.80	3229.09	-3114.90	-888.94	40°10'43.869"N	104°47'45.053"W	1.69	
10792.00	88.243	179.810	7394.51	3312.43	-3199.88	-889.07	40°10'43.030"N	104°47'45.055"W	1.57	
10877.00	87.960	179.510	7397.32	3395.61	-3284.83	-888.56	40°10'42.190"N	104°47'45.049"W	0.49	
10963.00	88.820	180.170	7399.74	3479.83	-3370.80	-888.32	40°10'41.341"N	104°47'45.045"W	1.26	
11048.00	88.120	180.270	7402.01	3563.19	-3455.77	-888.65	40°10'40.501"N	104°47'45.050"W	0.83	
11133.00	88.780	179.680	7404.31	3646.48	-3540.73	-888.61	40°10'39.661"N	104°47'45.049"W	1.04	
11218.00	89.590	180.720	7405.52	3729.86	-3625.72	-888.91	40°10'38.821"N	104°47'45.053"W	1.55	
11304.00	91.790	179.550	7404.48	3814.19	-3711.71	-889.11	40°10'37.972"N	104°47'45.055"W	2.90	
11389.00	89.540	180.100	7403.50	3897.46	-3796.70	-888.85	40°10'37.132"N	104°47'45.052"W	2.72	
11474.00	89.750	178.280	7404.02	3980.53	-3881.68	-887.65	40°10'36.292"N	104°47'45.037"W	2.16	
11559.00	90.490	178.820	7403.85	4063.41	-3966.66	-885.50	40°10'35.452"N	104°47'45.009"W	1.08	
11645.00	88.770	177.790	7404.40	4147.17	-4052.61	-882.96	40°10'34.603"N	104°47'44.976"W	2.33	
11730.00	92.000	178.700	7403.83	4229.93	-4137.56	-880.36	40°10'33.763"N	104°47'44.942"W	3.95	
11815.00	91.990	179.410	7400.87	4312.92	-4222.49	-878.95	40°10'32.924"N	104°47'44.924"W	0.83	
11877.00	92.480	177.360	7398.45	4373.28	-4284.42	-877.21	40°10'32.312"N	104°47'44.902"W	3.40	Last BHI MWD Survey
11935.00	92.480	177.360	7395.94	4429.49	-4342.30	-874.54	40°10'31.740"N	104°47'44.867"W	0.00	Projection to Bit

## HOLE & CASING SECTIONS - Ref Wellbore: SARCHET 37C-32HZ AWB Ref Wellpath: SARCHET 37C-32HZ AWP

String/Diameter	Start MD [ft]	End MD [ft]	Interval [ft]	Start TVD [ft]	End TVD [ft]	Start N/S [ft]	Start E/W [ft]	End N/S [ft]	End E/W [ft]
13.5in Open Hole	17.00	812.00	795.00	17.00	812.00	0.00	0.00	-0.03	0.03
9.625in Casing Surface	17.00	812.00	795.00	17.00	812.00	0.00	0.00	-0.03	0.03
8.75in Open Hole	812.00	7845.00	7033.00	812.00	7409.17	-0.03	0.03	-255.43	-928.01
7in Casing Intermediate	17.00	7829.00	7812.00	17.00	7408.61	0.00	0.00	-239.45	-927.44
6.125in Open Hole	7829.00	11935.00	4106.00	7408.61	7395.94	-239.45	-927.44	-4342.30	-874.54



# Actual Wellpath Report

SARCHET 37C-32HZ AWP

Page 6 of 7



## REFERENCE WELLPATH IDENTIFICATION

Operator	KERR-MCGEE OIL & GAS ONSHORE LP	Slot	SLOT#08 SARCHET 37C-32HZ (457'FNL & 296'FEL, SEC.32)
Area	COLORADO	Well	SARCHET 37C-32HZ
Field	WELD COUNTY (KERR MCGEE)	Wellbore	SARCHET 37C-32HZ AWB
Facility	SEC.32-T3N-R66W		

## TARGETS

Name	MD [ft]	TVD [ft]	North [ft]	East [ft]	Grid East [US ft]	Grid North [US ft]	Latitude	Longitude	Shape
SARCHET 1-32HZ PAD SECTION LINES		0.00	1.11	59.76	3197675.00	1311903.36	40°11'14.662"N	104°47'32.831"W	polygon
SARCHET 37C-32HZ BHL ON PLAT (460'FSL & 1175'FEL, SEC.32) REV-1		7419.00	-4367.58	-885.30	3196764.86	1307527.47	40°10'31.490"N	104°47'45.006"W	point
SARCHET 37C-32HZ BHL ON PLAT (460'FSL & 1175'FEL, SEC.32) REV-2		7419.00	-4367.62	-885.30	3196764.86	1307527.42	40°10'31.490"N	104°47'45.006"W	point
SARCHET 1-32HZ PAD HARDLINES (460' SETBACKS)		7450.00	1.11	59.76	3197675.00	1311903.36	40°11'14.662"N	104°47'32.831"W	polygon

## WELLPATH COMPOSITION - Ref Wellbore: SARCHET 37C-32HZ AWB Ref Wellpath: SARCHET 37C-32HZ AWP

Start MD [ft]	End MD [ft]	Positional Uncertainty Model	Log Name/Comment	Wellbore
17.00	767.00	Generic gyro - continuous (Standard)	GYRODATA SURVEYS <117-767>	SARCHET 37C-32HZ AWB
767.00	7892.00	NaviTrak (Standard)	BHI MWD Surveys 8 3/4" HOLE <866-7892>	SARCHET 37C-32HZ AWB
7892.00	11877.00	OnTrak (Standard)	BHI MWD Surveys 6 1/8" HOLE <7977-11877>	SARCHET 37C-32HZ AWB
11877.00	11935.00	Blind Drilling (std)	Projection to bit	SARCHET 37C-32HZ AWB





# Actual Wellpath Report

SARCHET 37C-32HZ AWP

Page 7 of 7



## REFERENCE WELLPATH IDENTIFICATION

Operator	KERR-MCGEE OIL & GAS ONSHORE LP	Slot	SLOT#08 SARCHET 37C-32HZ (457'FNL & 296'FEL, SEC.32)
Area	COLORADO	Well	SARCHET 37C-32HZ
Field	WELD COUNTY (KERR MCGEE)	Wellbore	SARCHET 37C-32HZ AWB
Facility	SEC.32-T3N-R66W		

## WELLPATH COMMENTS

MD [ft]	Inclination [°]	Azimuth [°]	TVD [ft]	Comment
17.00	0.000	141.050	17.00	Tie-On
117.00	0.270	141.050	117.00	Begin GYRO Surveys
767.00	0.100	10.200	767.00	Tie-Into GYRO Surveys
866.00	0.260	100.980	866.00	Begin BHI MWD Surveys
7829.00	87.723	181.891	7408.61	7" Casing Point
11877.00	92.480	177.360	7398.45	Last BHI MWD Survey
11935.00	92.480	177.360	7395.94	Projection to Bit