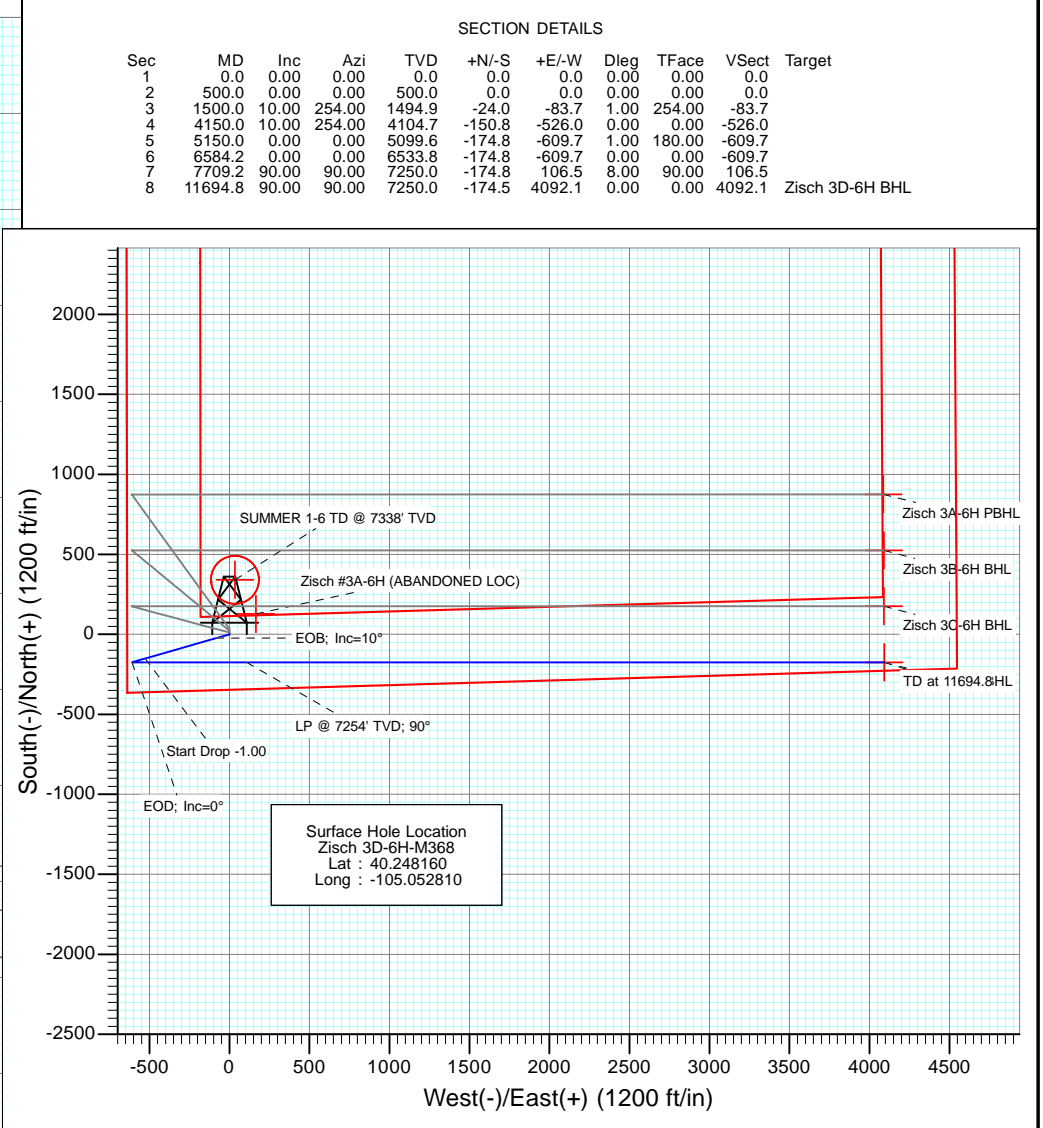
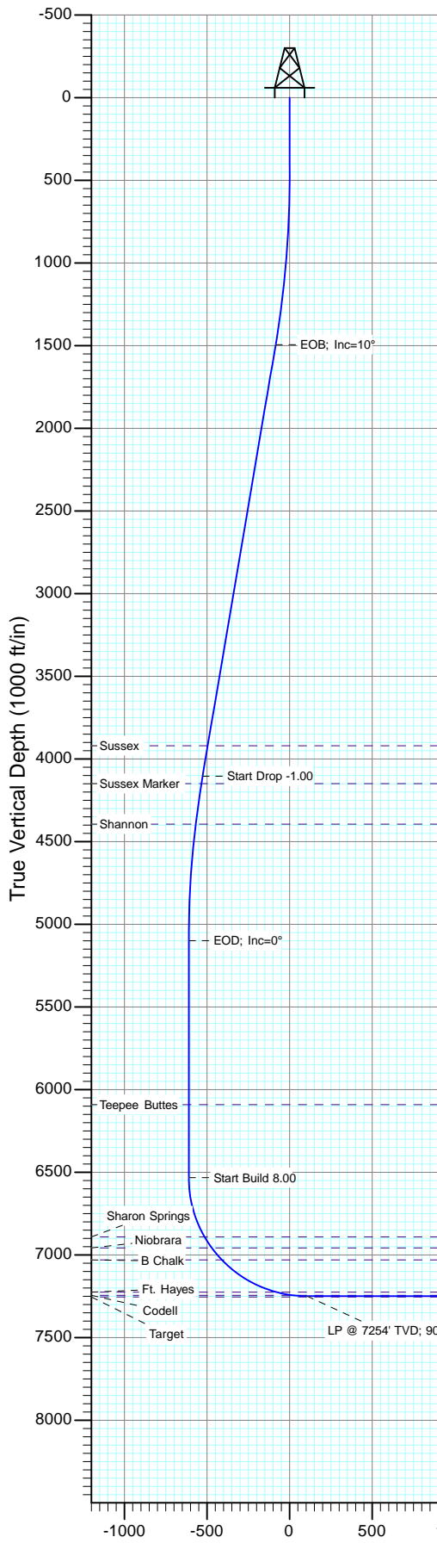




Project: DJ Wattenberg  
Site: S6-T3N-R68W (Zisch)  
Well: Zisch 3D-6H-M368  
Wellbore: HZ  
Design: Plan #1

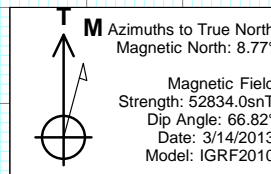


DESIGN TARGET DETAILS

Name	+N/-S	+E/-W	Northing	Easting	Latitude	Longitude
Zisch 3D-6H BHL	-174.5	4092.1	1333409.94	3128924.69	40.247680	-105.038150

FORMATION TOP DETAILS

TVDPath	MDPath	Formation
3920.0	3962.5	Sussex
4149.0	4195.0	Sussex Marker
4394.0	4442.6	Shannon
6091.0	6141.4	Teepee Buttes
6891.0	6958.2	Sharon Springs
6958.0	7038.2	Niobrara
7030.0	7132.4	B Chalk
7225.0	7519.4	Ft. Hayes
7244.0	7616.4	Codell



Plan #1  
Zisch 3D-6H-M368  
WELL @ 5173.0ft (Original Well Elev)  
Ground Elevation @ 5164.0  
North American Datum 1983  
Well Zisch 3D-6H-M368, True North

## Planning Report

<b>Database:</b>	USA EDM 5000 Multi Users DB	<b>Local Co-ordinate Reference:</b>	Well Zisch 3D-6H-M368
<b>Company:</b>	EnCana Oil & Gas (USA) Inc	<b>TVD Reference:</b>	KB @ 5177.0ft (Ensign )
<b>Project:</b>	DJ Wattenberg	<b>MD Reference:</b>	KB @ 5177.0ft (Ensign )
<b>Site:</b>	S6-T3N-R68W (Zisch)	<b>North Reference:</b>	True
<b>Well:</b>	Zisch 3D-6H-M368	<b>Survey Calculation Method:</b>	Minimum Curvature
<b>Wellbore:</b>	HZ		
<b>Design:</b>	Plan #1		

<b>Project</b>	DJ Wattenberg		
<b>Map System:</b>	US State Plane 1983	<b>System Datum:</b>	Mean Sea Level
<b>Geo Datum:</b>	North American Datum 1983		
<b>Map Zone:</b>	Colorado Northern Zone		

Site		S6-T3N-R68W (Zisch)			
Site Position:		Northing:	1,333,692.15 ft	Latitude:	40.248510
From:	Lat/Long	Easting:	3,124,995.76 ft	Longitude:	-105.052220
Position Uncertainty:	0.0 ft	Slot Radius:	13.200 in	Grid Convergence:	0.29 °

Well	Zisch 3D-6H-M368					
Well Position	+N/-S	0.0 ft	Northing:	1,333,563.81 ft	Latitude:	40.248160
	+E/-W	0.0 ft	Easting:	3,124,831.72 ft	Longitude:	-105.052810
Position Uncertainty		0.0 ft	Wellhead Elevation:	ft	Ground Level:	5,164.0 ft

<b>Wellbore</b>	HZ				
<b>Magnetics</b>	<b>Model Name</b>	<b>Sample Date</b>	<b>Declination (°)</b>	<b>Dip Angle (°)</b>	<b>Field Strength (nT)</b>
	IGRF2010	3/14/2013	8.77	66.82	52,834

<b>Design</b>	Plan #1			
<b>Audit Notes:</b>				
<b>Version:</b>	<b>Phase:</b>	PLAN	<b>Tie On Depth:</b>	4.0
<b>Vertical Section:</b>	<b>Depth From (TVD) (ft)</b>	<b>+N/-S (ft)</b>	<b>+E/-W (ft)</b>	<b>Direction (°)</b>
	4.0	0.0	0.0	90.00

<b>Plan Sections</b>										
Measured Depth (ft)	Inclination (°)	Azimuth (°)	Vertical Depth (ft)	+N/-S (ft)	+E/-W (ft)	Dogleg Rate (°/100ft)	Build Rate (°/100ft)	Turn Rate (°/100ft)	TFO (°)	Target
4.0	0.00	0.00	4.0	0.0	0.0	0.00	0.00	0.00	0.00	
504.0	0.00	0.00	504.0	0.0	0.0	0.00	0.00	0.00	0.00	
1,504.0	10.00	254.00	1,498.9	-24.0	-83.7	1.00	1.00	0.00	254.00	
4,154.0	10.00	254.00	4,108.7	-150.8	-526.0	0.00	0.00	0.00	0.00	
5,154.0	0.00	0.00	5,103.6	-174.8	-609.7	1.00	-1.00	0.00	180.00	
6,588.2	0.00	0.00	6,537.8	-174.8	-609.7	0.00	0.00	0.00	0.00	
7,713.2	90.00	90.00	7,254.0	-174.8	106.5	8.00	8.00	0.00	90.00	
11,698.8	90.00	90.00	7,254.0	-174.5	4,092.1	0.00	0.00	0.00	0.00	Zisch 3D-6H BHL

# Planning Report

<b>Database:</b>	USA EDM 5000 Multi Users DB	<b>Local Co-ordinate Reference:</b>	Well Zisch 3D-6H-M368
<b>Company:</b>	EnCana Oil & Gas (USA) Inc	<b>TVD Reference:</b>	KB @ 5177.0ft (Ensign )
<b>Project:</b>	DJ Wattenberg	<b>MD Reference:</b>	KB @ 5177.0ft (Ensign )
<b>Site:</b>	S6-T3N-R68W (Zisch)	<b>North Reference:</b>	True
<b>Well:</b>	Zisch 3D-6H-M368	<b>Survey Calculation Method:</b>	Minimum Curvature
<b>Wellbore:</b>	HZ		
<b>Design:</b>	Plan #1		

Planned Survey									
Measured Depth (ft)	Inclination (°)	Azimuth (°)	Vertical Depth (ft)	+N/-S (ft)	+E/-W (ft)	Vertical Section (ft)	Dogleg Rate (°/100ft)	Build Rate (°/100ft)	Comments / Formations
4.0	0.00	0.00	4.0	0.0	0.0	0.0	0.00	0.00	
100.0	0.00	0.00	100.0	0.0	0.0	0.0	0.00	0.00	
200.0	0.00	0.00	200.0	0.0	0.0	0.0	0.00	0.00	
300.0	0.00	0.00	300.0	0.0	0.0	0.0	0.00	0.00	
400.0	0.00	0.00	400.0	0.0	0.0	0.0	0.00	0.00	
500.0	0.00	0.00	500.0	0.0	0.0	0.0	0.00	0.00	
504.0	0.00	0.00	504.0	0.0	0.0	0.0	0.00	0.00	KOP @ 500'
600.0	0.96	254.00	600.0	-0.2	-0.8	-0.8	1.00	1.00	
700.0	1.96	254.00	700.0	-0.9	-3.2	-3.2	1.00	1.00	
800.0	2.96	254.00	799.9	-2.1	-7.3	-7.3	1.00	1.00	
900.0	3.96	254.00	899.7	-3.8	-13.1	-13.1	1.00	1.00	
1,000.0	4.96	254.00	999.4	-5.9	-20.6	-20.6	1.00	1.00	
1,100.0	5.96	254.00	1,098.9	-8.5	-29.8	-29.8	1.00	1.00	
1,200.0	6.96	254.00	1,198.3	-11.6	-40.6	-40.6	1.00	1.00	
1,300.0	7.96	254.00	1,297.4	-15.2	-53.1	-53.1	1.00	1.00	
1,400.0	8.96	254.00	1,396.4	-19.3	-67.2	-67.2	1.00	1.00	
1,500.0	9.96	254.00	1,495.0	-23.8	-83.0	-83.0	1.00	1.00	
1,504.0	10.00	254.00	1,498.9	-24.0	-83.7	-83.7	1.00	1.00	EOB; Inc=10°
1,600.0	10.00	254.00	1,593.5	-28.6	-99.7	-99.7	0.00	0.00	
1,700.0	10.00	254.00	1,692.0	-33.4	-116.4	-116.4	0.00	0.00	
1,800.0	10.00	254.00	1,790.4	-38.2	-133.1	-133.1	0.00	0.00	
1,900.0	10.00	254.00	1,888.9	-42.9	-149.8	-149.8	0.00	0.00	
2,000.0	10.00	254.00	1,987.4	-47.7	-166.5	-166.5	0.00	0.00	
2,100.0	10.00	254.00	2,085.9	-52.5	-183.2	-183.2	0.00	0.00	
2,200.0	10.00	254.00	2,184.4	-57.3	-199.9	-199.9	0.00	0.00	
2,300.0	10.00	254.00	2,282.8	-62.1	-216.5	-216.5	0.00	0.00	
2,400.0	10.00	254.00	2,381.3	-66.9	-233.2	-233.2	0.00	0.00	
2,500.0	10.00	254.00	2,479.8	-71.7	-249.9	-249.9	0.00	0.00	
2,600.0	10.00	254.00	2,578.3	-76.5	-266.6	-266.6	0.00	0.00	
2,700.0	10.00	254.00	2,676.8	-81.2	-283.3	-283.3	0.00	0.00	
2,800.0	10.00	254.00	2,775.2	-86.0	-300.0	-300.0	0.00	0.00	
2,900.0	10.00	254.00	2,873.7	-90.8	-316.7	-316.7	0.00	0.00	
3,000.0	10.00	254.00	2,972.2	-95.6	-333.4	-333.4	0.00	0.00	
3,100.0	10.00	254.00	3,070.7	-100.4	-350.1	-350.1	0.00	0.00	
3,200.0	10.00	254.00	3,169.2	-105.2	-366.8	-366.8	0.00	0.00	
3,300.0	10.00	254.00	3,267.6	-110.0	-383.5	-383.5	0.00	0.00	
3,400.0	10.00	254.00	3,366.1	-114.7	-400.2	-400.2	0.00	0.00	
3,500.0	10.00	254.00	3,464.6	-119.5	-416.8	-416.8	0.00	0.00	
3,600.0	10.00	254.00	3,563.1	-124.3	-433.5	-433.5	0.00	0.00	
3,700.0	10.00	254.00	3,661.6	-129.1	-450.2	-450.2	0.00	0.00	
3,800.0	10.00	254.00	3,760.0	-133.9	-466.9	-466.9	0.00	0.00	
3,900.0	10.00	254.00	3,858.5	-138.7	-483.6	-483.6	0.00	0.00	
3,966.5	10.00	254.00	3,924.0	-141.9	-494.7	-494.7	0.00	0.00	Sussex
4,000.0	10.00	254.00	3,957.0	-143.5	-500.3	-500.3	0.00	0.00	
4,100.0	10.00	254.00	4,055.5	-148.2	-517.0	-517.0	0.00	0.00	
4,154.0	10.00	254.00	4,108.7	-150.8	-526.0	-526.0	0.00	0.00	Start Drop -1.00
4,199.0	9.55	254.00	4,153.0	-152.9	-533.4	-533.4	1.00	-1.00	Sussex Marker
4,200.0	9.54	254.00	4,154.0	-153.0	-533.5	-533.5	1.00	-1.00	
4,300.0	8.54	254.00	4,252.8	-157.3	-548.6	-548.6	1.00	-1.00	
4,400.0	7.54	254.00	4,351.8	-161.2	-562.1	-562.1	1.00	-1.00	
4,446.6	7.07	254.00	4,398.0	-162.8	-567.8	-567.8	1.00	-1.00	Shannon
4,500.0	6.54	254.00	4,451.0	-164.5	-573.8	-573.8	1.00	-1.00	

# Planning Report

<b>Database:</b>	USA EDM 5000 Multi Users DB	<b>Local Co-ordinate Reference:</b>	Well Zisch 3D-6H-M368
<b>Company:</b>	EnCana Oil & Gas (USA) Inc	<b>TVD Reference:</b>	KB @ 5177.0ft (Ensign )
<b>Project:</b>	DJ Wattenberg	<b>MD Reference:</b>	KB @ 5177.0ft (Ensign )
<b>Site:</b>	S6-T3N-R68W (Zisch)	<b>North Reference:</b>	True
<b>Well:</b>	Zisch 3D-6H-M368	<b>Survey Calculation Method:</b>	Minimum Curvature
<b>Wellbore:</b>	HZ		
<b>Design:</b>	Plan #1		

Planned Survey									
Measured Depth (ft)	Inclination (°)	Azimuth (°)	Vertical Depth (ft)	+N/-S (ft)	+E/-W (ft)	Vertical Section (ft)	Dogleg Rate (°/100ft)	Build Rate (°/100ft)	Comments / Formations
4,600.0	5.54	254.00	4,550.5	-167.4	-584.0	-584.0	1.00	-1.00	
4,700.0	4.54	254.00	4,650.1	-169.9	-592.4	-592.4	1.00	-1.00	
4,800.0	3.54	254.00	4,749.8	-171.8	-599.2	-599.2	1.00	-1.00	
4,900.0	2.54	254.00	4,849.7	-173.3	-604.3	-604.3	1.00	-1.00	
5,000.0	1.54	254.00	4,949.6	-174.3	-607.7	-607.7	1.00	-1.00	
5,100.0	0.54	254.00	5,049.6	-174.8	-609.4	-609.4	1.00	-1.00	
5,154.0	0.00	0.00	5,103.6	-174.8	-609.7	-609.7	1.00	-1.00	EOD; Inc=0°
5,200.0	0.00	0.00	5,149.6	-174.8	-609.7	-609.7	0.00	0.00	
5,300.0	0.00	0.00	5,249.6	-174.8	-609.7	-609.7	0.00	0.00	
5,400.0	0.00	0.00	5,349.6	-174.8	-609.7	-609.7	0.00	0.00	
5,500.0	0.00	0.00	5,449.6	-174.8	-609.7	-609.7	0.00	0.00	
5,600.0	0.00	0.00	5,549.6	-174.8	-609.7	-609.7	0.00	0.00	
5,700.0	0.00	0.00	5,649.6	-174.8	-609.7	-609.7	0.00	0.00	
5,800.0	0.00	0.00	5,749.6	-174.8	-609.7	-609.7	0.00	0.00	
5,900.0	0.00	0.00	5,849.6	-174.8	-609.7	-609.7	0.00	0.00	
6,000.0	0.00	0.00	5,949.6	-174.8	-609.7	-609.7	0.00	0.00	
6,100.0	0.00	0.00	6,049.6	-174.8	-609.7	-609.7	0.00	0.00	
6,145.4	0.00	0.00	6,095.0	-174.8	-609.7	-609.7	0.00	0.00	Teepee Buttes
6,200.0	0.00	0.00	6,149.6	-174.8	-609.7	-609.7	0.00	0.00	
6,300.0	0.00	0.00	6,249.6	-174.8	-609.7	-609.7	0.00	0.00	
6,400.0	0.00	0.00	6,349.6	-174.8	-609.7	-609.7	0.00	0.00	
6,500.0	0.00	0.00	6,449.6	-174.8	-609.7	-609.7	0.00	0.00	
6,588.2	0.00	0.00	6,537.8	-174.8	-609.7	-609.7	0.00	0.00	Start Build 8.00
6,600.0	0.94	90.00	6,549.6	-174.8	-609.6	-609.6	8.00	8.00	
6,700.0	8.94	90.00	6,649.1	-174.8	-601.0	-601.0	8.00	8.00	
6,800.0	16.94	90.00	6,746.5	-174.8	-578.6	-578.6	8.00	8.00	
6,900.0	24.94	90.00	6,839.8	-174.8	-542.9	-542.9	8.00	8.00	
6,962.2	29.92	90.00	6,895.0	-174.8	-514.3	-514.3	8.00	8.00	Sharon Springs
7,000.0	32.94	90.00	6,927.3	-174.8	-494.5	-494.5	8.00	8.00	
7,042.2	36.32	90.00	6,962.0	-174.8	-470.5	-470.5	8.00	8.00	Niobrara
7,100.0	40.94	90.00	7,007.1	-174.8	-434.5	-434.5	8.00	8.00	
7,136.4	43.85	90.00	7,034.0	-174.8	-409.9	-409.9	8.00	8.00	B Chalk
7,200.0	48.94	90.00	7,077.9	-174.8	-363.9	-363.9	8.00	8.00	
7,300.0	56.94	90.00	7,138.1	-174.8	-284.1	-284.1	8.00	8.00	
7,400.0	64.94	90.00	7,186.6	-174.8	-196.8	-196.8	8.00	8.00	
7,500.0	72.94	90.00	7,222.5	-174.8	-103.6	-103.6	8.00	8.00	
7,523.4	74.82	90.00	7,229.0	-174.8	-81.1	-81.1	8.00	8.00	Ft. Hayes
7,600.0	80.94	90.00	7,245.1	-174.8	-6.2	-6.2	8.00	8.00	
7,620.4	82.58	90.00	7,248.0	-174.8	14.0	14.0	8.00	8.00	Codell
7,700.0	88.94	90.00	7,253.9	-174.8	93.3	93.3	8.00	8.00	
7,713.2	90.00	90.00	7,254.0	-174.8	106.5	106.5	8.00	8.00	LP @ 7254' TVD; 90°
7,800.0	90.00	90.00	7,254.0	-174.8	193.3	193.3	0.00	0.00	
7,900.0	90.00	90.00	7,254.0	-174.8	293.3	293.3	0.00	0.00	
8,000.0	90.00	90.00	7,254.0	-174.8	393.3	393.3	0.00	0.00	
8,100.0	90.00	90.00	7,254.0	-174.7	493.3	493.3	0.00	0.00	
8,200.0	90.00	90.00	7,254.0	-174.7	593.3	593.3	0.00	0.00	
8,300.0	90.00	90.00	7,254.0	-174.7	693.3	693.3	0.00	0.00	
8,400.0	90.00	90.00	7,254.0	-174.7	793.3	793.3	0.00	0.00	
8,500.0	90.00	90.00	7,254.0	-174.7	893.3	893.3	0.00	0.00	
8,600.0	90.00	90.00	7,254.0	-174.7	993.3	993.3	0.00	0.00	
8,700.0	90.00	90.00	7,254.0	-174.7	1,093.3	1,093.3	0.00	0.00	
8,800.0	90.00	90.00	7,254.0	-174.7	1,193.3	1,193.3	0.00	0.00	

## Planning Report

<b>Database:</b>	USA EDM 5000 Multi Users DB	<b>Local Co-ordinate Reference:</b>	Well Zisch 3D-6H-M368
<b>Company:</b>	EnCana Oil & Gas (USA) Inc	<b>TVD Reference:</b>	KB @ 5177.0ft (Ensign )
<b>Project:</b>	DJ Wattenberg	<b>MD Reference:</b>	KB @ 5177.0ft (Ensign )
<b>Site:</b>	S6-T3N-R68W (Zisch)	<b>North Reference:</b>	True
<b>Well:</b>	Zisch 3D-6H-M368	<b>Survey Calculation Method:</b>	Minimum Curvature
<b>Wellbore:</b>	HZ		
<b>Design:</b>	Plan #1		

### Planned Survey

Measured Depth (ft)	Inclination (°)	Azimuth (°)	Vertical Depth (ft)	+N/-S (ft)	+E/-W (ft)	Vertical Section (ft)	Dogleg Rate (°/100ft)	Build Rate (°/100ft)	Comments / Formations
8,900.0	90.00	90.00	7,254.0	-174.7	1,293.3	1,293.3	0.00	0.00	
9,000.0	90.00	90.00	7,254.0	-174.7	1,393.3	1,393.3	0.00	0.00	
9,100.0	90.00	90.00	7,254.0	-174.7	1,493.3	1,493.3	0.00	0.00	
9,200.0	90.00	90.00	7,254.0	-174.7	1,593.3	1,593.3	0.00	0.00	
9,300.0	90.00	90.00	7,254.0	-174.7	1,693.3	1,693.3	0.00	0.00	
9,400.0	90.00	90.00	7,254.0	-174.7	1,793.3	1,793.3	0.00	0.00	
9,500.0	90.00	90.00	7,254.0	-174.7	1,893.3	1,893.3	0.00	0.00	
9,600.0	90.00	90.00	7,254.0	-174.6	1,993.3	1,993.3	0.00	0.00	
9,700.0	90.00	90.00	7,254.0	-174.6	2,093.3	2,093.3	0.00	0.00	
9,800.0	90.00	90.00	7,254.0	-174.6	2,193.3	2,193.3	0.00	0.00	
9,900.0	90.00	90.00	7,254.0	-174.6	2,293.3	2,293.3	0.00	0.00	
10,000.0	90.00	90.00	7,254.0	-174.6	2,393.3	2,393.3	0.00	0.00	
10,100.0	90.00	90.00	7,254.0	-174.6	2,493.3	2,493.3	0.00	0.00	
10,200.0	90.00	90.00	7,254.0	-174.6	2,593.3	2,593.3	0.00	0.00	
10,300.0	90.00	90.00	7,254.0	-174.6	2,693.3	2,693.3	0.00	0.00	
10,400.0	90.00	90.00	7,254.0	-174.6	2,793.3	2,793.3	0.00	0.00	
10,500.0	90.00	90.00	7,254.0	-174.6	2,893.3	2,893.3	0.00	0.00	
10,600.0	90.00	90.00	7,254.0	-174.6	2,993.3	2,993.3	0.00	0.00	
10,700.0	90.00	90.00	7,254.0	-174.6	3,093.3	3,093.3	0.00	0.00	
10,800.0	90.00	90.00	7,254.0	-174.6	3,193.3	3,193.3	0.00	0.00	
10,900.0	90.00	90.00	7,254.0	-174.6	3,293.3	3,293.3	0.00	0.00	
11,000.0	90.00	90.00	7,254.0	-174.6	3,393.3	3,393.3	0.00	0.00	
11,100.0	90.00	90.00	7,254.0	-174.5	3,493.3	3,493.3	0.00	0.00	
11,200.0	90.00	90.00	7,254.0	-174.5	3,593.3	3,593.3	0.00	0.00	
11,300.0	90.00	90.00	7,254.0	-174.5	3,693.3	3,693.3	0.00	0.00	
11,400.0	90.00	90.00	7,254.0	-174.5	3,793.3	3,793.3	0.00	0.00	
11,500.0	90.00	90.00	7,254.0	-174.5	3,893.3	3,893.3	0.00	0.00	
11,600.0	90.00	90.00	7,254.0	-174.5	3,993.3	3,993.3	0.00	0.00	
11,698.8	90.00	90.00	7,254.0	-174.5	4,092.1	4,092.1	0.00	0.00	TD at 11694.8

### Targets

Target Name	Dip Angle (°)	Dip Dir. (°)	TVD (ft)	+N/-S (ft)	+E/-W (ft)	Northing (ft)	Easting (ft)	Latitude	Longitude
- hit/miss target									
- Shape									
Zisch 3D-6H BHL	0.00	0.00	7,254.0	-174.5	4,092.1	1,333,409.94	3,128,924.69	40.247680	-105.038150
- plan hits target center									
- Point									

## Planning Report

<b>Database:</b>	USA EDM 5000 Multi Users DB	<b>Local Co-ordinate Reference:</b>	Well Zisch 3D-6H-M368
<b>Company:</b>	EnCana Oil & Gas (USA) Inc	<b>TVD Reference:</b>	KB @ 5177.0ft (Ensign )
<b>Project:</b>	DJ Wattenberg	<b>MD Reference:</b>	KB @ 5177.0ft (Ensign )
<b>Site:</b>	S6-T3N-R68W (Zisch)	<b>North Reference:</b>	True
<b>Well:</b>	Zisch 3D-6H-M368	<b>Survey Calculation Method:</b>	Minimum Curvature
<b>Wellbore:</b>	HZ		
<b>Design:</b>	Plan #1		

Formations						
Measured Depth (ft)	Vertical Depth (ft)	Name	Lithology	Dip (°)	Dip Direction (°)	
3,966.5	3,924.0	Sussex				
4,199.0	4,153.0	Sussex Marker				
4,446.6	4,398.0	Shannon				
6,145.4	6,095.0	Teepee Buttes				
6,962.2	6,895.0	Sharon Springs				
7,042.2	6,962.0	Niobrara				
7,136.4	7,034.0	B Chalk				
7,523.4	7,229.0	Ft. Hayes				
7,620.4	7,248.0	Codell				

Plan Annotations				
Measured Depth (ft)	Vertical Depth (ft)	Local Coordinates		Comment
		+N/-S (ft)	+E/-W (ft)	
504.0	504.0	0.0	0.0	KOP @ 500'
1,504.0	1,498.9	-24.0	-83.7	EOB; Inc=10°
4,154.0	4,108.7	-150.8	-526.0	Start Drop -1.00
5,154.0	5,103.6	-174.8	-609.7	EOD; Inc=0°
6,588.2	6,537.8	-174.8	-609.7	Start Build 8.00
7,713.2	7,254.0	-174.8	106.5	LP @ 7254' TVD; 90°
11,698.8	7,254.0	-174.5	4,092.1	TD at 11694.8

# **EnCana Oil & Gas (USA) Inc**

**DJ Wattenberg**

**S6-T3N-R68W (Zisch)**

**Zisch 3D-6H-M368**

**HZ**

**Plan #1**

## **Anticollision Report**

**15 March, 2013**

## Anticollision Report

<b>Company:</b>	EnCana Oil & Gas (USA) Inc	<b>Local Co-ordinate Reference:</b>	Well Zisch 3D-6H-M368
<b>Project:</b>	DJ Wattenberg	<b>TVD Reference:</b>	WELL @ 5173.0ft (Original Well Elev)
<b>Reference Site:</b>	S6-T3N-R68W (Zisch)	<b>MD Reference:</b>	WELL @ 5173.0ft (Original Well Elev)
<b>Site Error:</b>	0.0ft	<b>North Reference:</b>	True
<b>Reference Well:</b>	Zisch 3D-6H-M368	<b>Survey Calculation Method:</b>	Minimum Curvature
<b>Well Error:</b>	0.0ft	<b>Output errors are at</b>	2.00 sigma
<b>Reference Wellbore</b>	HZ	<b>Database:</b>	USA EDM 5000 Multi Users DB
<b>Reference Design:</b>	Plan #1	<b>Offset TVD Reference:</b>	Offset Datum

<b>Reference</b>	Plan #1		
<b>Filter type:</b>	NO GLOBAL FILTER: Using user defined selection & filtering criteria		
<b>Interpolation Method:</b>	MD Interval 100.0ft	<b>Error Model:</b>	Systematic Ellipse
<b>Depth Range:</b>	Unlimited	<b>Scan Method:</b>	Closest Approach 3D
<b>Results Limited by:</b>	Maximum center-center distance of 500.0ft	<b>Error Surface:</b>	Elliptical Conic
<b>Warning Levels Evaluated at:</b>	2.00 Sigma		

<b>Survey Tool Program</b>	<b>Date</b>	3/15/2013		
<b>From (ft)</b>	<b>To (ft)</b>	<b>Survey (Wellbore)</b>	<b>Tool Name</b>	<b>Description</b>
0.0	11,694.8	Plan #1 (HZ)	MWD	Geolink MWD

<b>Summary</b>						
<b>Site Name</b>	<b>Reference Measured Depth (ft)</b>	<b>Offset Measured Depth (ft)</b>	<b>Distance Between Centres (ft)</b>	<b>Distance Between Ellipses (ft)</b>	<b>Separation Factor</b>	<b>Warning</b>
<b>Offset Well - Wellbore - Design</b>						
S6-T3N-R68W (Zisch)						
SUMMER 6-1 (EXISTING) - EXISTING - NO SURVEYS	500.0	491.0	342.3	340.6	199.880	CC
SUMMER 6-1 (EXISTING) - EXISTING - NO SURVEYS	600.0	591.0	342.6	340.5	166.188	ES
SUMMER 6-1 (EXISTING) - EXISTING - NO SURVEYS	2,400.0	2,372.3	487.7	478.5	52.983	SF
Zisch 3A-6H-M368 - HZ - Plan #1	165.6	165.6	32.8	32.2	60.163	CC
Zisch 3A-6H-M368 - HZ - Plan #1	200.0	200.0	32.8	32.1	49.313	ES
Zisch 3A-6H-M368 - HZ - Plan #1	700.0	696.5	52.4	50.0	21.613	SF
Zisch 3B-6H-M368 - HZ - Plan #1	265.3	269.3	21.9	21.0	24.428	CC
Zisch 3B-6H-M368 - HZ - Plan #1	300.0	304.0	21.9	20.8	21.515	ES
Zisch 3B-6H-M368 - HZ - Plan #1	600.0	603.0	27.7	25.7	13.407	SF
Zisch 3C-6H-M368 - HZ - Plan #1	465.3	469.3	10.9	9.3	6.862	CC
Zisch 3C-6H-M368 - HZ - Plan #1	500.0	504.0	10.9	9.2	6.377	ES
Zisch 3C-6H-M368 - HZ - Plan #1	11,694.8	11,498.2	407.4	221.1	2.187	SF

# Anticollision Report

<b>Company:</b>	EnCana Oil & Gas (USA) Inc	<b>Local Co-ordinate Reference:</b>	Well Zisch 3D-6H-M368
<b>Project:</b>	DJ Wattenberg	<b>TVD Reference:</b>	WELL @ 5173.0ft (Original Well Elev)
<b>Reference Site:</b>	S6-T3N-R68W (Zisch)	<b>MD Reference:</b>	WELL @ 5173.0ft (Original Well Elev)
<b>Site Error:</b>	0.0ft	<b>North Reference:</b>	True
<b>Reference Well:</b>	Zisch 3D-6H-M368	<b>Survey Calculation Method:</b>	Minimum Curvature
<b>Well Error:</b>	0.0ft	<b>Output errors are at</b>	2.00 sigma
<b>Reference Wellbore</b>	HZ	<b>Database:</b>	USA EDM 5000 Multi Users DB
<b>Reference Design:</b>	Plan #1	<b>Offset TVD Reference:</b>	Offset Datum

Offset Design S6-T3N-R68W (Zisch) - SUMMER 6-1 (EXISTING) - EXISTING - NO SURVEYS														Offset Site Error:	0.0 ft
Survey Program: 7351-MWD														Offset Well Error:	0.0 ft
Reference		Offset		Semi Major Axis		Highside Toolface (°)	Distance		Total Uncertainty Axis	Separation Factor	Warning				
Measured Depth (ft)	Vertical Depth (ft)	Measured Depth (ft)	Vertical Depth (ft)	Reference (ft)	Offset (ft)		Offset Wellbore Centre +N/-S (ft)	+E/-W (ft)							
0.0	0.0	0.0	0.0	0.0	0.0	5.66	340.6	33.8	342.4						
100.0	100.0	91.0	91.0	0.2	0.2	5.66	340.6	33.8	342.3	0.32	1,078.474				
200.0	200.0	191.0	191.0	0.3	0.3	5.66	340.6	33.8	342.3	0.67	513.828				
300.0	300.0	291.0	291.0	0.5	0.5	5.66	340.6	33.8	342.3	1.01	337.255				
400.0	400.0	391.0	391.0	0.7	0.7	5.66	340.6	33.8	342.3	1.36	251.001				
500.0	500.0	491.0	491.0	0.9	0.9	5.66	340.6	33.8	342.3	1.71	199.880 CC				
600.0	600.0	591.0	591.0	1.0	1.0	111.80	340.6	33.8	342.6	2.06	166.188 ES				
700.0	700.0	691.0	691.0	1.2	1.2	112.19	340.6	33.8	343.6	2.41	142.405				
800.0	799.9	790.9	790.9	1.4	1.4	112.85	340.6	33.8	345.3	2.77	124.713				
900.0	899.7	890.7	890.7	1.6	1.6	113.75	340.6	33.8	347.7	3.13	111.040				
1,000.0	999.4	990.4	990.4	1.8	1.7	114.89	340.6	33.8	350.9	3.50	100.175				
1,100.0	1,098.9	1,089.9	1,089.9	2.0	1.9	116.25	340.6	33.8	355.1	3.89	91.374				
1,200.0	1,198.3	1,189.3	1,189.3	2.2	2.1	117.81	340.6	33.8	360.2	4.28	84.155				
1,300.0	1,297.4	1,288.4	1,288.4	2.5	2.2	119.55	340.6	33.8	366.5	4.69	78.195				
1,400.0	1,396.3	1,387.3	1,387.3	2.8	2.4	121.44	340.6	33.8	374.1	5.11	73.268				
1,500.0	1,494.9	1,485.9	1,485.9	3.1	2.6	123.45	340.6	33.8	383.0	5.53	69.210				
1,600.0	1,593.4	1,584.4	1,584.4	3.4	2.8	125.54	340.6	33.8	393.0	5.96	65.913				
1,700.0	1,691.9	1,682.9	1,682.9	3.7	2.9	127.53	340.6	33.8	403.4	6.39	63.173				
1,800.0	1,790.4	1,781.4	1,781.4	4.1	3.1	129.42	340.6	33.8	414.3	6.81	60.884				
1,900.0	1,888.9	1,879.9	1,879.9	4.4	3.3	131.21	340.6	33.8	425.7	7.22	58.965				
2,000.0	1,987.3	1,978.3	1,978.3	4.7	3.4	132.91	340.6	33.8	437.4	7.63	57.348				
2,100.0	2,085.8	2,076.8	2,076.8	5.1	3.6	134.51	340.6	33.8	449.5	8.03	55.980				
2,200.0	2,184.3	2,175.3	2,175.3	5.4	3.8	136.04	340.6	33.8	461.9	8.43	54.818				
2,300.0	2,282.8	2,273.8	2,273.8	5.8	4.0	137.48	340.6	33.8	474.7	8.82	53.829				
2,400.0	2,381.3	2,372.3	2,372.3	6.1	4.1	138.85	340.6	33.8	487.7	9.20	52.983 SF				

# Anticollision Report

<b>Company:</b>	EnCana Oil & Gas (USA) Inc	<b>Local Co-ordinate Reference:</b>	Well Zisch 3D-6H-M368
<b>Project:</b>	DJ Wattenberg	<b>TVD Reference:</b>	WELL @ 5173.0ft (Original Well Elev)
<b>Reference Site:</b>	S6-T3N-R68W (Zisch)	<b>MD Reference:</b>	WELL @ 5173.0ft (Original Well Elev)
<b>Site Error:</b>	0.0ft	<b>North Reference:</b>	True
<b>Reference Well:</b>	Zisch 3D-6H-M368	<b>Survey Calculation Method:</b>	Minimum Curvature
<b>Well Error:</b>	0.0ft	<b>Output errors are at</b>	2.00 sigma
<b>Reference Wellbore</b>	HZ	<b>Database:</b>	USA EDM 5000 Multi Users DB
<b>Reference Design:</b>	Plan #1	<b>Offset TVD Reference:</b>	Offset Datum

Offset Design S6-T3N-R68W (Zisch) - Zisch 3A-6H-M368 - HZ - Plan #1													Offset Site Error:	0.0 ft
Survey Program: 0-MWD													Offset Well Error:	0.0 ft
Reference		Offset		Semi Major Axis			Distance						Warning	
Measured Depth (ft)	Vertical Depth (ft)	Measured Depth (ft)	Vertical Depth (ft)	Reference (ft)	Offset (ft)	Highside Toolface (°)	Offset Wellbore Centre +N/-S (ft)	+E/-W (ft)	Between Centres (ft)	Between Ellipses (ft)	Total Uncertainty Axis	Separation Factor		
0.0	0.0	0.0	0.0	0.0	0.0	0.00	32.8	0.0	32.8					
100.0	100.0	100.0	100.0	0.2	0.2	0.00	32.8	0.0	32.8	32.5	0.32	103.797		
165.6	165.6	165.6	165.6	0.3	0.3	0.00	32.8	0.0	32.8	32.2	0.55	60.163 CC		
200.0	200.0	200.0	200.0	0.3	0.3	0.00	32.8	0.0	32.8	32.1	0.66	49.313 ES		
300.0	300.0	299.5	299.5	0.5	0.5	-0.92	33.5	-0.5	33.5	32.5	1.01	33.091		
400.0	400.0	399.0	398.9	0.7	0.7	-3.36	35.7	-2.1	35.7	34.4	1.36	26.206		
500.0	500.0	498.3	498.2	0.9	0.9	-6.77	39.2	-4.7	39.5	37.8	1.72	22.987		
600.0	600.0	597.5	597.2	1.0	1.1	96.48	44.1	-8.2	45.0	43.0	2.07	21.802		
700.0	700.0	696.5	695.8	1.2	1.3	95.43	50.4	-12.8	52.4	50.0	2.42	21.613 SF		
800.0	799.9	795.2	794.1	1.4	1.5	95.55	58.0	-18.3	61.4	58.6	2.79	22.017		
900.0	899.7	893.6	891.9	1.6	1.8	96.38	67.0	-24.9	72.2	69.0	3.17	22.768		
1,000.0	999.4	991.6	989.0	1.8	2.0	97.59	77.3	-32.3	84.7	81.1	3.57	23.715		
1,100.0	1,098.9	1,089.1	1,085.5	2.0	2.3	98.95	88.9	-40.7	99.0	95.0	4.00	24.763		
1,200.0	1,198.3	1,186.2	1,181.3	2.2	2.6	100.35	101.7	-50.1	115.1	110.6	4.45	25.847		
1,300.0	1,297.4	1,282.8	1,276.3	2.5	3.0	101.70	115.8	-60.3	133.0	128.1	4.94	26.922		
1,400.0	1,396.3	1,378.8	1,370.4	2.8	3.3	102.96	131.0	-71.4	152.7	147.3	5.46	27.959		
1,500.0	1,494.9	1,474.1	1,463.5	3.1	3.7	104.12	147.5	-83.3	174.3	168.3	6.02	28.942		
1,600.0	1,593.4	1,568.8	1,555.8	3.4	4.1	105.15	165.0	-96.1	197.5	190.9	6.61	29.893		
1,700.0	1,691.9	1,663.0	1,647.1	3.7	4.5	105.72	183.7	-109.6	222.0	214.8	7.20	30.820		
1,800.0	1,790.4	1,758.6	1,739.4	4.1	5.0	106.00	203.6	-124.1	247.5	239.7	7.81	31.687		
1,900.0	1,888.9	1,855.3	1,832.8	4.4	5.4	106.22	223.9	-138.8	273.1	264.7	8.43	32.401		
2,000.0	1,987.3	1,951.9	1,926.2	4.7	5.9	106.40	244.1	-153.5	298.7	289.6	9.05	32.997		
2,100.0	2,085.8	2,048.6	2,019.5	5.1	6.3	106.55	264.4	-168.2	324.3	314.6	9.68	33.500		
2,200.0	2,184.3	2,145.3	2,112.9	5.4	6.8	106.68	284.6	-182.9	349.9	339.6	10.31	33.930		
2,300.0	2,282.8	2,241.9	2,206.3	5.8	7.3	106.79	304.8	-197.7	375.5	364.6	10.95	34.301		
2,400.0	2,381.3	2,338.6	2,299.6	6.1	7.7	106.89	325.1	-212.4	401.1	389.5	11.59	34.624		
2,500.0	2,479.7	2,435.2	2,393.0	6.4	8.2	106.98	345.3	-227.1	426.7	414.5	12.23	34.906		
2,600.0	2,578.2	2,531.9	2,486.4	6.8	8.7	107.05	365.6	-241.8	452.4	439.5	12.87	35.156		
2,700.0	2,676.7	2,628.6	2,579.7	7.1	9.1	107.12	385.8	-256.5	478.0	464.5	13.51	35.377		

# Anticollision Report

<b>Company:</b>	EnCana Oil & Gas (USA) Inc	<b>Local Co-ordinate Reference:</b>	Well Zisch 3D-6H-M368
<b>Project:</b>	DJ Wattenberg	<b>TVD Reference:</b>	WELL @ 5173.0ft (Original Well Elev)
<b>Reference Site:</b>	S6-T3N-R68W (Zisch)	<b>MD Reference:</b>	WELL @ 5173.0ft (Original Well Elev)
<b>Site Error:</b>	0.0ft	<b>North Reference:</b>	True
<b>Reference Well:</b>	Zisch 3D-6H-M368	<b>Survey Calculation Method:</b>	Minimum Curvature
<b>Well Error:</b>	0.0ft	<b>Output errors are at</b>	2.00 sigma
<b>Reference Wellbore</b>	HZ	<b>Database:</b>	USA EDM 5000 Multi Users DB
<b>Reference Design:</b>	Plan #1	<b>Offset TVD Reference:</b>	Offset Datum

Offset Design S6-T3N-R68W (Zisch) - Zisch 3B-6H-M368 - HZ - Plan #1													Offset Site Error:	0.0 ft
Survey Program: 0-MWD													Offset Well Error:	0.0 ft
Reference		Offset		Semi Major Axis			Distance						Warning	
Measured Depth (ft)	Vertical Depth (ft)	Measured Depth (ft)	Vertical Depth (ft)	Reference (ft)	Offset (ft)	Highside Toolface (°)	Offset Wellbore Centre +N/-S (ft)	+E/-W (ft)	Between Centres (ft)	Between Ellipses (ft)	Total Uncertainty Axis	Separation Factor		
0.0	0.0	4.0	4.0	0.0	0.0	0.00	21.9	0.0	21.9					
100.0	100.0	104.0	104.0	0.2	0.2	0.00	21.9	0.0	21.9	21.5	0.32	68.796		
200.0	200.0	204.0	204.0	0.3	0.3	0.00	21.9	0.0	21.9	21.2	0.67	32.777		
265.3	265.3	269.3	269.3	0.4	0.4	0.00	21.9	0.0	21.9	21.0	0.89	24.428 CC		
300.0	300.0	304.0	304.0	0.5	0.5	0.00	21.9	0.0	21.9	20.8	1.02	21.515 ES		
400.0	400.0	403.7	403.7	0.7	0.7	-1.85	22.5	-0.7	22.5	21.1	1.36	16.462		
500.0	500.0	503.4	503.4	0.9	0.9	-6.58	24.1	-2.8	24.3	22.6	1.71	14.186		
600.0	600.0	603.0	602.9	1.0	1.0	94.84	26.9	-6.2	27.7	25.7	2.07	13.407 SF		
700.0	700.0	702.5	702.1	1.2	1.2	92.54	30.8	-10.9	32.7	30.3	2.43	13.488		
800.0	799.9	801.7	801.1	1.4	1.5	91.90	35.8	-16.9	39.2	36.4	2.80	14.029		
900.0	899.7	900.8	899.7	1.6	1.7	92.28	41.9	-24.3	47.2	44.0	3.18	14.826		
1,000.0	999.4	1,000.0	998.3	1.8	1.9	93.24	49.0	-33.0	56.6	53.0	3.59	15.759		
1,100.0	1,098.9	1,098.2	1,095.7	2.0	2.2	94.43	57.2	-42.8	67.4	63.4	4.02	16.759		
1,200.0	1,198.3	1,196.5	1,192.8	2.2	2.5	95.71	66.4	-54.0	79.8	75.3	4.49	17.768		
1,300.0	1,297.4	1,294.4	1,289.4	2.5	2.8	96.97	76.6	-66.4	93.6	88.6	4.99	18.752		
1,400.0	1,396.3	1,393.2	1,386.7	2.8	3.1	98.44	87.5	-79.7	108.5	102.9	5.53	19.602		
1,500.0	1,494.9	1,491.9	1,483.9	3.1	3.4	100.33	98.4	-92.9	123.7	117.6	6.11	20.235		
1,600.0	1,593.4	1,590.6	1,581.1	3.4	3.8	102.27	109.3	-106.1	139.2	132.5	6.71	20.747		
1,700.0	1,691.9	1,689.3	1,678.3	3.7	4.1	103.83	120.2	-119.3	154.8	147.5	7.31	21.169		
1,800.0	1,790.4	1,788.0	1,775.5	4.1	4.4	105.10	131.1	-132.6	170.5	162.6	7.92	21.521		
1,900.0	1,888.9	1,886.7	1,872.7	4.4	4.8	106.15	142.0	-145.8	186.3	177.8	8.54	21.819		
2,000.0	1,987.3	1,985.4	1,969.9	4.7	5.1	107.04	152.9	-159.0	202.2	193.0	9.16	22.074		
2,100.0	2,085.8	2,084.1	2,067.1	5.1	5.4	107.80	163.8	-172.2	218.0	208.3	9.78	22.294		
2,200.0	2,184.3	2,182.8	2,164.3	5.4	5.8	108.46	174.7	-185.5	233.9	223.5	10.40	22.486		
2,300.0	2,282.8	2,281.5	2,261.5	5.8	6.1	109.03	185.6	-198.7	249.9	238.9	11.03	22.655		
2,400.0	2,381.3	2,380.2	2,358.7	6.1	6.5	109.54	196.5	-211.9	265.8	254.2	11.66	22.805		
2,500.0	2,479.7	2,478.9	2,455.9	6.4	6.8	109.99	207.4	-225.1	281.8	269.5	12.29	22.938		
2,600.0	2,578.2	2,577.6	2,553.1	6.8	7.2	110.39	218.3	-238.3	297.8	284.9	12.92	23.058		
2,700.0	2,676.7	2,676.2	2,650.3	7.1	7.5	110.74	229.2	-251.6	313.8	300.3	13.55	23.166		
2,800.0	2,775.2	2,774.9	2,747.5	7.5	7.8	111.07	240.1	-264.8	329.8	315.7	14.18	23.264		
2,900.0	2,873.7	2,873.6	2,844.7	7.8	8.2	111.36	251.0	-278.0	345.9	331.1	14.81	23.354		
3,000.0	2,972.1	2,972.3	2,941.8	8.2	8.5	111.63	261.9	-291.2	361.9	346.5	15.44	23.435		
3,100.0	3,070.6	3,071.0	3,039.0	8.5	8.9	111.88	272.8	-304.5	377.9	361.9	16.08	23.510		
3,200.0	3,169.1	3,169.7	3,136.2	8.9	9.2	112.10	283.7	-317.7	394.0	377.3	16.71	23.579		
3,300.0	3,267.6	3,268.4	3,233.4	9.2	9.6	112.31	294.6	-330.9	410.0	392.7	17.34	23.642		
3,400.0	3,366.1	3,367.1	3,330.6	9.6	9.9	112.50	305.5	-344.1	426.1	408.1	17.98	23.701		
3,500.0	3,464.5	3,465.8	3,427.8	9.9	10.3	112.68	316.4	-357.4	442.2	423.6	18.61	23.756		
3,600.0	3,563.0	3,564.5	3,525.0	10.3	10.6	112.84	327.3	-370.6	458.2	439.0	19.25	23.807		
3,700.0	3,661.5	3,663.2	3,622.2	10.6	10.9	113.00	338.2	-383.8	474.3	454.4	19.88	23.855		
3,800.0	3,760.0	3,761.9	3,719.4	11.0	11.3	113.14	349.1	-397.0	490.4	469.9	20.52	23.899		

# Anticollision Report

<b>Company:</b>	EnCana Oil & Gas (USA) Inc	<b>Local Co-ordinate Reference:</b>	Well Zisch 3D-6H-M368
<b>Project:</b>	DJ Wattenberg	<b>TVD Reference:</b>	WELL @ 5173.0ft (Original Well Elev)
<b>Reference Site:</b>	S6-T3N-R68W (Zisch)	<b>MD Reference:</b>	WELL @ 5173.0ft (Original Well Elev)
<b>Site Error:</b>	0.0ft	<b>North Reference:</b>	True
<b>Reference Well:</b>	Zisch 3D-6H-M368	<b>Survey Calculation Method:</b>	Minimum Curvature
<b>Well Error:</b>	0.0ft	<b>Output errors are at</b>	2.00 sigma
<b>Reference Wellbore</b>	HZ	<b>Database:</b>	USA EDM 5000 Multi Users DB
<b>Reference Design:</b>	Plan #1	<b>Offset TVD Reference:</b>	Offset Datum

Offset Design S6-T3N-R68W (Zisch) - Zisch 3C-6H-M368 - HZ - Plan #1													Offset Site Error:	0.0 ft
Survey Program:		0-MWD										Offset Well Error:	0.0 ft	
Reference		Offset		Semi Major Axis			Distance				Total Uncertainty Axis	Separation Factor	Warning	
Measured Depth (ft)	Vertical Depth (ft)	Measured Depth (ft)	Vertical Depth (ft)	Reference (ft)	Offset (ft)	Highside Toolface (°)	Offset Wellbore Centre +N/-S (ft)	+E/-W (ft)	Between Centres (ft)	Between Ellipses (ft)				
0.0	0.0	4.0	4.0	0.0	0.0	0.00	10.9	0.0	10.9					
100.0	100.0	104.0	104.0	0.2	0.2	0.00	10.9	0.0	10.9	10.6	0.32	34.405		
200.0	200.0	204.0	204.0	0.3	0.3	0.00	10.9	0.0	10.9	10.3	0.67	16.392		
300.0	300.0	304.0	304.0	0.5	0.5	0.00	10.9	0.0	10.9	9.9	1.02	10.759		
400.0	400.0	404.0	404.0	0.7	0.7	0.00	10.9	0.0	10.9	9.6	1.36	8.007		
465.3	465.3	469.3	469.3	0.8	0.8	0.00	10.9	0.0	10.9	9.3	1.59	6.862 CC		
500.0	500.0	504.0	504.0	0.9	0.9	-0.01	10.9	0.0	10.9	9.2	1.71	6.377 ES		
600.0	600.0	603.9	603.9	1.0	1.0	105.63	11.2	-0.9	11.4	9.3	2.06	5.530		
700.0	700.0	703.9	703.8	1.2	1.2	105.31	11.9	-3.5	12.8	10.4	2.42	5.305		
800.0	799.9	803.8	803.6	1.4	1.4	105.07	13.0	-7.8	15.2	12.4	2.78	5.453		
900.0	899.7	903.7	903.3	1.6	1.6	104.92	14.6	-13.7	18.5	15.3	3.17	5.832		
1,000.0	999.4	1,003.5	1,002.8	1.8	1.8	104.83	16.6	-21.4	22.7	19.1	3.57	6.350		
1,100.0	1,098.9	1,103.2	1,102.1	2.0	2.0	104.78	19.1	-30.6	27.8	23.8	4.00	6.946		
1,200.0	1,198.3	1,202.9	1,201.1	2.2	2.2	104.75	22.1	-41.6	33.9	29.4	4.47	7.575		
1,300.0	1,297.4	1,302.5	1,299.8	2.5	2.5	104.73	25.4	-54.2	40.9	35.9	4.98	8.207		
1,400.0	1,396.3	1,401.9	1,398.2	2.8	2.8	104.72	29.3	-68.4	48.8	43.2	5.53	8.820		
1,500.0	1,494.9	1,501.3	1,496.2	3.1	3.1	104.70	33.5	-84.3	57.6	51.5	6.12	9.400		
1,600.0	1,593.4	1,600.5	1,593.8	3.4	3.4	104.05	38.2	-101.8	67.1	60.3	6.76	9.932		
1,700.0	1,691.9	1,699.6	1,690.9	3.7	3.8	102.34	43.3	-120.9	77.1	69.7	7.41	10.404		
1,800.0	1,790.4	1,799.1	1,788.1	4.1	4.2	100.48	48.7	-140.8	87.5	79.4	8.08	10.830		
1,900.0	1,888.9	1,898.5	1,885.4	4.4	4.5	99.02	54.0	-160.8	98.0	89.2	8.76	11.192		
2,000.0	1,987.3	1,997.9	1,982.6	4.7	4.9	97.84	59.4	-180.8	108.5	99.1	9.43	11.503		
2,100.0	2,085.8	2,097.3	2,079.9	5.1	5.3	96.86	64.7	-200.7	119.1	108.9	10.11	11.771		
2,200.0	2,184.3	2,196.7	2,177.1	5.4	5.7	96.05	70.1	-220.7	129.6	118.8	10.80	12.005		
2,300.0	2,282.8	2,296.2	2,274.4	5.8	6.1	95.36	75.4	-240.7	140.2	128.7	11.48	12.211		
2,400.0	2,381.3	2,395.6	2,371.6	6.1	6.5	94.77	80.8	-260.6	150.8	138.7	12.17	12.393		
2,500.0	2,479.7	2,495.0	2,468.9	6.4	6.9	94.25	86.1	-280.6	161.5	148.6	12.86	12.554		
2,600.0	2,578.2	2,594.4	2,566.1	6.8	7.3	93.80	91.5	-300.6	172.1	158.6	13.55	12.699		
2,700.0	2,676.7	2,693.9	2,663.4	7.1	7.7	93.40	96.8	-320.5	182.8	168.5	14.25	12.830		
2,800.0	2,775.2	2,793.3	2,760.6	7.5	8.1	93.04	102.2	-340.5	193.4	178.5	14.94	12.947		
2,900.0	2,873.7	2,892.7	2,857.9	7.8	8.5	92.73	107.5	-360.5	204.1	188.5	15.63	13.055		
3,000.0	2,972.1	2,992.1	2,955.1	8.2	8.9	92.44	112.9	-380.4	214.8	198.4	16.33	13.152		
3,100.0	3,070.6	3,091.6	3,052.4	8.5	9.3	92.18	118.2	-400.4	225.5	208.4	17.03	13.242		
3,200.0	3,169.1	3,191.0	3,149.6	8.9	9.7	91.94	123.6	-420.4	236.1	218.4	17.72	13.324		
3,300.0	3,267.6	3,290.4	3,246.9	9.2	10.1	91.73	128.9	-440.3	246.8	228.4	18.42	13.400		
3,400.0	3,366.1	3,389.8	3,344.1	9.6	10.5	91.53	134.3	-460.3	257.5	238.4	19.12	13.470		
3,500.0	3,464.5	3,489.2	3,441.4	9.9	10.9	91.35	139.6	-480.3	268.2	248.4	19.82	13.535		
3,600.0	3,563.0	3,589.6	3,539.6	10.3	11.3	91.20	145.0	-500.3	278.8	258.3	20.51	13.592		
3,700.0	3,661.5	3,691.6	3,639.7	10.6	11.6	91.32	150.1	-519.2	288.8	267.5	21.21	13.615		
3,800.0	3,760.0	3,793.7	3,740.2	11.0	12.0	91.74	154.7	-536.5	297.8	275.9	21.90	13.598		
3,900.0	3,858.5	3,895.8	3,841.1	11.3	12.3	92.44	158.8	-552.0	306.1	283.5	22.59	13.549		
4,000.0	3,957.0	3,998.0	3,942.2	11.7	12.6	93.39	162.5	-565.8	313.5	290.3	23.27	13.474		
4,100.0	4,055.4	4,100.1	4,043.5	12.0	12.9	94.59	165.8	-577.8	320.3	296.4	23.94	13.380		
4,200.0	4,153.9	4,202.1	4,145.0	12.4	13.1	96.01	168.5	-588.1	326.4	301.8	24.59	13.277		
4,300.0	4,252.7	4,304.0	4,246.5	12.7	13.3	97.43	170.8	-596.6	331.8	306.7	25.17	13.184		
4,400.0	4,351.7	4,405.9	4,348.2	13.0	13.5	98.78	172.6	-603.4	336.5	310.8	25.70	13.095		
4,500.0	4,451.0	4,507.8	4,449.9	13.2	13.7	100.08	174.0	-608.5	340.4	314.2	26.16	13.010		
4,600.0	4,550.4	4,609.5	4,551.6	13.5	13.8	101.33	174.8	-611.7	343.5	316.9	26.57	12.926		
4,700.0	4,650.1	4,711.3	4,653.3	13.7	13.9	102.54	175.3	-613.3	345.8	318.9	26.93	12.841		
4,800.0	4,749.8	4,811.8	4,753.8	13.9	14.0	103.67	175.3	-613.4	347.5	320.2	27.24	12.754		
4,900.0	4,849.7	4,911.6	4,853.7	14.0	14.1	104.51	175.3	-613.4	348.7	321.2	27.52	12.670		
5,000.0	4,949.6	5,011.6	4,953.6	14.2	14.2	105.08	175.3	-613.4	349.6	321.8	27.78	12.585		

CC - Min centre to center distance or convergent point, SF - min separation factor, ES - min ellipse separation

# Anticollision Report

<b>Company:</b>	EnCana Oil & Gas (USA) Inc	<b>Local Co-ordinate Reference:</b>	Well Zisch 3D-6H-M368
<b>Project:</b>	DJ Wattenberg	<b>TVD Reference:</b>	WELL @ 5173.0ft (Original Well Elev)
<b>Reference Site:</b>	S6-T3N-R68W (Zisch)	<b>MD Reference:</b>	WELL @ 5173.0ft (Original Well Elev)
<b>Site Error:</b>	0.0ft	<b>North Reference:</b>	True
<b>Reference Well:</b>	Zisch 3D-6H-M368	<b>Survey Calculation Method:</b>	Minimum Curvature
<b>Well Error:</b>	0.0ft	<b>Output errors are at</b>	2.00 sigma
<b>Reference Wellbore</b>	HZ	<b>Database:</b>	USA EDM 5000 Multi Users DB
<b>Reference Design:</b>	Plan #1	<b>Offset TVD Reference:</b>	Offset Datum

Offset Design S6-T3N-R68W (Zisch) - Zisch 3C-6H-M368 - HZ - Plan #1												Offset Site Error:	0.0 ft
Survey Program: 0-MWD												Offset Well Error:	0.0 ft
Reference		Offset		Semi Major Axis		Distance							
Measured Depth (ft)	Vertical Depth (ft)	Measured Depth (ft)	Vertical Depth (ft)	Reference (ft)	Offset (ft)	Highside Toolface (°)	Offset Wellbore Centre +N/-S (ft)	+E/-W (ft)	Between Centres (ft)	Between Ellipses (ft)	Total Uncertainty Axis	Separation Factor	Warning
5,100.0	5,049.6	5,111.5	5,053.6	14.3	14.4	105.36	175.3	-613.4	350.1	322.1	28.01	12.497	
5,200.0	5,149.6	5,211.5	5,153.6	14.4	14.5	-0.61	175.3	-613.4	350.1	331.1	19.05	18.380	
5,300.0	5,249.6	5,311.5	5,253.6	14.5	14.6	-0.61	175.3	-613.4	350.1	330.8	19.38	18.065	
5,400.0	5,349.6	5,411.5	5,353.6	14.6	14.7	-0.61	175.3	-613.4	350.1	330.4	19.72	17.759	
5,500.0	5,449.6	5,511.5	5,453.6	14.7	14.8	-0.61	175.3	-613.4	350.1	330.1	20.05	17.464	
5,600.0	5,549.6	5,611.5	5,553.6	14.9	14.9	-0.61	175.3	-613.4	350.1	329.8	20.38	17.177	
5,700.0	5,649.6	5,711.5	5,653.6	15.0	15.0	-0.61	175.3	-613.4	350.1	329.4	20.72	16.900	
5,800.0	5,749.6	5,811.5	5,753.6	15.1	15.1	-0.61	175.3	-613.4	350.1	329.1	21.05	16.631	
5,900.0	5,849.6	5,911.5	5,853.6	15.2	15.3	-0.61	175.3	-613.4	350.1	328.7	21.39	16.370	
6,000.0	5,949.6	6,011.5	5,953.6	15.3	15.4	-0.61	175.3	-613.4	350.1	328.4	21.72	16.117	
6,100.0	6,049.6	6,111.5	6,053.6	15.4	15.5	-0.61	175.3	-613.4	350.1	328.1	22.06	15.871	
6,200.0	6,149.6	6,211.5	6,153.6	15.6	15.6	-0.61	175.3	-613.4	350.1	327.7	22.40	15.632	
6,300.0	6,249.6	6,311.5	6,253.6	15.7	15.7	-0.61	175.3	-613.4	350.1	327.4	22.74	15.401	
6,400.0	6,349.6	6,411.7	6,353.7	15.8	15.8	-0.54	175.3	-613.0	350.1	327.1	23.07	15.175	
6,448.2	6,397.8	6,459.8	6,401.8	15.9	15.8	0.00	175.3	-609.7	350.1	326.9	23.24	15.068	
6,500.0	6,449.6	6,510.9	6,452.4	15.9	15.8	1.15	175.3	-602.7	350.2	326.8	23.42	14.954	
6,600.0	6,549.6	6,605.7	6,544.4	16.1	15.6	-85.18	175.3	-580.2	351.5	320.4	31.03	11.325	
6,700.0	6,649.1	6,696.2	6,628.8	16.0	15.3	-80.91	175.3	-547.6	354.9	324.3	30.57	11.608	
6,800.0	6,746.4	6,784.1	6,706.1	15.9	14.9	-76.91	175.3	-506.0	360.1	330.2	29.83	12.072	
6,900.0	6,839.5	6,869.6	6,775.9	15.5	14.5	-73.27	175.3	-456.7	366.4	337.6	28.88	12.690	
7,000.0	6,926.6	6,950.0	6,835.8	15.1	14.2	-70.11	175.3	-403.1	373.5	345.7	27.85	13.415	
7,100.0	7,006.2	7,035.2	6,892.3	14.7	13.8	-67.18	175.3	-339.3	380.8	354.0	26.79	14.213	
7,200.0	7,076.5	7,115.9	6,938.4	14.2	13.6	-64.78	175.3	-273.2	387.9	361.9	25.93	14.961	
7,300.0	7,136.2	7,200.0	6,978.2	13.9	13.4	-62.73	175.3	-199.2	394.3	368.9	25.36	15.548	
7,400.0	7,184.3	7,274.2	7,006.0	13.8	13.6	-61.27	175.3	-130.4	399.7	374.4	25.28	15.808	
7,500.0	7,219.7	7,350.0	7,026.8	14.1	14.0	-60.18	175.3	-57.6	403.8	378.1	25.74	15.688	
7,600.0	7,241.7	7,430.0	7,040.3	14.9	14.8	-59.46	175.3	21.3	406.5	379.7	26.86	15.138	
7,700.0	7,249.9	7,507.5	7,045.0	16.1	15.7	-59.17	175.3	98.6	407.7	379.2	28.52	14.292	
7,800.0	7,250.0	7,606.3	7,045.0	17.5	17.1	-59.16	175.3	197.3	407.7	376.7	30.95	13.174	
7,900.0	7,250.0	7,706.3	7,045.0	19.2	18.8	-59.16	175.3	297.3	407.7	373.9	33.74	12.082	
8,000.0	7,250.0	7,806.3	7,045.0	21.0	20.6	-59.16	175.3	397.3	407.7	370.9	36.82	11.072	
8,100.0	7,250.0	7,906.3	7,045.0	22.9	22.6	-59.16	175.3	497.3	407.7	367.6	40.11	10.163	
8,200.0	7,250.0	8,006.3	7,045.0	24.9	24.6	-59.16	175.3	597.3	407.7	364.1	43.57	9.356	
8,300.0	7,250.0	8,106.3	7,045.0	27.0	26.7	-59.16	175.3	697.3	407.7	360.5	47.16	8.644	
8,400.0	7,250.0	8,206.3	7,045.0	29.2	28.9	-59.16	175.3	797.3	407.6	356.8	50.85	8.016	
8,500.0	7,250.0	8,306.3	7,045.0	31.4	31.1	-59.16	175.3	897.3	407.6	353.0	54.63	7.463	
8,600.0	7,250.0	8,406.3	7,045.0	33.6	33.4	-59.16	175.3	997.3	407.6	349.2	58.46	6.972	
8,700.0	7,250.0	8,506.3	7,045.0	35.9	35.6	-59.15	175.3	1,097.3	407.6	345.3	62.36	6.537	
8,800.0	7,250.0	8,606.3	7,045.0	38.2	37.9	-59.15	175.3	1,197.3	407.6	341.3	66.29	6.149	
8,900.0	7,250.0	8,706.3	7,045.0	40.5	40.3	-59.15	175.3	1,297.3	407.6	337.3	70.27	5.801	
9,000.0	7,250.0	8,806.3	7,045.0	42.9	42.6	-59.15	175.3	1,397.3	407.6	333.3	74.27	5.488	
9,100.0	7,250.0	8,906.3	7,045.0	45.2	45.0	-59.15	175.3	1,497.3	407.6	329.3	78.31	5.205	
9,200.0	7,250.0	9,006.3	7,045.0	47.6	47.3	-59.15	175.3	1,597.3	407.6	325.2	82.36	4.949	
9,300.0	7,250.0	9,106.3	7,045.0	50.0	49.7	-59.15	175.3	1,697.3	407.6	321.2	86.43	4.716	
9,400.0	7,250.0	9,206.3	7,045.0	52.3	52.1	-59.15	175.3	1,797.3	407.6	317.1	90.52	4.503	
9,500.0	7,250.0	9,306.3	7,045.0	54.7	54.5	-59.15	175.2	1,897.3	407.6	312.9	94.62	4.307	
9,600.0	7,250.0	9,406.3	7,045.0	57.1	56.9	-59.15	175.2	1,997.3	407.6	308.8	98.74	4.128	
9,700.0	7,250.0	9,506.3	7,045.0	59.5	59.3	-59.15	175.2	2,097.3	407.6	304.7	102.87	3.962	
9,800.0	7,250.0	9,606.3	7,045.0	61.9	61.7	-59.15	175.2	2,197.3	407.5	300.5	107.00	3.809	
9,900.0	7,250.0	9,706.3	7,045.0	64.4	64.1	-59.15	175.2	2,297.3	407.5	296.4	111.15	3.667	
10,000.0	7,250.0	9,806.3	7,045.0	66.8	66.5	-59.15	175.2	2,397.3	407.5	292.2	115.30	3.534	
10,100.0	7,250.0	9,906.3	7,045.0	69.2	69.0	-59.15	175.2	2,497.3	407.5	288.1	119.46	3.411	

CC - Min centre to center distance or convergent point, SF - min separation factor, ES - min ellipse separation

# Anticollision Report

<b>Company:</b>	EnCana Oil & Gas (USA) Inc	<b>Local Co-ordinate Reference:</b>	Well Zisch 3D-6H-M368
<b>Project:</b>	DJ Wattenberg	<b>TVD Reference:</b>	WELL @ 5173.0ft (Original Well Elev)
<b>Reference Site:</b>	S6-T3N-R68W (Zisch)	<b>MD Reference:</b>	WELL @ 5173.0ft (Original Well Elev)
<b>Site Error:</b>	0.0ft	<b>North Reference:</b>	True
<b>Reference Well:</b>	Zisch 3D-6H-M368	<b>Survey Calculation Method:</b>	Minimum Curvature
<b>Well Error:</b>	0.0ft	<b>Output errors are at</b>	2.00 sigma
<b>Reference Wellbore</b>	HZ	<b>Database:</b>	USA EDM 5000 Multi Users DB
<b>Reference Design:</b>	Plan #1	<b>Offset TVD Reference:</b>	Offset Datum

Offset Design S6-T3N-R68W (Zisch) - Zisch 3C-6H-M368 - HZ - Plan #1													Offset Site Error:	0.0 ft
Survey Program: 0-MWD													Offset Well Error:	0.0 ft
Reference		Offset		Semi Major Axis			Distance						Warning	
Measured Depth (ft)	Vertical Depth (ft)	Measured Depth (ft)	Vertical Depth (ft)	Reference (ft)	Offset (ft)	Highside Toolface (°)	Offset Wellbore Centre +N/-S (ft)	+E/-W (ft)	Between Centres (ft)	Between Ellipses (ft)	Total Uncertainty Axis	Separation Factor		
10,200.0	7,250.0	10,006.3	7,045.0	71.6	71.4	-59.15	175.2	2,597.3	407.5	283.9	123.63	3.296		
10,300.0	7,250.0	10,106.3	7,045.0	74.1	73.8	-59.14	175.2	2,697.3	407.5	279.7	127.80	3.189		
10,400.0	7,250.0	10,206.3	7,045.0	76.5	76.3	-59.14	175.2	2,797.3	407.5	275.5	131.98	3.088		
10,500.0	7,250.0	10,306.3	7,045.0	78.9	78.7	-59.14	175.2	2,897.3	407.5	271.3	136.16	2.993		
10,600.0	7,250.0	10,406.3	7,045.0	81.4	81.1	-59.14	175.2	2,997.3	407.5	267.1	140.35	2.903		
10,700.0	7,250.0	10,506.3	7,045.0	83.8	83.6	-59.14	175.2	3,097.3	407.5	262.9	144.54	2.819		
10,800.0	7,250.0	10,606.3	7,045.0	86.2	86.0	-59.14	175.2	3,197.3	407.5	258.7	148.73	2.740		
10,900.0	7,250.0	10,706.3	7,045.0	88.7	88.5	-59.14	175.2	3,297.3	407.5	254.5	152.93	2.664		
11,000.0	7,250.0	10,806.3	7,045.0	91.1	90.9	-59.14	175.2	3,397.3	407.5	250.3	157.12	2.593		
11,100.0	7,250.0	10,906.3	7,045.0	93.6	93.4	-59.14	175.2	3,497.3	407.5	246.1	161.33	2.526		
11,200.0	7,250.0	11,006.3	7,045.0	96.0	95.8	-59.14	175.2	3,597.3	407.4	241.9	165.53	2.461		
11,300.0	7,250.0	11,106.3	7,045.0	98.5	98.3	-59.14	175.2	3,697.3	407.4	237.7	169.74	2.400		
11,400.0	7,250.0	11,206.3	7,045.0	100.9	100.7	-59.14	175.2	3,797.3	407.4	233.5	173.95	2.342		
11,500.0	7,250.0	11,306.3	7,045.0	103.4	103.2	-59.14	175.2	3,897.3	407.4	229.3	178.16	2.287		
11,600.0	7,250.0	11,406.3	7,045.0	105.8	105.6	-59.14	175.2	3,997.3	407.4	225.0	182.37	2.234		
11,667.8	7,250.0	11,474.0	7,045.0	107.5	107.3	-59.14	175.2	4,065.1	407.4	222.2	185.23	2.200		
11,694.8	7,250.0	11,498.2	7,045.0	108.2	107.9	-59.14	175.2	4,089.3	407.4	221.1	186.31	2.187 SF		

## Anticollision Report

<b>Company:</b>	EnCana Oil & Gas (USA) Inc	<b>Local Co-ordinate Reference:</b>	Well Zisch 3D-6H-M368
<b>Project:</b>	DJ Wattenberg	<b>TVD Reference:</b>	WELL @ 5173.0ft (Original Well Elev)
<b>Reference Site:</b>	S6-T3N-R68W (Zisch)	<b>MD Reference:</b>	WELL @ 5173.0ft (Original Well Elev)
<b>Site Error:</b>	0.0ft	<b>North Reference:</b>	True
<b>Reference Well:</b>	Zisch 3D-6H-M368	<b>Survey Calculation Method:</b>	Minimum Curvature
<b>Well Error:</b>	0.0ft	<b>Output errors are at</b>	2.00 sigma
<b>Reference Wellbore</b>	HZ	<b>Database:</b>	USA EDM 5000 Multi Users DB
<b>Reference Design:</b>	Plan #1	<b>Offset TVD Reference:</b>	Offset Datum

Reference Depths are relative to WELL @ 5173.0ft (Original Well Elev)

Offset Depths are relative to Offset Datum

Central Meridian is -105.500000 °

Coordinates are relative to: Zisch 3D-6H-M368

Coordinate System is US State Plane 1983, Colorado Northern Zone

Grid Convergence at Surface is: 0.29°

