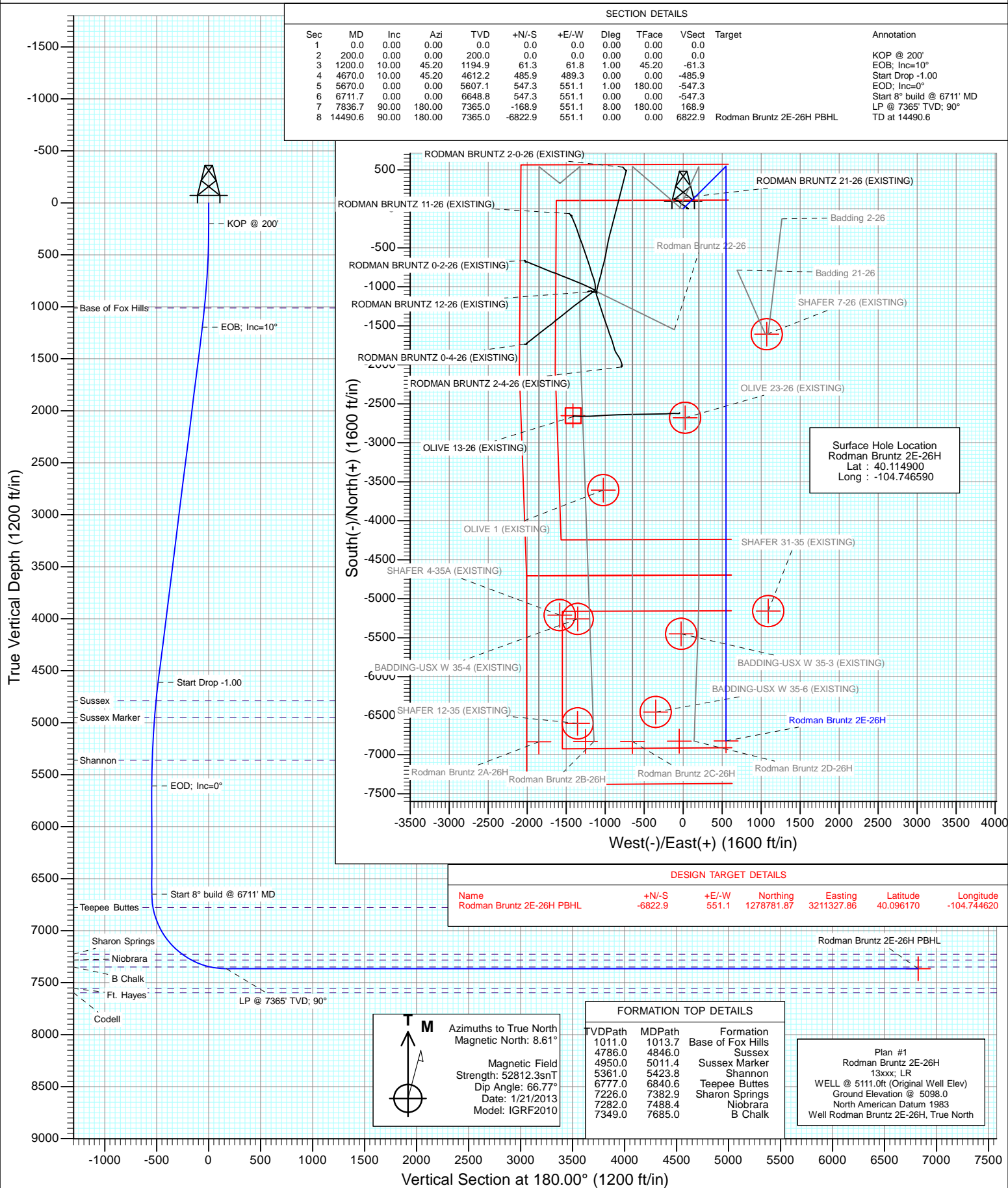




Project: DJ Wattenberg  
Site: S26-T2N-R66W (Rodman Bruntz)  
Well: Rodman Bruntz 2E-26H  
Wellbore: Hz  
Design: Plan #1



## Planning Report

<b>Database:</b>	USA EDM 5000 Multi Users DB	<b>Local Co-ordinate Reference:</b>	Well Rodman Bruntz 2E-26H
<b>Company:</b>	EnCana Oil & Gas (USA) Inc	<b>TVD Reference:</b>	WELL @ 5111.0ft (Original Well Elev)
<b>Project:</b>	DJ Wattenberg	<b>MD Reference:</b>	WELL @ 5111.0ft (Original Well Elev)
<b>Site:</b>	S26-T2N-R66W (Rodman Bruntz)	<b>North Reference:</b>	True
<b>Well:</b>	Rodman Bruntz 2E-26H	<b>Survey Calculation Method:</b>	Minimum Curvature
<b>Wellbore:</b>	Hz		
<b>Design:</b>	Plan #1		

<b>Project</b>	DJ Wattenberg		
<b>Map System:</b>	US State Plane 1983	<b>System Datum:</b>	Mean Sea Level
<b>Geo Datum:</b>	North American Datum 1983		
<b>Map Zone:</b>	Colorado Northern Zone		

Site		S26-T2N-R66W (Rodman Bruntz)			
Site Position:		Northing:	1,285,917.94 ft	Latitude:	40.115810
From:	Lat/Long	Easting:	3,209,130.25 ft	Longitude:	-104.752260
Position Uncertainty:	0.0 ft	Slot Radius:	13.200 in	Grid Convergence:	0.48 °

Well	Rodman Bruntz 2E-26H					
Well Position	+N/-S	0.0 ft	Northing:	1,285,599.85 ft	Latitude:	40.114900
	+E/-W	0.0 ft	Easting:	3,210,718.79 ft	Longitude:	-104.746590
Position Uncertainty		0.0 ft	Wellhead Elevation:	ft	Ground Level:	5,098.0 ft

<b>Wellbore</b>	Hz				
<b>Magnetics</b>	<b>Model Name</b>	<b>Sample Date</b>	<b>Declination (°)</b>	<b>Dip Angle (°)</b>	<b>Field Strength (nT)</b>
	IGRF2010	1/21/2013	8.61	66.77	52,812

<b>Design</b>	Plan #1				
<b>Audit Notes:</b>					
<b>Version:</b>	<b>Phase:</b>	PLAN		<b>Tie On Depth:</b>	0.0
<b>Vertical Section:</b>	<b>Depth From (TVD) (ft)</b>	<b>+N/-S (ft)</b>	<b>+E/-W (ft)</b>	<b>Direction (°)</b>	
	0.0	0.0	0.0	180.00	

<b>Plan Sections</b>										
Measured Depth (ft)	Inclination (°)	Azimuth (°)	Vertical Depth (ft)	+N/-S (ft)	+E/-W (ft)	Dogleg Rate (°/100ft)	Build Rate (°/100ft)	Turn Rate (°/100ft)	TFO (°)	Target
0.0	0.00	0.00	0.0	0.0	0.0	0.00	0.00	0.00	0.00	
200.0	0.00	0.00	200.0	0.0	0.0	0.00	0.00	0.00	0.00	
1,200.0	10.00	45.20	1,194.9	61.3	61.8	1.00	1.00	0.00	45.20	
4,670.0	10.00	45.20	4,612.2	485.9	489.3	0.00	0.00	0.00	0.00	
5,670.0	0.00	0.00	5,607.1	547.3	551.1	1.00	-1.00	0.00	180.00	
6,711.7	0.00	0.00	6,648.8	547.3	551.1	0.00	0.00	0.00	0.00	
7,836.7	90.00	180.00	7,365.0	-168.9	551.1	8.00	8.00	0.00	180.00	
14,490.6	90.00	180.00	7,365.0	-6,822.9	551.1	0.00	0.00	0.00	0.00	Rodman Bruntz 2E-26H

# Planning Report

<b>Database:</b>	USA EDM 5000 Multi Users DB	<b>Local Co-ordinate Reference:</b>	Well Rodman Bruntz 2E-26H
<b>Company:</b>	EnCana Oil & Gas (USA) Inc	<b>TVD Reference:</b>	WELL @ 5111.0ft (Original Well Elev)
<b>Project:</b>	DJ Wattenberg	<b>MD Reference:</b>	WELL @ 5111.0ft (Original Well Elev)
<b>Site:</b>	S26-T2N-R66W (Rodman Bruntz)	<b>North Reference:</b>	True
<b>Well:</b>	Rodman Bruntz 2E-26H	<b>Survey Calculation Method:</b>	Minimum Curvature
<b>Wellbore:</b>	Hz		
<b>Design:</b>	Plan #1		

Planned Survey									
Measured Depth (ft)	Inclination (°)	Azimuth (°)	Vertical Depth (ft)	+N/-S (ft)	+E/-W (ft)	Vertical Section (ft)	Dogleg Rate (°/100ft)	Build Rate (°/100ft)	Comments / Formations
0.0	0.00	0.00	0.0	0.0	0.0	0.0	0.00	0.00	
100.0	0.00	0.00	100.0	0.0	0.0	0.0	0.00	0.00	
200.0	0.00	0.00	200.0	0.0	0.0	0.0	0.00	0.00	KOP @ 200'
300.0	1.00	45.20	300.0	0.6	0.6	-0.6	1.00	1.00	
400.0	2.00	45.20	400.0	2.5	2.5	-2.5	1.00	1.00	
500.0	3.00	45.20	499.9	5.5	5.6	-5.5	1.00	1.00	
600.0	4.00	45.20	599.7	9.8	9.9	-9.8	1.00	1.00	
700.0	5.00	45.20	699.4	15.4	15.5	-15.4	1.00	1.00	
800.0	6.00	45.20	798.9	22.1	22.3	-22.1	1.00	1.00	
900.0	7.00	45.20	898.3	30.1	30.3	-30.1	1.00	1.00	
1,000.0	8.00	45.20	997.4	39.3	39.6	-39.3	1.00	1.00	
1,013.7	8.14	45.20	1,011.0	40.6	40.9	-40.6	1.00	1.00	Base of Fox Hills
1,100.0	9.00	45.20	1,096.3	49.7	50.1	-49.7	1.00	1.00	
1,200.0	10.00	45.20	1,194.9	61.3	61.8	-61.3	1.00	1.00	EOB; Inc=10°
1,300.0	10.00	45.20	1,293.4	73.6	74.1	-73.6	0.00	0.00	
1,400.0	10.00	45.20	1,391.9	85.8	86.4	-85.8	0.00	0.00	
1,500.0	10.00	45.20	1,490.4	98.0	98.7	-98.0	0.00	0.00	
1,600.0	10.00	45.20	1,588.9	110.3	111.1	-110.3	0.00	0.00	
1,700.0	10.00	45.20	1,687.3	122.5	123.4	-122.5	0.00	0.00	
1,800.0	10.00	45.20	1,785.8	134.8	135.7	-134.8	0.00	0.00	
1,900.0	10.00	45.20	1,884.3	147.0	148.0	-147.0	0.00	0.00	
2,000.0	10.00	45.20	1,982.8	159.2	160.3	-159.2	0.00	0.00	
2,100.0	10.00	45.20	2,081.3	171.5	172.7	-171.5	0.00	0.00	
2,200.0	10.00	45.20	2,179.7	183.7	185.0	-183.7	0.00	0.00	
2,300.0	10.00	45.20	2,278.2	195.9	197.3	-195.9	0.00	0.00	
2,400.0	10.00	45.20	2,376.7	208.2	209.6	-208.2	0.00	0.00	
2,500.0	10.00	45.20	2,475.2	220.4	221.9	-220.4	0.00	0.00	
2,600.0	10.00	45.20	2,573.7	232.6	234.3	-232.6	0.00	0.00	
2,700.0	10.00	45.20	2,672.1	244.9	246.6	-244.9	0.00	0.00	
2,800.0	10.00	45.20	2,770.6	257.1	258.9	-257.1	0.00	0.00	
2,900.0	10.00	45.20	2,869.1	269.3	271.2	-269.3	0.00	0.00	
3,000.0	10.00	45.20	2,967.6	281.6	283.6	-281.6	0.00	0.00	
3,100.0	10.00	45.20	3,066.1	293.8	295.9	-293.8	0.00	0.00	
3,200.0	10.00	45.20	3,164.5	306.1	308.2	-306.1	0.00	0.00	
3,300.0	10.00	45.20	3,263.0	318.3	320.5	-318.3	0.00	0.00	
3,400.0	10.00	45.20	3,361.5	330.5	332.8	-330.5	0.00	0.00	
3,500.0	10.00	45.20	3,460.0	342.8	345.2	-342.8	0.00	0.00	
3,600.0	10.00	45.20	3,558.5	355.0	357.5	-355.0	0.00	0.00	
3,700.0	10.00	45.20	3,657.0	367.2	369.8	-367.2	0.00	0.00	
3,800.0	10.00	45.20	3,755.4	379.5	382.1	-379.5	0.00	0.00	
3,900.0	10.00	45.20	3,853.9	391.7	394.4	-391.7	0.00	0.00	
4,000.0	10.00	45.20	3,952.4	403.9	406.8	-403.9	0.00	0.00	
4,100.0	10.00	45.20	4,050.9	416.2	419.1	-416.2	0.00	0.00	
4,200.0	10.00	45.20	4,149.4	428.4	431.4	-428.4	0.00	0.00	
4,300.0	10.00	45.20	4,247.8	440.6	443.7	-440.6	0.00	0.00	
4,400.0	10.00	45.20	4,346.3	452.9	456.1	-452.9	0.00	0.00	
4,500.0	10.00	45.20	4,444.8	465.1	468.4	-465.1	0.00	0.00	
4,600.0	10.00	45.20	4,543.3	477.4	480.7	-477.4	0.00	0.00	
4,670.0	10.00	45.20	4,612.2	485.9	489.3	-485.9	0.00	0.00	Start Drop -1.00
4,700.0	9.70	45.20	4,641.8	489.5	493.0	-489.5	1.00	-1.00	
4,800.0	8.70	45.20	4,740.5	500.8	504.3	-500.8	1.00	-1.00	
4,846.0	8.24	45.20	4,786.0	505.6	509.1	-505.6	1.00	-1.00	Sussex

# Planning Report

<b>Database:</b>	USA EDM 5000 Multi Users DB	<b>Local Co-ordinate Reference:</b>	Well Rodman Bruntz 2E-26H
<b>Company:</b>	EnCana Oil & Gas (USA) Inc	<b>TVD Reference:</b>	WELL @ 5111.0ft (Original Well Elev)
<b>Project:</b>	DJ Wattenberg	<b>MD Reference:</b>	WELL @ 5111.0ft (Original Well Elev)
<b>Site:</b>	S26-T2N-R66W (Rodman Bruntz)	<b>North Reference:</b>	True
<b>Well:</b>	Rodman Bruntz 2E-26H	<b>Survey Calculation Method:</b>	Minimum Curvature
<b>Wellbore:</b>	Hz		
<b>Design:</b>	Plan #1		

Planned Survey									
Measured Depth (ft)	Inclination (°)	Azimuth (°)	Vertical Depth (ft)	+N/-S (ft)	+E/-W (ft)	Vertical Section (ft)	Dogleg Rate (°/100ft)	Build Rate (°/100ft)	Comments / Formations
4,900.0	7.70	45.20	4,839.5	510.9	514.4	-510.9	1.00	-1.00	
5,000.0	6.70	45.20	4,938.7	519.7	523.3	-519.7	1.00	-1.00	
5,011.4	6.59	45.20	4,950.0	520.6	524.3	-520.6	1.00	-1.00	Sussex Marker
5,100.0	5.70	45.20	5,038.1	527.3	531.0	-527.3	1.00	-1.00	
5,200.0	4.70	45.20	5,137.7	533.7	537.4	-533.7	1.00	-1.00	
5,300.0	3.70	45.20	5,237.4	538.8	542.6	-538.8	1.00	-1.00	
5,400.0	2.70	45.20	5,337.2	542.8	546.6	-542.8	1.00	-1.00	
5,423.8	2.46	45.20	5,361.0	543.5	547.3	-543.5	1.00	-1.00	Shannon
5,500.0	1.70	45.20	5,437.2	545.5	549.3	-545.5	1.00	-1.00	
5,600.0	0.70	45.20	5,537.1	547.0	550.8	-547.0	1.00	-1.00	
5,670.0	0.00	0.00	5,607.1	547.3	551.1	-547.3	1.00	-1.00	EOD; Inc=0°
5,700.0	0.00	0.00	5,637.1	547.3	551.1	-547.3	0.00	0.00	
5,800.0	0.00	0.00	5,737.1	547.3	551.1	-547.3	0.00	0.00	
5,900.0	0.00	0.00	5,837.1	547.3	551.1	-547.3	0.00	0.00	
6,000.0	0.00	0.00	5,937.1	547.3	551.1	-547.3	0.00	0.00	
6,100.0	0.00	0.00	6,037.1	547.3	551.1	-547.3	0.00	0.00	
6,200.0	0.00	0.00	6,137.1	547.3	551.1	-547.3	0.00	0.00	
6,300.0	0.00	0.00	6,237.1	547.3	551.1	-547.3	0.00	0.00	
6,400.0	0.00	0.00	6,337.1	547.3	551.1	-547.3	0.00	0.00	
6,500.0	0.00	0.00	6,437.1	547.3	551.1	-547.3	0.00	0.00	
6,600.0	0.00	0.00	6,537.1	547.3	551.1	-547.3	0.00	0.00	
6,700.0	0.00	0.00	6,637.1	547.3	551.1	-547.3	0.00	0.00	
6,711.7	0.00	0.00	6,648.8	547.3	551.1	-547.3	0.00	0.00	Start 8° build @ 6711' MD
6,800.0	7.07	180.00	6,736.9	541.8	551.1	-541.8	8.00	8.00	
6,840.6	10.31	180.00	6,777.0	535.7	551.1	-535.7	8.00	8.00	Teepee Buttes
6,900.0	15.07	180.00	6,835.0	522.6	551.1	-522.6	8.00	8.00	
7,000.0	23.07	180.00	6,929.4	490.0	551.1	-490.0	8.00	8.00	
7,100.0	31.07	180.00	7,018.4	444.5	551.1	-444.5	8.00	8.00	
7,200.0	39.07	180.00	7,100.2	387.1	551.1	-387.1	8.00	8.00	
7,300.0	47.07	180.00	7,173.2	318.9	551.1	-318.9	8.00	8.00	
7,382.9	53.70	180.00	7,226.0	255.1	551.1	-255.1	8.00	8.00	Sharon Springs
7,400.0	55.07	180.00	7,236.0	241.2	551.1	-241.2	8.00	8.00	
7,488.4	62.14	180.00	7,282.0	165.7	551.1	-165.7	8.00	8.00	Niobrara
7,500.0	63.07	180.00	7,287.3	155.5	551.1	-155.5	8.00	8.00	
7,600.0	71.07	180.00	7,326.3	63.4	551.1	-63.4	8.00	8.00	
7,685.0	77.87	180.00	7,349.0	-18.4	551.1	18.4	8.00	8.00	B Chalk
7,700.0	79.07	180.00	7,352.0	-33.1	551.1	33.1	8.00	8.00	
7,800.0	87.07	180.00	7,364.1	-132.3	551.1	132.3	8.00	8.00	
7,836.7	90.00	180.00	7,365.0	-168.9	551.1	168.9	8.00	8.00	LP @ 7365' TVD; 90°
7,900.0	90.00	180.00	7,365.0	-232.3	551.1	232.3	0.00	0.00	
8,000.0	90.00	180.00	7,365.0	-332.3	551.1	332.3	0.00	0.00	
8,100.0	90.00	180.00	7,365.0	-432.3	551.1	432.3	0.00	0.00	
8,200.0	90.00	180.00	7,365.0	-532.3	551.1	532.3	0.00	0.00	
8,300.0	90.00	180.00	7,365.0	-632.3	551.1	632.3	0.00	0.00	
8,400.0	90.00	180.00	7,365.0	-732.3	551.1	732.3	0.00	0.00	
8,500.0	90.00	180.00	7,365.0	-832.3	551.1	832.3	0.00	0.00	
8,600.0	90.00	180.00	7,365.0	-932.3	551.1	932.3	0.00	0.00	
8,700.0	90.00	180.00	7,365.0	-1,032.3	551.1	1,032.3	0.00	0.00	
8,800.0	90.00	180.00	7,365.0	-1,132.3	551.1	1,132.3	0.00	0.00	
8,900.0	90.00	180.00	7,365.0	-1,232.3	551.1	1,232.3	0.00	0.00	
9,000.0	90.00	180.00	7,365.0	-1,332.3	551.1	1,332.3	0.00	0.00	
9,100.0	90.00	180.00	7,365.0	-1,432.3	551.1	1,432.3	0.00	0.00	

## Planning Report

<b>Database:</b>	USA EDM 5000 Multi Users DB	<b>Local Co-ordinate Reference:</b>	Well Rodman Bruntz 2E-26H
<b>Company:</b>	EnCana Oil & Gas (USA) Inc	<b>TVD Reference:</b>	WELL @ 5111.0ft (Original Well Elev)
<b>Project:</b>	DJ Wattenberg	<b>MD Reference:</b>	WELL @ 5111.0ft (Original Well Elev)
<b>Site:</b>	S26-T2N-R66W (Rodman Bruntz)	<b>North Reference:</b>	True
<b>Well:</b>	Rodman Bruntz 2E-26H	<b>Survey Calculation Method:</b>	Minimum Curvature
<b>Wellbore:</b>	Hz		
<b>Design:</b>	Plan #1		

### Planned Survey

Measured Depth (ft)	Inclination (°)	Azimuth (°)	Vertical Depth (ft)	+N/-S (ft)	+E/-W (ft)	Vertical Section (ft)	Dogleg Rate (°/100ft)	Build Rate (°/100ft)	Comments / Formations
9,200.0	90.00	180.00	7,365.0	-1,532.3	551.1	1,532.3	0.00	0.00	
9,300.0	90.00	180.00	7,365.0	-1,632.3	551.1	1,632.3	0.00	0.00	
9,400.0	90.00	180.00	7,365.0	-1,732.3	551.1	1,732.3	0.00	0.00	
9,500.0	90.00	180.00	7,365.0	-1,832.3	551.1	1,832.3	0.00	0.00	
9,600.0	90.00	180.00	7,365.0	-1,932.3	551.1	1,932.3	0.00	0.00	
9,700.0	90.00	180.00	7,365.0	-2,032.3	551.1	2,032.3	0.00	0.00	
9,800.0	90.00	180.00	7,365.0	-2,132.3	551.1	2,132.3	0.00	0.00	
9,900.0	90.00	180.00	7,365.0	-2,232.3	551.1	2,232.3	0.00	0.00	
10,000.0	90.00	180.00	7,365.0	-2,332.3	551.1	2,332.3	0.00	0.00	
10,100.0	90.00	180.00	7,365.0	-2,432.3	551.1	2,432.3	0.00	0.00	
10,200.0	90.00	180.00	7,365.0	-2,532.3	551.1	2,532.3	0.00	0.00	
10,300.0	90.00	180.00	7,365.0	-2,632.3	551.1	2,632.3	0.00	0.00	
10,400.0	90.00	180.00	7,365.0	-2,732.3	551.1	2,732.3	0.00	0.00	
10,500.0	90.00	180.00	7,365.0	-2,832.3	551.1	2,832.3	0.00	0.00	
10,600.0	90.00	180.00	7,365.0	-2,932.3	551.1	2,932.3	0.00	0.00	
10,700.0	90.00	180.00	7,365.0	-3,032.3	551.1	3,032.3	0.00	0.00	
10,800.0	90.00	180.00	7,365.0	-3,132.3	551.1	3,132.3	0.00	0.00	
10,900.0	90.00	180.00	7,365.0	-3,232.3	551.1	3,232.3	0.00	0.00	
11,000.0	90.00	180.00	7,365.0	-3,332.3	551.1	3,332.3	0.00	0.00	
11,100.0	90.00	180.00	7,365.0	-3,432.3	551.1	3,432.3	0.00	0.00	
11,200.0	90.00	180.00	7,365.0	-3,532.3	551.1	3,532.3	0.00	0.00	
11,300.0	90.00	180.00	7,365.0	-3,632.3	551.1	3,632.3	0.00	0.00	
11,400.0	90.00	180.00	7,365.0	-3,732.3	551.1	3,732.3	0.00	0.00	
11,500.0	90.00	180.00	7,365.0	-3,832.3	551.1	3,832.3	0.00	0.00	
11,600.0	90.00	180.00	7,365.0	-3,932.3	551.1	3,932.3	0.00	0.00	
11,700.0	90.00	180.00	7,365.0	-4,032.3	551.1	4,032.3	0.00	0.00	
11,800.0	90.00	180.00	7,365.0	-4,132.3	551.1	4,132.3	0.00	0.00	
11,900.0	90.00	180.00	7,365.0	-4,232.3	551.1	4,232.3	0.00	0.00	
12,000.0	90.00	180.00	7,365.0	-4,332.3	551.1	4,332.3	0.00	0.00	
12,100.0	90.00	180.00	7,365.0	-4,432.3	551.1	4,432.3	0.00	0.00	
12,200.0	90.00	180.00	7,365.0	-4,532.3	551.1	4,532.3	0.00	0.00	
12,300.0	90.00	180.00	7,365.0	-4,632.3	551.1	4,632.3	0.00	0.00	
12,400.0	90.00	180.00	7,365.0	-4,732.3	551.1	4,732.3	0.00	0.00	
12,500.0	90.00	180.00	7,365.0	-4,832.3	551.1	4,832.3	0.00	0.00	
12,600.0	90.00	180.00	7,365.0	-4,932.3	551.1	4,932.3	0.00	0.00	
12,700.0	90.00	180.00	7,365.0	-5,032.3	551.1	5,032.3	0.00	0.00	
12,800.0	90.00	180.00	7,365.0	-5,132.3	551.1	5,132.3	0.00	0.00	
12,900.0	90.00	180.00	7,365.0	-5,232.3	551.1	5,232.3	0.00	0.00	
13,000.0	90.00	180.00	7,365.0	-5,332.3	551.1	5,332.3	0.00	0.00	
13,100.0	90.00	180.00	7,365.0	-5,432.3	551.1	5,432.3	0.00	0.00	
13,200.0	90.00	180.00	7,365.0	-5,532.3	551.1	5,532.3	0.00	0.00	
13,300.0	90.00	180.00	7,365.0	-5,632.3	551.1	5,632.3	0.00	0.00	
13,400.0	90.00	180.00	7,365.0	-5,732.3	551.1	5,732.3	0.00	0.00	
13,500.0	90.00	180.00	7,365.0	-5,832.3	551.1	5,832.3	0.00	0.00	
13,600.0	90.00	180.00	7,365.0	-5,932.3	551.1	5,932.3	0.00	0.00	
13,700.0	90.00	180.00	7,365.0	-6,032.3	551.1	6,032.3	0.00	0.00	
13,800.0	90.00	180.00	7,365.0	-6,132.3	551.1	6,132.3	0.00	0.00	
13,900.0	90.00	180.00	7,365.0	-6,232.3	551.1	6,232.3	0.00	0.00	
14,000.0	90.00	180.00	7,365.0	-6,332.3	551.1	6,332.3	0.00	0.00	
14,100.0	90.00	180.00	7,365.0	-6,432.3	551.1	6,432.3	0.00	0.00	
14,200.0	90.00	180.00	7,365.0	-6,532.3	551.1	6,532.3	0.00	0.00	
14,300.0	90.00	180.00	7,365.0	-6,632.3	551.1	6,632.3	0.00	0.00	

## Planning Report

<b>Database:</b>	USA EDM 5000 Multi Users DB	<b>Local Co-ordinate Reference:</b>	Well Rodman Bruntz 2E-26H
<b>Company:</b>	EnCana Oil & Gas (USA) Inc	<b>TVD Reference:</b>	WELL @ 5111.0ft (Original Well Elev)
<b>Project:</b>	DJ Wattenberg	<b>MD Reference:</b>	WELL @ 5111.0ft (Original Well Elev)
<b>Site:</b>	S26-T2N-R66W (Rodman Bruntz)	<b>North Reference:</b>	True
<b>Well:</b>	Rodman Bruntz 2E-26H	<b>Survey Calculation Method:</b>	Minimum Curvature
<b>Wellbore:</b>	Hz		
<b>Design:</b>	Plan #1		

Planned Survey									
Measured Depth (ft)	Inclination (°)	Azimuth (°)	Vertical Depth (ft)	+N/-S (ft)	+E/-W (ft)	Vertical Section (ft)	Dogleg Rate (°/100ft)	Build Rate (°/100ft)	Comments / Formations
14,400.0	90.00	180.00	7,365.0	-6,732.3	551.1	6,732.3	0.00	0.00	
14,490.6	90.00	180.00	7,365.0	-6,822.9	551.1	6,822.9	0.00	0.00	TD at 14490.6 - Rodman Bruntz 2E-26H PBHL

Targets									
Target Name	Dip Angle (°)	Dip Dir. (°)	TVD (ft)	+N/-S (ft)	+E/-W (ft)	Northing (ft)	Easting (ft)	Latitude	Longitude
- hit/miss target									
- Shape									
Rodman Bruntz 2E-26H	0.00	0.00	7,365.0	-6,822.9	551.1	1,278,781.87	3,211,327.86	40.096170	-104.744620
- plan hits target center									
- Point									

Formations						
Measured Depth (ft)	Vertical Depth (ft)	Name	Lithology	Dip (°)	Dip Direction (°)	
1,013.7	1,011.0	Base of Fox Hills				
4,846.0	4,786.0	Sussex				
5,011.4	4,950.0	Sussex Marker				
5,423.8	5,361.0	Shannon				
6,840.6	6,777.0	Teepee Buttes				
7,382.9	7,226.0	Sharon Springs				
7,488.4	7,282.0	Niobrara				
7,685.0	7,349.0	B Chalk				

Plan Annotations				
Measured Depth (ft)	Vertical Depth (ft)	Local Coordinates		Comment
		+N/-S (ft)	+E/-W (ft)	
200.0	200.0	0.0	0.0	KOP @ 200'
1,200.0	1,194.9	61.3	61.8	EOB; Inc=10°
4,670.0	4,612.2	485.9	489.3	Start Drop -1.00
5,670.0	5,607.1	547.3	551.1	EOD; Inc=0°
6,711.7	6,648.8	547.3	551.1	Start 8° build @ 6711' MD
7,836.7	7,365.0	-168.9	551.1	LP @ 7365' TVD; 90°
14,490.6	7,365.0	-6,822.9	551.1	TD at 14490.6

# **EnCana Oil & Gas (USA) Inc**

**DJ Wattenberg**

**S26-T2N-R66W (Rodman Bruntz)**

**Rodman Bruntz 2E-26H**

**Hz**

**Plan #1**

## **Anticollision Report**

**22 January, 2013**

## Anticollision Report

<b>Company:</b>	EnCana Oil & Gas (USA) Inc	<b>Local Co-ordinate Reference:</b>	Well Rodman Bruntz 2E-26H
<b>Project:</b>	DJ Wattenberg	<b>TVD Reference:</b>	WELL @ 5111.0ft (Original Well Elev)
<b>Reference Site:</b>	S26-T2N-R66W (Rodman Bruntz)	<b>MD Reference:</b>	WELL @ 5111.0ft (Original Well Elev)
<b>Site Error:</b>	0.0ft	<b>North Reference:</b>	True
<b>Reference Well:</b>	Rodman Bruntz 2E-26H	<b>Survey Calculation Method:</b>	Minimum Curvature
<b>Well Error:</b>	0.0ft	<b>Output errors are at</b>	2.00 sigma
<b>Reference Wellbore</b>	Hz	<b>Database:</b>	USA EDM 5000 Multi Users DB
<b>Reference Design:</b>	Plan #1	<b>Offset TVD Reference:</b>	Offset Datum

Reference	Plan #1		
Filter type:	NO GLOBAL FILTER: Using user defined selection & filtering criteria		
Interpolation Method:	MD Interval 100.0ft	Error Model:	Systematic Ellipse
Depth Range:	Unlimited	Scan Method:	Closest Approach 3D
Results Limited by:	Maximum center-center distance of 500.0ft	Error Surface:	Elliptical Conic
Warning Levels Evaluated at:	2.00 Sigma		

Survey Tool Program		Date	1/22/2013		
From (ft)	To (ft)	Survey (Wellbore)	Tool Name	Description	
0.0	14,489.9	Plan #1 (Hz)	MWD	Geolink MWD	

Summary						
Site Name	Reference Measured Depth (ft)	Offset Measured Depth (ft)	Distance Between Centres (ft)	Distance Between Ellipses (ft)	Separation Factor	Warning
<b>Offset Well - Wellbore - Design</b>						
S26-T2N-R66W (Rodman Bruntz)						
Badding 21-26 - DD - Plan #1	8,453.9	7,448.3	141.7	102.0	3.564	CC, ES, SF
Badding 2-26 - DD - Plan #1						Out of range
BADDING-USX W 35-3 (EXISTING) - Existing - Existing						Out of range
BADDING-USX W 35-4 (EXISTING) - Existing - Existing						Out of range
BADDING-USX W 35-6 (EXISTING) - Existing - Existing						Out of range
OLIVE 1 (EXISTING) - Existing - Existing						Out of range
OLIVE 13-26 (EXISTING) - Existing - Existing						Out of range
OLIVE 23-26 (EXISTING) - Existing - Existing						Out of range
RODMAN BRUNTZ 0-2-26 (EXISTING) - Existing - Exist						Out of range
RODMAN BRUNTZ 0-4-26 (EXISTING) - DD - DD						Out of range
RODMAN BRUNTZ 11-26 (EXISTING) - Existing - Existin						Out of range
RODMAN BRUNTZ 12-26 (EXISTING) - Existing - Existin						Out of range
RODMAN BRUNTZ 2-0-26 (EXISTING) - Existing - Exist						Out of range
RODMAN BRUNTZ 21-26 (EXISTING) - Existing - Existin	871.4	855.9	26.2	23.7	10.705	CC, ES
RODMAN BRUNTZ 21-26 (EXISTING) - Existing - Existin	900.0	884.3	26.3	23.8	10.381	SF
Rodman Bruntz 22-26 - DD - Plan #1						Out of range
RODMAN BRUNTZ 2-4-26 (EXISTING) - Existing - Exist						Out of range
Rodman Bruntz 2A-26H - DD - Plan #1						Out of range
Rodman Bruntz 2B-26H - Hz - Plan #1						Out of range
Rodman Bruntz 2C-26H - Hz - Plan #1	200.0	199.0	19.6	18.9	30.073	CC, ES
Rodman Bruntz 2C-26H - Hz - Plan #1	500.0	498.9	25.7	24.0	15.121	SF
Rodman Bruntz 2D-26H - Hz - Plan #1	200.0	200.0	50.3	49.7	77.124	CC
Rodman Bruntz 2D-26H - Hz - Plan #1	300.0	300.4	50.6	49.6	50.407	ES
Rodman Bruntz 2D-26H - Hz - Plan #1	14,490.6	14,645.8	452.5	230.7	2.040	SF
SHAHER 12-35 (EXISTING) - Existing - Existing						Out of range
SHAHER 31-35 (EXISTING) - Existing - Existing						Out of range
SHAHER 4-35A (EXISTING) - Existing - Existing						Out of range
SHAHER 7-26 (EXISTING) - Existing - Existing						Out of range



# Anticollision Report

<b>Company:</b>	EnCana Oil & Gas (USA) Inc	<b>Local Co-ordinate Reference:</b>	Well Rodman Bruntz 2E-26H
<b>Project:</b>	DJ Wattenberg	<b>TVD Reference:</b>	WELL @ 5111.0ft (Original Well Elev)
<b>Reference Site:</b>	S26-T2N-R66W (Rodman Bruntz)	<b>MD Reference:</b>	WELL @ 5111.0ft (Original Well Elev)
<b>Site Error:</b>	0.0ft	<b>North Reference:</b>	True
<b>Reference Well:</b>	Rodman Bruntz 2E-26H	<b>Survey Calculation Method:</b>	Minimum Curvature
<b>Well Error:</b>	0.0ft	<b>Output errors are at</b>	2.00 sigma
<b>Reference Wellbore</b>	Hz	<b>Database:</b>	USA EDM 5000 Multi Users DB
<b>Reference Design:</b>	Plan #1	<b>Offset TVD Reference:</b>	Offset Datum

Offset Design S26-T2N-R66W (Rodman Bruntz) - Badding 21-26 - DD - Plan #1												Offset Site Error:	0.0 ft
Survey Program: 0-MWD												Offset Well Error:	0.0 ft
Reference		Offset		Semi Major Axis			Distance						Warning
Measured Depth (ft)	Vertical Depth (ft)	Measured Depth (ft)	Vertical Depth (ft)	Reference (ft)	Offset (ft)	Highside Toolface (°)	Offset Wellbore Centre +N/-S (ft)	+E/-W (ft)	Between Centres (ft)	Between Ellipses (ft)	Total Uncertainty Axis	Separation Factor	
8,000.0	7,365.0	7,448.3	7,347.0	18.1	20.3	-90.00	-786.2	692.8	475.5	440.9	34.61	13.739	
8,100.0	7,365.0	7,448.3	7,347.0	18.9	20.3	-90.00	-786.2	692.8	381.2	345.7	35.55	10.723	
8,200.0	7,365.0	7,448.3	7,347.0	19.8	20.3	-90.00	-786.2	692.8	290.8	254.1	36.62	7.941	
8,300.0	7,365.0	7,448.3	7,347.0	20.8	20.3	-90.00	-786.2	692.8	209.2	171.4	37.79	5.536	
8,400.0	7,365.0	7,448.3	7,347.0	21.9	20.3	-90.00	-786.2	692.8	151.6	112.6	39.05	3.883	
8,453.9	7,365.0	7,448.3	7,347.0	22.6	20.3	-90.00	-786.2	692.8	141.7	102.0	39.77	3.564	CC, ES, SF
8,500.0	7,365.0	7,448.3	7,347.0	23.1	20.3	-90.00	-786.2	692.8	149.0	108.7	40.38	3.691	
8,600.0	7,365.0	7,448.3	7,347.0	24.4	20.3	-90.00	-786.2	692.8	203.6	161.8	41.77	4.873	
8,700.0	7,365.0	7,448.3	7,347.0	25.7	20.3	-90.00	-786.2	692.8	284.0	240.8	43.21	6.573	
8,800.0	7,365.0	7,448.3	7,347.0	27.1	20.3	-90.00	-786.2	692.8	374.0	329.3	44.68	8.370	
8,900.0	7,365.0	7,448.3	7,347.0	28.5	20.3	-90.00	-786.2	692.8	468.1	421.9	46.19	10.133	

# Anticollision Report

<b>Company:</b>	EnCana Oil & Gas (USA) Inc	<b>Local Co-ordinate Reference:</b>	Well Rodman Bruntz 2E-26H
<b>Project:</b>	DJ Wattenberg	<b>TVD Reference:</b>	WELL @ 5111.0ft (Original Well Elev)
<b>Reference Site:</b>	S26-T2N-R66W (Rodman Bruntz)	<b>MD Reference:</b>	WELL @ 5111.0ft (Original Well Elev)
<b>Site Error:</b>	0.0ft	<b>North Reference:</b>	True
<b>Reference Well:</b>	Rodman Bruntz 2E-26H	<b>Survey Calculation Method:</b>	Minimum Curvature
<b>Well Error:</b>	0.0ft	<b>Output errors are at</b>	2.00 sigma
<b>Reference Wellbore</b>	Hz	<b>Database:</b>	USA EDM 5000 Multi Users DB
<b>Reference Design:</b>	Plan #1	<b>Offset TVD Reference:</b>	Offset Datum

Offset Design S26-T2N-R66W (Rodman Bruntz) - RODMAN BRUNTZ 21-26 (EXISTING) - Existing - Existing														Offset Site Error:	0.0 ft
Survey Program: 100-Gyro														Offset Well Error:	0.0 ft
Reference		Offset		Semi Major Axis		Distance		Total		Separation		Warning			
Measured Depth (ft)	Vertical Depth (ft)	Measured Depth (ft)	Vertical Depth (ft)	Reference (ft)	Offset (ft)	Highside Toolface (°)	Offset Wellbore Centre +N/-S (ft)	+E/-W (ft)	Between Centres (ft)	Between Ellipses (ft)	Uncertainty Axis	Factor			
0.0	0.0	0.0	0.0	0.0	0.0	88.74	1.1	50.6	52.5						
100.0	100.0	86.4	86.4	0.2	0.1	88.25	1.5	50.2	50.3	50.0	0.23	220.261			
200.0	200.0	186.5	186.5	0.3	0.2	86.86	2.7	49.2	49.3	48.8	0.49	100.367			
300.0	300.0	286.6	286.6	0.5	0.3	41.30	3.5	48.1	47.5	46.8	0.75	63.182			
400.0	400.0	386.3	386.3	0.7	0.3	42.89	4.0	47.0	44.6	43.6	1.02	43.850			
500.0	499.9	486.2	486.1	0.9	0.4	45.43	5.1	46.4	40.8	39.6	1.29	31.760			
600.0	599.7	585.9	585.9	1.1	0.5	49.91	6.7	45.9	36.1	34.5	1.56	23.080			
700.0	699.4	685.5	685.4	1.3	0.6	58.44	8.1	45.7	31.1	29.3	1.86	16.719			
800.0	798.9	784.9	784.9	1.5	0.7	73.73	9.0	46.1	27.2	25.0	2.19	12.406			
871.4	869.9	855.9	855.9	1.7	0.8	89.23	9.4	46.6	26.2	23.7	2.44	10.705 CC, ES			
900.0	898.3	884.3	884.2	1.8	0.8	96.00	9.5	46.8	26.3	23.8	2.54	10.381 SF			
1,000.0	997.4	983.3	983.2	2.0	0.9	118.40	9.9	48.1	30.6	27.8	2.83	10.807			
1,100.0	1,096.3	1,082.1	1,082.0	2.3	0.9	134.39	9.5	50.1	40.2	37.2	3.08	13.066			
1,200.0	1,194.9	1,180.9	1,180.8	2.7	1.0	144.54	8.7	52.3	53.5	50.1	3.32	16.107			
1,300.0	1,293.4	1,279.6	1,279.4	3.0	1.1	150.77	8.0	54.9	68.3	64.8	3.56	19.172			
1,400.0	1,391.9	1,378.1	1,377.9	3.3	1.2	154.83	7.2	57.2	83.8	80.0	3.81	21.981			
1,500.0	1,490.4	1,476.3	1,476.0	3.7	1.3	157.78	6.3	59.2	99.9	95.9	4.07	24.573			
1,600.0	1,588.9	1,574.8	1,574.6	4.0	1.4	160.23	5.3	60.5	116.5	112.2	4.32	26.985			
1,700.0	1,687.3	1,673.4	1,673.1	4.4	1.5	162.21	4.6	61.5	133.2	128.6	4.57	29.137			
1,800.0	1,785.8	1,771.7	1,771.4	4.7	1.5	163.78	3.9	62.5	150.0	145.1	4.82	31.089			
1,900.0	1,884.3	1,870.6	1,870.3	5.0	1.6	164.99	3.1	63.5	166.9	161.8	5.08	32.847			
2,000.0	1,982.8	1,969.0	1,968.8	5.4	1.7	165.94	2.4	64.8	183.6	178.3	5.34	34.394			
2,100.0	2,081.3	2,067.8	2,067.6	5.7	1.8	166.93	2.0	65.5	200.5	194.9	5.60	35.841			
2,200.0	2,179.7	2,165.2	2,164.9	6.1	1.9	167.72	1.6	66.2	217.5	211.6	5.85	37.163			
2,300.0	2,278.2	2,264.3	2,264.0	6.4	2.0	168.47	0.8	66.5	234.9	228.8	6.11	38.456			
2,400.0	2,376.7	2,363.2	2,362.9	6.8	2.1	169.17	0.7	66.9	251.8	245.4	6.36	39.565			
2,500.0	2,475.2	2,462.0	2,461.7	7.1	2.2	169.95	1.0	66.6	268.8	262.2	6.62	40.624			
2,600.0	2,573.7	2,559.3	2,559.0	7.5	2.2	170.70	1.5	66.1	285.8	279.0	6.87	41.617			
2,700.0	2,672.1	2,656.1	2,655.8	7.8	2.3	171.41	1.7	65.0	303.6	296.4	7.12	42.643			
2,800.0	2,770.6	2,755.6	2,755.3	8.2	2.4	172.25	2.3	62.9	321.5	314.1	7.37	43.634			
2,900.0	2,869.1	2,855.5	2,855.1	8.5	2.5	173.02	3.5	61.1	338.8	331.2	7.62	44.469			
3,000.0	2,967.6	2,952.5	2,952.2	8.9	2.6	173.71	4.8	59.4	356.2	348.3	7.87	45.259			
3,100.0	3,066.1	3,049.9	3,049.5	9.2	2.7	174.34	5.7	57.3	374.1	366.0	8.12	46.061			
3,200.0	3,164.5	3,150.5	3,150.1	9.6	2.8	174.97	7.0	55.0	391.9	383.5	8.38	46.785			
3,300.0	3,263.0	3,251.1	3,250.7	9.9	2.8	175.54	8.7	53.3	408.9	400.3	8.63	47.370			
3,400.0	3,361.5	3,350.2	3,349.7	10.3	2.9	176.10	10.9	51.5	425.8	416.9	8.89	47.907			
3,500.0	3,460.0	3,449.5	3,448.9	10.6	3.0	176.71	13.7	49.3	442.6	433.4	9.14	48.399			
3,600.0	3,558.5	3,548.0	3,547.4	11.0	3.1	177.24	16.3	47.4	459.2	449.8	9.40	48.846			
3,700.0	3,657.0	3,644.5	3,643.8	11.3	3.2	177.71	18.7	45.4	476.1	466.5	9.66	49.298			
3,800.0	3,755.4	3,740.8	3,740.0	11.7	3.3	178.19	20.9	42.9	493.6	483.7	9.92	49.779			

# Anticollision Report

<b>Company:</b>	EnCana Oil & Gas (USA) Inc	<b>Local Co-ordinate Reference:</b>	Well Rodman Bruntz 2E-26H
<b>Project:</b>	DJ Wattenberg	<b>TVD Reference:</b>	WELL @ 5111.0ft (Original Well Elev)
<b>Reference Site:</b>	S26-T2N-R66W (Rodman Bruntz)	<b>MD Reference:</b>	WELL @ 5111.0ft (Original Well Elev)
<b>Site Error:</b>	0.0ft	<b>North Reference:</b>	True
<b>Reference Well:</b>	Rodman Bruntz 2E-26H	<b>Survey Calculation Method:</b>	Minimum Curvature
<b>Well Error:</b>	0.0ft	<b>Output errors are at</b>	2.00 sigma
<b>Reference Wellbore</b>	Hz	<b>Database:</b>	USA EDM 5000 Multi Users DB
<b>Reference Design:</b>	Plan #1	<b>Offset TVD Reference:</b>	Offset Datum

Offset Design S26-T2N-R66W (Rodman Bruntz) - Rodman Bruntz 2C-26H - Hz - Plan #1													Offset Site Error:	0.0 ft
Survey Program: 0-MWD													Offset Well Error:	0.0 ft
Reference		Offset		Semi Major Axis		Highside Toolface (°)	Distance		Total Uncertainty Axis	Separation Factor	Warning			
Measured Depth (ft)	Vertical Depth (ft)	Measured Depth (ft)	Vertical Depth (ft)	Reference (ft)	Offset (ft)		Offset Wellbore Centre +N/-S (ft)	+E/-W (ft)						
0.0	0.0	0.0	0.0	0.0	0.0	-89.95	0.0	-19.6	19.6					
100.0	100.0	99.0	99.0	0.2	0.2	-89.95	0.0	-19.6	19.6	19.3	0.30	64.791		
200.0	200.0	199.0	199.0	0.3	0.3	-89.95	0.0	-19.6	19.6	18.9	0.65	30.073 CC, ES		
300.0	300.0	299.0	299.0	0.5	0.5	-136.89	0.0	-19.6	20.2	19.2	1.00	20.197		
400.0	400.0	399.0	399.0	0.7	0.7	-141.50	0.0	-19.6	22.2	20.8	1.35	16.422		
500.0	499.9	498.9	498.9	0.9	0.8	-147.54	0.0	-19.6	25.7	24.0	1.70	15.121 SF		
600.0	599.7	598.7	598.7	1.1	1.0	-153.56	0.0	-19.6	31.1	29.0	2.05	15.130		
700.0	699.4	698.4	698.4	1.3	1.2	-158.77	0.0	-19.6	38.3	35.9	2.40	15.922		
800.0	798.9	797.9	797.9	1.5	1.4	-162.95	0.0	-19.6	47.3	44.6	2.75	17.209		
900.0	898.3	897.3	897.3	1.8	1.5	-166.19	0.0	-19.6	58.2	55.2	3.10	18.819		
1,000.0	997.4	996.4	996.4	2.0	1.7	-168.68	0.0	-19.6	71.0	67.6	3.44	20.648		
1,100.0	1,096.3	1,095.3	1,095.3	2.3	1.9	-170.60	0.0	-19.6	85.5	81.8	3.78	22.632		
1,200.0	1,194.9	1,193.6	1,193.6	2.7	2.1	-171.66	0.5	-20.2	102.0	97.9	4.12	24.763		
1,300.0	1,293.4	1,291.6	1,291.5	3.0	2.2	-171.70	2.1	-22.0	119.8	115.3	4.47	26.789		
1,400.0	1,391.9	1,389.4	1,389.3	3.3	2.4	-171.05	4.8	-25.1	137.9	133.0	4.83	28.560		
1,500.0	1,490.4	1,487.0	1,486.7	3.7	2.6	-169.94	8.5	-29.5	156.4	151.2	5.19	30.112		
1,600.0	1,588.9	1,584.4	1,583.8	4.0	2.8	-168.54	13.4	-35.1	175.4	169.8	5.57	31.474		
1,700.0	1,687.3	1,681.4	1,680.4	4.4	3.0	-166.94	19.2	-41.9	195.0	189.0	5.97	32.667		
1,800.0	1,785.8	1,778.1	1,776.5	4.7	3.2	-165.21	26.2	-50.0	215.2	208.9	6.38	33.712		
1,900.0	1,884.3	1,874.3	1,871.9	5.0	3.4	-163.41	34.1	-59.2	236.2	229.4	6.82	34.627		
2,000.0	1,982.8	1,970.0	1,966.7	5.4	3.7	-161.57	43.0	-69.6	258.0	250.8	7.28	35.433		
2,100.0	2,081.3	2,065.2	2,060.7	5.7	3.9	-159.72	52.9	-81.1	280.7	273.0	7.77	36.148		
2,200.0	2,179.7	2,159.9	2,153.8	6.1	4.2	-157.87	63.8	-93.7	304.4	296.1	8.27	36.791		
2,300.0	2,278.2	2,253.9	2,246.1	6.4	4.5	-156.05	75.5	-107.4	329.1	320.3	8.80	37.380		
2,400.0	2,376.7	2,347.2	2,337.4	6.8	4.8	-154.27	88.2	-122.1	354.8	345.5	9.35	37.932		
2,500.0	2,475.2	2,439.8	2,427.7	7.1	5.2	-152.54	101.7	-137.8	381.7	371.7	9.92	38.462		
2,600.0	2,573.7	2,531.7	2,516.8	7.5	5.5	-150.85	116.1	-154.5	409.7	399.2	10.51	38.981		
2,700.0	2,672.1	2,623.8	2,605.9	7.8	5.9	-149.21	131.3	-172.3	438.8	427.7	11.11	39.494		
2,800.0	2,770.6	2,718.6	2,697.4	8.2	6.3	-147.69	147.3	-190.9	468.6	456.8	11.72	39.962		
2,900.0	2,869.1	2,813.3	2,789.0	8.5	6.7	-146.34	163.3	-209.4	498.5	486.2	12.34	40.411		

# Anticollision Report

<b>Company:</b>	EnCana Oil & Gas (USA) Inc	<b>Local Co-ordinate Reference:</b>	Well Rodman Bruntz 2E-26H
<b>Project:</b>	DJ Wattenberg	<b>TVD Reference:</b>	WELL @ 5111.0ft (Original Well Elev)
<b>Reference Site:</b>	S26-T2N-R66W (Rodman Bruntz)	<b>MD Reference:</b>	WELL @ 5111.0ft (Original Well Elev)
<b>Site Error:</b>	0.0ft	<b>North Reference:</b>	True
<b>Reference Well:</b>	Rodman Bruntz 2E-26H	<b>Survey Calculation Method:</b>	Minimum Curvature
<b>Well Error:</b>	0.0ft	<b>Output errors are at</b>	2.00 sigma
<b>Reference Wellbore</b>	Hz	<b>Database:</b>	USA EDM 5000 Multi Users DB
<b>Reference Design:</b>	Plan #1	<b>Offset TVD Reference:</b>	Offset Datum

Offset Design S26-T2N-R66W (Rodman Bruntz) - Rodman Bruntz 2D-26H - Hz - Plan #1													Offset Site Error:	0.0 ft
Survey Program:		0-MWD											Offset Well Error:	0.0 ft
Reference		Offset		Semi Major Axis			Distance							Warning
Measured Depth (ft)	Vertical Depth (ft)	Measured Depth (ft)	Vertical Depth (ft)	Reference (ft)	Offset (ft)	Highside Toolface (°)	Offset Wellbore Centre +N/-S (ft)	+E/-W (ft)	Between Centres (ft)	Between Ellipses (ft)	Total Uncertainty Axis	Separation Factor		
0.0	0.0	0.0	0.0	0.0	0.0	-89.99	0.0	-50.3	50.3					
100.0	100.0	100.0	100.0	0.2	0.2	-89.99	0.0	-50.3	50.3	50.0	0.30	165.772		
198.6	198.6	198.6	198.6	0.3	0.3	-89.99	0.0	-50.3	50.3	49.7	0.65	77.700		
200.0	200.0	200.0	200.0	0.3	0.3	-89.99	0.0	-50.3	50.3	49.7	0.65	77.124	CC	
300.0	300.0	300.4	300.4	0.5	0.5	-134.99	0.8	-50.0	50.6	49.6	1.00	50.407	ES	
400.0	400.0	400.7	400.7	0.7	0.7	-134.38	3.2	-48.9	51.3	50.0	1.36	37.743		
500.0	499.9	501.1	501.0	0.9	0.9	-133.41	7.2	-47.0	52.6	50.9	1.73	30.438		
600.0	599.7	601.4	601.1	1.1	1.1	-132.14	12.7	-44.4	54.4	52.3	2.11	25.734		
700.0	699.4	701.7	701.1	1.3	1.3	-130.61	19.9	-41.1	56.7	54.2	2.52	22.482		
800.0	798.9	802.0	800.9	1.5	1.5	-128.92	28.6	-37.0	59.7	56.7	2.96	20.119		
900.0	898.3	902.3	900.5	1.8	1.8	-127.11	39.0	-32.2	63.1	59.7	3.44	18.337		
1,000.0	997.4	1,002.5	999.9	2.0	2.0	-125.26	50.9	-26.6	67.2	63.3	3.97	16.954		
1,100.0	1,096.3	1,102.7	1,098.9	2.3	2.3	-123.42	64.3	-20.4	72.0	67.4	4.54	15.859		
1,200.0	1,194.9	1,202.8	1,197.7	2.7	2.7	-121.63	79.3	-13.4	77.3	72.1	5.16	14.980		
1,300.0	1,293.4	1,302.6	1,296.0	3.0	3.0	-120.08	95.0	-6.0	83.0	77.2	5.80	14.307		
1,400.0	1,391.9	1,402.4	1,394.2	3.3	3.3	-118.73	110.8	1.3	88.7	82.3	6.45	13.749		
1,500.0	1,490.4	1,502.2	1,492.5	3.7	3.7	-117.54	126.5	8.6	94.5	87.4	7.11	13.284		
1,600.0	1,588.9	1,602.0	1,590.8	4.0	4.0	-116.49	142.2	15.9	100.3	92.5	7.78	12.891		
1,700.0	1,687.3	1,701.8	1,689.1	4.4	4.3	-115.56	157.9	23.3	106.2	97.7	8.46	12.556		
1,800.0	1,785.8	1,801.7	1,787.4	4.7	4.7	-114.72	173.6	30.6	112.1	102.9	9.13	12.269		
1,900.0	1,884.3	1,901.5	1,885.7	5.0	5.0	-113.96	189.3	37.9	118.0	108.1	9.81	12.019		
2,000.0	1,982.8	2,001.3	1,984.0	5.4	5.4	-113.28	205.0	45.2	123.9	113.4	10.50	11.801		
2,100.0	2,081.3	2,101.1	2,082.3	5.7	5.7	-112.66	220.7	52.6	129.8	118.6	11.18	11.609		
2,200.0	2,179.7	2,200.9	2,180.6	6.1	6.1	-112.10	236.4	59.9	135.7	123.9	11.87	11.439		
2,300.0	2,278.2	2,300.7	2,278.9	6.4	6.4	-111.58	252.1	67.2	141.7	129.1	12.55	11.288		
2,400.0	2,376.7	2,400.5	2,377.2	6.8	6.8	-111.10	267.8	74.5	147.7	134.4	13.24	11.152		
2,500.0	2,475.2	2,500.4	2,475.5	7.1	7.1	-110.66	283.5	81.9	153.6	139.7	13.93	11.029		
2,600.0	2,573.7	2,600.2	2,573.8	7.5	7.5	-110.26	299.3	89.2	159.6	145.0	14.62	10.918		
2,700.0	2,672.1	2,700.0	2,672.1	7.8	7.8	-109.88	315.0	96.5	165.6	150.3	15.31	10.818		
2,800.0	2,770.6	2,799.8	2,770.4	8.2	8.1	-109.53	330.7	103.8	171.6	155.6	16.00	10.726		
2,900.0	2,869.1	2,899.6	2,868.7	8.5	8.5	-109.20	346.4	111.2	177.6	160.9	16.69	10.641		
3,000.0	2,967.6	2,999.4	2,967.0	8.9	8.8	-108.90	362.1	118.5	183.6	166.3	17.38	10.564		
3,100.0	3,066.1	3,099.2	3,065.3	9.2	9.2	-108.61	377.8	125.8	189.7	171.6	18.08	10.493		
3,200.0	3,164.5	3,199.1	3,163.6	9.6	9.5	-108.34	393.5	133.1	195.7	176.9	18.77	10.427		
3,300.0	3,263.0	3,298.9	3,261.9	9.9	9.9	-108.09	409.2	140.5	201.7	182.2	19.46	10.365		
3,400.0	3,361.5	3,398.7	3,360.2	10.3	10.2	-107.85	424.9	147.8	207.7	187.6	20.15	10.308		
3,500.0	3,460.0	3,498.5	3,458.5	10.6	10.6	-107.63	440.6	155.1	213.8	192.9	20.84	10.255		
3,600.0	3,558.5	3,598.3	3,556.8	11.0	10.9	-107.42	456.3	162.4	219.8	198.3	21.54	10.206		
3,700.0	3,657.0	3,698.3	3,655.3	11.3	11.3	-107.35	471.6	169.6	225.8	203.6	22.21	10.167		
3,800.0	3,755.4	3,798.2	3,754.2	11.7	11.6	-107.71	485.3	176.0	231.8	208.9	22.84	10.147		
3,900.0	3,853.9	3,898.2	3,853.2	12.0	11.8	-108.47	497.5	181.6	237.7	214.2	23.43	10.144		
4,000.0	3,952.4	3,997.9	3,952.2	12.4	12.1	-109.61	508.1	186.6	243.6	219.6	23.97	10.163		
4,100.0	4,050.9	4,097.5	4,051.3	12.7	12.3	-111.08	517.1	190.8	249.6	225.2	24.45	10.208		
4,200.0	4,149.4	4,196.8	4,150.3	13.1	12.5	-112.87	524.5	194.2	255.9	231.0	24.88	10.286		
4,300.0	4,247.8	4,295.9	4,249.1	13.4	12.7	-114.93	530.3	197.0	262.6	237.3	25.24	10.404		
4,400.0	4,346.3	4,394.5	4,347.7	13.8	12.9	-117.25	534.6	199.0	269.8	244.3	25.52	10.571		
4,500.0	4,444.8	4,492.8	4,445.9	14.1	13.0	-119.77	537.4	200.2	277.7	252.0	25.73	10.795		
4,600.0	4,543.3	4,590.5	4,543.6	14.5	13.1	-122.47	538.6	200.8	286.5	260.7	25.85	11.086		
4,700.0	4,641.8	4,688.7	4,641.8	14.8	13.2	-125.27	538.6	200.8	296.2	270.3	25.91	11.435		
4,800.0	4,740.5	4,787.4	4,740.5	15.1	13.3	-127.77	538.6	200.8	305.8	279.9	25.95	11.785		
4,900.0	4,839.5	4,886.4	4,839.5	15.4	13.4	-129.88	538.6	200.8	314.8	288.8	26.00	12.107		
5,000.0	4,938.7	4,985.6	4,938.7	15.7	13.5	-131.64	538.6	200.8	323.1	297.0	26.08	12.389		

CC - Min centre to center distance or convergent point, SF - min separation factor, ES - min ellipse separation

# Anticollision Report

<b>Company:</b>	EnCana Oil & Gas (USA) Inc	<b>Local Co-ordinate Reference:</b>	Well Rodman Bruntz 2E-26H
<b>Project:</b>	DJ Wattenberg	<b>TVD Reference:</b>	WELL @ 5111.0ft (Original Well Elev)
<b>Reference Site:</b>	S26-T2N-R66W (Rodman Bruntz)	<b>MD Reference:</b>	WELL @ 5111.0ft (Original Well Elev)
<b>Site Error:</b>	0.0ft	<b>North Reference:</b>	True
<b>Reference Well:</b>	Rodman Bruntz 2E-26H	<b>Survey Calculation Method:</b>	Minimum Curvature
<b>Well Error:</b>	0.0ft	<b>Output errors are at</b>	2.00 sigma
<b>Reference Wellbore</b>	Hz	<b>Database:</b>	USA EDM 5000 Multi Users DB
<b>Reference Design:</b>	Plan #1	<b>Offset TVD Reference:</b>	Offset Datum

Offset Design S26-T2N-R66W (Rodman Bruntz) - Rodman Bruntz 2D-26H - Hz - Plan #1													Offset Site Error:	0.0 ft
Survey Program: 0-MWD													Offset Well Error:	0.0 ft
Reference		Offset		Semi Major Axis			Distance						Warning	
Measured Depth (ft)	Vertical Depth (ft)	Measured Depth (ft)	Vertical Depth (ft)	Reference (ft)	Offset (ft)	Highside Toolface (°)	Offset Wellbore Centre +N/-S (ft)	+E/-W (ft)	Between Centres (ft)	Between Ellipses (ft)	Total Uncertainty Axis	Separation Factor		
5,100.0	5,038.1	5,085.0	5,038.1	15.9	13.7	-133.09	538.6	200.8	330.4	304.2	26.17	12.624		
5,200.0	5,137.7	5,184.6	5,137.7	16.2	13.8	-134.26	538.6	200.8	336.6	310.3	26.29	12.807		
5,300.0	5,237.4	5,284.3	5,237.4	16.3	13.9	-135.17	538.6	200.8	341.8	315.4	26.43	12.934		
5,400.0	5,337.2	5,384.1	5,337.2	16.5	14.0	-135.85	538.6	200.8	345.8	319.2	26.59	13.004		
5,500.0	5,437.2	5,484.1	5,437.2	16.7	14.1	-136.31	538.6	200.8	348.5	321.8	26.78	13.016		
5,600.0	5,537.1	5,584.0	5,537.1	16.8	14.2	-136.56	538.6	200.8	350.1	323.1	26.99	12.970		
5,700.0	5,637.1	5,684.0	5,637.1	16.9	14.4	-91.41	538.6	200.8	350.4	323.1	27.23	12.868		
5,800.0	5,737.1	5,784.0	5,737.1	17.0	14.5	-91.41	538.6	200.8	350.4	322.9	27.48	12.748		
5,900.0	5,837.1	5,884.0	5,837.1	17.1	14.6	-91.41	538.6	200.8	350.4	322.6	27.74	12.630		
6,000.0	5,937.1	5,984.0	5,937.1	17.2	14.7	-91.41	538.6	200.8	350.4	322.4	28.00	12.513		
6,100.0	6,037.1	6,084.0	6,037.1	17.3	14.8	-91.41	538.6	200.8	350.4	322.1	28.26	12.398		
6,200.0	6,137.1	6,184.0	6,137.1	17.4	15.0	-91.41	538.6	200.8	350.4	321.8	28.52	12.283		
6,300.0	6,237.1	6,284.0	6,237.1	17.5	15.1	-91.41	538.6	200.8	350.4	321.6	28.79	12.170		
6,400.0	6,337.1	6,384.0	6,337.1	17.6	15.2	-91.41	538.6	200.8	350.4	321.3	29.06	12.059		
6,500.0	6,437.1	6,484.0	6,437.1	17.7	15.4	-91.41	538.6	200.8	350.4	321.0	29.32	11.948		
6,600.0	6,537.1	6,584.0	6,537.1	17.8	15.5	-91.41	538.6	200.8	350.4	320.8	29.59	11.839		
6,700.0	6,637.1	6,684.0	6,637.1	18.0	15.6	-91.41	538.6	200.8	350.4	320.5	29.87	11.731		
6,800.0	6,736.9	6,783.8	6,736.9	18.0	15.7	89.49	538.6	200.8	350.3	320.1	30.19	11.602		
6,822.8	6,759.5	6,806.4	6,759.5	18.0	15.8	90.00	538.6	200.8	350.3	320.0	30.28	11.569		
6,900.0	6,835.0	6,881.9	6,835.0	17.9	15.9	92.53	538.6	200.8	350.6	320.0	30.67	11.433		
7,000.0	6,929.4	6,982.2	6,935.0	17.7	15.9	96.73	532.6	200.8	352.9	321.9	30.97	11.394		
7,100.0	7,018.4	7,086.8	7,037.4	17.5	15.8	100.85	511.4	200.8	357.1	326.3	30.82	11.587		
7,200.0	7,100.2	7,196.0	7,139.8	17.2	15.6	104.75	473.7	200.8	363.0	332.8	30.21	12.016		
7,300.0	7,173.2	7,310.2	7,239.4	16.9	15.2	108.34	418.1	200.8	370.0	340.8	29.21	12.666		
7,400.0	7,236.0	7,429.6	7,332.7	16.6	14.8	111.53	343.9	200.8	377.6	349.6	28.00	13.489		
7,500.0	7,287.3	7,554.0	7,415.5	16.4	14.5	114.23	251.2	200.8	385.1	358.3	26.79	14.373		
7,600.0	7,326.3	7,683.1	7,483.0	16.4	14.2	116.37	141.4	200.8	391.6	365.7	25.91	15.114		
7,700.0	7,352.0	7,816.1	7,530.9	16.6	14.3	117.88	17.5	200.8	396.6	370.9	25.66	15.453		
7,800.0	7,364.1	7,951.8	7,555.3	16.9	14.7	118.71	-115.7	200.8	399.4	373.2	26.26	15.210		
7,900.0	7,365.0	8,068.4	7,558.0	17.4	15.4	118.85	-232.3	200.8	399.9	372.5	27.46	14.566		
8,000.0	7,365.0	8,168.4	7,558.0	18.1	16.2	118.85	-332.3	200.8	399.9	371.1	28.83	13.873		
8,100.0	7,365.0	8,268.4	7,558.0	18.9	17.1	118.85	-432.3	200.8	399.9	369.5	30.44	13.136		
8,200.0	7,365.0	8,368.4	7,558.0	19.8	18.1	118.85	-532.3	200.8	399.9	367.6	32.28	12.390		
8,300.0	7,365.0	8,468.4	7,558.0	20.8	19.2	118.85	-632.3	200.8	399.9	365.6	34.29	11.664		
8,400.0	7,365.0	8,568.4	7,558.0	21.9	20.4	118.85	-732.3	200.8	399.9	363.5	36.45	10.973		
8,500.0	7,365.0	8,668.4	7,558.0	23.1	21.7	118.85	-832.3	200.8	399.9	361.2	38.73	10.325		
8,600.0	7,365.0	8,768.4	7,558.0	24.4	23.1	118.85	-932.3	200.8	399.9	358.8	41.12	9.726		
8,700.0	7,365.0	8,868.4	7,558.0	25.7	24.5	118.85	-1,032.3	200.8	399.9	356.3	43.59	9.174		
8,800.0	7,365.0	8,968.4	7,558.0	27.1	25.9	118.85	-1,132.3	200.8	399.9	353.8	46.14	8.667		
8,900.0	7,365.0	9,068.4	7,558.0	28.5	27.4	118.85	-1,232.3	200.8	399.9	351.2	48.75	8.203		
9,000.0	7,365.0	9,168.4	7,558.0	30.0	28.9	118.85	-1,332.3	200.8	399.9	348.5	51.41	7.779		
9,100.0	7,365.0	9,268.4	7,558.0	31.5	30.4	118.85	-1,432.3	200.8	399.9	345.8	54.12	7.390		
9,200.0	7,365.0	9,368.4	7,558.0	33.0	32.0	118.85	-1,532.3	200.8	399.9	343.1	56.86	7.033		
9,300.0	7,365.0	9,468.4	7,558.0	34.5	33.6	118.85	-1,632.3	200.8	399.9	340.3	59.64	6.706		
9,400.0	7,365.0	9,568.4	7,558.0	36.1	35.2	118.85	-1,732.3	200.8	399.9	337.5	62.44	6.405		
9,500.0	7,365.0	9,668.4	7,558.0	37.6	36.8	118.85	-1,832.3	200.8	399.9	334.7	65.27	6.127		
9,600.0	7,365.0	9,768.4	7,558.0	39.2	38.4	118.85	-1,932.3	200.8	399.9	331.8	68.12	5.871		
9,700.0	7,365.0	9,868.4	7,558.0	40.8	40.0	118.85	-2,032.3	200.8	399.9	328.9	70.99	5.633		
9,800.0	7,365.0	9,968.4	7,558.0	42.4	41.7	118.85	-2,132.3	200.8	399.9	326.0	73.88	5.413		
9,900.0	7,365.0	10,068.4	7,558.0	44.1	43.3	118.85	-2,232.3	200.8	399.9	323.1	76.78	5.209		
10,000.0	7,365.0	10,168.4	7,558.0	45.7	45.0	118.85	-2,332.3	200.8	399.9	320.2	79.69	5.018		
10,100.0	7,365.0	10,268.4	7,558.0	47.3	46.7	118.85	-2,432.3	200.8	399.9	317.3	82.62	4.840		

CC - Min centre to center distance or convergent point, SF - min separation factor, ES - min ellipse separation

# Anticollision Report

<b>Company:</b>	EnCana Oil & Gas (USA) Inc	<b>Local Co-ordinate Reference:</b>	Well Rodman Bruntz 2E-26H
<b>Project:</b>	DJ Wattenberg	<b>TVD Reference:</b>	WELL @ 5111.0ft (Original Well Elev)
<b>Reference Site:</b>	S26-T2N-R66W (Rodman Bruntz)	<b>MD Reference:</b>	WELL @ 5111.0ft (Original Well Elev)
<b>Site Error:</b>	0.0ft	<b>North Reference:</b>	True
<b>Reference Well:</b>	Rodman Bruntz 2E-26H	<b>Survey Calculation Method:</b>	Minimum Curvature
<b>Well Error:</b>	0.0ft	<b>Output errors are at</b>	2.00 sigma
<b>Reference Wellbore</b>	Hz	<b>Database:</b>	USA EDM 5000 Multi Users DB
<b>Reference Design:</b>	Plan #1	<b>Offset TVD Reference:</b>	Offset Datum

Offset Design S26-T2N-R66W (Rodman Bruntz) - Rodman Bruntz 2D-26H - Hz - Plan #1													Offset Site Error:	0.0 ft
Survey Program: 0-MWD													Offset Well Error:	0.0 ft
Reference		Offset		Semi Major Axis		Distance		Total		Separation		Warning		
Measured Depth (ft)	Vertical Depth (ft)	Measured Depth (ft)	Vertical Depth (ft)	Reference (ft)	Offset (ft)	Highside Toolface (°)	Offset Wellbore Centre +N/-S (ft)	+E/-W (ft)	Between Centres (ft)	Between Ellipses (ft)	Uncertainty Axis			
10,200.0	7,365.0	10,368.4	7,558.0	49.0	48.3	118.85	-2,532.3	200.8	399.9	314.4	85.56	4.674		
10,300.0	7,365.0	10,468.4	7,558.0	50.7	50.0	118.85	-2,632.3	200.8	399.9	311.4	88.51	4.519		
10,400.0	7,365.0	10,568.4	7,558.0	52.3	51.7	118.85	-2,732.3	200.8	399.9	308.5	91.46	4.373		
10,500.0	7,365.0	10,668.4	7,558.0	54.0	53.4	118.85	-2,832.3	200.8	399.9	305.5	94.42	4.235		
10,600.0	7,365.0	10,768.4	7,558.0	55.7	55.1	118.85	-2,932.3	200.8	399.9	302.5	97.40	4.106		
10,700.0	7,365.0	10,868.4	7,558.0	57.3	56.8	118.85	-3,032.3	200.8	399.9	299.6	100.37	3.984		
10,800.0	7,365.0	10,968.4	7,558.0	59.0	58.5	118.85	-3,132.3	200.8	399.9	296.6	103.36	3.869		
10,900.0	7,365.0	11,068.4	7,558.0	60.7	60.2	118.85	-3,232.3	200.8	399.9	293.6	106.34	3.761		
11,000.0	7,365.0	11,168.4	7,558.0	62.4	61.9	118.85	-3,332.3	200.8	399.9	290.6	109.34	3.658		
11,100.0	7,365.0	11,268.4	7,558.0	64.1	63.6	118.85	-3,432.3	200.8	399.9	287.6	112.34	3.560		
11,200.0	7,365.0	11,368.4	7,558.0	65.8	65.3	118.85	-3,532.3	200.8	399.9	284.6	115.34	3.468		
11,300.0	7,365.0	11,468.4	7,558.0	67.5	67.0	118.85	-3,632.3	200.8	399.9	281.6	118.34	3.379		
11,400.0	7,365.0	11,568.4	7,558.0	69.2	68.7	118.85	-3,732.3	200.8	399.9	278.6	121.35	3.296		
11,500.0	7,365.0	11,668.4	7,558.0	70.9	70.5	118.85	-3,832.3	200.8	399.9	275.6	124.37	3.216		
11,600.0	7,365.0	11,768.4	7,558.0	72.6	72.2	118.85	-3,932.3	200.8	399.9	272.6	127.38	3.140		
11,700.0	7,365.0	11,868.4	7,558.0	74.3	73.9	118.85	-4,032.3	200.8	399.9	269.5	130.40	3.067		
11,800.0	7,365.0	11,968.4	7,558.0	76.0	75.6	118.85	-4,132.3	200.8	399.9	266.5	133.42	2.997		
11,900.0	7,365.0	12,068.4	7,558.0	77.7	77.3	118.85	-4,232.3	200.8	399.9	263.5	136.45	2.931		
12,000.0	7,365.0	12,168.4	7,558.0	79.5	79.1	118.85	-4,332.3	200.8	399.9	260.5	139.48	2.867		
12,100.0	7,365.0	12,268.4	7,558.0	81.2	80.8	118.85	-4,432.3	200.8	399.9	257.4	142.50	2.807		
12,200.0	7,365.0	12,368.4	7,558.0	82.9	82.5	118.85	-4,532.3	200.8	399.9	254.4	145.54	2.748		
12,300.0	7,365.0	12,468.4	7,558.0	84.6	84.2	118.85	-4,632.3	200.8	399.9	251.4	148.57	2.692		
12,400.0	7,365.0	12,568.4	7,558.0	86.3	86.0	118.85	-4,732.3	200.8	399.9	248.3	151.60	2.638		
12,500.0	7,365.0	12,668.4	7,558.0	88.1	87.7	118.85	-4,832.3	200.8	399.9	245.3	154.64	2.586		
12,600.0	7,365.0	12,768.4	7,558.0	89.8	89.4	118.85	-4,932.3	200.8	399.9	242.3	157.68	2.536		
12,700.0	7,365.0	12,868.4	7,558.0	91.5	91.2	118.85	-5,032.3	200.8	399.9	239.2	160.72	2.488		
12,720.7	7,365.0	12,889.1	7,558.0	91.9	91.5	118.85	-5,053.0	200.8	399.9	238.6	161.35	2.479		
12,800.0	7,365.0	12,962.5	7,558.0	93.2	92.8	118.82	-5,126.3	200.4	400.4	236.6	163.71	2.445		
12,900.0	7,365.0	13,056.1	7,558.0	95.0	94.4	118.63	-5,219.9	197.6	403.0	236.0	166.94	2.414		
13,000.0	7,365.0	13,156.1	7,558.0	96.7	96.1	118.39	-5,319.8	194.1	406.0	235.7	170.35	2.384		
13,100.0	7,365.0	13,256.0	7,558.0	98.4	97.9	118.16	-5,419.7	190.6	409.1	235.3	173.76	2.354		
13,200.0	7,365.0	13,355.9	7,558.0	100.1	99.6	117.93	-5,519.6	187.1	412.2	235.0	177.18	2.326		
13,300.0	7,365.0	13,455.9	7,558.0	101.9	101.3	117.71	-5,619.5	183.6	415.3	234.7	180.60	2.299		
13,400.0	7,365.0	13,555.8	7,558.0	103.6	103.1	117.49	-5,719.3	180.2	418.4	234.3	184.03	2.273		
13,500.0	7,365.0	13,655.8	7,558.0	105.3	104.8	117.27	-5,819.2	176.7	421.5	234.0	187.47	2.248		
13,600.0	7,365.0	13,755.7	7,558.0	107.1	106.5	117.05	-5,919.1	173.2	424.6	233.7	190.91	2.224		
13,700.0	7,365.0	13,855.6	7,558.0	108.8	108.3	116.84	-6,019.0	169.7	427.7	233.3	194.36	2.201		
13,800.0	7,365.0	13,955.6	7,558.0	110.5	110.0	116.63	-6,118.8	166.2	430.8	233.0	197.81	2.178		
13,900.0	7,365.0	14,055.5	7,558.0	112.3	111.7	116.42	-6,218.7	162.7	433.9	232.7	201.27	2.156		
14,000.0	7,365.0	14,155.5	7,558.0	114.0	113.5	116.22	-6,318.6	159.2	437.1	232.3	204.73	2.135		
14,100.0	7,365.0	14,255.4	7,558.0	115.7	115.2	116.02	-6,418.5	155.7	440.2	232.0	208.19	2.114		
14,200.0	7,365.0	14,355.3	7,558.0	117.5	117.0	115.82	-6,518.4	152.2	443.3	231.7	211.66	2.095		
14,300.0	7,365.0	14,455.3	7,558.0	119.2	118.7	115.62	-6,618.2	148.8	446.5	231.3	215.13	2.075		
14,400.0	7,365.0	14,555.2	7,558.0	121.0	120.4	115.43	-6,718.1	145.3	449.6	231.0	218.61	2.057		
14,490.6	7,365.0	14,645.8	7,558.0	122.5	122.0	115.26	-6,808.6	142.1	452.5	230.7	221.76	2.040 SF		

## Anticollision Report

<b>Company:</b>	EnCana Oil & Gas (USA) Inc	<b>Local Co-ordinate Reference:</b>	Well Rodman Bruntz 2E-26H
<b>Project:</b>	DJ Wattenberg	<b>TVD Reference:</b>	WELL @ 5111.0ft (Original Well Elev)
<b>Reference Site:</b>	S26-T2N-R66W (Rodman Bruntz)	<b>MD Reference:</b>	WELL @ 5111.0ft (Original Well Elev)
<b>Site Error:</b>	0.0ft	<b>North Reference:</b>	True
<b>Reference Well:</b>	Rodman Bruntz 2E-26H	<b>Survey Calculation Method:</b>	Minimum Curvature
<b>Well Error:</b>	0.0ft	<b>Output errors are at</b>	2.00 sigma
<b>Reference Wellbore</b>	Hz	<b>Database:</b>	USA EDM 5000 Multi Users DB
<b>Reference Design:</b>	Plan #1	<b>Offset TVD Reference:</b>	Offset Datum

Reference Depths are relative to WELL @ 5111.0ft (Original Well Elev)  
Offset Depths are relative to Offset Datum  
Central Meridian is -105.500000 °

Coordinates are relative to: Rodman Bruntz 2E-26H  
Coordinate System is US State Plane 1983, Colorado Northern Zone  
Grid Convergence at Surface is: 0.49°

