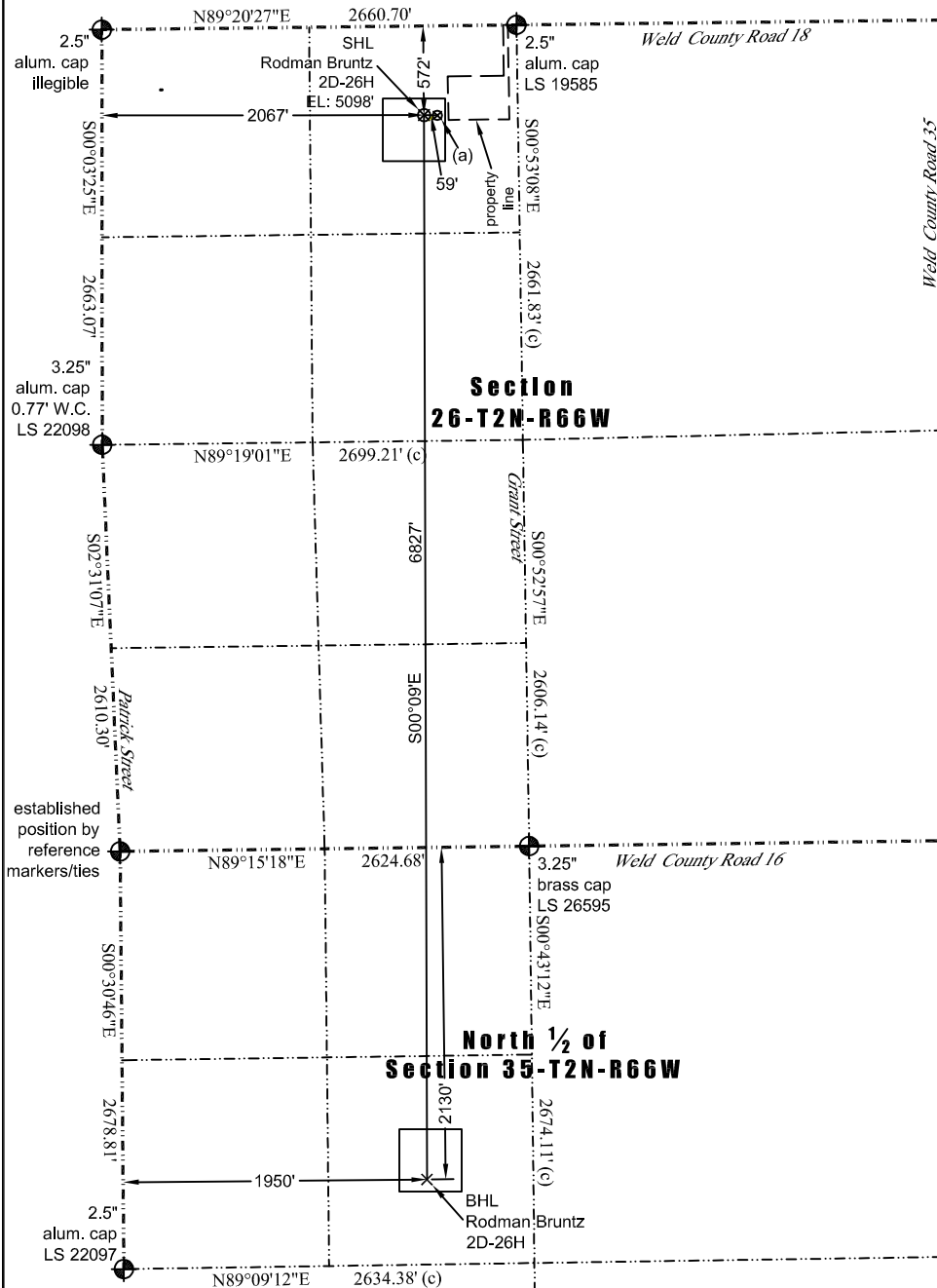


JR Land Surveying, LLC

8114 Northstar Drive
Windsor, Colorado 80528
P. 970-576-4641

WELL LOCATION CERTIFICATE

THIS MAP DOES NOT REPRESENT A BOUNDARY SURVEY



(a) Existing Well Data:
Rodman Bruntz 21-26
Latitude: N 40.11490°
Longitude: W 104.74642°
FNL: 572'
FWL: 2126'
ELEV: 5099'
PDOP: 1.9

Proposed Surface Hole Data:

Latitude: N 40.11490° (BHL: 40.09616°)
Longitude: W 104.74663° (BHL: 104.74677°)
PDOP: 2.0

Nearest:

Building: 349' northeast
Above Ground Utility: 602' north
Public Road: 557' north
Railroad: 17,285' west
Property Line: 156' east
Well Window: SHL is 105' inside
Existing Well: Rodman Bruntz 21-26,
59' east

In accordance with a request from Jay Knutson of EnCana Oil & Gas (USA) Inc., JR Land Surveying, LLC has determined the location of the **Rodman Bruntz 2D-26H** well site to be SHL: 572' FNL and 2067' FWL, (BHL 2130' FNL and 1950' FWL), as measured at ninety (90) degrees from the section lines of Section 26, and Section 35, Township 2 North, Range 66 West of the 6th Principal Meridian, Weld County Colorado.

Notes:

- 1) Bearings and distances based on NAD 83 Colorado North State Plane Coordinates using RTK GPS observations taken 9/28/12 by operator John Rice.
- 2) Conversion factor to ground (1.0002810046).
- 3) Elevations based on NAVD 88 GPS heights and Geoid 2003 corrections.
- 4) See Location Drawing for visible improvements within 400 feet of Pad Site.
- 5) The surface use is an uncultivated field.

NOTICE: According to Colorado law you must commence any legal action based upon any defect in this W.L.C. within three years after you first discover such defect. In no event may any action based upon any defect in this W.L.C. be commenced more than ten years from this said date of the certification shown hereon.

I hereby certify that this Well Location Certificate was prepared by me or under my direct supervision on 10/7/2012 for and on behalf of EnCana Oil & Gas (USA) Inc. That it is not a Land Survey Plat or an Improvement Survey Plat and that it is not to be relied upon for establishment of fences, buildings, or other future improvement lines.

John Robert McGehee LS#38219
Well: Rodman Bruntz 2D-26H WLC