

SECTION BREAKDOWN T4S, R64W, 6th P.M.

W 1/4 Cor. Sec. 36
1997 Priv. Alumn. Cap.
1.5' Below Ground
Lot: 39.745547
Long: 104.508100

ConocoPhillips Company
Well location, CLINE #4-64-2-1H, located as shown in the SE 1/4 NE 1/4 of Section 2, T4S, R64W, 6th P.M., Arapahoe County, Colorado.

2004 Priv. Alumn. Cap.
In Range Box
PLS 36560
Lot: 39.736550
Long: 104.526989

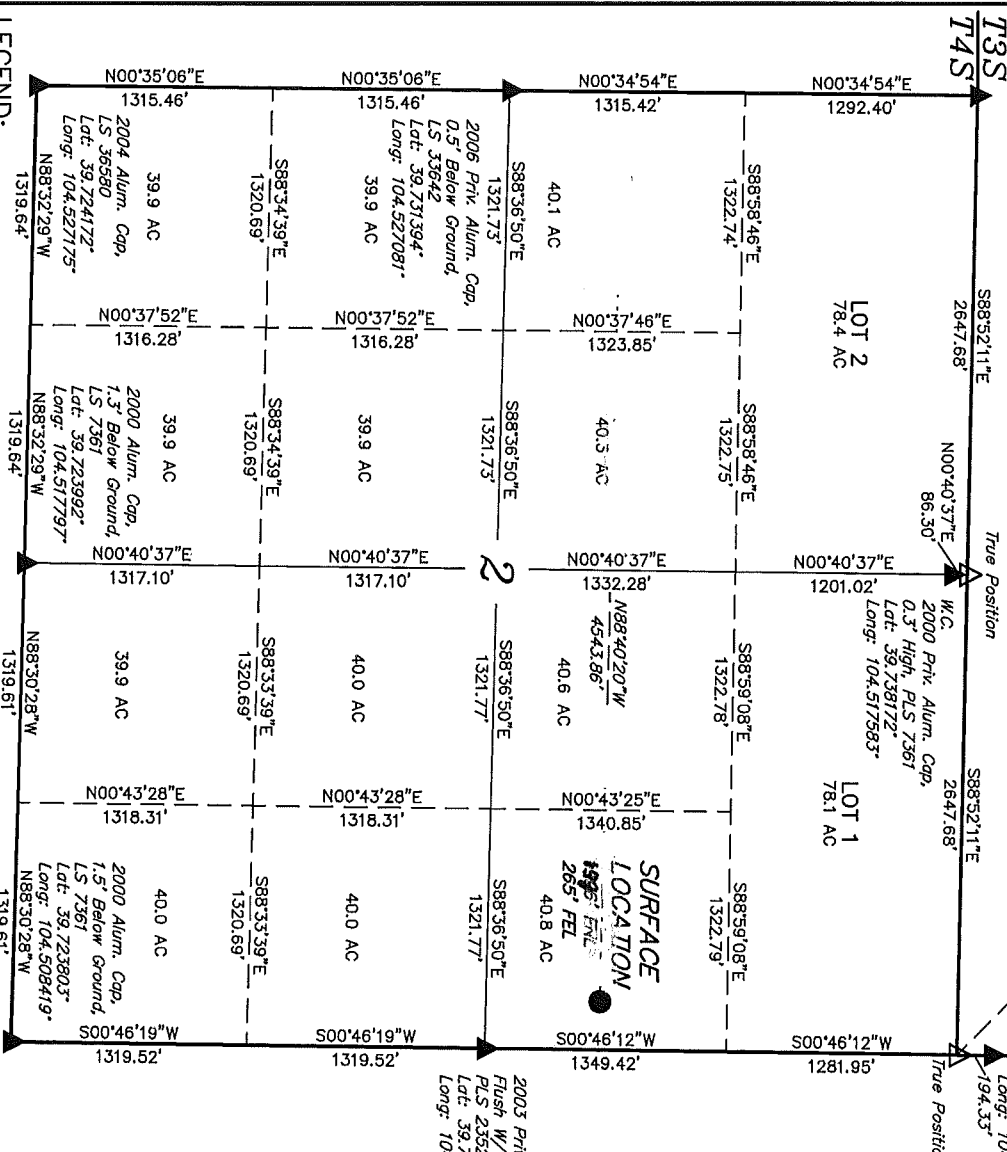
W.C.
1987 Priv. Alumn. Cap.
0.1' High
Lot: 39.738800
Long: 104.508164

BASIS OF ELEVATION

BENCHMARK 574 LOCATED ON THE SECTION LINE BETWEEN SECTIONS 12 & 13, T5S, R64W, 6th. P.M., TAKEN FROM 1988 PUBLISHED DATUM BY THE UNITED STATES DEPARTMENT OF THE INTERIOR, GEOLOGICAL SURVEY AS BEING 6054.61 FEET.

BASIS OF BEARINGS

BASIS OF BEARINGS IS A G.P.S. OBSERVATION.

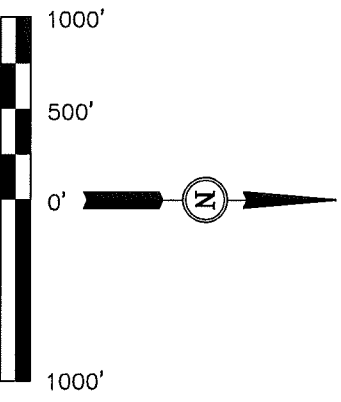


LEGEND:

- = 90° SYMBOL
- ▲ = PROPOSED WELL HEAD.
- △ = SECTION CORNERS LOCATED
- △ = SECTION CORNERS
- RE-ESTABLISHED. (Not Set on Ground.)

PDOP = 2.1

NAD 83 (SURFACE LOCATION)	
LATITUDE = 39°43'58.09" (39.732803)	
LONGITUDE = 104°30'33.14" (104.509206)	
NAD 27 (SURFACE LOCATION)	
LATITUDE = 39°45'58.14" (39.732817)	
LONGITUDE = 104°30'31.27" (104.508686)	



CERTIFICATE

THIS IS TO CERTIFY THAT THE ABOVE PLATS WERE PREPARED FROM FIELD NOTES OF ACTUAL SURVEYS MADE BY ME OR UNDER MY SUPERVISION AND THAT THE SAME ARE TRUE AND CORRECT TO THE BEST OF MY KNOWLEDGE AND BELIEF.

REGISTERED LAND SURVEYOR
STATE OF COLORADO
No. 13,412

UTAH ENGINEERING & LAND SURVEYING
85 SOUTH 200 EAST - VERNAL, UTAH 84078
(435) 789-1017

SCALE	DATE SURVEYED:	DATE DRAWN:
1" = 1000'	10-29-12	11-06-12
PARTY	REFERENCES	
Z.B. A.G. J.M.H.	G.L.O. PLAT	
WEATHER	FILE	
COOL	ConocoPhillips Company	