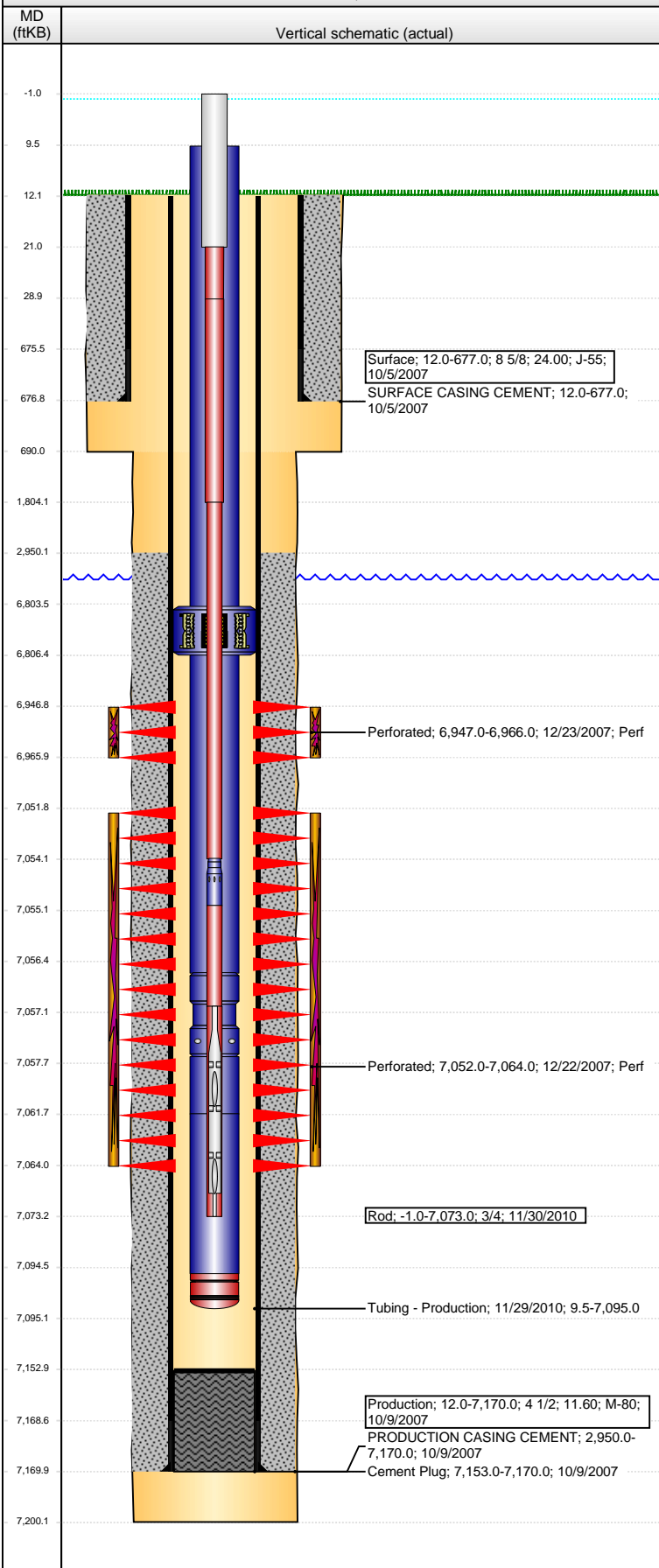


Well Name: DILLARD 04-44

VERTICAL - ORIGINAL HOLE, 4/26/2013 11:01:33 AM



Well Header

API	Business Unit	District	Well Config
05-123-26342	WATTENBERG	15	VERTICAL
Original KB Elevation (ft)	KB - GL / MSL (ftKB)	Spud Date	P & A Date
4,878.00	12.00	10/4/2007	
Comment			

Directions To Well

Congressional Location

Quarter 1	Quarter 2	Quarter 3	Quarter 4	Section	Township	Twonshp N...	Range	Rng E/W Dir
		SE	SE	4	7	N	64	W

Bottom Hole Location

North-South Distance (ft)	From N or S Line	East-West Distance (ft)	From E or W Line

Plug Back Total Depths

Date	Depth (ftKB)	Method	Com
10/9/2007	7,153.0	CASING TALLY	

Wellbore Sections

Section Des	Size (in)	Act Top (ftKB)	Act Btm (ftKB)
SURFACE	12 1/4	12.0	690.0
PRODUCTION	7 7/8	690.0	7,200.0

Zone Statuses

Zone Name	Status Date	Status	Job
CODELL	3/20/2008	PR	DRILLING/COMPLETION - ORIGINAL, 10/4/2007 00:00
NIOBRARA	3/20/2008	PR	DRILLING/COMPLETION - ORIGINAL, 10/4/2007 00:00

Casing Strings

Surface, 677.0ftKB

Casing Description	Run Date	OD (in)	Wt/Len (l...)	Grade	Top (ftKB)	MD (ftKB)
Surface	10/5/2007	8 5/8	24.00	J-55	12.0	677.0

Production, 7,170.0ftKB

Casing Description	Run Date	OD (in)	Wt/Len (l...)	Grade	Top (ftKB)	MD (ftKB)
Production	10/9/2007	4 1/2	11.60	M-80	12.0	7,170.0

Cement

Description	Top Depth (ftKB)	Bottom Depth (ftKB)
SURFACE CASING CEMENT	12.0	677.0
PRODUCTION CASING CEMENT	2,950.0	7,170.0
Cement Plug	7,153.0	7,170.0

Tubing Components

Item Des	OD (in)	Wt (lb/ft)	Grade	Jts	Len (ft)	Btm (ftKB)	Btm (TVD) (ftKB)
EUE 8rd Tubing	2 3/8	4.70	J-55	219	6,794.00	6,803.5	
Anchor/catcher	3.99			1	3.00	6,806.5	
EUE 8rd Tubing	2 3/8	4.70	J-55	8	250.00	7,056.5	
Pump Seating Nipple	2 3/8			1	1.10	7,057.6	
PERF SUB	2 3/8	4.70	J-55	1	4.00	7,061.6	
EUE 8rd Tubing	2 3/8	4.70	J-55	1	32.90	7,094.5	
Bull Plug	2 3/8			1	0.45	7,095.0	

Rods & Pumps

Rod Description	Run Date	Set Depth (ftKB)
Rod	11/30/2010	7,073.0

Comment

Item Description	OD Nominal (in)	Joints	Length (ft)
Polished Rod	1 1/4	1	22.00
Item Description	OD Nominal (in)	Joints	Length (ft)
Sucker Rod	7/8	1	8.00
Item Description	OD Nominal (in)	Joints	Length (ft)
Sucker Rod	7/8	71	1,775.00
Item Description	OD Nominal (in)	Joints	Length (ft)
Sucker Rod	3/4	210	5,250.00
Item Description	OD Nominal (in)	Joints	Length (ft)
Shear Coupling	3/4	1	1.00
Item Description	OD Nominal (in)	Joints	Length (ft)
Sucker Rod	3/4	1	2.00
Item Description	OD Nominal (in)	Joints	Length (ft)
RHAC Pump - THD	3/4	1	16.00

Well Name: DILLARD 04-44

VERTICAL - ORIGINAL HOLE, 4/26/2013 11:01:34 AM

Perforation Data

Zone	Bnch/St g	Entered Shot Total	Top (ftKB)	Btm (ftKB)	Date
NIOBRARA, ORIGINAL HOLE		76	6,947.00	6,966.00	12/23/2007
CODELL, ORIGINAL HOLE		48	7,052.00	7,064.00	12/22/2007

Stimulations & Treatments

Date	Zone	Primary Job Type
12/23/2007	CODELL, ORIGINAL HOLE	DRILLING/COMPLETION - ORIGINAL
Technical Result	Tech Result Details	Tech Result Note
Comment		

Date	Zone	Primary Job Type
12/23/2007	NIOBRARA, ORIGINAL HOLE	DRILLING/COMPLETION - ORIGINAL
Technical Result	Tech Result Details	Tech Result Note
Comment		

Other In Hole

Run Date	Des	OD (in)	Top (ftKB)	Btm (ftKB)

Logs

Date	Type	Top (ftKB)	Btm (ftKB)
10/8/2007	COMPENSATED DENSITY	3,640.0	7,182.0
10/8/2007	INDUCTION	689.0	7,202.0
12/19/2007	CBL/CCL/GR	2,850.0	7,130.0

