

Noble Energy

Weld County, CO (NAD 83)

Sec. 12-T6N-R63W (Wells Ranch 12 South PAD)

Wells Ranch AA12-63-1HN

MWD Survey

Sperry Drilling Services

Final Survey Report

03 January, 2013

Well Coordinates: 1,425,798.62 N, 3,312,593.15 E (40° 29' 48.41" N, 104° 22' 33.56" W)

Ground Level: 4,857.00 ft

Local Coordinate Origin:

Centered on Well Wells Ranch AA12-63-1HN

Viewing Datum:

KB @ 4881.00ft (H&P 315)

TVDs to System:

N

North Reference:

Grid

Unit System:

API - US Survey Feet - Custom

Geodetic Scale Factor Applied

Version: 2003.16 Build: 431

HALLIBURTON

Design Report for Wells Ranch AA12-63-1HN - MWD Survey

Measured Depth (ft)	Inclination (°)	Azimuth (°)	Vertical Depth (ft)	+N/-S (ft)	+E/-W (ft)	Vertical Section (ft)	Dogleg Rate (°/100ft)
0.00	0.00	0.00	0.00	0.00	0.00	0.00	0.00
722.00	0.00	0.00	722.00	0.00	0.00	0.00	0.00
Tie On Surface Casing Assumed Vertical							
802.00	0.00	290.82	802.00	0.00	0.00	0.00	0.00
First MWD Survey							
1,079.00	0.43	210.18	1,079.00	-0.90	-0.52	0.55	0.16
1,356.00	0.20	149.76	1,355.99	-2.21	-0.80	0.87	0.14
1,641.00	0.25	80.42	1,640.99	-2.54	0.06	0.01	0.09
1,736.00	0.21	169.77	1,735.99	-2.68	0.30	-0.22	0.34
1,831.00	2.71	115.99	1,830.95	-3.83	2.35	-2.23	2.73
1,926.00	5.16	124.10	1,925.72	-7.21	7.90	-7.68	2.64
2,021.00	6.53	119.41	2,020.23	-12.26	16.15	-15.77	1.53
2,116.00	8.07	122.95	2,114.46	-18.54	26.45	-25.88	1.69
2,211.00	7.59	121.00	2,208.57	-25.40	37.42	-36.64	0.58
2,306.00	7.26	121.06	2,302.77	-31.73	47.94	-46.96	0.35
2,401.00	6.52	117.59	2,397.09	-37.32	57.87	-56.71	0.89
2,495.00	7.20	117.40	2,490.41	-42.51	67.83	-66.51	0.72
2,590.00	6.87	118.79	2,584.70	-47.98	78.09	-76.61	0.39
2,685.00	8.11	120.81	2,678.89	-54.15	88.83	-87.15	1.33
2,780.00	7.34	124.31	2,773.02	-61.00	99.59	-97.71	0.95
2,875.00	7.56	123.66	2,867.22	-67.89	109.81	-107.71	0.25
2,970.00	6.97	124.21	2,961.46	-74.59	119.78	-117.47	0.63
3,064.00	7.03	121.31	3,054.76	-80.79	129.41	-126.91	0.38
3,159.00	5.50	119.40	3,149.19	-86.04	138.34	-135.68	1.63
3,254.00	5.12	116.26	3,243.78	-90.16	146.11	-143.32	0.50
3,349.00	4.38	126.09	3,338.45	-94.17	152.84	-149.93	1.16
3,444.00	1.49	125.34	3,433.32	-97.02	156.78	-153.78	3.04
3,539.00	0.97	332.40	3,528.31	-97.02	157.42	-154.42	2.52
3,823.00	0.96	24.87	3,812.28	-92.73	157.30	-154.43	0.30
4,108.00	1.23	1.76	4,097.23	-87.51	158.40	-155.69	0.18
4,393.00	1.45	297.47	4,382.16	-82.79	155.30	-152.73	0.50
4,679.00	1.42	306.85	4,668.07	-78.99	149.25	-146.80	0.08
4,962.00	1.17	255.36	4,951.01	-77.62	143.65	-141.24	0.41
5,247.00	1.39	246.72	5,235.94	-79.72	137.66	-135.19	0.10
5,531.00	0.53	246.41	5,519.90	-81.61	133.29	-130.77	0.30
5,815.00	0.92	202.10	5,803.87	-84.25	131.23	-128.62	0.23
□□□□8.00	0.53	230.80	5,856.87	-84.80	130.88	-128.26	0.98
5,956.00	5.63	271.11	5,944.72	-84.97	126.24	-123.62	5.95
6,003.00	10.77	271.70	5,991.22	-84.80	119.55	-116.93	10.94
6,051.00	15.04	271.77	6,038.00	-84.47	108.83	-106.23	8.90
6,098.00	17.36	269.32	6,083.13	-84.36	95.72	-93.13	5.14
6,146.00	19.80	266.43	6,128.62	-84.96	80.45	-77.84	5.43
6,192.00	22.63	268.37	6,171.50	-85.69	63.82	-61.20	6.34
6,240.00	26.16	269.54	6,215.21	-86.04	44.00	-41.38	7.42
6,287.00	29.19	270.20	6,256.83	-86.08	22.18	-19.57	6.48
6,335.00	30.91	270.88	6,298.38	-85.85	-1.86	4.45	3.65
6,382.00	32.76	268.89	6,338.31	-85.91	-26.64	29.23	4.53
6,430.00	36.80	270.03	6,377.72	-86.16	-54.02	56.59	8.52
6,477.00	40.87	271.83	6,414.33	-85.66	-83.48	86.03	8.99
6,525.00	45.47	273.86	6,449.33	-84.01	-116.26	118.75	10.01

Design Report for Wells Ranch AA12-63-1HN - MWD Survey

Measured Depth (ft)	Inclination (°)	Azimuth (°)	Vertical Depth (ft)	+N/-S (ft)	+E/-W (ft)	Vertical Section (ft)	Dogleg Rate (°/100ft)
6,572.00	47.32	271.91	6,481.74	-82.30	-150.25	152.67	4.95
6,620.00	51.38	269.68	6,513.01	-81.82	-186.65	189.04	9.16
6,667.00	56.10	269.51	6,540.80	-82.09	-224.54	226.91	10.05
6,715.00	60.61	269.56	6,565.97	-82.42	-265.39	267.76	9.40
6,762.00	63.18	269.71	6,588.11	-82.68	-306.84	309.20	5.48
6,810.00	68.19	270.19	6,607.87	-82.72	-350.57	352.91	10.48
6,857.00	72.41	268.74	6,623.71	-83.14	-394.81	397.14	9.44
6,905.00	75.87	267.91	6,636.83	-84.49	-440.95	443.30	7.40
6,952.00	79.02	266.95	6,647.04	-86.55	-486.77	489.17	6.99
7,000.00	83.50	267.45	6,654.34	-88.86	-534.15	536.59	9.39
7,044.00	86.32	267.20	6,658.24	-90.91	-577.92	580.40	6.43
7,185.00	91.79	266.64	6,660.56	-98.48	-718.65	721.29	3.90
7,280.00	91.33	266.56	6,657.98	-104.11	-813.44	816.22	0.49
7,375.00	90.49	267.28	6,656.47	-109.22	-908.29	911.18	1.16
7,470.00	90.12	264.74	6,655.96	-115.83	-1,003.05	1,006.09	2.70
7,565.00	90.25	263.32	6,655.66	-125.71	-1,097.53	1,100.83	1.50
7,659.00	89.57	263.84	6,655.80	-136.22	-1,190.94	1,194.52	0.91
7,754.00	90.03	265.82	6,656.14	-144.78	-1,285.55	1,289.34	2.14
7,849.00	89.32	267.95	6,656.67	-149.94	-1,380.40	1,384.30	2.36
7,944.00	89.26	269.09	6,657.85	-152.39	-1,475.36	1,479.29	1.20
8,039.00	89.48	269.17	6,658.90	-153.84	-1,570.35	1,574.28	0.25
8,134.00	89.29	269.53	6,659.92	-154.91	-1,665.34	1,669.25	0.43
8,229.00	88.71	270.27	6,661.57	-155.08	-1,760.32	1,764.20	0.99
8,323.00	87.47	269.83	6,664.71	-155.00	-1,854.27	1,858.10	1.40
8,418.00	89.26	268.15	6,667.42	-156.67	-1,949.20	1,953.05	2.58
8,513.00	89.14	272.35	6,668.74	-156.26	-2,044.17	2,047.96	4.42
8,608.00	88.03	271.64	6,671.09	-152.95	-2,139.08	2,142.73	1.39
8,703.00	89.23	272.84	6,673.36	-149.24	-2,233.98	2,237.47	1.79
8,798.00	93.46	273.58	6,671.13	-143.92	-2,328.78	2,332.07	4.52
8,893.00	92.41	273.45	6,666.27	-138.11	-2,423.48	2,426.55	1.11
8,988.00	92.49	273.06	6,662.21	-132.72	-2,518.24	2,521.10	0.42
9,083.00	91.30	273.04	6,659.07	-127.67	-2,613.05	2,615.72	1.25
9,177.00	90.43	271.68	6,657.65	-123.80	-2,706.96	2,709.46	1.72
9,272.00	90.40	270.05	6,656.96	-122.36	-2,801.94	2,804.36	1.72
9,367.00	90.46	269.51	6,656.25	-122.73	-2,896.94	2,899.32	0.57
9,462.00	88.77	269.87	6,656.88	-123.24	-2,991.93	2,994.29	1.82
9,557.00	87.72	269.15	6,659.79	-124.05	-3,086.88	3,089.22	1.34
9,652.00	89.32	269.62	6,662.25	-125.07	-3,181.84	3,184.17	1.76
9,747.00	90.49	269.21	6,662.40	-126.04	-3,276.83	3,279.14	1.31
9,842.00	90.58	268.67	6,661.52	-127.80	-3,371.81	3,374.13	0.58
9,937.00	90.25	268.26	6,660.83	-130.34	-3,466.78	3,469.13	0.55
10,032.00	91.39	267.94	6,659.47	-133.49	-3,561.71	3,564.12	1.25
10,127.00	90.00	267.84	6,658.32	-136.99	-3,656.64	3,659.11	1.47
10,222.00	89.51	268.26	6,658.72	-140.22	-3,751.58	3,754.11	0.68
10,317.00	88.43	266.60	6,660.43	-144.48	-3,846.47	3,849.07	2.08
10,411.00	87.99	268.24	6,663.37	-148.71	-3,940.32	3,943.02	1.81
10,506.00	87.13	268.73	6,667.41	-151.22	-4,035.20	4,037.93	1.04
10,601.00	90.89	269.56	6,669.05	-152.64	-4,130.16	4,132.88	4.05
10,696.00	92.31	269.61	6,666.40	-153.32	-4,225.12	4,227.82	1.50
10,791.00	91.73	270.85	6,663.05	-152.94	-4,320.05	4,322.70	1.44
10,886.00	90.80	270.95	6,660.95	-151.45	-4,415.02	4,417.58	0.98

Design Report for Wells Ranch AA12-63-1HN - MWD Survey

Measured Depth (ft)	Inclination (°)	Azimuth (°)	Vertical Depth (ft)	+N/-S (ft)	+E/-W (ft)	Vertical Section (ft)	Dogleg Rate (°/100ft)
10,955.00	91.11	270.77	6,659.80	-150.42	-4,484.00	4,486.50	0.52
Final MWD Survey							
11,016.00	91.11	270.77	6,658.62	-149.60	-4,544.98	4,547.43	0.00
Bit Projection - Estimated BHL 978'FSL 536'FWL							

Design Annotations

Measured Depth (ft)	Vertical Depth (ft)	Local Coordinates		Comment
		+N/-S (ft)	+E/-W (ft)	
722.00	722.00	0.00	0.00	Tie On Surface Casing Assumed Vertical
802.00	802.00	0.00	0.00	First MWD Survey
10,955.00	6,659.80	-150.42	-4,484.00	Final MWD Survey
11,016.00	6,658.62	-149.60	-4,544.98	Bit Projection
11,016.00	6,658.62	-149.60	-4,544.98	Estimated BHL 978'FSL 536'FWL

Vertical Section Information

Angle Type	Target	Azimuth (°)	Origin Type	Origin		Start TVD (ft)
				+N/-S (ft)	+E/-W (ft)	
Target	Wells Ranch AA12-63-1HN_PlanA - Rev0_B HL Tgt	268.27	Slot	0.00	0.00	0.00

Survey tool program

From (ft)	To (ft)	Survey/Plan	Survey Tool
722.00	11,016.00	Survey #1	MWD

Design Report for Wells Ranch AA12-63-1HN - MWD Survey

Targets

Target Name - hit/miss target - Shape	Dip Angle (°)	Dip Dir. (°)	TVD (ft)	+N/-S (ft)	+E/-W (ft)	Northing (ft)	Easting (ft)	Latitude	Longitude
Wells Ranch	0.00	0.00	-1.00	76.54	1.81	1,425,875.15	3,312,594.96	40° 29' 49.164 N	104° 22' 33.528 W
- actual wellpath misses target center by 76.57ft at 0.00ft MD (0.00 TVD, 0.00 N, 0.00 E)									
- Polygon									
Point 1				-257.19	-612.46	1,425,186.18	3,312,335.97		
Point 2				-4,591.19	-671.46	1,425,127.18	3,308,002.12		
Point 3				-4,757.19	3,704.54	1,429,503.03	3,307,836.12		
Point 4				-191.19	3,777.54	1,429,576.03	3,312,401.97		
Point 5				-257.19	-612.46	1,425,186.18	3,312,335.97		
Wells Ranch	0.00	0.00	6,661.00	-137.36	-4,545.94	1,425,661.26	3,308,047.37	40° 29' 47.616 N	104° 23' 32.424 W
- actual wellpath misses target center by 12.50ft at 11016.00ft MD (6658.62 TVD, -149.60 N, -4544.98 E)									
- Point									
Wells Ranch	0.00	0.00	-1.00	76.54	1.81	1,425,875.15	3,312,594.96	40° 29' 49.164 N	104° 22' 33.528 W
- actual wellpath misses target center by 76.57ft at 0.00ft MD (0.00 TVD, 0.00 N, 0.00 E)									
- Polygon									
Point 1				202.81	-1,072.46	1,424,726.19	3,312,795.95		
Point 2				-5,051.19	-1,131.46	1,424,667.19	3,307,542.13		
Point 3				-5,217.19	4,164.54	1,429,963.01	3,307,376.14		
Point 4				268.81	4,237.54	1,430,036.01	3,312,861.95		
Point 5				202.81	-1,072.46	1,424,726.19	3,312,795.95		
Wells Ranch	0.00	0.00	5,944.80	-85.00	140.00	1,425,713.62	3,312,733.15	40° 29' 47.551 N	104° 22' 31.766 W
- actual wellpath misses target center by 13.71ft at 5955.36ft MD (5944.08 TVD, -84.97 N, 126.31 E)									
- Circle (radius 30.00)									
Wells Ranch	90.00		6,661.00	-93.00	-576.15	1,425,705.62	3,312,017.02	40° 29' 47.561 N	104° 22' 41.036 W
- actual wellpath misses target center by 3.60ft at 7042.58ft MD (6658.15 TVD, -90.84 N, -576.51 E)									
- Rectangle (sides W60.00 H16.00 D0.00)									

North Reference Sheet for Sec. 12-T6N-R63W (Wells Ranch 12 South PAD) - Wells Ranch AA12-63-1HN

All data is in US Feet unless otherwise stated. Directions and Coordinates are relative to Grid North Reference.

Vertical Depths are relative to KB @ 4881.00ft (H&P 315). Northing and Easting are relative to Wells Ranch AA12-63-1HN

Coordinate System is US State Plane 1983, Colorado Northern Zone using datum North American Datum 1983, ellipsoid GRS 1980

Projection method is Lambert Conformal Conic (2 parallel)

Central Meridian is 105° 30' 0.000 W°, Longitude Origin:0° 0' 0.000 E°, Latitude Origin:40° 47' 0.000 N°

False Easting: 3,000,000.00ft, False Northing: 1,000,000.00ft, Scale Reduction: 0.99996604

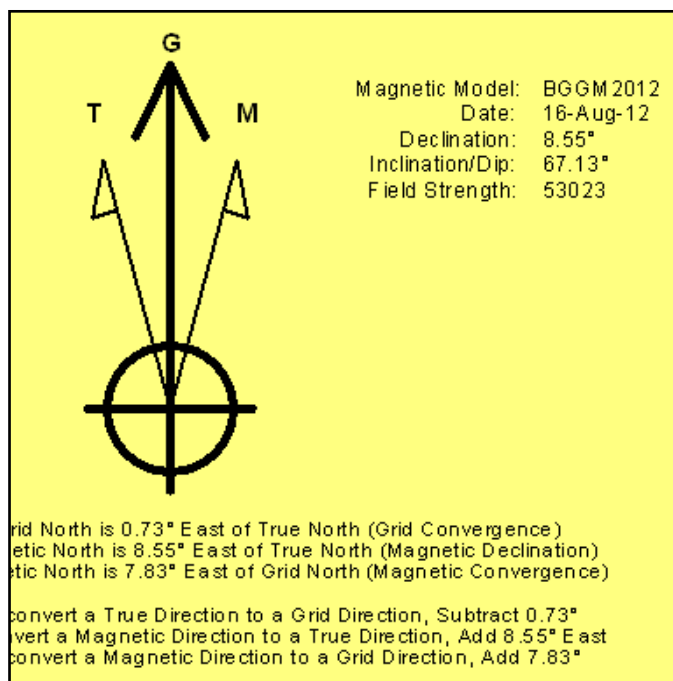
Grid Coordinates of Well: 1,425,798.62 ft N, 3,312,593.15 ft E

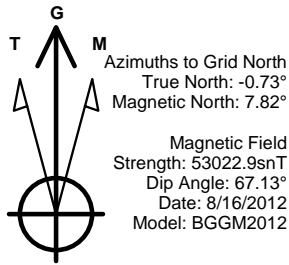
Geographical Coordinates of Well: 40° 29' 48.41" N, 104° 22' 33.56" W

Grid Convergence at Surface is: 0.73°

Based upon Minimum Curvature type calculations, at a Measured Depth of 11,016.00ft the Bottom Hole Displacement is 4,547.45ft in the Direction of 268.11° (Grid).

Magnetic Convergence at surface is: -7.83° (16 August 2012, , BGGM2012)

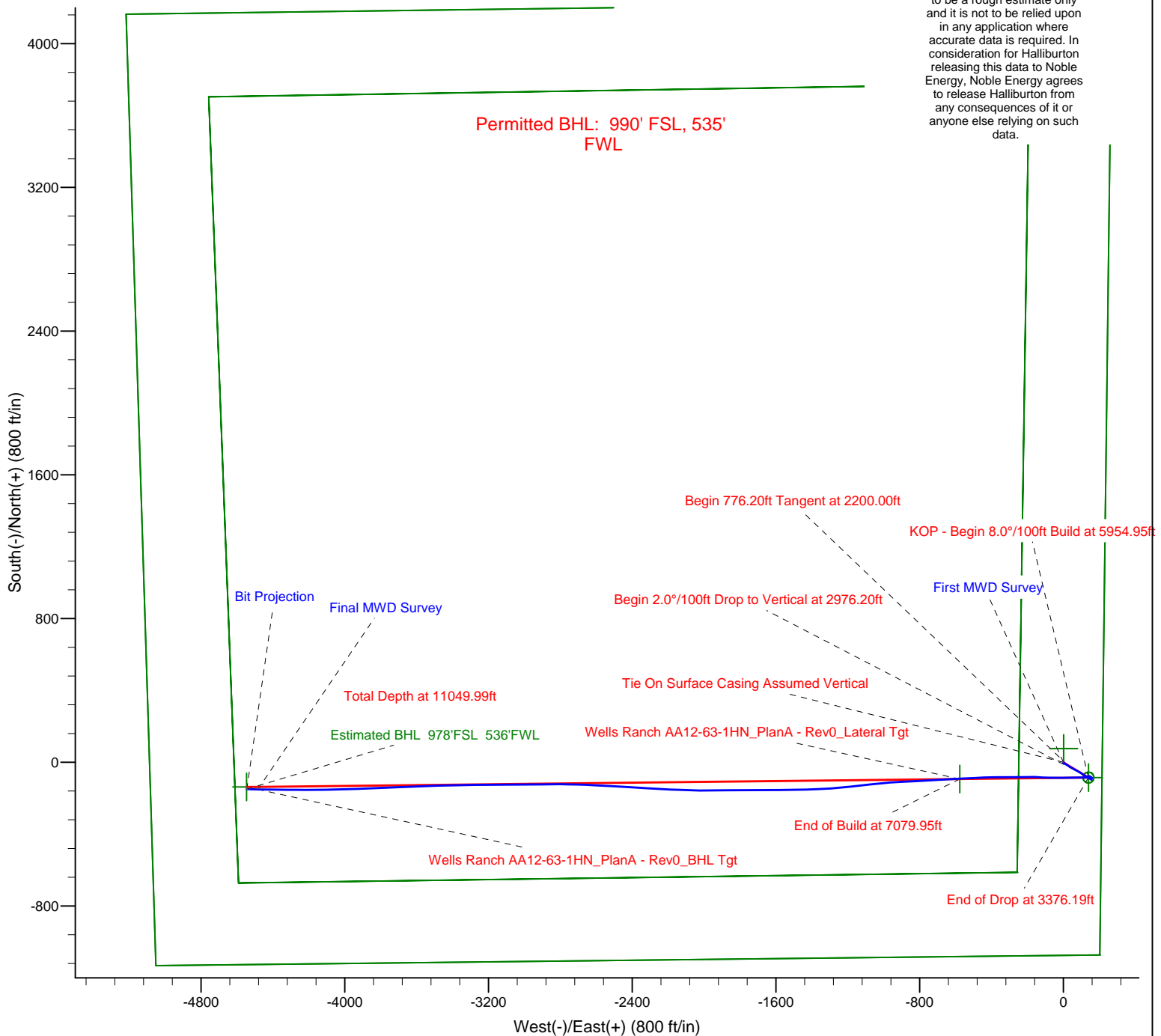




LEGEND

- Wells Ranch AA12-63-1HN, Plan A, Plan A - Rev 0 Proposal V0
- MWD Survey

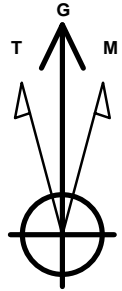
Halliburton Energy Services, Inc. ("Halliburton") recently completed directional drilling and MWD operations at the Wells Ranch AA12-63-1HN well located at Weld County, CO. At the conclusion of the job Halliburton performed a final survey on the well. Noble Energy has requested that Halliburton provide them the distances from BHL to section lines from that final survey to allow Noble Energy to meet its requirements under Colorado law. These distances are generated by a mathematical algorithm based on rough data collected after the well is drilled. Halliburton considers it to be a rough estimate only and it is not to be relied upon in any application where accurate data is required. In consideration for Halliburton releasing this data to Noble Energy, Noble Energy agrees to release Halliburton from any consequences of it or anyone else relying on such data.



Project: Weld County, CO (NAD 83)
Site: Sec. 12-T6N-R63W (Wells Ranch 12 South PAD)
Well: Wells Ranch AA12-63-1HN

Noble Energy

HALLIBURTON
Sperry Drilling



Azimuths to Grid North
True North: -0.73°
Magnetic North: 7.82°

Magnetic Field
Strength: 53022.9snT
Dip Angle: 67.13°
Date: 8/16/2012
Model: BGGM2012

LEGEND

— Wells Ranch AA12-63-1HN, Plan A, Plan A - Rev 0 Proposal V0
— MWD Survey

Halliburton Energy Services, Inc. ("Halliburton") recently completed directional drilling and MWD operations at the Wells Ranch AA12-63-1HN well located at Weld County, CO. At the conclusion of the job Halliburton performed a final survey on the well. Noble Energy has requested that Halliburton provide them the distances from BHL to section lines from that final survey to allow Noble Energy to meet its requirements under Colorado law. These distances are generated by a mathematical algorithm based on rough data collected after the well is drilled. Halliburton considers it to be a rough estimate only and it is not to be relied upon in any application where accurate data is required. In consideration for Halliburton releasing this data to Noble Energy, Noble Energy agrees to release Halliburton from any consequences of it or anyone else relying on such data.

