

1625 Broadway
Suite 2000
Denver, CO 80202

Tel: 303.228.4000
Fax: 303.228.4280
www.nobleenergyinc.com



4/25/13

Colorado Oil and Gas Conservation Commission
The Chancery Building
1120 Lincoln Street, Suite 801
Denver, CO 80203
Attn: Mr. Matt Lepore, Director

RE: Crow Creek State AC36-75-1HN
Niobrara New Drill
Township 7, Range 63 West, 6th P.M.
Section 36: SE/4SE/4: 270' FSL & 1575' FEL (Surface Location)
Section 36: SE/4SE/4: 742' FSL & 2306' FEL (Beginning of Lateral)
Section 36: NE/4NE/4: 535' FNL & 2310' FEL (Bottom Hole Location)
Weld County, Colorado

Dear Director:

Noble Energy, Inc. ("NEI") is planning to drill the captioned boundary well in accordance with the provisions of COGCC Rule 318A.e.

NEI's proposed wellbore spacing unit consists of W/2E/2 and E/2W/2, Sec 36 T7N, R63W, creating a 320-acre wellbore spacing unit for the Niobrara formation. NEI is the only owner within the proposed wellbore spacing unit, therefore NEI hereby attests that no notice letters are required under COGCC Rule 318A(l).e.(6).

Enclosed are copies of the following documents to assist you in your review and approval of NEI's proposed APD for the captioned well:

- Map & plat illustrating proposed wellbore spacing unit.

Thank you for your attention to the enclosed. NEI respectfully requests that the COGCC review the enclosed information and approve the Application for Permit to Drill the captioned well.

Sincerely,

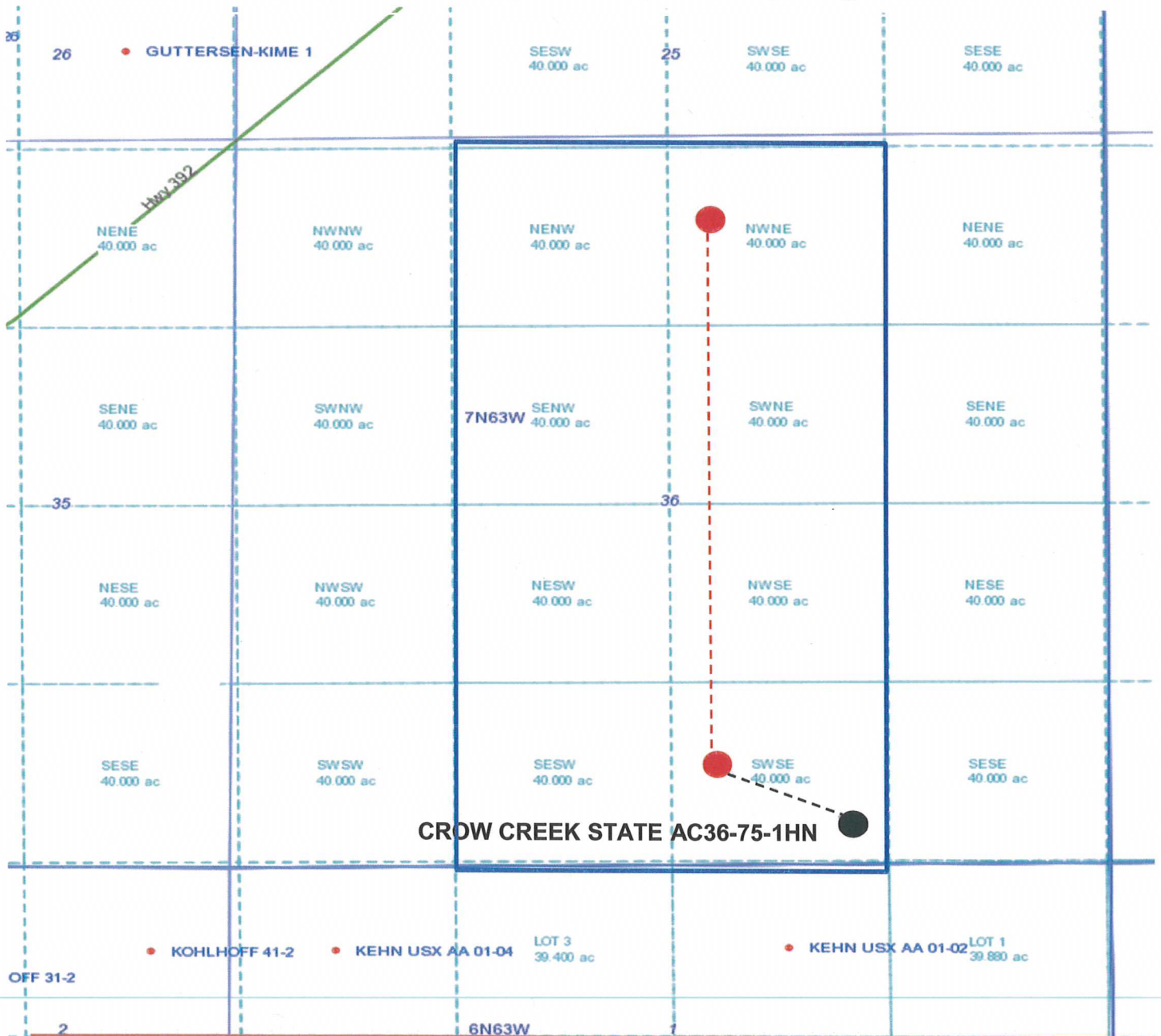
A handwritten signature in blue ink, appearing to read 'Liz Lindow'.

Liz Lindow
Regulatory Analyst
Noble Energy Inc.

Crow Creek State AC36-75-1HN

Proposed Spacing Unit – Noble Energy, Inc

E/2W/2, W/2E/2 Section 36, Township 7 North, Range 63 West



Legend



Proposed 320.00± acre spacing unit



Bottom Hole Location