

T7N, R80W, 6th P.M.

EE3 LLC.

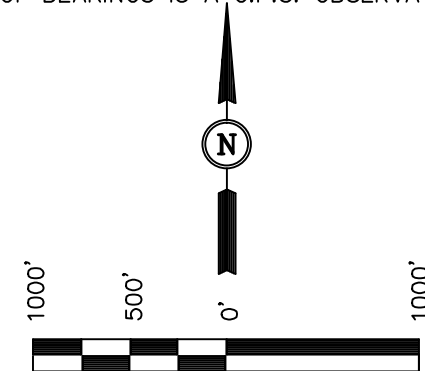
Well location, SPICER #03-32H Pilot Hole,
located as shown in the SW 1/4 SW 1/4 of
Section 32, T7N, R80W, 6th P.M., Jackson
County, Colorado.

BASIS OF ELEVATION

SPOT ELEVATION AT THE SOUTHEAST CORNER OF SECTION
29, T7N, R80W, 6th P.M., TAKEN FROM THE COALMONT
QUADRANGLE, COLORADO, JACKSON COUNTY 7.5 MINUTE
QUAD. (TOPOGRAPHIC MAP) PUBLISHED BY THE UNITED
STATES DEPARTMENT OF THE INTERIOR, GEOLOGICAL SURVEY.
SAID ELEVATION IS MARKED AS BEING 8156 FEET

BASIS OF BEARINGS

BASIS OF BEARINGS IS A G.P.S. OBSERVATION.



SCALE

CERTIFICATE

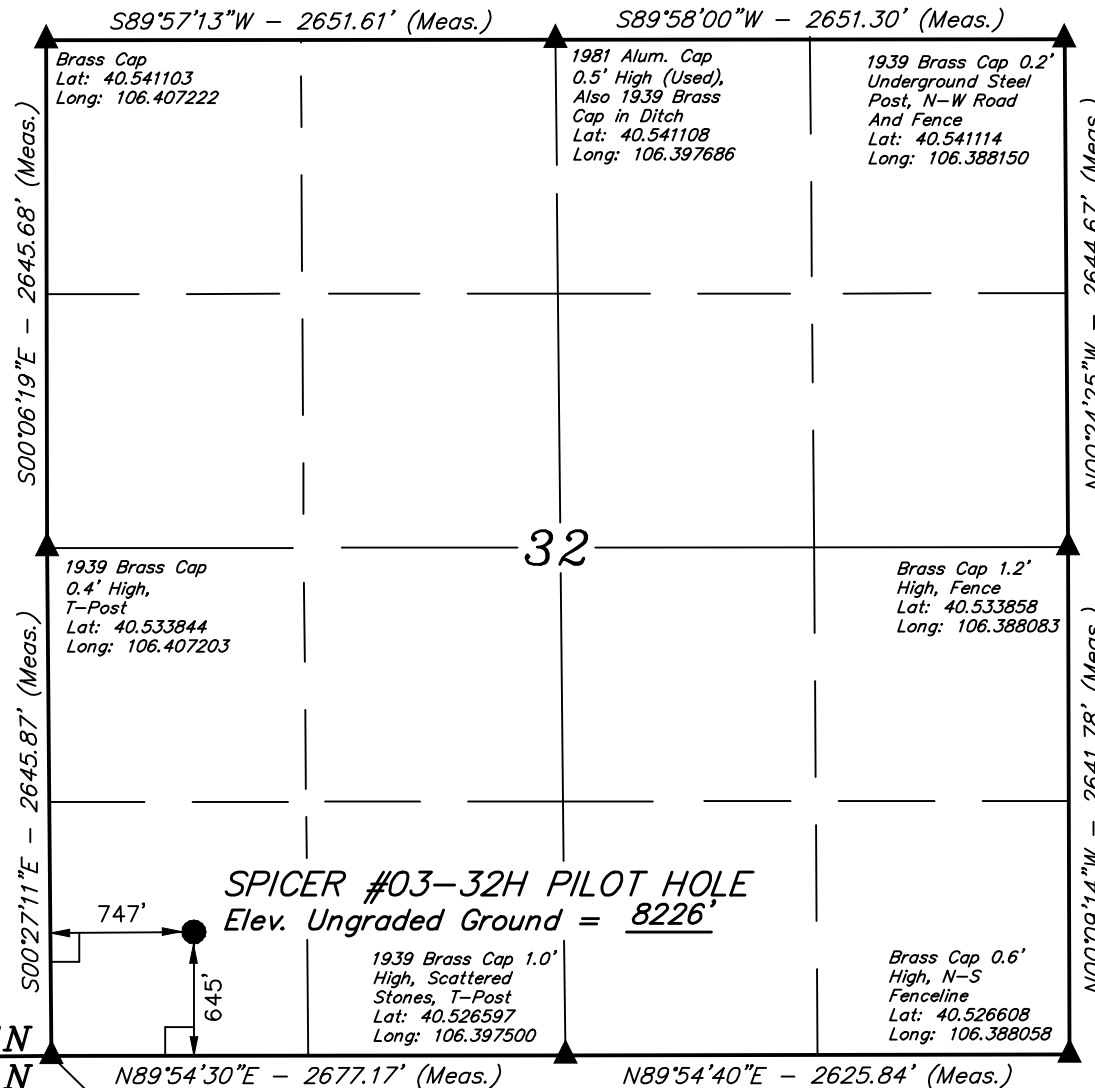
THIS IS TO CERTIFY THAT THE ABOVE PLAT WAS PREPARED FROM
FIELD NOTES OF ACTUAL SURVEYS MADE BY ME OR UNDER MY
SUPERVISION AND THAT THE SAME ARE TRUE AND CORRECT TO THE
BEST OF MY KNOWLEDGE AND BELIEF.

REVISED: 04-04-13 R.L.
REVISED: 07-06-11 J.I.
REVISED: 03-12-08

REGISTERED LAND SURVEYOR
REGISTRATION NO. 17492
STATE OF COLORADO

UINTAH ENGINEERING & LAND SURVEYING
85 SOUTH 200 EAST - VERNAL, UTAH 84078
(435) 789-1017

SCALE 1" = 1000'	DATE SURVEYED: 11-04-07	DATE DRAWN: 11-16-07
PARTY J.F. D.C. L.K.	REFERENCES G.L.O. PLAT	
WEATHER COOL	FILE EE3 LLC.	



T7N
T6N

LEGEND:

- └─┘ = 90° SYMBOL
- = PROPOSED WELL HEAD.
- ▲ = SECTION CORNERS LOCATED.

PDOP = 1.9

NAD 83 (TARGET BOTTOM HOLE)	NAD 83 (SURFACE LOCATION)
LATITUDE = 40°32'21.98" (40.539439)	LATITUDE = 40°31'42.10" (40.528361)
LONGITUDE = 106°23'59.25" (106.399792)	LONGITUDE = 106°24'16.06" (106.404461)
NAD 27 (TARGET BOTTOM HOLE)	NAD 27 (SURFACE LOCATION)
LATITUDE = 40°32'22.05" (40.539458)	LATITUDE = 40°31'42.17" (40.528381)
LONGITUDE = 106°23'57.14" (106.399206)	LONGITUDE = 106°24'13.95" (106.403875)
STATE PLANE NAD 83	STATE PLANE NAD 83
N: 1440627.18 E: 2749918.45	N: 1436604.86 E: 2748579.54
STATE PLANE NAD 27	STATE PLANE NAD 27
N: 440625.02 E: 1750074.84	N: 436602.68 E: 1748735.98