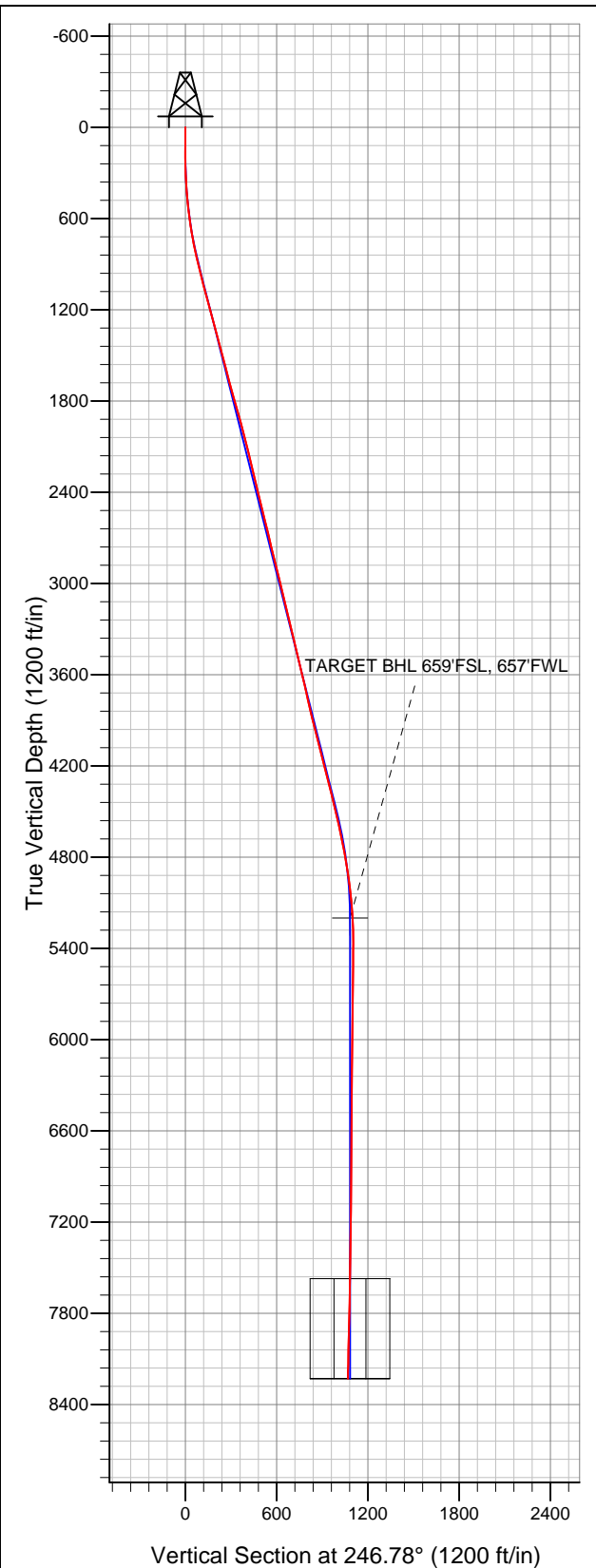


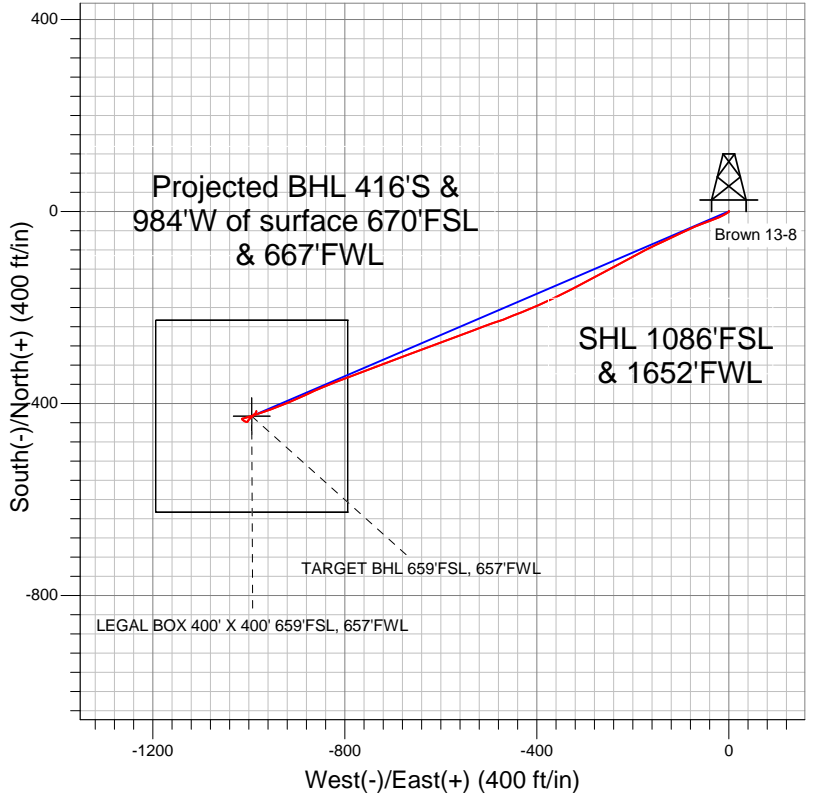
Well Name: Brown 13-8

Surface Location: Brown 13-8 Pad Sec.8-T1S-R67W
North American Datum 1983 US State Plane 1983Colorado Northern Zone
Ground Elevation: 5173.0

+N/-S	+E/-W	Northing	Easting	Latitude	Longitude	Slot
0.0	0.0	1234225.89	3163635.49	39.974855	-104.916119	
		Original Well Elev	WELL @ 5185.0ft (Original Well Elev)			



BAYSWATER EXPLORATION & PRODUCTION



- LEGEND
- Wellbore #1
 - Brown 13-8, Wellbore #1, Plan #2 (12-1-11) V0
 - Survey #1

Final Survey Plot

Projected Final Survey -
8360'MD & 8231'TVD @ 1069'VS
1.30 deg Inc 8.00 deg AZ

Project: SEC.8-T1S-R67W
Site: Brown 13-8 Pad Sec.8-T1S-R67W
Well: Brown 13-8
Plan: Wellbore #1



BAYSWATER EXPLORATION & PRODUCTION

SEC.8-T1S-R67W

Brown 13-8 Pad Sec.8-T1S-R67W

Brown 13-8

Wellbore #1

Survey: Survey #1

Standard Survey Report

11 April, 2012

Company:	BAYSWATER EXPLORATION & PRODUCTION	Local Co-ordinate Reference:	Well Brown 13-8
Project:	SEC.8-T1S-R67W	TVD Reference:	WELL @ 5185.0ft (Original Well Elev)
Site:	Brown 13-8 Pad Sec.8-T1S-R67W	MD Reference:	WELL @ 5185.0ft (Original Well Elev)
Well:	Brown 13-8	North Reference:	True
Wellbore:	Wellbore #1	Survey Calculation Method:	Minimum Curvature
Design:	Wellbore #1	Database:	Landmark

Project	SEC.8-T1S-R67W, Adams County, CO		
Map System:	US State Plane 1983	System Datum:	Mean Sea Level
Geo Datum:	North American Datum 1983		Using Well Reference Point
Map Zone:	Colorado Northern Zone		Using geodetic scale factor

Site	Brown 13-8 Pad Sec.8-T1S-R67W				
Site Position:		Northing:	1,234,225.91 ft	Latitude:	39.974855
From:	Lat/Long	Easting:	3,163,635.49 ft	Longitude:	-104.916119
Position Uncertainty:	0.0 ft	Slot Radius:	"	Grid Convergence:	0.38 °

Well	Brown 13-8					
Well Position	+N-S	0.0 ft	Northing:	1,234,225.89 ft	Latitude:	39.974855
	+E-W	0.0 ft	Easting:	3,163,635.49 ft	Longitude:	-104.916119
Position Uncertainty		0.0 ft	Wellhead Elevation:	ft	Ground Level:	5,173.0 ft

Wellbore	Wellbore #1				
Magnetics	Model Name	Sample Date	Declination (°)	Dip Angle (°)	Field Strength (nT)
	IGRF2010	3/29/2012	8.80	66.65	52,805

Design	Wellbore #1				
Audit Notes:					
Version:	1.0	Phase:	ACTUAL	Tie On Depth:	0.0
Vertical Section:	Depth From (TVD) (ft)	+N/-S (ft)	+E/-W (ft)	Direction (°)	
	5,200.0	0.0	0.0	246.78	

Survey Program	Date	4/11/2012			
From (ft)	To (ft)	Survey (Wellbore)	Tool Name	Description	
68.0	8,360.0	Survey #1 (Wellbore #1)	MWD	MWD - Standard	

Survey									
Measured Depth (ft)	Inclination (°)	Azimuth (°)	Vertical Depth (ft)	+N/-S (ft)	+E/-W (ft)	Vertical Section (ft)	Dogleg Rate (°/100ft)	Build Rate (°/100ft)	Turn Rate (°/100ft)
0.0	0.00	0.00	0.0	0.0	0.0	0.0	0.00	0.00	0.00
68.0	0.90	61.30	68.0	0.3	0.5	-0.5	1.32	1.32	0.00
159.0	0.10	283.70	159.0	0.6	1.0	-1.2	1.07	-0.88	-151.21
248.0	1.50	222.20	248.0	-0.2	0.2	-0.1	1.63	1.57	-69.10
339.0	3.00	231.10	338.9	-2.6	-2.5	3.3	1.69	1.65	9.78
430.0	3.90	241.80	429.7	-5.6	-7.1	8.7	1.21	0.99	11.76
521.0	6.50	244.00	520.4	-9.3	-14.4	16.9	2.87	2.86	2.42
612.0	8.30	248.30	610.6	-14.0	-25.2	28.6	2.07	1.98	4.73
705.0	9.60	248.90	702.5	-19.2	-38.6	43.1	1.40	1.40	0.65
799.0	11.60	248.60	794.9	-25.5	-54.8	60.4	2.13	2.13	-0.32
892.0	13.60	247.30	885.6	-33.1	-73.5	80.7	2.17	2.15	-1.40
986.0	14.60	244.00	976.8	-42.6	-94.4	103.5	1.36	1.06	-3.51

Company:	BAYSWATER EXPLORATION & PRODUCTION	Local Co-ordinate Reference:	Well Brown 13-8
Project:	SEC.8-T1S-R67W	TVD Reference:	WELL @ 5185.0ft (Original Well Elev)
Site:	Brown 13-8 Pad Sec.8-T1S-R67W	MD Reference:	WELL @ 5185.0ft (Original Well Elev)
Well:	Brown 13-8	North Reference:	True
Wellbore:	Wellbore #1	Survey Calculation Method:	Minimum Curvature
Design:	Wellbore #1	Database:	Landmark

Survey									
Measured Depth (ft)	Inclination (°)	Azimuth (°)	Vertical Depth (ft)	+N/-S (ft)	+E/-W (ft)	Vertical Section (ft)	Dogleg Rate (°/100ft)	Build Rate (°/100ft)	Turn Rate (°/100ft)
1,080.0	14.70	244.20	1,067.7	-53.0	-115.8	127.3	0.12	0.11	0.21
1,169.0	14.70	246.00	1,153.8	-62.5	-136.3	149.9	0.51	0.00	2.02
1,237.0	15.10	245.50	1,219.5	-69.7	-152.2	167.3	0.62	0.59	-0.74
1,331.0	14.80	242.00	1,310.3	-80.4	-173.9	191.5	1.01	-0.32	-3.72
1,424.0	15.70	240.90	1,400.1	-92.1	-195.4	215.9	1.02	0.97	-1.18
1,518.0	15.30	241.10	1,490.7	-104.3	-217.4	240.9	0.43	-0.43	0.21
1,612.0	14.50	242.80	1,581.5	-115.6	-238.7	265.0	0.97	-0.85	1.81
1,705.0	14.70	243.10	1,671.5	-126.3	-259.6	288.4	0.23	0.22	0.32
1,799.0	15.30	241.90	1,762.3	-137.5	-281.2	312.6	0.72	0.64	-1.28
1,893.0	16.00	242.30	1,852.8	-149.4	-303.6	337.9	0.75	0.74	0.43
1,986.0	15.40	241.50	1,942.3	-161.3	-325.8	363.0	0.69	-0.65	-0.86
2,080.0	14.20	243.90	2,033.2	-172.3	-347.1	386.9	1.43	-1.28	2.55
2,174.0	14.80	244.50	2,124.2	-182.5	-368.3	410.4	0.66	0.64	0.64
2,268.0	13.30	245.90	2,215.4	-192.1	-389.0	433.2	1.64	-1.60	1.49
2,361.0	12.60	246.90	2,306.0	-200.5	-408.1	454.1	0.79	-0.75	1.08
2,455.0	13.90	248.80	2,397.5	-208.6	-428.1	475.6	1.46	1.38	2.02
2,549.0	14.20	247.60	2,488.7	-217.0	-449.2	498.4	0.44	0.32	-1.28
2,642.0	13.60	249.80	2,579.0	-225.2	-470.1	520.8	0.86	-0.65	2.37
2,736.0	13.80	251.30	2,670.3	-232.6	-491.0	543.0	0.43	0.21	1.60
2,830.0	14.10	249.30	2,761.6	-240.2	-512.4	565.6	0.60	0.32	-2.13
2,923.0	13.10	248.40	2,851.9	-248.1	-532.8	587.4	1.10	-1.08	-0.97
3,017.0	14.00	249.40	2,943.3	-256.0	-553.3	609.4	0.99	0.96	1.06
3,111.0	13.70	250.50	3,034.6	-263.7	-574.5	631.9	0.42	-0.32	1.17
3,205.0	13.10	248.90	3,126.0	-271.3	-594.9	653.7	0.75	-0.64	-1.70
3,298.0	14.10	250.00	3,216.4	-279.0	-615.4	675.5	1.11	1.08	1.18
3,392.0	13.50	249.80	3,307.7	-286.7	-636.4	697.9	0.64	-0.64	-0.21
3,486.0	13.40	250.30	3,399.1	-294.1	-657.0	719.7	0.16	-0.11	0.53
3,579.0	13.20	248.80	3,489.6	-301.6	-677.0	741.1	0.43	-0.22	-1.61
3,673.0	13.80	249.80	3,581.0	-309.3	-697.5	763.0	0.68	0.64	1.06
3,767.0	12.80	248.50	3,672.5	-317.0	-717.8	784.6	1.11	-1.06	-1.38
3,860.0	12.60	249.30	3,763.2	-324.4	-736.8	805.0	0.29	-0.22	0.86
3,954.0	13.10	248.40	3,854.9	-331.9	-756.3	825.9	0.57	0.53	-0.96
4,048.0	14.10	249.10	3,946.3	-339.9	-776.9	848.0	1.08	1.06	0.74
4,141.0	14.70	249.60	4,036.3	-348.1	-798.6	871.1	0.66	0.65	0.54
4,235.0	14.40	249.90	4,127.3	-356.3	-820.7	894.7	0.33	-0.32	0.32
4,329.0	14.20	247.10	4,218.4	-364.8	-842.3	917.9	0.77	-0.21	-2.98
4,422.0	13.50	246.60	4,308.7	-373.5	-862.8	940.2	0.76	-0.75	-0.54
4,516.0	14.00	244.70	4,400.0	-382.7	-883.1	962.5	0.72	0.53	-2.02
4,610.0	14.30	246.10	4,491.2	-392.3	-904.0	985.5	0.48	0.32	1.49
4,703.0	12.70	246.90	4,581.6	-401.0	-923.9	1,007.2	1.73	-1.72	0.86
4,797.0	11.80	250.20	4,673.4	-408.3	-942.5	1,027.1	1.21	-0.96	3.51
4,891.0	10.60	252.10	4,765.7	-414.2	-959.8	1,045.3	1.34	-1.28	2.02
4,985.0	8.70	250.10	4,858.3	-419.3	-974.7	1,061.0	2.05	-2.02	-2.13
5,078.0	7.90	251.00	4,950.3	-423.7	-987.3	1,074.4	0.87	-0.86	0.97
5,172.0	5.90	251.20	5,043.7	-427.4	-998.0	1,085.7	2.13	-2.13	0.21
5,266.0	4.70	254.20	5,137.3	-430.0	-1,006.3	1,094.3	1.31	-1.28	3.19
5,327.8	3.29	258.81	5,198.9	-431.0	-1,010.5	1,098.6	2.33	-2.27	7.45
TARGET BHL 659'FSL, 657'FWL									
5,359.0	2.60	263.00	5,230.1	-431.3	-1,012.1	1,100.1	2.33	-2.23	13.45
5,453.0	0.30	201.80	5,324.0	-431.8	-1,014.3	1,102.3	2.63	-2.45	-65.11
5,547.0	0.70	157.60	5,418.0	-432.6	-1,014.1	1,102.5	0.56	0.43	-47.02
5,640.0	1.10	136.80	5,511.0	-433.7	-1,013.3	1,102.2	0.55	0.43	-22.37
5,734.0	1.20	135.80	5,605.0	-435.1	-1,012.0	1,101.6	0.11	0.11	-1.06

Company:	BAYSWATER EXPLORATION & PRODUCTION	Local Co-ordinate Reference:	Well Brown 13-8
Project:	SEC.8-T1S-R67W	TVD Reference:	WELL @ 5185.0ft (Original Well Elev)
Site:	Brown 13-8 Pad Sec.8-T1S-R67W	MD Reference:	WELL @ 5185.0ft (Original Well Elev)
Well:	Brown 13-8	North Reference:	True
Wellbore:	Wellbore #1	Survey Calculation Method:	Minimum Curvature
Design:	Wellbore #1	Database:	Landmark

Survey									
Measured Depth (ft)	Inclination (°)	Azimuth (°)	Vertical Depth (ft)	+N/-S (ft)	+E/-W (ft)	Vertical Section (ft)	Dogleg Rate (°/100ft)	Build Rate (°/100ft)	Turn Rate (°/100ft)
5,828.0	1.20	121.50	5,699.0	-436.3	-1,010.5	1,100.7	0.32	0.00	-15.21
5,921.0	1.10	110.30	5,792.0	-437.1	-1,008.8	1,099.4	0.26	-0.11	-12.04
6,015.0	1.00	106.10	5,885.9	-437.7	-1,007.2	1,098.2	0.13	-0.11	-4.47
6,109.0	0.80	103.00	5,979.9	-438.0	-1,005.8	1,097.0	0.22	-0.21	-3.30
6,203.0	0.70	106.80	6,073.9	-438.4	-1,004.6	1,096.0	0.12	-0.11	4.04
6,296.0	0.60	81.40	6,166.9	-438.5	-1,003.5	1,095.1	0.32	-0.11	-27.31
6,390.0	0.30	76.30	6,260.9	-438.3	-1,002.8	1,094.4	0.32	-0.32	-5.43
6,484.0	0.40	46.50	6,354.9	-438.0	-1,002.3	1,093.8	0.22	0.11	-31.70
6,577.0	0.50	14.30	6,447.9	-437.4	-1,002.0	1,093.3	0.29	0.11	-34.62
6,671.0	0.70	2.70	6,541.9	-436.4	-1,001.9	1,092.8	0.25	0.21	-12.34
6,765.0	0.80	78.40	6,635.9	-435.7	-1,001.2	1,091.9	0.98	0.11	80.53
6,858.0	0.60	349.90	6,728.9	-435.1	-1,000.6	1,091.2	1.06	-0.22	-95.16
6,952.0	0.40	39.60	6,822.9	-434.4	-1,000.5	1,090.7	0.49	-0.21	52.87
7,046.0	0.40	36.40	6,916.9	-433.9	-1,000.1	1,090.2	0.02	0.00	-3.40
7,139.0	0.60	43.20	7,009.9	-433.3	-999.6	1,089.4	0.22	0.22	7.31
7,233.0	0.70	45.60	7,103.9	-432.5	-998.8	1,088.5	0.11	0.11	2.55
7,327.0	0.60	44.70	7,197.9	-431.8	-998.1	1,087.5	0.11	-0.11	-0.96
7,420.0	0.70	45.40	7,290.9	-431.0	-997.3	1,086.5	0.11	0.11	0.75
7,514.0	0.70	50.20	7,384.9	-430.2	-996.5	1,085.4	0.06	0.00	5.11
7,608.0	0.80	59.90	7,478.8	-429.5	-995.5	1,084.2	0.17	0.11	10.32
7,701.2	1.30	49.06	7,572.0	-428.5	-994.1	1,082.6	0.57	0.53	-11.63
LEGAL BOX 400' X 400' 659'FSL, 657'FWL									
7,702.0	1.30	49.00	7,572.8	-428.5	-994.1	1,082.5	0.57	0.55	-7.12
7,795.0	1.70	45.10	7,665.8	-426.8	-992.3	1,080.2	0.44	0.43	-4.19
7,889.0	1.60	44.60	7,759.8	-424.9	-990.4	1,077.7	0.11	-0.11	-0.53
7,983.0	1.50	45.80	7,853.7	-423.1	-988.6	1,075.4	0.11	-0.11	1.28
8,076.0	1.50	45.80	7,946.7	-421.4	-986.9	1,073.1	0.00	0.00	0.00
8,170.0	1.10	28.40	8,040.7	-419.8	-985.6	1,071.2	0.59	-0.43	-18.51
8,263.0	1.30	18.30	8,133.6	-418.0	-984.8	1,069.8	0.31	0.22	-10.86
8,318.0	1.30	9.20	8,188.6	-416.8	-984.5	1,069.1	0.37	0.00	-16.55
8,360.0	1.30	8.00	8,230.6	-415.8	-984.4	1,068.6	0.06	0.00	-2.86

Checked By: _____	Approved By: _____	Date: _____
-------------------	--------------------	-------------