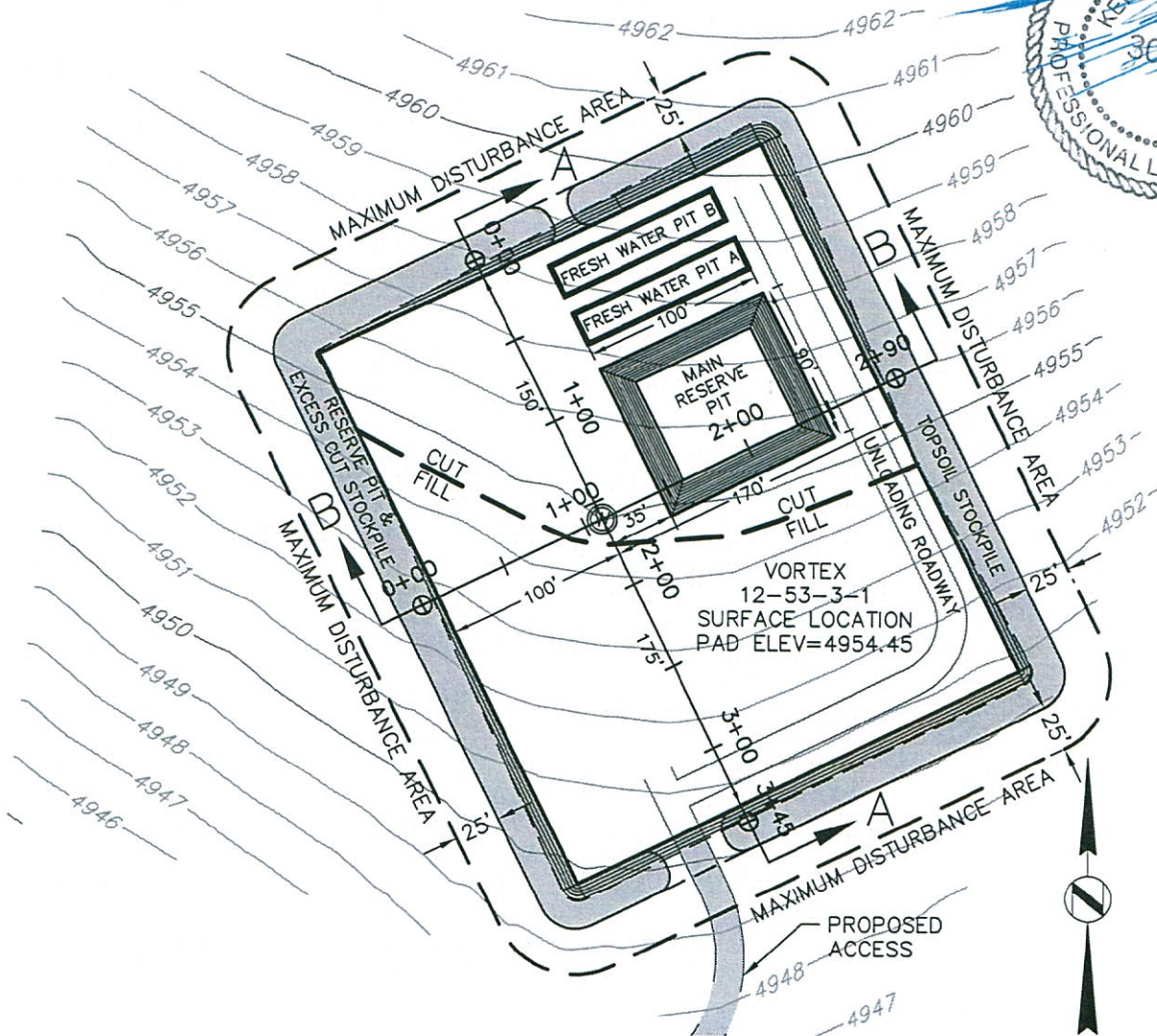


## Site Layout Vortex 12-53-3-1

High Prairie Surveying of Kiowa, Colorado in accordance with a request from Pine Ridge Oil & Gas, LLC has determined the location of Vortex 12-53-3-1 to be 622 feet FNL, and 877 feet FEL, (90° off Section lines) of SECTION 3, Township 12s, Range 53w of the 6th Principal Meridian, Lincoln County, Colorado.

Date: Staked on 04/10/13 drawn on 04/17/13.

Re: Staked by Elijah Frane  
Drawn: Drawn by Dustin Cotter



EARTHWORK VOLUME SUMMARY (CY)

|            | CUT  | FILL | 5% COMPACTION | EXCESS |
|------------|------|------|---------------|--------|
| 6" TOPSOIL | 1625 |      |               |        |
| PAD        | 278  | 265  | 13            | 0      |
| MAIN PIT   | 2390 |      |               |        |
| PIT A      | 523  |      |               |        |
| PIT B      | 523  |      |               |        |
| TOTAL      |      |      |               | 0      |