

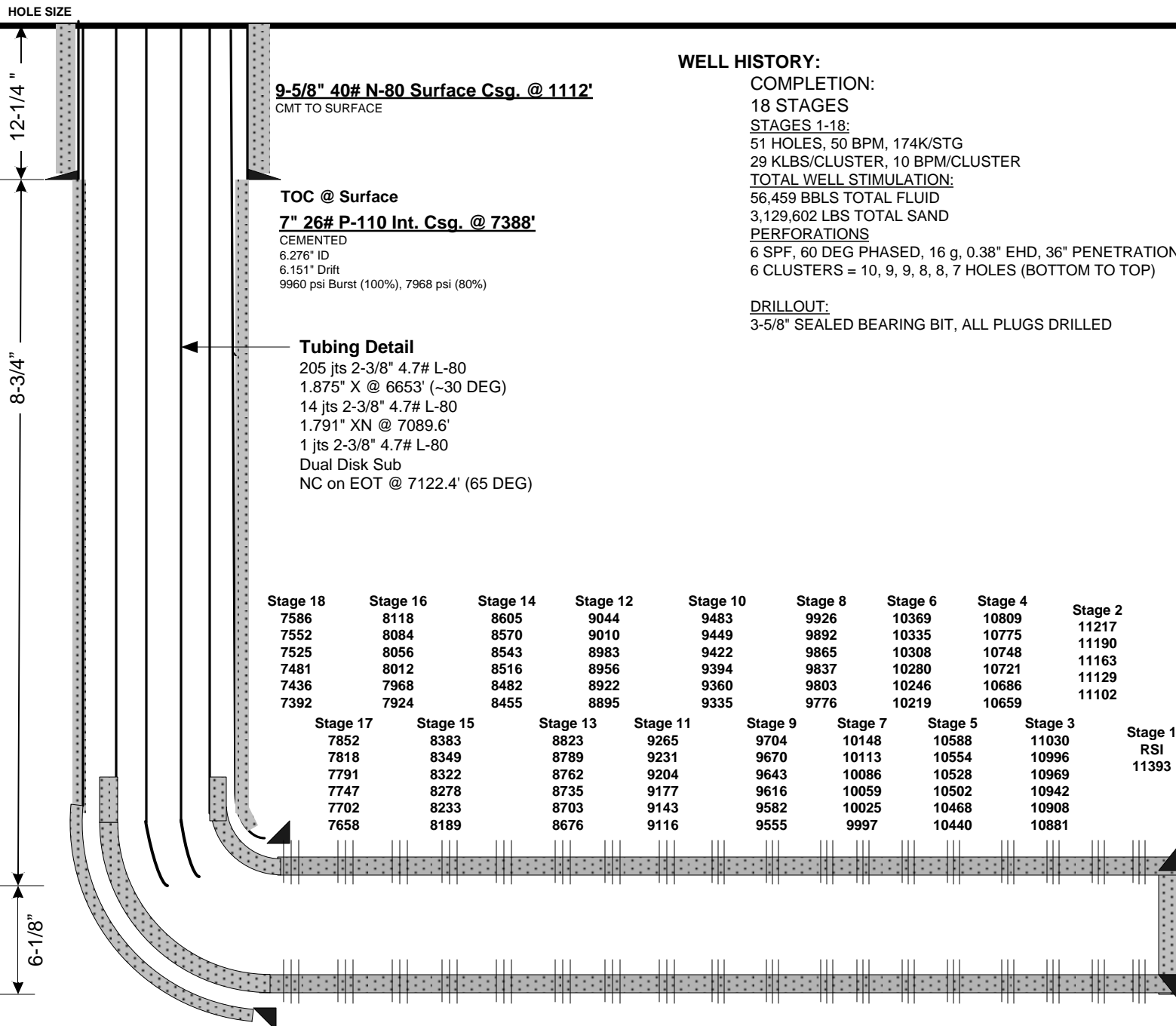
# Current Wellbore Schematic

EnCana Oil & Gas (USA) Inc.



**WELL** : Flanigan 1B-6H – Cemented Perf/Plug  
**LOCATION** : Lat: 40.08697 Long: 104.59172  
**COUNTY** : WELD **STATE**: CO  
**FIELD** : Wattenburg - NIOBRARA  
**ELEVATION** : 4997' (GL) 5010' (KB) Δ 13'

**SPUD DATE:** 8/2/12  
**COMPL. DATE:** 10/09/12  
**API #:** 05123356950000



## Directional Data

KOP: 6350'  
30°: 6700'  
60°: 7050'  
80°: 7300'  
90°: 7400'  
Max DLS: 14°/100' @ 6505' MD

Lateral Length: 4067' (Int. Shoe-TD)

## 4-1/2" 13.5# P-110 DQX Prod. Csg @ 11,441'

CEMENTED  
3.920" ID  
3.795" Drift  
12,410 psi Burst (100%), 9928 psi (80%)

TD: 11,455'  
PBTD (FC): 11,392'  
TVD: ~7000'  
BHT: 240 F