

T8N, R93W, 6th. P.M.

AXIA ENERGY

Set Mound Stones
Lat: 40.652039°
Long: 107.867097°

Set Mound Stones
Lat: 40.652031°
Long: 107.857600°

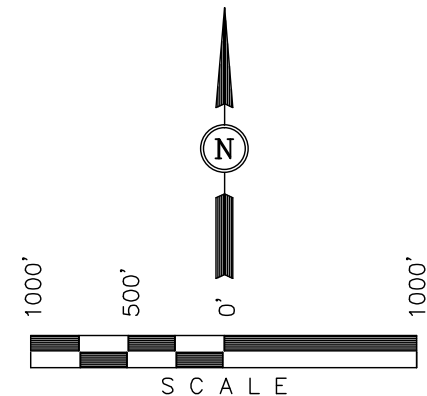
Well location, BULLDOG #17-21H-893 PILOT HOLE,
located as shown in the NW 1/4 NW 1/4 of
Section 17, T8N, R93W, 6th. P.M., Moffat County,
Colorado.

BASIS OF ELEVATION

SPOT ELEVATION LOCATED AT THE NORTHEAST CORNER OF
SECTION 10, T6N, R93W, 6th. P.M., TAKEN FROM THE HORSE
GULCH QUADRANGLE, COLORADO, MOFFAT COUNTY, 7.5
MINUTE QUAD. (TOPOGRAPHIC MAP) PUBLISHED BY THE
UNITED STATES DEPARTMENT OF THE INTERIOR, GEOLOGICAL
SURVEY. SAID ELEVATION IS MARKED AS BEING 6246 FEET.

BASIS OF BEARINGS

BASIS OF BEARINGS IS A G.P.S. OBSERVATION.

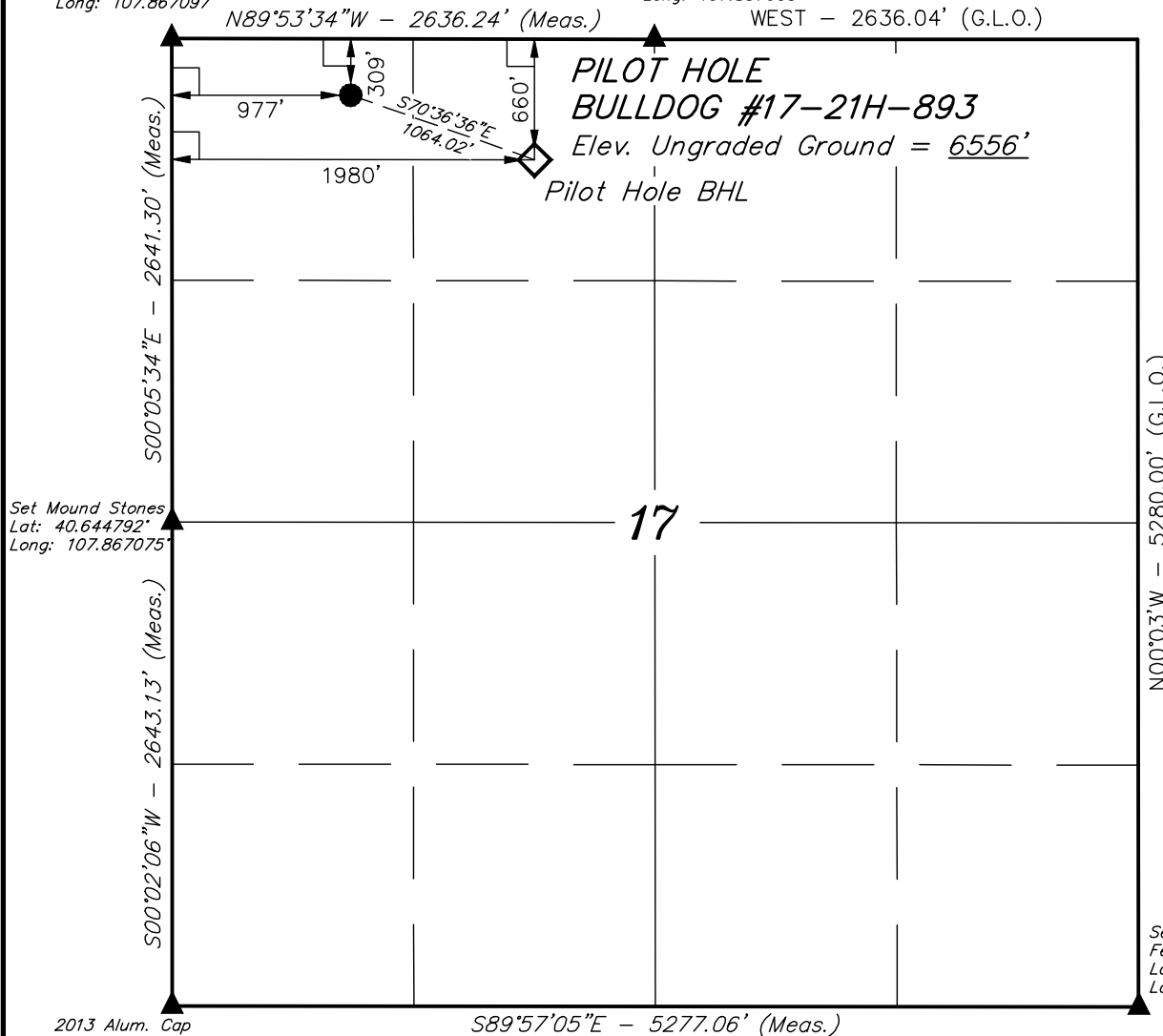


CERTIFICATE

THIS IS TO CERTIFY THAT THE ABOVE PLAT WAS PREPARED FROM
FIELD NOTES OF ACTUAL SURVEYS MADE BY ME OR UNDER MY
SUPERVISION AND THAT THE SAME ARE TRUE AND CORRECT TO THE
BEST OF MY KNOWLEDGE AND BELIEF.

REGISTERED LAND SURVEYOR
REGISTRATION NO. 17492
STATE OF COLORADO
04-15-13

Set Mound Stones
Fence Corner
Lat: 40.637533°
Long: 107.848067°



LEGEND:

- └─┘ = 90° SYMBOL
● = PROPOSED WELL HEAD.
▲ = SECTION CORNERS LOCATED.

PDOP = 1.2

NAD 83 (PILOT HOLE BHL)	NAD 83 (SURFACE LOCATION)
LATITUDE = 40°39'00.79" (40.650219)	LATITUDE = 40°39'04.28" (40.651189)
LONGITUDE = 107°51'35.85" (107.859958)	LONGITUDE = 107°51'48.87" (107.863575)
NAD 27 (PILOT HOLE BHL)	NAD 27 (SURFACE LOCATION)
LATITUDE = 40°39'00.90" (40.650250)	LATITUDE = 40°39'04.39" (40.651219)
LONGITUDE = 107°51'33.57" (107.859325)	LONGITUDE = 107°51'46.60" (107.862944)
STATE PLANE NAD 83	STATE PLANE NAD 83
N: 1488430.75 E: 2345230.48	N: 1488810.34 E: 2344236.52
STATE PLANE NAD 27	STATE PLANE NAD 27
N: 488428.92 E: 1345388.98	N: 488808.79 E: 1344394.67

UINTAH ENGINEERING & LAND SURVEYING
85 SOUTH 200 EAST - VERNAL, UTAH 84078
(435) 789-1017

SCALE 1" = 1000'	DATE SURVEYED: 03-25-13	DATE DRAWN: 04-15-13
PARTY G.M. N.F. A.T.	REFERENCES G.L.O. PLAT	
WEATHER COLD	FILE AXIA ENERGY	