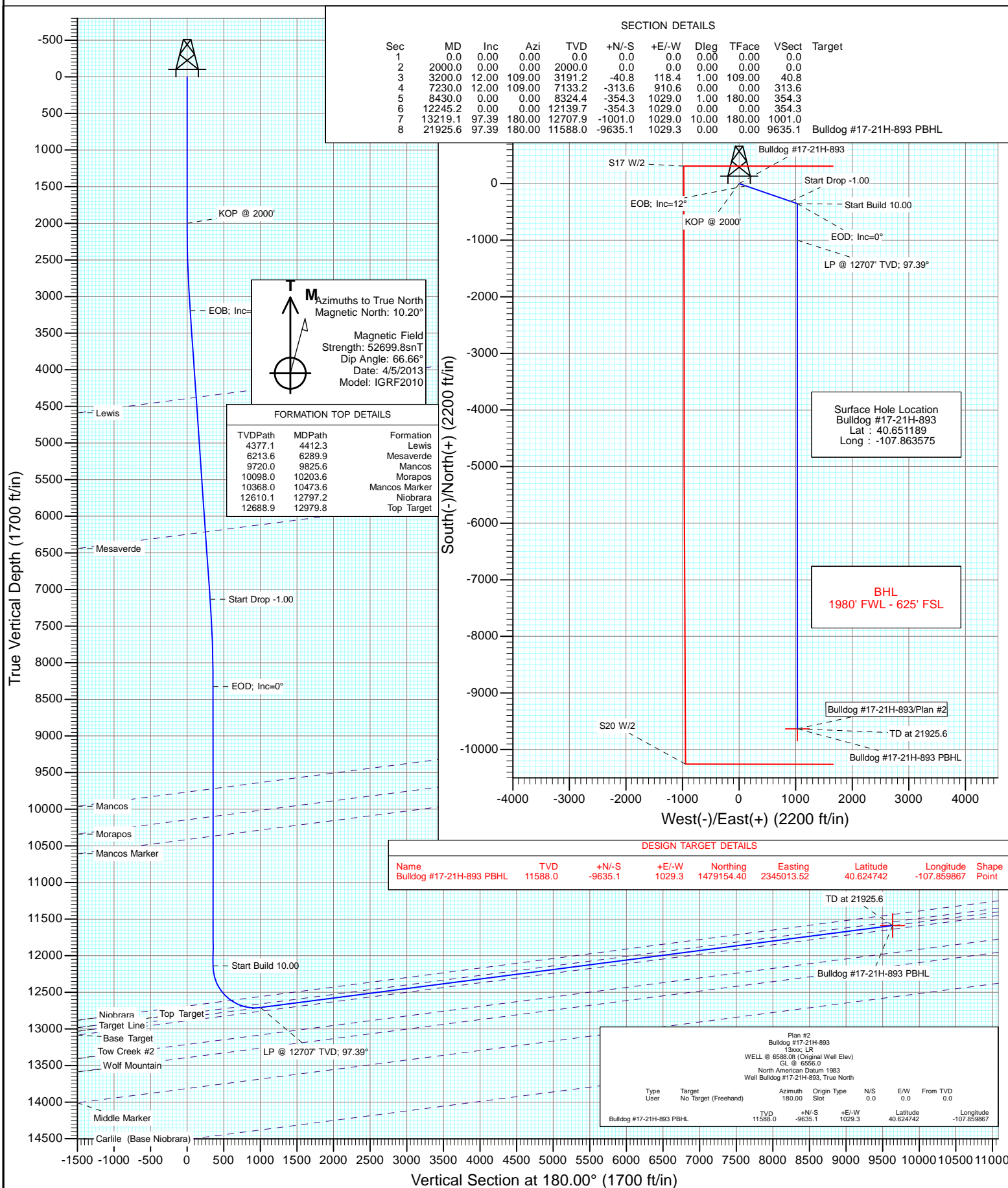




Project: Moffat County, CO  
Site: SEC 17-T8N-R93W  
Well: Bulldog #17-21H-893  
Wellbore: Hz  
Design: Plan #2



## Planning Report

<b>Database:</b>	USA EDM 5000 Multi Users DB	<b>Local Co-ordinate Reference:</b>	Well Bulldog #17-21H-893
<b>Company:</b>	Axia Energy	<b>TVD Reference:</b>	WELL @ 6588.0ft (Original Well Elev)
<b>Project:</b>	Moffat County, CO	<b>MD Reference:</b>	WELL @ 6588.0ft (Original Well Elev)
<b>Site:</b>	SEC 17-T8N-R93W	<b>North Reference:</b>	True
<b>Well:</b>	Bulldog #17-21H-893	<b>Survey Calculation Method:</b>	Minimum Curvature
<b>Wellbore:</b>	Hz		
<b>Design:</b>	Plan #2		

<b>Project</b>	Moffat County, CO		
<b>Map System:</b>	US State Plane 1983	<b>System Datum:</b>	Mean Sea Level
<b>Geo Datum:</b>	North American Datum 1983		
<b>Map Zone:</b>	Colorado Northern Zone		

Site		SEC 17-T8N-R93W			
Site Position:		Northing:	1,488,794.67 ft	Latitude:	40.651136
From:	Lat/Long	Easting:	2,344,225.33 ft	Longitude:	-107.863631
Position Uncertainty:	0.0 ft	Slot Radius:	13.200 in	Grid Convergence:	-1.53 °

Well	Bulldog #17-21H-893					
Well Position	+N/-S	0.0 ft	Northing:	1,488,813.55 ft	Latitude:	40.651189
	+E/-W	0.0 ft	Easting:	2,344,241.38 ft	Longitude:	-107.863575
Position Uncertainty		0.0 ft	Wellhead Elevation:	ft	Ground Level:	6,556.0 ft

<b>Wellbore</b>	Hz				
<b>Magnetics</b>	<b>Model Name</b>	<b>Sample Date</b>	<b>Declination (°)</b>	<b>Dip Angle (°)</b>	<b>Field Strength (nT)</b>
	IGRF2010	4/5/2013	10.20	66.66	52,700

<b>Design</b>	Plan #2			
<b>Audit Notes:</b>				
<b>Version:</b>	<b>Phase:</b>	PLAN	<b>Tie On Depth:</b>	0.0
<b>Vertical Section:</b>	<b>Depth From (TVD) (ft)</b>	<b>+N/-S (ft)</b>	<b>+E/-W (ft)</b>	<b>Direction (°)</b>
	0.0	0.0	0.0	180.00

<b>Plan Sections</b>										
Measured Depth (ft)	Inclination (°)	Azimuth (°)	Vertical Depth (ft)	+N/-S (ft)	+E/-W (ft)	Dogleg Rate (°/100ft)	Build Rate (°/100ft)	Turn Rate (°/100ft)	TFO (°)	Target
0.0	0.00	0.00	0.0	0.0	0.0	0.00	0.00	0.00	0.00	
2,000.0	0.00	0.00	2,000.0	0.0	0.0	0.00	0.00	0.00	0.00	
3,200.0	12.00	109.00	3,191.2	-40.8	118.4	1.00	1.00	0.00	109.00	
7,230.0	12.00	109.00	7,133.2	-313.6	910.6	0.00	0.00	0.00	0.00	
8,430.0	0.00	0.00	8,324.4	-354.3	1,029.0	1.00	-1.00	0.00	180.00	
12,245.2	0.00	0.00	12,139.7	-354.3	1,029.0	0.00	0.00	0.00	0.00	
13,219.1	97.39	180.00	12,707.9	-1,001.0	1,029.0	10.00	10.00	0.00	180.00	
21,925.6	97.39	180.00	11,588.0	-9,635.1	1,029.3	0.00	0.00	0.00	0.00	Bulldog #17-21H-893

# Planning Report

<b>Database:</b>	USA EDM 5000 Multi Users DB	<b>Local Co-ordinate Reference:</b>	Well Bulldog #17-21H-893
<b>Company:</b>	Axia Energy	<b>TVD Reference:</b>	WELL @ 6588.0ft (Original Well Elev)
<b>Project:</b>	Moffat County, CO	<b>MD Reference:</b>	WELL @ 6588.0ft (Original Well Elev)
<b>Site:</b>	SEC 17-T8N-R93W	<b>North Reference:</b>	True
<b>Well:</b>	Bulldog #17-21H-893	<b>Survey Calculation Method:</b>	Minimum Curvature
<b>Wellbore:</b>	Hz		
<b>Design:</b>	Plan #2		

Planned Survey									
Measured Depth (ft)	Inclination (°)	Azimuth (°)	Vertical Depth (ft)	+N/-S (ft)	+E/-W (ft)	Vertical Section (ft)	Dogleg Rate (°/100ft)	Build Rate (°/100ft)	Comments / Formations
0.0	0.00	0.00	0.0	0.0	0.0	0.0	0.00	0.00	
100.0	0.00	0.00	100.0	0.0	0.0	0.0	0.00	0.00	
200.0	0.00	0.00	200.0	0.0	0.0	0.0	0.00	0.00	
300.0	0.00	0.00	300.0	0.0	0.0	0.0	0.00	0.00	
400.0	0.00	0.00	400.0	0.0	0.0	0.0	0.00	0.00	
500.0	0.00	0.00	500.0	0.0	0.0	0.0	0.00	0.00	
600.0	0.00	0.00	600.0	0.0	0.0	0.0	0.00	0.00	
700.0	0.00	0.00	700.0	0.0	0.0	0.0	0.00	0.00	
800.0	0.00	0.00	800.0	0.0	0.0	0.0	0.00	0.00	
900.0	0.00	0.00	900.0	0.0	0.0	0.0	0.00	0.00	
1,000.0	0.00	0.00	1,000.0	0.0	0.0	0.0	0.00	0.00	
1,100.0	0.00	0.00	1,100.0	0.0	0.0	0.0	0.00	0.00	
1,200.0	0.00	0.00	1,200.0	0.0	0.0	0.0	0.00	0.00	
1,300.0	0.00	0.00	1,300.0	0.0	0.0	0.0	0.00	0.00	
1,400.0	0.00	0.00	1,400.0	0.0	0.0	0.0	0.00	0.00	
1,500.0	0.00	0.00	1,500.0	0.0	0.0	0.0	0.00	0.00	
1,600.0	0.00	0.00	1,600.0	0.0	0.0	0.0	0.00	0.00	
1,700.0	0.00	0.00	1,700.0	0.0	0.0	0.0	0.00	0.00	
1,800.0	0.00	0.00	1,800.0	0.0	0.0	0.0	0.00	0.00	
1,900.0	0.00	0.00	1,900.0	0.0	0.0	0.0	0.00	0.00	
2,000.0	0.00	0.00	2,000.0	0.0	0.0	0.0	0.00	0.00	KOP @ 2000'
2,100.0	1.00	109.00	2,100.0	-0.3	0.8	0.3	1.00	1.00	
2,200.0	2.00	109.00	2,200.0	-1.1	3.3	1.1	1.00	1.00	
2,300.0	3.00	109.00	2,299.9	-2.6	7.4	2.6	1.00	1.00	
2,400.0	4.00	109.00	2,399.7	-4.5	13.2	4.5	1.00	1.00	
2,500.0	5.00	109.00	2,499.4	-7.1	20.6	7.1	1.00	1.00	
2,600.0	6.00	109.00	2,598.9	-10.2	29.7	10.2	1.00	1.00	
2,700.0	7.00	109.00	2,698.3	-13.9	40.4	13.9	1.00	1.00	
2,800.0	8.00	109.00	2,797.4	-18.2	52.7	18.2	1.00	1.00	
2,900.0	9.00	109.00	2,896.3	-23.0	66.7	23.0	1.00	1.00	
3,000.0	10.00	109.00	2,994.9	-28.3	82.3	28.3	1.00	1.00	
3,100.0	11.00	109.00	3,093.3	-34.3	99.5	34.3	1.00	1.00	
3,200.0	12.00	109.00	3,191.2	-40.8	118.4	40.8	1.00	1.00	EOB; Inc=12°
3,300.0	12.00	109.00	3,289.1	-47.5	138.0	47.5	0.00	0.00	
3,400.0	12.00	109.00	3,386.9	-54.3	157.7	54.3	0.00	0.00	
3,500.0	12.00	109.00	3,484.7	-61.1	177.4	61.1	0.00	0.00	
3,600.0	12.00	109.00	3,582.5	-67.8	197.0	67.8	0.00	0.00	
3,700.0	12.00	109.00	3,680.3	-74.6	216.7	74.6	0.00	0.00	
3,800.0	12.00	109.00	3,778.1	-81.4	236.3	81.4	0.00	0.00	
3,900.0	12.00	109.00	3,875.9	-88.1	256.0	88.1	0.00	0.00	
4,000.0	12.00	109.00	3,973.8	-94.9	275.7	94.9	0.00	0.00	
4,100.0	12.00	109.00	4,071.6	-101.7	295.3	101.7	0.00	0.00	
4,200.0	12.00	109.00	4,169.4	-108.5	315.0	108.5	0.00	0.00	
4,300.0	12.00	109.00	4,267.2	-115.2	334.6	115.2	0.00	0.00	
4,400.0	12.00	109.00	4,365.0	-122.0	354.3	122.0	0.00	0.00	
4,412.3	12.00	109.00	4,377.1	-122.8	356.7	122.8	0.00	0.00	Lewis
4,500.0	12.00	109.00	4,462.8	-128.8	373.9	128.8	0.00	0.00	
4,600.0	12.00	109.00	4,560.7	-135.5	393.6	135.5	0.00	0.00	
4,700.0	12.00	109.00	4,658.5	-142.3	413.3	142.3	0.00	0.00	
4,800.0	12.00	109.00	4,756.3	-149.1	432.9	149.1	0.00	0.00	
4,900.0	12.00	109.00	4,854.1	-155.8	452.6	155.8	0.00	0.00	
5,000.0	12.00	109.00	4,951.9	-162.6	472.2	162.6	0.00	0.00	

# Planning Report

<b>Database:</b>	USA EDM 5000 Multi Users DB	<b>Local Co-ordinate Reference:</b>	Well Bulldog #17-21H-893
<b>Company:</b>	Axia Energy	<b>TVD Reference:</b>	WELL @ 6588.0ft (Original Well Elev)
<b>Project:</b>	Moffat County, CO	<b>MD Reference:</b>	WELL @ 6588.0ft (Original Well Elev)
<b>Site:</b>	SEC 17-T8N-R93W	<b>North Reference:</b>	True
<b>Well:</b>	Bulldog #17-21H-893	<b>Survey Calculation Method:</b>	Minimum Curvature
<b>Wellbore:</b>	Hz		
<b>Design:</b>	Plan #2		

Planned Survey									
Measured Depth (ft)	Inclination (°)	Azimuth (°)	Vertical Depth (ft)	+N/-S (ft)	+E/-W (ft)	Vertical Section (ft)	Dogleg Rate (°/100ft)	Build Rate (°/100ft)	Comments / Formations
5,100.0	12.00	109.00	5,049.7	-169.4	491.9	169.4	0.00	0.00	
5,200.0	12.00	109.00	5,147.5	-176.1	511.6	176.1	0.00	0.00	
5,300.0	12.00	109.00	5,245.4	-182.9	531.2	182.9	0.00	0.00	
5,400.0	12.00	109.00	5,343.2	-189.7	550.9	189.7	0.00	0.00	
5,500.0	12.00	109.00	5,441.0	-196.4	570.5	196.4	0.00	0.00	
5,600.0	12.00	109.00	5,538.8	-203.2	590.2	203.2	0.00	0.00	
5,700.0	12.00	109.00	5,636.6	-210.0	609.8	210.0	0.00	0.00	
5,800.0	12.00	109.00	5,734.4	-216.8	629.5	216.8	0.00	0.00	
5,900.0	12.00	109.00	5,832.2	-223.5	649.2	223.5	0.00	0.00	
6,000.0	12.00	109.00	5,930.1	-230.3	668.8	230.3	0.00	0.00	
6,100.0	12.00	109.00	6,027.9	-237.1	688.5	237.1	0.00	0.00	
6,200.0	12.00	109.00	6,125.7	-243.8	708.1	243.8	0.00	0.00	
6,289.9	12.00	109.00	6,213.6	-249.9	725.8	249.9	0.00	0.00	Mesaverde
6,300.0	12.00	109.00	6,223.5	-250.6	727.8	250.6	0.00	0.00	
6,400.0	12.00	109.00	6,321.3	-257.4	747.5	257.4	0.00	0.00	
6,500.0	12.00	109.00	6,419.1	-264.1	767.1	264.1	0.00	0.00	
6,600.0	12.00	109.00	6,516.9	-270.9	786.8	270.9	0.00	0.00	
6,700.0	12.00	109.00	6,614.8	-277.7	806.4	277.7	0.00	0.00	
6,800.0	12.00	109.00	6,712.6	-284.4	826.1	284.4	0.00	0.00	
6,900.0	12.00	109.00	6,810.4	-291.2	845.7	291.2	0.00	0.00	
7,000.0	12.00	109.00	6,908.2	-298.0	865.4	298.0	0.00	0.00	
7,100.0	12.00	109.00	7,006.0	-304.8	885.1	304.8	0.00	0.00	
7,200.0	12.00	109.00	7,103.8	-311.5	904.7	311.5	0.00	0.00	
7,230.0	12.00	109.00	7,133.2	-313.6	910.6	313.6	0.00	0.00	Start Drop -1.00
7,300.0	11.30	109.00	7,201.7	-318.2	924.0	318.2	1.00	-1.00	
7,400.0	10.30	109.00	7,300.0	-324.3	941.7	324.3	1.00	-1.00	
7,500.0	9.30	109.00	7,398.5	-329.8	957.8	329.8	1.00	-1.00	
7,600.0	8.30	109.00	7,497.3	-334.8	972.3	334.8	1.00	-1.00	
7,700.0	7.30	109.00	7,596.4	-339.2	985.1	339.2	1.00	-1.00	
7,800.0	6.30	109.00	7,695.7	-343.0	996.3	343.0	1.00	-1.00	
7,900.0	5.30	109.00	7,795.2	-346.3	1,005.8	346.3	1.00	-1.00	
8,000.0	4.30	109.00	7,894.8	-349.1	1,013.8	349.1	1.00	-1.00	
8,100.0	3.30	109.00	7,994.6	-351.2	1,020.0	351.2	1.00	-1.00	
8,200.0	2.30	109.00	8,094.5	-352.8	1,024.6	352.8	1.00	-1.00	
8,300.0	1.30	109.00	8,194.4	-353.8	1,027.6	353.8	1.00	-1.00	
8,400.0	0.30	109.00	8,294.4	-354.3	1,028.9	354.3	1.00	-1.00	
8,430.0	0.00	0.00	8,324.4	-354.3	1,029.0	354.3	1.00	-1.00	EOD; Inc=0°
8,500.0	0.00	0.00	8,394.4	-354.3	1,029.0	354.3	0.00	0.00	
8,600.0	0.00	0.00	8,494.4	-354.3	1,029.0	354.3	0.00	0.00	
8,700.0	0.00	0.00	8,594.4	-354.3	1,029.0	354.3	0.00	0.00	
8,800.0	0.00	0.00	8,694.4	-354.3	1,029.0	354.3	0.00	0.00	
8,900.0	0.00	0.00	8,794.4	-354.3	1,029.0	354.3	0.00	0.00	
9,000.0	0.00	0.00	8,894.4	-354.3	1,029.0	354.3	0.00	0.00	
9,100.0	0.00	0.00	8,994.4	-354.3	1,029.0	354.3	0.00	0.00	
9,200.0	0.00	0.00	9,094.4	-354.3	1,029.0	354.3	0.00	0.00	
9,300.0	0.00	0.00	9,194.4	-354.3	1,029.0	354.3	0.00	0.00	
9,400.0	0.00	0.00	9,294.4	-354.3	1,029.0	354.3	0.00	0.00	
9,500.0	0.00	0.00	9,394.4	-354.3	1,029.0	354.3	0.00	0.00	
9,600.0	0.00	0.00	9,494.4	-354.3	1,029.0	354.3	0.00	0.00	
9,700.0	0.00	0.00	9,594.4	-354.3	1,029.0	354.3	0.00	0.00	
9,800.0	0.00	0.00	9,694.4	-354.3	1,029.0	354.3	0.00	0.00	
9,825.6	0.00	0.00	9,720.0	-354.3	1,029.0	354.3	0.00	0.00	Mancos

# Planning Report

<b>Database:</b>	USA EDM 5000 Multi Users DB	<b>Local Co-ordinate Reference:</b>	Well Bulldog #17-21H-893
<b>Company:</b>	Axia Energy	<b>TVD Reference:</b>	WELL @ 6588.0ft (Original Well Elev)
<b>Project:</b>	Moffat County, CO	<b>MD Reference:</b>	WELL @ 6588.0ft (Original Well Elev)
<b>Site:</b>	SEC 17-T8N-R93W	<b>North Reference:</b>	True
<b>Well:</b>	Bulldog #17-21H-893	<b>Survey Calculation Method:</b>	Minimum Curvature
<b>Wellbore:</b>	Hz		
<b>Design:</b>	Plan #2		

Planned Survey									
Measured Depth (ft)	Inclination (°)	Azimuth (°)	Vertical Depth (ft)	+N/-S (ft)	+E/-W (ft)	Vertical Section (ft)	Dogleg Rate (°/100ft)	Build Rate (°/100ft)	Comments / Formations
9,900.0	0.00	0.00	9,794.4	-354.3	1,029.0	354.3	0.00	0.00	
10,000.0	0.00	0.00	9,894.4	-354.3	1,029.0	354.3	0.00	0.00	
10,100.0	0.00	0.00	9,994.4	-354.3	1,029.0	354.3	0.00	0.00	
10,200.0	0.00	0.00	10,094.4	-354.3	1,029.0	354.3	0.00	0.00	
10,203.6	0.00	0.00	10,098.0	-354.3	1,029.0	354.3	0.00	0.00	Morapos
10,300.0	0.00	0.00	10,194.4	-354.3	1,029.0	354.3	0.00	0.00	
10,400.0	0.00	0.00	10,294.4	-354.3	1,029.0	354.3	0.00	0.00	
10,473.6	0.00	0.00	10,368.0	-354.3	1,029.0	354.3	0.00	0.00	Mancos Marker
10,500.0	0.00	0.00	10,394.4	-354.3	1,029.0	354.3	0.00	0.00	
10,600.0	0.00	0.00	10,494.4	-354.3	1,029.0	354.3	0.00	0.00	
10,700.0	0.00	0.00	10,594.4	-354.3	1,029.0	354.3	0.00	0.00	
10,800.0	0.00	0.00	10,694.4	-354.3	1,029.0	354.3	0.00	0.00	
10,900.0	0.00	0.00	10,794.4	-354.3	1,029.0	354.3	0.00	0.00	
11,000.0	0.00	0.00	10,894.4	-354.3	1,029.0	354.3	0.00	0.00	
11,100.0	0.00	0.00	10,994.4	-354.3	1,029.0	354.3	0.00	0.00	
11,200.0	0.00	0.00	11,094.4	-354.3	1,029.0	354.3	0.00	0.00	
11,300.0	0.00	0.00	11,194.4	-354.3	1,029.0	354.3	0.00	0.00	
11,400.0	0.00	0.00	11,294.4	-354.3	1,029.0	354.3	0.00	0.00	
11,500.0	0.00	0.00	11,394.4	-354.3	1,029.0	354.3	0.00	0.00	
11,600.0	0.00	0.00	11,494.4	-354.3	1,029.0	354.3	0.00	0.00	
11,700.0	0.00	0.00	11,594.4	-354.3	1,029.0	354.3	0.00	0.00	
11,800.0	0.00	0.00	11,694.4	-354.3	1,029.0	354.3	0.00	0.00	
11,900.0	0.00	0.00	11,794.4	-354.3	1,029.0	354.3	0.00	0.00	
12,000.0	0.00	0.00	11,894.4	-354.3	1,029.0	354.3	0.00	0.00	
12,100.0	0.00	0.00	11,994.4	-354.3	1,029.0	354.3	0.00	0.00	
12,200.0	0.00	0.00	12,094.4	-354.3	1,029.0	354.3	0.00	0.00	
12,245.2	0.00	0.00	12,139.7	-354.3	1,029.0	354.3	0.00	0.00	Start Build 10.00
12,300.0	5.48	180.00	12,194.3	-356.9	1,029.0	356.9	10.00	10.00	
12,400.0	15.48	180.00	12,292.6	-375.1	1,029.0	375.1	10.00	10.00	
12,500.0	25.48	180.00	12,386.1	-410.0	1,029.0	410.0	10.00	10.00	
12,600.0	35.48	180.00	12,472.2	-460.7	1,029.0	460.7	10.00	10.00	
12,700.0	45.48	180.00	12,548.2	-525.5	1,029.0	525.5	10.00	10.00	
12,797.2	55.20	180.00	12,610.1	-600.3	1,029.0	600.3	10.00	10.00	Niobrara
12,800.0	55.48	180.00	12,611.7	-602.6	1,029.0	602.6	10.00	10.00	
12,900.0	65.48	180.00	12,660.9	-689.5	1,029.0	689.5	10.00	10.00	
12,979.8	73.46	180.00	12,688.9	-764.1	1,029.0	764.1	10.00	10.00	Top Target
13,000.0	75.48	180.00	12,694.3	-783.6	1,029.0	783.6	10.00	10.00	
13,100.0	85.48	180.00	12,710.8	-882.1	1,029.0	882.1	10.00	10.00	
13,200.0	95.48	180.00	12,710.0	-982.0	1,029.0	982.0	10.00	10.00	
13,219.1	97.39	180.00	12,707.9	-1,001.0	1,029.0	1,001.0	10.00	10.00	LP @ 12707' TVD; 97.39°
13,300.0	97.39	180.00	12,697.4	-1,081.2	1,029.0	1,081.2	0.00	0.00	
13,400.0	97.39	180.00	12,684.6	-1,180.3	1,029.0	1,180.3	0.00	0.00	
13,500.0	97.39	180.00	12,671.7	-1,279.5	1,029.0	1,279.5	0.00	0.00	
13,600.0	97.39	180.00	12,658.9	-1,378.7	1,029.0	1,378.7	0.00	0.00	
13,700.0	97.39	180.00	12,646.0	-1,477.8	1,029.0	1,477.8	0.00	0.00	
13,800.0	97.39	180.00	12,633.1	-1,577.0	1,029.0	1,577.0	0.00	0.00	
13,900.0	97.39	180.00	12,620.3	-1,676.2	1,029.0	1,676.2	0.00	0.00	
14,000.0	97.39	180.00	12,607.4	-1,775.4	1,029.0	1,775.4	0.00	0.00	
14,100.0	97.39	180.00	12,594.5	-1,874.5	1,029.1	1,874.5	0.00	0.00	
14,200.0	97.39	180.00	12,581.7	-1,973.7	1,029.1	1,973.7	0.00	0.00	
14,300.0	97.39	180.00	12,568.8	-2,072.9	1,029.1	2,072.9	0.00	0.00	
14,400.0	97.39	180.00	12,556.0	-2,172.0	1,029.1	2,172.0	0.00	0.00	

# Planning Report

<b>Database:</b>	USA EDM 5000 Multi Users DB	<b>Local Co-ordinate Reference:</b>	Well Bulldog #17-21H-893
<b>Company:</b>	Axia Energy	<b>TVD Reference:</b>	WELL @ 6588.0ft (Original Well Elev)
<b>Project:</b>	Moffat County, CO	<b>MD Reference:</b>	WELL @ 6588.0ft (Original Well Elev)
<b>Site:</b>	SEC 17-T8N-R93W	<b>North Reference:</b>	True
<b>Well:</b>	Bulldog #17-21H-893	<b>Survey Calculation Method:</b>	Minimum Curvature
<b>Wellbore:</b>	Hz		
<b>Design:</b>	Plan #2		

Planned Survey									
Measured Depth (ft)	Inclination (°)	Azimuth (°)	Vertical Depth (ft)	+N/-S (ft)	+E/-W (ft)	Vertical Section (ft)	Dogleg Rate (°/100ft)	Build Rate (°/100ft)	Comments / Formations
14,500.0	97.39	180.00	12,543.1	-2,271.2	1,029.1	2,271.2	0.00	0.00	
14,600.0	97.39	180.00	12,530.2	-2,370.4	1,029.1	2,370.4	0.00	0.00	
14,700.0	97.39	180.00	12,517.4	-2,469.5	1,029.1	2,469.5	0.00	0.00	
14,800.0	97.39	180.00	12,504.5	-2,568.7	1,029.1	2,568.7	0.00	0.00	
14,900.0	97.39	180.00	12,491.7	-2,667.9	1,029.1	2,667.9	0.00	0.00	
15,000.0	97.39	180.00	12,478.8	-2,767.1	1,029.1	2,767.1	0.00	0.00	
15,100.0	97.39	180.00	12,465.9	-2,866.2	1,029.1	2,866.2	0.00	0.00	
15,200.0	97.39	180.00	12,453.1	-2,965.4	1,029.1	2,965.4	0.00	0.00	
15,300.0	97.39	180.00	12,440.2	-3,064.6	1,029.1	3,064.6	0.00	0.00	
15,400.0	97.39	180.00	12,427.3	-3,163.7	1,029.1	3,163.7	0.00	0.00	
15,500.0	97.39	180.00	12,414.5	-3,262.9	1,029.1	3,262.9	0.00	0.00	
15,600.0	97.39	180.00	12,401.6	-3,362.1	1,029.1	3,362.1	0.00	0.00	
15,700.0	97.39	180.00	12,388.8	-3,461.2	1,029.1	3,461.2	0.00	0.00	
15,800.0	97.39	180.00	12,375.9	-3,560.4	1,029.1	3,560.4	0.00	0.00	
15,900.0	97.39	180.00	12,363.0	-3,659.6	1,029.1	3,659.6	0.00	0.00	
16,000.0	97.39	180.00	12,350.2	-3,758.7	1,029.1	3,758.7	0.00	0.00	
16,100.0	97.39	180.00	12,337.3	-3,857.9	1,029.1	3,857.9	0.00	0.00	
16,200.0	97.39	180.00	12,324.4	-3,957.1	1,029.1	3,957.1	0.00	0.00	
16,300.0	97.39	180.00	12,311.6	-4,056.3	1,029.1	4,056.3	0.00	0.00	
16,400.0	97.39	180.00	12,298.7	-4,155.4	1,029.1	4,155.4	0.00	0.00	
16,500.0	97.39	180.00	12,285.9	-4,254.6	1,029.1	4,254.6	0.00	0.00	
16,600.0	97.39	180.00	12,273.0	-4,353.8	1,029.1	4,353.8	0.00	0.00	
16,700.0	97.39	180.00	12,260.1	-4,452.9	1,029.1	4,452.9	0.00	0.00	
16,800.0	97.39	180.00	12,247.3	-4,552.1	1,029.1	4,552.1	0.00	0.00	
16,900.0	97.39	180.00	12,234.4	-4,651.3	1,029.1	4,651.3	0.00	0.00	
17,000.0	97.39	180.00	12,221.5	-4,750.4	1,029.1	4,750.4	0.00	0.00	
17,100.0	97.39	180.00	12,208.7	-4,849.6	1,029.1	4,849.6	0.00	0.00	
17,200.0	97.39	180.00	12,195.8	-4,948.8	1,029.1	4,948.8	0.00	0.00	
17,300.0	97.39	180.00	12,183.0	-5,047.9	1,029.2	5,047.9	0.00	0.00	
17,400.0	97.39	180.00	12,170.1	-5,147.1	1,029.2	5,147.1	0.00	0.00	
17,500.0	97.39	180.00	12,157.2	-5,246.3	1,029.2	5,246.3	0.00	0.00	
17,600.0	97.39	180.00	12,144.4	-5,345.5	1,029.2	5,345.5	0.00	0.00	
17,700.0	97.39	180.00	12,131.5	-5,444.6	1,029.2	5,444.6	0.00	0.00	
17,800.0	97.39	180.00	12,118.6	-5,543.8	1,029.2	5,543.8	0.00	0.00	
17,900.0	97.39	180.00	12,105.8	-5,643.0	1,029.2	5,643.0	0.00	0.00	
18,000.0	97.39	180.00	12,092.9	-5,742.1	1,029.2	5,742.1	0.00	0.00	
18,100.0	97.39	180.00	12,080.1	-5,841.3	1,029.2	5,841.3	0.00	0.00	
18,200.0	97.39	180.00	12,067.2	-5,940.5	1,029.2	5,940.5	0.00	0.00	
18,300.0	97.39	180.00	12,054.3	-6,039.6	1,029.2	6,039.6	0.00	0.00	
18,400.0	97.39	180.00	12,041.5	-6,138.8	1,029.2	6,138.8	0.00	0.00	
18,500.0	97.39	180.00	12,028.6	-6,238.0	1,029.2	6,238.0	0.00	0.00	
18,600.0	97.39	180.00	12,015.7	-6,337.1	1,029.2	6,337.1	0.00	0.00	
18,700.0	97.39	180.00	12,002.9	-6,436.3	1,029.2	6,436.3	0.00	0.00	
18,800.0	97.39	180.00	11,990.0	-6,535.5	1,029.2	6,535.5	0.00	0.00	
18,900.0	97.39	180.00	11,977.2	-6,634.7	1,029.2	6,634.7	0.00	0.00	
19,000.0	97.39	180.00	11,964.3	-6,733.8	1,029.2	6,733.8	0.00	0.00	
19,100.0	97.39	180.00	11,951.4	-6,833.0	1,029.2	6,833.0	0.00	0.00	
19,200.0	97.39	180.00	11,938.6	-6,932.2	1,029.2	6,932.2	0.00	0.00	
19,300.0	97.39	180.00	11,925.7	-7,031.3	1,029.2	7,031.3	0.00	0.00	
19,400.0	97.39	180.00	11,912.9	-7,130.5	1,029.2	7,130.5	0.00	0.00	
19,500.0	97.39	180.00	11,900.0	-7,229.7	1,029.2	7,229.7	0.00	0.00	
19,600.0	97.39	180.00	11,887.1	-7,328.8	1,029.2	7,328.8	0.00	0.00	

## Planning Report

<b>Database:</b>	USA EDM 5000 Multi Users DB	<b>Local Co-ordinate Reference:</b>	Well Bulldog #17-21H-893
<b>Company:</b>	Axia Energy	<b>TVD Reference:</b>	WELL @ 6588.0ft (Original Well Elev)
<b>Project:</b>	Moffat County, CO	<b>MD Reference:</b>	WELL @ 6588.0ft (Original Well Elev)
<b>Site:</b>	SEC 17-T8N-R93W	<b>North Reference:</b>	True
<b>Well:</b>	Bulldog #17-21H-893	<b>Survey Calculation Method:</b>	Minimum Curvature
<b>Wellbore:</b>	Hz		
<b>Design:</b>	Plan #2		

### Planned Survey

Measured Depth (ft)	Inclination (°)	Azimuth (°)	Vertical Depth (ft)	+N/-S (ft)	+E/-W (ft)	Vertical Section (ft)	Dogleg Rate (°/100ft)	Build Rate (°/100ft)	Comments / Formations
19,700.0	97.39	180.00	11,874.3	-7,428.0	1,029.2	7,428.0	0.00	0.00	
19,800.0	97.39	180.00	11,861.4	-7,527.2	1,029.2	7,527.2	0.00	0.00	
19,900.0	97.39	180.00	11,848.5	-7,626.3	1,029.2	7,626.3	0.00	0.00	
20,000.0	97.39	180.00	11,835.7	-7,725.5	1,029.2	7,725.5	0.00	0.00	
20,100.0	97.39	180.00	11,822.8	-7,824.7	1,029.2	7,824.7	0.00	0.00	
20,200.0	97.39	180.00	11,810.0	-7,923.9	1,029.2	7,923.9	0.00	0.00	
20,300.0	97.39	180.00	11,797.1	-8,023.0	1,029.2	8,023.0	0.00	0.00	
20,400.0	97.39	180.00	11,784.2	-8,122.2	1,029.2	8,122.2	0.00	0.00	
20,500.0	97.39	180.00	11,771.4	-8,221.4	1,029.3	8,221.4	0.00	0.00	
20,600.0	97.39	180.00	11,758.5	-8,320.5	1,029.3	8,320.5	0.00	0.00	
20,700.0	97.39	180.00	11,745.6	-8,419.7	1,029.3	8,419.7	0.00	0.00	
20,800.0	97.39	180.00	11,732.8	-8,518.9	1,029.3	8,518.9	0.00	0.00	
20,900.0	97.39	180.00	11,719.9	-8,618.0	1,029.3	8,618.0	0.00	0.00	
21,000.0	97.39	180.00	11,707.1	-8,717.2	1,029.3	8,717.2	0.00	0.00	
21,100.0	97.39	180.00	11,694.2	-8,816.4	1,029.3	8,816.4	0.00	0.00	
21,200.0	97.39	180.00	11,681.3	-8,915.6	1,029.3	8,915.6	0.00	0.00	
21,300.0	97.39	180.00	11,668.5	-9,014.7	1,029.3	9,014.7	0.00	0.00	
21,400.0	97.39	180.00	11,655.6	-9,113.9	1,029.3	9,113.9	0.00	0.00	
21,500.0	97.39	180.00	11,642.7	-9,213.1	1,029.3	9,213.1	0.00	0.00	
21,600.0	97.39	180.00	11,629.9	-9,312.2	1,029.3	9,312.2	0.00	0.00	
21,700.0	97.39	180.00	11,617.0	-9,411.4	1,029.3	9,411.4	0.00	0.00	
21,800.0	97.39	180.00	11,604.2	-9,510.6	1,029.3	9,510.6	0.00	0.00	
21,900.0	97.39	180.00	11,591.3	-9,609.7	1,029.3	9,609.7	0.00	0.00	
21,925.6	97.39	180.00	11,588.0	-9,635.1	1,029.3	9,635.1	0.00	0.00	TD at 21925.6 - Bulldog #17-21H-893 PBHL

### Targets

Target Name	Dip Angle (°)	Dip Dir. (°)	TVD (ft)	+N/-S (ft)	+E/-W (ft)	Northing (ft)	Easting (ft)	Latitude	Longitude
- hit/miss target									
- Shape									
Bulldog #17-21H-893 PE	0.00	0.00	11,588.0	-9,635.1	1,029.3	1,479,154.40	2,345,013.52	40.624742	-107.859867
- plan hits target center									
- Point									

### Formations

Measured Depth (ft)	Vertical Depth (ft)	Name	Lithology	Dip (°)	Dip Direction (°)
4,412.3	4,393.0	Lewis		-7.39	180.00
6,289.9	6,246.0	Mesaverde		-7.39	180.00
9,825.6	9,766.0	Mancos		-7.39	180.00
10,203.6	10,144.0	Morapos		-7.39	180.00
10,473.6	10,414.0	Mancos Marker		-7.39	180.00
12,797.2	12,688.0	Niobrara		-7.39	180.00
12,979.8	12,788.0	Top Target		-7.39	180.00

## Planning Report

<b>Database:</b>	USA EDM 5000 Multi Users DB	<b>Local Co-ordinate Reference:</b>	Well Bulldog #17-21H-893
<b>Company:</b>	Axia Energy	<b>TVD Reference:</b>	WELL @ 6588.0ft (Original Well Elev)
<b>Project:</b>	Moffat County, CO	<b>MD Reference:</b>	WELL @ 6588.0ft (Original Well Elev)
<b>Site:</b>	SEC 17-T8N-R93W	<b>North Reference:</b>	True
<b>Well:</b>	Bulldog #17-21H-893	<b>Survey Calculation Method:</b>	Minimum Curvature
<b>Wellbore:</b>	Hz		
<b>Design:</b>	Plan #2		

### Plan Annotations

Measured Depth (ft)	Vertical Depth (ft)	Local Coordinates		Comment
		+N/-S (ft)	+E/-W (ft)	
2,000.0	2,000.0	0.0	0.0	KOP @ 2000'
3,200.0	3,191.2	-40.8	118.4	EOB; Inc=12°
7,230.0	7,133.2	-313.6	910.6	Start Drop -1.00
8,430.0	8,324.4	-354.3	1,029.0	EOD; Inc=0°
12,245.2	12,139.7	-354.3	1,029.0	Start Build 10.00
13,219.1	12,707.9	-1,001.0	1,029.0	LP @ 12707' TVD; 97.39°
21,925.6	11,588.0	-9,635.1	1,029.3	TD at 21925.6