

T8N, R93W, 6th. P.M.

AXIA ENERGY

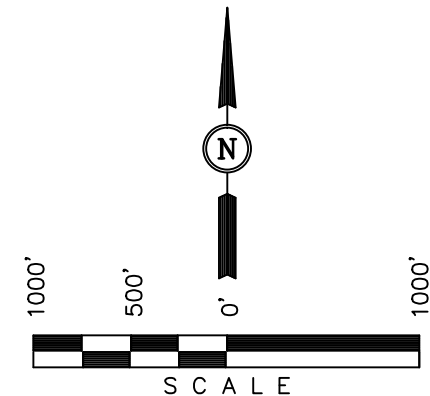
Well location, BULLDOG #17-21H-893 (Surface Location), located as shown in the NW 1/4 NW 1/4 of Section 17, T8N, R93W, 6th. P.M., Moffat County, Colorado.

BASIS OF ELEVATION

SPOT ELEVATION LOCATED AT THE NORTHEAST CORNER OF SECTION 10, T6N, R93W, 6th. P.M., TAKEN FROM THE HORSE GULCH QUADRANGLE, COLORADO, MOFFAT COUNTY, 7.5 MINUTE QUAD. (TOPOGRAPHIC MAP) PUBLISHED BY THE UNITED STATES DEPARTMENT OF THE INTERIOR, GEOLOGICAL SURVEY. SAID ELEVATION IS MARKED AS BEING 6246 FEET.

BASIS OF BEARINGS

BASIS OF BEARINGS IS A G.P.S. OBSERVATION.



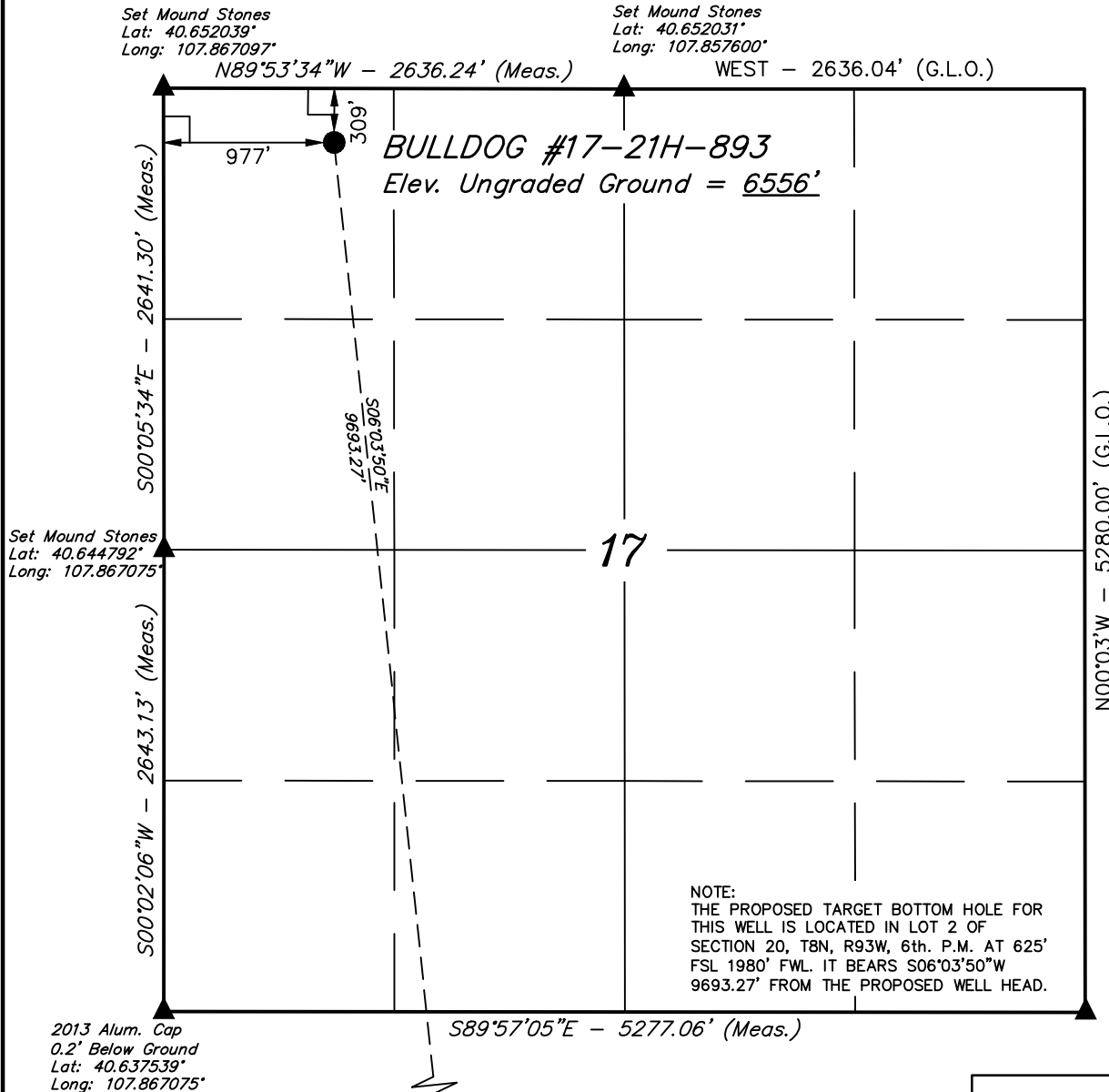
CERTIFICATE

THIS IS TO CERTIFY THAT THE ABOVE PLAT WAS PREPARED FROM FIELD NOTES OF ACTUAL SURVEYS MADE BY ME OR UNDER MY SUPERVISION AND THAT THE SAME ARE TRUE AND CORRECT TO THE BEST OF MY KNOWLEDGE AND BELIEF.

REGISTERED LAND SURVEYOR
REGISTRATION NO. 17492
STATE OF COLORADO

04-01-13

Set Mound Stones
Fence Corner
Lat: 40.637533°
Long: 107.848067°



LEGEND:

- └─┘ = 90° SYMBOL
- = PROPOSED WELL HEAD.
- ▲ = SECTION CORNERS LOCATED.

○ Target Bottom Hole

PDOP = 1.2

NAD 83 (SURFACE LOCATION)	
LATITUDE	= 40°39'04.28" (40.651189)
LONGITUDE	= 107°51'48.87" (107.863575)
NAD 27 (SURFACE LOCATION)	
LATITUDE	= 40°39'04.39" (40.651219)
LONGITUDE	= 107°51'46.60" (107.862944)
STATE PLANE NAD 83	
N: 1488810.34	E: 2344236.52
STATE PLANE NAD 27	
N: 488808.79	E: 1344394.67

UINTAH ENGINEERING & LAND SURVEYING
85 SOUTH 200 EAST - VERNAL, UTAH 84078
(435) 789-1017

SCALE 1" = 1000'	DATE SURVEYED: 03-25-13	DATE DRAWN: 03-27-13
PARTY G.M. N.F. J.G.G.	REFERENCES G.L.O. PLAT	
WEATHER COLD	FILE	AXIA ENERGY

T8N, R93W, 6th. P.M.

● **BULLDOG #17-21H-893**
Surface Location

2013 Alum. Cap
0.2' Below Ground
Lat: 40.637539°
Long: 107.867075°

Set Mound Stones
Fence Corner
Lat: 40.637533°
Long: 107.848067°

S89°57'05"E - 5277.06' (Meas.)

NOTE:
THE PROPOSED TARGET BOTTOM HOLE
BEARS S06°03'50"E 9693.27' FROM THE
PROPOSED WELL HEAD WHICH IS LOCATED IN
THE NW 1/4 NW 1/4 OF SECTION 17, T8N,
R93W, 6th. P.M. AT 309' FNL 977' FWL.

S06°03'50"E
9693.27'

20

N00°03'E - 5280.00' (G.L.O.)

S00°13'48"E - 5286.31' (Meas.)

LOT 1

LOT 2

1980'

○ Target Bottom Hole

625'

S89°53'24"E - 2608.90' (Meas.)

S89°57'W - 2640.00' (G.L.O.)

2013 Alum. Cap
0.2' Below Ground
Lat: 40.623033°
Long: 107.866986°

H.E. No. 356

Set Mound Stones
E-W Fence Line
Lat: 40.623022°
Long: 107.857592°

LEGEND:

└─┘ = 90° SYMBOL

● = PROPOSED WELL HEAD.

▲ = SECTION CORNERS LOCATED.

AXIA ENERGY

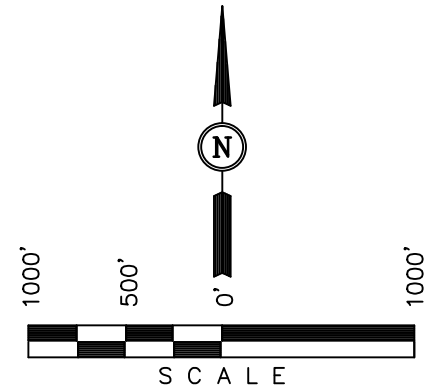
Well location, BULLDOG #17-21H-893 (Target Bottom Hole), located as shown in LOT 2 of Section 20, T8N, R93W, 6th. P.M., Moffat County, Colorado.

BASIS OF ELEVATION

SPOT ELEVATION LOCATED AT THE NORTHEAST CORNER OF SECTION 10, T6N, R93W, 6th. P.M., TAKEN FROM THE HORSE GULCH QUADRANGLE, COLORADO, MOFFAT COUNTY, 7.5 MINUTE QUAD. (TOPOGRAPHIC MAP) PUBLISHED BY THE UNITED STATES DEPARTMENT OF THE INTERIOR, GEOLOGICAL SURVEY. SAID ELEVATION IS MARKED AS BEING 6246 FEET.

BASIS OF BEARINGS

BASIS OF BEARINGS IS A G.P.S. OBSERVATION.



CERTIFICATE

THIS IS TO CERTIFY THAT THE ABOVE PLAT WAS PREPARED FROM FIELD NOTES OF ACTUAL SURVEYS MADE BY ME OR UNDER MY SUPERVISION AND THAT THE SAME ARE TRUE AND CORRECT TO THE BEST OF MY KNOWLEDGE AND BELIEF.

REGISTERED LAND SURVEYOR
REGISTRATION NO. 17492
STATE OF COLORADO
04-01-13

UINTAH ENGINEERING & LAND SURVEYING
85 SOUTH 200 EAST - VERNAL, UTAH 84078
(435) 789-1017

SCALE 1" = 1000'	DATE SURVEYED: 03-25-13	DATE DRAWN: 03-27-13
PARTY G.M. N.F. J.G.G.	REFERENCES G.L.O. PLAT	
WEATHER COLD	FILE AXIA ENERGY	

NAD 83 (TARGET BOTTOM HOLE)
LATITUDE = 40°37'29.07" (40.624742)
LONGITUDE = 107°51'35.52" (107.859867)
NAD 27 (TARGET BOTTOM HOLE)
LATITUDE = 40°37'29.18" (40.624772)
LONGITUDE = 107°51'33.25" (107.859236)
STATE PLANE NAD 83
N: 1479150.97 E: 2345008.89
STATE PLANE NAD 27
N: 479149.50 E: 1345167.05