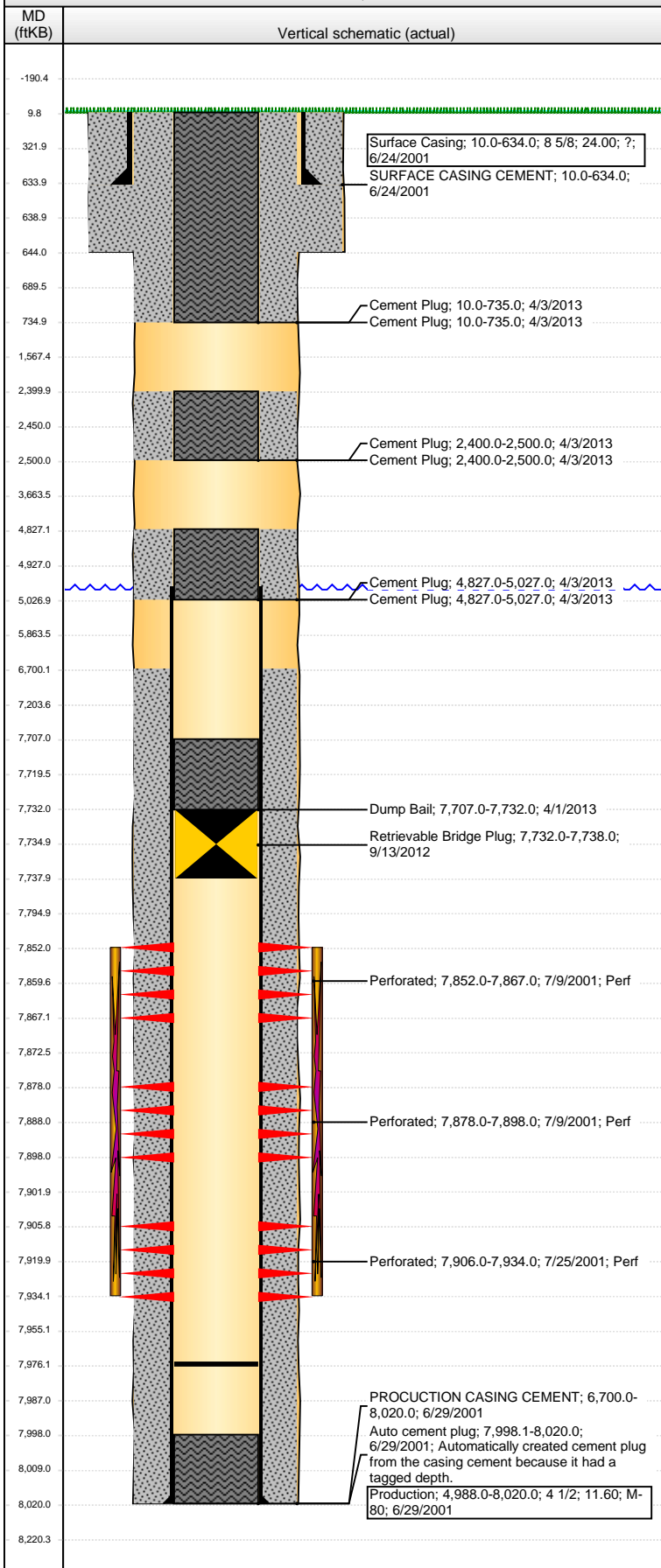


Well Name: BRATTAIN L12-11JI

VERTICAL - ORIGINAL HOLE, 4/22/2013 4:44:15 PM



Well Header

API 05-123-20428	Business Unit WATTENBERG	District 15	Well Config VERTICAL
Original KB Elevation (ft) 4,995.00	KB - GL / MSL (ftKB) 10.00	Spud Date 6/23/2001	P & A Date

Comment

batt w/Bell L12-11 9/01

Directions To Well

RD 34 & 35, E 3/10, N 2/10, E INTO.

Congressional Location

Quarter 1	Quarter 2	Quarter 3	Quarter 4	Section	Township	Twnshp N...	Range	Rng E/W Dir
		NE	SW	12		3 N	66	W

Bottom Hole Location

North-South Distance (ft)	From N or S Line	East-West Distance (ft)	From E or W Line

Plug Back Total Depths

Date	Depth (ftKB)	Method	Com
6/29/2001	7,976.0	CASED HOLE LOG	DEPTH-LOGGER/CBL

Wellbore Sections

Section Des	Size (in)	Act Top (ftKB)	Act Btm (ftKB)
SURFACE	12 1/4	10.0	644.0
PRODUCTION	7 7/8	644.0	8,020.0

Zone Statuses

Zone Name	Status Date	Status	Job
J SAND	9/10/2001	PR	DRILLING/COMPLETION - ORIGINAL, 6/24/2001 00:00
J SAND	4/3/2013	AB	ABANDON WELL, 4/1/2013 06:00

Casing Strings

Surface Casing, 634.0ftKB

Casing Description	Run Date	OD (in)	Wt/Len (l...)	Grade	Top (ftKB)	MD (ftKB)
Surface Casing	6/24/2001	8 5/8	24.00	?	10.0	634.0

Production, 8,020.0ftKB

Casing Description	Run Date	OD (in)	Wt/Len (l...)	Grade	Top (ftKB)	MD (ftKB)
Production	6/29/2001	4 1/2	11.60	M-80	10.0	8,020.0

Cement

Description	Top Depth (ftKB)	Bottom Depth (ftKB)
SURFACE CASING CEMENT	10.0	634.0
PRODUCTION CASING CEMENT	6,700.0	8,020.0
Dump Bail	7,707.0	7,732.0
Cement Plug	4,827.0	5,027.0
Cement Plug	4,827.0	5,027.0
Cement Plug	2,400.0	2,500.0
Cement Plug	2,400.0	2,500.0
Cement Plug	10.0	735.0
Cement Plug	10.0	735.0

Tubing Components

Item Des	OD (in)	Wt (lb/ft)	Grade	Jts	Len (ft)	Btm (ftKB)	Btm (TVD) (ftKB)

Perforation Data

Zone	Bnch/St g	Entered Shot Total	Top (ftKB)	Btm (ftKB)	Date
J SAND, ORIGINAL HOLE		31	7,852.00	7,867.00	7/9/2001
J SAND, ORIGINAL HOLE		41	7,878.00	7,898.00	7/9/2001
J SAND, ORIGINAL HOLE		56	7,906.00	7,934.00	7/25/2001

Stimulations & Treatments

Date	Zone	Primary Job Type
9/6/2001	J SAND, ORIGINAL HOLE	DRILLING/COMPLETION - ORIGINAL
Technical Result	Tech Result Details	Tech Result Note

Comment

MIRU BJ Services to 2 3/8" tubing and 4 1/2" casing. The J-Sand was frac'd via TRIPLE ENTRY from 7,852' - 7,934'. Performed reverse step rate test. Calculated 10 perfs open out of 126, NWB friction = 433 psi, perf friction = 1347 psi, leakoff Coef. =

Well Name: BRATTAIN L12-11JI

VERTICAL - ORIGINAL HOLE, 4/22/2013 4:44:15 PM

Other In Hole

Run Date	Des	OD (in)	Top (ftKB)	Btm (ftKB)
9/13/2012	Retrievable Bridge Plug	3.99	7,732.0	7,738.0

Logs

Date	Type	Top (ftKB)	Btm (ftKB)
6/29/2001	COMPENSATED DENSITY	4,400.0	8,006.0
6/29/2001	DIFL/DENS/GR/GRD/CAL		
7/6/2001	CBL/CCL/GR		

