



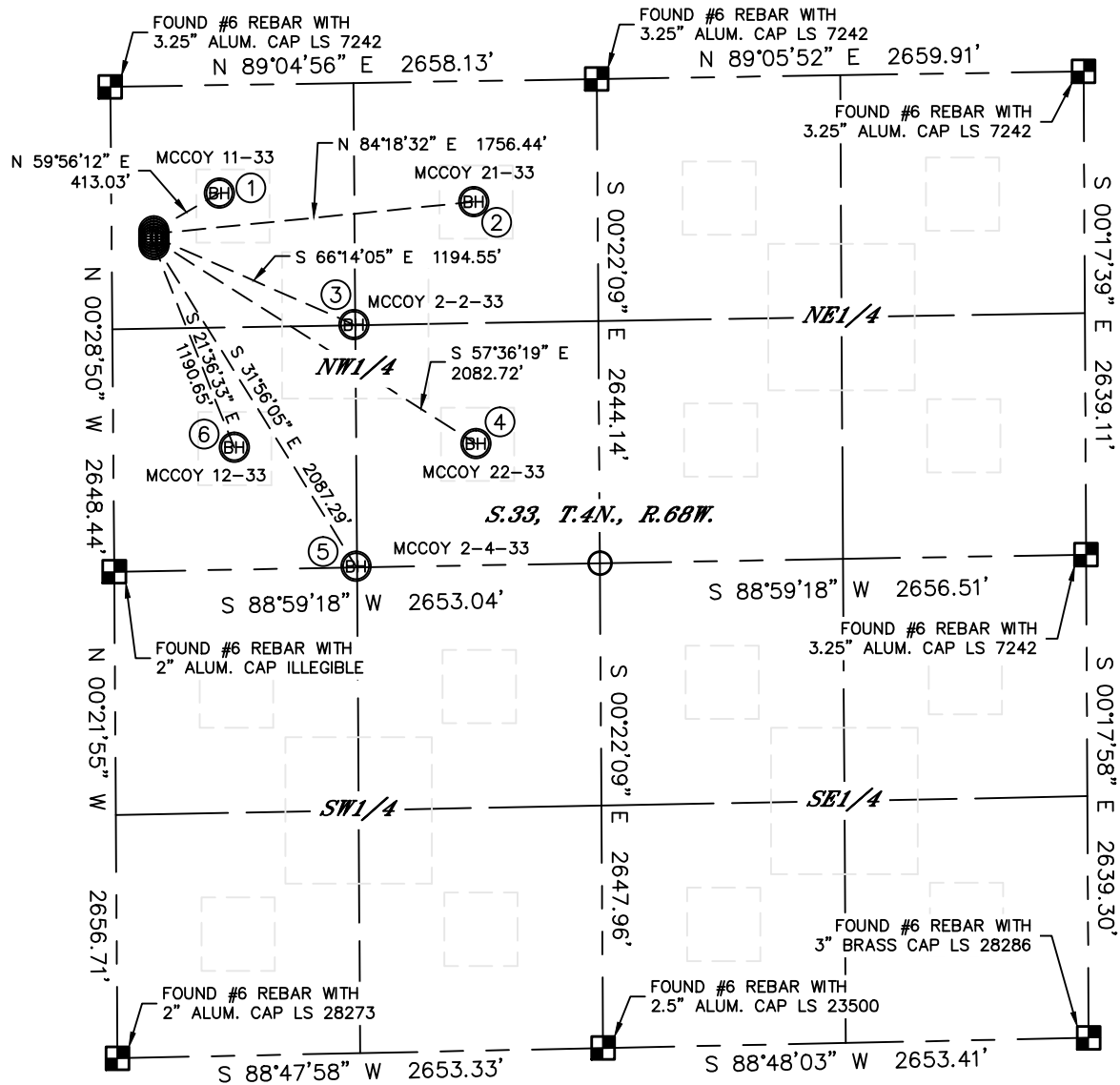
Lat40°, Inc. 1635 Foxtrail Drive, Suite 325 Loveland, CO 970-776-3321

MULTI-WELL PLAN

MCCOY 11-33 PAD

THIS MAP DOES NOT REPRESENT A BOUNDARY SURVEY

SECTION: 33
TOWNSHIP: 4N
RANGE: 68W



- | | | | | | |
|--|---|---|--|---|---|
| ① | ② | ③ | ④ | ⑤ | ⑥ |
| -BOTTOM HOLE-
MCCOY 11-33
590' FNL
590' FWL
LAT: 40.27527°N
LONG: 105.01561°W | -BOTTOM HOLE-
MCCOY 21-33
660' FNL
1980' FWL
LAT: 40.27512°N
LONG: 105.01063°W | -BOTTOM HOLE-
MCCOY 2-2-33
1320' FNL
1320' FWL
LAT: 40.27329°N
LONG: 105.01299°W | -BOTTOM HOLE-
MCCOY 22-33
1980' FNL
1980' FWL
LAT: 40.27150°N
LONG: 105.01061°W | -BOTTOM HOLE-
MCCOY 2-4-33
2640' FNL
1320' FWL
LAT: 40.26967°N
LONG: 105.01297°W | -BOTTOM HOLE-
MCCOY 12-33
1980' FNL
660' FWL
LAT: 40.27146°N
LONG: 105.01534°W |

LEGEND



= ALIQUOT MONUMENT AS DESCRIBED



= CALCULATED POSITION



DATE: 12/12/2012
PROJECT#: 2012087

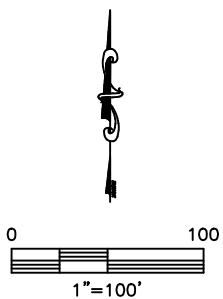


Lat40°, Inc. 1635 Foxtrail Drive, Suite 325 Loveland, CO 970-776-3321

MULTI-WELL PLAN

MCCOY 11-33 PAD

SECTION: 33
TOWNSHIP: 4N
RANGE: 68W



DATE: 12/12/2012
PROJECT#: 2012087