

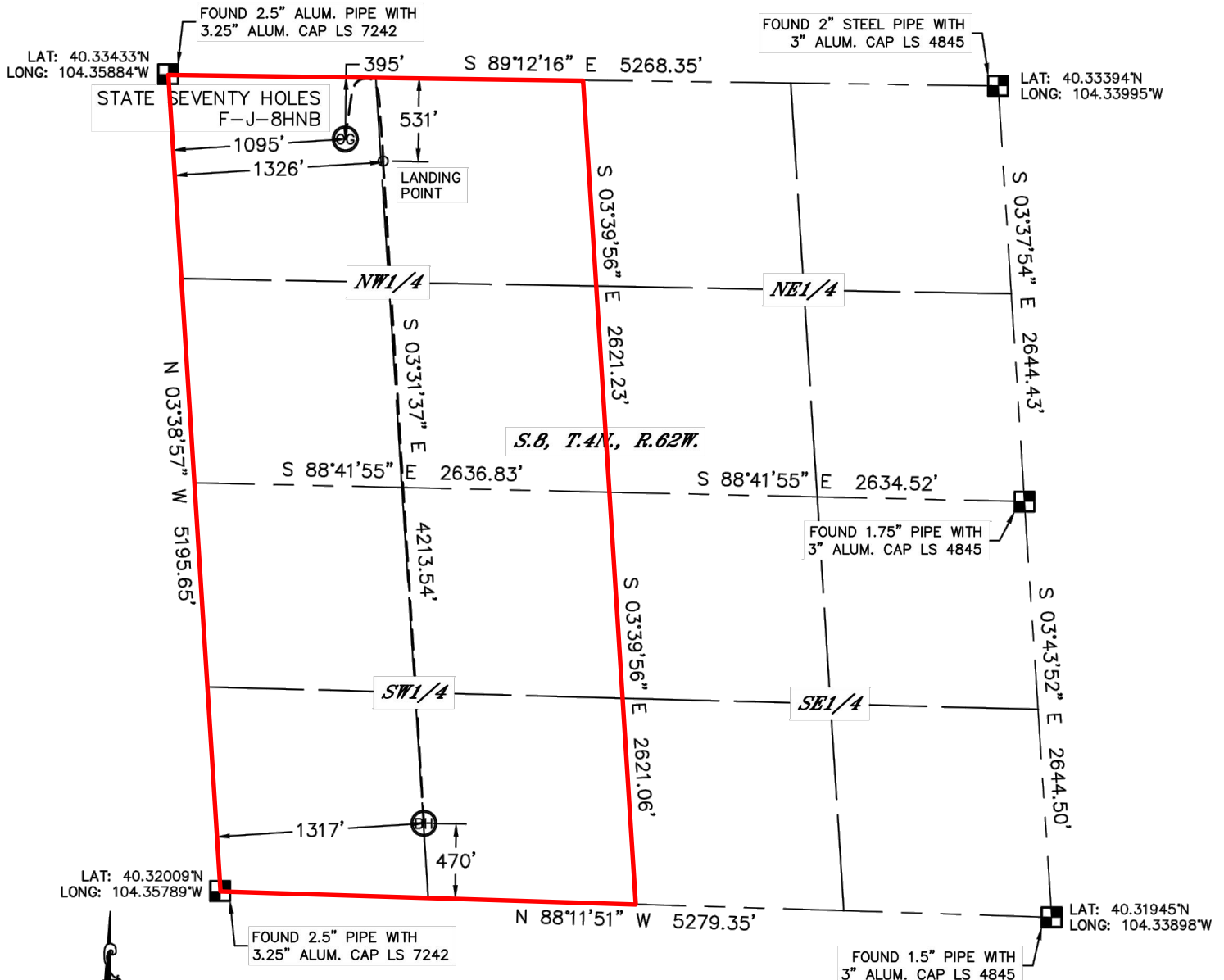


Lat40°, Inc. 1635 Foxtrail Drive, Suite 325 Loveland, CO 970-776-3321

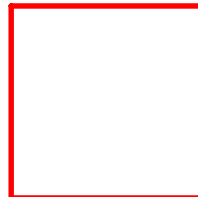
WELL LOCATION CERTIFICATE

THIS MAP DOES NOT REPRESENT A BOUNDARY SURVEY

SECTION: 8
TOWNSHIP: 4N
RANGE: 62W



In accordance with a request from Michael Meagher with BONANZA CREEK ENERGY, INC. Lat40°, Inc. has determined the surface location of the STATE SEVENTY HOLES F-J-8HNB to be 395' from the NORTH line and 1095' from the WEST line and the bottom hole to be 470' from the SOUTH line and



Wellbore Spacing Unit Outline



Wellbore Spacing Unit Map

22 April 2013 ksc

State Seventy Holes F-J-8HNB
W/2 Sec. 08 T4N R62W 6th PM
Weld County, Colorado