

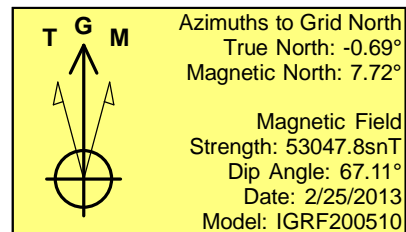
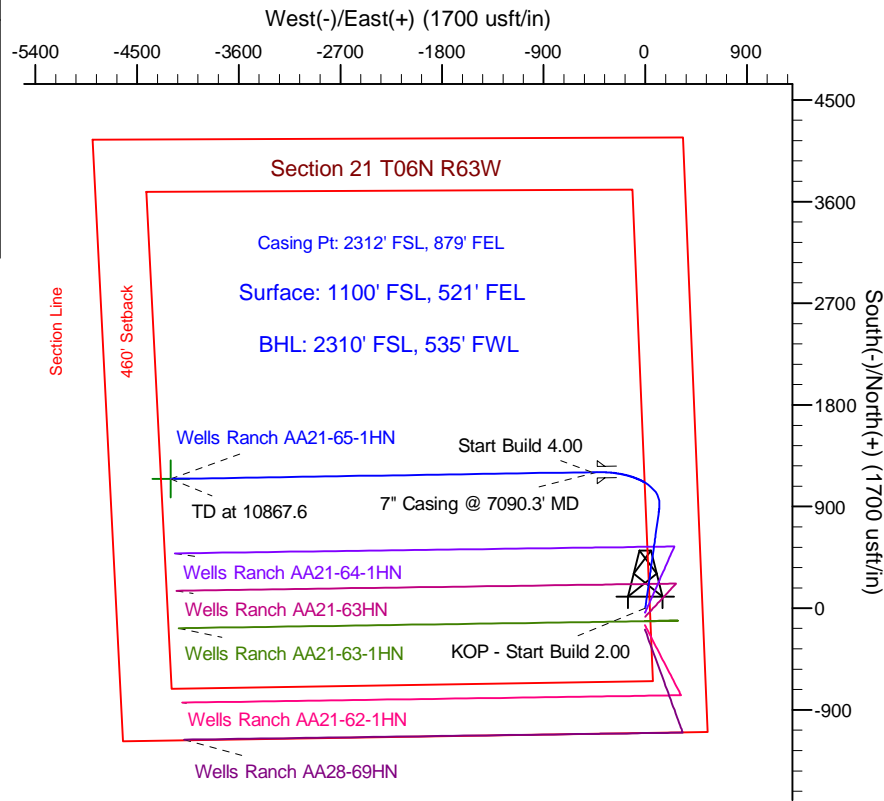
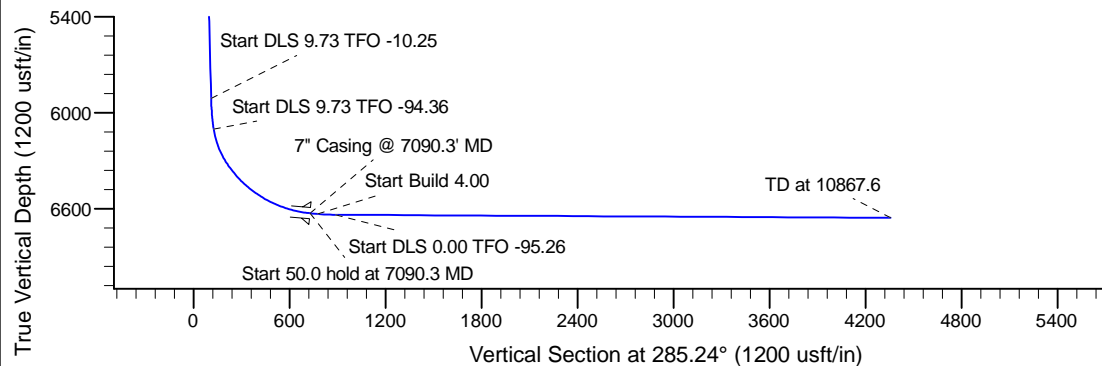
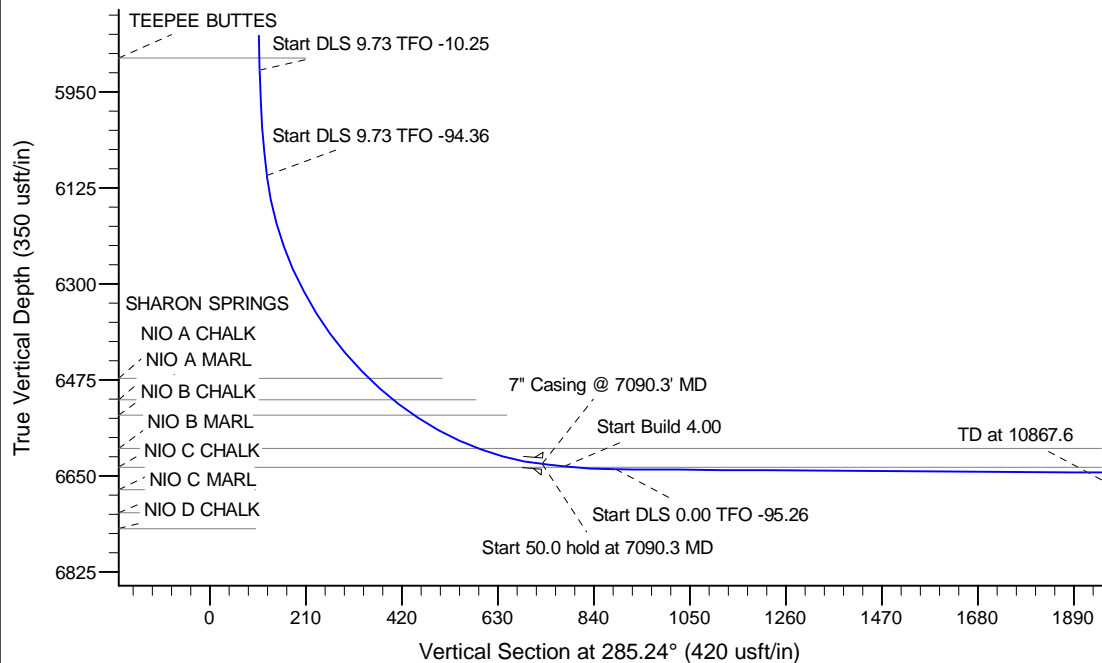
Project: Wattenberg Field
 Site: AA (Sec.21-T06N-R63W) Weld County, CO
 Well: Wells Ranch AA21-65-1HN
 Wellbore: Original Drilling
 Design: APD - Rev 0

Northern Region Drilling

Geodetic System: US State Plane 1983
 Datum: North American Datum 1983
 Ellipsoid: GRS 1980
 Zone: Colorado Northern Zone
 System Datum: Mean Sea Level

SECTION DETAILS

Sec	MD	Inc	Azi	TVD	+N/-S	+E/-W	Dleg	TFace	VSec	Target
1	0.0	0.00	0.00	0.0	0.0	0.0	0.00	0.00	0.0	
2	1200.0	0.00	0.00	1200.0	0.0	0.0	0.00	0.00	0.0	
3	1750.0	11.00	8.00	1746.6	52.1	7.3	2.00	8.00	6.6	
4	5991.3	11.00	8.00	5910.0	853.5	120.0	0.00	0.00	108.7	
5	6198.1	31.00	1.17	6102.1	927.1	123.8	9.73	-10.25	124.3	
6	7090.3	85.00	269.09	6628.0	1205.0	-425.0	9.73	-94.36	726.9	
7	7140.3	85.00	269.09	6632.4	1204.2	-474.8	0.00	0.00	774.7	
8	7257.8	89.70	269.09	6637.8	1202.3	-592.1	4.00	0.00	887.4	
9	10867.6	89.70	269.09	6656.7	1144.9	-4201.4	0.00	-95.26	4354.6	Wells Ranch AA21-65-1HN BHL 2310'FSL, 535'FWL



WELL DETAILS: Wells Ranch AA21-65-1HN				
Ground Level: 4730.0				
0.0	0.0	1415075.01	3296554.19	40.467890
Latitude				
Longitude				
Plan: APD - Rev 0 (Wells Ranch AA21-65-1HN/Original Drilling)				
Created By: Shailey Jewell				
Date: 11:51, March 11 2013				

OK to submit with 2A as per Noble Drilling
 3/12/13 5:24