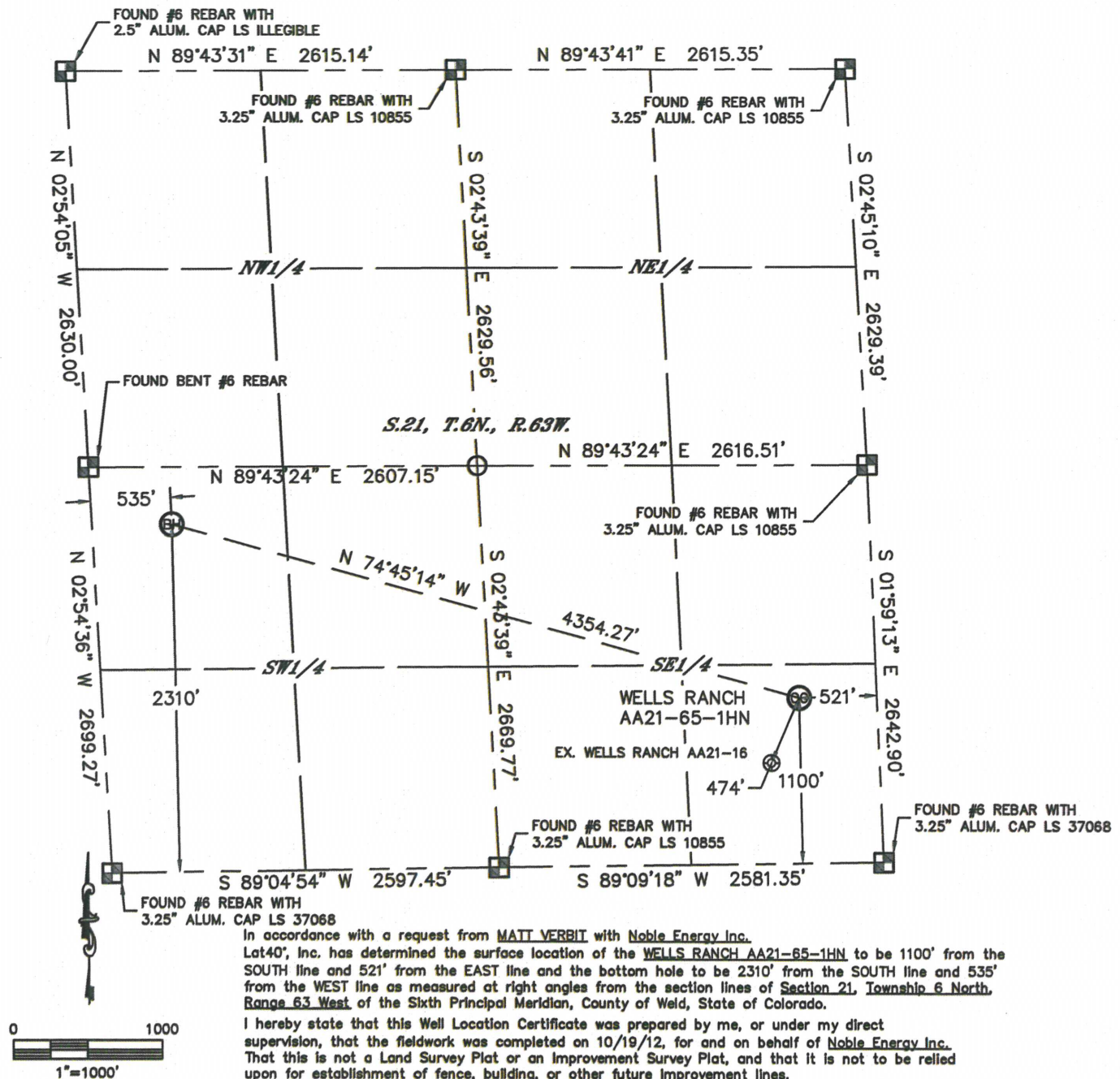


Lat40°, Inc. 1635 Foxtrail Drive, Suite 325 Loveland, CO 970-776-3321

WELL LOCATION CERTIFICATE

THIS MAP DOES NOT REPRESENT A BOUNDARY SURVEY

SECTION: 21
TOWNSHIP: 6N
RANGE: 63W



NOTE:

- 1) Bearings shown are Grid Bearings of the Colorado State Plane Coordinate System, North Zone, North American Datum 1983/2007. The lineal dimensions as contained herein are based upon the "U.S. Survey Foot."
- 2) Ground elevations are based on an observed GPS elevation (NAVD 1988 DATUM).
- 3) NEAREST EXISTING WELL: WELLS RANCH AA21-16, 474'
- 4) IMPROVEMENTS: See LOCATION DRAWING for all visible improvements within 400' of disturbed area.
- 5) SURFACE USE: RANGELAND
- 6) INSTRUMENT OPERATOR: ADAM KELLY

NOTE

According to Colorado law, you must commence any legal action based upon any defect in this W.L.C. within three years after you discover such defect. In no event, may any action based upon any defect in this survey be commenced more than ten years after the date of the certificate shown hereon. (13-80-105 C.R.S.)

LEGEND

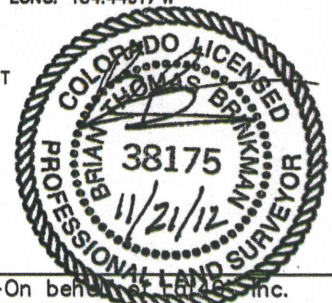
- = ALIQUOT MONUMENT AS DESCRIBED
- = CALCULATED POSITION

SURFACE LOCATION

LAT: 40.46789°N
LONG: 104.43412°W
PDOP: 1.7
ELEV: 4730'
1/4, 1/4: SE1/4SE1/4
NEAREST PROPERTY LINE: 521' EAST

BOTTOM HOLE

LAT: 40.47117°N
LONG: 104.44917°W

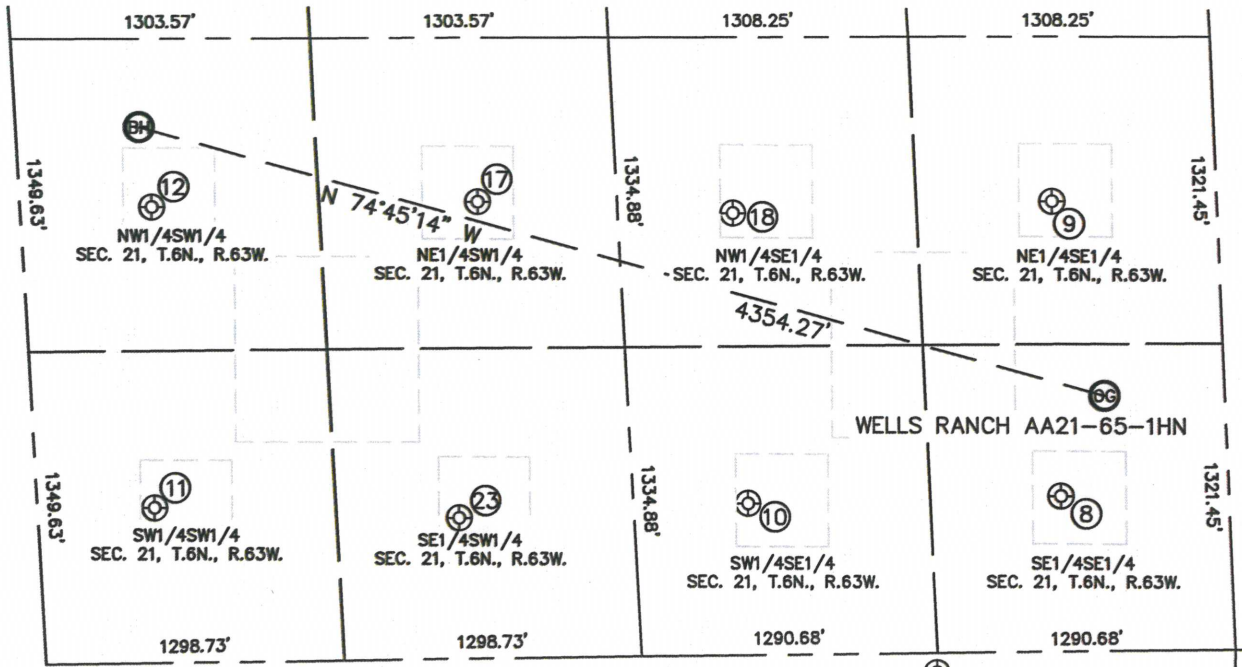


Brian T. Brinkman—On behalf of Lat40°, Inc.
Colorado Licensed Professional Land Surveyor No. 38175
DATE: 11/02/2012
PROJECT#: 2012141

SITE SKETCH

WELLS RANCH AA21-65-1HN

SECTION: 21
TOWNSHIP: 6N
RANGE: 63W



⑧

WELLS RANCH AA21-26
SE1/4SE1/4
669' FSL
725' FEL
LAT-40.46670°N
LONG-104.43482°W
PDOP:1.6
ELEV: 4733'

⑨

WELLS RANCH AA21-9
NE1/4SE1/4
1939' FSL
711' FEL
LAT-40.47019°N
LONG-104.43487°W
PDOP:1.6
ELEV: 4724'

⑩

WELLS RANCH AA21-15
SW1/4SE1/4
654' FSL
2090' FEL
LAT-40.46665°N
LONG-104.43972°W
PDOP:1.8
ELEV: 4732'

⑪

WELLS RANCH AA21-13
SW1/4SW1/4
669' FSL
509' FWL
LAT-40.46666°N
LONG-104.44903°W
PDOP:1.8
ELEV: 4701'

⑫

WELLS RANCH AA21-12
NW1/4SW1/4
1965' FSL
571' FWL
LAT-40.47022°N
LONG-104.44899°W
PDOP:1.8
ELEV: 4681'

⑬

WELLS RANCH AA21-11
NE1/4SW1/4
1967' FSL
1992' FWL
LAT-40.47024°N
LONG-104.44388°W
PDOP:2.1
ELEV: 4703'

⑭

WELLS RANCH AA21-10
NW1/4SE1/4
1905' FSL
2104' FEL
LAT-40.47008°N
LONG-104.43988°W
PDOP:1.9
ELEV: 4708'

⑮

WELLS RANCH AA21-14
SE1/4SW1/4
607' FSL
1834' FWL
LAT-40.46651°N
LONG-104.44426°W
PDOP:1.3
ELEV: 4718'

