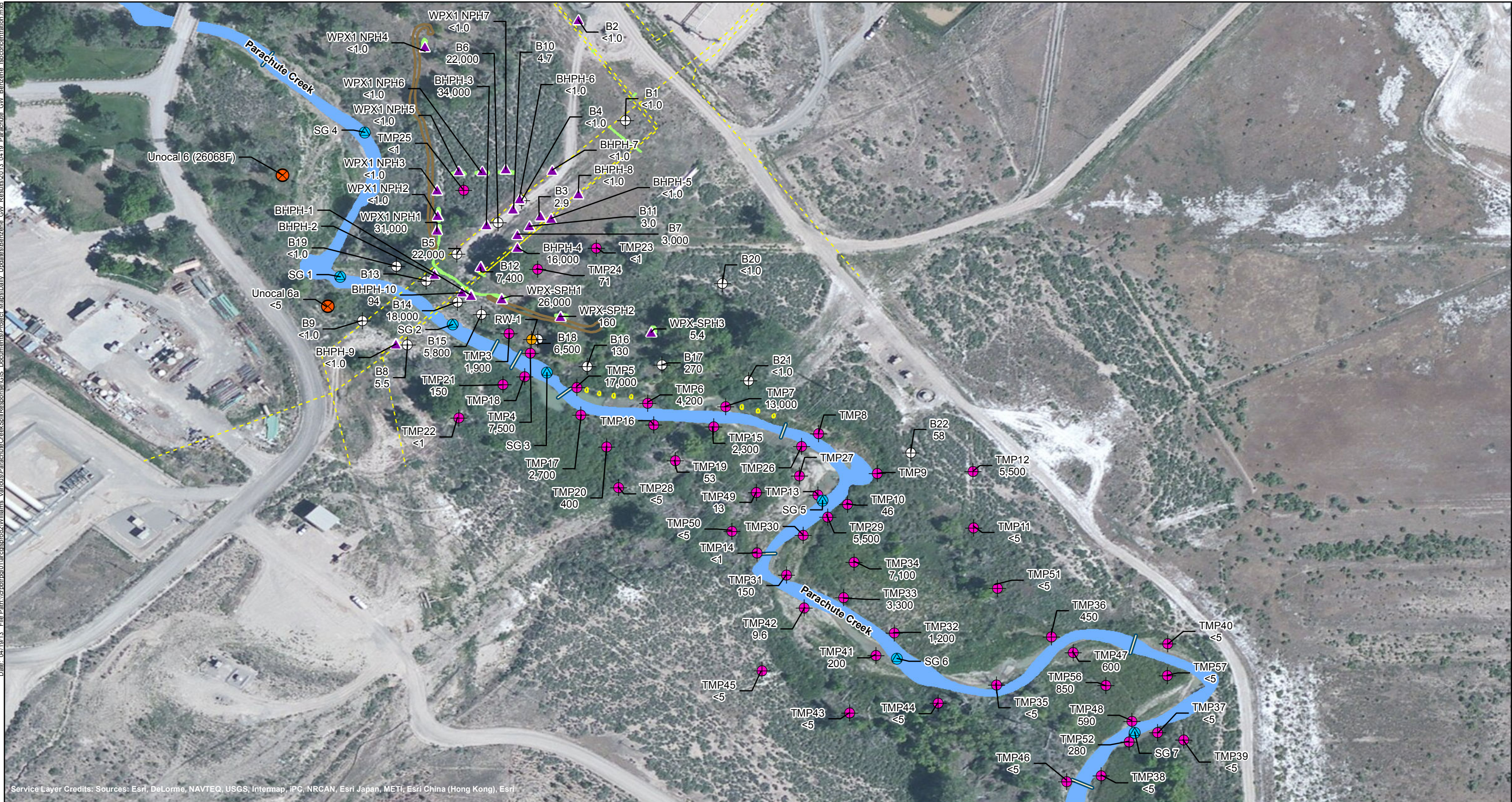


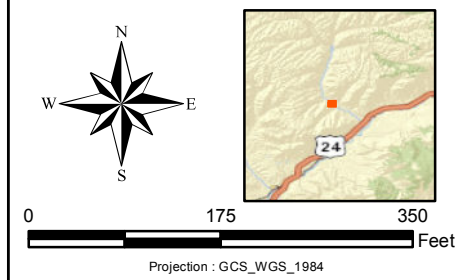
Date: 04/19/13 File Path: \\cbrtrd01\arcgispro2\Williams_Various\ParachuteCreekSpillResponse\GIS_Documents\Project_Maps\Daily_Updates\Benzene_GW_Results\2013_0419_Parachute_GW_Benzene_Isoconcentration.mxd



Service Layer Credits: Sources: Esri, DeLorme, NAVTEQ, USGS, Intermap, IPC, NRCAN, Esri Japan, METI, Esri China (Hong Kong), Esri

- | | | | |
|-------------------------------------|----------|-------------------|--|
| Recovery/Test Trench | Berm | Staff Gauge | Monitoring Well |
| Approximate Location of Mini-Trench | Boom | Water Supply Well | Temporary Monitoring Well Point |
| Parachute Creek | Pipeline | Recovery Well | Other Fluid Level Gauging Location (Trench, Pothole, Temporary Boring) |

Notes:
1) Benzene results reported in µg/L (micrograms per liter)



BARGATH LLC PARACHUTE CREEK GAS PLANT
COGCC INCIDENT NUMBER 2232359

**MOST RECENT BENZENE CONCENTRATIONS
IN GROUNDWATER AND
ISOCONCENTRATION MAP - 04/19/2013**
--WORKING DRAFT, SUBJECT TO ADDITIONAL DATA COLLECTION--

Shaw Environmental, Inc.
(A CBI Company)
9201 E. Dry Creek Rd.
Centennial, CO 80112