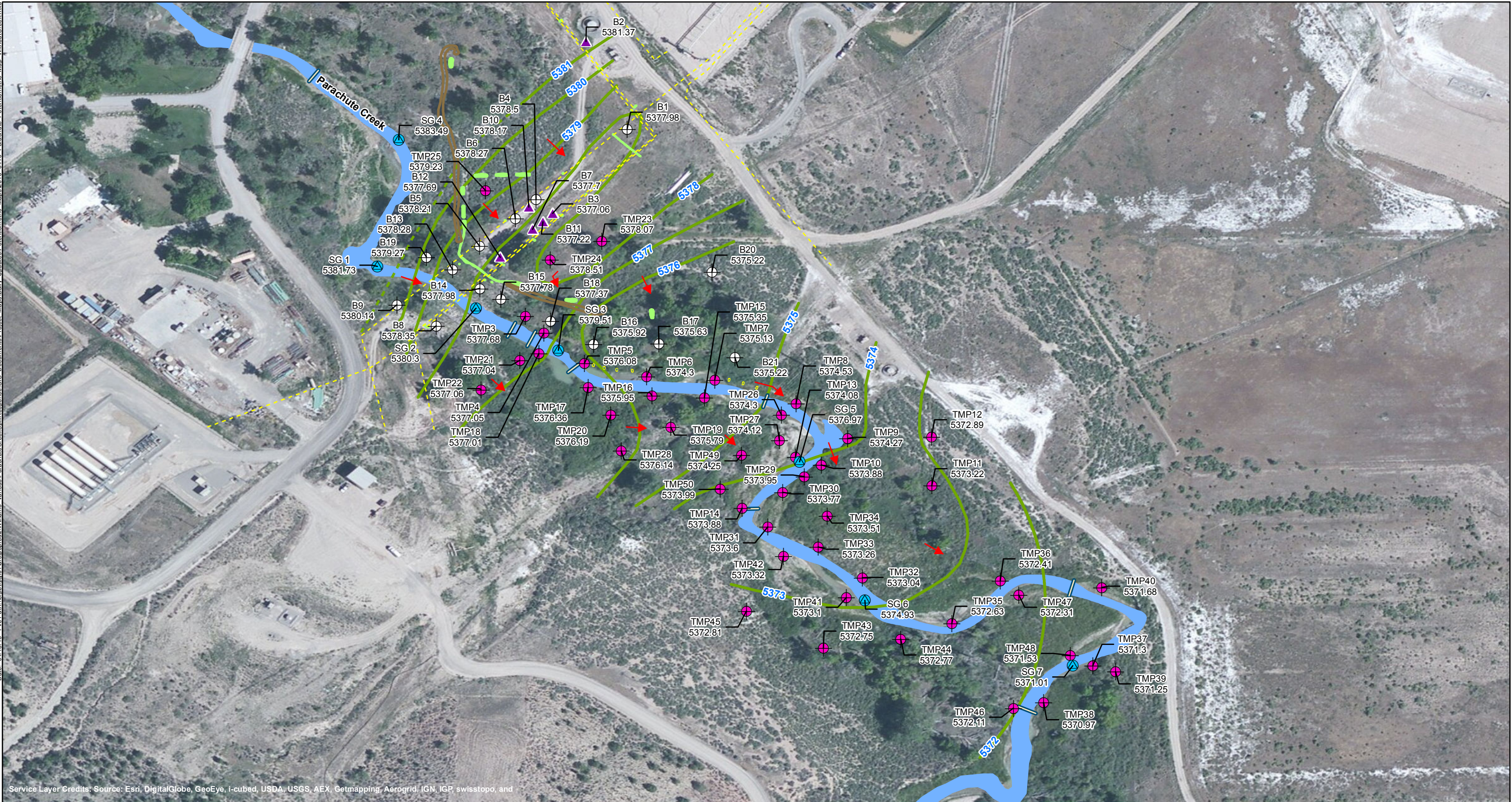


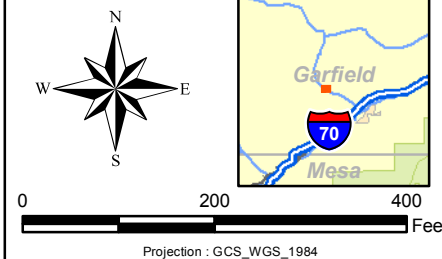
Date: 04/18/13 File Path: \\p130101\arcgispro\2\Williams_Various\ParachuteCreek\GIS\Documents\Project_Maps\Daily_Updates\Potentiometric_Maps\2013_0416_Parachute_Potentiometric_Map_WithoutCreek.mxd



- | | | |
|-------------------------------------|----------|-----------------------------------------------|
| Recovery/Test Trench | Berm | Groundwater Contour (Without Creek Influence) |
| Approximate Location of Mini-Trench | Boom | Inferred Groundwater Contour |
| Parachute Creek | Pipeline | Groundwater Flow Direction |

- | | |
|-----------------|------------------------------------------------------------------------|
| Staff Gauge | Temporary Monitoring Well Point |
| Monitoring Well | Other Fluid Level Gauging Location (Trench, Pothole, Temporary Boring) |

Notes:
1) Elevations shown for SG 1 thru SG 7 are surface water elevations and were measured on 4/16/2013.
2) Groundwater levels were measured on 4/16/2013.



BARGATH LLC PARACHUTE CREEK GAS PLANT COGCC INCIDENT NUMBER 2232359	
POTENTIOMETRIC SURFACE MAP 04/16/2013 --WORKING DRAFT, SUBJECT TO ADDITIONAL DATA COLLECTION--	
	Shaw Environmental, Inc. (A CBI Company) 9201 E. Dry Creek Rd. Centennial, CO 80112