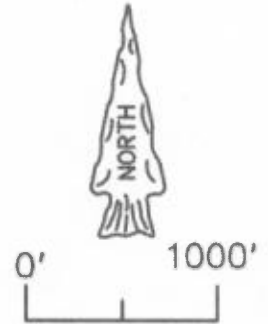
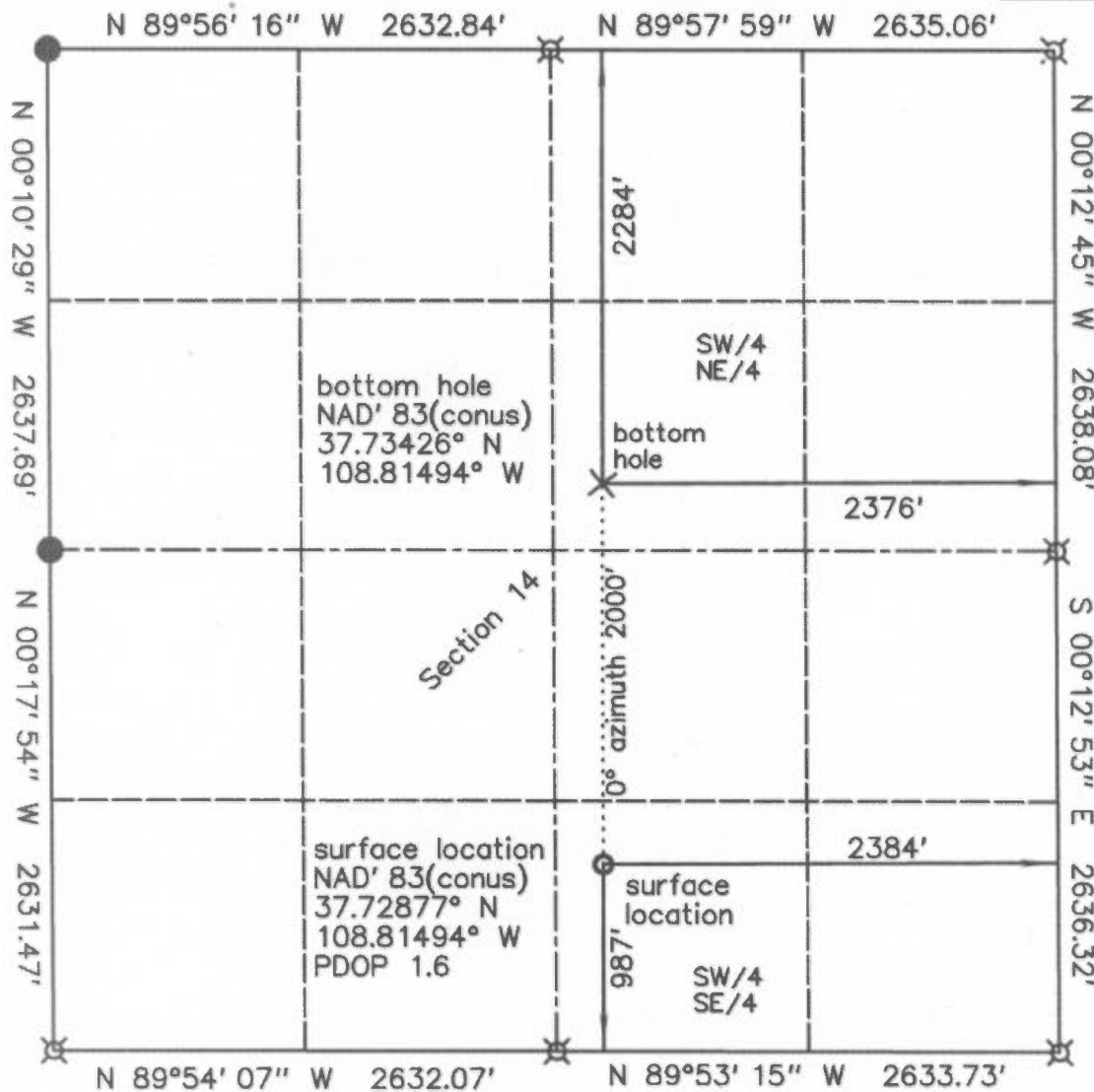


WELL LOCATION PLAT



Scale: 1" = 1000'

Basis of bearing is assumed from GPS True North, as shown.

- ⌵ standard GLO/BLM monument
- set standard monument
- * from GLO/BLM
- ** calculated

KINDER MORGAN CO2 COMPANY, LP
 Doe Canyon # 14
 987' FSL & 2384' FEL - surface location
 Section 14, T.40 N., R.18 W., NMPM
 Dolores County, CO
 7104.7' grd. el. NAVD '88 (from OPUS)
 2284' FNL & 2376' FEL - bottom hole
 Section 14, T.40 N., R.18 W., NMPM

Notes:

- 1) Distances/dimensions are perpendicular to section/aliquot lines.
- 2) Surface use is Fee, dryland crop.
- 3) GPS was corrected by OPUS, instrument operator was R.J. Caffey, CO LS 36562.
- 4) There are no improvements within 500 feet of well bore, except fence on property line.



KNOW ALL MEN BY THESE PRESENTS that I, GERALD G. HUDDLESTON, do hereby certify that this plat was prepared from field notes of an actual survey made by me or under my supervision and that the same is true and accurate to the best of my knowledge and belief.

date of survey : 03/22/2013
 date of plat : 03/27/2013