

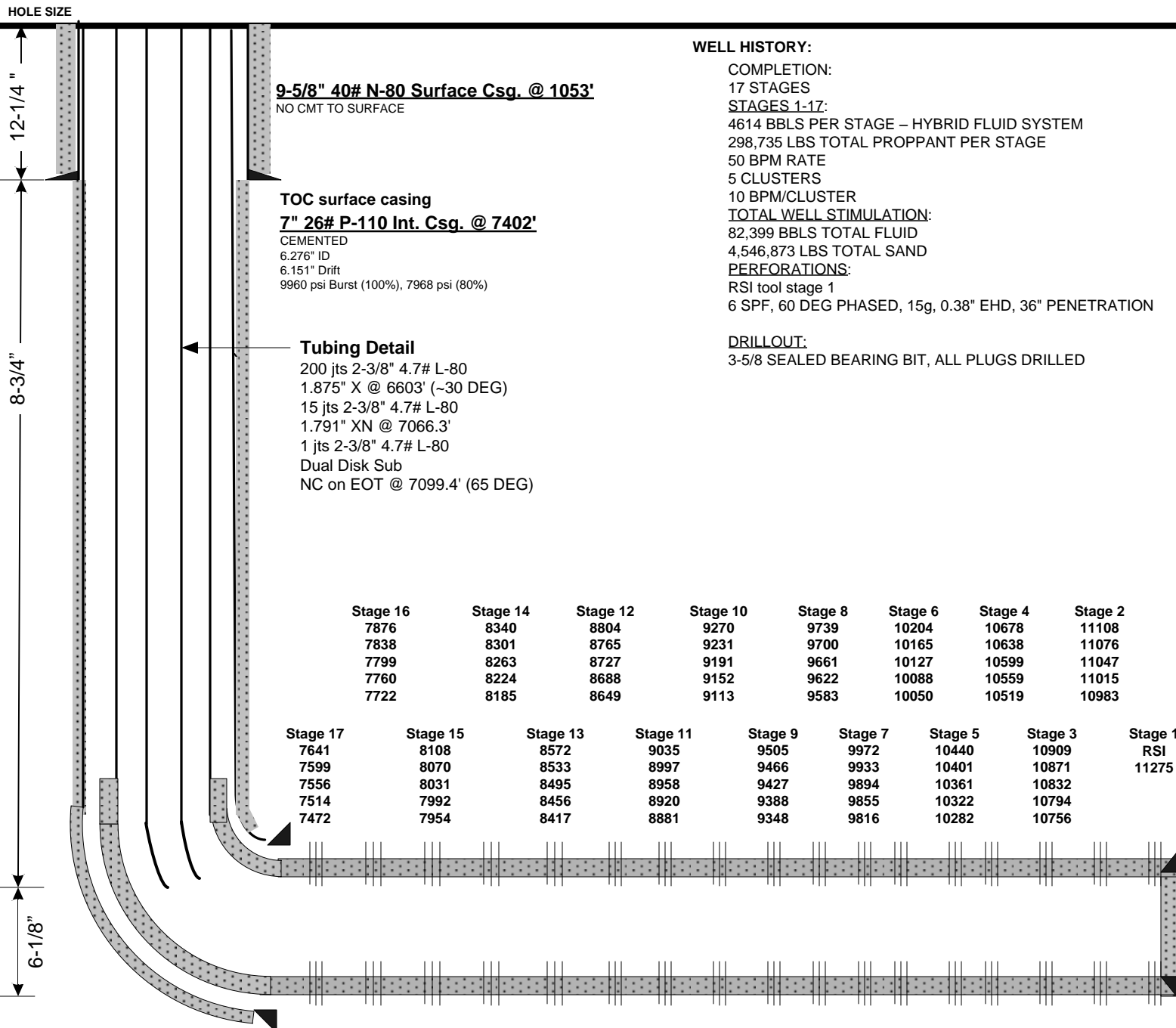
Current Wellbore Schematic

EnCana Oil & Gas (USA) Inc.



WELL : Flanigan 2A-6H – Cemented Perf/Plug
 LOCATION : Lat: 40.08674 Long: -104.59936
 COUNTY : WELD STATE: CO
 FIELD : Wattenburg - NIOBRARA
 ELEVATION : 4936' (GL) 4949' (KB) Δ 13'

SPUD DATE: 7/11/12
 COMPL. DATE: 9/15/12
 API #: 05-123-3569



WELL HISTORY:

COMPLETION:

17 STAGES

STAGES 1-17:

4614 BBLs PER STAGE – HYBRID FLUID SYSTEM

298,735 LBS TOTAL PROPPANT PER STAGE

50 BPM RATE

5 CLUSTERS

10 BPM/CLUSTER

TOTAL WELL STIMULATION:

82,399 BBLs TOTAL FLUID

4,546,873 LBS TOTAL SAND

PERFORATIONS:

RSI tool stage 1

6 SPF, 60 DEG PHASED, 15g, 0.38" EHD, 36" PENETRATION

DRILLOUT:

3-5/8 SEALED BEARING BIT, ALL PLUGS DRILLED

Directional Data

KOP: 6243'

30°: 6600'

60°: 7020'

80°: 7370'

90°: 8180'

Max DLS: 11.92°/100' @ 6985' MD

Lateral Length: 3916' (Int. Shoe-TD)

4-1/2" 13.5# P-110 DQX Prod. Csg @ 11,325'

CEMENTED

3.920" ID

3.795" Drift

12,410 psi Burst (100%), 9928 psi (80%)

MD: 11,325'

PBTD (FC): 11,320'

TVD: ~7074'

BHT: 240 F