

ENCANA OIL & GAS (USA) INC. - EBUS
DO NOT MAIL-3601 N STAGECOACH RD
LONGMONT, Colorado

Flanigan
Flanigan 2A-6H

Ensign/135

Post Job Summary

Cement Production Casing

Date Prepared: 07/25/2012
Version: 1

Service Supervisor: FANTASIA, JOSEPH

Submitted by: MCKAY, ADAM

HALLIBURTON

HALLIBURTON

Wellbore Geometry

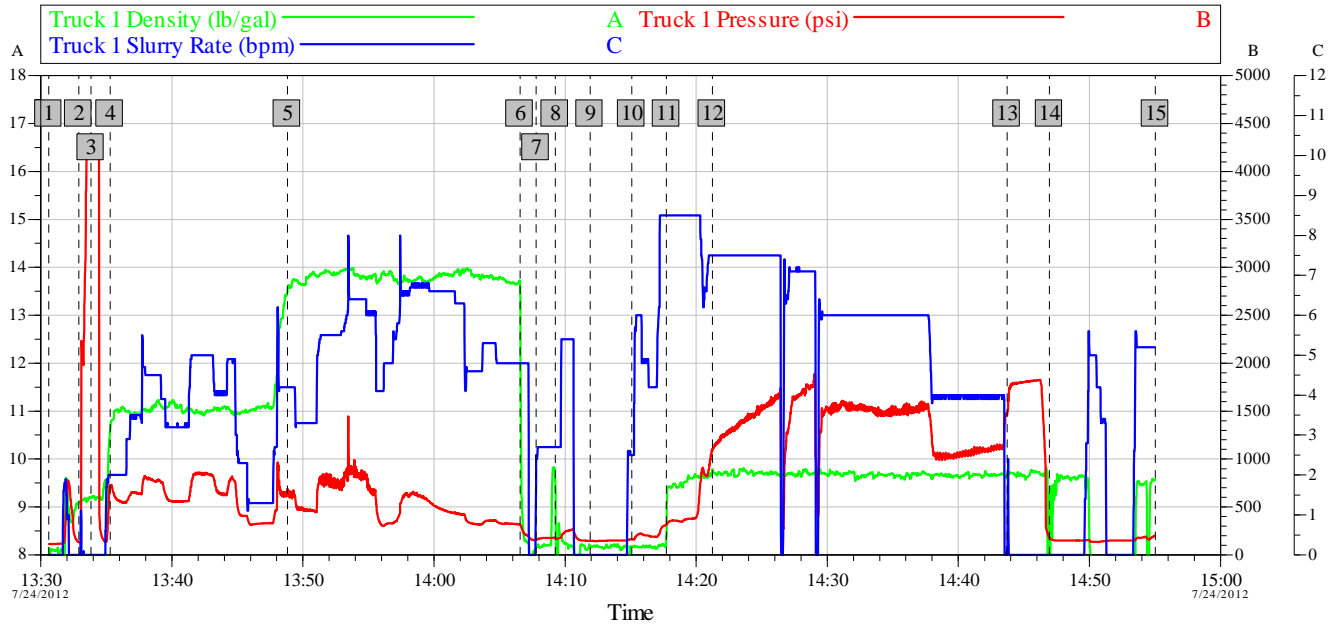
Job Tubulars					MD		TVD		Excess %	Shoe Joint Length ft
Type	Description	Size in	ID in	Wt lbm/ft	Top ft	Bottom ft	Top ft	Bottom ft		
Casing	Production Casing	4.50	4.000	11.60	0.00	11,325.00	0.00	11,325.00		
Open Hole Section	Open Hole Section		6.125		7,402.00	11,325.00	7,358.00	11,495.00		
Casing	Intermediate Casing	7.00	6.276	26.00	0.00	7,402.00	0.00	7,358.00		

Pumping Schedule

Stage /Plug #	Fluid #	Fluid Type	Fluid Name	Surface Density lbm/gal	Avg Rate bbl/min	Surface Volume	Downhole Volume
1	1	Spacer	TUNED SPACER III	11.00	4.00	40.0 bbl	40.0 bbl
1	2	Cement Slurry	EXPANDACEM B2	13.80	5.00	300.0 sacks	300.0 sacks
1	3	Spacer	ClayWeb III	8.34	6.00	-	-

Data Acquisition

Production



Global Event Log

1 Starting Job	13:30:37	2 Start Job	13:32:54	3 Test Lines	13:33:50
4 Pump Tuned Spacer	13:35:18	5 Pump Cement	13:48:49	6 Pump Retarder	14:06:34
7 Shutdown	14:07:47	8 Clean Lines	14:09:15	9 Drop Top Plug	14:11:54
10 Pump Retarder	14:15:05	11 Pump Displacement	14:17:44	12 Displ Reached Cmmt	14:21:15
13 Bump Plug	14:43:43	14 End Job	14:46:57	15 Ending Job	14:55:02

Customer:	Job Date: 24-Jul-2012	Sales Order #: 9689084
Well Description:	UWI:	

OptiCem v6.4.10
24-Jul-12 15:24

Service Supervisor Reports

Job Log

Date/Time	Chart #	Activity Code	Pump Rate	Cum Vol	Pump		Pressure (psig)	Comments
07/24/2012 09:00		Arrive at Location from Service Center						
07/24/2012 09:15		Assessment Of Location Safety Meeting						
07/24/2012 13:30		Start Job						
07/24/2012 13:33		Test Lines						PRESSURE TEST LINES TO 3500 PSI
07/24/2012 13:35		Pump Spacer 1	5	40			650.0	40 BBLS TUNED SPACER MIXED AT 11 PPG USING SUPPLIED WATER
07/24/2012 13:48		Pump Cement	6	89			889.0	300 SKS EXPANDACEM MIXED AT 13.8 PPG USING SUPPLIED WATER
07/24/2012 14:06		Pump Spacer 1	6	3			236.0	3 BBLS WATER WITH MICROMATRIX CEMENT RETARDER ADDED
07/24/2012 14:07		Shutdown						
07/24/2012 14:09		Clean Lines						
07/24/2012 14:11		Drop Top Plug						3RD PARTY DART DROPPED ON SHUTDOWN
07/24/2012 14:15		Pump Spacer 1	5	3			210.0	3 BBLS WATER WITH MICROMATRIX CEMENT RETARDER ADDED
07/24/2012 14:17		Pump Displacement	8	167			346.0	GOOD RETURNS THROUGHOUT
07/24/2012 14:43		Bump Plug	3				1140.0	PLUG LANDED AT 1140 PSI AND BROUGHT TO 1800 PSI HELD FOR 3 MIN
07/24/2012 14:45		Check Floats						FLOATS HELD
07/24/2012 14:50		End Job						

HALLIBURTON

The Road to Excellence Starts with Safety

Sold To #: 340078		Ship To #: 2939420		Quote #:		Sales Order #: 9689084	
Customer: ENCANA OIL & GAS (USA) INC. - EBUS				Customer Rep: Elrod, Dennis			
Well Name: Flanigan			Well #: 2A-6H			API/UWI #: 05-123-35694	
Field: WARRENERG		City (SAP): HUDSON		County/Parish: Weld		State: Colorado	
Contractor: Ensign			Rig/Platform Name/Num: 135				
Job Purpose: Cement Production Casing							
Well Type: Development Well			Job Type: Cement Production Casing				
Sales Person: AARON, WESLEY			Srv Supervisor: FANTASIA, JOSEPH			MBU ID Emp #: 485445	

Job Personnel

HES Emp Name	Exp Hrs	Emp #	HES Emp Name	Exp Hrs	Emp #	HES Emp Name	Exp Hrs	Emp #
BULINSKI, MATTHEW J	7.0	483865	CHISLUM, DENNIS	7.0	512130	FANTASIA, JOSEPH Brandon	7.0	485445
SANSONI, NICHOLAS Sterling J	7.0	502962						

Equipment

HES Unit #	Distance-1 way	HES Unit #	Distance-1 way	HES Unit #	Distance-1 way	HES Unit #	Distance-1 way
10822531C	20 mile	11019824	20 mile	11142998	20 mile	11410470C	20 mile
11633848	20 mile						

Job Hours

Date	On Location Hours	Operating Hours	Date	On Location Hours	Operating Hours	Date	On Location Hours	Operating Hours

TOTAL Total is the sum of each column separately

Job

Formation Name	Formation Depth (MD)	Top	Bottom	Form Type	Job depth MD	Job Depth TVD	Water Depth	Perforation Depth (MD)	From	To
				BHST	11325. ft	11325. ft				

Job Times

Date	Time	Time Zone
24 - Jul - 2012	06:00	MST
24 - Jul - 2012	09:00	MST
24 - Jul - 2012	13:30	MST
24 - Jul - 2012	14:45	MST
24 - Jul - 2012	16:00	MST

Well Data

Description	New / Used	Max pressure psig	Size in	ID in	Weight lbm/ft	Thread	Grade	Top MD ft	Bottom MD ft	Top TVD ft	Bottom TVD ft
Open Hole Section				6.125				7402.	11325.	7358.	11495.
Intermediate Casing	Unknown		7.	6.276	26.			.	7402.	.	7358.
Production Casing	Unknown		4.5	4.	11.6			.	11325.	.	11325.

Tools and Accessories

Type	Size	Qty	Make	Depth	Type	Size	Qty	Make	Depth	Type	Size	Qty	Make
Guide Shoe					Packer					Top Plug			
Float Shoe					Bridge Plug					Bottom Plug			
Float Collar					Retainer					SSR plug set			
Insert Float										Plug Container			
Stage Tool										Centralizers			

Miscellaneous Materials

Gelling Agt	Conc	Surfactant	Conc	Acid Type	Qty	Conc	%
Treatment Fld	Conc	Inhibitor	Conc	Sand Type	Size	Qty	

HALLIBURTON

Fluid Data										
Stage/Plug #: 1										
Fluid #	Stage Type	Fluid Name	Qty	Qty uom	Mixing Density lbm/gal	Yield ft3/sk	Mix Fluid Gal/sk	Rate bbl/min	Total Mix Fluid Gal/sk	
1	TUNED SPACER III	TUNED SPACER III - SBM (483826)	40.00	bbl	11.	6.74	42.3	4.0		
		30.27 lbm/bbl	BARITE, 100 LB SK (100003680)							
		39.07 gal/bbl	FRESH WATER							
2	EXPANDACEM B2	EXPANDACEM (TM) SYSTEM (452979)	300.0	sacks	13.8	1.68	7.75	4.0	7.75	
		7.75 Gal	FRESH WATER							
3	ClayWeb III		20.00	bbl	8.34	.0	.0	.0		
		0.2 gal/Mgal	CLA-WEB - TOTE (101985045)							
Calculated Values		Pressures		Volumes						
Displacement		Shut In: Instant		Lost Returns		Cement Slurry		Pad		
Top Of Cement		5 Min		Cement Returns		Actual Displacement		Treatment		
Frac Gradient		15 Min		Spacers		Load and Breakdown		Total Job		
Rates										
Circulating		Mixing		Displacement		Avg. Job				
Cement Left In Pipe		Amount	0 ft	Reason	Shoe Joint					
Frac Ring # 1 @	ID	Frac ring # 2 @	ID	Frac Ring # 3 @	ID	Frac Ring # 4 @	ID			
The Information Stated Herein Is Correct				Customer Representative Signature						