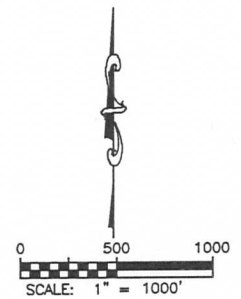
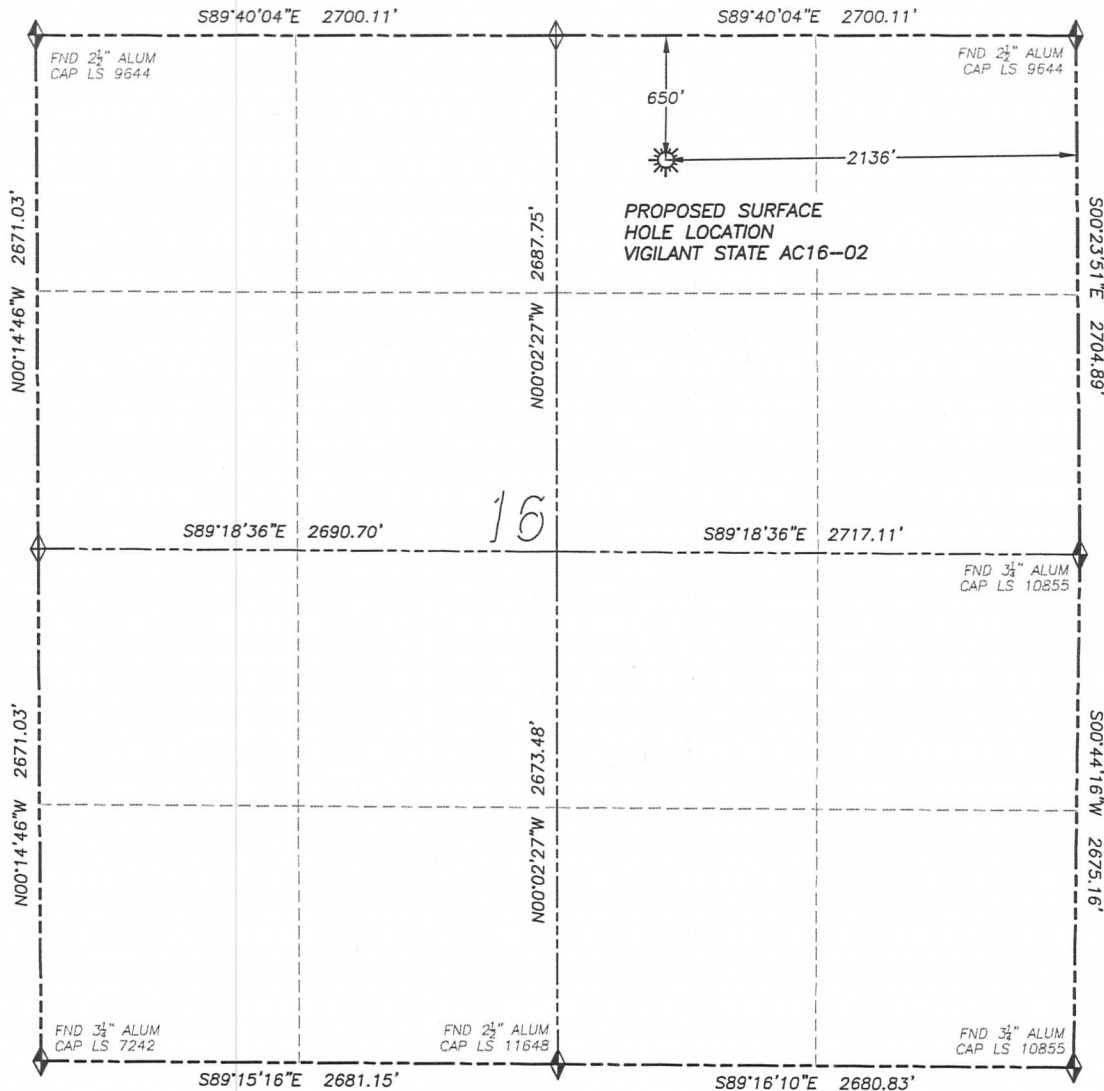


WELL LOCATION CERTIFICATE

VIGILANT STATE AC16-02

SECTION 16, TOWNSHIP 7 NORTH, RANGE 63 WEST OF THE 6TH PRINCIPAL MERIDIAN

**LEGEND**

- FOUND MONUMENT AS DESCRIBED
- PROPOSED WELL
- EXISTING WELL
- BOTTOM HOLE
- ABANDONED WELL
- CALCULATED POSITION

NAD 83 LATITUDE AND LONGITUDE

VIGILANT STATE AC16-02

SURFACE HOLE:

LATITUDE: N40.57965°

LONGITUDE: W104.43961°

ELEVATION: 4874'

FOOTAGE: 650' FNL, 2136' FEL

PDOP: 1.1

QTR/QTR: NW4/NE4

PROP LINE: 650' ± NORTH

IN ACCORDANCE WITH A REQUEST FROM GREG WILSON OF NOBLE ENERGY INC., DALEY LAND SURVEYING, INC. HAS DETERMINED THE SURFACE LOCATION OF THE VIGILANT STATE AC16-02 WELL TO BE 650' FNL, 2136' FEL, AS MEASURED AT NINETY (90) DEGREES FROM THE SECTION LINES OF SECTION 16, TOWNSHIP 7 NORTH, RANGE 63 WEST OF THE 6TH PRINCIPAL MERIDIAN, WELD COUNTY, COLORADO.

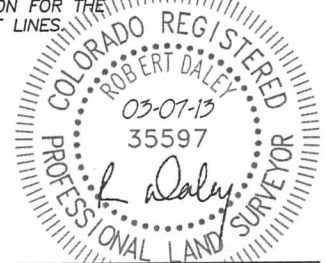
I HEREBY CERTIFY THAT THIS WELL LOCATION CERTIFICATE WAS PREPARED BY ME OR UNDER MY DIRECT SUPERVISION, THAT THE WORK WAS COMPLETED ON 2/14/2013 FOR AND ON BEHALF OF NOBLE ENERGY, INC., AND THAT THIS MAP DOES NOT REPRESENT A BOUNDARY SURVEY, IT IS NOT A LAND SURVEY PLAT OR AN IMPROVEMENT SURVEY PLAT AND IT IS NOT TO BE RELIED UPON FOR THE ESTABLISHMENT OF FENCE, BUILDING OR OTHER FUTURE IMPROVEMENT LINES.

NOTES:

- 1) BEARINGS FOR THIS MAP ARE ASSUMED AND BASED UPON GPS OBSERVATIONS MADE BETWEEN MONUMENTS LOCATED AT THE NORTHEAST CORNER AND EAST QUARTER CORNER OF SECTION 16, T.7N., R.63W.
- 2) HORIZONTAL DATUM IS NAD83.
- 3) VERTICAL DATUM IS NAVD88 AND ORIGINATES FROM THE LOCAL C.O.R.S. NETWORK, UTILIZING THE GEOID09 MODEL.
- 4) SEE LOCATION DRAWING FOR VISIBLE IMPROVEMENTS WITHIN 400' OF PROPOSED DISTURBED AREA.
- 5) SURFACE USE: RANGELAND.

NEAREST EXISTING WELL:

THERE ARE NO EXISTING
WELLS IN THIS SECTION



FOR AND ON BEHALF OF
DALEY LAND SURVEYING INC.,
Robert Daley, PLS 35597

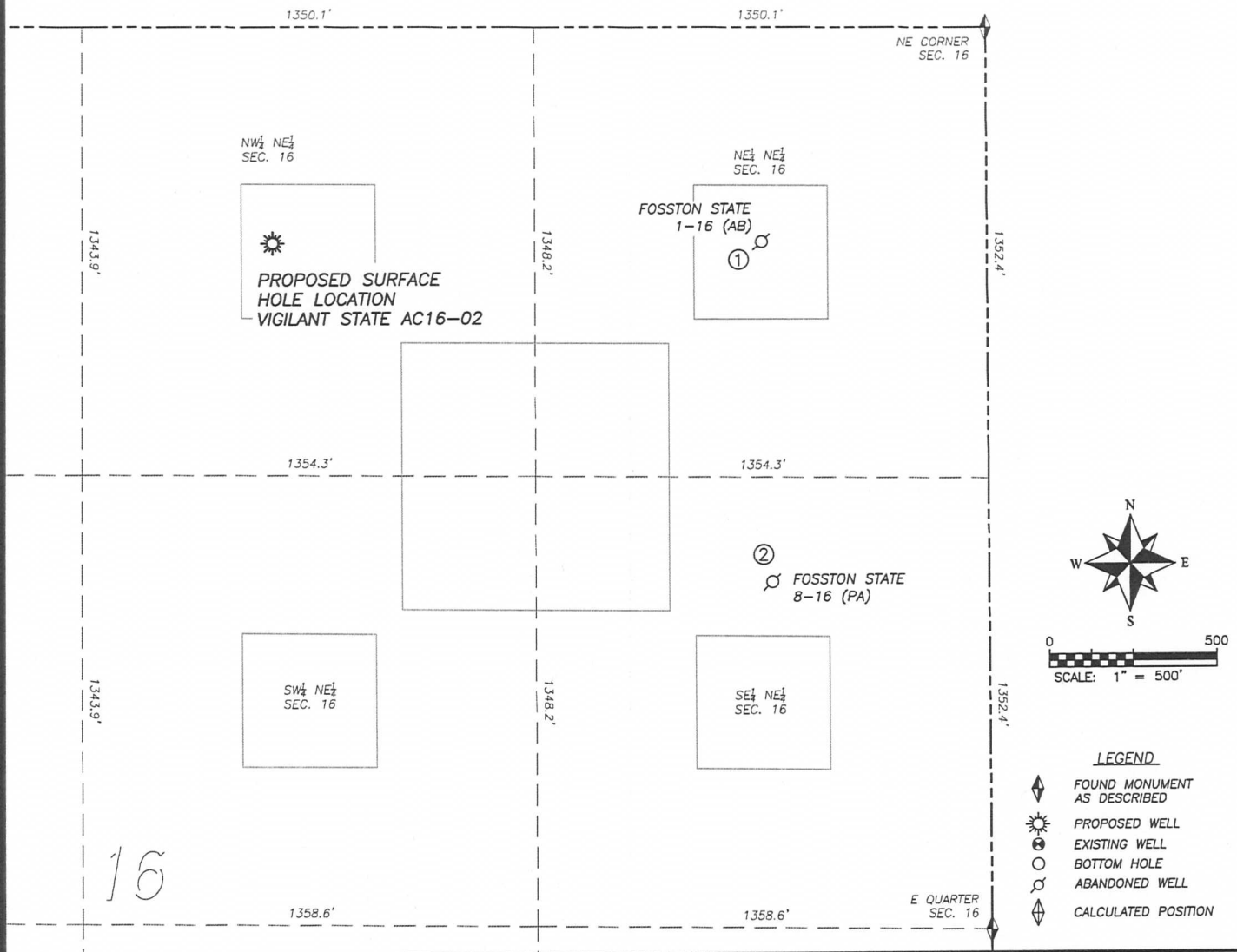
DALEY LAND SURVEYING, INC.

PARKER, CO. 80134

303 953 9841

SITE SKETCH VIGILANT STATE AC16-02

SECTION 16, TOWNSHIP 7 NORTH, RANGE 63 WEST OF THE 6TH PRINCIPAL MERIDIAN



	Well Name	Qtr - Qtr	Footage		Latitude	Longitude	Elevation	PDOP
1	FOSSTON STATE 1-16 (AB)	NE NE	645' FNL	675' FEL	40.57964	-104.43435	4866	1.1
2	FOSSTON STATE 8-16 (PA)	SE NE	1664' FNL	648' FEL	40.57685	-104.43423	4880	1.3

NOTES:

1. THIS DOES NOT REPRESENT A BOUNDARY SURVEY

2. HORIZONTAL DATUM IS NAD83

3. VERTICAL DATUM IS NAVD88 AND ORIGINATES FROM THE
LOCAL C.O.R.S. NETWORK, UTILIZING THE GEOID09 MODEL.