

LEGEND:

PROPOSED LOCATION

ConocoPhillips Company

CLINE #4-64-2-1H
SECTION 2, T4S, R64W, 6th P.M.
1996' FNL 265' FEL



Uintah Engineering & Land Surveying
85 South 200 East Vernal, Utah 84078
(435) 789-1017 * FAX (435) 789-1813

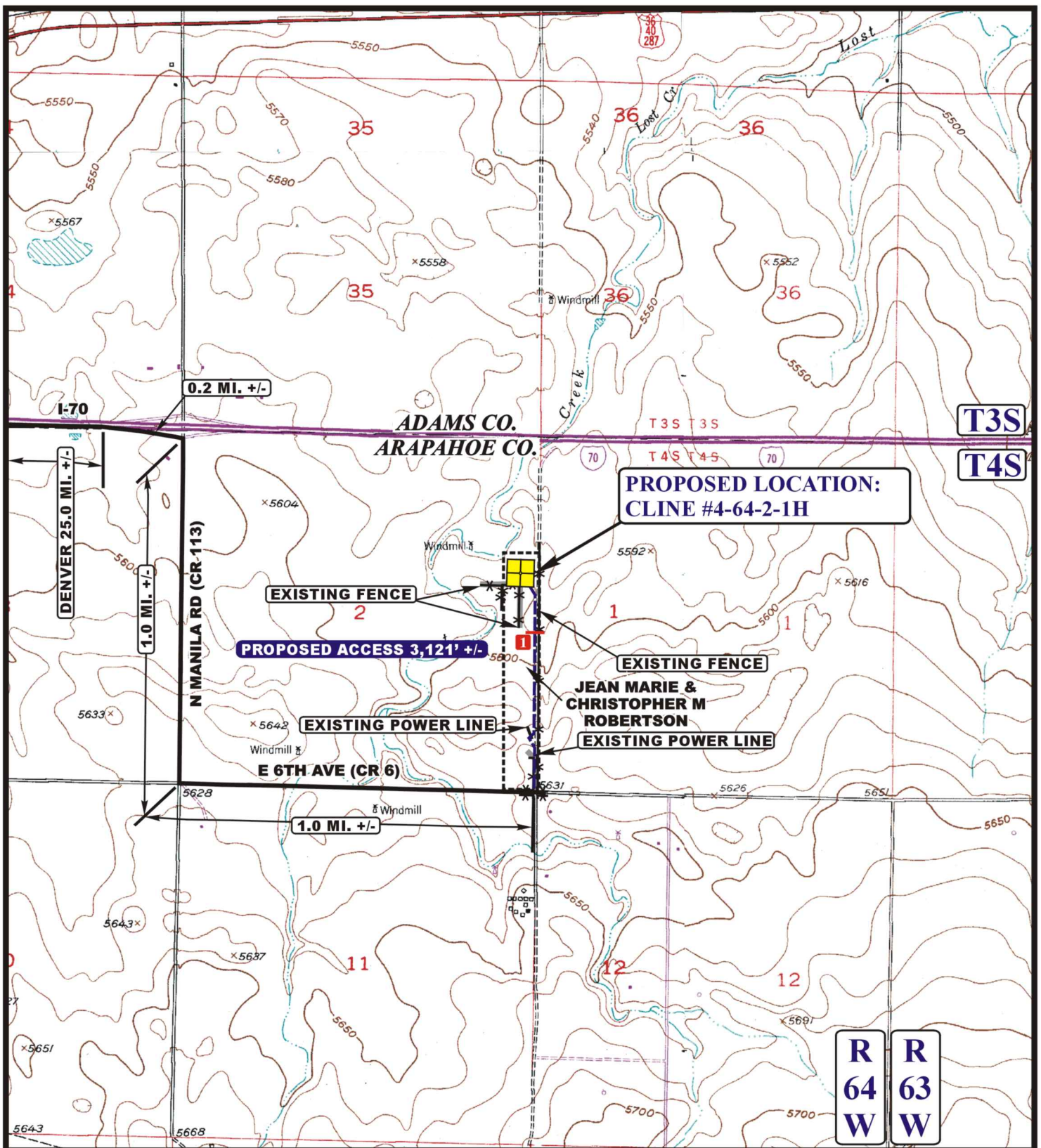


**ACCESS ROAD
MAP**

11 05 12
MONTH DAY YEAR



SCALE: 1:100,000 DRAWN BY: J.L.H. REVISED: 00-00-00



LEGEND:

- EXISTING ROAD
- PROPOSED ACCESS ROAD
- EXISTING POWER LINE
- EXISTING FENCE
- 18" CMP REQUIRED

ConocoPhillips Company

CLINE #4-64-2-1H
SECTION 2, T4S, R64W, 6th P.M.
1996' FNL 265' FEL



Uintah Engineering & Land Surveying
85 South 200 East Vernal, Utah 84078
(435) 789-1017 * FAX (435) 789-1813



ACCESS ROAD
MAP

11 05 12
MONTH DAY YEAR

SCALE: 1" = 2000' **DRAWN BY: J.L.H.** **REVISED: 00-00-00**

B
TOPO