

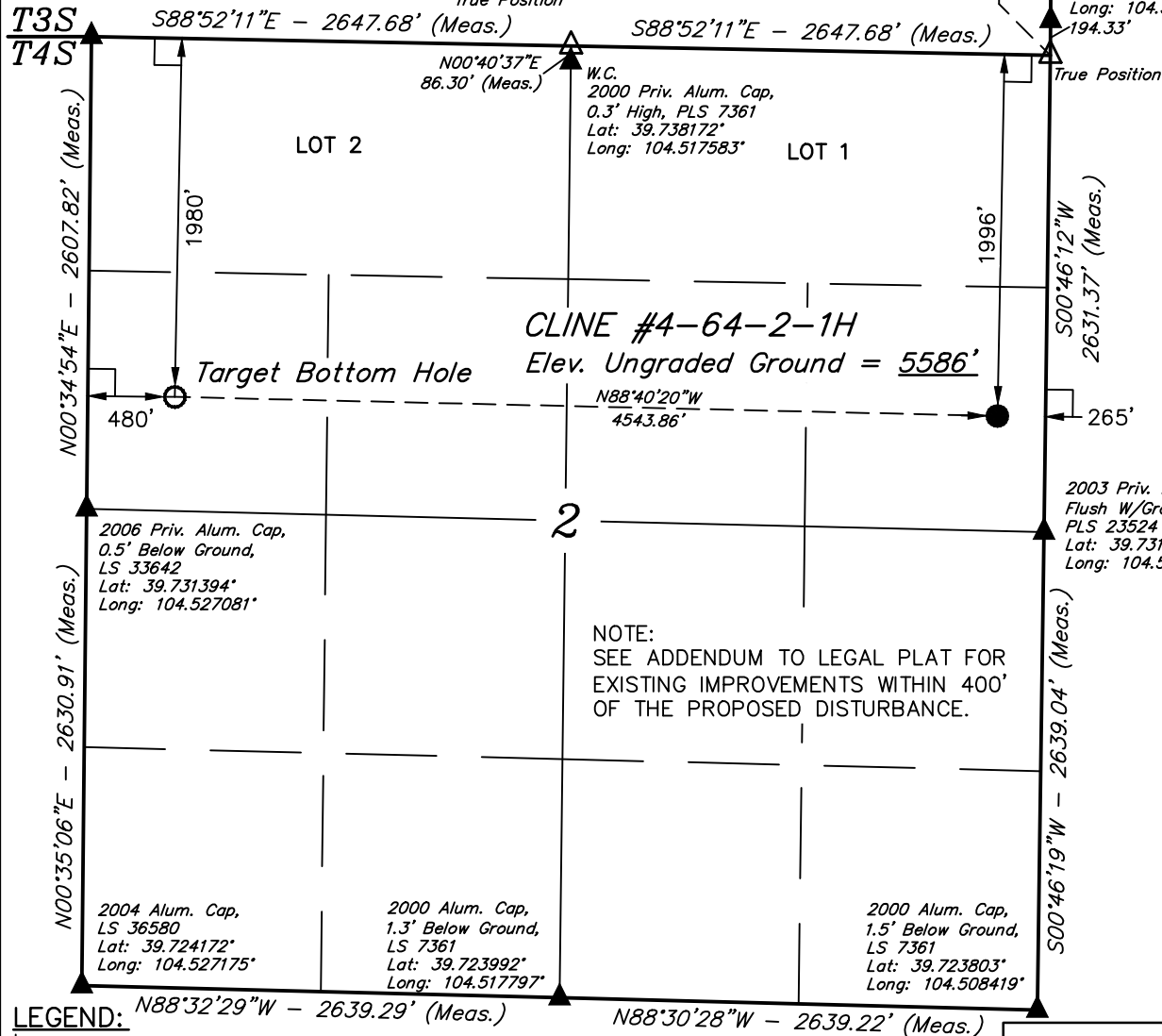
WELL LOCATION PLAT T4S, R64W, 6th P.M.

W 1/4 Cor. Sec. 36
1997 Priv. Alum. Cap.
1.5' Below Ground
Lat: 39.745547°
Long: 104.508100°

ConocoPhillips Company

Well location, CLINE #4-64-2-1H, located as shown in the SE 1/4 NE 1/4 of Section 2, T4S, R64W, 6th P.M., Arapahoe County, Colorado.

2004 Priv. Alum. Cap.
In Range Box,
PLS 36580
Lat: 39.738550°
Long: 104.526989°

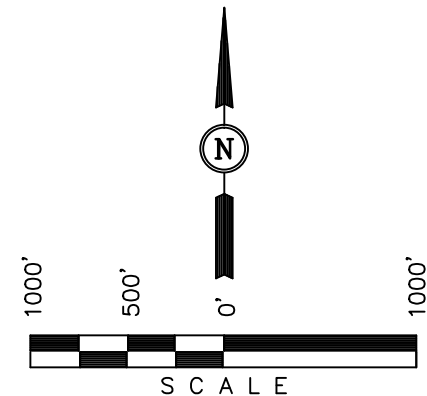


BASIS OF ELEVATION

BENCHMARK 374 LOCATED ON THE SECTION LINE BETWEEN SECTIONS 12 & 13, T5S, R64W, 6th. P.M., TAKEN FROM 1988 PUBLISHED DATUM BY THE UNITED STATES DEPARTMENT OF THE INTERIOR, GEOLOGICAL SURVEY AS BEING 6054.61 FEET.

BASIS OF BEARINGS

BASIS OF BEARINGS IS A G.P.S. OBSERVATION.



CERTIFICATE

THIS IS TO CERTIFY THAT THE ABOVE PLAT WAS PREPARED FROM FIELD NOTES OF ACTUAL SURVEYS MADE BY ME OR UNDER MY SUPERVISION AND THAT THE SAME ARE TRUE AND CORRECT TO THE BEST OF MY KNOWLEDGE AND BELIEF.

REGISTERED LAND SURVEYOR
REGISTRATION NO. 17492
STATE OF COLORADO

UINTAH ENGINEERING & LAND SURVEYING
85 SOUTH 200 EAST - VERNAL, UTAH 84078
(435) 789-1017

NAD 83 (TARGET BOTTOM HOLE)	NAD 83 (SURFACE LOCATION)
LATITUDE = 39°43'59.12" (39.733089)	LATITUDE = 39°43'58.09" (39.732803)
LONGITUDE = 104°31'31.27" (104.525353)	LONGITUDE = 104°30'33.14" (104.509206)
NAD 27 (TARGET BOTTOM HOLE)	NAD 27 (SURFACE LOCATION)
LATITUDE = 39°43'59.17" (39.733103)	LATITUDE = 39°43'58.14" (39.732817)
LONGITUDE = 104°31'29.40" (104.524833)	LONGITUDE = 104°30'31.27" (104.508686)

SCALE 1" = 1000'	DATE SURVEYED: 10-29-12	DATE DRAWN: 11-06-12
PARTY Z.B. A.G. J.M.H.	REFERENCES G.L.O. PLAT	
WEATHER COOL	FILE ConocoPhillips Company	

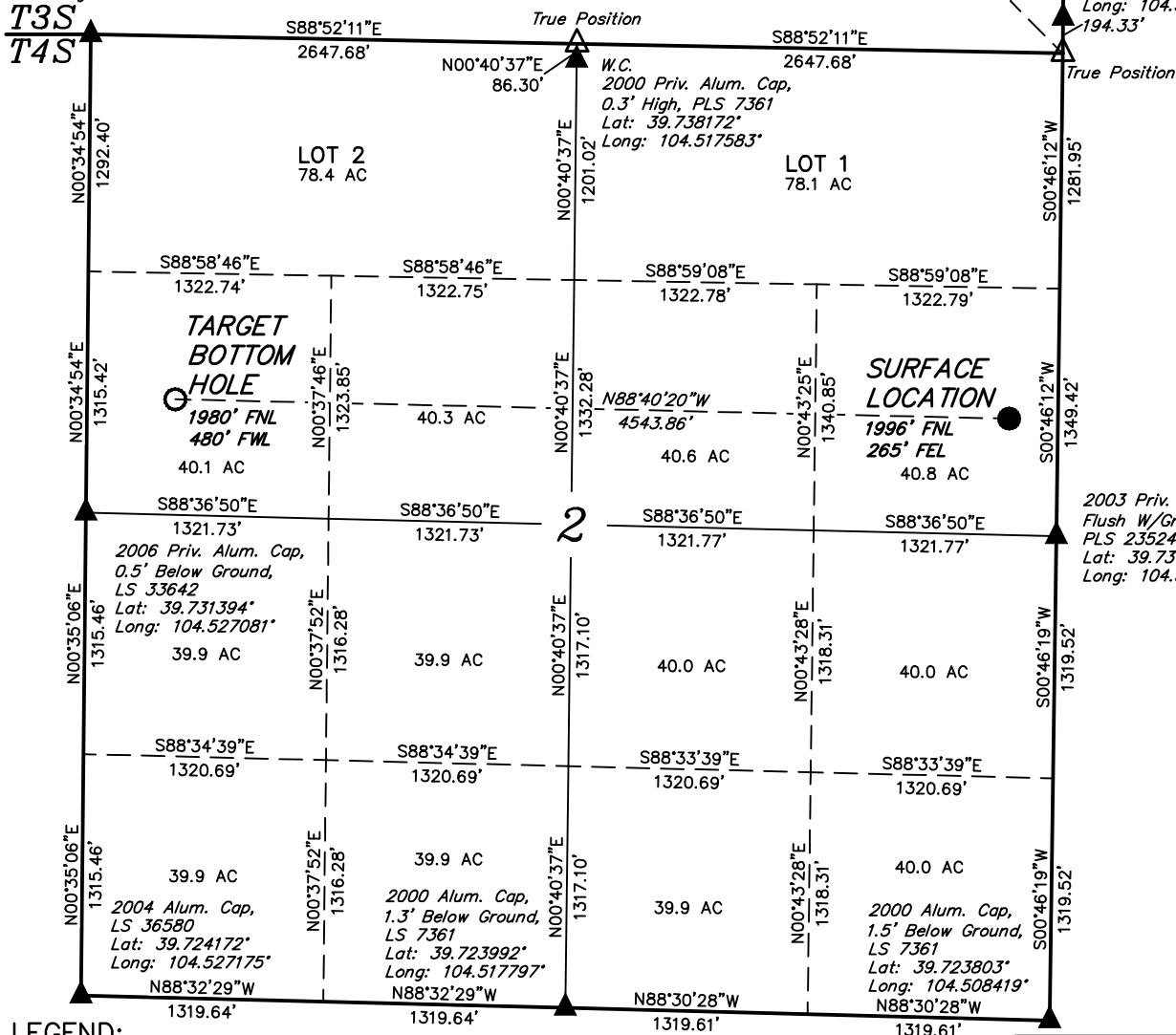
SECTION BREAKDOWN T4S, R64W, 6th P.M.

2004 Priv. Alum. Cap,
In Range Box,
PLS 36580
Lat: 39.738550°
Long: 104.526989°

W 1/4 Cor. Sec. 36
1997 Priv. Alum. Cap.,
1.5' Below Ground
Lat: 39.745547°
Long: 104.508100°

ConocoPhillips Company

Well location, CLINE #4-64-2-1H, located as shown in the SE 1/4 NE 1/4 of Section 2, T4S, R64W, 6th P.M., Arapahoe County, Colorado.

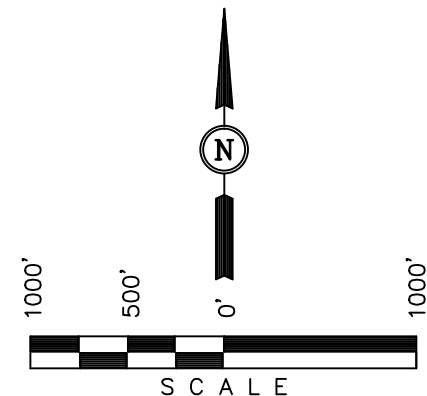


BASIS OF ELEVATION

BENCHMARK 374 LOCATED ON THE SECTION LINE BETWEEN SECTIONS 12 & 13, T5S, R64W, 6th. P.M., TAKEN FROM 1988 PUBLISHED DATUM BY THE UNITED STATES DEPARTMENT OF THE INTERIOR, GEOLOGICAL SURVEY AS BEING 6054.61 FEET.

BASIS OF BEARINGS

BASIS OF BEARINGS IS A G.P.S. OBSERVATION.



CERTIFICATE

THIS IS TO CERTIFY THAT THE ABOVE PLAT WAS PREPARED FROM FIELD NOTES OF ACTUAL SURVEYS MADE BY ME OR UNDER MY SUPERVISION AND THAT THE SAME ARE TRUE AND CORRECT TO THE BEST OF MY KNOWLEDGE AND BELIEF.

REGISTERED LAND SURVEYOR
REGISTRATION NO. 17492
STATE OF COLORADO

LEGEND:

- └─┘ = 90° SYMBOL
- = PROPOSED WELL HEAD.
- ▲ = SECTION CORNERS LOCATED.
- △ = SECTION CORNERS RE-ESTABLISHED. (Not Set on Ground.)

PDOP = 2.1

NAD 83 (TARGET BOTTOM HOLE)	NAD 83 (SURFACE LOCATION)
LATITUDE = 39°43'59.12" (39.733089)	LATITUDE = 39°43'58.09" (39.732803)
LONGITUDE = 104°31'31.27" (104.525353)	LONGITUDE = 104°30'33.14" (104.509206)
NAD 27 (TARGET BOTTOM HOLE)	NAD 27 (SURFACE LOCATION)
LATITUDE = 39°43'59.17" (39.733103)	LATITUDE = 39°43'58.14" (39.732817)
LONGITUDE = 104°31'29.40" (104.524833)	LONGITUDE = 104°30'31.27" (104.508686)

UINTAH ENGINEERING & LAND SURVEYING
85 SOUTH 200 EAST - VERNAL, UTAH 84078
(435) 789-1017

SCALE 1" = 1000'	DATE SURVEYED: 10-29-12	DATE DRAWN: 11-06-12
PARTY Z.B. A.G. J.M.H.	REFERENCES G.L.O. PLAT	
WEATHER COOL	FILE ConocoPhillips Company	