

---

**WPX ENERGY ROCKY MOUNTAIN LLC-EBUS**

---

**PA 343-5  
PARACHUTE  
Garfield County , Colorado**

**Cement Surface Casing**  
**28-Dec-2012**

**Post Job Report**

## The Road to Excellence Starts with Safety

Sold To #: 300721	Ship To #: 2967988	Quote #:	Sales Order #: 900056094
Customer: WPX ENERGY ROCKY MOUNTAIN LLC-EBUS	Customer Rep: Towers, Ron		
Well Name: PA	Well #: 343-5	API/UWI #: 05-045-20099	
Field: PARACHUTE	City (SAP): PARACHUTE	County/Parish: Garfield	State: Colorado
Lat: N 39.463 deg. OR N 39 deg. 27 min. 48.478 secs.	Long: W 108.007 deg. OR W -109 deg. 59 min. 35.167 secs.		
Contractor: NABORS 577	Rig/Platform Name/Num: NABORS 577		
Job Purpose: Cement Surface Casing			
Well Type: Development Well	Job Type: Cement Surface Casing		
Sales Person: MAYO, MARK	Srv Supervisor: ARNOLD, EDWARD	MBU ID Emp #: 439784	

## Job Personnel

HES Emp Name	Exp Hrs	Emp #	HES Emp Name	Exp Hrs	Emp #	HES Emp Name	Exp Hrs	Emp #
ARNOLD, EDWARD John	6.5	439784	ROSE, BENJAMIN Keith	6.5	487022	SALAZAR, PAUL Omar	6.5	445614
SINCLAIR, DAN J	6.5	338784						

## Equipment

HES Unit #	Distance-1 way	HES Unit #	Distance-1 way	HES Unit #	Distance-1 way	HES Unit #	Distance-1 way
10616651C	60 mile	11021972	60 mile	11027039	60 mile	11259882	60 mile
11808827	60 mile						

## Job Hours

Date	On Location Hours	Operating Hours	Date	On Location Hours	Operating Hours	Date	On Location Hours	Operating Hours
12-27-2012	4	1.5	12-28-2012	2.5				

TOTAL Total is the sum of each column separately

## Job

Formation Name	Formation Depth (MD)	Top	Bottom	Form Type	Job depth MD	Job Depth TVD	Water Depth	Perforation Depth (MD)	From	To	Called Out	Date	Time	Time Zone
				BHST	1215. ft	1215. ft						27 - Dec - 2012	16:00	MST
											On Location	27 - Dec - 2012	20:00	MST
											Job Started	28 - Dec - 2012	00:34	MST
											Job Completed	28 - Dec - 2012	01:31	MST
											Departed Loc	28 - Dec - 2012	02:30	MST

## Well Data

Description	New / Used	Max pressure psig	Size in	ID in	Weight lbm/ft	Thread	Grade	Top MD ft	Bottom MD ft	Top TVD ft	Bottom TVD ft
-------------	------------	-------------------	---------	-------	---------------	--------	-------	-----------	--------------	------------	---------------

Sales/Rental/3<sup>rd</sup> Party (HES)

Description	Qty	Qty uom	Depth	Supplier
PLUG,CMTG,TOP,9 5/8,HWE,8.16 MIN/9.06 MA	1	EA		

## Tools and Accessories

Type	Size	Qty	Make	Depth	Type	Size	Qty	Make	Depth	Type	Size	Qty	Make
Guide Shoe					Packer					Top Plug	9.625	1	HES
Float Shoe					Bridge Plug					Bottom Plug			
Float Collar					Retainer					SSR plug set			
Insert Float										Plug Container	9.625	1	HES
Stage Tool										Centralizers			

## Miscellaneous Materials

Gelling Agt	Conc	Surfactant	Conc	Acid Type	Qty	Conc	%
Treatment Fld	Conc	Inhibitor	Conc	Sand Type	Size	Qty	

## Fluid Data

Stage/Plug #: 1	Fluid #	Stage Type	Fluid Name	Qty	Qty uom	Mixing Density lbm/gal	Yield ft <sup>3</sup> /sk	Mix Fluid Gal/sk	Rate bbl/min	Total Mix Fluid Gal/sk
-----------------	---------	------------	------------	-----	---------	------------------------	---------------------------	------------------	--------------	------------------------

Stage/Plug #: 1									
Fluid #	Stage Type	Fluid Name	Qty	Qty uom	Mixing Density lbm/gal	Yield ft <sup>3</sup> /sk	Mix Fluid Gal/sk	Rate bbl/min	Total Mix Fluid Gal/sk
1	Water Spacer		20.00	bbl	8.33	.0	.0	4	
2	Lead Cement	VERSACEM (TM) SYSTEM (452010)	160.0	sacks	12.3	2.38	13.75	7.5	13.75
3	Tail Cement	VERSACEM (TM) SYSTEM (452010)	160.0	sacks	12.8	2.11	11.75	7.5	11.75
4	Displacement			bbl	8.33	.0	.0	10	
Calculated Values		Pressures		Volumes					
Displacement	92.5	Shut In: Instant		Lost Returns		Cement Slurry	127.9	Pad	
Top Of Cement	SURFACE	5 Min		Cement Returns	20	Actual Displacement	92.5	Treatment	
Frac Gradient		15 Min		Spacers	20	Load and Breakdown		Total Job	240.4
Rates									
Circulating	RIG	Mixing	7.5	Displacement	10	Avg. Job			9
Cement Left In Pipe	Amount	0 ft	Reason	Shoe Joint					
Frac Ring # 1 @	ID	Frac ring # 2 @	ID	Frac Ring # 3 @	ID	Frac Ring # 4 @	ID		
The Information Stated Herein Is Correct				Customer Representative Signature					

*The Road to Excellence Starts with Safety*

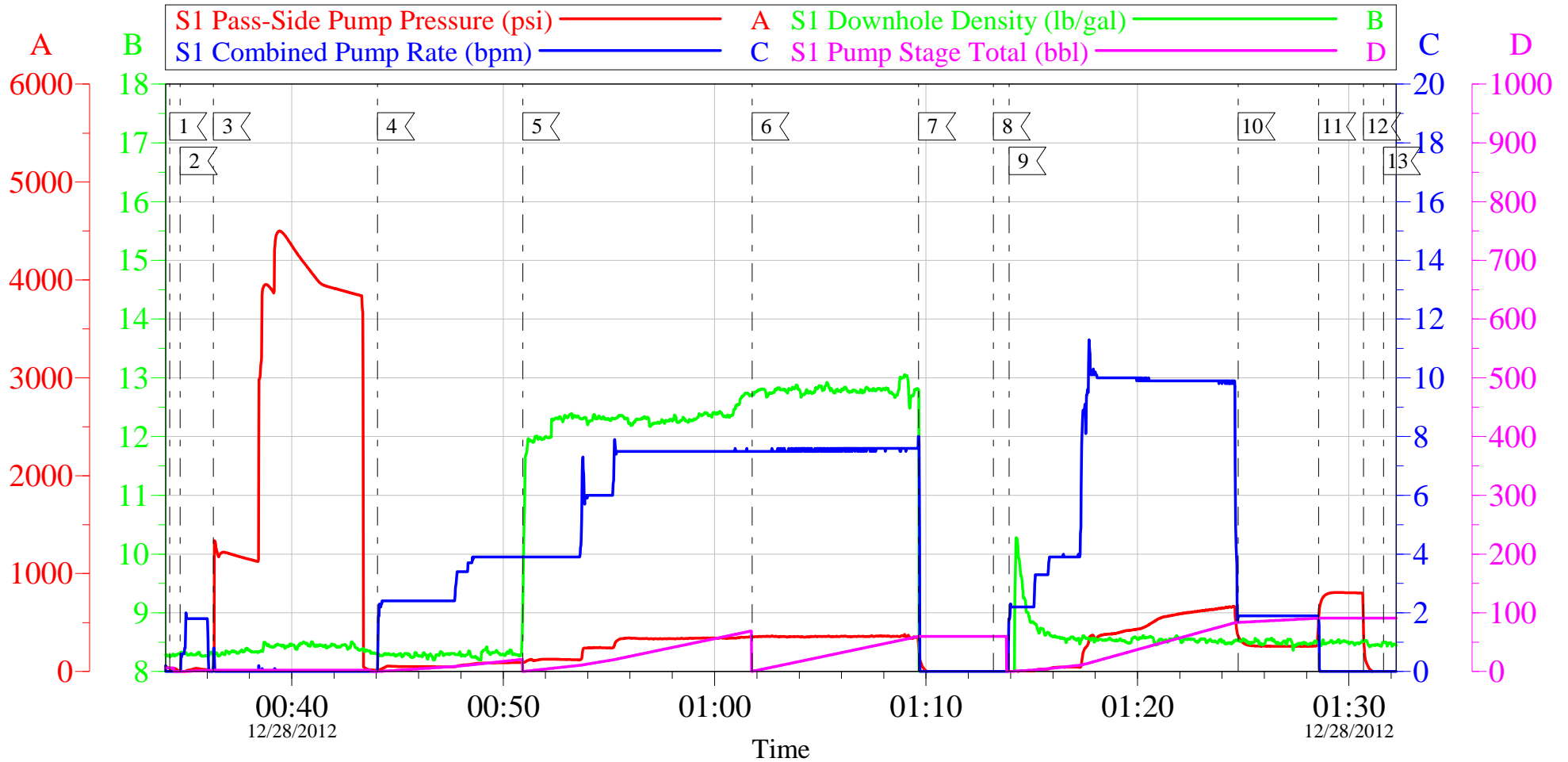
<b>Sold To #:</b> 300721		<b>Ship To #:</b> 2967988		<b>Quote #:</b>		<b>Sales Order #:</b> 900056094	
<b>Customer:</b> WPX ENERGY ROCKY MOUNTAIN LLC-EBUS				<b>Customer Rep:</b> Towers, Ron			
<b>Well Name:</b> PA			<b>Well #:</b> 343-5			<b>API/UWI #:</b> 05-045-20099	
<b>Field:</b> PARACHUTE		<b>City (SAP):</b> PARACHUTE		<b>County/Parish:</b> Garfield		<b>State:</b> Colorado	
<b>Legal Description:</b>							
<b>Lat:</b> N 39.463 deg. OR N 39 deg. 27 min. 48.478 secs.				<b>Long:</b> W 108.007 deg. OR W -109 deg. 59 min. 35.167 secs.			
<b>Contractor:</b> NABORS 577			<b>Rig/Platform Name/Num:</b> NABORS 577				
<b>Job Purpose:</b> Cement Surface Casing						<b>Ticket Amount:</b>	
<b>Well Type:</b> Development Well			<b>Job Type:</b> Cement Surface Casing				
<b>Sales Person:</b> MAYO, MARK			<b>Srvc Supervisor:</b> ARNOLD, EDWARD			<b>MBU ID Emp #:</b> 439784	

Activity Description	Date/Time	Cht #	Rate bbl/min	Volume bbl		Pressure psig		Comments
				Stage	Total	Tubing	Casing	
Call Out	12/27/2012 16:00							Crew called out.
Pre-Convoy Safety Meeting	12/27/2012 18:15							Including entire cement crew, discuss hazards, route, and safety.
Crew Leave Yard	12/27/2012 18:30							Leave yard for location.
Arrive At Loc	12/27/2012 20:00							Water Test: PH 7; KCL 250; SO4 <200; FE 0; Chlorides 0; Calcium 120; Temp 50; TDS 210.
Assessment Of Location Safety Meeting	12/27/2012 22:30							Including entire cement crew, discussed hazards, and rig up.
Pre-Rig Up Safety Meeting	12/27/2012 22:45							
Rig-Up Equipment	12/27/2012 23:00							1 Elite # 4; 1 660 Bulk Truck; 1 hard line to rig floor; 2 lines to rig tank; 1 9 5/8" compact head.
Rig-Up Completed	12/27/2012 23:45							
Pre-Job Safety Meeting	12/28/2012 00:00							Including everyone on location. Discussed hazards, emergency situations, and job procedure.
Start Job	12/28/2012 00:33							TD 1215; TP 1220; SJ 44; OH 13 1/2"; CASING 9 5/8" 32.3# H-40; MUD 9.6 PPG.
Pump Water	12/28/2012 00:34		2	2			66.0	Fresh water ahead to fill lines.
Test Lines	12/28/2012 00:36					3950.0		Test line to 3500 psi, Found no leaks, good test.

Activity Description	Date/Time	Cht #	Rate bbl/min	Volume bbl		Pressure psig		Comments
				Stage	Total	Tubing	Casing	
Pump Spacer 1	12/28/2012 00:44		4	20			100.0	20 BBL's fresh water.
Pump Lead Cement	12/28/2012 00:50		7.5	67.8			350.0	160 sks Lead cement, 12.3 ppg, 2.38 cf3, 13.75 gal/sk.
Pump Tail Cement	12/28/2012 01:01		7.5	60.1			370.0	160 sks Tail cement, 12.8 ppg, 2.11 cf3, 11.75 gal/sk.
Shutdown	12/28/2012 01:09							
Drop Plug	12/28/2012 01:13							Plug left Container.
Pump Displacement	12/28/2012 01:14		10	82.5			670.0	Fresh water displacement.
Slow Rate	12/28/2012 01:24		2	10			260.0	Slow rate last 10 BBL's of displacement prior to bumping the plug.
Bump Plug	12/28/2012 01:28				92.5		730.0	Plug landed. Took to 730 psi.
Check Floats	12/28/2012 01:30							Floats Held. .5 BBL's back. 20 BBL's of good cement to surface.
End Job	12/28/2012 01:31							
Pre-Rig Down Safety Meeting	12/28/2012 01:35							Including entire cement crew, discussed hazards and safety.
Rig-Down Equipment	12/28/2012 01:40							
Rig-Down Completed	12/28/2012 02:15							
Pre-Convoy Safety Meeting	12/28/2012 02:20							Including entire cement crew, discussed hazards, route, and safety.
Crew Leave Location	12/28/2012 02:30							
Other	12/28/2012 02:30							Thank You for using Halliburton, Ed Arnold and Crew.

# WPX - PA 343-5

9 5/8" SURFACE



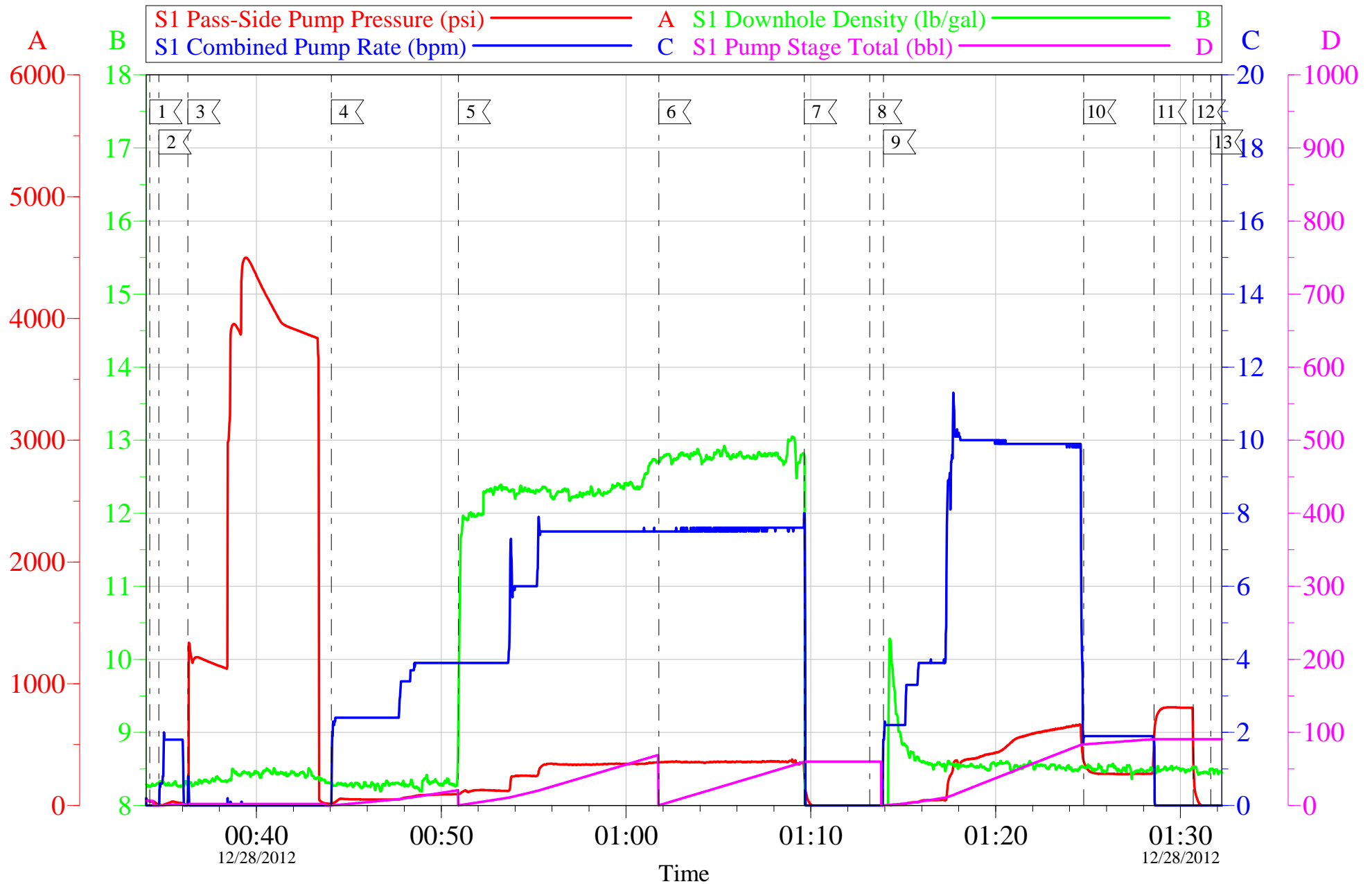
Local Event Log					
1	START JOB	00:34:14	2	FILL LINES	00:34:44
3	TEST LINES	00:36:18	4	H2O SPACER	00:44:03
5	LEAD CEMENT	00:50:56	6	TAIL CEMENT	01:01:46
7	SHUT DOWN	01:09:39	8	DROP PLUG	01:13:11
9	H2O DISPLACEMENT	01:13:56	10	SLOW RATE	01:24:46
11	BUMP PLUG	01:28:34	12	CHECK FLOATS	01:30:42
13	END JOB	01:31:38			

Customer: WPX	Job Date: 27-Dec-2012	Sales Order #: 900056094
Well Description: PA 343-5	Job Type: SURFACE	ADC Used: YES
Company Rep: RON TOWERS	Cement Supervisor: ED ARNOLD	Elite #4: PAUL SALAZAR

OptiCem v6.4.10  
28-Dec-12 01:34

# WPX - PA 343-5

9 5/8" SURFACE



Customer: WPX	Job Date: 27-Dec-2012	Sales Order #: 900056094
Well Description: PA 343-5	Job Type: SURFACE	ADC Used: YES
Company Rep: RON TOWERS	Cement Supervisor: ED ARNOLD	Elite #4: PAUL SALAZAR

OptiCem v6.4.10  
28-Dec-12 01:35

<b>Sales Order #:</b> 900056094	<b>Line Item:</b> 10	<b>Survey Conducted Date:</b> 12/28/2012
<b>Customer:</b> WPX ENERGY ROCKY MOUNTAIN LLC-EBUS		<b>Job Type (BOM):</b> CMT SURFACE CASING BOM
<b>Customer Representative:</b> RON TOWERS		<b>API / UWI: (leave blank if unknown)</b> 05-045-20099
<b>Well Name:</b> PA		<b>Well Number:</b> 343-5
<b>Well Type:</b> Development Well	<b>Well Country:</b> United States of America	
<b>H2S Present:</b> No	<b>Well State:</b> Colorado	<b>Well County:</b> Garfield

Dear Customer,

We hope that you were satisfied with the service quality of this job performed by Halliburton. It is the aim of our management and service personnel to deliver equipment and service of a standard unmatched in the service sector of the energy industry.

Please take the time to let us know if our performance met with your satisfaction. Please be as critical as possible to ensure we constantly improve our service. Your comments are of great value to us and are intended for the exclusive use of Halliburton.

### CUSTOMER SATISFACTION SURVEY

CATEGORY	CUSTOMER SATISFACTION RESPONSE	
Survey Conducted Date	The date the survey was conducted	12/28/2012
Survey Interviewer	The survey interviewer is the person who initiated the survey.	EDWARD ARNOLD ()
Customer Participation	Did the customer participate in this survey? (Y/N)	Yes
Customer Representative	Enter the Customer representative name	RON TOWERS
HSE	Was our HSE performance satisfactory? Circle Y or N	Yes
Equipment	Were you satisfied with our Equipment? Circle Y or N	Yes
Personnel	Were you satisfied with our people? Circle Y or N	Yes
Customer Comment	Customer's Comment	

<b>CUSTOMER SIGNATURE</b>
---------------------------



<b>Sales Order #:</b> 900056094	<b>Line Item:</b> 10	<b>Survey Conducted Date:</b> 12/28/2012
<b>Customer:</b> WPX ENERGY ROCKY MOUNTAIN LLC-EBUS		<b>Job Type (BOM):</b> CMT SURFACE CASING BOM
<b>Customer Representative:</b> RON TOWERS		<b>API / UWI: (leave blank if unknown)</b> 05-045-20099
<b>Well Name:</b> PA		<b>Well Number:</b> 343-5
<b>Well Type:</b> Development Well	<b>Well Country:</b> United States of America	
<b>H2S Present:</b> No	<b>Well State:</b> Colorado	<b>Well County:</b> Garfield

### KEY PERFORMANCE INDICATORS

General	
<b>Survey Conducted Date</b> The date the survey was conducted	12/28/2012

Cementing KPI Survey	
<b>Type of Job</b> Select the type of job. (Cementing or Non-Cementing)	0
<b>Select the Maximum Deviation range for this Job</b> What is the highest deviation for the job you just completed? This may not be the maximum well deviation.	Vertical
<b>Total Operating Time (hours)</b> Total Operating Hours Including Rig-up, Pumping, Rig-down. Enter in decimal format.	4
<b>HSE Incident, Accident, Injury</b> HSE Incident, Accident, Injury. This should be recordable incidents only.	No
<b>Was the job purpose achieved?</b> Was the job delivered correctly as per customer agreed design?	Yes
<b>Operating Hours (Pumping Hours)</b> Total number of hours pumping fluid on this job. Enter in decimal format.	1
<b>Customer Non-Productive Rig Time (hrs)</b> Lost time due to Halliburton in the start, execution, or completion of an ordered service or product, or delays in a follow-on service. Enter in decimal format. 0 if none.	0
<b>Type of Rig Classification Job Was Performed</b> Type Of Rig (classification) Job Was Performed On	Drilling Rig (Portable)
<b>Number Of JSAs Performed</b> Number Of Jsas Performed	5
<b>Number of Unplanned Shutdowns</b> Unplanned shutdown is when injection stops for any period of time.	0
<b>Was this a Primary Cement Job (Yes / No)</b>	Yes

<b>Sales Order #:</b> 900056094	<b>Line Item:</b> 10	<b>Survey Conducted Date:</b> 12/28/2012
<b>Customer:</b> WPX ENERGY ROCKY MOUNTAIN LLC-EBUS		<b>Job Type (BOM):</b> CMT SURFACE CASING BOM
<b>Customer Representative:</b> RON TOWERS		<b>API / UWI: (leave blank if unknown)</b> 05-045-20099
<b>Well Name:</b> PA		<b>Well Number:</b> 343-5
<b>Well Type:</b> Development Well	<b>Well Country:</b> United States of America	
<b>H2S Present:</b> No	<b>Well State:</b> Colorado	<b>Well County:</b> Garfield

Primary Cement Job= Casing job, Liner job, or Tie-back job.	
<b>Did We Run Wiper Plugs?</b> Did We Run Top And Bottom Casing Wiper Plugs?	Top
<b>Mixing Density of Job Stayed in Designed Density Range (0-100%)</b> Density Range defined as +/- .20 ppg. Calculation: Total BBLs cement mixed at designed density divided by total BBLs of cement multiplied by 100	97
<b>Was Automated Density Control Used?</b> Was Automated Density Control (ADC) Used ?	Yes
<b>Pump Rate (percent) of Job Stayed At Designed Pump Rate</b> Pump Rate range defined as +/- 1bbl/min. Calculation: Total BBLs of fluid pumped at the designed rate divided by Total BBLs of fluid pumped, multiplied by 100	99
<b>Nbr of Remedial Sqz Jobs Rqd - Competition</b> Number Of Remedial Squeeze Jobs Required After Primary Job Performed By Competition	0
<b>Nbr of Remedial Plug Jobs Rqd - HES</b> Number Of Remedial Plug Jobs Needed After Primary Plug Pumped By HES	0
<b>Nbr of Remedial Sqz Jobs Rqd - HES</b> Number Of Remedial Squeeze Jobs Required After Primary Job Performed By HES	0