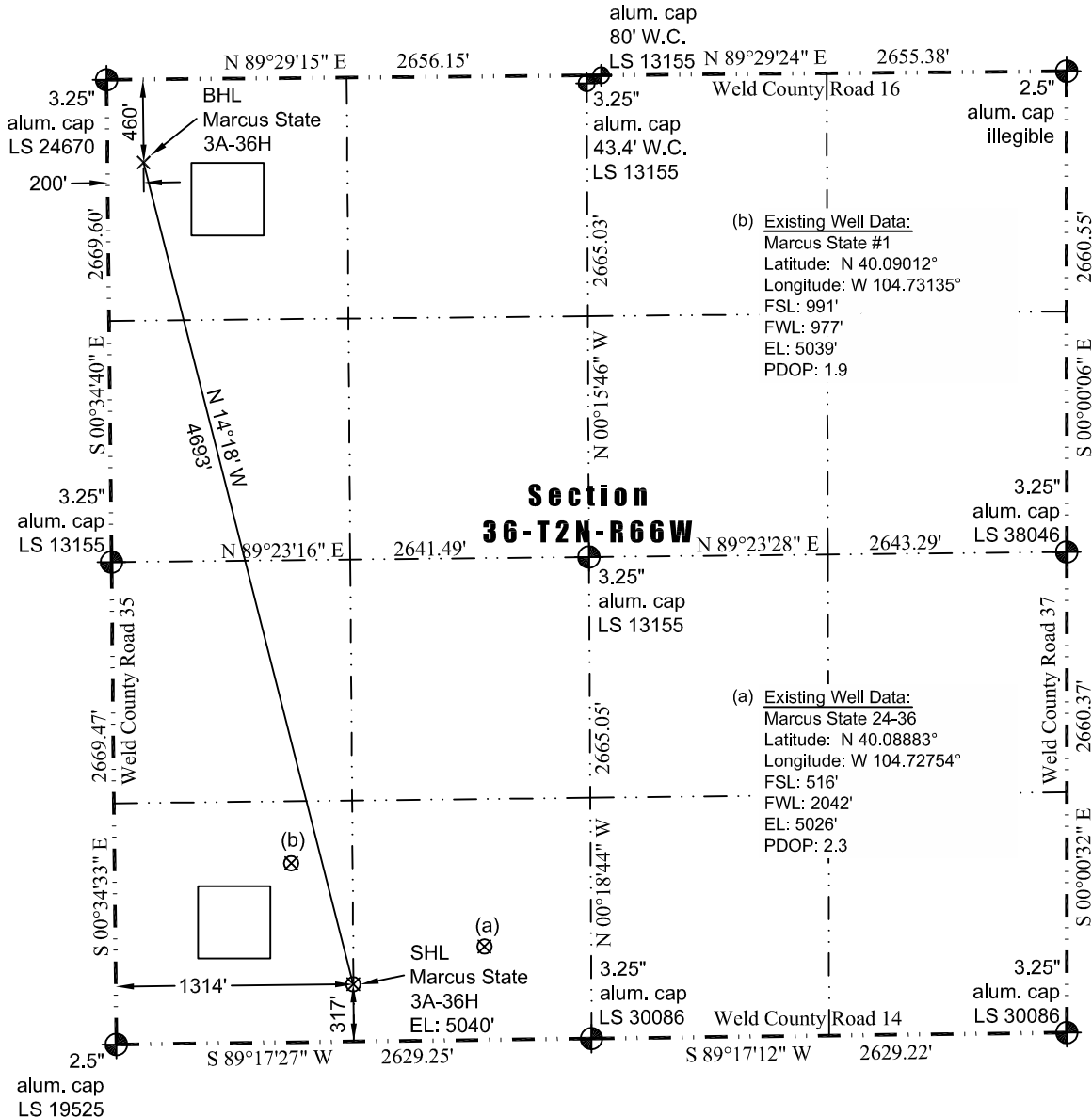


JR Land Surveying, LLC

8114 Northstar Drive
Windsor, Colorado 80528
P. 970-576-4641

WELL LOCATION CERTIFICATE

THIS MAP DOES NOT REPRESENT A BOUNDARY SURVEY



In accordance with a request from Jay Knutson of EnCana Oil & Gas (USA) Inc., JR Land Surveying, LLC has determined the location of the **Marcus State 3A-36H** well site to be SHL: 317' FSL and 1314' FWL, (BHL: 460' FNL and 200' FWL) as measured at ninety (90) degrees from the section lines of Section 36, Township 2 North, Range 66 West, 6th Principal Meridian, County of Weld, CO.

Proposed Surface Hole Data:

Latitude: N 40.08828° (BHL: 40.10079°)
Longitude: W 104.73014° (BHL: 104.73415°)
PDOP: 1.9

Nearest:

Building 1,152' southeast	Above Ground Utility 1,346' southeast
Public Road 307' south	Railroad 21,910' west
Property Line 317' south	Well Window: SHL is 481' outside
Existing Well: Marcus State 24-36, 756' northeast	

I hereby certify that this Well Location Certificate was prepared by me or under my direct supervision on 11/6/2012 for and on behalf of EnCana Oil & Gas (USA) Inc. That it is not a Land Survey Plat or an Improvement Survey Plat and that it is not to be relied upon for establishment of fences, buildings, or other future improvement lines.

Notes:

- 1) Bearings and distances based on NAD 83 Colorado North State Plane Coordinates using RTK GPS observations taken 11/3/12 by operator John Rice.
- 2) Conversion factor to ground (1.0002810046).
- 3) Elevations based on NAVD 88 GPS heights and Geoid 2003 corrections.
- 4) See Location Drawing for visible improvements within 400 of pad site.
- 5) The surface use is a pastured field.

NOTICE: According to Colorado law you MUST commence any legal action based upon any defect in this W.L.C. within three years after you first discover such defect. In no event may any action based upon any defect in this W.L.C. be commenced more than ten years from this said date of the certification shown hereon.

John Robert McGehee LS#38219
Well: Marcus State 3A-36H