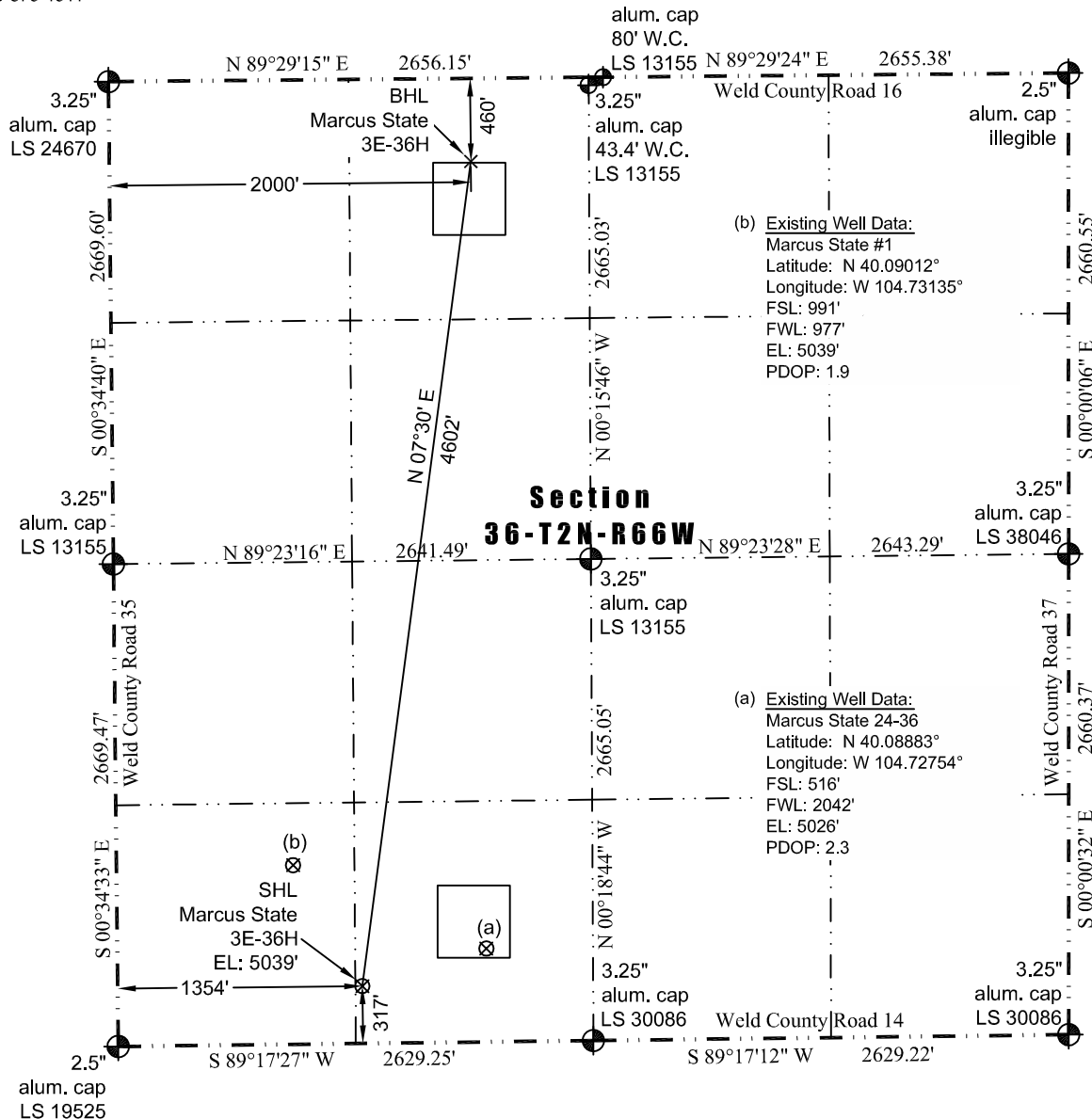


**JR Land Surveying, LLC**

8114 Northstar Drive  
Windsor, Colorado 80528  
P. 970-576-4641

**WELL LOCATION CERTIFICATE**

*THIS MAP DOES NOT REPRESENT A BOUNDARY SURVEY*



In accordance with a request from Jay Knutson of EnCana Oil & Gas (USA) Inc., JR Land Surveying, LLC has determined the location of the **Marcus State 3E-36H** well site to be SHL: 317' FSL and 1354' FWL, (BHL: 460' FNL and 2000' FWL) as measured at ninety (90) degrees from the section lines of Section 36, Township 2 North, Range 66 West, 6th Principal Meridian, County of Weld, CO.

**Proposed Surface Hole Data:**

Latitude: N 40.08828° (BHL: 40.10079°)  
Longitude: W 104.73000° (BHL: 104.72771°)  
PDOP: 2.0

**Nearest:**

Building 1,114' southeast	Above Ground Utility 1,307' southeast
Public Road 308' south	Railroad 21,950' west
Property Line 317' south	Well Window: SHL is 445' outside
Existing Well: Marcus State 24-36, 717' northeast	

**Notes:**

- 1) Bearings and distances based on NAD 83 Colorado North State Plane Coordinates using RTK GPS observations taken 11/3/12 by operator John Rice.
- 2) Conversion factor to ground (1.0002810046).
- 3) Elevations based on NAVD 88 GPS heights and Geoid 2003 corrections.
- 4) See Location Drawing for visible improvements within 400 of pad site.
- 5) The surface use is a pastured field.

**NOTICE:** According to Colorado law you MUST commence any legal action based upon any defect in this W.L.C. within three years after you first discover such defect. In no event may any action based upon any defect in this W.L.C. be commenced more than ten years from this said date of the certification shown hereon.

I hereby certify that this Well Location Certificate was prepared by me or under my direct supervision on 11/6/2012 for and on behalf of EnCana Oil & Gas (USA) Inc. That it is not a Land Survey Plat or an Improvement Survey Plat and that it is not to be relied upon for establishment of fences, buildings, or other future improvement lines.

John Robert McGehee LS#38219  
Well: Marcus State 3E-36H