

DW 8608C-28 P28 496 TGT 2 (Column)

DW 8608C-28 P28 496 PBHL 2 (Column)

Last Cathedral Survey @ 11,589' MD

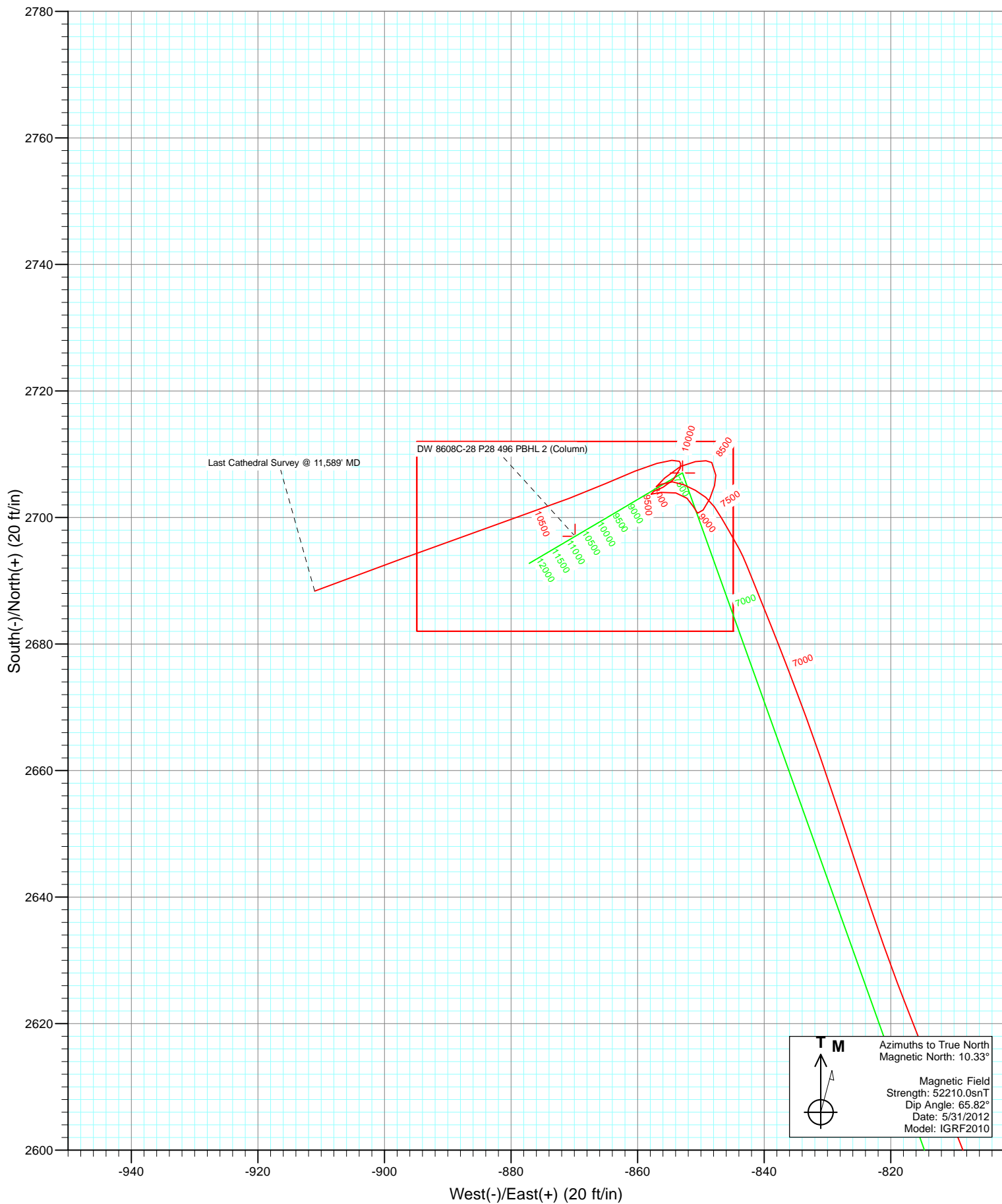
Permit TD @ 12,976.7' MD



Azimuths to True North  
 Magnetic North: 10.33°

Magnetic Field  
 Strength: 52210.0snT  
 Dip Angle: 65.82°  
 Date: 5/31/2012  
 Model: IGRF2010

FINAL						
DW 8608C-28 (P28 496)						
125137/143355 (MH) 125077/138955 (SH) ; SC						
KBE @ 7813.0ft (Patterson 308)						
North American Datum 1983						
Well DW 8608C-28 (P28 496), True North						
Type	Target	Azimuth	Origin Type	N/S	E/W	From TVD
Target	DW 8608C-28 P28 496 PBHL (Column)	342.12	Slot	0.0	0.0	0.0
Name	DW 8608C-28 P28 496 TGT 2 (Column)	TVD	+N/-S	+E/-W	Latitude	Longitude
		2707.0	-852.9	39° 40' 31.88 N	108° 10' 7.46 W	
	DW 8608C-28 P28 496 PBHL 2 (Column)	2697.0	-869.9	39° 40' 31.78 N	108° 10' 7.67 W	



## Survey Report

<b>Company:</b>	EnCana Oil & Gas (USA) Inc	<b>Local Co-ordinate Reference:</b>	Well DW 8608C-28 (P28 496)
<b>Project:</b>	Double Willow	<b>TVD Reference:</b>	KBE @ 7813.0ft (Patterson 308)
<b>Site:</b>	S28-T4S-R96W (P28 496)(column pattern)	<b>MD Reference:</b>	KBE @ 7813.0ft (Patterson 308)
<b>Well:</b>	DW 8608C-28 (P28 496)	<b>North Reference:</b>	True
<b>Wellbore:</b>	DD	<b>Survey Calculation Method:</b>	Minimum Curvature
<b>Design:</b>	FINAL	<b>Database:</b>	USA EDM 5000 Multi Users DB

<b>Project</b>	Double Willow		
<b>Map System:</b>	US State Plane 1983	<b>System Datum:</b>	Mean Sea Level
<b>Geo Datum:</b>	North American Datum 1983		
<b>Map Zone:</b>	Colorado Central Zone		

Site	S28-T4S-R96W (P28 496)(column pattern)				
Site Position:		Northing:	1,679,243.29 ft	Latitude:	39° 40' 5.13 N
From:	Lat/Long	Easting:	2,249,687.54 ft	Longitude:	108° 9' 56.55 W
Position Uncertainty:	0.0 ft	Slot Radius:	13.200 in	Grid Convergence:	-1.68 °

Well	DW 8608C-28 (P28 496)					
Well Position	+N/-S	0.0 ft	Northing:	1,679,243.26 ft	Latitude:	39° 40' 5.13 N
	+E/-W	0.0 ft	Easting:	2,249,687.54 ft	Longitude:	108° 9' 56.55 W
Position Uncertainty		0.0 ft	Wellhead Elevation:	ft	Ground Level:	7,780.0 ft

<b>Wellbore</b>	DD				
<b>Magnetics</b>	<b>Model Name</b>	<b>Sample Date</b>	<b>Declination (°)</b>	<b>Dip Angle (°)</b>	<b>Field Strength (nT)</b>
	IGRF2010	5/31/2012	10.33	65.82	52,210

<b>Design</b>	FINAL				
<b>Audit Notes:</b>					
<b>Version:</b>	1.0	<b>Phase:</b>	ACTUAL	<b>Tie On Depth:</b>	0.0
<b>Vertical Section:</b>	<b>Depth From (TVD)</b>	<b>+N/-S</b>	<b>+E/-W</b>	<b>Direction</b>	
	(ft)	(ft)	(ft)	(°)	
	0.0	0.0	0.0	342.12	

<b>Survey Program</b>	<b>Date</b>	6/13/2012			
<b>From (ft)</b>	<b>To (ft)</b>	<b>Survey (Wellbore)</b>	<b>Tool Name</b>	<b>Description</b>	
109.0	2,080.0	Survey #1 (DD)	MWD	Geolink MWD	
2,166.0	11,589.0	Survey #2 (DD)	MWD	Geolink MWD	

<b>Survey</b>									
<b>Measured Depth (ft)</b>	<b>Inclination (°)</b>	<b>Azimuth (°)</b>	<b>Vertical Depth (ft)</b>	<b>+N/-S (ft)</b>	<b>+E/-W (ft)</b>	<b>Vertical Section (ft)</b>	<b>Dogleg Rate (°/100ft)</b>	<b>Build Rate (°/100ft)</b>	<b>Formations / Comments</b>
0.0	0.00	0.00	0.0	0.0	0.0	0.0	0.00	0.00	
109.0	0.00	0.00	109.0	0.0	0.0	0.0	0.00	0.00	
139.0	0.00	0.00	139.0	0.0	0.0	0.0	0.00	0.00	
170.0	0.70	96.00	170.0	0.0	0.2	-0.1	2.26	2.26	
200.0	0.40	66.30	200.0	0.0	0.5	-0.1	1.35	-1.00	
231.0	0.70	2.60	231.0	0.2	0.6	0.0	2.04	0.97	
261.0	1.90	352.10	261.0	0.9	0.5	0.7	4.06	4.00	
292.0	3.00	353.10	292.0	2.2	0.3	2.0	3.55	3.55	
323.0	4.30	351.80	322.9	4.2	0.1	4.0	4.20	4.19	
353.0	5.40	349.10	352.8	6.7	-0.3	6.5	3.74	3.67	
384.0	5.80	353.90	383.6	9.7	-0.8	9.4	1.99	1.29	
414.0	6.60	355.60	413.5	12.9	-1.1	12.6	2.74	2.67	

## Survey Report

<b>Company:</b>	EnCana Oil & Gas (USA) Inc	<b>Local Co-ordinate Reference:</b>	Well DW 8608C-28 (P28 496)
<b>Project:</b>	Double Willow	<b>TVD Reference:</b>	KBE @ 7813.0ft (Patterson 308)
<b>Site:</b>	S28-T4S-R96W (P28 496)(column pattern)	<b>MD Reference:</b>	KBE @ 7813.0ft (Patterson 308)
<b>Well:</b>	DW 8608C-28 (P28 496)	<b>North Reference:</b>	True
<b>Wellbore:</b>	DD	<b>Survey Calculation Method:</b>	Minimum Curvature
<b>Design:</b>	FINAL	<b>Database:</b>	USA EDM 5000 Multi Users DB

### Survey

Measured Depth (ft)	Inclination (°)	Azimuth (°)	Vertical Depth (ft)	+N/-S (ft)	+E/-W (ft)	Vertical Section (ft)	Dogleg Rate (°/100ft)	Build Rate (°/100ft)	Formations / Comments
445.0	7.60	354.20	444.2	16.7	-1.4	16.3	3.27	3.23	
475.0	8.00	357.20	474.0	20.8	-1.7	20.3	1.90	1.33	
506.0	8.30	358.80	504.6	25.2	-1.9	24.5	1.21	0.97	
555.0	8.30	359.20	553.1	32.2	-2.0	31.3	0.12	0.00	
600.0	8.10	1.50	597.7	38.7	-2.0	37.4	0.85	-0.44	
646.0	8.20	4.00	643.2	45.2	-1.7	43.5	0.80	0.22	
692.0	9.20	5.30	688.7	52.1	-1.1	49.9	2.22	2.17	
738.0	10.50	5.00	734.0	59.9	-0.4	57.2	2.83	2.83	
783.0	10.70	4.10	778.2	68.2	0.3	64.8	0.58	0.44	
829.0	11.90	0.30	823.3	77.2	0.6	73.3	3.07	2.61	
875.0	13.50	359.70	868.2	87.3	0.6	82.9	3.49	3.48	
921.0	14.80	1.40	912.8	98.5	0.7	93.6	2.97	2.83	
967.0	15.70	3.30	957.2	110.6	1.2	104.9	2.24	1.96	
1,012.0	16.10	2.30	1,000.5	122.9	1.8	116.5	1.08	0.89	
1,058.0	17.20	1.30	1,044.5	136.1	2.2	128.9	2.47	2.39	
1,104.0	17.50	0.90	1,088.4	149.8	2.5	141.8	0.70	0.65	
1,150.0	18.30	0.00	1,132.2	164.0	2.6	155.3	1.84	1.74	
1,195.0	18.90	359.90	1,174.9	178.3	2.6	168.9	1.34	1.33	
1,241.0	20.90	359.10	1,218.1	194.0	2.5	183.9	4.39	4.35	
1,287.0	22.10	357.70	1,260.9	210.8	2.0	200.0	2.84	2.61	
1,333.0	23.50	356.60	1,303.3	228.6	1.1	217.3	3.18	3.04	
1,379.0	24.00	355.70	1,345.4	247.1	-0.2	235.2	1.34	1.09	
1,424.0	25.20	355.30	1,386.3	265.8	-1.6	253.5	2.69	2.67	
1,470.0	25.70	354.00	1,427.9	285.5	-3.5	272.8	1.63	1.09	
1,516.0	26.60	351.60	1,469.2	305.6	-6.0	292.7	3.02	1.96	
1,562.0	27.10	348.70	1,510.2	326.0	-9.6	313.2	3.05	1.09	
1,607.0	27.30	347.00	1,550.2	346.1	-13.9	333.7	1.78	0.44	
1,699.0	28.30	343.60	1,631.6	387.6	-24.8	376.5	2.04	1.09	
1,791.0	27.90	342.10	1,712.8	429.0	-37.6	419.9	0.88	-0.43	
1,882.0	27.60	341.00	1,793.3	469.2	-51.0	462.2	0.65	-0.33	
1,973.0	25.10	339.40	1,874.9	507.2	-64.7	502.6	2.86	-2.75	
2,080.0	23.60	338.70	1,972.3	548.4	-80.4	546.6	1.43	-1.40	
2,166.0	21.60	337.50	2,051.7	579.1	-92.7	579.6	2.39	-2.33	
2,257.0	21.40	337.60	2,136.4	609.9	-105.5	612.9	0.22	-0.22	
2,349.0	25.40	344.30	2,220.8	644.5	-117.2	649.3	5.22	4.35	
2,440.0	24.60	343.80	2,303.3	681.4	-127.8	687.8	0.91	-0.88	
2,532.0	25.10	339.70	2,386.8	718.1	-139.9	726.4	1.95	0.54	
2,623.0	26.00	338.20	2,468.9	754.8	-154.0	765.6	1.22	0.99	
2,715.0	25.30	341.50	2,551.8	792.1	-167.7	805.4	1.73	-0.76	
2,806.0	28.50	341.90	2,633.0	831.2	-180.6	846.5	3.52	3.52	
2,898.0	27.80	341.00	2,714.1	872.4	-194.4	889.9	0.89	-0.76	
2,990.0	26.50	337.70	2,795.9	911.6	-209.2	931.8	2.16	-1.41	
3,081.0	27.10	342.30	2,877.2	950.2	-223.2	972.8	2.37	0.66	
3,173.0	25.10	340.20	2,959.8	988.5	-236.2	1,013.3	2.39	-2.17	
3,264.0	25.10	338.00	3,042.2	1,024.6	-250.0	1,051.8	1.03	0.00	
3,355.0	25.60	338.90	3,124.4	1,060.8	-264.3	1,090.7	0.69	0.55	
3,447.0	26.40	345.10	3,207.1	1,099.1	-276.7	1,131.0	3.08	0.87	
3,538.0	22.90	340.50	3,289.9	1,135.4	-287.8	1,168.9	4.38	-3.85	
3,629.0	25.70	341.00	3,372.8	1,170.7	-300.2	1,206.3	3.09	3.08	
3,721.0	28.40	340.50	3,454.7	1,210.2	-314.0	1,248.2	2.95	2.93	
3,812.0	27.30	337.00	3,535.2	1,249.8	-329.3	1,290.6	2.17	-1.21	
3,904.0	26.10	337.20	3,617.4	1,287.9	-345.4	1,331.8	1.31	-1.30	
3,995.0	25.30	335.20	3,699.4	1,324.0	-361.3	1,371.0	1.30	-0.88	

## Survey Report

<b>Company:</b>	EnCana Oil & Gas (USA) Inc	<b>Local Co-ordinate Reference:</b>	Well DW 8608C-28 (P28 496)
<b>Project:</b>	Double Willow	<b>TVD Reference:</b>	KBE @ 7813.0ft (Patterson 308)
<b>Site:</b>	S28-T4S-R96W (P28 496)(column pattern)	<b>MD Reference:</b>	KBE @ 7813.0ft (Patterson 308)
<b>Well:</b>	DW 8608C-28 (P28 496)	<b>North Reference:</b>	True
<b>Wellbore:</b>	DD	<b>Survey Calculation Method:</b>	Minimum Curvature
<b>Design:</b>	FINAL	<b>Database:</b>	USA EDM 5000 Multi Users DB

Survey									
Measured Depth (ft)	Inclination (°)	Azimuth (°)	Vertical Depth (ft)	+N/-S (ft)	+E/-W (ft)	Vertical Section (ft)	Dogleg Rate (°/100ft)	Build Rate (°/100ft)	Formations / Comments
4,087.0	25.50	339.20	3,782.5	1,360.4	-376.6	1,410.3	1.88	0.22	
4,178.0	27.00	341.60	3,864.1	1,398.3	-390.1	1,450.5	2.02	1.65	
4,270.0	24.90	344.50	3,946.8	1,436.8	-401.9	1,490.8	2.67	-2.28	
4,361.0	27.40	342.20	4,028.5	1,475.2	-413.4	1,530.8	2.96	2.75	
4,453.0	26.90	340.90	4,110.4	1,515.0	-426.7	1,572.8	0.84	-0.54	
4,544.0	25.10	344.40	4,192.1	1,553.0	-438.6	1,612.7	2.60	-1.98	
4,636.0	23.40	341.40	4,276.0	1,589.2	-449.7	1,650.5	2.28	-1.85	
4,728.0	24.80	341.60	4,360.0	1,624.8	-461.6	1,688.0	1.52	1.52	
4,819.0	26.90	339.80	4,441.9	1,662.2	-474.7	1,727.7	2.46	2.31	
4,911.0	25.20	343.10	4,524.6	1,700.5	-487.6	1,768.1	2.43	-1.85	
5,002.0	23.50	338.70	4,607.5	1,735.9	-499.8	1,805.6	2.73	-1.87	
5,094.0	25.30	342.30	4,691.2	1,771.8	-512.5	1,843.5	2.54	1.96	
5,185.0	27.80	343.30	4,772.6	1,810.6	-524.5	1,884.2	2.79	2.75	
5,277.0	26.40	340.20	4,854.5	1,850.4	-537.6	1,926.1	2.16	-1.52	
5,368.0	23.70	339.80	4,937.0	1,886.6	-550.7	1,964.6	2.97	-2.97	
5,460.0	25.80	342.70	5,020.5	1,923.1	-563.1	2,003.1	2.64	2.28	
5,552.0	27.60	340.50	5,102.7	1,962.3	-576.2	2,044.4	2.23	1.96	
5,643.0	25.50	341.50	5,184.1	2,000.7	-589.4	2,085.1	2.36	-2.31	
5,734.0	25.40	338.90	5,266.3	2,037.5	-602.6	2,124.2	1.23	-0.11	
5,826.0	28.30	340.50	5,348.4	2,076.5	-617.0	2,165.7	3.25	3.15	
5,917.0	27.20	340.80	5,428.9	2,116.5	-631.1	2,208.0	1.22	-1.21	
6,009.0	23.70	339.50	5,512.0	2,153.7	-644.5	2,247.5	3.85	-3.80	
6,101.0	24.80	337.50	5,595.8	2,188.8	-658.3	2,285.2	1.49	1.20	
6,192.0	25.10	332.50	5,678.4	2,223.6	-674.5	2,323.3	2.34	0.33	
6,284.0	25.80	334.70	5,761.4	2,259.0	-692.1	2,362.4	1.28	0.76	
6,376.0	23.80	334.30	5,844.9	2,293.8	-708.7	2,400.6	2.18	-2.17	
6,467.0	23.70	340.30	5,928.2	2,327.6	-722.9	2,437.1	2.66	-0.11	
6,559.0	26.20	343.00	6,011.7	2,364.4	-735.0	2,475.9	2.99	2.72	
6,651.0	25.20	344.80	6,094.6	2,402.7	-746.1	2,515.8	1.38	-1.09	
6,742.0	24.00	342.50	6,177.3	2,439.1	-756.7	2,553.6	1.69	-1.32	
6,834.0	22.30	344.00	6,261.9	2,473.7	-767.2	2,589.8	1.96	-1.85	
6,926.0	21.40	341.50	6,347.3	2,506.4	-777.3	2,624.0	1.41	-0.98	
7,017.0	19.70	342.40	6,432.5	2,536.8	-787.2	2,656.0	1.90	-1.87	
7,109.0	18.60	342.60	6,519.4	2,565.6	-796.3	2,686.1	1.20	-1.20	
7,200.0	17.50	339.00	6,605.9	2,592.2	-805.5	2,714.3	1.72	-1.21	
7,292.0	16.90	338.20	6,693.8	2,617.5	-815.5	2,741.5	0.70	-0.65	
7,383.0	13.20	341.90	6,781.7	2,639.7	-823.6	2,765.1	4.20	-4.07	
7,475.0	10.00	341.20	6,871.8	2,657.2	-829.4	2,783.6	3.48	-3.48	
7,566.0	8.90	339.70	6,961.5	2,671.3	-834.4	2,798.5	1.24	-1.21	
7,658.0	6.50	337.80	7,052.7	2,682.8	-838.9	2,810.8	2.62	-2.61	
7,750.0	4.00	338.70	7,144.3	2,690.6	-842.0	2,819.2	2.72	-2.72	
7,841.0	1.90	331.60	7,235.2	2,694.9	-843.9	2,823.8	2.34	-2.31	
7,896.3	1.90	330.58	7,290.4	2,696.5	-844.8	2,825.6	0.06	0.00	DW 8608C-28 P28 496 TGT 2 (Column)
7,933.0	1.90	329.90	7,327.1	2,697.6	-845.4	2,826.8	0.06	0.00	
8,024.0	1.40	330.10	7,418.1	2,699.8	-846.7	2,829.4	0.55	-0.55	
8,115.0	1.40	324.90	7,509.1	2,701.7	-847.9	2,831.5	0.14	0.00	
8,207.0	1.10	309.00	7,601.0	2,703.2	-849.2	2,833.4	0.50	-0.33	
8,299.0	1.40	300.60	7,693.0	2,704.3	-850.9	2,834.9	0.38	0.33	
8,390.0	1.20	289.00	7,784.0	2,705.2	-852.7	2,836.3	0.36	-0.22	
8,481.0	1.10	278.20	7,875.0	2,705.6	-854.5	2,837.3	0.26	-0.11	
8,573.0	1.30	241.00	7,967.0	2,705.2	-856.3	2,837.5	0.86	0.22	
8,664.0	0.20	48.00	8,058.0	2,704.8	-857.1	2,837.3	1.64	-1.21	
8,756.0	2.20	44.30	8,149.9	2,706.2	-855.7	2,838.2	2.17	2.17	

## Survey Report

<b>Company:</b>	EnCana Oil & Gas (USA) Inc	<b>Local Co-ordinate Reference:</b>	Well DW 8608C-28 (P28 496)
<b>Project:</b>	Double Willow	<b>TVD Reference:</b>	KBE @ 7813.0ft (Patterson 308)
<b>Site:</b>	S28-T4S-R96W (P28 496)(column pattern)	<b>MD Reference:</b>	KBE @ 7813.0ft (Patterson 308)
<b>Well:</b>	DW 8608C-28 (P28 496)	<b>North Reference:</b>	True
<b>Wellbore:</b>	DD	<b>Survey Calculation Method:</b>	Minimum Curvature
<b>Design:</b>	FINAL	<b>Database:</b>	USA EDM 5000 Multi Users DB

Survey									
Measured Depth (ft)	Inclination (°)	Azimuth (°)	Vertical Depth (ft)	+N/-S (ft)	+E/-W (ft)	Vertical Section (ft)	Dogleg Rate (°/100ft)	Build Rate (°/100ft)	Formations / Comments
8,847.0	1.80	64.70	8,240.9	2,708.1	-853.2	2,839.2	0.89	-0.44	
8,939.0	1.30	82.60	8,332.8	2,708.8	-850.8	2,839.2	0.75	-0.54	
9,030.0	0.80	89.70	8,423.8	2,709.0	-849.2	2,838.9	0.57	-0.55	
9,122.0	0.50	135.50	8,515.8	2,708.7	-848.3	2,838.3	0.63	-0.33	
9,305.0	0.90	177.00	8,698.8	2,706.7	-847.6	2,836.2	0.34	0.22	
9,392.0	1.30	193.70	8,785.8	2,705.0	-847.8	2,834.7	0.58	0.46	
9,483.0	1.50	205.40	8,876.8	2,703.0	-848.6	2,833.0	0.38	0.22	
9,574.0	1.10	217.10	8,967.7	2,701.2	-849.6	2,831.6	0.53	-0.44	
9,666.0	0.50	299.60	9,059.7	2,700.7	-850.5	2,831.4	1.25	-0.65	
9,757.0	1.10	339.30	9,150.7	2,701.7	-851.2	2,832.5	0.86	0.66	
9,849.0	1.10	305.80	9,242.7	2,703.0	-852.2	2,834.1	0.69	0.00	
9,940.0	1.40	287.70	9,333.7	2,703.9	-854.0	2,835.5	0.54	0.33	
10,032.0	1.60	258.10	9,425.7	2,704.0	-856.3	2,836.3	0.86	0.22	
10,124.0	0.40	268.10	9,517.6	2,703.7	-857.9	2,836.5	1.31	-1.30	
10,215.0	1.10	58.70	9,608.6	2,704.1	-857.4	2,836.8	1.61	0.77	
10,307.0	0.90	74.80	9,700.6	2,704.8	-856.0	2,837.0	0.37	-0.22	
10,398.0	1.70	43.30	9,791.6	2,706.0	-854.4	2,837.6	1.15	0.88	
10,490.0	1.10	11.90	9,883.6	2,707.8	-853.2	2,839.0	1.04	-0.65	
10,581.0	0.50	305.50	9,974.6	2,708.9	-853.4	2,840.1	1.11	-0.66	
10,673.0	1.10	263.40	10,066.6	2,709.0	-854.6	2,840.6	0.87	0.65	
10,764.0	1.90	255.80	10,157.5	2,708.6	-856.9	2,840.8	0.90	0.88	
10,856.0	2.70	246.70	10,249.5	2,707.3	-860.4	2,840.7	0.95	0.87	
10,947.0	3.70	247.60	10,340.3	2,705.4	-865.1	2,840.3	1.10	1.10	
11,039.0	4.00	248.10	10,432.1	2,703.0	-870.8	2,839.8	0.33	0.33	
11,405.0	4.80	251.90	10,797.0	2,693.5	-897.2	2,838.9	0.23	0.22	DW 8608C-28 P28 496 PBHL 2 (Column)
11,589.0	4.40	247.00	10,980.4	2,688.4	-911.0	2,838.2	0.30	-0.22	Last Cathedral Survey @ 11,589' MD

## Survey Report

<b>Company:</b>	EnCana Oil & Gas (USA) Inc	<b>Local Co-ordinate Reference:</b>	Well DW 8608C-28 (P28 496)
<b>Project:</b>	Double Willow	<b>TVD Reference:</b>	KBE @ 7813.0ft (Patterson 308)
<b>Site:</b>	S28-T4S-R96W (P28 496)(column pattern)	<b>MD Reference:</b>	KBE @ 7813.0ft (Patterson 308)
<b>Well:</b>	DW 8608C-28 (P28 496)	<b>North Reference:</b>	True
<b>Wellbore:</b>	DD	<b>Survey Calculation Method:</b>	Minimum Curvature
<b>Design:</b>	FINAL	<b>Database:</b>	USA EDM 5000 Multi Users DB

Targets									
Target Name	Dip Angle	Dip Dir.	TVD	+N/-S	+E/-W	Northing	Easting	Latitude	Longitude
- hit/miss target	(°)	(°)	(ft)	(ft)	(ft)	(ft)	(ft)		
- Shape									
DW 8608C-28 P28 496 I	0.00	0.00	10,870.0	2,697.0	-869.9	1,681,964.64	2,248,897.18	39° 40' 31.78 N	108° 10' 7.67 W
- actual wellpath misses target center by 78.0ft at 11405.0ft MD (10797.0 TVD, 2693.5 N, -897.2 E)									
- Rectangle (sides W30.0 H50.0 D0.0)									
DW 8608C-28 P28 496 `	0.00	0.00	7,221.0	2,707.0	-852.9	1,681,974.14	2,248,914.43	39° 40' 31.88 N	108° 10' 7.46 W
- actual wellpath misses target center by 15.6ft at 7827.6ft MD (7221.8 TVD, 2694.5 N, -843.7 E)									
- Point									
DW 8608C-28 P28 496 I	0.00	0.00	10,881.0	2,697.0	-869.9	1,681,964.64	2,248,897.18	39° 40' 31.78 N	108° 10' 7.67 W
- actual wellpath misses target center by 88.4ft at 11405.0ft MD (10797.0 TVD, 2693.5 N, -897.2 E)									
- Rectangle (sides W30.0 H50.0 D0.0)									
DW 8608C-28 P28 496 `	0.00	0.00	7,290.0	2,707.0	-852.9	1,681,974.14	2,248,914.43	39° 40' 31.88 N	108° 10' 7.46 W
- actual wellpath misses target center by 13.3ft at 7896.3ft MD (7290.4 TVD, 2696.5 N, -844.8 E)									
- Point									

Design Annotations				
Measured Depth	Vertical Depth	Local Coordinates		Comment
(ft)	(ft)	+N/-S (ft)	+E/-W (ft)	
11,589.0	10,980.4	2,688.4	-911.0	Last Cathedral Survey @ 11,589' MD

Checked By: \_\_\_\_\_ Approved By: \_\_\_\_\_ Date: \_\_\_\_\_