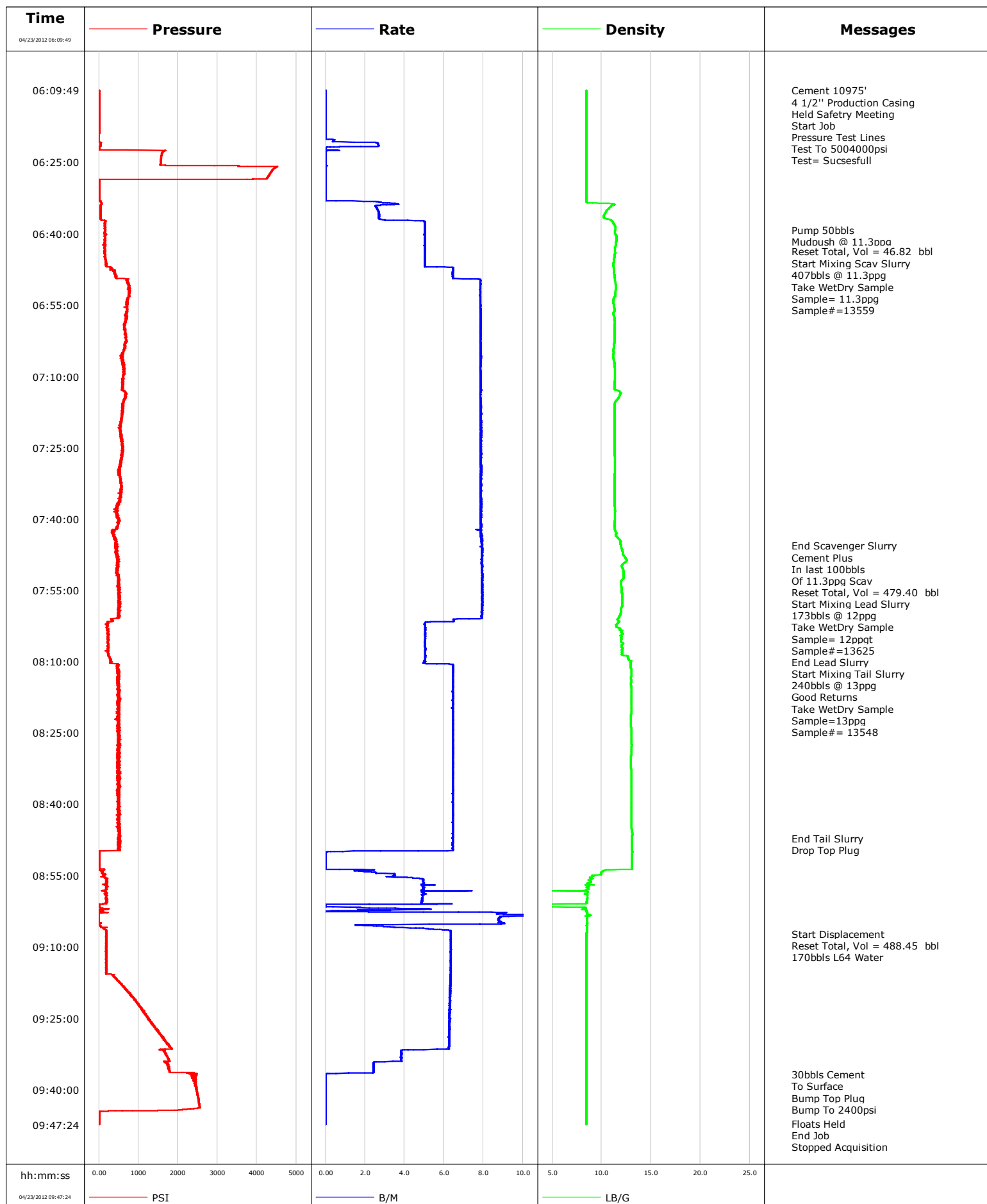


<b>Well</b>	DW 8609 D-28	<b>Client</b>	ENCNAN
<b>Field</b>	STORY GULCH	<b>SIR No.</b>	BTX1-00405
<b>Engineer</b>		<b>Job Type</b>	PRODUCTION
<b>Country</b>	United States	<b>Job Date</b>	04-23-2012





# Cementing Service Report

				Customer ENCNAN			Job Number BTX1-00405								
Well DW 8609 D-28			Location (legal) N PARACHUTE			Schlumberger Location GCO			Job Start Apr/23/2012						
Field STORY GULCH		Formation Name/Type			Deviation		Bit Size		Well MD		Well TVD				
County GARFILED		State/Province Colorado			BHP		BHST		BHCT		Pore Press. Gradient				
Well Master 0631292206		API/UWI													
Rig Name PATTERSON 308		Drilled For Gas		Service Via Land		Casing/Liner									
						Depth,		Size,		Weight,		Grade		Thread	
Offshore Zone		Well Class New		Well Type Development											
Drilling Fluid Type		Max. Density		Plastic Viscosity		Tubing/Drill Pipe									
						Depth,		Size,		Weight,		Grade		Thread	
Service Line Cementing		Job Type PRODUCTION													
Max. Allowed Tub. Press		Max. Allowed Ann. Press		WH Connection		Perforations/Open Hole									
						Top,		Bottom,				No. of Shots		Total Interval	
														Diameter	
						Treat Down Casing		Displacement 170.0 bbl		Packer Type		Packer Depth			
						Tubing Vol.		Casing Vol. 171.0 bbl		Annular Vol. 325.0 bbl		Openhole Vol. 783.0 bbl			
Casing/Tubing Secured <input checked="" type="checkbox"/>		1 Hole Vol. Circulated prior to Cement <input checked="" type="checkbox"/>				Casing Tools				Squeeze Job					
Lift Pressure				Shoe Type Guide				Squeeze Type							
Pipe Rotated <input type="checkbox"/>		Pipe Reciprocated <input type="checkbox"/>		Shoe Depth 10975.0 ft				Tool Type							
No. Centralizers		Top Plugs 1		Bottom Plugs		Stage Tool Type				Tool Depth					
Cement Head Type Single				Stage Tool Depth				Tail Pipe Size							
Job Scheduled For Apr/23/2012		Arrived on Location Apr/23/2012		Leave Location Apr/23/2012		Collar Type Diff-Fill				Tail Pipe Depth					
						Collar Depth 10952.0 ft				Sqz. Total Vol.					
Date	Time 24-hr clock	Treating Pressure PSI	Flow Rate B/M	Density LB/G	Volume BBL	Message									
04/23/2012	05:09:09					Started Acquisition									
04/23/2012	06:09:49	1	0.0	8.46	0.0										
04/23/2012	06:09:50					Cement 10975'									
04/23/2012	06:09:50					4 1/2" Production Casing									
04/23/2012	06:09:50					Held Safety Meeting									
04/23/2012	06:09:50	1	0.0	8.46	0.0										
04/23/2012	06:09:55					Start Job									
04/23/2012	06:09:55	1	0.0	8.46	0.0										
04/23/2012	06:09:57					Pressure Test Lines									
04/23/2012	06:09:57	1	0.0	8.46	0.0										
04/23/2012	06:09:58					Test To 5004000psi									
04/23/2012	06:09:58					Test= Succesfull									
04/23/2012	06:09:58	1	0.0	8.46	0.0										
04/23/2012	06:11:09	1	0.0	8.46	0.0										
04/23/2012	06:13:09	1	0.0	8.46	0.0										
04/23/2012	06:15:09	1	0.0	8.46	0.0										
04/23/2012	06:17:09	1	0.0	8.46	0.0										
04/23/2012	06:19:09	-2	0.0	8.46	0.0										
04/23/2012	06:21:09	43	2.7	8.45	1.3										
04/23/2012	06:23:09	1593	0.0	8.46	2.9										
04/23/2012	06:25:09	1559	0.0	8.46	2.9										

Well			Field		Job Start	Customer		Job Number
DW 8609 D-28			STORY GULCH		Apr/23/2012	ENCNAN		BTX1-00405
Date	Time 24-hr clock	Treating Pressure PSI	Flow Rate B/M	Density LB/G	Volume BBL	Message		
04/23/2012	06:29:09	12	0.0	8.46	2.9			
04/23/2012	06:31:09	11	0.0	8.46	2.9			
04/23/2012	06:33:09	49	1.4	8.46	2.9			
04/23/2012	06:35:09	46	2.6	10.51	8.5			
04/23/2012	06:37:09	66	3.0	10.91	13.9			
04/23/2012	06:39:09	162	5.0	11.38	23.8			
04/23/2012	06:39:15					Pump 50bbls		
04/23/2012	06:39:15	153	5.0	11.37	24.3			
04/23/2012	06:39:17					Mudpush @ 11.3ppg		
04/23/2012	06:39:17	152	5.0	11.37	24.4			
04/23/2012	06:41:09	144	5.0	11.49	33.8			
04/23/2012	06:43:09	141	5.0	11.35	43.9			
04/23/2012	06:43:44					Reset Total, Vol = 46.82 bbl		
04/23/2012	06:43:44	157	5.0	11.35	46.8			
04/23/2012	06:45:09	154	5.0	11.27	53.9			
04/23/2012	06:46:18					Start Mixing Scav Slurry		
04/23/2012	06:46:18	186	5.0	11.21	59.7			
04/23/2012	06:46:19					407bbls @ 11.3ppg		
04/23/2012	06:46:19					Take WetDry Sample		
04/23/2012	06:46:19					Sample= 11.3ppg		
04/23/2012	06:46:19					Sample#=13559		
04/23/2012	06:46:19	181	5.0	11.21	59.8			
04/23/2012	06:47:09	284	6.4	11.23	64.2			
04/23/2012	06:49:09	413	6.4	11.32	77.1			
04/23/2012	06:51:09	764	7.8	11.44	92.2			
04/23/2012	06:53:09	758	7.8	11.37	107.9			
04/23/2012	06:55:09	705	7.8	11.25	123.6			
04/23/2012	06:57:09	700	7.8	11.23	139.2			
04/23/2012	06:59:09	635	7.8	11.32	154.9			
04/23/2012	07:01:09	656	7.8	11.28	170.6			
04/23/2012	07:03:09	658	7.8	11.28	186.3			
04/23/2012	07:05:09	599	7.8	11.22	202.0			
04/23/2012	07:07:09	615	7.8	11.29	217.7			
04/23/2012	07:09:09	634	7.8	11.37	233.4			
04/23/2012	07:11:09	614	7.9	11.32	249.1			
04/23/2012	07:13:09	647	7.8	11.78	264.8			
04/23/2012	07:15:09	633	7.8	11.47	280.5			
04/23/2012	07:17:09	594	7.9	11.29	296.2			
04/23/2012	07:19:09	570	7.9	11.31	311.9			
04/23/2012	07:21:09	525	7.9	11.31	327.7			
04/23/2012	07:23:09	574	7.9	11.32	343.4			
04/23/2012	07:25:09	602	7.9	11.31	359.1			
04/23/2012	07:27:09	554	7.9	11.33	374.9			
04/23/2012	07:29:09	539	7.9	11.33	390.6			
04/23/2012	07:31:09	527	7.9	11.31	406.3			
04/23/2012	07:33:09	562	7.9	11.29	422.1			
04/23/2012	07:35:09	527	7.9	11.29	437.8			
04/23/2012	07:37:09	484	7.9	11.31	453.5			
04/23/2012	07:39:09	437	7.8	11.36	469.3			
04/23/2012	07:41:09	484	7.9	11.30	485.0			
04/23/2012	07:43:09	361	7.9	11.48	500.7			
04/23/2012	07:45:09	439	7.9	11.88	516.5			
04/23/2012	07:45:36					End Scavenger Slurry		
04/23/2012	07:45:36	423	7.9	11.93	520.0			

Well			Field		Job Start	Customer	Job Number
DW 8609 D-28			STORY GULCH		Apr/23/2012	ENCNAN	BTX1-00405
Date	Time 24-hr clock	Treating Pressure PSI	Flow Rate B/M	Density LB/G	Volume BBL	Message	
04/23/2012	07:45:50					In last 100bbls	
04/23/2012	07:45:50	410	7.9	11.98	521.9		
04/23/2012	07:46:09					Of 11.3ppg Scav	
04/23/2012	07:46:09	444	7.9	12.03	524.4		
04/23/2012	07:46:23					Reset Total, Vol = 479.40 bbl	
04/23/2012	07:46:23	428	7.9	12.07	526.2		
04/23/2012	07:46:26					Start Mixing Lead Slurry	
04/23/2012	07:46:26	451	7.9	12.08	526.6		
04/23/2012	07:46:29					173bbls @ 12ppg	
04/23/2012	07:46:29					Take WetDry Sample	
04/23/2012	07:46:29	464	7.9	12.08	527.0		
04/23/2012	07:46:30					Sample= 12ppgt	
04/23/2012	07:46:30					Sample#=13625	
04/23/2012	07:46:30	429	7.9	12.08	527.2		
04/23/2012	07:47:09	452	7.9	12.13	532.3		
04/23/2012	07:49:09	496	7.9	12.39	548.1		
04/23/2012	07:51:09	461	7.9	12.21	563.9		
04/23/2012	07:53:09	476	7.9	11.97	579.8		
04/23/2012	07:55:09	507	7.9	12.04	595.6		
04/23/2012	07:57:09	523	7.9	12.10	611.4		
04/23/2012	07:59:09	482	7.9	11.94	627.3		
04/23/2012	08:01:09	330	6.5	11.57	642.9		
04/23/2012	08:03:09	215	5.0	11.79	653.7		
04/23/2012	08:05:09	219	5.1	12.00	663.7		
04/23/2012	08:07:09	257	5.0	12.13	673.8		
04/23/2012	08:08:07					End Lead Slurry	
04/23/2012	08:08:07	216	5.0	12.06	678.7		
04/23/2012	08:09:09	268	5.0	12.69	683.9		
04/23/2012	08:09:49					Start Mixing Tail Slurry	
04/23/2012	08:09:49	293	5.0	12.99	687.3		
04/23/2012	08:09:50					240bbls @ 13ppg	
04/23/2012	08:09:50					Good Returns	
04/23/2012	08:09:50	299	5.0	12.99	687.4		
04/23/2012	08:09:51					Take WetDry Sample	
04/23/2012	08:09:51					Sample=13ppg	
04/23/2012	08:09:51					Sample#= 13548	
04/23/2012	08:09:51	299	5.0	12.99	687.4		
04/23/2012	08:11:09	489	6.4	12.93	694.9		
04/23/2012	08:13:09	496	6.4	12.99	707.8		
04/23/2012	08:15:09	506	6.4	12.99	720.7		
04/23/2012	08:17:09	495	6.4	13.03	733.5		
04/23/2012	08:19:09	477	6.4	13.01	746.4		
04/23/2012	08:21:09	535	6.4	12.99	759.3		
04/23/2012	08:23:09	499	6.5	12.98	772.2		
04/23/2012	08:25:09	478	6.4	13.01	785.0		
04/23/2012	08:27:09	496	6.4	13.04	797.9		
04/23/2012	08:29:09	523	6.5	13.01	810.8		
04/23/2012	08:31:09	514	6.4	12.97	823.7		
04/23/2012	08:33:09	485	6.4	13.00	836.6		
04/23/2012	08:35:09	485	6.4	13.02	849.5		
04/23/2012	08:37:09	469	6.5	13.01	862.3		
04/23/2012	08:39:09	474	6.4	13.00	875.2		
04/23/2012	08:41:09	495	6.4	13.02	888.1		
04/23/2012	08:43:09	489	6.4	13.01	901.0		

Well			Field		Job Start		Customer		Job Number	
DW 8609 D-28			STORY GULCH		Apr/23/2012		ENCNAN		BTX1-00405	
Date	Time 24-hr clock	Treating Pressure PSI	Flow Rate B/M	Density LB/G	Volume BBL	Message				
04/23/2012	08:47:09	497	6.4	13.08	926.7					
04/23/2012	08:47:11					End Tail Slurry				
04/23/2012	08:47:11	521	6.4	13.07	926.9					
04/23/2012	08:47:14					Drop Top Plug				
04/23/2012	08:47:14	537	6.4	13.07	927.2					
04/23/2012	08:49:09	506	6.5	13.05	939.6					
04/23/2012	08:51:09	11	0.0	13.06	944.1					
04/23/2012	08:53:09	9	0.0	13.06	944.1					
04/23/2012	08:55:09	86	3.4	9.20	948.0					
04/23/2012	08:57:09	196	4.9	8.73	957.4					
04/23/2012	08:59:09	195	4.9	8.55	967.6					
04/23/2012	09:01:09	9	0.0	2.59	977.1					
04/23/2012	09:03:09	-7	9.0	8.50	983.8					
04/23/2012	09:05:09	5	9.0	8.53	1004.1					
04/23/2012	09:07:09	196	6.3	8.48	1013.9					
04/23/2012	09:07:15					Start Displacement				
04/23/2012	09:07:15	185	6.3	8.48	1014.5					
04/23/2012	09:07:16					Reset Total, Vol = 488.45 bbl				
04/23/2012	09:07:16	191	6.3	8.48	1014.6					
04/23/2012	09:07:17					170bbbls L64 Water				
04/23/2012	09:07:17	185	6.3	8.48	1014.8					
04/23/2012	09:09:09	184	6.3	8.48	1026.6					
04/23/2012	09:11:09	185	6.3	8.47	1039.3					
04/23/2012	09:13:09	187	6.3	8.47	1051.9					
04/23/2012	09:15:09	186	6.3	8.47	1064.6					
04/23/2012	09:17:09	475	6.3	8.47	1077.3					
04/23/2012	09:19:09	707	6.3	8.47	1089.9					
04/23/2012	09:21:09	904	6.3	8.47	1102.5					
04/23/2012	09:23:09	1106	6.3	8.47	1115.0					
04/23/2012	09:25:09	1254	6.3	8.46	1127.6					
04/23/2012	09:27:09	1435	6.3	8.46	1140.1					
04/23/2012	09:29:09	1611	6.3	8.46	1152.6					
04/23/2012	09:31:09	1807	6.2	8.46	1165.1					
04/23/2012	09:33:09	1730	3.8	8.46	1173.9					
04/23/2012	09:35:09	1758	2.4	8.46	1180.1					
04/23/2012	09:36:52					30bbbls Cement				
04/23/2012	09:36:52	2404	0.0	8.46	1183.6					
04/23/2012	09:37:08					To Surface				
04/23/2012	09:37:08	2439	0.0	8.46	1183.6					
04/23/2012	09:37:09	2439	0.0	8.46	1183.6					
04/23/2012	09:37:15					Bump Top Plug				
04/23/2012	09:37:15	2344	0.0	8.46	1183.6					
04/23/2012	09:37:17					Bump To 2400psi				
04/23/2012	09:37:17	2451	0.0	8.46	1183.6					
04/23/2012	09:39:09	2459	0.0	8.46	1183.6					
04/23/2012	09:41:09	2499	0.0	8.46	1183.6					
04/23/2012	09:43:09	2541	0.0	8.46	1183.6					
04/23/2012	09:45:09	3	0.0	8.46	1183.6					
04/23/2012	09:47:09	3	0.0	8.46	1183.6					
04/23/2012	09:47:11					Floats Held				
04/23/2012	09:47:11	3	0.0	8.46	1183.6					
04/23/2012	09:47:12					End Job				
04/23/2012	09:47:12	3	0.0	8.46	1183.6					

<b>Well</b> DW 8609 D-28	<b>Field</b> STORY GULCH	<b>Job Start</b> Apr/23/2012	<b>Customer</b> ENCNAN	<b>Job Number</b> BTX1-00405
-----------------------------	-----------------------------	---------------------------------	---------------------------	---------------------------------

Post Job Summary

Average Pump Rates,					Volume of Fluid Injected,			
Slurry	N2	Mud	Maximum Rate		Total Slurry	Mud	Spacer	N2
Treating Pressure Summary,					Breakdown Fluid			
Maximum	Final	Average	Bump Plug to	Breakdown	Type	Volume		Density
Avg. N2 Percent	Designed Slurry Volume 918.0 bbl		Displacement	Mix Water Temp 62 degF	Cement Circulated to Surface? <input checked="" type="checkbox"/>	Volume		
					Washed Thru Perfs <input type="checkbox"/>	To		
Customer or Authorized Representative IRA COX			Schlumberger Supervisor JASON CRICK			Circulation Lost <input type="checkbox"/>	Job Completed <input checked="" type="checkbox"/>	
					-		-	