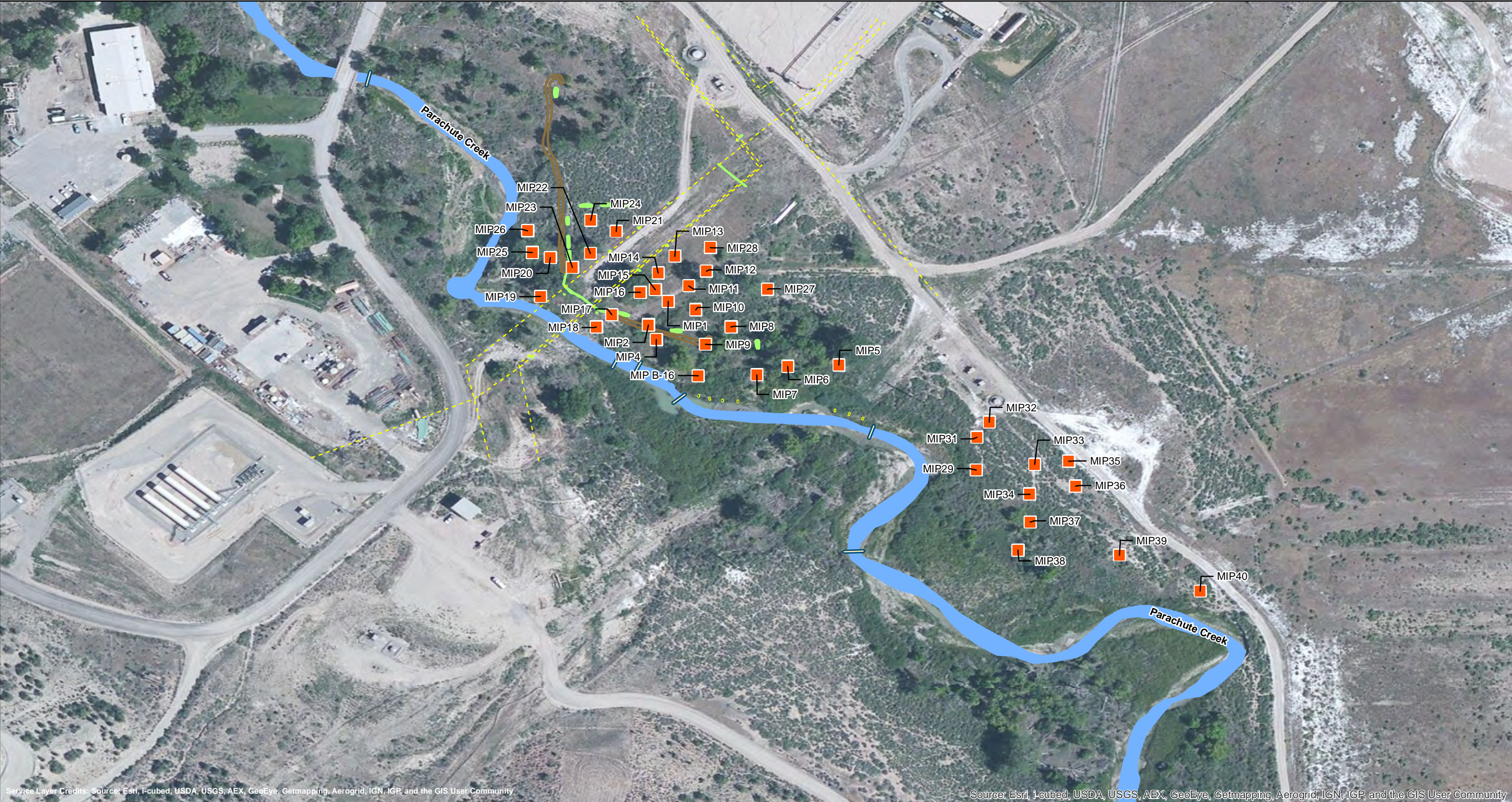


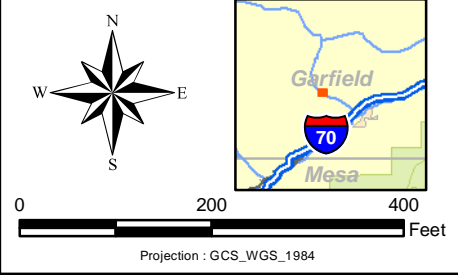
Date: 04/13/13 File Path: \\verbrin01\arcgisprod\Williams_Various\ParachuteCreek\GIS\Responses\GIS Documents\Project Maps\Daily Updates\MIP Locations\0413 Parachute MIP Locations.mxd



Service Layer Credits: Source: Esri, i-cubed, USDA, USGS, AEX, GeoEye, Getmapping, Aerogrid, IGN, IGP, and the GIS User Community

Source: Esri, i-cubed, USDA, USGS, AEX, GeoEye, Getmapping, Aerogrid, IGN, IGP, and the GIS User Community

- | | | |
|-------------------------------------|----------|--------------|
| Recovery/Test Trench | Berm | MIP Location |
| Approximate Location of Mini-Trench | Boom | |
| Parachute Creek | Pipeline | |



BARGATH LLC PARACHUTE CREEK GAS PLANT
COGCC INCIDENT NUMBER 2232359

MIP LOCATIONS - 04/13/2013
--WORKING DRAFT, SUBJECT TO ADDITIONAL DATA COLLECTION--

Shaw Environmental, Inc.
(A CB&I Company)
9201 E. Dry Creek Rd.
Centennial, CO 80112