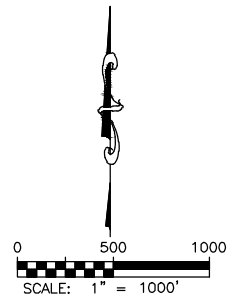
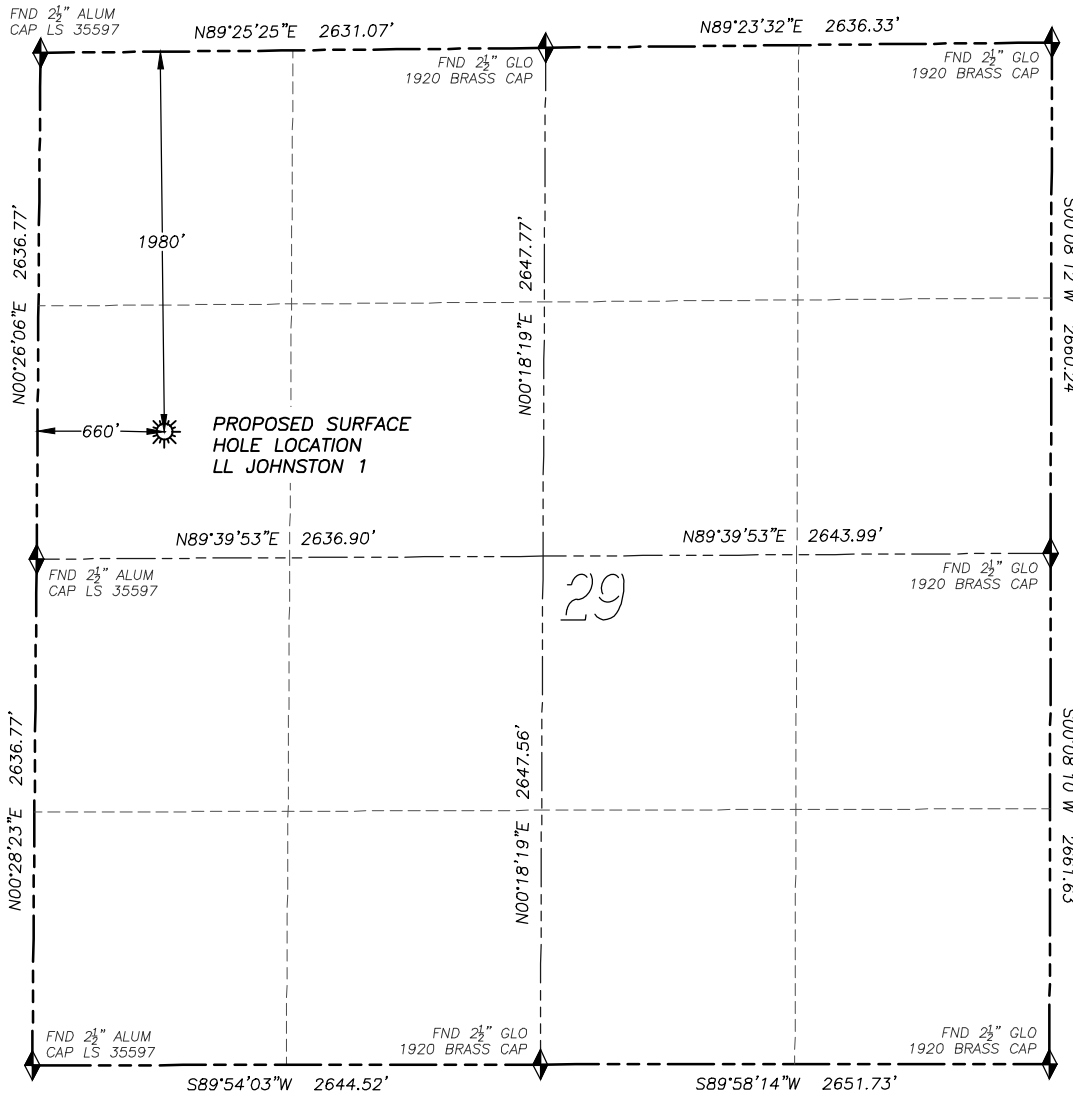


WELL LOCATION CERTIFICATE LL JOHNSTON 1

SECTION 29, TOWNSHIP 17 SOUTH, RANGE 54 WEST OF THE 6TH PRINCIPAL MERIDIAN



LEGEND

- FOUND MONUMENT AS DESCRIBED
- PROPOSED WELL
- EXISTING WELL
- BOTTOM HOLE
- ABANDONED WELL
- CALCULATED POSITION

NAD 83 LATITUDE AND LONGITUDE

LL JOHNSTON 1 SURFACE HOLE:

LATITUDE: N38.54732°
 LONGITUDE: W103.48328°
 ELEVATION: 4667'
 FOOTAGE: 1980' FNL, 660' FWL
 PDOP: 1.4
 QTR/QTR: SW4/NW4
 PROP LINE: 660'± WEST
 GPS OPERATOR: SCOTT ESTABROOKS

NEAREST EXISTING WELL:
 THERE ARE NO EXISTING
 WELLS IN THIS SECTION

IN ACCORDANCE WITH A REQUEST FROM AURORA POWER RESOURCES INC., DALEY LAND SURVEYING, INC. HAS DETERMINED THE SURFACE LOCATION OF THE LL JOHNSTON 1 WELL TO BE 1980' FNL, 660' FWL, AS MEASURED AT NINETY (90) DEGREES FROM THE SECTION LINES OF SECTION 29, TOWNSHIP 17 SOUTH, RANGE 54 WEST OF THE 6TH PRINCIPAL MERIDIAN, LINCOLN COUNTY, COLORADO.

I HEREBY CERTIFY THAT THIS WELL LOCATION CERTIFICATE WAS PREPARED BY ME OR UNDER MY DIRECT SUPERVISION, THAT THE WORK WAS COMPLETED ON 3/15/2013 FOR AND ON BEHALF OF AURORA POWER RESOURCES, INC., AND THAT THIS MAP DOES NOT REPRESENT A BOUNDARY SURVEY, IT IS NOT A LAND SURVEY PLAT OR AN IMPROVEMENT SURVEY PLAT AND IT IS NOT TO BE RELIED UPON FOR THE ESTABLISHMENT OF FENCE, BUILDING OR OTHER FUTURE IMPROVEMENT LINES.

NOTES:

- 1) BEARINGS FOR THIS MAP ARE ASSUMED AND BASED UPON GPS OBSERVATIONS MADE BETWEEN MONUMENTS LOCATED AT THE NORTHWEST CORNER AND NORTH QUARTER CORNER OF SECTION 29, T.17S., R.54W.
- 2) HORIZONTAL DATUM IS NAD83.
- 3) VERTICAL DATUM IS NAVD88 AND ORIGINATES FROM THE LOCAL C.O.R.S. NETWORK, UTILIZING THE GEOID09 MODEL.
- 4) SEE LOCATION DRAWING FOR VISIBLE IMPROVEMENTS WITHIN 400' OF PROPOSED DISTURBED AREA.
- 5) SURFACE USE: RANGELAND.



FOR AND ON BEHALF OF
 DALEY LAND SURVEYING INC.,
 Robert Daley, PLS 35597