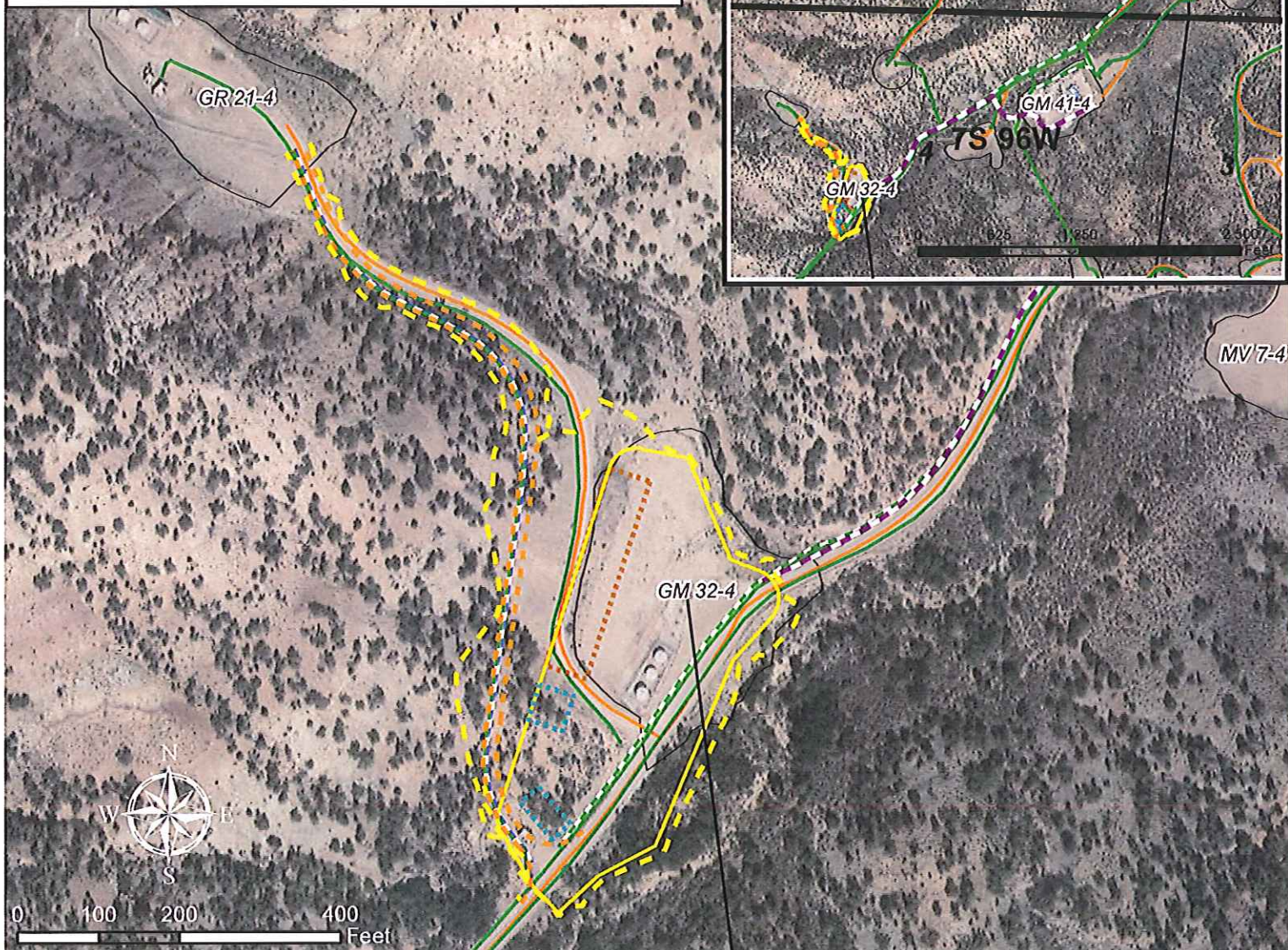


Geologist Information

General: Existing location, 1 new wells (4 existing wells)
 Ownership: Fed Surface, Fed Minerals
 SUA Status: NA
 Spacing Units: Statewide for Mancos/Niobrara
 Adjacent Owners: WPX, Oxy, Chevron, Encana



Plan of Development

Access: Existing access
 Drilling: Efficiency Rig
 Cuttings: Cuttings will be managed on the surface on the west edge of the pad and excess can be taken to GM 41-4 pad.
 SIMOPS: No
 Completions: Completions will frac on pad once rig leaves location. The existing surface water supply lines that are currently at the GM 41-4 pad will be extended to the GM 32-4 pad. We'll need to cross Riley Gulch and the lines will be cased at this point.
 Flowback: On pad
 Production: Production equipment to be on the south and south west edge of the pad. Water and condensate will be on pad. Water and condensate from the GR 21-4 will be piped down the access road to tanks on the GM 32-4 pad.
 Pipeline: Proposed 12" gas line will run from the GM 32-4 down to Midstreams 30" line upon approval. If not, will use existing 12" gas line. 3" Gas/ 4" Water lines will run from GR 21-4 in proposed road to GM 32-4.

Legend

— Proposed Road
— Proposed Cuttings Management Area
— Proposed Production Equipment Area
— Proposed Daylight Line
— Proposed Pad or Pit
— Existing Well
— Gas Pipeline
— Proposed Gas Pipeline
— Proposed Water Pipeline
— Proposed Surface Frac Water Supply
— Existing Road
 Existing Pad

WPX Energy Rocky Mountain, LLC

GM 32-4 Plan of Development
 T7S R96W, Section 4

April 9, 2013

