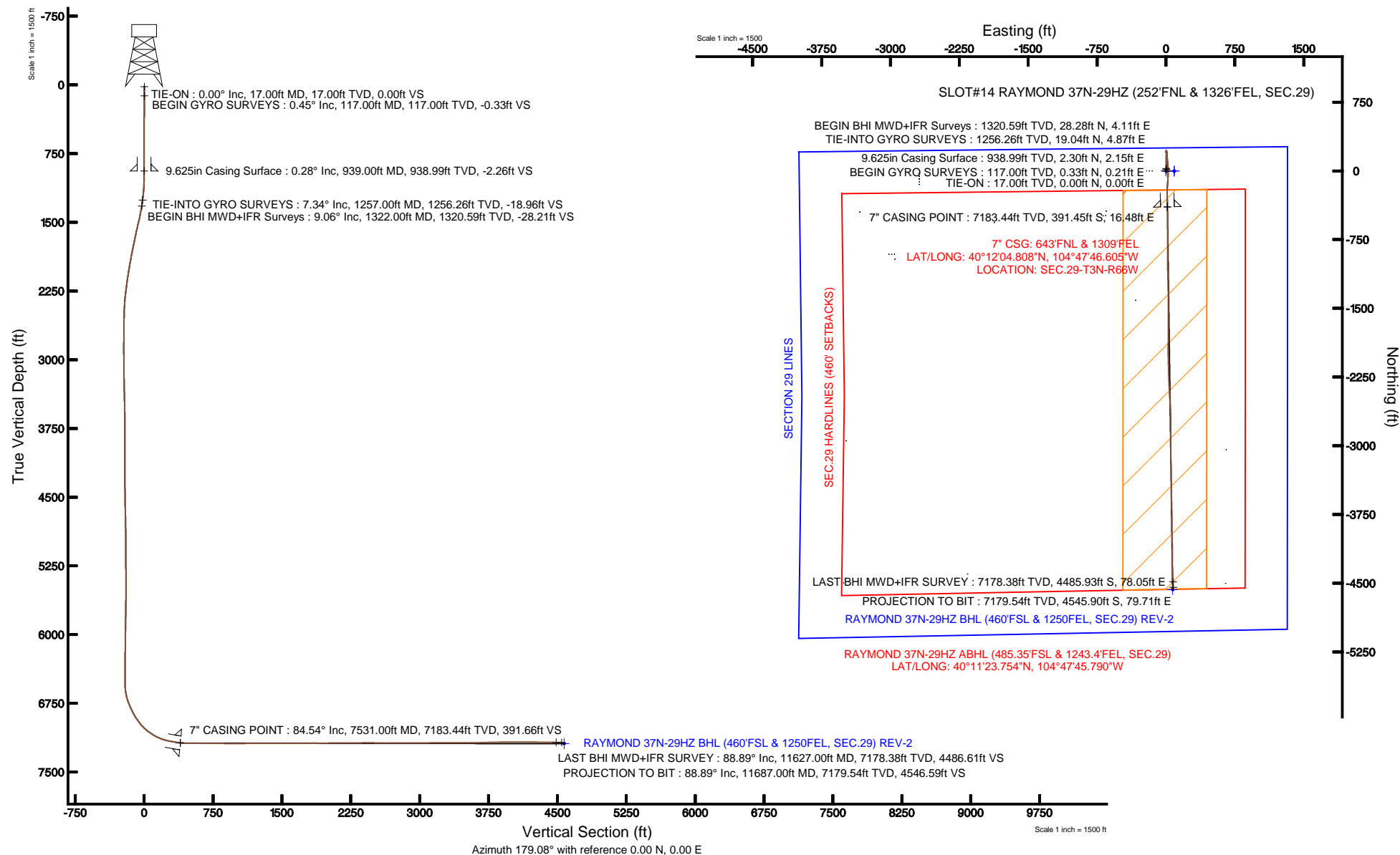


Location:	COLORADO	Slot:	SLOT#14 RAYMOND 37N-29HZ (252'FNL & 1326'FEL, SEC.29)
Field:	WELD COUNTY (KERR MCGEE)	Well:	RAYMOND 37N-29HZ
Facility:	SEC.29-T3N-R66W	Wellbore:	RAYMOND 37N-29HZ PWB

True vertical depths are referenced to XTREME 8 (RKB)	Grid System: NAD83 / Lambert Colorado SP, Northern Zone (501), US feet
Measured depths are referenced to XTREME 8 (RKB)	North Reference: True north
XTREME 8 (RKB) to Mean Sea Level: 4942 feet	Scale: True distance
Mean Sea Level to Mud line (At Slot: SLOT#14 RAYMOND 37N-29HZ (252FNL & 1326FEL, SEC.29): 0 feet	Depths are in feet
Coordinates are in feet referenced to Slot	Created by: wslje02 on 3/6/2013





Actual Wellpath Report

RAYMOND 37N-29HZ AWP

Page 1 of 7



REFERENCE WELLPATH IDENTIFICATION

Operator	KERR-MCGEE OIL & GAS ONSHORE LP	Slot	SLOT#14 RAYMOND 37N-29HZ (252'FNL & 1326'FEL, SEC.29)
Area	COLORADO	Well	RAYMOND 37N-29HZ
Field	WELD COUNTY (KERR MCGEE)	Wellbore	RAYMOND 37N-29HZ AWB
Facility	SEC.29-T3N-R66W		

REPORT SETUP INFORMATION

Projection System	NAD83 / Lambert Colorado SP, Northern Zone (501), US feet	Software System	WellArchitect® 3.0.2
North Reference	True	User	Wilsjef02
Scale	0.999957	Report Generated	3/6/2013 at 12:05:21
Convergence at slot	0.45° East	Database/Source file	WellArchitectDB/RAYMOND_37N-29HZ_AWB.xml

WELLPATH LOCATION

	Local coordinates		Grid coordinates		Geographic coordinates	
	North[ft]	East[ft]	Easting[US ft]	Northing[US ft]	Latitude	Longitude
Slot Location	910.92	2953.11	3196546.26	1317360.21	40°12'08.676"N	104°47'46.817"W
Facility Reference Pt			3193600.49	1316426.28	40°11'59.676"N	104°48'24.876"W
Field Reference Pt			3197771.84	1268891.29	40°04'09.600"N	104°47'36.000"W

WELLPATH DATUM

Calculation method	Minimum curvature	XTREME 8 (RKB) to Facility Vertical Datum	4942.00ft
Horizontal Reference Pt	Slot	XTREME 8 (RKB) to Mean Sea Level	4942.00ft
Vertical Reference Pt	XTREME 8 (RKB)	XTREME 8 (RKB) to Mud Line at Slot (SLOT#14 RAYMOND 37N-29HZ (252'FNL & 1326'FEL, SEC.29))	4942.00ft
MD Reference Pt	XTREME 8 (RKB)	Section Origin	N 0.00, E 0.00 ft
Field Vertical Reference	Mean Sea Level	Section Azimuth	179.00°



Actual Wellpath Report

RAYMOND 37N-29HZ AWP

Page 2 of 7



REFERENCE WELLPATH IDENTIFICATION

Operator	KERR-MCGEE OIL & GAS ONSHORE LP	Slot	SLOT#14 RAYMOND 37N-29HZ (252'FNL & 1326'FEL, SEC.29)
Area	COLORADO	Well	RAYMOND 37N-29HZ
Field	WELD COUNTY (KERR MCGEE)	Wellbore	RAYMOND 37N-29HZ AWB
Facility	SEC.29-T3N-R66W		

WELLPATH DATA (158 stations) † = interpolated/extrapolated station

MD [ft]	Inclination [°]	Azimuth [°]	TVD [ft]	Vert Sect [ft]	North [ft]	East [ft]	Latitude	Longitude	DLS [°/100ft]	Comments
0.00†	0.000	32.390	0.00	0.00	0.00	0.00	40°12'08.676"N	104°47'46.817"W	0.00	
17.00	0.000	32.390	17.00	0.00	0.00	0.00	40°12'08.676"N	104°47'46.817"W	0.00	TIE-ON
117.00	0.450	32.390	117.00	-0.33	0.33	0.21	40°12'08.679"N	104°47'46.814"W	0.45	BEGIN GYRO SURVEYS
217.00	0.200	16.520	217.00	-0.82	0.83	0.47	40°12'08.684"N	104°47'46.811"W	0.26	
317.00	0.280	64.550	317.00	-1.09	1.10	0.74	40°12'08.687"N	104°47'46.807"W	0.21	
417.00	0.190	7.190	417.00	-1.35	1.37	0.98	40°12'08.690"N	104°47'46.804"W	0.24	
517.00	0.300	53.400	516.99	-1.67	1.69	1.21	40°12'08.693"N	104°47'46.801"W	0.22	
617.00	0.220	12.140	616.99	-2.01	2.04	1.46	40°12'08.696"N	104°47'46.798"W	0.20	
717.00	0.380	109.530	716.99	-2.08	2.11	1.82	40°12'08.697"N	104°47'46.794"W	0.46	
817.00	0.330	2.280	816.99	-2.25	2.29	2.14	40°12'08.699"N	104°47'46.789"W	0.57	
902.00	0.230	158.970	901.99	-2.34	2.38	2.21	40°12'08.699"N	104°47'46.789"W	0.65	
956.00	0.450	277.166	955.99	-2.26	2.30	2.04	40°12'08.699"N	104°47'46.791"W	1.10	
984.00	0.133	60.546	983.99	-2.30	2.33	1.96	40°12'08.699"N	104°47'46.792"W	2.01	
1016.00	0.487	333.639	1015.99	-2.44	2.47	1.93	40°12'08.700"N	104°47'46.792"W	1.56	
1045.00	1.517	5.735	1044.99	-2.93	2.96	1.91	40°12'08.705"N	104°47'46.792"W	3.91	
1075.00	2.585	29.222	1074.97	-3.91	3.95	2.28	40°12'08.715"N	104°47'46.788"W	4.46	
1107.00	3.435	22.380	1106.92	-5.41	5.47	3.00	40°12'08.730"N	104°47'46.778"W	2.88	
1137.00	3.813	11.110	1136.86	-7.21	7.28	3.54	40°12'08.748"N	104°47'46.771"W	2.68	
1165.00	4.813	10.149	1164.78	-9.27	9.34	3.92	40°12'08.768"N	104°47'46.766"W	3.58	
1197.00	5.977	6.044	1196.64	-12.25	12.32	4.33	40°12'08.798"N	104°47'46.761"W	3.83	
1227.00	6.295	8.540	1226.47	-15.42	15.50	4.74	40°12'08.829"N	104°47'46.756"W	1.38	
1257.00	7.336	356.379	1256.26	-18.95	19.04	4.87	40°12'08.864"N	104°47'46.754"W	5.91	TIE-INTO GYRO SURVEYS
1322.00	9.060	354.410	1320.59	-28.20	28.28	4.11	40°12'08.955"N	104°47'46.764"W	2.69	BEGIN BHI MWD+IFR Surveys
1415.00	11.600	356.950	1412.08	-44.85	44.90	2.90	40°12'09.120"N	104°47'46.780"W	2.77	
1500.00	12.890	0.010	1495.14	-62.87	62.92	2.44	40°12'09.298"N	104°47'46.786"W	1.70	
1585.00	12.800	2.920	1578.02	-81.74	81.80	2.92	40°12'09.484"N	104°47'46.779"W	0.77	
1670.00	11.710	358.630	1661.08	-99.76	99.83	3.20	40°12'09.663"N	104°47'46.776"W	1.67	
1756.00	11.680	359.190	1745.29	-117.19	117.26	2.87	40°12'09.835"N	104°47'46.780"W	0.14	
1841.00	11.360	3.300	1828.58	-134.14	134.22	3.23	40°12'10.002"N	104°47'46.775"W	1.04	
1926.00	10.330	359.510	1912.07	-150.11	150.20	3.64	40°12'10.160"N	104°47'46.770"W	1.47	
2012.00	9.540	4.880	1996.78	-164.91	165.01	4.18	40°12'10.307"N	104°47'46.763"W	1.41	
2097.00	8.570	1.630	2080.72	-178.25	178.36	4.96	40°12'10.439"N	104°47'46.753"W	1.29	
2182.00	8.350	357.680	2164.79	-190.74	190.86	4.89	40°12'10.562"N	104°47'46.754"W	0.73	
2267.00	7.000	355.870	2249.03	-202.09	202.19	4.27	40°12'10.674"N	104°47'46.762"W	1.61	
2353.00	4.960	354.680	2334.56	-211.03	211.12	3.55	40°12'10.762"N	104°47'46.771"W	2.38	
2438.00	3.080	350.870	2419.34	-216.95	217.04	2.84	40°12'10.821"N	104°47'46.780"W	2.23	
2523.00	1.450	333.670	2504.28	-220.19	220.25	2.00	40°12'10.853"N	104°47'46.791"W	2.06	
2608.00	0.250	256.450	2589.27	-221.12	221.18	1.35	40°12'10.862"N	104°47'46.800"W	1.67	
2694.00	0.770	343.790	2675.26	-221.63	221.69	1.00	40°12'10.867"N	104°47'46.804"W	0.93	
2779.00	0.940	337.420	2760.25	-222.83	222.88	0.58	40°12'10.878"N	104°47'46.810"W	0.23	
2864.00	0.100	295.340	2845.25	-223.52	223.55	0.24	40°12'10.885"N	104°47'46.814"W	1.02	
2950.00	0.250	237.800	2931.25	-223.45	223.49	0.01	40°12'10.884"N	104°47'46.817"W	0.25	
3035.00	0.340	225.710	3016.25	-223.18	223.21	-0.32	40°12'10.882"N	104°47'46.821"W	0.13	
3120.00	0.810	150.540	3101.24	-222.48	222.51	-0.21	40°12'10.875"N	104°47'46.820"W	0.93	
3206.00	1.290	137.600	3187.23	-221.22	221.27	0.74	40°12'10.863"N	104°47'46.807"W	0.62	

REFERENCE WELLPATH IDENTIFICATION

Operator	KERR-MCGEE OIL & GAS ONSHORE LP	Slot	SLOT#14 RAYMOND 37N-29HZ (252'FNL & 1326'FEL, SEC.29)
Area	COLORADO	Well	RAYMOND 37N-29HZ
Field	WELD COUNTY (KERR MCGEE)	Wellbore	RAYMOND 37N-29HZ AWB
Facility	SEC.29-T3N-R66W		

WELLPATH DATA (158 stations)

MD [ft]	Inclination [°]	Azimuth [°]	TVD [ft]	Vert Sect [ft]	North [ft]	East [ft]	Latitude	Longitude	DLS [°/100ft]	Comments
3291.00	1.220	144.150	3272.21	-219.76	219.83	1.92	40°12'10.848"N	104°47'46.792"W	0.19	
3376.00	1.350	188.310	3357.19	-218.03	218.10	2.30	40°12'10.831"N	104°47'46.787"W	1.15	
3462.00	1.720	211.750	3443.16	-215.94	216.00	1.48	40°12'10.811"N	104°47'46.798"W	0.84	
3547.00	0.980	187.730	3528.14	-214.15	214.20	0.71	40°12'10.793"N	104°47'46.808"W	1.08	
3632.00	0.790	150.170	3613.13	-212.92	212.97	0.90	40°12'10.781"N	104°47'46.805"W	0.70	
3717.00	0.560	76.040	3698.12	-212.50	212.56	1.60	40°12'10.777"N	104°47'46.796"W	0.98	
3803.00	0.560	57.970	3784.12	-212.81	212.89	2.36	40°12'10.780"N	104°47'46.787"W	0.20	
3888.00	0.390	82.540	3869.12	-213.06	213.14	3.00	40°12'10.782"N	104°47'46.778"W	0.31	
3973.00	0.220	213.640	3954.11	-212.96	213.05	3.20	40°12'10.781"N	104°47'46.775"W	0.66	
4058.00	0.160	236.020	4039.11	-212.76	212.84	3.01	40°12'10.779"N	104°47'46.778"W	0.11	
4143.00	0.220	144.660	4124.11	-212.56	212.64	3.00	40°12'10.777"N	104°47'46.778"W	0.32	
4229.00	0.280	192.060	4210.11	-212.22	212.30	3.06	40°12'10.774"N	104°47'46.778"W	0.24	
4314.00	0.530	144.680	4295.11	-211.69	211.78	3.24	40°12'10.769"N	104°47'46.775"W	0.47	
4399.00	0.370	188.050	4380.11	-211.09	211.19	3.43	40°12'10.763"N	104°47'46.773"W	0.43	
4484.00	0.980	226.300	4465.10	-210.33	210.41	2.87	40°12'10.755"N	104°47'46.780"W	0.85	
4570.00	0.750	181.290	4551.09	-209.27	209.34	2.32	40°12'10.745"N	104°47'46.787"W	0.81	
4655.00	1.680	140.330	4636.08	-207.74	207.83	3.10	40°12'10.730"N	104°47'46.777"W	1.43	
4740.00	1.620	141.030	4721.04	-205.82	205.93	4.65	40°12'10.711"N	104°47'46.757"W	0.07	
4825.00	1.320	152.550	4806.01	-204.00	204.13	5.86	40°12'10.693"N	104°47'46.741"W	0.49	
4911.00	1.030	101.230	4892.00	-202.95	203.10	7.08	40°12'10.683"N	104°47'46.726"W	1.22	
4996.00	0.940	105.810	4976.98	-202.58	202.76	8.50	40°12'10.680"N	104°47'46.707"W	0.14	
5081.00	0.770	114.130	5061.97	-202.14	202.34	9.69	40°12'10.676"N	104°47'46.692"W	0.25	
5167.00	0.370	113.490	5147.97	-201.78	201.99	10.47	40°12'10.672"N	104°47'46.682"W	0.47	
5252.00	0.430	151.960	5232.97	-201.38	201.60	10.87	40°12'10.668"N	104°47'46.677"W	0.32	
5337.00	0.440	177.250	5317.97	-200.77	200.99	11.04	40°12'10.662"N	104°47'46.675"W	0.22	
5422.00	0.360	268.890	5402.96	-200.44	200.66	10.79	40°12'10.659"N	104°47'46.678"W	0.68	
5508.00	0.610	265.820	5488.96	-200.42	200.62	10.06	40°12'10.659"N	104°47'46.687"W	0.29	
5593.00	0.180	330.870	5573.96	-200.51	200.71	9.54	40°12'10.659"N	104°47'46.694"W	0.66	
5678.00	1.110	30.580	5658.95	-201.33	201.53	9.90	40°12'10.668"N	104°47'46.689"W	1.21	
5763.00	0.730	8.670	5743.94	-202.56	202.78	10.40	40°12'10.680"N	104°47'46.683"W	0.60	
5849.00	0.710	335.550	5829.94	-203.59	203.80	10.26	40°12'10.690"N	104°47'46.685"W	0.48	
5934.00	1.170	21.880	5914.93	-204.88	205.09	10.37	40°12'10.703"N	104°47'46.683"W	1.00	
6019.00	0.880	13.400	5999.91	-206.31	206.53	10.84	40°12'10.717"N	104°47'46.677"W	0.38	
6100.00	0.700	8.600	6080.90	-207.40	207.62	11.06	40°12'10.728"N	104°47'46.674"W	0.24	
6185.00	0.550	346.230	6165.90	-208.31	208.53	11.04	40°12'10.737"N	104°47'46.675"W	0.33	
6270.00	0.690	289.740	6250.89	-208.89	209.10	10.46	40°12'10.742"N	104°47'46.682"W	0.71	
6356.00	0.730	286.150	6336.89	-209.23	209.43	9.45	40°12'10.746"N	104°47'46.695"W	0.07	
6441.00	0.740	287.170	6421.88	-209.56	209.74	8.40	40°12'10.749"N	104°47'46.709"W	0.02	
6526.00	0.670	280.310	6506.87	-209.83	209.99	7.39	40°12'10.751"N	104°47'46.722"W	0.13	
6569.00	0.310	201.140	6549.87	-209.77	209.93	7.10	40°12'10.751"N	104°47'46.726"W	1.59	
6611.00	4.420	161.140	6591.83	-208.13	208.29	7.58	40°12'10.734"N	104°47'46.719"W	9.97	
6654.00	10.120	169.000	6634.47	-202.82	203.01	8.84	40°12'10.682"N	104°47'46.703"W	13.43	
6697.00	14.120	173.790	6676.50	-193.88	194.08	10.13	40°12'10.594"N	104°47'46.686"W	9.58	
6739.00	18.440	175.480	6716.81	-182.14	182.36	11.21	40°12'10.478"N	104°47'46.673"W	10.35	
6782.00	21.470	175.250	6757.22	-167.50	167.74	12.39	40°12'10.334"N	104°47'46.657"W	7.05	



Actual Wellpath Report

RAYMOND 37N-29HZ AWP

Page 4 of 7



REFERENCE WELLPATH IDENTIFICATION

Operator	KERR-MCGEE OIL & GAS ONSHORE LP	Slot	SLOT#14 RAYMOND 37N-29HZ (252'FNL & 1326'FEL, SEC.29)
Area	COLORADO	Well	RAYMOND 37N-29HZ
Field	WELD COUNTY (KERR MCGEE)	Wellbore	RAYMOND 37N-29HZ AWB
Facility	SEC.29-T3N-R66W		

WELLPATH DATA (158 stations) † = interpolated/extrapolated station

MD [ft]	Inclination [°]	Azimuth [°]	TVD [ft]	Vert Sect [ft]	North [ft]	East [ft]	Latitude	Longitude	DLS [°/100ft]	Comments
6825.00	23.900	175.610	6796.89	-150.95	151.21	13.71	40°12'10.170"N	104°47'46.640"W	5.66	
6867.00	26.200	176.640	6834.94	-133.19	133.47	14.91	40°12'09.995"N	104°47'46.625"W	5.57	
6910.00	29.210	174.670	6873.01	-113.23	113.54	16.44	40°12'09.798"N	104°47'46.605"W	7.32	
6953.00	32.650	174.210	6909.89	-91.21	91.55	18.58	40°12'09.581"N	104°47'46.577"W	8.02	
6995.00	35.690	175.360	6944.63	-67.68	68.06	20.72	40°12'09.349"N	104°47'46.550"W	7.40	
7038.00	39.860	176.550	6978.61	-41.39	41.79	22.56	40°12'09.089"N	104°47'46.526"W	9.84	
7081.00	44.450	178.210	7010.48	-12.55	12.97	23.86	40°12'08.804"N	104°47'46.509"W	10.98	
7123.00	49.050	181.060	7039.26	18.03	-17.61	24.03	40°12'08.502"N	104°47'46.507"W	12.01	
7166.00	53.440	181.960	7066.17	51.52	-51.12	23.14	40°12'08.171"N	104°47'46.519"W	10.34	
7209.00	57.900	183.320	7090.41	86.94	-86.58	21.49	40°12'07.820"N	104°47'46.540"W	10.70	
7251.00	61.930	183.980	7111.46	123.16	-122.84	19.17	40°12'07.462"N	104°47'46.570"W	9.69	
7294.00	66.300	184.010	7130.23	161.69	-161.42	16.48	40°12'07.081"N	104°47'46.605"W	10.16	
7336.00	71.560	181.840	7145.32	200.77	-200.55	14.49	40°12'06.694"N	104°47'46.630"W	13.42	
7379.00	76.220	180.050	7157.25	242.05	-241.84	13.82	40°12'06.286"N	104°47'46.639"W	11.55	
7422.00	79.130	178.820	7166.43	284.05	-283.84	14.24	40°12'05.871"N	104°47'46.634"W	7.32	
7465.00	80.200	178.780	7174.15	326.35	-326.14	15.12	40°12'05.453"N	104°47'46.622"W	2.49	
7507.00	82.020	178.760	7180.64	367.84	-367.62	16.01	40°12'05.043"N	104°47'46.611"W	4.33	
7531.00†	84.543	178.990	7183.44	391.68	-391.45	16.48	40°12'04.808"N	104°47'46.605"W	10.55	7" CASING POINT
7550.00	86.540	179.170	7184.92	410.62	-410.39	16.79	40°12'04.621"N	104°47'46.601"W	10.55	
7650.00	89.940	179.090	7187.99	510.56	-510.31	18.30	40°12'03.633"N	104°47'46.581"W	3.40	
7735.00	89.910	180.080	7188.10	595.55	-595.31	18.92	40°12'02.793"N	104°47'46.573"W	1.17	
7821.00	89.820	180.090	7188.31	681.53	-681.31	18.79	40°12'01.943"N	104°47'46.575"W	0.11	
7906.00	89.380	179.360	7188.90	766.53	-766.31	19.20	40°12'01.103"N	104°47'46.570"W	1.00	
7991.00	88.550	180.550	7190.43	851.50	-851.29	19.27	40°12'00.264"N	104°47'46.569"W	1.71	
8076.00	89.660	180.150	7191.76	936.46	-936.28	18.75	40°11'59.424"N	104°47'46.575"W	1.39	
8162.00	90.580	179.820	7191.58	1022.45	-1022.28	18.77	40°11'58.574"N	104°47'46.575"W	1.14	
8247.00	90.770	178.520	7190.58	1107.44	-1107.26	20.00	40°11'57.734"N	104°47'46.559"W	1.55	
8332.00	90.300	178.580	7189.79	1192.43	-1192.23	22.15	40°11'56.894"N	104°47'46.532"W	0.56	
8418.00	89.900	178.540	7189.64	1278.43	-1278.20	24.31	40°11'56.045"N	104°47'46.504"W	0.47	
8503.00	90.120	180.280	7189.62	1363.42	-1363.19	25.19	40°11'55.205"N	104°47'46.492"W	2.06	
8588.00	90.330	179.810	7189.29	1448.41	-1448.19	25.12	40°11'54.365"N	104°47'46.493"W	0.61	
8673.00	89.750	179.810	7189.23	1533.40	-1533.19	25.40	40°11'53.525"N	104°47'46.490"W	0.68	
8758.00	89.690	179.940	7189.64	1618.39	-1618.19	25.59	40°11'52.685"N	104°47'46.487"W	0.17	
8844.00	90.580	179.920	7189.44	1704.38	-1704.19	25.69	40°11'51.835"N	104°47'46.486"W	1.04	
8929.00	90.860	180.190	7188.37	1789.36	-1789.18	25.61	40°11'50.995"N	104°47'46.487"W	0.46	
9014.00	90.980	180.980	7187.01	1874.31	-1874.17	24.74	40°11'50.156"N	104°47'46.498"W	0.94	
9099.00	90.490	179.840	7185.92	1959.28	-1959.15	24.14	40°11'49.316"N	104°47'46.506"W	1.46	
9185.00	90.250	178.640	7185.36	2045.27	-2045.14	25.28	40°11'48.466"N	104°47'46.491"W	1.42	
9271.00	90.030	178.480	7185.15	2131.27	-2131.12	27.44	40°11'47.616"N	104°47'46.463"W	0.32	
9356.00	90.250	179.000	7184.95	2216.27	-2216.09	29.31	40°11'46.777"N	104°47'46.439"W	0.66	
9441.00	90.930	176.650	7184.07	2301.24	-2301.02	32.53	40°11'45.937"N	104°47'46.398"W	2.88	
9527.00	90.620	177.510	7182.91	2387.18	-2386.90	36.91	40°11'45.089"N	104°47'46.341"W	1.06	
9612.00	89.600	176.380	7182.74	2472.13	-2471.78	41.44	40°11'44.250"N	104°47'46.283"W	1.79	
9697.00	89.420	175.730	7183.47	2557.01	-2556.57	47.29	40°11'43.412"N	104°47'46.208"W	0.79	
9782.00	89.720	177.870	7184.11	2641.94	-2641.43	52.04	40°11'42.573"N	104°47'46.146"W	2.54	



Actual Wellpath Report

RAYMOND 37N-29HZ AWP

Page 5 of 7



REFERENCE WELLPATH IDENTIFICATION

Operator	KERR-MCGEE OIL & GAS ONSHORE LP	Slot	SLOT#14 RAYMOND 37N-29HZ (252'FNL & 1326'FEL, SEC.29)
Area	COLORADO	Well	RAYMOND 37N-29HZ
Field	WELD COUNTY (KERR MCGEE)	Wellbore	RAYMOND 37N-29HZ AWB
Facility	SEC.29-T3N-R66W		

WELLPATH DATA (158 stations)

MD [ft]	Inclination [°]	Azimuth [°]	TVD [ft]	Vert Sect [ft]	North [ft]	East [ft]	Latitude	Longitude	DLS [°/100ft]	Comments
9868.00	90.250	180.400	7184.13	2727.93	-2727.42	53.33	40°11'41.724"N	104°47'46.130"W	3.01	
9953.00	90.030	179.460	7183.92	2812.92	-2812.42	53.44	40°11'40.884"N	104°47'46.128"W	1.14	
10039.00	90.180	180.350	7183.77	2898.91	-2898.41	53.58	40°11'40.034"N	104°47'46.127"W	1.05	
10124.00	89.600	180.220	7183.93	2983.89	-2983.41	53.16	40°11'39.194"N	104°47'46.132"W	0.70	
10209.00	90.770	179.150	7183.65	3068.88	-3068.41	53.62	40°11'38.354"N	104°47'46.126"W	1.87	
10295.00	90.620	179.130	7182.61	3154.87	-3154.39	54.91	40°11'37.504"N	104°47'46.109"W	0.18	
10380.00	90.520	178.560	7181.77	3239.87	-3239.37	56.63	40°11'36.665"N	104°47'46.087"W	0.68	
10465.00	90.220	179.420	7181.22	3324.86	-3324.35	58.13	40°11'35.825"N	104°47'46.068"W	1.07	
10551.00	90.240	179.440	7180.87	3410.86	-3410.35	58.98	40°11'34.975"N	104°47'46.057"W	0.03	
10636.00	89.260	178.990	7181.24	3495.86	-3495.34	60.15	40°11'34.135"N	104°47'46.042"W	1.27	
10721.00	89.870	178.890	7181.89	3580.85	-3580.32	61.72	40°11'33.295"N	104°47'46.022"W	0.73	
10806.00	92.240	178.350	7180.32	3665.83	-3665.28	63.77	40°11'32.456"N	104°47'45.995"W	2.86	
10892.00	91.080	178.530	7177.83	3751.79	-3751.21	66.11	40°11'31.607"N	104°47'45.965"W	1.36	
10977.00	91.360	181.010	7176.02	3836.76	-3836.18	66.45	40°11'30.767"N	104°47'45.961"W	2.94	
11062.00	90.210	178.950	7174.86	3921.73	-3921.17	66.48	40°11'29.927"N	104°47'45.960"W	2.78	
11147.00	90.150	178.910	7174.59	4006.73	-4006.15	68.06	40°11'29.087"N	104°47'45.940"W	0.08	
11233.00	90.640	177.730	7174.00	4092.72	-4092.11	70.58	40°11'28.238"N	104°47'45.907"W	1.49	
11318.00	89.140	181.520	7174.16	4177.70	-4177.09	71.14	40°11'27.398"N	104°47'45.900"W	4.80	
11403.00	89.440	178.970	7175.21	4262.66	-4262.08	70.78	40°11'26.558"N	104°47'45.905"W	3.02	
11488.00	89.160	177.970	7176.25	4347.65	-4347.04	73.05	40°11'25.719"N	104°47'45.876"W	1.22	
11574.00	89.190	177.730	7177.49	4433.62	-4432.97	76.27	40°11'24.869"N	104°47'45.834"W	0.28	
11627.00	88.890	178.420	7178.38	4486.61	-4485.93	78.05	40°11'24.346"N	104°47'45.811"W	1.42	LAST BHI MWD+IFR SURVEY
11687.00	88.890	178.420	7179.54	4546.60	-4545.90	79.71	40°11'23.754"N	104°47'45.790"W	0.00	PROJECTION TO BIT

HOLE & CASING SECTIONS - Ref Wellbore: RAYMOND 37N-29HZ AWB Ref Wellpath: RAYMOND 37N-29HZ AWP

String/Diameter	Start MD [ft]	End MD [ft]	Interval [ft]	Start TVD [ft]	End TVD [ft]	Start N/S [ft]	Start E/W [ft]	End N/S [ft]	End E/W [ft]
12.25in Open Hole	17.00	939.00	922.00	17.00	938.99	0.00	0.00	2.30	2.15
9.625in Casing Surface	17.00	939.00	922.00	17.00	938.99	0.00	0.00	2.30	2.15
8.75in Open Hole	939.00	7599.00	6660.00	938.99	7187.17	2.30	2.15	-459.33	17.51
7in Casing Intermediate	17.00	7531.00	7514.00	17.00	7183.44	0.00	0.00	-391.45	16.48
6.125in Open Hole	7531.00	11687.00	4156.00	7183.44	7179.54	-391.45	16.48	-4545.90	79.71



Actual Wellpath Report

RAYMOND 37N-29HZ AWP

Page 6 of 7



REFERENCE WELLPATH IDENTIFICATION

Operator	KERR-MCGEE OIL & GAS ONSHORE LP	Slot	SLOT#14 RAYMOND 37N-29HZ (252'FNL & 1326'FEL, SEC.29)
Area	COLORADO	Well	RAYMOND 37N-29HZ
Field	WELD COUNTY (KERR MCGEE)	Wellbore	RAYMOND 37N-29HZ AWB
Facility	SEC.29-T3N-R66W		

TARGETS

Name	MD [ft]	TVD [ft]	North [ft]	East [ft]	Grid East [US ft]	Grid North [US ft]	Latitude	Longitude	Shape
RAYMOND PAD SECTION LINES		0.00	-0.71	89.93	3196636.19	1317360.22	40°12'08.669"N	104°47'45.658"W	polygon
RAYMOND 37N-29HZ LAND BOX		7100.00	0.00	0.00	3196546.26	1317360.21	40°12'08.676"N	104°47'46.817"W	polygon
RAYMOND 37N-29HZ BHL (460'FSL & 1250'FEL, SEC.29) REV-2		7192.00	-4571.25	73.11	3196655.64	1312789.89	40°11'23.503"N	104°47'45.875"W	point
RAYMOND 37N-29HZ BHL ON PLAT (460'FSL & 1415'FEL, SEC.29) REV-1		7192.00	-4571.25	-91.89	3196490.65	1312788.59	40°11'23.503"N	104°47'48.001"W	point
RAYMOND PAD HARDLINES (460' SETBACKS)		7500.00	-0.71	89.93	3196636.19	1317360.22	40°12'08.669"N	104°47'45.658"W	polygon

WELLPATH COMPOSITION - Ref Wellbore: RAYMOND 37N-29HZ AWB Ref Wellpath: RAYMOND 37N-29HZ AWP

Start MD [ft]	End MD [ft]	Positional Uncertainty Model	Log Name/Comment	Wellbore
17.00	1257.00	Generic gyro - continuous (Standard)	GYRODATA SURVEYS <117-1257>	RAYMOND 37N-29HZ AWB
1257.00	7550.00	NaviTrak (MAGCORR,IFR)	BHI MWD+IFR SURVEYS 8 3/4" HOLE <1322-7550>	RAYMOND 37N-29HZ AWB
7550.00	11627.00	OnTrak (MAGCORR,IFR)	BHI MWD+IFR SURVEYS 6 1/8" HOLE <7650-11627>	RAYMOND 37N-29HZ AWB
11627.00	11687.00	Blind Drilling (std)	Projection to bit	RAYMOND 37N-29HZ AWB



Actual Wellpath Report

RAYMOND 37N-29HZ AWP

Page 7 of 7



REFERENCE WELLPATH IDENTIFICATION

Operator	KERR-MCGEE OIL & GAS ONSHORE LP	Slot	SLOT#14 RAYMOND 37N-29HZ (252'FNL & 1326'FEL, SEC.29)
Area	COLORADO	Well	RAYMOND 37N-29HZ
Field	WELD COUNTY (KERR MCGEE)	Wellbore	RAYMOND 37N-29HZ AWB
Facility	SEC.29-T3N-R66W		

WELLPATH COMMENTS

MD [ft]	Inclination [°]	Azimuth [°]	TVD [ft]	Comment
17.00	0.000	32.390	17.00	TIE-ON
117.00	0.450	32.390	117.00	BEGIN GYRO SURVEYS
1257.00	7.336	356.379	1256.26	TIE-INTO GYRO SURVEYS
1322.00	9.060	354.410	1320.59	BEGIN BHI MWD+IFR Surveys
7531.00	84.543	178.990	7183.44	7" CASING POINT
11627.00	88.890	178.420	7178.38	LAST BHI MWD+IFR SURVEY
11687.00	88.890	178.420	7179.54	PROJECTION TO BIT