

ENSIGN

Directional

Well Name: State 36-3ST

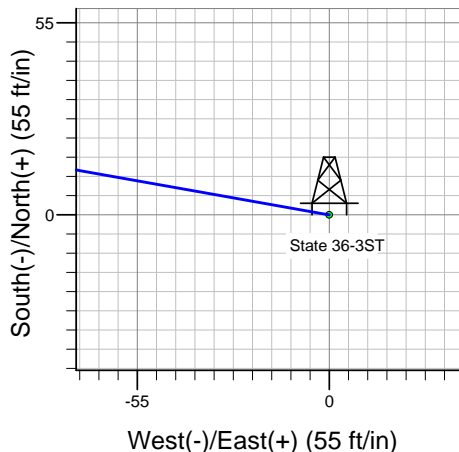
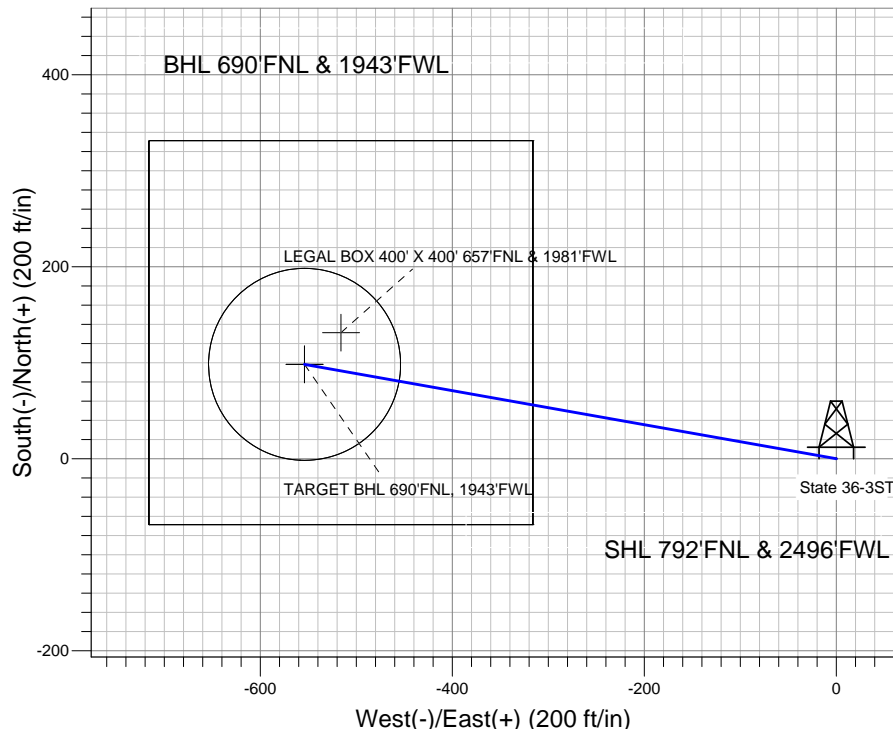
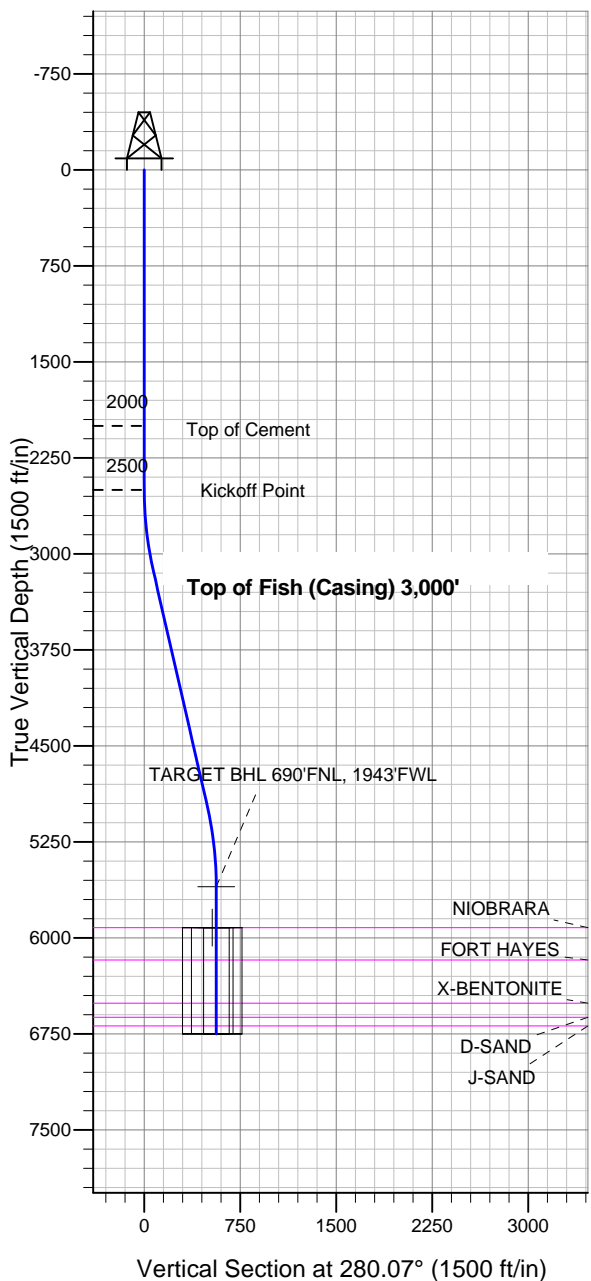
Surface Location: State 36-3ST Pad Sec.36-T6N-R61W
North American Datum 1983 US State Plane 1983 Colorado Northern Zone

Ground Elevation: 4629.0

+N/-S	+E/-W	Northing	Easting	Latitude	Longitude	Slot
0.0	0.0	1409643.71	3373857.23	40.450100	-104.156610	

Original Well Elev 13' WELL @ 4642.0ft (Original Well Elev 13')

Foundation Energy



State 36-3ST Pad Sec.36-T6N-R61W
State 36-3ST
Plan #2 (4-04-13)



Azimuths to True North
Magnetic North: 8.29°

Magnetic Field
Strength: 53032.9nT
Dip Angle: 67.13°
Date: 4/2/2013
Model: IGRF2010

WELLBORE TARGET DETAILS (LAT/LONG)

Name	TVD	+N/-S	+E/-W	Latitude	Longitude	Shape
TARGET BHL 690'FNL, 1943'FWL	5600.0	98.4	-553.8	40.450370	-104.158600	Point
LEGAL BOX 400' X 400' 657'FNL & 1981'FWL	5919.0	131.4	-515.8	40.450461	-104.158463	Rectangle (Sides: L400.0 W400.0)
TARGET CIRCLE 690'FNL & 1943'FWL	5919.0	98.4	-553.8	40.450370	-104.158600	Circle (Radius: 100.0)

SECTION DETAILS

Sec	MD	Inc	Azi	TVD	+N/-S	+E/-W	DLeg	TFace	VSec	Target
1	0.0	0.00	0.00	0.0	0.0	0.0	0.00	0.00	0.0	
2	2500.0	0.00	0.00	2500.0	0.0	0.0	0.00	0.00	0.0	
3	3146.3	12.93	280.07	3140.8	12.7	-71.5	2.00	280.07	72.6	
4	5011.9	12.93	280.07	4959.2	85.7	-482.4	0.00	0.00	489.9	
5	5658.2	0.00	0.00	5600.0	98.4	-553.8	2.00	180.00	562.5	TARGET BHL 690'FNL, 1943'FWL
6	6808.2	0.00	0.00	6750.0	98.4	-553.8	0.00	0.00	562.5	



Directional

Foundation Energy

SEC.36-T6N-R61W

State 36-3ST Pad Sec.36-T6N-R61W

State 36-3ST

Wellbore #1

Plan: Plan #2 (4-04-13)

Standard Planning Report

04 April, 2013

Database:	Landmark	Local Co-ordinate Reference:	Well State 36-3ST
Company:	Foundation Energy	TVD Reference:	WELL @ 4642.0ft (Original Well Elev 13')
Project:	SEC.36-T6N-R61W	MD Reference:	WELL @ 4642.0ft (Original Well Elev 13')
Site:	State 36-3ST Pad Sec.36-T6N-R61W	North Reference:	True
Well:	State 36-3ST	Survey Calculation Method:	Minimum Curvature
Wellbore:	Wellbore #1		
Design:	Plan #2 (4-04-13)		

Project	SEC.36-T6N-R61W, Weld County, Colorado		
Map System:	US State Plane 1983	System Datum:	Mean Sea Level
Geo Datum:	North American Datum 1983		Using Well Reference Point
Map Zone:	Colorado Northern Zone		Using geodetic scale factor

Site	State 36-3ST Pad Sec.36-T6N-R61W				
Site Position:		Northing:	1,409,643.72 ft	Latitude:	40.450100
From:	Lat/Long	Easting:	3,373,857.23 ft	Longitude:	-104.156610
Position Uncertainty:	0.0 ft	Slot Radius:	"	Grid Convergence:	0.87 °

Well	State 36-3ST					
Well Position	+N-S	0.0 ft	Northing:	1,409,643.71 ft	Latitude:	40.450100
	+E-W	0.0 ft	Easting:	3,373,857.23 ft	Longitude:	-104.156610
Position Uncertainty		0.0 ft	Wellhead Elevation:	ft	Ground Level:	4,629.0 ft

Wellbore	Wellbore #1				
Magnetics	Model Name	Sample Date	Declination (°)	Dip Angle (°)	Field Strength (nT)
	IGRF2010	4/2/2013	8.29	67.13	53,033

Design	Plan #2 (4-04-13)			
Audit Notes:				
Version:	Phase:	PROTOTYPE	Tie On Depth:	0.0
Vertical Section:	Depth From (TVD) (ft)	+N/-S (ft)	+E/-W (ft)	Direction (°)
	0.0	0.0	0.0	280.07

Plan Sections										
Measured Depth (ft)	Inclination (°)	Azimuth (°)	Vertical Depth (ft)	+N/-S (ft)	+E/-W (ft)	Dogleg Rate (°/100ft)	Build Rate (°/100ft)	Turn Rate (°/100ft)	TFO (°)	Target
0.0	0.00	0.00	0.0	0.0	0.0	0.00	0.00	0.00	0.00	
2,500.0	0.00	0.00	2,500.0	0.0	0.0	0.00	0.00	0.00	0.00	
3,146.3	12.93	280.07	3,140.8	12.7	-71.5	2.00	2.00	0.00	280.07	
5,011.9	12.93	280.07	4,959.2	85.7	-482.4	0.00	0.00	0.00	0.00	
5,658.2	0.00	0.00	5,600.0	98.4	-553.8	2.00	-2.00	0.00	180.00	TARGET BHL 690'I
6,808.2	0.00	0.00	6,750.0	98.4	-553.8	0.00	0.00	0.00	0.00	

Database:	Landmark	Local Co-ordinate Reference:	Well State 36-3ST
Company:	Foundation Energy	TVD Reference:	WELL @ 4642.0ft (Original Well Elev 13')
Project:	SEC.36-T6N-R61W	MD Reference:	WELL @ 4642.0ft (Original Well Elev 13')
Site:	State 36-3ST Pad Sec.36-T6N-R61W	North Reference:	True
Well:	State 36-3ST	Survey Calculation Method:	Minimum Curvature
Wellbore:	Wellbore #1		
Design:	Plan #2 (4-04-13)		

Planned Survey									
Measured Depth (ft)	Inclination (°)	Azimuth (°)	Vertical Depth (ft)	+N/-S (ft)	+E/-W (ft)	Vertical Section (ft)	Dogleg Rate (°/100ft)	Build Rate (°/100ft)	Turn Rate (°/100ft)
0.0	0.00	0.00	0.0	0.0	0.0	0.0	0.00	0.00	0.00
40.0	0.00	0.00	40.0	0.0	0.0	0.0	0.00	0.00	0.00
80.0	0.00	0.00	80.0	0.0	0.0	0.0	0.00	0.00	0.00
120.0	0.00	0.00	120.0	0.0	0.0	0.0	0.00	0.00	0.00
160.0	0.00	0.00	160.0	0.0	0.0	0.0	0.00	0.00	0.00
200.0	0.00	0.00	200.0	0.0	0.0	0.0	0.00	0.00	0.00
240.0	0.00	0.00	240.0	0.0	0.0	0.0	0.00	0.00	0.00
280.0	0.00	0.00	280.0	0.0	0.0	0.0	0.00	0.00	0.00
320.0	0.00	0.00	320.0	0.0	0.0	0.0	0.00	0.00	0.00
360.0	0.00	0.00	360.0	0.0	0.0	0.0	0.00	0.00	0.00
400.0	0.00	0.00	400.0	0.0	0.0	0.0	0.00	0.00	0.00
440.0	0.00	0.00	440.0	0.0	0.0	0.0	0.00	0.00	0.00
480.0	0.00	0.00	480.0	0.0	0.0	0.0	0.00	0.00	0.00
520.0	0.00	0.00	520.0	0.0	0.0	0.0	0.00	0.00	0.00
560.0	0.00	0.00	560.0	0.0	0.0	0.0	0.00	0.00	0.00
600.0	0.00	0.00	600.0	0.0	0.0	0.0	0.00	0.00	0.00
640.0	0.00	0.00	640.0	0.0	0.0	0.0	0.00	0.00	0.00
680.0	0.00	0.00	680.0	0.0	0.0	0.0	0.00	0.00	0.00
720.0	0.00	0.00	720.0	0.0	0.0	0.0	0.00	0.00	0.00
760.0	0.00	0.00	760.0	0.0	0.0	0.0	0.00	0.00	0.00
800.0	0.00	0.00	800.0	0.0	0.0	0.0	0.00	0.00	0.00
840.0	0.00	0.00	840.0	0.0	0.0	0.0	0.00	0.00	0.00
880.0	0.00	0.00	880.0	0.0	0.0	0.0	0.00	0.00	0.00
920.0	0.00	0.00	920.0	0.0	0.0	0.0	0.00	0.00	0.00
960.0	0.00	0.00	960.0	0.0	0.0	0.0	0.00	0.00	0.00
1,000.0	0.00	0.00	1,000.0	0.0	0.0	0.0	0.00	0.00	0.00
1,040.0	0.00	0.00	1,040.0	0.0	0.0	0.0	0.00	0.00	0.00
1,080.0	0.00	0.00	1,080.0	0.0	0.0	0.0	0.00	0.00	0.00
1,120.0	0.00	0.00	1,120.0	0.0	0.0	0.0	0.00	0.00	0.00
1,160.0	0.00	0.00	1,160.0	0.0	0.0	0.0	0.00	0.00	0.00
1,200.0	0.00	0.00	1,200.0	0.0	0.0	0.0	0.00	0.00	0.00
1,240.0	0.00	0.00	1,240.0	0.0	0.0	0.0	0.00	0.00	0.00
1,280.0	0.00	0.00	1,280.0	0.0	0.0	0.0	0.00	0.00	0.00
1,320.0	0.00	0.00	1,320.0	0.0	0.0	0.0	0.00	0.00	0.00
1,360.0	0.00	0.00	1,360.0	0.0	0.0	0.0	0.00	0.00	0.00
1,400.0	0.00	0.00	1,400.0	0.0	0.0	0.0	0.00	0.00	0.00
1,440.0	0.00	0.00	1,440.0	0.0	0.0	0.0	0.00	0.00	0.00
1,480.0	0.00	0.00	1,480.0	0.0	0.0	0.0	0.00	0.00	0.00
1,520.0	0.00	0.00	1,520.0	0.0	0.0	0.0	0.00	0.00	0.00
1,560.0	0.00	0.00	1,560.0	0.0	0.0	0.0	0.00	0.00	0.00
1,600.0	0.00	0.00	1,600.0	0.0	0.0	0.0	0.00	0.00	0.00
1,640.0	0.00	0.00	1,640.0	0.0	0.0	0.0	0.00	0.00	0.00
1,680.0	0.00	0.00	1,680.0	0.0	0.0	0.0	0.00	0.00	0.00
1,720.0	0.00	0.00	1,720.0	0.0	0.0	0.0	0.00	0.00	0.00
1,760.0	0.00	0.00	1,760.0	0.0	0.0	0.0	0.00	0.00	0.00
1,800.0	0.00	0.00	1,800.0	0.0	0.0	0.0	0.00	0.00	0.00
1,840.0	0.00	0.00	1,840.0	0.0	0.0	0.0	0.00	0.00	0.00
1,880.0	0.00	0.00	1,880.0	0.0	0.0	0.0	0.00	0.00	0.00
1,920.0	0.00	0.00	1,920.0	0.0	0.0	0.0	0.00	0.00	0.00
1,960.0	0.00	0.00	1,960.0	0.0	0.0	0.0	0.00	0.00	0.00
2,000.0	0.00	0.00	2,000.0	0.0	0.0	0.0	0.00	0.00	0.00
Top of Cement									
2,040.0	0.00	0.00	2,040.0	0.0	0.0	0.0	0.00	0.00	0.00
2,080.0	0.00	0.00	2,080.0	0.0	0.0	0.0	0.00	0.00	0.00

Database:	Landmark	Local Co-ordinate Reference:	Well State 36-3ST
Company:	Foundation Energy	TVD Reference:	WELL @ 4642.0ft (Original Well Elev 13')
Project:	SEC.36-T6N-R61W	MD Reference:	WELL @ 4642.0ft (Original Well Elev 13')
Site:	State 36-3ST Pad Sec.36-T6N-R61W	North Reference:	True
Well:	State 36-3ST	Survey Calculation Method:	Minimum Curvature
Wellbore:	Wellbore #1		
Design:	Plan #2 (4-04-13)		

Planned Survey									
Measured Depth (ft)	Inclination (°)	Azimuth (°)	Vertical Depth (ft)	+N/-S (ft)	+E/-W (ft)	Vertical Section (ft)	Dogleg Rate (°/100ft)	Build Rate (°/100ft)	Turn Rate (°/100ft)
2,120.0	0.00	0.00	2,120.0	0.0	0.0	0.0	0.00	0.00	0.00
2,160.0	0.00	0.00	2,160.0	0.0	0.0	0.0	0.00	0.00	0.00
2,200.0	0.00	0.00	2,200.0	0.0	0.0	0.0	0.00	0.00	0.00
2,240.0	0.00	0.00	2,240.0	0.0	0.0	0.0	0.00	0.00	0.00
2,280.0	0.00	0.00	2,280.0	0.0	0.0	0.0	0.00	0.00	0.00
2,320.0	0.00	0.00	2,320.0	0.0	0.0	0.0	0.00	0.00	0.00
2,360.0	0.00	0.00	2,360.0	0.0	0.0	0.0	0.00	0.00	0.00
2,400.0	0.00	0.00	2,400.0	0.0	0.0	0.0	0.00	0.00	0.00
2,440.0	0.00	0.00	2,440.0	0.0	0.0	0.0	0.00	0.00	0.00
2,480.0	0.00	0.00	2,480.0	0.0	0.0	0.0	0.00	0.00	0.00
2,500.0	0.00	0.00	2,500.0	0.0	0.0	0.0	0.00	0.00	0.00
Kickoff Point									
2,520.0	0.40	280.07	2,520.0	0.0	-0.1	0.1	2.00	2.00	0.00
2,560.0	1.20	280.07	2,560.0	0.1	-0.6	0.6	2.00	2.00	0.00
2,600.0	2.00	280.07	2,600.0	0.3	-1.7	1.7	2.00	2.00	0.00
2,640.0	2.80	280.07	2,639.9	0.6	-3.4	3.4	2.00	2.00	0.00
2,680.0	3.60	280.07	2,679.9	1.0	-5.6	5.7	2.00	2.00	0.00
2,720.0	4.40	280.07	2,719.8	1.5	-8.3	8.4	2.00	2.00	0.00
2,760.0	5.20	280.07	2,759.6	2.1	-11.6	11.8	2.00	2.00	0.00
2,800.0	6.00	280.07	2,799.5	2.7	-15.5	15.7	2.00	2.00	0.00
2,840.0	6.80	280.07	2,839.2	3.5	-19.8	20.2	2.00	2.00	0.00
2,880.0	7.60	280.07	2,878.9	4.4	-24.8	25.2	2.00	2.00	0.00
2,920.0	8.40	280.07	2,918.5	5.4	-30.3	30.7	2.00	2.00	0.00
2,960.0	9.20	280.07	2,958.0	6.4	-36.3	36.9	2.00	2.00	0.00
3,000.0	10.00	280.07	2,997.5	7.6	-42.9	43.5	2.00	2.00	0.00
3,002.6	10.05	280.07	3,000.0	7.7	-43.3	44.0	2.00	2.00	0.00
8 5/8"									
3,040.0	10.80	280.07	3,036.8	8.9	-50.0	50.7	2.00	2.00	0.00
3,080.0	11.60	280.07	3,076.0	10.2	-57.6	58.5	2.00	2.00	0.00
3,120.0	12.40	280.07	3,115.2	11.7	-65.8	66.8	2.00	2.00	0.00
3,146.3	12.93	280.07	3,140.8	12.7	-71.5	72.6	2.00	2.00	0.00
3,160.0	12.93	280.07	3,154.2	13.2	-74.5	75.7	0.00	0.00	0.00
3,200.0	12.93	280.07	3,193.2	14.8	-83.3	84.6	0.00	0.00	0.00
3,240.0	12.93	280.07	3,232.2	16.4	-92.1	93.6	0.00	0.00	0.00
3,280.0	12.93	280.07	3,271.1	17.9	-100.9	102.5	0.00	0.00	0.00
3,320.0	12.93	280.07	3,310.1	19.5	-109.7	111.4	0.00	0.00	0.00
3,360.0	12.93	280.07	3,349.1	21.1	-118.5	120.4	0.00	0.00	0.00
3,400.0	12.93	280.07	3,388.1	22.6	-127.4	129.3	0.00	0.00	0.00
3,440.0	12.93	280.07	3,427.1	24.2	-136.2	138.3	0.00	0.00	0.00
3,480.0	12.93	280.07	3,466.1	25.8	-145.0	147.2	0.00	0.00	0.00
3,520.0	12.93	280.07	3,505.1	27.3	-153.8	156.2	0.00	0.00	0.00
3,560.0	12.93	280.07	3,544.0	28.9	-162.6	165.1	0.00	0.00	0.00
3,600.0	12.93	280.07	3,583.0	30.4	-171.4	174.1	0.00	0.00	0.00
3,640.0	12.93	280.07	3,622.0	32.0	-180.2	183.0	0.00	0.00	0.00
3,680.0	12.93	280.07	3,661.0	33.6	-189.0	192.0	0.00	0.00	0.00
3,720.0	12.93	280.07	3,700.0	35.1	-197.8	200.9	0.00	0.00	0.00
3,760.0	12.93	280.07	3,739.0	36.7	-206.6	209.9	0.00	0.00	0.00
3,800.0	12.93	280.07	3,778.0	38.3	-215.5	218.8	0.00	0.00	0.00
3,840.0	12.93	280.07	3,817.0	39.8	-224.3	227.8	0.00	0.00	0.00
3,880.0	12.93	280.07	3,855.9	41.4	-233.1	236.7	0.00	0.00	0.00
3,920.0	12.93	280.07	3,894.9	43.0	-241.9	245.7	0.00	0.00	0.00
3,960.0	12.93	280.07	3,933.9	44.5	-250.7	254.6	0.00	0.00	0.00
4,000.0	12.93	280.07	3,972.9	46.1	-259.5	263.6	0.00	0.00	0.00
4,040.0	12.93	280.07	4,011.9	47.7	-268.3	272.5	0.00	0.00	0.00

Database:	Landmark	Local Co-ordinate Reference:	Well State 36-3ST
Company:	Foundation Energy	TVD Reference:	WELL @ 4642.0ft (Original Well Elev 13')
Project:	SEC.36-T6N-R61W	MD Reference:	WELL @ 4642.0ft (Original Well Elev 13')
Site:	State 36-3ST Pad Sec.36-T6N-R61W	North Reference:	True
Well:	State 36-3ST	Survey Calculation Method:	Minimum Curvature
Wellbore:	Wellbore #1		
Design:	Plan #2 (4-04-13)		

Planned Survey									
Measured Depth (ft)	Inclination (°)	Azimuth (°)	Vertical Depth (ft)	+N/-S (ft)	+E/-W (ft)	Vertical Section (ft)	Dogleg Rate (°/100ft)	Build Rate (°/100ft)	Turn Rate (°/100ft)
4,080.0	12.93	280.07	4,050.9	49.2	-277.1	281.5	0.00	0.00	0.00
4,120.0	12.93	280.07	4,089.9	50.8	-285.9	290.4	0.00	0.00	0.00
4,160.0	12.93	280.07	4,128.8	52.4	-294.7	299.4	0.00	0.00	0.00
4,200.0	12.93	280.07	4,167.8	53.9	-303.5	308.3	0.00	0.00	0.00
4,240.0	12.93	280.07	4,206.8	55.5	-312.4	317.2	0.00	0.00	0.00
4,280.0	12.93	280.07	4,245.8	57.0	-321.2	326.2	0.00	0.00	0.00
4,320.0	12.93	280.07	4,284.8	58.6	-330.0	335.1	0.00	0.00	0.00
4,360.0	12.93	280.07	4,323.8	60.2	-338.8	344.1	0.00	0.00	0.00
4,400.0	12.93	280.07	4,362.8	61.7	-347.6	353.0	0.00	0.00	0.00
4,440.0	12.93	280.07	4,401.7	63.3	-356.4	362.0	0.00	0.00	0.00
4,480.0	12.93	280.07	4,440.7	64.9	-365.2	370.9	0.00	0.00	0.00
4,520.0	12.93	280.07	4,479.7	66.4	-374.0	379.9	0.00	0.00	0.00
4,560.0	12.93	280.07	4,518.7	68.0	-382.8	388.8	0.00	0.00	0.00
4,600.0	12.93	280.07	4,557.7	69.6	-391.6	397.8	0.00	0.00	0.00
4,640.0	12.93	280.07	4,596.7	71.1	-400.5	406.7	0.00	0.00	0.00
4,680.0	12.93	280.07	4,635.7	72.7	-409.3	415.7	0.00	0.00	0.00
4,720.0	12.93	280.07	4,674.7	74.3	-418.1	424.6	0.00	0.00	0.00
4,760.0	12.93	280.07	4,713.6	75.8	-426.9	433.6	0.00	0.00	0.00
4,800.0	12.93	280.07	4,752.6	77.4	-435.7	442.5	0.00	0.00	0.00
4,840.0	12.93	280.07	4,791.6	79.0	-444.5	451.5	0.00	0.00	0.00
4,880.0	12.93	280.07	4,830.6	80.5	-453.3	460.4	0.00	0.00	0.00
4,920.0	12.93	280.07	4,869.6	82.1	-462.1	469.4	0.00	0.00	0.00
4,960.0	12.93	280.07	4,908.6	83.7	-470.9	478.3	0.00	0.00	0.00
5,000.0	12.93	280.07	4,947.6	85.2	-479.7	487.3	0.00	0.00	0.00
5,011.9	12.93	280.07	4,959.2	85.7	-482.4	489.9	0.00	0.00	0.00
5,040.0	12.36	280.07	4,986.6	86.8	-488.4	496.1	2.00	-2.00	0.00
5,080.0	11.56	280.07	5,025.7	88.2	-496.6	504.4	2.00	-2.00	0.00
5,120.0	10.76	280.07	5,064.9	89.6	-504.2	512.1	2.00	-2.00	0.00
5,160.0	9.96	280.07	5,104.3	90.8	-511.3	519.3	2.00	-2.00	0.00
5,200.0	9.16	280.07	5,143.7	92.0	-517.8	525.9	2.00	-2.00	0.00
5,240.0	8.36	280.07	5,183.3	93.1	-523.8	532.0	2.00	-2.00	0.00
5,280.0	7.56	280.07	5,222.9	94.0	-529.3	537.6	2.00	-2.00	0.00
5,320.0	6.76	280.07	5,262.6	94.9	-534.2	542.6	2.00	-2.00	0.00
5,360.0	5.96	280.07	5,302.3	95.7	-538.6	547.0	2.00	-2.00	0.00
5,400.0	5.16	280.07	5,342.1	96.3	-542.4	550.9	2.00	-2.00	0.00
5,440.0	4.36	280.07	5,382.0	96.9	-545.7	554.2	2.00	-2.00	0.00
5,480.0	3.56	280.07	5,421.9	97.4	-548.4	557.0	2.00	-2.00	0.00
5,520.0	2.76	280.07	5,461.8	97.8	-550.6	559.2	2.00	-2.00	0.00
5,560.0	1.96	280.07	5,501.8	98.1	-552.2	560.8	2.00	-2.00	0.00
5,600.0	1.16	280.07	5,541.8	98.3	-553.3	561.9	2.00	-2.00	0.00
5,640.0	0.36	280.07	5,581.8	98.4	-553.8	562.5	2.00	-2.00	0.00
5,658.2	0.00	0.00	5,600.0	98.4	-553.8	562.5	2.00	-2.00	0.00
5,680.0	0.00	0.00	5,621.8	98.4	-553.8	562.5	0.00	0.00	0.00
5,720.0	0.00	0.00	5,661.8	98.4	-553.8	562.5	0.00	0.00	0.00
5,760.0	0.00	0.00	5,701.8	98.4	-553.8	562.5	0.00	0.00	0.00
5,800.0	0.00	0.00	5,741.8	98.4	-553.8	562.5	0.00	0.00	0.00
5,840.0	0.00	0.00	5,781.8	98.4	-553.8	562.5	0.00	0.00	0.00
5,880.0	0.00	0.00	5,821.8	98.4	-553.8	562.5	0.00	0.00	0.00
5,920.0	0.00	0.00	5,861.8	98.4	-553.8	562.5	0.00	0.00	0.00
5,960.0	0.00	0.00	5,901.8	98.4	-553.8	562.5	0.00	0.00	0.00
5,977.2	0.00	0.00	5,919.0	98.4	-553.8	562.5	0.00	0.00	0.00
NIOBRARA									
6,000.0	0.00	0.00	5,941.8	98.4	-553.8	562.5	0.00	0.00	0.00

Formations						
	Measured Depth (ft)	Vertical Depth (ft)	Name	Lithology	Dip (°)	Dip Direction (°)
	5,977.2	5,919.0	NIOBRARA		0.00	
	6,231.2	6,173.0	FORT HAYES		0.00	
	6,568.2	6,510.0	X-BENTONITE		0.00	
	6,678.2	6,620.0	D-SAND		0.00	
	6,745.2	6,687.0	J-SAND		0.00	

Database:	Landmark	Local Co-ordinate Reference:	Well State 36-3ST
Company:	Foundation Energy	TVD Reference:	WELL @ 4642.0ft (Original Well Elev 13')
Project:	SEC.36-T6N-R61W	MD Reference:	WELL @ 4642.0ft (Original Well Elev 13')
Site:	State 36-3ST Pad Sec.36-T6N-R61W	North Reference:	True
Well:	State 36-3ST	Survey Calculation Method:	Minimum Curvature
Wellbore:	Wellbore #1		
Design:	Plan #2 (4-04-13)		

Plan Annotations					
Measured Depth (ft)	Vertical Depth (ft)	Local Coordinates			
		+N/-S (ft)	+E/-W (ft)	Comment	
2,000.0	2,000.0	0.0	0.0	Top of Cement	
2,500.0	2,500.0	0.0	0.0	Kickoff Point	