

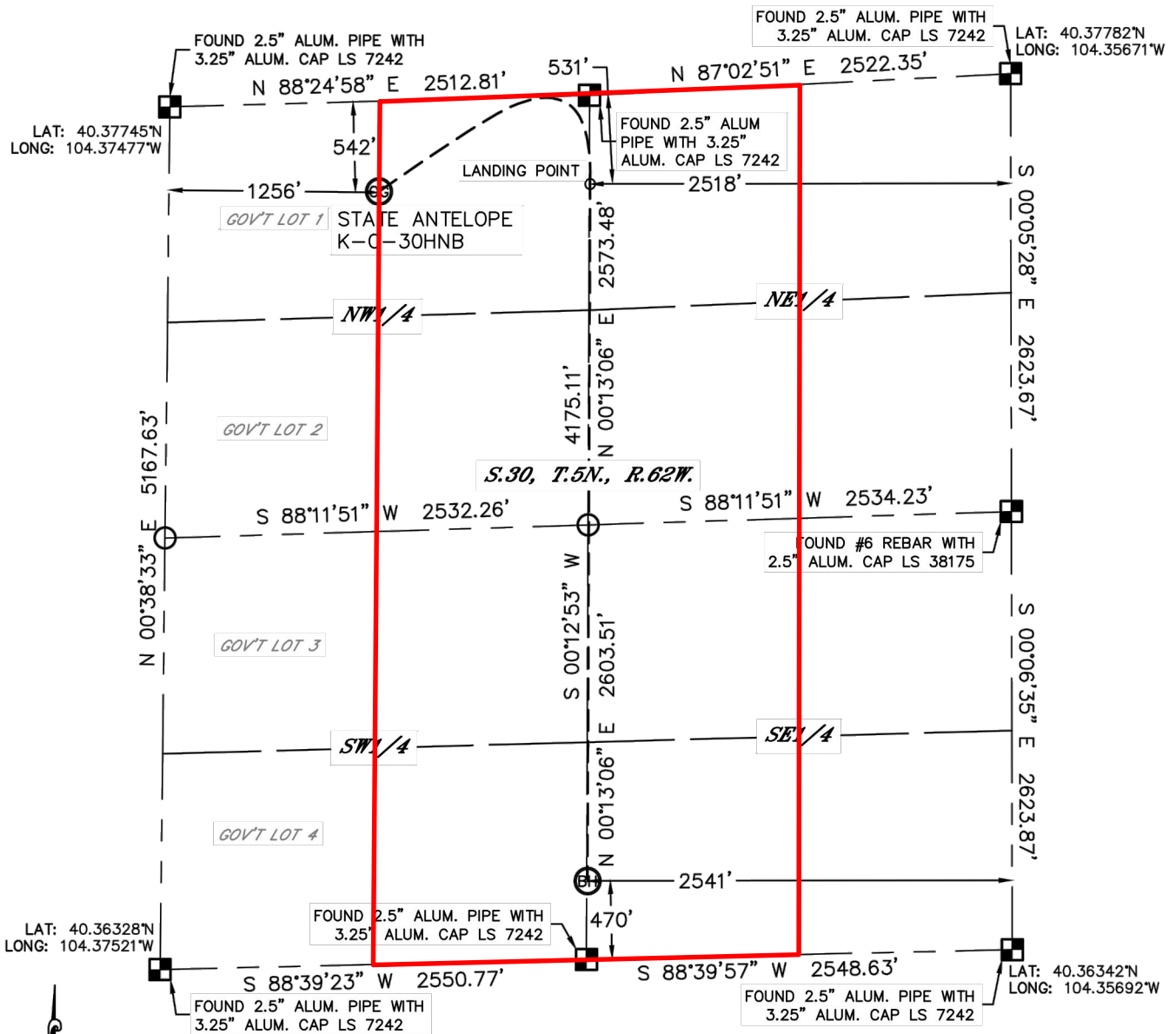


Lat40°, Inc. 1635 Foxtrail Drive, Suite 325 Loveland, CO 970-776-3321

WELL LOCATION CERTIFICATE

THIS MAP DOES NOT REPRESENT A BOUNDARY SURVEY

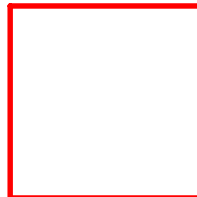
SECTION: 30
TOWNSHIP: 5N
RANGE: 62W



In accordance with a request from Michael Meagher with BONANZA CREEK ENERGY, INC., Lat40°, Inc. has determined the surface location of the STATE ANTELOPE K-O-30HNB to be 542' from the NORTH line and 1256' from the WEST line and the bottom hole to be 470' from the SOUTH line and 2541' from the EAST line as measured at right angles from the section lines of Section 30, Township 5 North.



**BONANZA
CREEK**



Wellbore Spacing Unit Outline



Wellbore Spacing Unit Map

09 April 2013 ksc

State Antelope K-O-30HNB
E/2W/2 & W/2E/2 Sec 30 T5N R62W 6th PM
Weld County, Colorado