

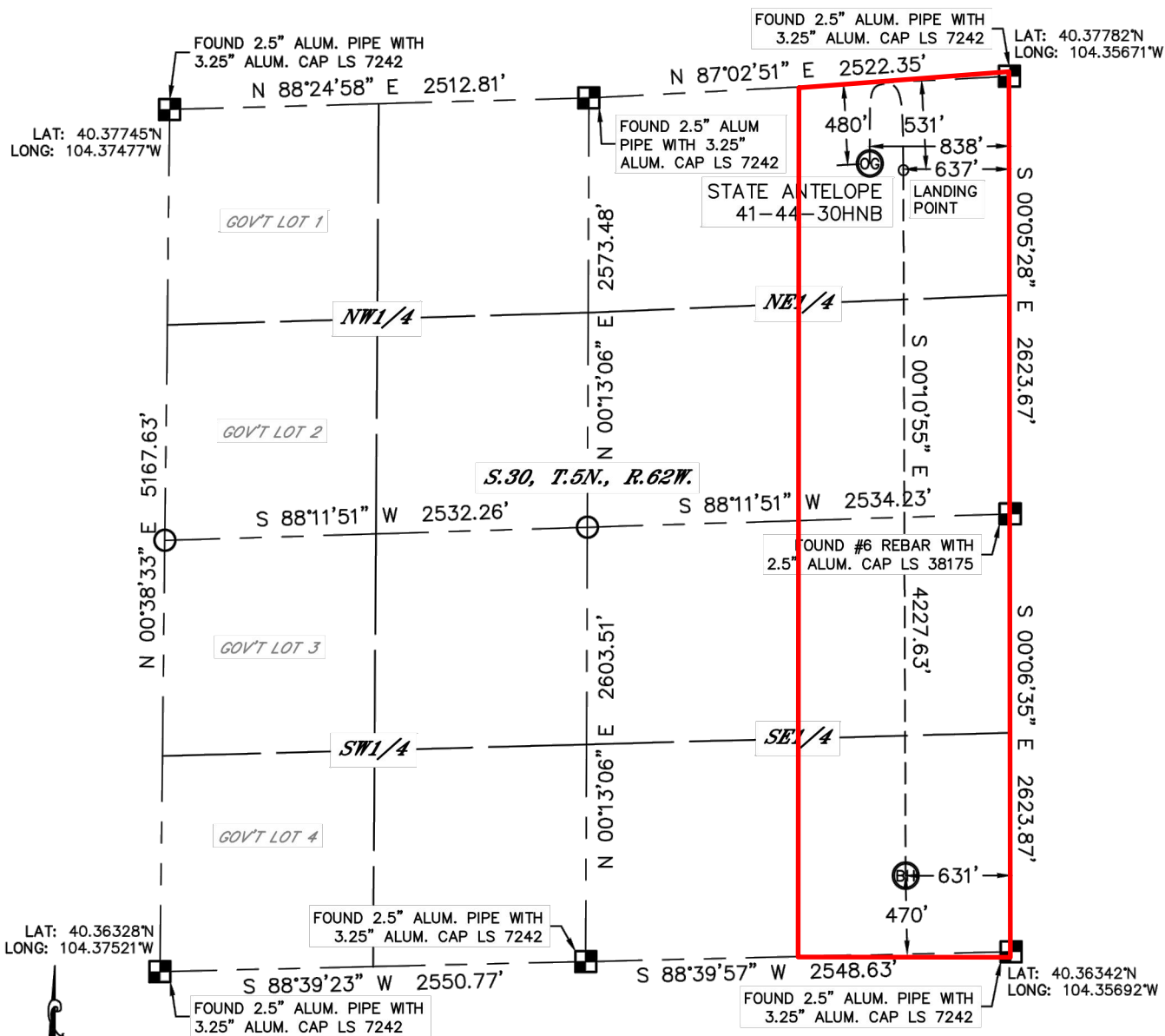


Lat40°, Inc. 1635 Foxtrail Drive, Suite 325 Loveland, CO 970-776-3321

## WELL LOCATION CERTIFICATE

THIS MAP DOES NOT REPRESENT A BOUNDARY SURVEY

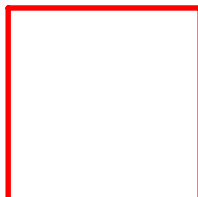
SECTION: 30  
TOWNSHIP: 5N  
RANGE: 62W



In accordance with a request from Michael Meggher with BONANZA CREEK ENERGY, INC. Lat40°, Inc. has determined the surface location of the STATE ANTELOPE 41-44-30HNB to be 480' from the NORTH line and 838' from the EAST line and the bottom hole to be 470' from the SOUTH line and



**BONANZA  
CREEK**



Wellbore Spacing Unit Outline



### Wellbore Spacing Unit Map

09 April 2013 ksc

State Antelope 41-44-30HNB  
E/2E/2 Sec 30 T5N R62W 6th PM  
Weld County, Colorado